

Data Path : Z:\VOASRV\HPCHEM1\MSVOA U\DATA\VU111920\  
 Data File : VU041331.D  
 Acq On : 18 Nov 2020 22:59  
 Operator : SY/MD  
 Sample : L4790-15  
 Misc : 25.0mL/MSVOA U/WATER  
 ALS Vial : 18 Sample Multiplier: 1

**Instrument :**  
 MSVOA\_U  
**Client Sampled :**  
 H4399

**Manual Integrations**  
**APPROVED**  
 MMDadoda  
 11/20/2020 2:21:07 PM

Quant Time: Nov 19 01:59:47 2020  
 Quant Method : Z:\VOASRV\HPCHEM1\MSVOA\_U\METHOD\SOMUTR111620WMA.M  
 Quant Title : TRACE VOA SOM01.0  
 QLast Update : Thu Nov 19 00:50:13 2020  
 Response via : Initial Calibration

Internal Standards	R.T.	QIon	Response	Conc	Units	Dev(Min)
1) 1,4-Difluorobenzene	6.26	114	65319	5.00	ug/L	0.00
28) Chlorobenzene-d5	9.42	117	64845	5.00	ug/L	0.00
60) 1,4-Dichlorobenzene-d4	11.81	152	26108	5.00	ug/L	0.00

System Monitoring Compounds

4) Vinyl Chloride-d3	1.60	65	21357	4.44	ug/L	0.00
Spiked Amount	5.000	Range	40 - 130	Recovery	=	88.80%
7) Chloroethane-d5	1.92	69	18423	4.48	ug/L	0.00
Spiked Amount	5.000	Range	65 - 130	Recovery	=	89.60%
11) 1,1-Dichloroethene-d2	2.58	63	33509	3.38	ug/L	0.00
Spiked Amount	5.000	Range	60 - 125	Recovery	=	67.60%
20) 2-Butanone-d5	4.66	46	88218	44.53	ug/L	0.00
Spiked Amount	50.000	Range	40 - 130	Recovery	=	89.06%
24) Chloroform-d	5.08	84	48915	4.70	ug/L	0.00
Spiked Amount	5.000	Range	70 - 125	Recovery	=	94.00%
26) 1,2-Dichloroethane-d4	5.72	65	31138	4.59	ug/L	0.00
Spiked Amount	5.000	Range	70 - 130	Recovery	=	91.80%
32) Benzene-d6	5.74	84	86344	4.94	ug/L	0.00
Spiked Amount	5.000	Range	70 - 125	Recovery	=	98.80%
36) 1,2-Dichloropropane-d6	6.70	67	29961	4.97	ug/L	0.00
Spiked Amount	5.000	Range	60 - 140	Recovery	=	99.40%
41) Toluene-d8	7.91	98	69075	4.19	ug/L	0.00
Spiked Amount	5.000	Range	70 - 130	Recovery	=	83.80%
43) trans-1,3-Dichloropropene-	8.19	79	11286	4.35	ug/L	0.00
Spiked Amount	5.000	Range	55 - 130	Recovery	=	87.00%
46) 2-Hexanone-d5	8.64	63	63146	45.60	ug/L	0.00
Spiked Amount	50.000	Range	45 - 130	Recovery	=	91.20%
57) 1,1,2,2-Tetrachloroethane-	10.75	84	26062	4.46	ug/L	0.00
Spiked Amount	5.000	Range	65 - 120	Recovery	=	89.20%
64) 1,2-Dichlorobenzene-d4	12.19	152	26956	5.29	ug/L	0.00
Spiked Amount	5.000	Range	80 - 120	Recovery	=	105.80%

Target Compounds

Target Compounds	R.T.	QIon	Response	Conc	Units	Ovalue
3) Chloromethane	1.53	50	646	0.111	ug/L	91
5) Vinyl chloride	1.61	62	132064	23.290	ug/L	99
12) 1,1-Dichloroethene	2.59	96	1289	0.303	ug/L #	1
13) Acetone	2.66	43	1721m	1.310	ug/L	
18) trans-1,2-Dichloroethene	3.37	96	8427	2.035	ug/L	94
19) 1,1-Dichloroethane	3.89	63	6413	0.693	ug/L	91
22) cis-1,2-Dichloroethene	4.69	96	43925	9.392	ug/L	99
33) Benzene	5.79	78	3344	0.190	ug/L	100
34) Trichloroethene	6.55	95	3318	0.699	ug/L	83

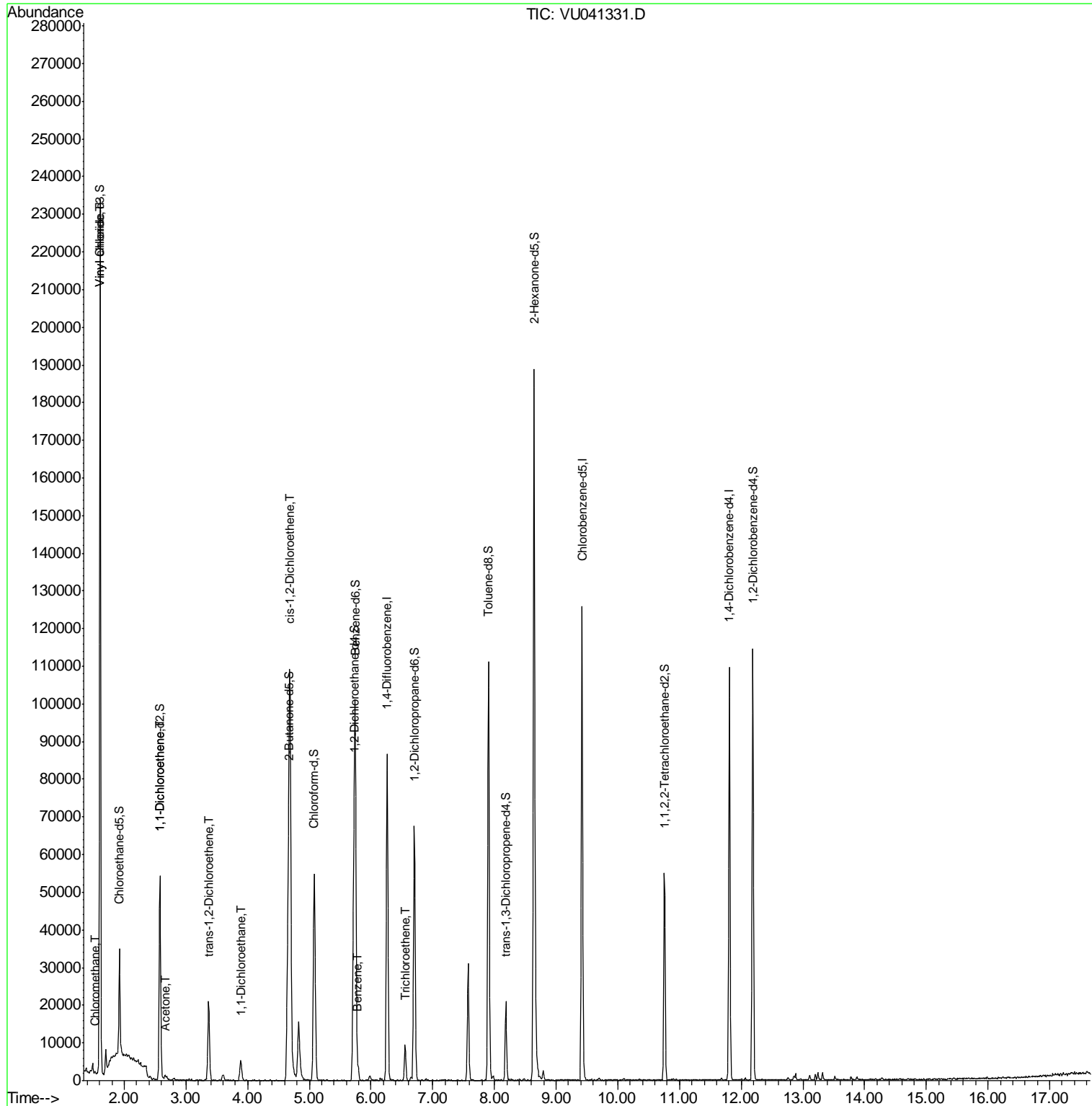
(#) = qualifier out of range (m) = manual integration (+) = signals summed

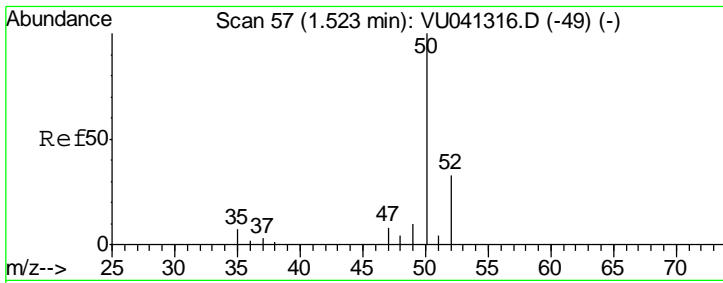
Data Path : Z:\VOASRV\HPCHEM1\MSVOA U\DATA\VU111920\  
 Data File : VU041331.D  
 Acq On : 18 Nov 2020 22:59  
 Operator : SY/MD  
 Sample : L4790-15  
 Misc : 25.0mL/MSVOA U/WATER  
 ALS Vial : 18 Sample Multiplier: 1

Instrument :  
 MSVOA\_U  
 Client Sampled :  
 H4399

Manual Integrations  
 APPROVED  
 MMDadoda  
 11/20/2020 2:21:07 PM

Quant Time: Nov 19 01:59:47 2020  
 Quant Method : Z:\VOASRV\HPCHEM1\MSVOA\_U\METHOD\SOMUTR111620WMA.M  
 Quant Title : TRACE VOA SOM01.0  
 QLast Update : Thu Nov 19 00:50:13 2020  
 Response via : Initial Calibration



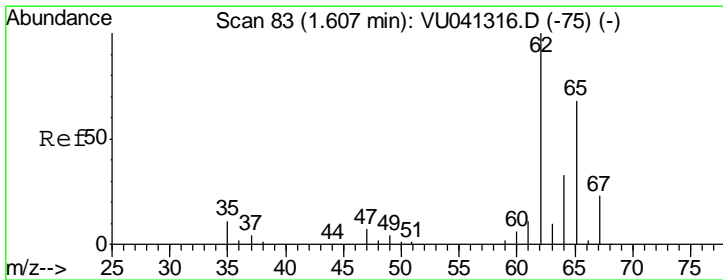
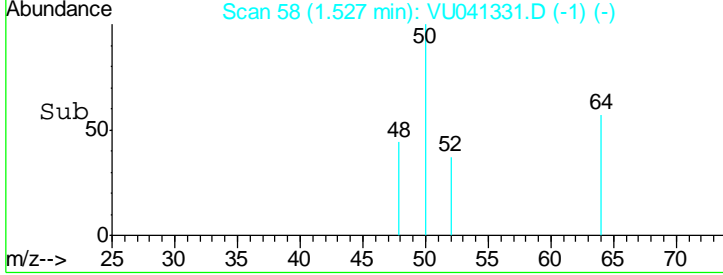
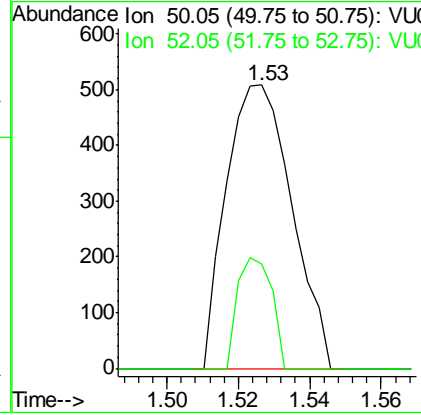
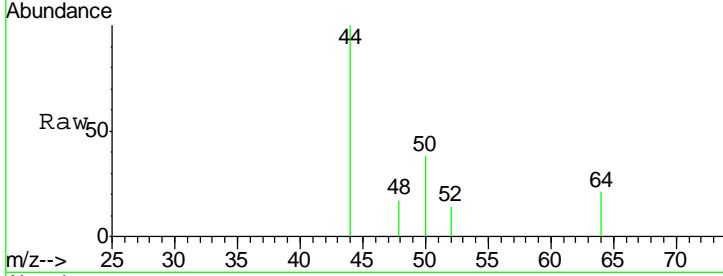


#3  
 Chloromethane  
 Concen: 0.111 ug/L  
 RT: 1.53 min Scan# 58  
 Delta R.T. 0.00 min  
 Lab File: VU041331.D  
 Acq: 18 Nov 2020 22:59

Tgt Ion	Resp	Lower	Upper
50	100		
52	37.0	22.4	41.6

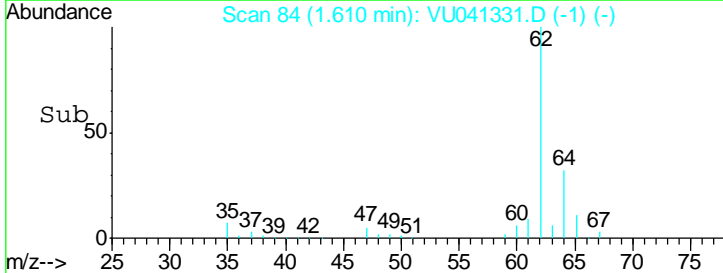
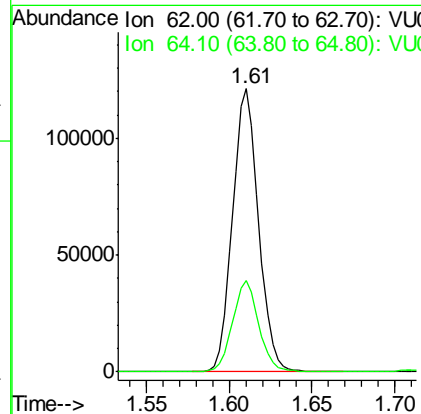
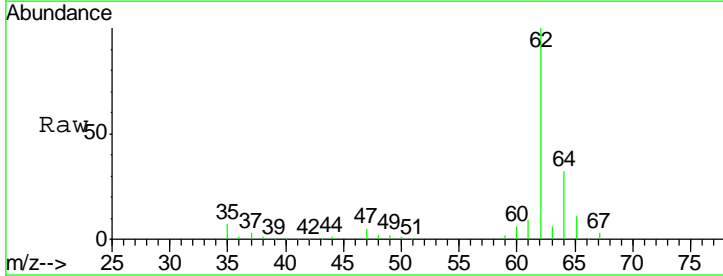
Instrument : MSVOA\_U  
 ClientSampled : H4399

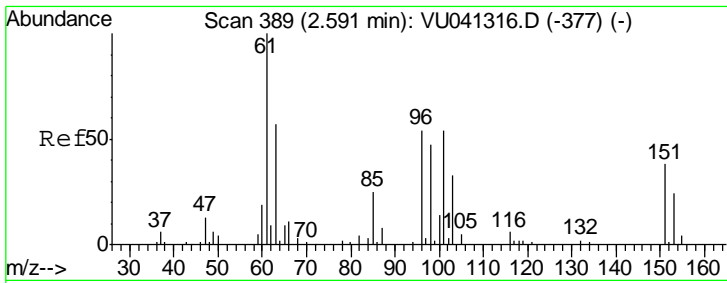
Manual Integrations  
**APPROVED**  
 MMDadoda  
 11/20/2020 2:21:07 PM



#5  
 Vinyl chloride  
 Concen: 23.290 ug/L  
 RT: 1.61 min Scan# 84  
 Delta R.T. 0.00 min  
 Lab File: VU041331.D  
 Acq: 18 Nov 2020 22:59

Tgt Ion	Resp	Lower	Upper
62	100		
64	32.1	22.7	42.3





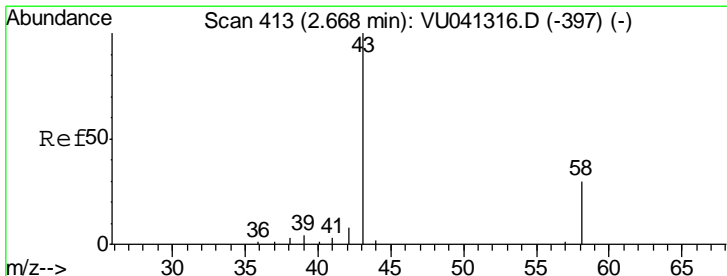
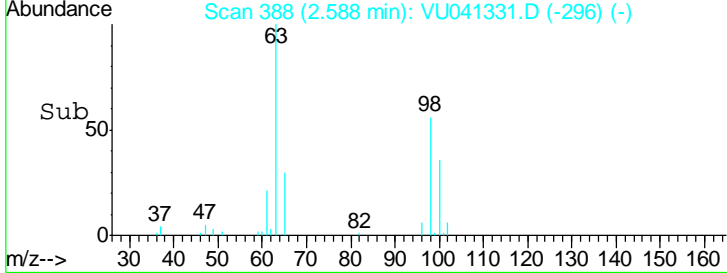
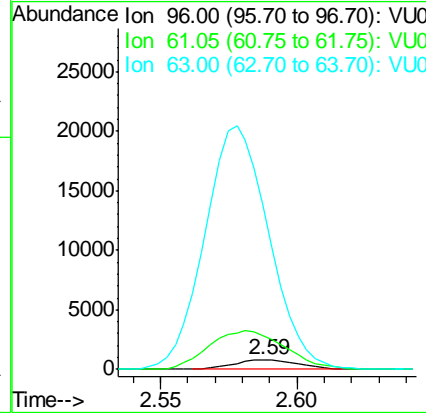
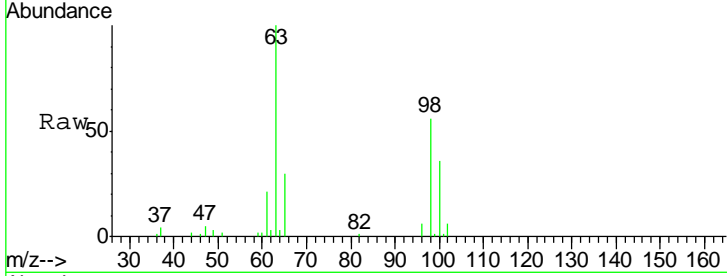
#12  
 1,1-Dichloroethene  
 Concen: 0.303 ug/L  
 RT: 2.59 min Scan# 388  
 Delta R.T. -0.00 min  
 Lab File: VU041331.D  
 Acq: 18 Nov 2020 22:59

Instrument : MSVOA\_U  
 ClientSampled : H4399

Tgt Ion	Resp	Lower	Upper
96	100		
61	364.0	134.3	249.5#
63	1745.6	95.0	176.4

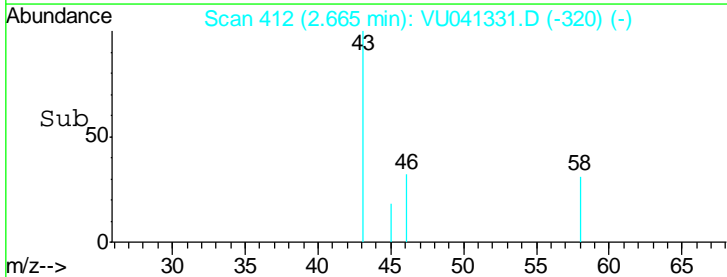
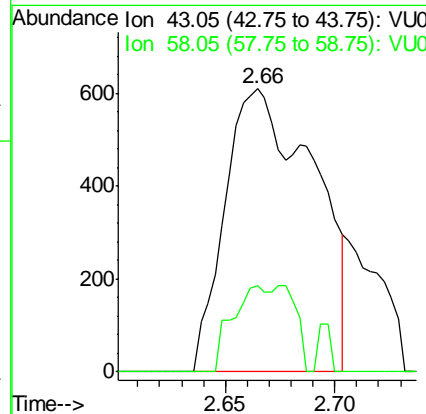
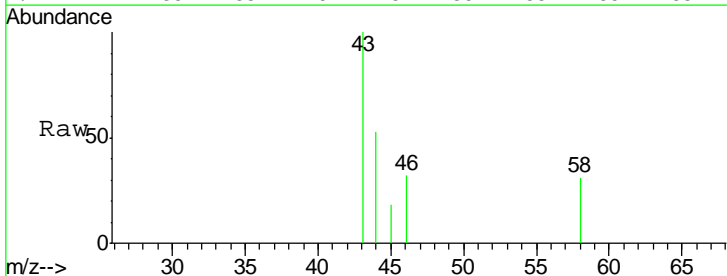
Manual Integrations  
 APPROVED

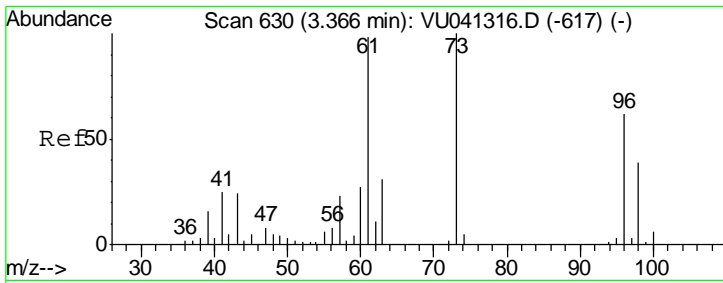
MMDadoda  
 11/20/2020 2:21:07 PM



#13  
 Acetone  
 Concen: 1.310 ug/L m  
 RT: 2.66 min Scan# 412  
 Delta R.T. -0.00 min  
 Lab File: VU041331.D  
 Acq: 18 Nov 2020 22:59

Tgt Ion	Resp	Lower	Upper
43	100		
58	13.5	0.0	25.4





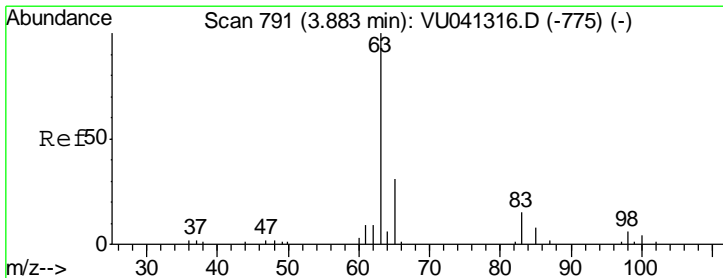
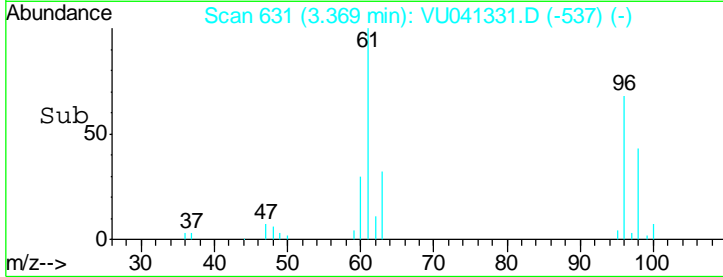
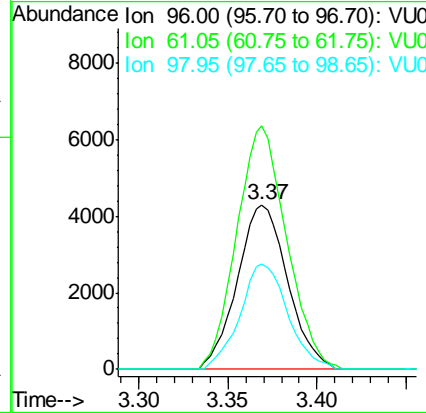
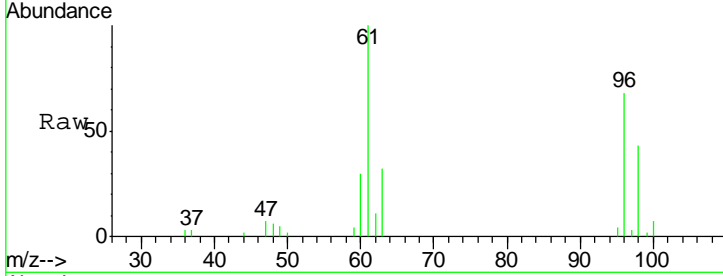
#18  
 trans-1,2-Dichloroethene  
 Concen: 2.035 ug/L  
 RT: 3.37 min Scan# 631  
 Delta R.T. 0.00 min  
 Lab File: VU041331.D  
 Acq: 18 Nov 2020 22:59

Instrument : MSVOA\_U  
 ClientSampled : H4399

Tgt Ion	Resp	Lower	Upper
96	8427		
61	147.8	110.9	205.9
98	64.0	45.4	84.2

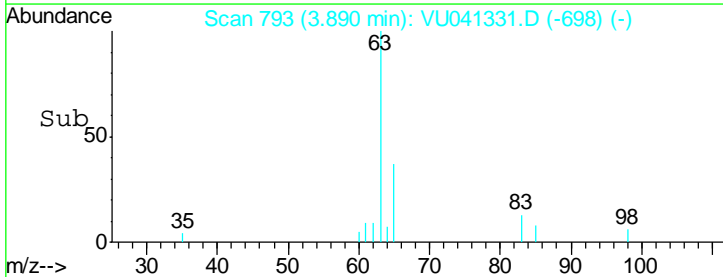
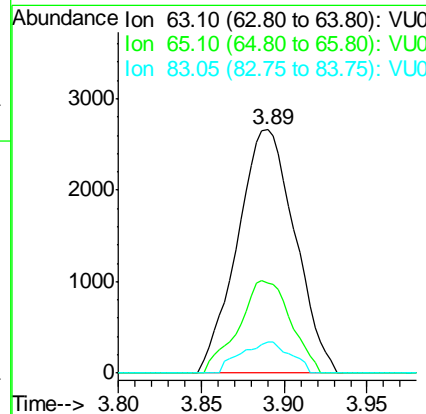
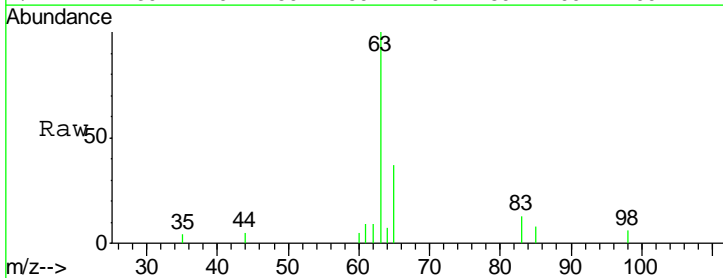
Manual Integrations  
 APPROVED

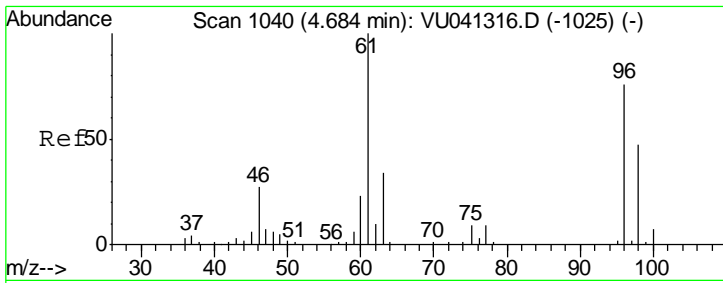
MMDadoda  
 11/20/2020 2:21:07 PM



#19  
 1,1-Dichloroethane  
 Concen: 0.693 ug/L  
 RT: 3.89 min Scan# 793  
 Delta R.T. 0.01 min  
 Lab File: VU041331.D  
 Acq: 18 Nov 2020 22:59

Tgt Ion	Resp	Lower	Upper
63	6413		
65	37.2	21.3	39.6
83	12.7	8.8	16.3





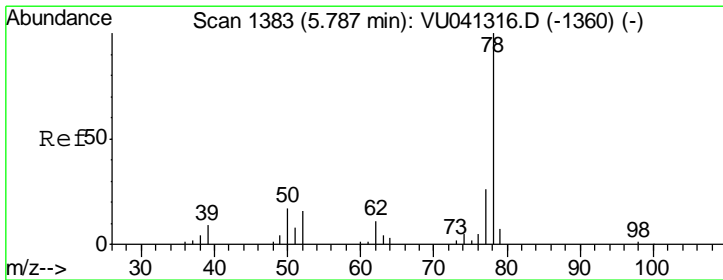
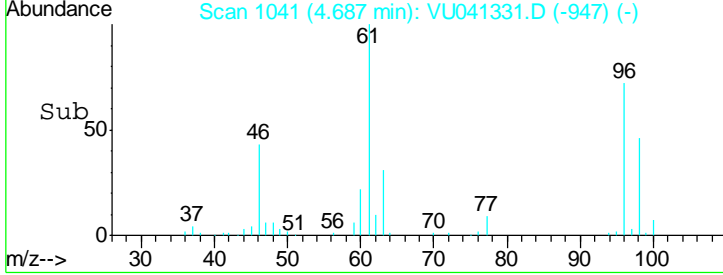
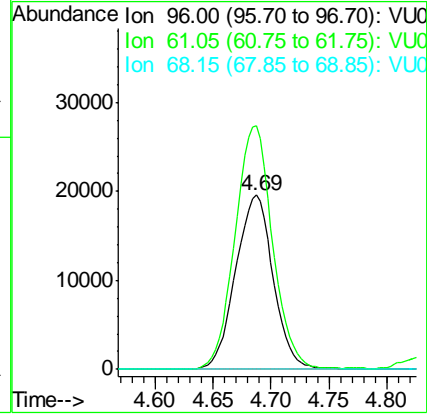
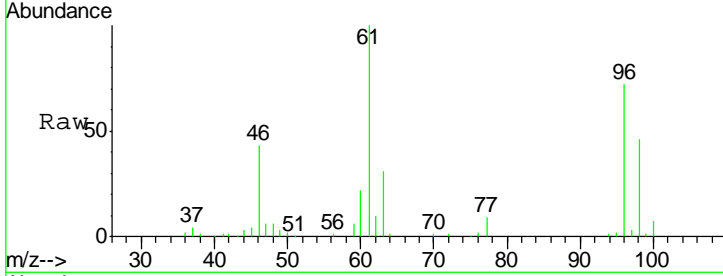
#22  
 cis-1,2-Dichloroethene  
 Concen: 9.392 ug/L  
 RT: 4.69 min Scan# 1041  
 Delta R.T. 0.00 min  
 Lab File: VU041331.D  
 Acq: 18 Nov 2020 22:59

**Instrument :**  
 MSVOA\_U  
**ClientSampled :**  
 H4399

Tgt Ion	Resp	Lower	Upper
96	43925		
61	139.7	97.2	180.4
68	0.0	0.0	0.0

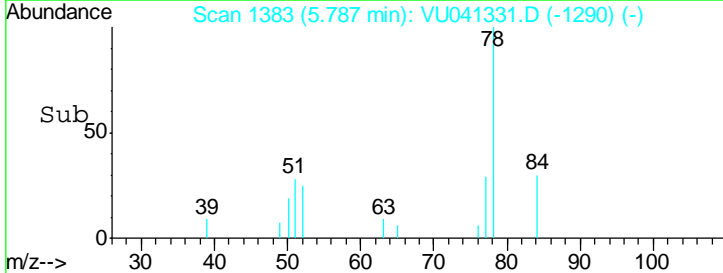
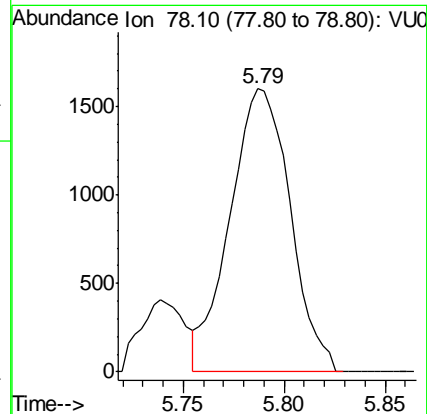
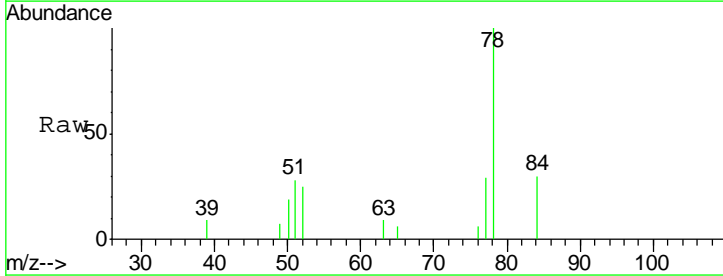
**Manual Integrations**  
**APPROVED**

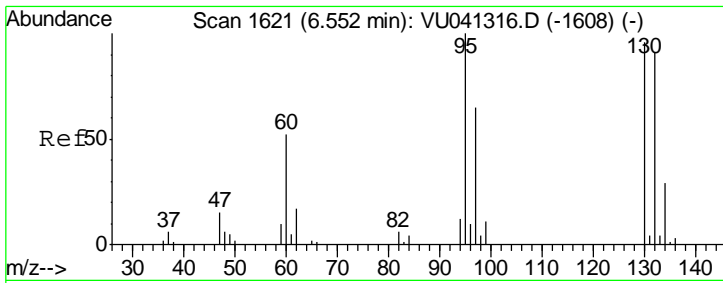
MMDadoda  
 11/20/2020 2:21:07 PM



#33  
 Benzene  
 Concen: 0.190 ug/L  
 RT: 5.79 min Scan# 1383  
 Delta R.T. -0.00 min  
 Lab File: VU041331.D  
 Acq: 18 Nov 2020 22:59

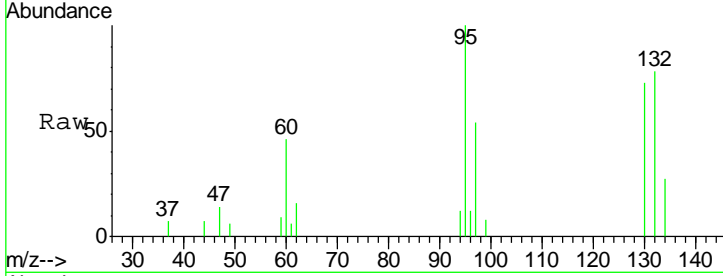
Tgt Ion: 78 Resp: 3344





#34  
 Trichloroethene  
 Concen: 0.699 ug/L  
 RT: 6.55 min Scan# 1621  
 Delta R.T. -0.00 min  
 Lab File: VU041331.D  
 Acq: 18 Nov 2020 22:59

**Instrument :**  
 MSVOA\_U  
**ClientSampled :**  
 H4399



Tot Ion: 95 Resp: 3318

Ion	Ratio	Lower	Upper
95	100		
97	53.9	45.6	84.6
132	78.0	64.8	120.4
130	73.1	64.8	120.4

**Manual Integrations**  
**APPROVED**  
 MMDadoda  
 11/20/2020 2:21:07 PM

