

Data Path : Z:\voasrv\HPCHEM1\MSVOA_U\Data\VU111922\
 Data File : VU051923.D
 Acq On : 19 Nov 2022 00:23
 Operator : JC/MD
 Sample : N5684-12
 Misc : 25.0mL/MSVOA_U/WATER
 ALS Vial : 24 Sample Multiplier: 1

Instrument :
 MSVOA_U
 ClientSampleId :
 BH1J2

Integration Parameters: rteint.p

Integrator: RTE
 Smoothing : ON
 Sampling : 1
 Start Thrs : 0.1
 Stop Thrs : 0

Filtering: 5
 Min Area: 3 % of largest Peak
 Max Peaks: 100
 Peak Location: TOP

If leading or trailing edge < 100 prefer < Baseline drop else tangent >
 Peak separation: 5

Method : Z:\voasrv\HPCHEM1\MSVOA_U\Method\SFAMUTR111822WMA.M
 Title : TRACE VOA SFAM1.0

Signal : TIC: VU051923.D\data.ms

peak #	R.T. min	first scan	max scan	last scan	PK TY	peak height	corr. area	corr. % max.	% of total
1	1.600	73	81	96	rBV	147990	175300	11.53%	1.884%
2	1.771	127	134	142	rVB4	11708	16747	1.10%	0.180%
3	1.912	170	178	200	rVB	105387	150296	9.88%	1.616%
4	2.568	368	382	394	rBV	208472	344056	22.63%	3.698%
5	3.189	557	575	588	rVB2	8408	19471	1.28%	0.209%
6	3.883	770	791	793	rBV	10461	24454	1.61%	0.263%
7	4.616	1007	1019	1053	rBV	143884	419244	27.57%	4.507%
8	5.063	1142	1158	1193	rBV	173738	416998	27.42%	4.482%
9	5.726	1343	1364	1395	rBV2	347679	918533	60.40%	9.874%
10	6.247	1512	1526	1545	rBV	276845	527570	34.69%	5.671%
11	6.539	1603	1617	1649	rBV	811051	1520640	100.00%	16.346%
12	6.687	1650	1663	1691	rVB	216801	433517	28.51%	4.660%
13	7.565	1923	1936	1961	rBV	98942	177197	11.65%	1.905%
14	7.896	2024	2039	2060	rBV	400415	705431	46.39%	7.583%
15	8.179	2115	2127	2141	rBV2	61074	104097	6.85%	1.119%
16	8.472	2209	2218	2231	rVB3	9387	16172	1.06%	0.174%
17	8.552	2231	2243	2257	rBV2	182956	311463	20.48%	3.348%
18	8.632	2257	2268	2296	rBV2	444891	865631	56.93%	9.305%
19	9.417	2497	2512	2545	rBV	408325	686503	45.15%	7.379%
20	10.754	2914	2928	2946	rBV	175910	287739	18.92%	3.093%
21	10.889	2960	2970	2983	rVB3	15417	25785	1.70%	0.277%
22	11.809	3244	3256	3281	rBV	312459	514506	33.83%	5.531%
23	12.060	3324	3334	3352	rBV	38299	71061	4.67%	0.764%
24	12.192	3362	3375	3395	rBV	342321	570437	37.51%	6.132%

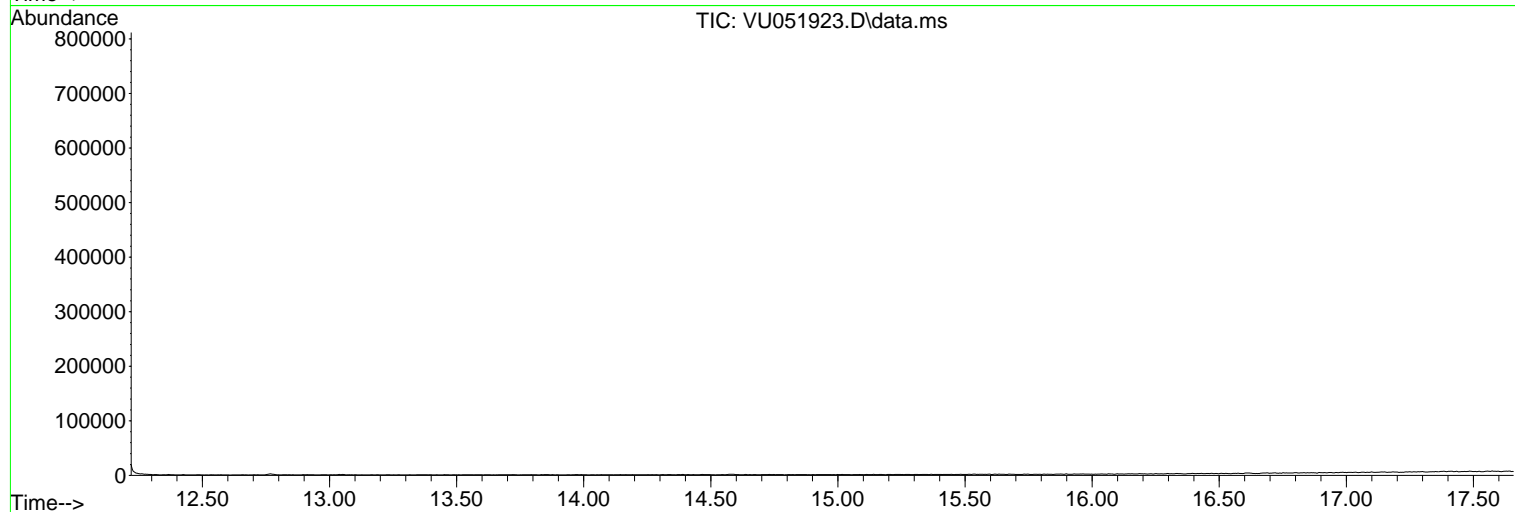
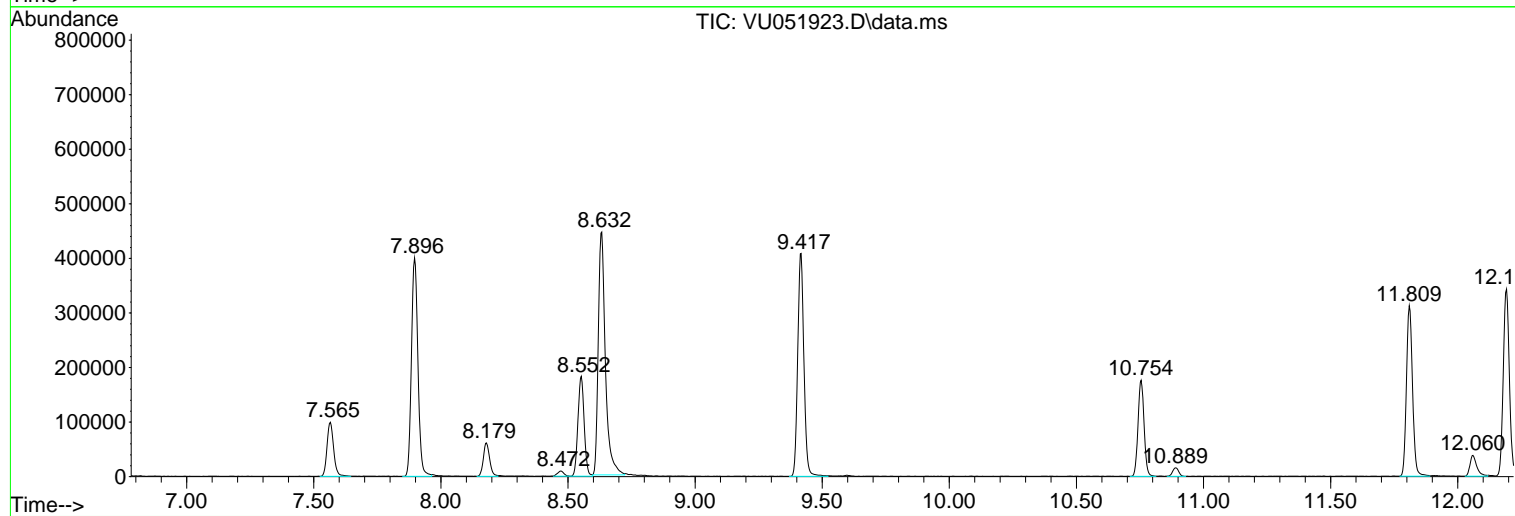
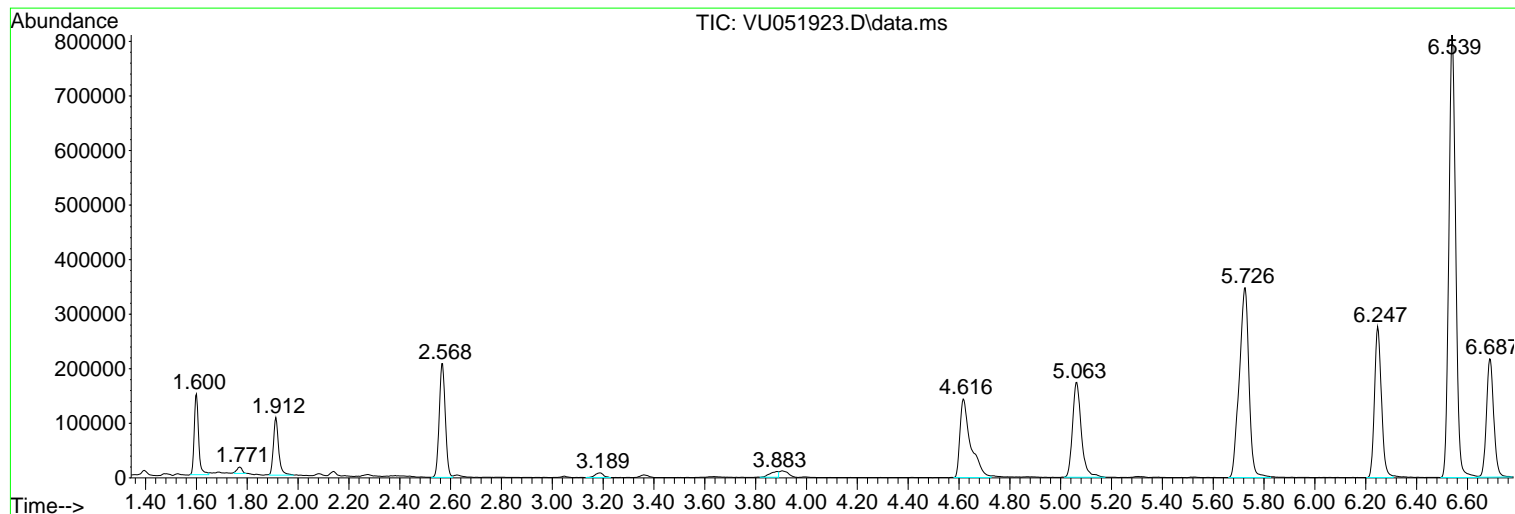
Sum of corrected areas: 9302848

Data Path : Z:\voasrv\HPCHEM1\MSVOA_U\Data\VU111922\
Data File : VU051923.D
Acq On : 19 Nov 2022 00:23
Operator : JC/MD
Sample : N5684-12
Misc : 25.0mL/MSVOA_U/WATER
ALS Vial : 24 Sample Multiplier: 1

Instrument :
MSVOA_U
ClientSampleId :
BH1J2

Quant Method : Z:\voasrv\HPCHEM1\MSVOA_U\Method\SFAMUTR111822WMA.M
Quant Title : TRACE VOA SFAM1.0

TIC Library : C:\Database\NIST20.L
TIC Integration Parameters: LSCINT.P



Data Path : Z:\voasrv\HPCHEM1\MSVOA_U\Data\VU111922\
 Data File : VU051923.D
 Acq On : 19 Nov 2022 00:23
 Operator : JC/MD
 Sample : N5684-12
 Misc : 25.0mL/MSVOA_U/WATER
 ALS Vial : 24 Sample Multiplier: 1

Instrument :
 MSVOA_U
 ClientSampleId :
 BH1J2

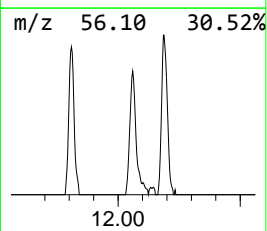
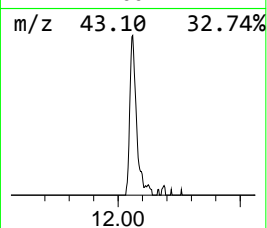
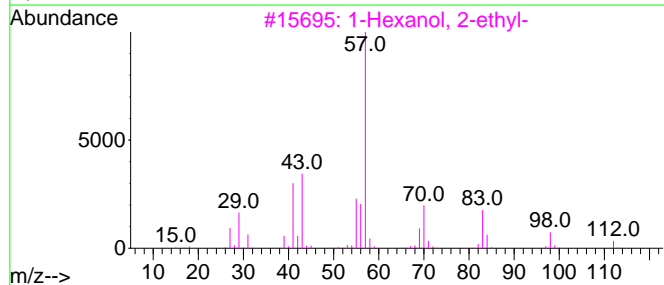
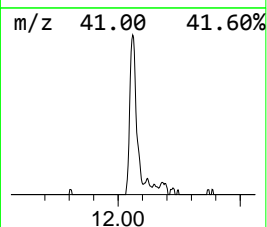
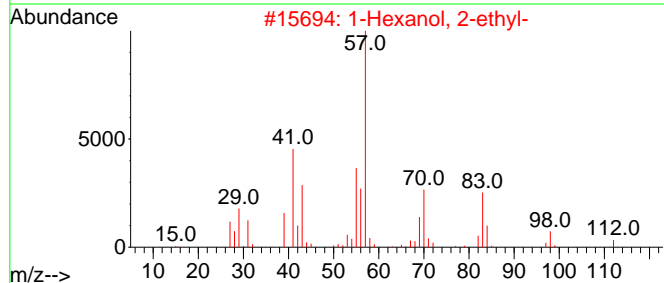
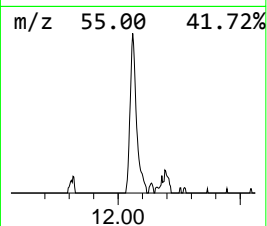
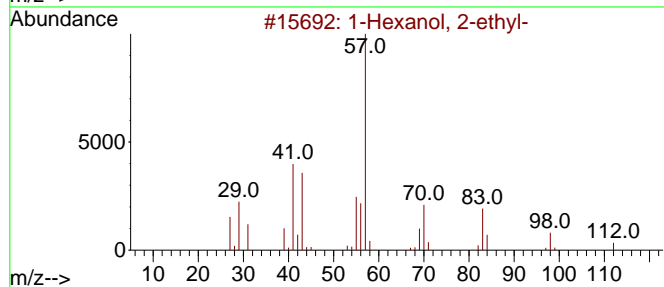
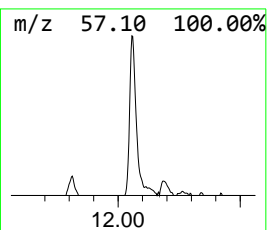
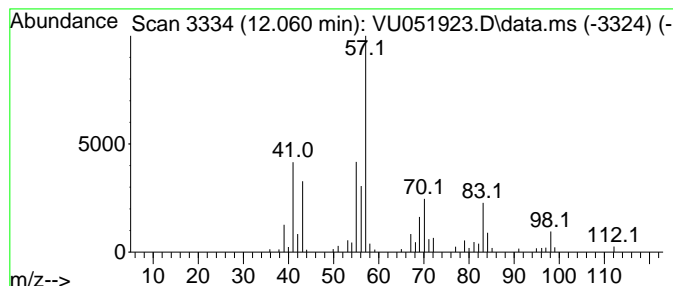
Quant Method : Z:\voasrv\HPCHEM1\MSVOA_U\Method\SFAMUTR111822WMA.M
 Quant Title : TRACE VOA SFAM1.0

TIC Library : C:\Database\NIST20.L
 TIC Integration Parameters: LSCINT.P

 Peak Number 2 1-Hexanol, 2-ethyl- Concentration Rank 2

R.T.	EstConc	Area	Relative to ISTD	R.T.
12.060	0.69 ug/L	71061	1,4-Dichlorobenzene-d4	11.809

Hit#	of 5	Tentative ID	MW	MolForm	CAS#	Qual
1		1-Hexanol, 2-ethyl-	130	C8H18O	000104-76-7	78
2		1-Hexanol, 2-ethyl-	130	C8H18O	000104-76-7	64
3		1-Hexanol, 2-ethyl-	130	C8H18O	000104-76-7	59
4		2-Propyl-1-pentanol	130	C8H18O	058175-57-8	53
5		2-Propyl-1-pentanol	130	C8H18O	058175-57-8	53



Data Path : Z:\voasrv\HPCHEM1\MSVOA_U\Data\VU111922\
Data File : VU051923.D
Acq On : 19 Nov 2022 00:23
Operator : JC/MD
Sample : N5684-12
Misc : 25.0mL/MSVOA_U/WATER
ALS Vial : 24 Sample Multiplier: 1

Instrument :
MSVOA_U
ClientSampleId :
BH1J2

Quant Method : Z:\voasrv\HPCHEM1\MSVOA_U\Method\SFAMUTR111822WMA.M
Quant Title : TRACE VOA SFAM1.0

TIC Library : C:\Database\NIST20.L
TIC Integration Parameters: LSCINT.P

TIC Top Hit name	RT	EstConc	Units	Response	--Internal Standard--			
					#	RT	Resp	Conc
1-Hexanol, 2-et...	12.060	0.7	ug/L	71061	3	11.809	514506	5.0