

Data Path : Z:\voasrv\HPCHEM1\MSVOA_U\Data\VU112122\
 Data File : VU052006.D
 Acq On : 21 Nov 2022 19:47
 Operator : JC/MD
 Sample : N5683-09
 Misc : 5.0mL/MSVOA_U/WATER
 ALS Vial : 18 Sample Multiplier: 1

Instrument :
 MSVOA_U
 ClientSampleId :
 VHBLK001

Integration Parameters: LSCINT.P

Integrator: RTE
 Smoothing : OFF
 Sampling : 1
 Start Thrs: 0.2
 Stop Thrs : 0

Filtering: 5
 Min Area: 0 % of largest Peak
 Max Peaks: 100
 Peak Location: TOP

If leading or trailing edge < 100 prefer < Baseline drop else tangent >
 Peak separation: 5

Method : Z:\voasrv\HPCHEM1\MSVOA_U\Method\SFAMULM112122WMA.M
 Title : VOC Analysis

Signal : TIC: VU052006.D\data.ms

peak #	R.T. min	first scan	max scan	last scan	PK TY	peak height	corr. area	corr. % max.	% of total
1	1.601	74	81	95	rBV	250871	288398	15.76%	2.127%
2	1.906	168	176	204	rVB	181701	272751	14.90%	2.011%
3	2.565	369	381	395	rBV	368383	594399	32.47%	4.383%
4	2.755	430	440	462	rBV	24285	50095	2.74%	0.369%
5	3.044	521	530	546	rVB4	5988	12127	0.66%	0.089%
6	3.102	546	548	550	rBV	369	172	0.01%	0.001%
7	3.183	560	573	595	rVB	31666	72358	3.95%	0.534%
8	3.292	604	607	609	rBV	241	136	0.01%	0.001%
9	3.459	657	659	662	rBV	161	97	0.01%	0.001%
10	3.491	666	669	673	rBV	397	384	0.02%	0.003%
11	3.536	680	683	685	rBV2	198	137	0.01%	0.001%
12	3.613	704	707	711	rBV2	278	254	0.01%	0.002%
13	3.652	716	719	721	rBV2	253	137	0.01%	0.001%
14	3.774	754	757	758	rBV	110	67	0.00%	0.000%
15	3.822	768	772	776	rVB2	219	171	0.01%	0.001%
16	3.845	776	779	782	rBV	137	115	0.01%	0.001%
17	3.887	787	792	795	rBV2	284	286	0.02%	0.002%
18	3.964	813	816	820	rBV2	373	286	0.02%	0.002%
19	4.054	840	844	845	rBV	177	82	0.00%	0.001%
20	4.067	845	848	850	rVB	155	84	0.00%	0.001%
21	4.083	850	853	856	rVB2	185	128	0.01%	0.001%
22	4.105	856	860	862	rBV	312	215	0.01%	0.002%
23	4.144	869	872	874	rBV	137	83	0.00%	0.001%
24	4.273	910	912	915	rVB2	220	126	0.01%	0.001%
25	4.292	915	918	922	rBV2	199	150	0.01%	0.001%
26	4.311	922	924	927	rVB2	337	162	0.01%	0.001%
27	4.327	927	929	932	rVB2	125	64	0.00%	0.000%
28	4.350	932	936	939	rBV	318	243	0.01%	0.002%
29	4.414	954	956	958	rBV	126	61	0.00%	0.000%
30	4.433	959	962	966	rVV2	176	163	0.01%	0.001%
31	4.491	977	980	981	rBV	133	75	0.00%	0.001%
32	4.617	1008	1019	1047	rBV	182440	446082	24.37%	3.289%
33	5.060	1141	1157	1184	rBV	324367	712403	38.92%	5.253%
34	5.244	1212	1214	1220	rBV4	376	304	0.02%	0.002%
35	5.279	1220	1225	1226	rBV	564	487	0.03%	0.004%
36	5.340	1241	1244	1248	rVB3	497	296	0.02%	0.002%

Data Path : Z:\voasrv\HPCHEM1\MSVOA_U\Data\VU112122\
 Data File : VU052006.D
 Acq On : 21 Nov 2022 19:47
 Operator : JC/MD
 Sample : N5683-09
 Misc : 5.0mL/MSVOA_U/WATER
 ALS Vial : 18 Sample Multiplier: 1

Instrument :
 MSVOA_U
 ClientSampleId :
 VHBLK001

Integration Parameters: LSCINT.P

Integrator: RTE
 Smoothing : OFF
 Sampling : 1
 Start Thrs : 0.2
 Stop Thrs : 0

Filtering: 5
 Min Area: 0 % of largest Peak
 Max Peaks: 100
 Peak Location: TOP

If leading or trailing edge < 100 prefer < Baseline drop else tangent >
 Peak separation: 5

Method : Z:\voasrv\HPCHEM1\MSVOA_U\Method\SFAMULM112122WMA.M
 Title : VOC Analysis

37	5.366	1248	1252	1254	rBV	358	307	0.02%	0.002%
38	5.379	1254	1256	1257	rBV2	356	118	0.01%	0.001%
39	5.523	1296	1301	1303	rBV3	447	318	0.02%	0.002%
40	5.597	1322	1324	1326	rBV2	157	78	0.00%	0.001%
41	5.723	1341	1363	1391	rBV2	677782	1830438	100.00%	13.498%
42	6.028	1457	1458	1459	rBV	293	86	0.00%	0.001%
43	6.044	1459	1463	1467	rVB3	696	628	0.03%	0.005%
44	6.166	1499	1501	1505	rVB2	345	219	0.01%	0.002%
45	6.247	1511	1526	1546	rBV	554384	1050512	57.39%	7.747%
46	6.533	1607	1615	1626	rVB8	2364	4528	0.25%	0.033%
47	6.578	1626	1629	1631	rBV3	498	296	0.02%	0.002%
48	6.687	1649	1663	1686	rBV	429997	832482	45.48%	6.139%
49	6.954	1743	1746	1748	rBV2	160	105	0.01%	0.001%
50	7.038	1770	1772	1775	rVB2	151	84	0.00%	0.001%
51	7.060	1775	1779	1784	rVB	227	217	0.01%	0.002%
52	7.099	1787	1791	1795	rBV2	231	176	0.01%	0.001%
53	7.128	1795	1800	1808	rBV2	349	456	0.02%	0.003%
54	7.182	1812	1817	1819	rBV2	696	628	0.03%	0.005%
55	7.266	1841	1843	1846	rBV2	181	92	0.01%	0.001%
56	7.321	1858	1860	1866	rVB2	221	196	0.01%	0.001%
57	7.362	1870	1873	1875	rBV	171	108	0.01%	0.001%
58	7.379	1875	1878	1879	rBV	192	113	0.01%	0.001%
59	7.436	1894	1896	1900	rVB	125	85	0.00%	0.001%
60	7.459	1900	1903	1904	rBV	218	137	0.01%	0.001%
61	7.562	1923	1935	1953	rBV	211539	375892	20.54%	2.772%
62	7.748	1990	1993	1996	rBV2	584	485	0.03%	0.004%
63	7.806	2003	2011	2016	rVB5	1070	1671	0.09%	0.012%
64	7.832	2016	2019	2021	rBV2	353	233	0.01%	0.002%
65	7.848	2021	2024	2025	rBV2	225	120	0.01%	0.001%
66	7.896	2025	2039	2060	rBV	801566	1378244	75.30%	10.163%
67	8.176	2115	2126	2147	rBV	149167	249043	13.61%	1.836%
68	8.549	2237	2242	2251	rVB6	1964	2698	0.15%	0.020%
69	8.629	2256	2267	2312	rVV2	494150	946215	51.69%	6.977%
70	8.954	2363	2368	2371	rBV2	395	428	0.02%	0.003%
71	8.993	2378	2380	2386	rVB2	461	265	0.01%	0.002%
72	9.031	2390	2392	2398	rVB2	292	182	0.01%	0.001%
73	9.067	2398	2403	2404	rBV2	400	318	0.02%	0.002%
74	9.076	2404	2406	2409	rVV2	201	90	0.00%	0.001%
75	9.141	2421	2426	2430	rBV3	514	489	0.03%	0.004%
76	9.240	2454	2457	2460	rBV2	261	189	0.01%	0.001%

Data Path : Z:\voasrv\HPCHEM1\MSVOA_U\Data\VU112122\
 Data File : VU052006.D
 Acq On : 21 Nov 2022 19:47
 Operator : JC/MD
 Sample : N5683-09
 Misc : 5.0mL/MSVOA_U/WATER
 ALS Vial : 18 Sample Multiplier: 1

Instrument :
 MSVOA_U
 ClientSampleId :
 VHBLK001

Integration Parameters: LSCINT.P

Integrator: RTE
 Smoothing : OFF
 Sampling : 1
 Start Thrs : 0.2
 Stop Thrs : 0

Filtering: 5
 Min Area: 0 % of largest Peak
 Max Peaks: 100
 Peak Location: TOP

If leading or trailing edge < 100 prefer < Baseline drop else tangent >
 Peak separation: 5

Method : Z:\voasrv\HPCHEM1\MSVOA_U\Method\SFAMULM112122WMA.M
 Title : VOC Analysis

77	9.353	2490	2492	2495	rBV2	281	126	0.01%	0.001%
78	9.414	2498	2511	2540	rBV	770402	1285883	70.25%	9.482%
79	9.620	2572	2575	2577	rBV3	565	320	0.02%	0.002%
80	9.649	2582	2584	2586	rBV	369	158	0.01%	0.001%
81	9.687	2590	2596	2598	rBV5	1486	1268	0.07%	0.009%
82	9.803	2630	2632	2636	rVB2	349	181	0.01%	0.001%
83	9.822	2636	2638	2639	rBV	215	78	0.00%	0.001%
84	9.870	2651	2653	2655	rVB2	244	82	0.00%	0.001%
85	9.890	2656	2659	2666	rBV2	297	374	0.02%	0.003%
86	9.928	2668	2671	2675	rVB	351	238	0.01%	0.002%
87	10.108	2724	2727	2733	rBV4	1333	1117	0.06%	0.008%
88	10.401	2814	2818	2822	rVB2	413	293	0.02%	0.002%
89	10.485	2840	2844	2845	rBV2	743	603	0.03%	0.004%
90	10.751	2915	2927	2945	rBV	628562	1021470	55.80%	7.532%
91	11.176	3056	3059	3061	rBV2	192	141	0.01%	0.001%
92	11.195	3063	3065	3069	rVV2	275	186	0.01%	0.001%
93	11.411	3129	3132	3136	rBV2	414	371	0.02%	0.003%
94	11.742	3231	3235	3243	rBV3	1290	1648	0.09%	0.012%
95	11.809	3244	3256	3284	rBV	601995	984782	53.80%	7.262%
96	12.073	3332	3338	3343	rBV7	1707	2430	0.13%	0.018%
97	12.189	3361	3374	3402	rBV	663041	1112603	60.78%	8.204%
98	12.629	3507	3511	3516	rBV2	332	351	0.02%	0.003%
99	13.224	3689	3696	3707	rBV6	3248	5136	0.28%	0.038%
100	14.330	4033	4040	4049	rBV6	5451	8566	0.47%	0.063%

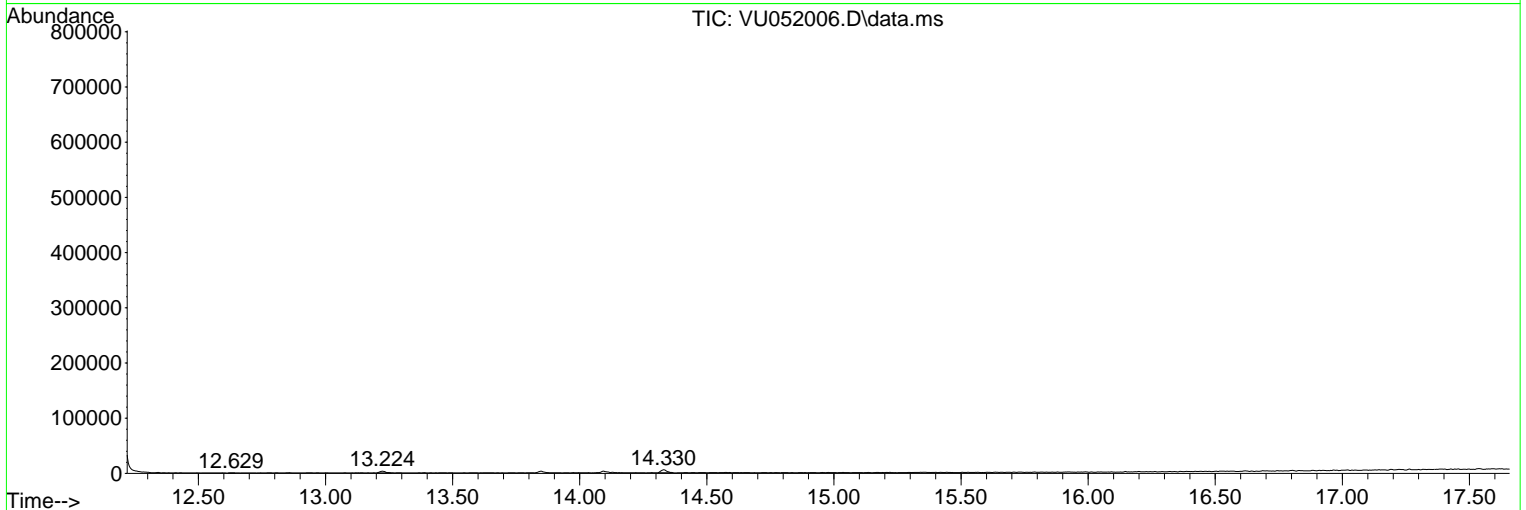
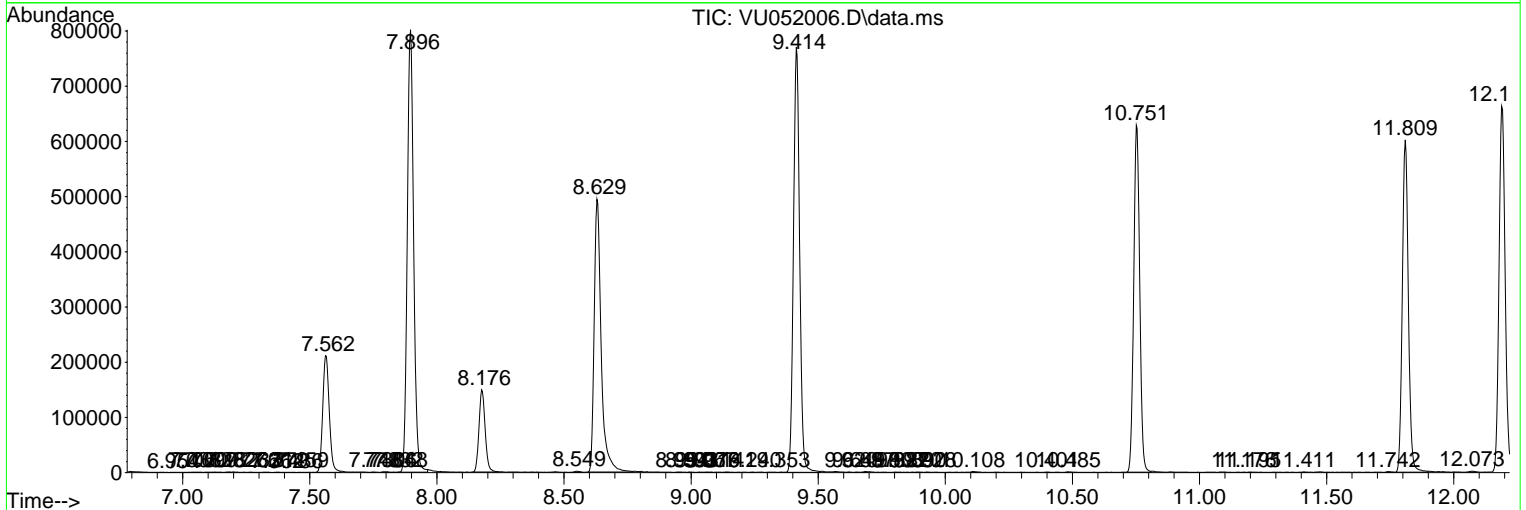
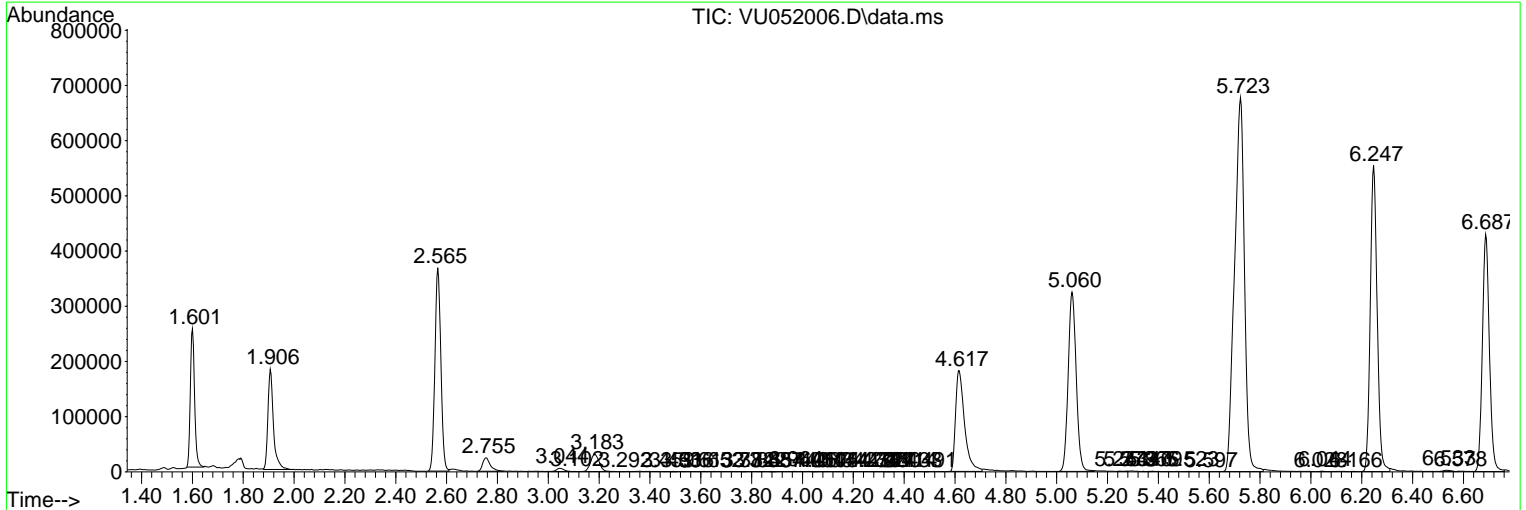
Sum of corrected areas: 13560952

Data Path : Z:\voasrv\HPCHEM1\MSVOA_U\Data\VU112122\
 Data File : VU052006.D
 Acq On : 21 Nov 2022 19:47
 Operator : JC/MD
 Sample : N5683-09
 Misc : 5.0mL/MSVOA_U/WATER
 ALS Vial : 18 Sample Multiplier: 1

Instrument :
 MSVOA_U
 ClientSampleId :
 VHBLK001

Quant Method : Z:\voasrv\HPCHEM1\MSVOA_U\Method\SFAMULM112122WMA.M
 Quant Title : VOC Analysis

TIC Library : C:\Database\NIST20.L
 TIC Integration Parameters: LSCINT.P



Library Search Compound Report

Data Path : Z:\voasrv\HPCHEM1\MSVOA_U\Data\VU112122\
Data File : VU052006.D
Acq On : 21 Nov 2022 19:47
Operator : JC/MD
Sample : N5683-09
Misc : 5.0mL/MSVOA_U/WATER
ALS Vial : 18 Sample Multiplier: 1

Instrument :
MSVOA_U
ClientSampleId :
VHBLK001

Quant Method : Z:\voasrv\HPCHEM1\MSVOA_U\Method\SFAMULM112122WMA.M
Quant Title : VOC Analysis

TIC Library : C:\Database\NIST20.L
TIC Integration Parameters: LSCINT.P

No Library Search Compounds Detected

Data Path : Z:\voasrv\HPCHEM1\MSVOA_U\Data\VU112122\
Data File : VU052006.D
Acq On : 21 Nov 2022 19:47
Operator : JC/MD
Sample : N5683-09
Misc : 5.0mL/MSVOA_U/WATER
ALS Vial : 18 Sample Multiplier: 1

Instrument :
MSVOA_U
ClientSampleId :
VHBLK001

Quant Method : Z:\voasrv\HPCHEM1\MSVOA_U\Method\SFAMULM112122WMA.M
Quant Title : VOC Analysis

TIC Library : C:\Database\NIST0.L
TIC Integration Parameters: LSCINT.P

TIC Top Hit name	RT	EstConc	Units	Response	--Internal Standard--		
					#	RT	Resp Conc
