

Data Path : Z:\voasrv\HPCHEM1\MSVOA_U\Data\VU112122\
 Data File : VU052040.D
 Acq On : 22 Nov 2022 13:23
 Operator : JC/MD
 Sample : N5737-07
 Misc : 5.0mL/MSVOA_U/WATER
 ALS Vial : 56 Sample Multiplier: 1

Instrument :
 MSVOA_U
 ClientSampleId :
 VHBLK001

Integration Parameters: LSCINT.P

Integrator: RTE
 Smoothing : OFF
 Sampling : 1
 Start Thrs : 0.2
 Stop Thrs : 0

Filtering: 5
 Min Area: 0 % of largest Peak
 Max Peaks: 100
 Peak Location: TOP

If leading or trailing edge < 100 prefer < Baseline drop else tangent >
 Peak separation: 5

Method : Z:\voasrv\HPCHEM1\MSVOA_U\Method\SFAMULM112122WMA.M
 Title : VOC Analysis

Signal : TIC: VU052040.D\data.ms

peak #	R.T. min	first scan	max scan	last scan	PK TY	peak height	corr. area	corr. % max.	% of total
1	1.601	74	81	95	rVB	251978	283507	15.31%	2.112%
2	1.906	168	176	201	rVB	180628	273920	14.79%	2.041%
3	2.565	368	381	398	rBV	368673	600338	32.41%	4.472%
4	2.919	488	491	495	rBV	332	298	0.02%	0.002%
5	2.954	499	502	504	rVV2	326	217	0.01%	0.002%
6	2.980	508	510	515	rVV3	321	244	0.01%	0.002%
7	3.047	521	531	540	rBV3	4634	8334	0.45%	0.062%
8	3.182	561	573	587	rBV2	7979	17015	0.92%	0.127%
9	3.266	595	599	605	rBV3	347	367	0.02%	0.003%
10	3.308	610	612	616	rVB	326	201	0.01%	0.001%
11	3.327	616	618	619	rBV	201	89	0.00%	0.001%
12	3.372	631	632	634	rVB	106	22	0.00%	0.000%
13	3.382	634	635	636	rBV	93	22	0.00%	0.000%
14	3.391	636	638	641	rBV2	200	100	0.01%	0.001%
15	3.427	647	649	652	rBV	160	68	0.00%	0.001%
16	3.475	661	664	666	rBV	204	138	0.01%	0.001%
17	3.565	689	692	693	rBV2	219	128	0.01%	0.001%
18	3.607	702	705	709	rBV2	172	186	0.01%	0.001%
19	3.626	709	711	713	rBV	176	108	0.01%	0.001%
20	3.674	723	726	731	rBV2	346	228	0.01%	0.002%
21	3.707	735	736	737	rBV2	152	45	0.00%	0.000%
22	3.771	752	756	758	rBV	614	535	0.03%	0.004%
23	3.925	801	804	807	rBV2	414	251	0.01%	0.002%
24	4.195	886	888	890	rBV2	202	120	0.01%	0.001%
25	4.250	903	905	909	rVB2	251	141	0.01%	0.001%
26	4.292	912	918	926	rBV2	323	525	0.03%	0.004%
27	4.372	939	943	946	rBV2	237	165	0.01%	0.001%
28	4.395	949	950	955	rVB2	205	91	0.00%	0.001%
29	4.530	987	992	994	rBV	185	167	0.01%	0.001%
30	4.559	999	1001	1006	rVB	216	123	0.01%	0.001%
31	4.617	1007	1019	1051	rBV	175086	437697	23.63%	3.261%
32	5.060	1142	1157	1188	rBV	328551	719306	38.84%	5.359%
33	5.340	1238	1244	1249	rBV4	483	698	0.04%	0.005%
34	5.366	1249	1252	1262	rVB5	383	550	0.03%	0.004%
35	5.427	1269	1271	1274	rVB2	206	84	0.00%	0.001%
36	5.446	1274	1277	1279	rVB	292	132	0.01%	0.001%

Data Path : Z:\voasrv\HPCHEM1\MSVOA_U\Data\VU112122\
 Data File : VU052040.D
 Acq On : 22 Nov 2022 13:23
 Operator : JC/MD
 Sample : N5737-07
 Misc : 5.0mL/MSVOA_U/WATER
 ALS Vial : 56 Sample Multiplier: 1

Instrument :
 MSVOA_U
 ClientSampleId :
 VHBLK001

Integration Parameters: LSCINT.P

Integrator: RTE
 Smoothing : OFF
 Sampling : 1
 Start Thrs : 0.2
 Stop Thrs : 0

Filtering: 5
 Min Area: 0 % of largest Peak
 Max Peaks: 100
 Peak Location: TOP

If leading or trailing edge < 100 prefer < Baseline drop else tangent >
 Peak separation: 5

Method : Z:\voasrv\HPCHEM1\MSVOA_U\Method\SFAMULM112122WMA.M
 Title : VOC Analysis

37	5.485	1287	1289	1291	rBV	144	85	0.00%	0.001%
38	5.498	1291	1293	1297	rVB2	174	111	0.01%	0.001%
39	5.530	1300	1303	1304	rBV2	195	120	0.01%	0.001%
40	5.568	1313	1315	1318	rBV2	118	66	0.00%	0.000%
41	5.623	1329	1332	1336	rBV2	279	197	0.01%	0.001%
42	5.723	1341	1363	1383	rBV2	685363	1852122	100.00%	13.798%
43	6.031	1452	1459	1462	rBV3	551	748	0.04%	0.006%
44	6.163	1499	1500	1501	rVB3	113	22	0.00%	0.000%
45	6.195	1508	1510	1512	rBV	142	38	0.00%	0.000%
46	6.247	1512	1526	1555	rBV	536918	1039212	56.11%	7.742%
47	6.636	1643	1647	1649	rBV	416	313	0.02%	0.002%
48	6.687	1649	1663	1696	rVV	435106	848282	45.80%	6.320%
49	6.944	1738	1743	1744	rBV2	300	244	0.01%	0.002%
50	6.980	1752	1754	1756	rBV2	117	69	0.00%	0.001%
51	7.034	1767	1771	1781	rBV2	377	473	0.03%	0.004%
52	7.112	1792	1795	1800	rBV2	251	201	0.01%	0.001%
53	7.131	1800	1801	1802	rVV	172	37	0.00%	0.000%
54	7.144	1802	1805	1810	rVB	336	241	0.01%	0.002%
55	7.250	1833	1838	1841	rBV	313	298	0.02%	0.002%
56	7.301	1851	1854	1856	rBV	290	147	0.01%	0.001%
57	7.350	1866	1869	1871	rBV	231	176	0.01%	0.001%
58	7.407	1884	1887	1889	rBV	60	37	0.00%	0.000%
59	7.430	1890	1894	1896	rVV2	213	143	0.01%	0.001%
60	7.446	1897	1899	1904	rVB	309	216	0.01%	0.002%
61	7.475	1905	1908	1911	rBV	199	173	0.01%	0.001%
62	7.562	1920	1935	1959	rBV	207391	373978	20.19%	2.786%
63	7.758	1991	1996	2000	rVB3	474	473	0.03%	0.004%
64	7.803	2000	2010	2014	rBV4	822	1301	0.07%	0.010%
65	7.896	2025	2039	2067	rBV	798569	1369834	73.96%	10.205%
66	8.176	2112	2126	2152	rBV	149805	251674	13.59%	1.875%
67	8.391	2191	2193	2196	rBV	435	211	0.01%	0.002%
68	8.443	2206	2209	2210	rBV	252	137	0.01%	0.001%
69	8.549	2238	2242	2247	rVB5	727	727	0.04%	0.005%
70	8.629	2255	2267	2298	rBV2	491466	949835	51.28%	7.076%
71	9.025	2389	2390	2392	rVB2	146	30	0.00%	0.000%
72	9.063	2398	2402	2405	rBV2	308	314	0.02%	0.002%
73	9.083	2405	2408	2412	rVV2	585	515	0.03%	0.004%
74	9.121	2416	2420	2424	rBV3	422	382	0.02%	0.003%
75	9.140	2424	2426	2432	rVB3	427	315	0.02%	0.002%
76	9.304	2474	2477	2478	rBV	178	91	0.00%	0.001%

Data Path : Z:\voasrv\HPCHEM1\MSVOA_U\Data\VU112122\
 Data File : VU052040.D
 Acq On : 22 Nov 2022 13:23
 Operator : JC/MD
 Sample : N5737-07
 Misc : 5.0mL/MSVOA_U/WATER
 ALS Vial : 56 Sample Multiplier: 1

Instrument :
 MSVOA_U
 ClientSampleId :
 VHBLK001

Integration Parameters: LSCINT.P

Integrator: RTE
 Smoothing : OFF Filtering: 5
 Sampling : 1 Min Area: 0 % of largest Peak
 Start Thrs: 0.2 Max Peaks: 100
 Stop Thrs : 0 Peak Location: TOP

If leading or trailing edge < 100 prefer < Baseline drop else tangent >
 Peak separation: 5

Method : Z:\voasrv\HPCHEM1\MSVOA_U\Method\SFAMULM112122WMA.M
 Title : VOC Analysis

77	9.414	2498	2511	2553	rBV	767429	1286819	69.48%	9.587%
78	9.693	2592	2598	2600	rBV3	759	826	0.04%	0.006%
79	9.764	2618	2620	2624	rBV2	285	171	0.01%	0.001%
80	9.947	2674	2677	2680	rBV2	260	197	0.01%	0.001%
81	9.986	2687	2689	2696	rVB2	373	259	0.01%	0.002%
82	10.021	2696	2700	2702	rBV	257	196	0.01%	0.001%
83	10.202	2751	2756	2758	rBV	348	253	0.01%	0.002%
84	10.234	2762	2766	2768	rBV2	250	223	0.01%	0.002%
85	10.308	2785	2789	2793	rBV2	221	218	0.01%	0.002%
86	10.481	2840	2843	2847	rBV2	521	528	0.03%	0.004%
87	10.597	2877	2879	2886	rBV2	313	358	0.02%	0.003%
88	10.751	2915	2927	2947	rBV	629945	1017067	54.91%	7.577%
89	11.118	3038	3041	3044	rVB2	341	235	0.01%	0.002%
90	11.298	3095	3097	3099	rBV	255	133	0.01%	0.001%
91	11.365	3116	3118	3120	rVB2	202	76	0.00%	0.001%
92	11.382	3120	3123	3125	rBV2	217	125	0.01%	0.001%
93	11.404	3128	3130	3133	rBV2	403	229	0.01%	0.002%
94	11.809	3244	3256	3274	rBV	599537	962871	51.99%	7.173%
95	12.189	3361	3374	3407	rBV	677588	1111154	59.99%	8.278%
96	13.221	3692	3695	3705	rVB4	1197	1539	0.08%	0.011%

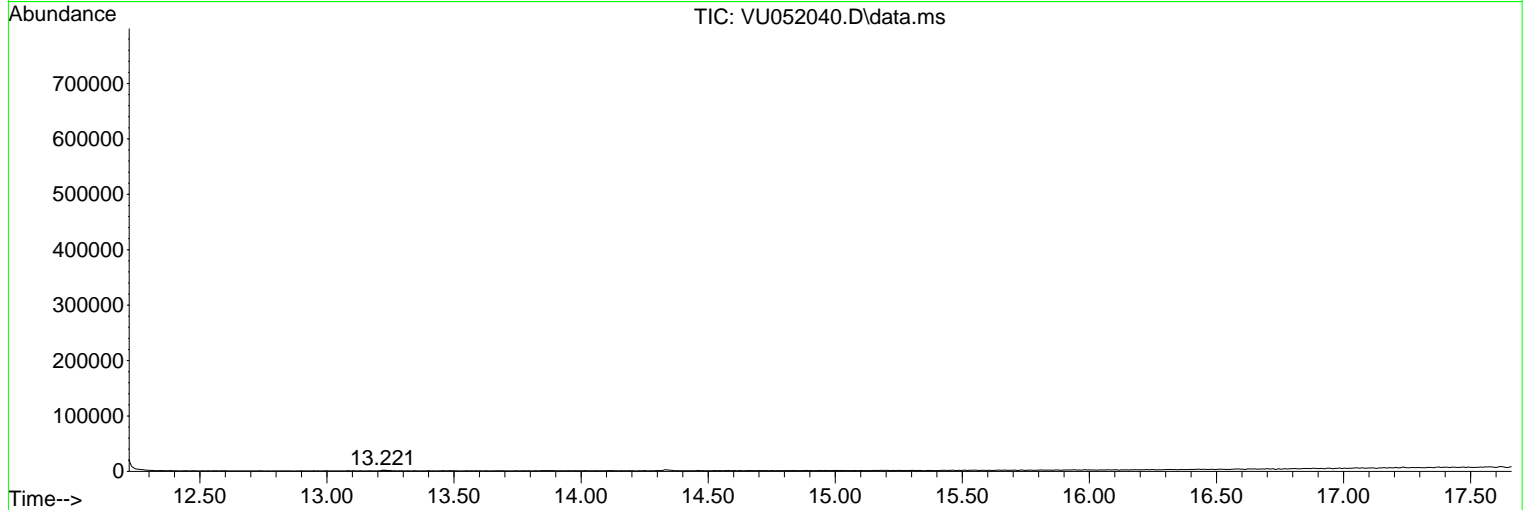
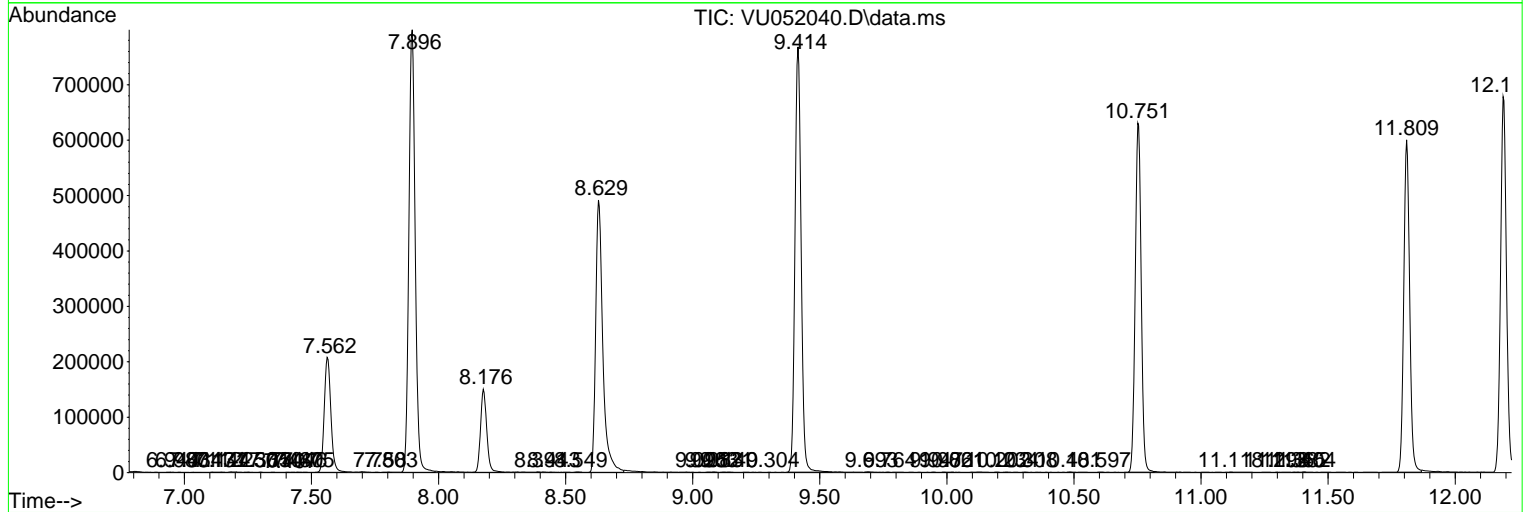
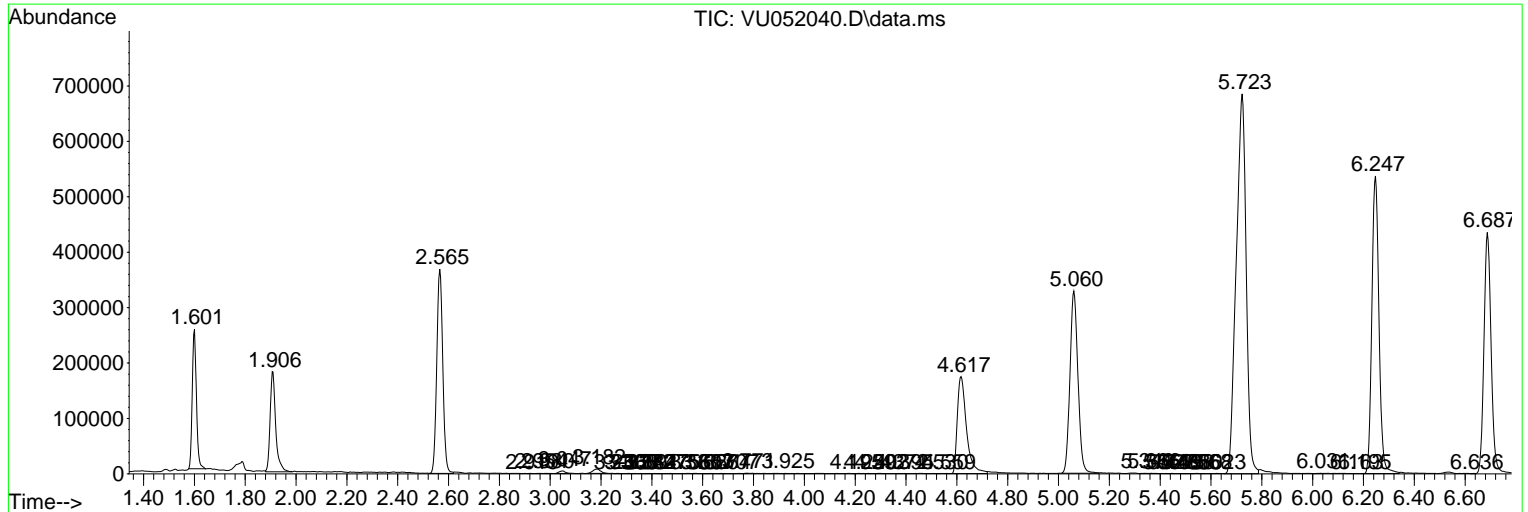
Sum of corrected areas: 13423225

Data Path : Z:\voasrv\HPCHEM1\MSVOA_U\Data\VU112122\
 Data File : VU052040.D
 Acq On : 22 Nov 2022 13:23
 Operator : JC/MD
 Sample : N5737-07
 Misc : 5.0mL/MSVOA_U/WATER
 ALS Vial : 56 Sample Multiplier: 1

Instrument :
 MSVOA_U
ClientSampleId :
 VHBLK001

Quant Method : Z:\voasrv\HPCHEM1\MSVOA_U\Method\SFAMULM112122WMA.M
 Quant Title : VOC Analysis

TIC Library : C:\Database\NIST20.L
 TIC Integration Parameters: LSCINT.P



Library Search Compound Report

Data Path : Z:\voasrv\HPCHEM1\MSVOA_U\Data\VU112122\
Data File : VU052040.D
Acq On : 22 Nov 2022 13:23
Operator : JC/MD
Sample : N5737-07
Misc : 5.0mL/MSVOA_U/WATER
ALS Vial : 56 Sample Multiplier: 1

Instrument :
MSVOA_U
ClientSampleId :
VHBLK001

Quant Method : Z:\voasrv\HPCHEM1\MSVOA_U\Method\SFAMULM112122WMA.M
Quant Title : VOC Analysis

TIC Library : C:\Database\NIST20.L
TIC Integration Parameters: LSCINT.P

No Library Search Compounds Detected

Data Path : Z:\voasrv\HPCHEM1\MSVOA_U\Data\VU112122\
Data File : VU052040.D
Acq On : 22 Nov 2022 13:23
Operator : JC/MD
Sample : N5737-07
Misc : 5.0mL/MSVOA_U/WATER
ALS Vial : 56 Sample Multiplier: 1

Instrument :
MSVOA_U
ClientSampleId :
VHBLK001

Quant Method : Z:\voasrv\HPCHEM1\MSVOA_U\Method\SFAMULM112122WMA.M
Quant Title : VOC Analysis

TIC Library : C:\Database\NIST0.L
TIC Integration Parameters: LSCINT.P

TIC Top Hit name	RT	EstConc	Units	Response	--Internal Standard--		
					#	RT	Resp Conc
