

Data Path : Z:\voasrv\HPCHEM1\MSVOA_U\Data\VU112124\
 Data File : VU061939.D
 Acq On : 22 Nov 2024 00:50
 Operator : MD/SY
 Sample : P4903-17
 Misc : 25mL/MSVOA_U/WATER
 ALS Vial : 34 Sample Multiplier: 1

Instrument :
 MSVOA_U
 ClientSampleId :
 BG436

Quant Time: Nov 22 04:16:25 2024
 Quant Method : Z:\voasrv\HPCHEM1\MSVOA_U\Method\SFAMUTR112024WMA.M
 Quant Title : TRACE VOA SFAM1.0
 QLast Update : Fri Nov 22 00:07:48 2024
 Response via : Initial Calibration

Compound	R.T.	QIon	Response	Conc	Units	Dev(Min)

Internal Standards						
1) 1,4-Difluorobenzene	6.242	114	132215	5.000	ug/L	0.00
28) Chlorobenzene-d5	9.409	117	126822	5.000	ug/L	0.00
58) 1,4-Dichlorobenzene-d4	11.804	152	55180	5.000	ug/L	0.00
System Monitoring Compounds						
4) Vinyl Chloride-d3	1.596	65	39547	6.098	ug/L	0.00
Spiked Amount	5.000	Range 40 - 130	Recovery	=	122.000%	
7) Chloroethane-d5	1.907	69	30685	5.349	ug/L	0.00
Spiked Amount	5.000	Range 65 - 130	Recovery	=	107.000%	
11) 1,1-Dichloroethene-d2	2.560	65	17332	6.689	ug/L	0.00
Spiked Amount	5.000	Range 60 - 125	Recovery	=	133.800%#	
20) 2-Butanone-d5	4.611	46	83883	41.189	ug/L	0.00
Spiked Amount	50.000	Range 40 - 130	Recovery	=	82.380%	
24) Chloroform-d	5.052	84	79398	5.018	ug/L	0.00
Spiked Amount	5.000	Range 70 - 125	Recovery	=	100.400%	
26) 1,2-Dichloroethane-d4	5.692	65	41538	5.101	ug/L	0.00
Spiked Amount	5.000	Range 70 - 130	Recovery	=	102.000%	
32) Benzene-d6	5.718	84	157809	6.387	ug/L	0.00
Spiked Amount	5.000	Range 70 - 125	Recovery	=	127.800%#	
36) 1,2-Dichloropropane-d6	6.682	67	50564	6.022	ug/L	0.00
Spiked Amount	5.000	Range 60 - 140	Recovery	=	120.400%	
41) Toluene-d8	7.888	98	140267	6.806	ug/L	0.00
Spiked Amount	5.000	Range 70 - 130	Recovery	=	136.200%#	
43) trans-1,3-Dichloroprop...	8.174	79	16417	5.282	ug/L	0.00
Spiked Amount	5.000	Range 55 - 130	Recovery	=	105.600%	
46) 2-Hexanone-d5	8.624	63	60632	42.737	ug/L	0.00
Spiked Amount	50.000	Range 45 - 130	Recovery	=	85.480%	
56) 1,1,2,2-Tetrachloroeth...	10.746	84	38357	4.572	ug/L	0.00
Spiked Amount	5.000	Range 65 - 120	Recovery	=	91.400%	
66) 1,2-Dichlorobenzene-d4	12.184	152	46598	5.711	ug/L	0.00
Spiked Amount	5.000	Range 80 - 120	Recovery	=	114.200%	

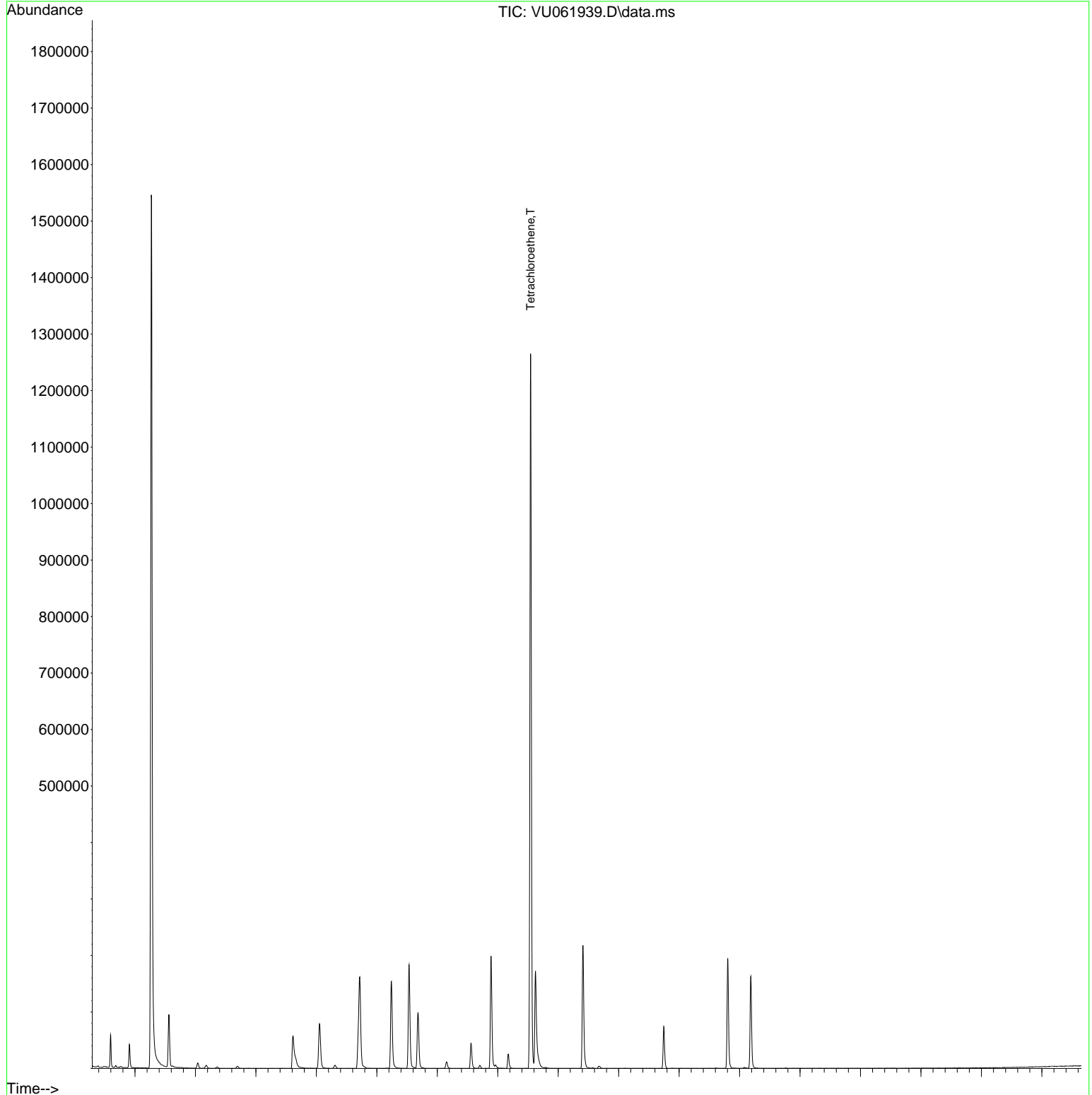
Target Compounds						Qvalue
16) Methylene chloride	3.039	84	4622	0.434	ug/L	94
22) cis-1,2-Dichloroethene	4.663	96	5683	0.539	ug/L	96
29) 1,1,1-Trichloroethane	5.306	97	4686	0.321	ug/L	97
34) Trichloroethene	6.531	95	68944	6.745	ug/L	97
47) Tetrachloroethene	8.544	164	276085	37.136	ug/L	97

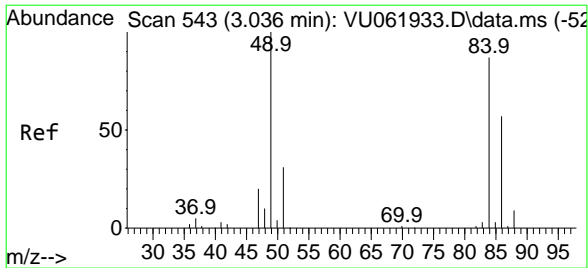
(#) = qualifier out of range (m) = manual integration (+) = signals summed

Data Path : Z:\voasrv\HPCHEM1\MSVOA_U\Data\VU112124\
Data File : VU061939.D
Acq On : 22 Nov 2024 00:50
Operator : MD/SY
Sample : P4903-17
Misc : 25mL/MSVOA_U/WATER
ALS Vial : 34 Sample Multiplier: 1

Instrument :
MSVOA_U
ClientSampleId :
BG436

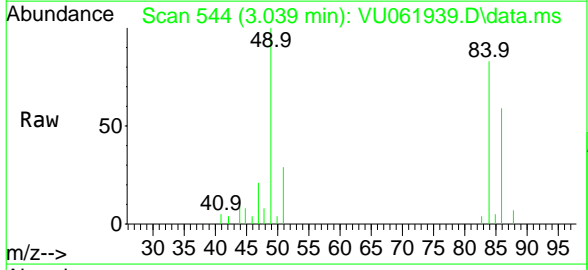
Quant Time: Nov 22 04:16:25 2024
Quant Method : Z:\voasrv\HPCHEM1\MSVOA_U\Method\SFAMUTR112024WMA.M
Quant Title : TRACE VOA SFAM1.0
QLast Update : Fri Nov 22 00:07:48 2024
Response via : Initial Calibration



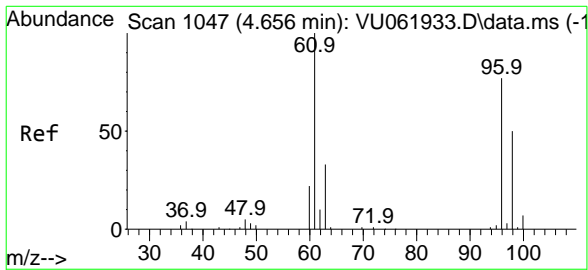
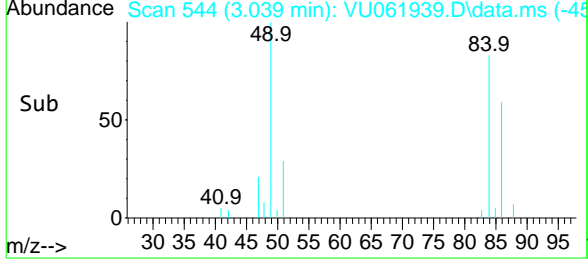
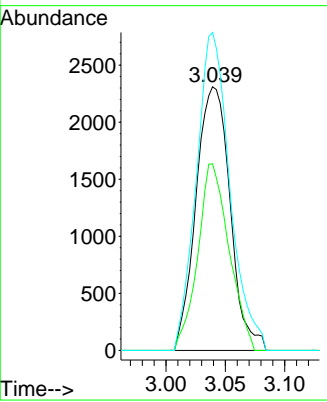


#16
 Methylene chloride
 Concen: 0.434 ug/L
 RT: 3.039 min Scan# 54
 Delta R.T. 0.003 min
 Lab File: VU061939.D
 Acq: 22 Nov 2024 00:50

Instrument :
 MSVOA_U
 ClientSampleId :
 BG436

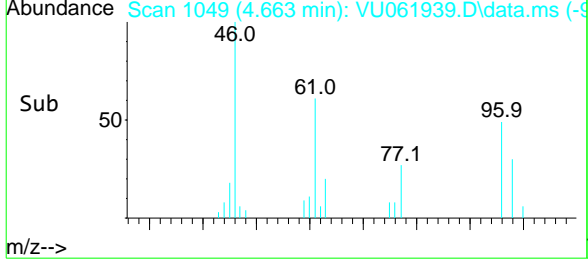
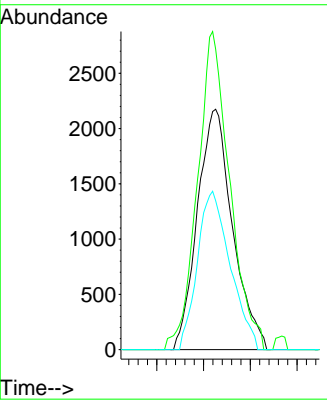
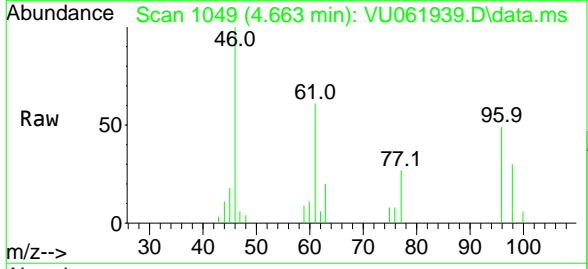


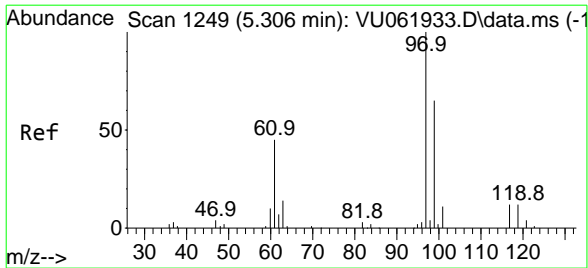
Tgt Ion	Resp	Lower	Upper
84	4622		
84	100		
86	70.8	43.5	80.7
49	120.6	81.9	152.1



#22
 cis-1,2-Dichloroethene
 Concen: 0.539 ug/L
 RT: 4.663 min Scan# 1049
 Delta R.T. 0.006 min
 Lab File: VU061939.D
 Acq: 22 Nov 2024 00:50

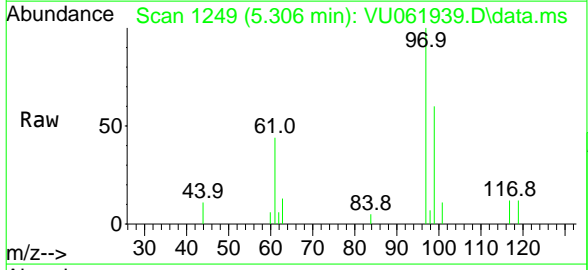
Tgt Ion	Resp	Lower	Upper
96	5683		
96	100		
61	125.0	92.0	170.8
98	61.9	44.5	82.7





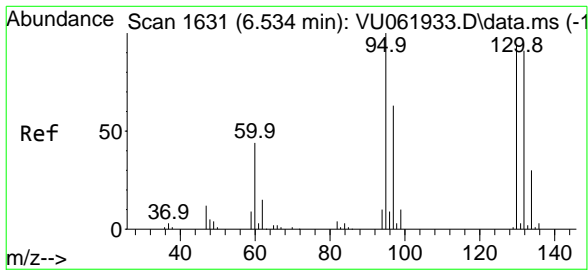
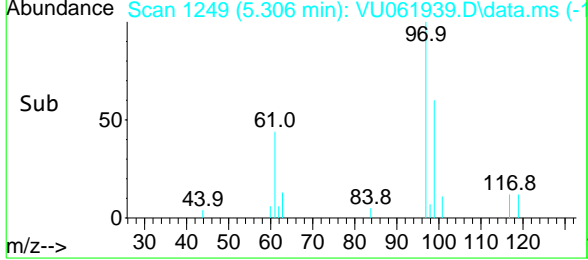
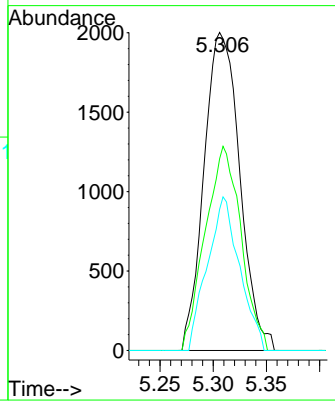
#29
 1,1,1-Trichloroethane
 Concen: 0.321 ug/L
 RT: 5.306 min Scan# 12
 Delta R.T. 0.000 min
 Lab File: VU061939.D
 Acq: 22 Nov 2024 00:50

Instrument : MSVOA_U
 ClientSampleId : BG436

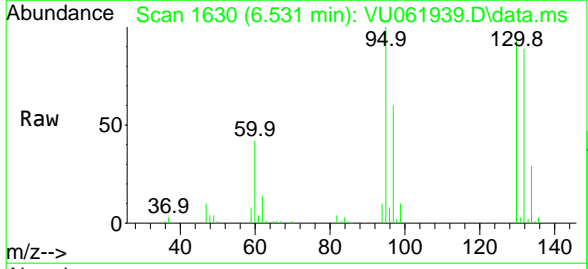


Tgt Ion: 97 Resp: 4686

Ion	Ratio	Lower	Upper
97	100		
99	64.1	51.4	77.2
61	43.4	37.8	56.6

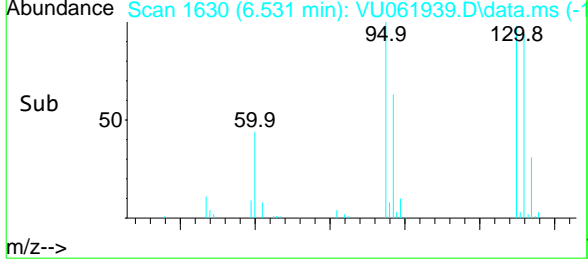
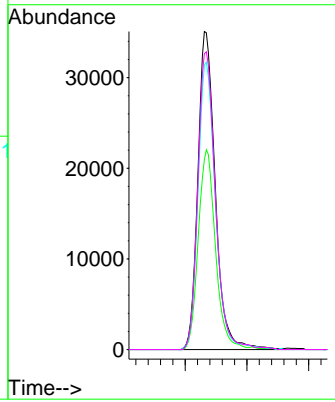


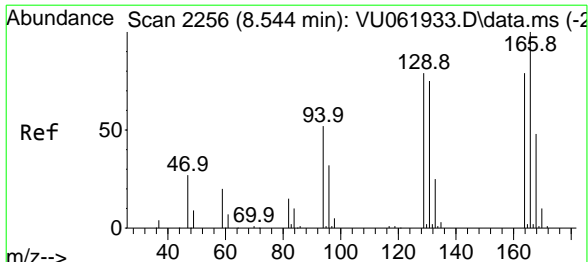
#34
 Trichloroethene
 Concen: 6.745 ug/L
 RT: 6.531 min Scan# 1630
 Delta R.T. -0.003 min
 Lab File: VU061939.D
 Acq: 22 Nov 2024 00:50



Tgt Ion: 95 Resp: 68944

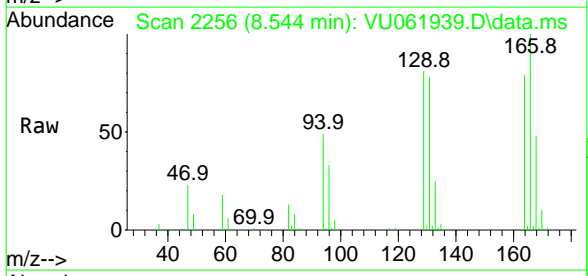
Ion	Ratio	Lower	Upper
95	100		
97	59.7	45.9	85.3
132	89.4	63.8	118.4
130	93.0	65.5	121.7





#47
 Tetrachloroethene
 Concen: 37.136 ug/L
 RT: 8.544 min Scan# 22
 Delta R.T. 0.000 min
 Lab File: VU061939.D
 Acq: 22 Nov 2024 00:50

Instrument : MSVOA_U
 ClientSampleId : BG436



Tgt Ion:164 Resp: 276085

Ion	Ratio	Lower	Upper
164	100		
129	102.1	73.2	136.0
131	98.3	72.3	134.3
166	126.4	90.2	167.4

