

Data Path : Z:\voasrv\HPCHEM1\MSVOA_U\Data\VU112124\
 Data File : VU061943.D
 Acq On : 22 Nov 2024 02:28
 Operator : MD/SY
 Sample : P4904-02
 Misc : 25mL/MSVOA_U/WATER
 ALS Vial : 38 Sample Multiplier: 1

Instrument :
 MSVOA_U
 ClientSampleId :
 BG412

Quant Time: Nov 22 04:34:42 2024
 Quant Method : Z:\voasrv\HPCHEM1\MSVOA_U\Method\SFAMUTR112024WMA.M
 Quant Title : TRACE VOA SFAM1.0
 QLast Update : Fri Nov 22 00:07:48 2024
 Response via : Initial Calibration

Compound	R.T.	QIon	Response	Conc	Units	Dev(Min)

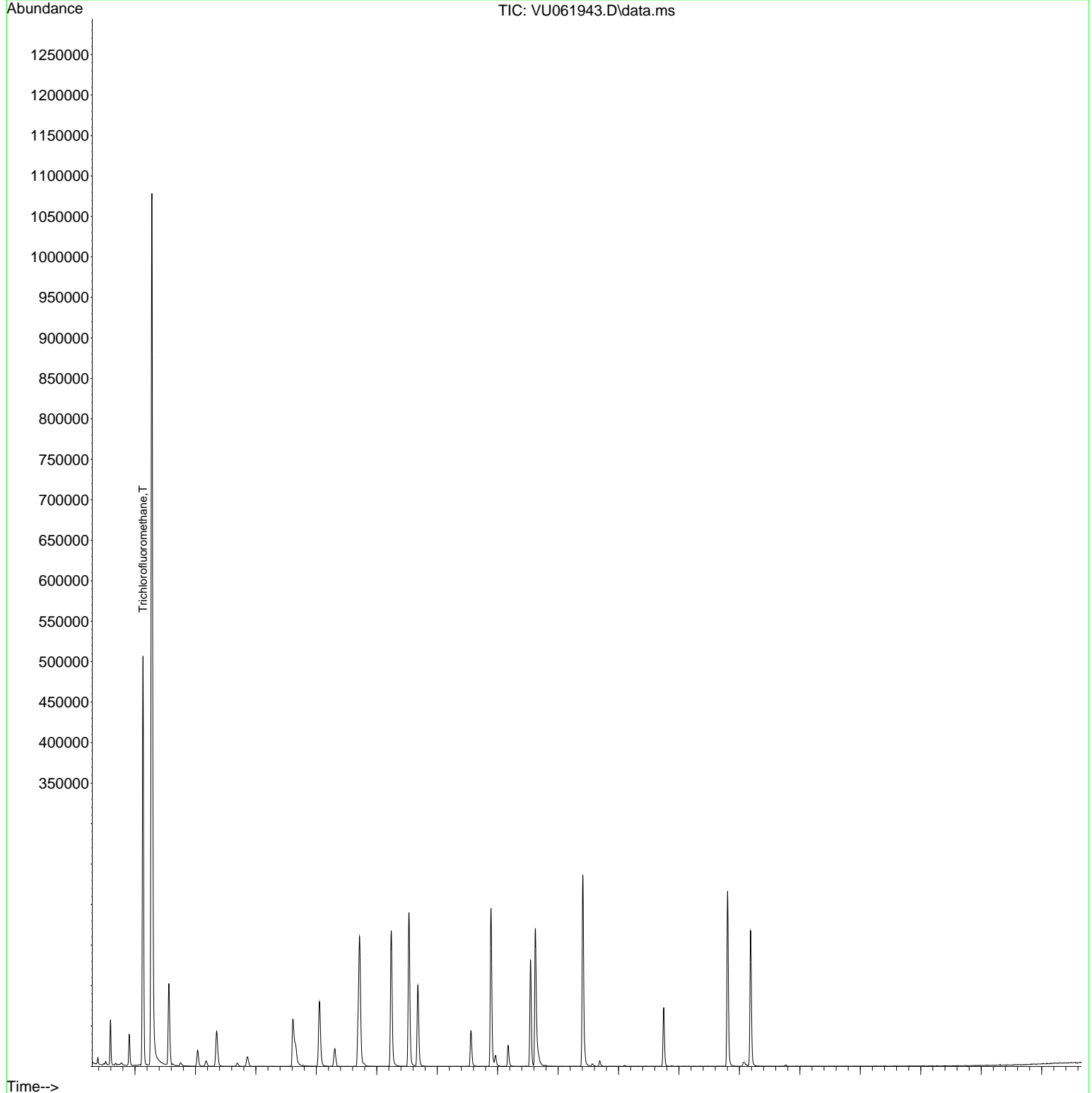
Internal Standards						
1) 1,4-Difluorobenzene	6.238	114	142853	5.000	ug/L	0.00
28) Chlorobenzene-d5	9.409	117	137162	5.000	ug/L	0.00
58) 1,4-Dichlorobenzene-d4	11.804	152	60990	5.000	ug/L	0.00
System Monitoring Compounds						
4) Vinyl Chloride-d3	1.595	65	39720	5.668	ug/L	0.00
Spiked Amount	5.000	Range 40 - 130	Recovery	=	113.400%	
7) Chloroethane-d5	1.904	69	29910	4.825	ug/L	0.00
Spiked Amount	5.000	Range 65 - 130	Recovery	=	96.600%	
11) 1,1-Dichloroethene-d2	2.560	65	17744	6.338	ug/L	0.00
Spiked Amount	5.000	Range 60 - 125	Recovery	=	126.800%#	
20) 2-Butanone-d5	4.611	46	88884	40.394	ug/L	0.00
Spiked Amount	50.000	Range 40 - 130	Recovery	=	80.780%	
24) Chloroform-d	5.052	84	77799	4.551	ug/L	0.00
Spiked Amount	5.000	Range 70 - 125	Recovery	=	91.000%	
26) 1,2-Dichloroethane-d4	5.692	65	40353	4.587	ug/L	0.00
Spiked Amount	5.000	Range 70 - 130	Recovery	=	91.800%	
32) Benzene-d6	5.718	84	154795	5.792	ug/L	0.00
Spiked Amount	5.000	Range 70 - 125	Recovery	=	115.800%	
36) 1,2-Dichloropropane-d6	6.679	67	50768	5.591	ug/L	0.00
Spiked Amount	5.000	Range 60 - 140	Recovery	=	111.800%	
41) Toluene-d8	7.891	98	136894	6.142	ug/L	0.00
Spiked Amount	5.000	Range 70 - 130	Recovery	=	122.800%	
43) trans-1,3-Dichloroprop...	8.174	79	16428	4.887	ug/L	0.00
Spiked Amount	5.000	Range 55 - 130	Recovery	=	97.800%	
46) 2-Hexanone-d5	8.624	63	58328	38.014	ug/L	0.00
Spiked Amount	50.000	Range 45 - 130	Recovery	=	76.020%	
56) 1,1,2,2-Tetrachloroeth...	10.746	84	38042	4.192	ug/L	0.00
Spiked Amount	5.000	Range 65 - 120	Recovery	=	83.800%	
66) 1,2-Dichlorobenzene-d4	12.183	152	46098	5.112	ug/L	0.00
Spiked Amount	5.000	Range 80 - 120	Recovery	=	102.200%	
Target Compounds						
						Qvalue
9) Trichlorofluoromethane	2.132	101	333507	19.920	ug/L	98
10) 1,1,2-Trichloro-1,2,2-...	2.573	101	5712	0.554	ug/L	96
12) 1,1-Dichloroethene	2.573	96	2935	0.306	ug/L #	1
16) Methylene chloride	3.036	84	10318	0.897	ug/L	93
17) Methyl tert-butyl Ether	3.354	73	34133	1.390	ug/L	97
18) trans-1,2-Dichloroethene	3.348	96	6541	0.646	ug/L	96
19) 1,1-Dichloroethane	3.856	63	15382	0.780	ug/L	97
22) cis-1,2-Dichloroethene	4.653	96	10057	0.882	ug/L	90
29) 1,1,1-Trichloroethane	5.306	97	17177	1.086	ug/L	96
34) Trichloroethene	6.531	95	70332	6.362	ug/L	99
42) Toluene	7.965	91	10970	0.252	ug/L	96
47) Tetrachloroethene	8.544	164	29232	3.636	ug/L	99
51) Chlorobenzene	9.441	112	5748	0.193	ug/L	97
53) m,p-Xylene	9.688	106	2438	0.133	ug/L	87

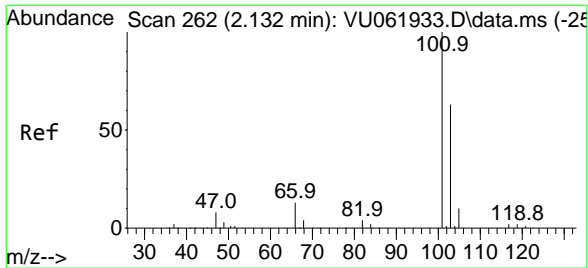
(#) = qualifier out of range (m) = manual integration (+) = signals summed

Data Path : Z:\voasrv\HPCHEM1\MSVOA_U\Data\VU112124\
Data File : VU061943.D
Acq On : 22 Nov 2024 02:28
Operator : MD/SY
Sample : P4904-02
Misc : 25mL/MSVOA_U/WATER
ALS Vial : 38 Sample Multiplier: 1

Instrument :
MSVOA_U
ClientSampleId :
BG412

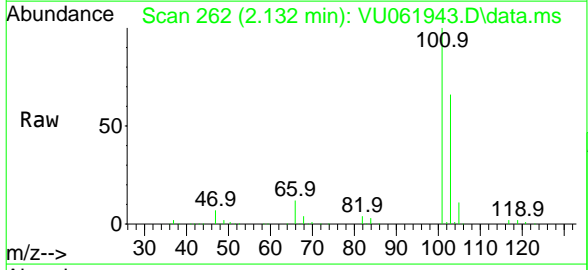
Quant Time: Nov 22 04:34:42 2024
Quant Method : Z:\voasrv\HPCHEM1\MSVOA_U\Method\SFAMUTR112024WMA.M
Quant Title : TRACE VOA SFAM1.0
QLast Update : Fri Nov 22 00:07:48 2024
Response via : Initial Calibration



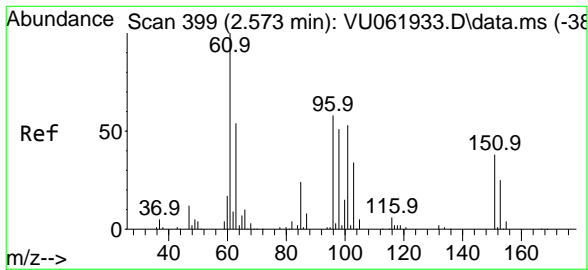
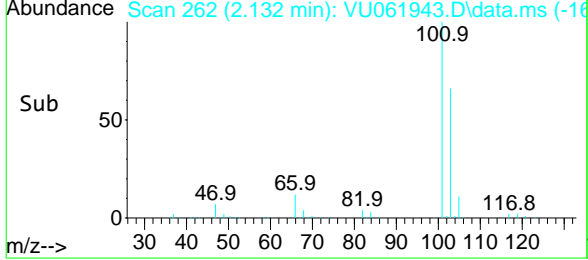
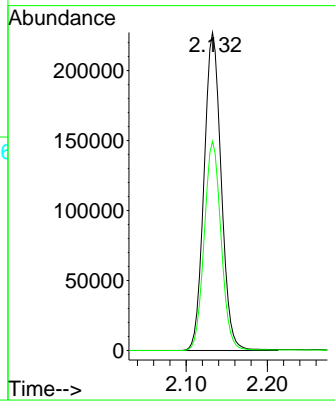


#9
 Trichlorofluoromethane
 Concen: 19.920 ug/L
 RT: 2.132 min Scan# 26
 Delta R.T. 0.000 min
 Lab File: VU061943.D
 Acq: 22 Nov 2024 02:28

Instrument : MSVOA_U
 ClientSampleId : BG412

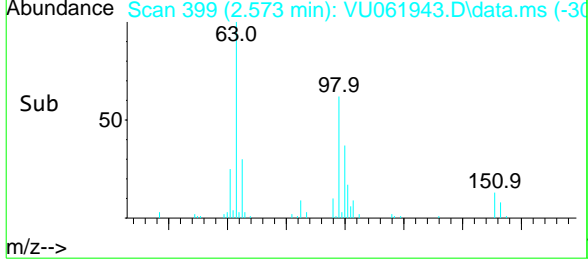
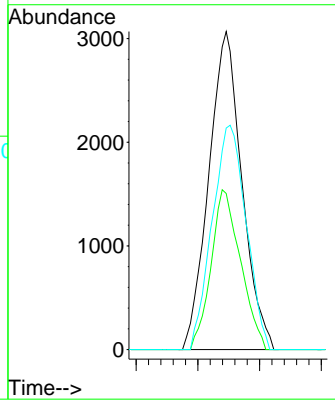
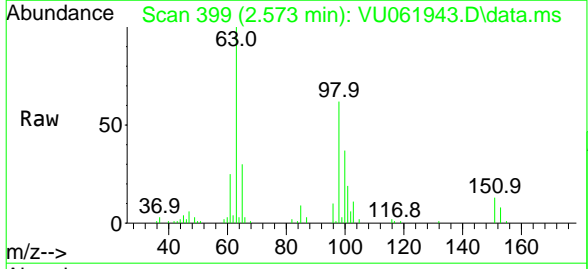


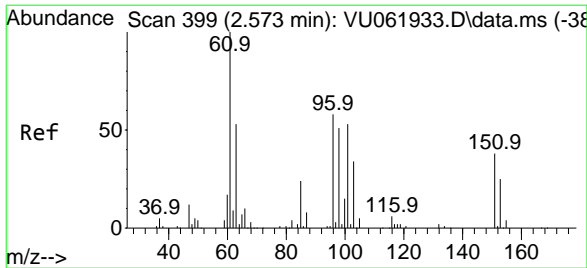
Tgt Ion:101 Resp: 333507
 Ion Ratio Lower Upper
 101 100
 103 64.5 50.6 75.8



#10
 1,1,2-Trichloro-1,2,2-trifluoroethane
 Concen: 0.554 ug/L
 RT: 2.573 min Scan# 399
 Delta R.T. 0.000 min
 Lab File: VU061943.D
 Acq: 22 Nov 2024 02:28

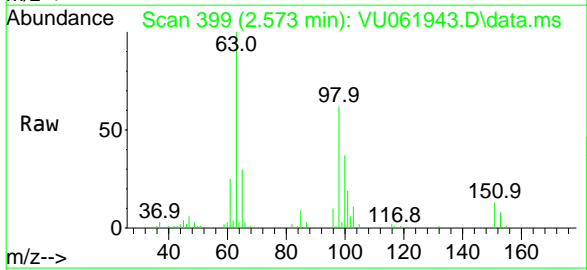
Tgt Ion:101 Resp: 5712
 Ion Ratio Lower Upper
 101 100
 85 44.8 38.0 57.0
 151 72.3 55.3 82.9



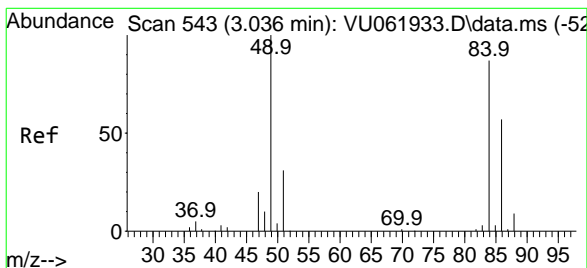
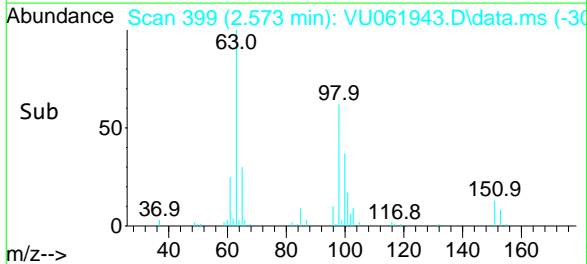
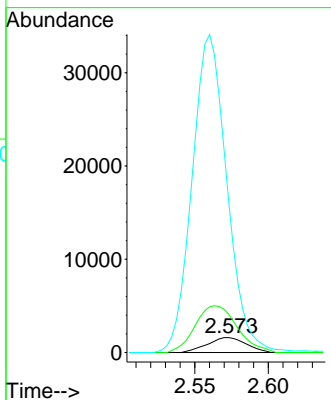


#12
 1,1-Dichloroethene
 Concen: 0.306 ug/L
 RT: 2.573 min Scan# 399
 Delta R.T. 0.000 min
 Lab File: VU061943.D
 Acq: 22 Nov 2024 02:28

Instrument : MSVOA_U
 ClientSampleId : BG412

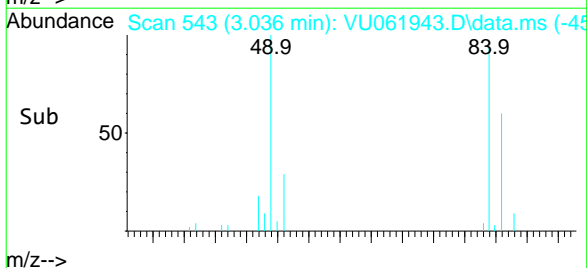
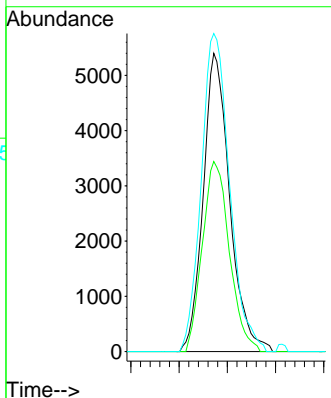
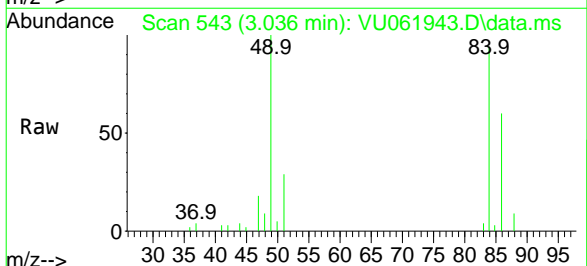


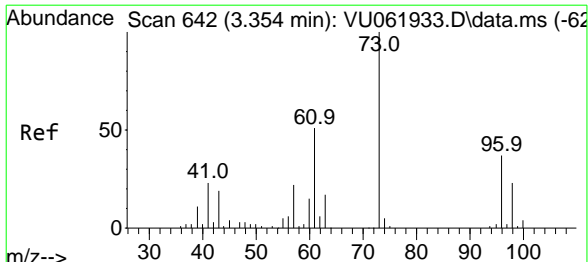
Tgt Ion	Resp	Lower	Upper
96	2935		
96	100		
61	258.5	119.6	222.2#
63	1028.1	65.0	120.6#



#16
 Methylene chloride
 Concen: 0.897 ug/L
 RT: 3.036 min Scan# 543
 Delta R.T. 0.000 min
 Lab File: VU061943.D
 Acq: 22 Nov 2024 02:28

Tgt Ion	Resp	Lower	Upper
84	10318		
84	100		
86	63.7	43.5	80.7
49	106.6	81.9	152.1

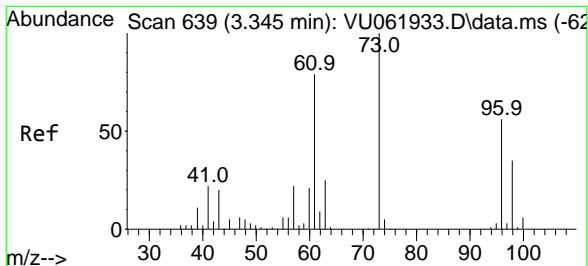
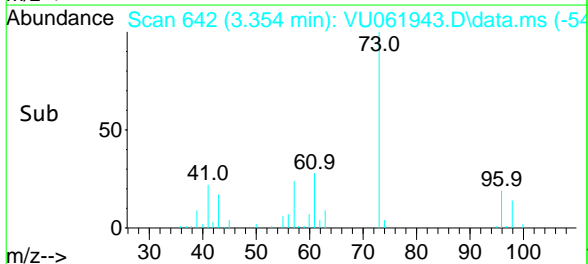
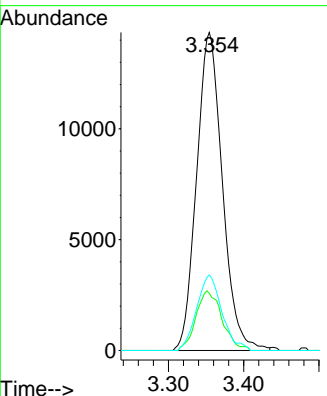
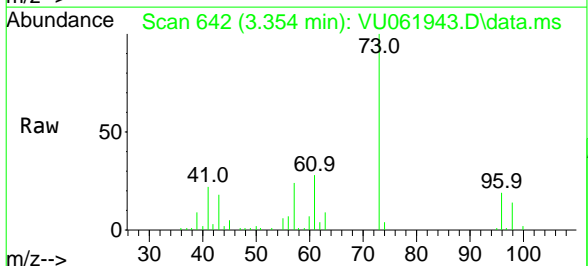




#17
 Methyl tert-butyl Ether
 Concen: 1.390 ug/L
 RT: 3.354 min Scan# 64
 Delta R.T. 0.000 min
 Lab File: VU061943.D
 Acq: 22 Nov 2024 02:28

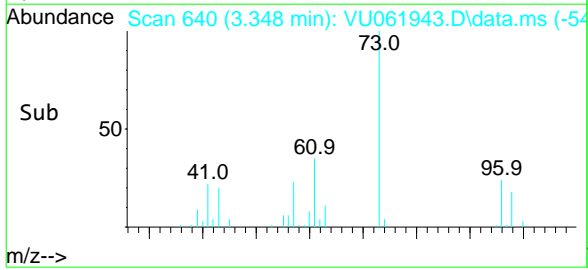
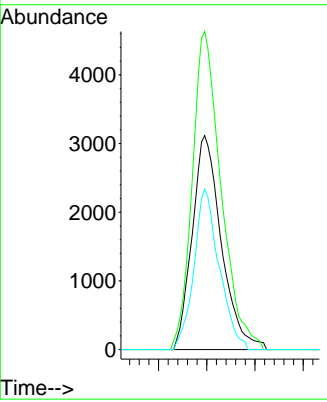
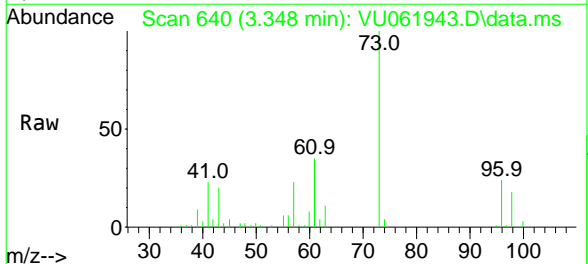
Instrument : MSVOA_U
 ClientSampleId : BG412

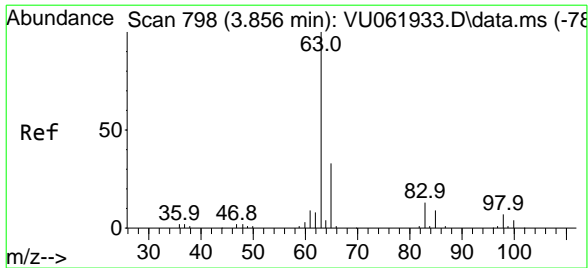
Tgt Ion	Resp	Lower	Upper
73	34133		
73	100		
43	19.0	16.3	24.5
57	23.2	17.1	25.7



#18
 trans-1,2-Dichloroethene
 Concen: 0.646 ug/L
 RT: 3.348 min Scan# 640
 Delta R.T. 0.003 min
 Lab File: VU061943.D
 Acq: 22 Nov 2024 02:28

Tgt Ion	Resp	Lower	Upper
96	6541		
96	100		
61	148.6	104.2	193.4
98	75.0	45.7	84.9

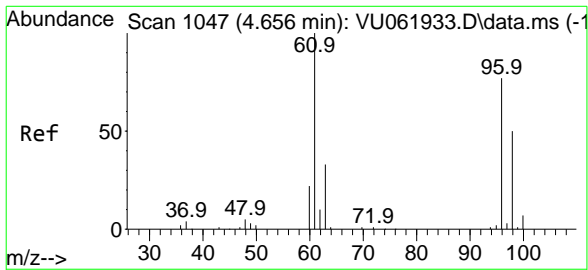
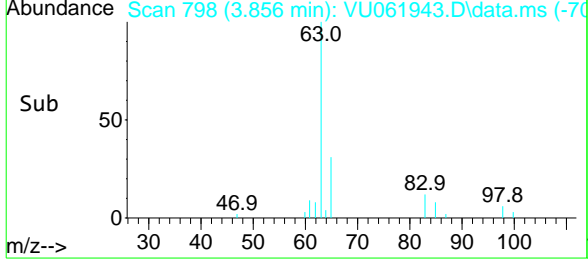
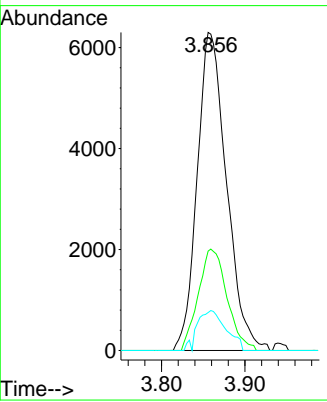
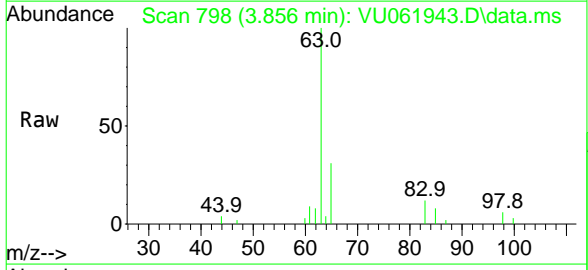




#19
 1,1-Dichloroethane
 Concen: 0.780 ug/L
 RT: 3.856 min Scan# 79
 Delta R.T. 0.000 min
 Lab File: VU061943.D
 Acq: 22 Nov 2024 02:28

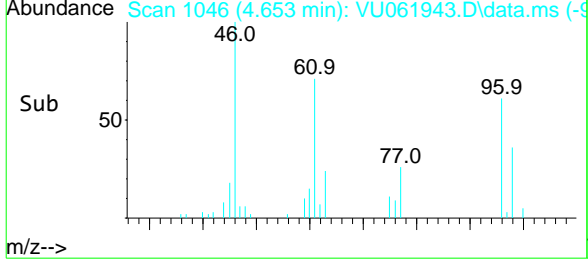
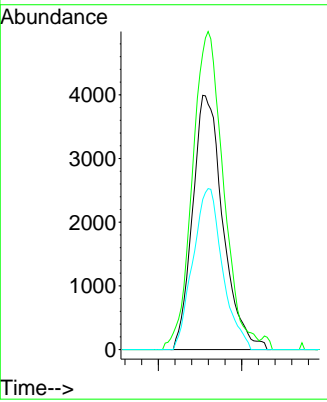
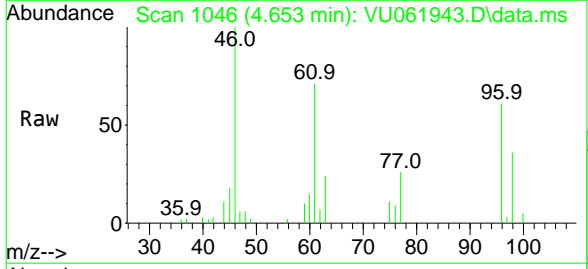
Instrument : MSVOA_U
 ClientSampleId : BG412

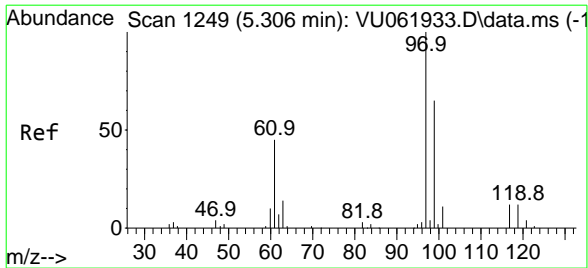
Tgt Ion	Resp	Lower	Upper
63	15382		
65	31.2	22.7	42.3
83	11.9	9.9	18.3



#22
 cis-1,2-Dichloroethene
 Concen: 0.882 ug/L
 RT: 4.653 min Scan# 1046
 Delta R.T. -0.003 min
 Lab File: VU061943.D
 Acq: 22 Nov 2024 02:28

Tgt Ion	Resp	Lower	Upper
96	10057		
61	116.6	92.0	170.8
98	59.1	44.5	82.7

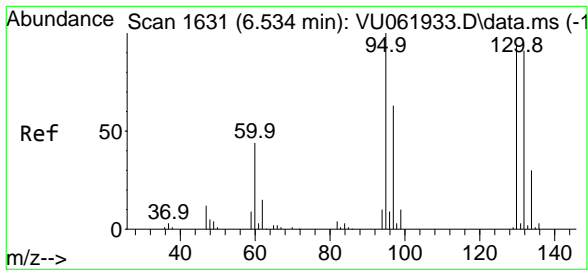
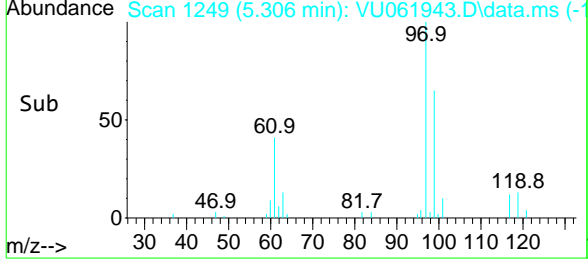
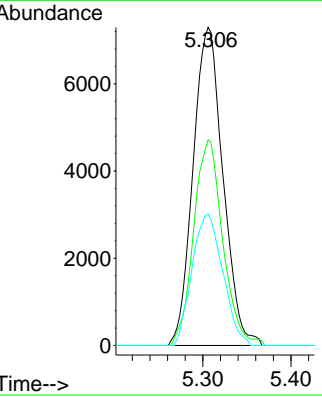
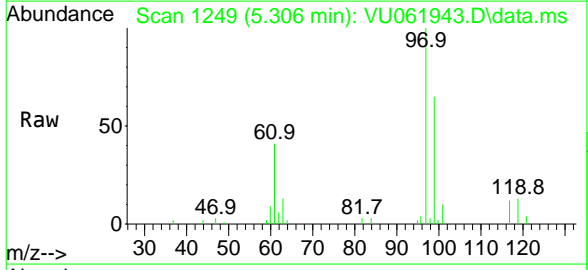




#29
 1,1,1-Trichloroethane
 Concen: 1.086 ug/L
 RT: 5.306 min Scan# 12
 Delta R.T. 0.000 min
 Lab File: VU061943.D
 Acq: 22 Nov 2024 02:28

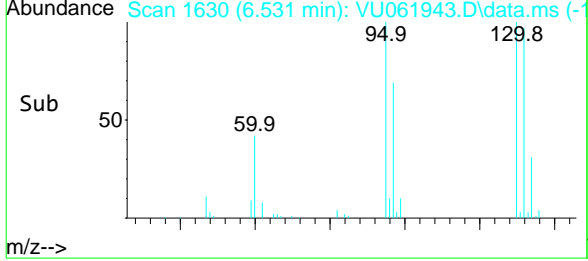
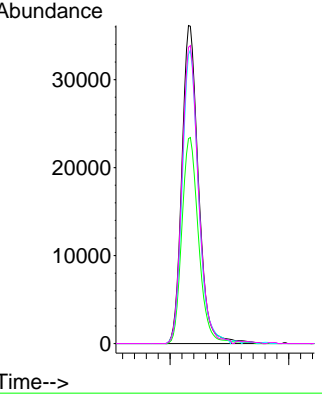
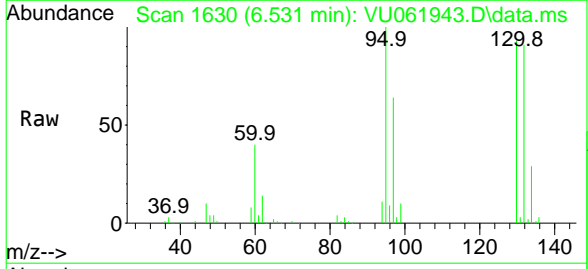
Instrument : MSVOA_U
 ClientSampleId : BG412

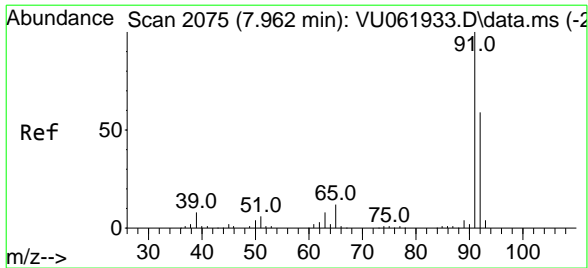
Tgt Ion	Resp	Lower	Upper
97	17177		
99	62.9	51.4	77.2
61	42.4	37.8	56.6



#34
 Trichloroethene
 Concen: 6.362 ug/L
 RT: 6.531 min Scan# 1630
 Delta R.T. -0.003 min
 Lab File: VU061943.D
 Acq: 22 Nov 2024 02:28

Tgt Ion	Resp	Lower	Upper
95	70332		
97	64.4	45.9	85.3
132	90.9	63.8	118.4
130	93.2	65.5	121.7

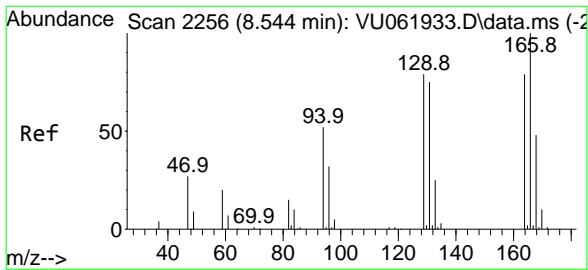
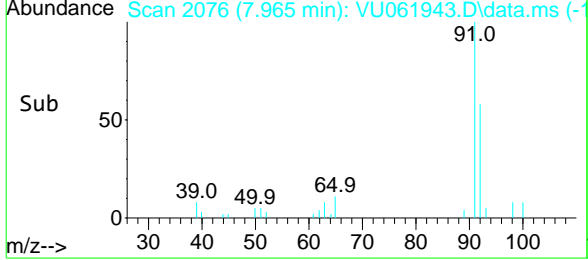
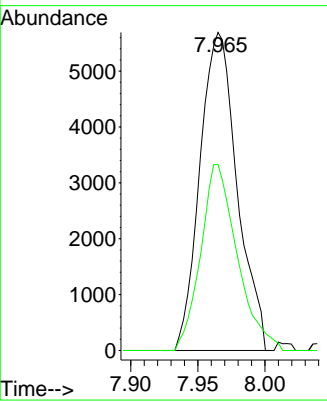
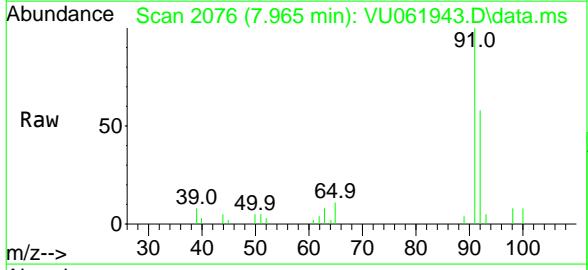




#42
Toluene
 Concen: 0.252 ug/L
 RT: 7.965 min Scan# 2076
 Delta R.T. 0.003 min
 Lab File: VU061943.D
 Acq: 22 Nov 2024 02:28

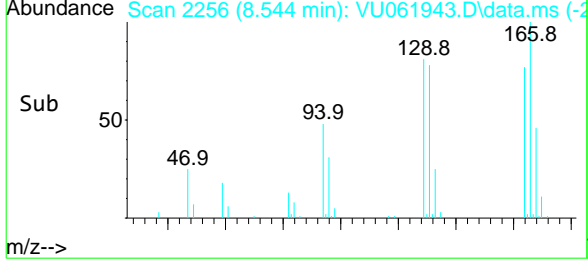
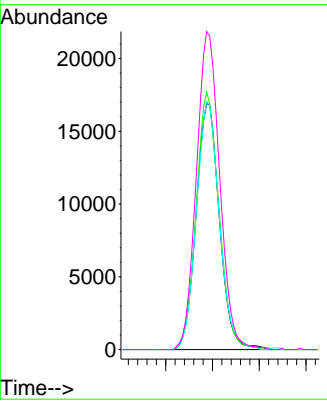
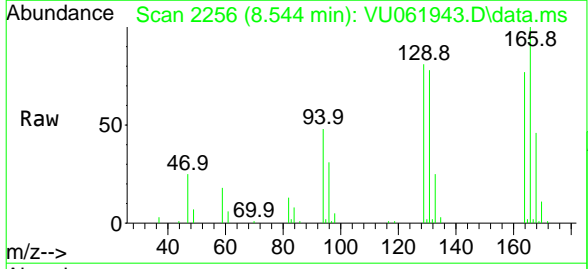
Instrument :
 MSVOA_U
ClientSampleId :
 BG412

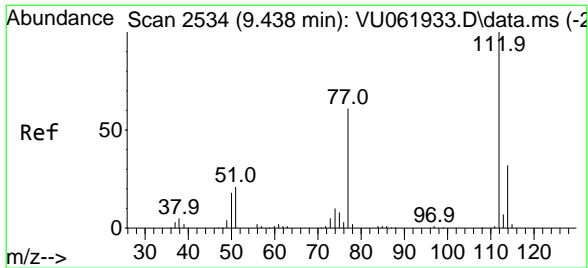
Tgt Ion: 91 Resp: 10970
 Ion Ratio Lower Upper
 91 100
 92 58.5 39.0 72.4



#47
Tetrachloroethene
 Concen: 3.636 ug/L
 RT: 8.544 min Scan# 2256
 Delta R.T. 0.000 min
 Lab File: VU061943.D
 Acq: 22 Nov 2024 02:28

Tgt Ion: 164 Resp: 29232
 Ion Ratio Lower Upper
 164 100
 129 104.6 73.2 136.0
 131 100.9 72.3 134.3
 166 129.3 90.2 167.4

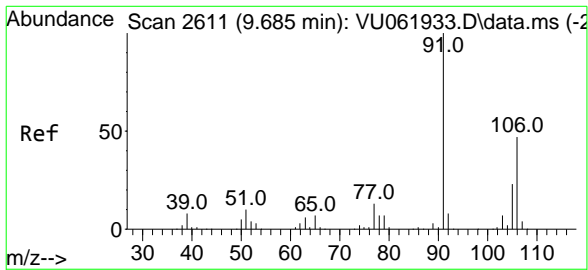
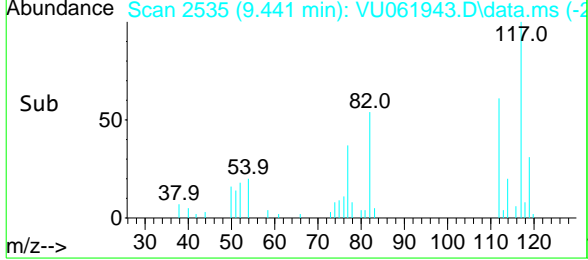
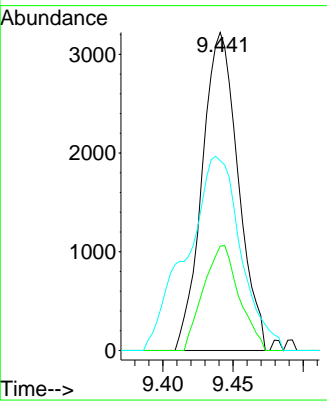
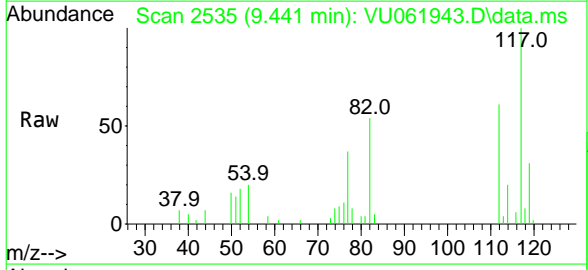




#51
 Chlorobenzene
 Concen: 0.193 ug/L
 RT: 9.441 min Scan# 25
 Delta R.T. 0.003 min
 Lab File: VU061943.D
 Acq: 22 Nov 2024 02:28

Instrument : MSVOA_U
 ClientSampleId : BG412

Tgt Ion	Resp	Lower	Upper
112	5748		
112	100		
114	32.8	23.0	42.6
77	59.7	50.5	75.7



#53
 m,p-Xylene
 Concen: 0.133 ug/L
 RT: 9.688 min Scan# 2612
 Delta R.T. 0.003 min
 Lab File: VU061943.D
 Acq: 22 Nov 2024 02:28

Tgt Ion	Resp	Lower	Upper
106	2438		
106	100		
91	231.0	147.6	274.0

