

Data Path : Z:\voasrv\HPCHEM1\MSVOA\_U\Data\VU112221\  
 Data File : VU045911.D  
 Acq On : 22 Nov 2021 14:09  
 Operator : SY/MD  
 Sample : M4759-01  
 Misc : 5.0mL/MSVOA\_U/WATER  
 ALS Vial : 8 Sample Multiplier: 1

Instrument :  
 MSVOA\_U  
 ClientSampleId :  
 SY-3-20211117

Quant Time: Nov 23 05:14:36 2021  
 Quant Method : Z:\voasrv\HPCHEM1\MSVOA\_U\Method\82U110521W.M  
 Quant Title : SW846 8260  
 QLast Update : Fri Nov 05 13:35:16 2021  
 Response via : Initial Calibration

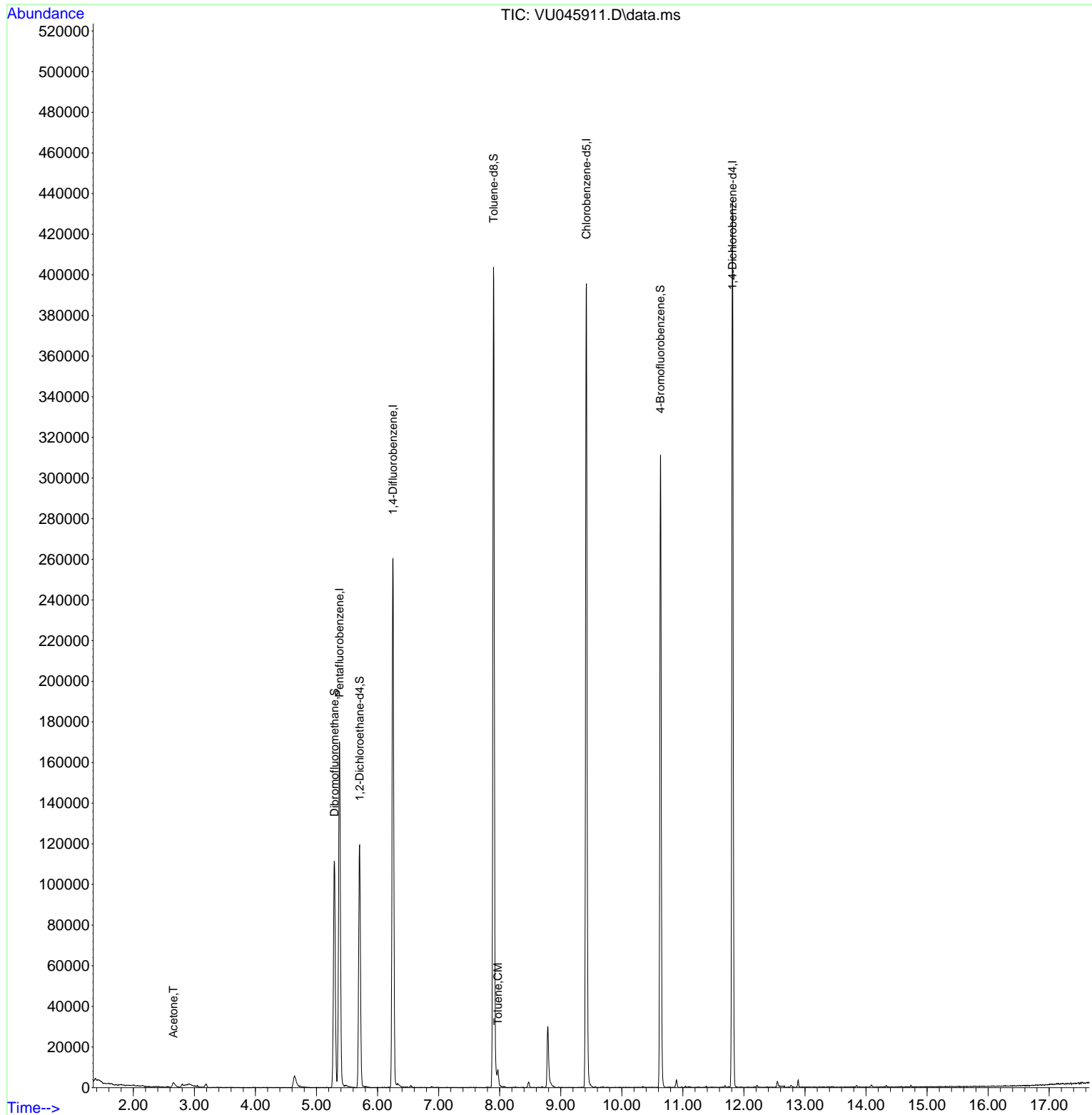
Compound	R.T.	QIon	Response	Conc	Units	Dev(Min)
-----						
Internal Standards						
1) Pentafluorobenzene	5.375	168	115479	50.000	ug/l	0.00
34) 1,4-Difluorobenzene	6.253	114	209683	50.000	ug/l	0.00
63) Chlorobenzene-d5	9.420	117	224141	50.000	ug/l	0.00
72) 1,4-Dichlorobenzene-d4	11.812	152	111625	50.000	ug/l	0.00
System Monitoring Compounds						
33) 1,2-Dichloroethane-d4	5.707	65	90500	52.329	ug/l	0.00
Spiked Amount	50.000	Range	78 - 117	Recovery	=	104.660%
35) Dibromofluoromethane	5.292	113	71775	51.270	ug/l	0.00
Spiked Amount	50.000	Range	75 - 124	Recovery	=	102.540%
50) Toluene-d8	7.899	98	275558	52.934	ug/l	0.00
Spiked Amount	50.000	Range	92 - 112	Recovery	=	105.860%
62) 4-Bromofluorobenzene	10.632	95	108016	51.745	ug/l	0.00
Spiked Amount	50.000	Range	83 - 123	Recovery	=	103.500%
Target Compounds						
						Qvalue
16) Acetone	2.658	43	5541	6.294	ug/l	100
52) Toluene	7.970	92	3128	0.844	ug/l	91
-----						

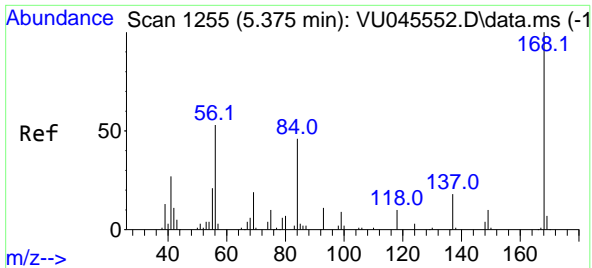
(#) = qualifier out of range (m) = manual integration (+) = signals summed

Data Path : Z:\voasrv\HPCHEM1\MSVOA\_U\Data\VU112221\  
 Data File : VU045911.D  
 Acq On : 22 Nov 2021 14:09  
 Operator : SY/MD  
 Sample : M4759-01  
 Misc : 5.0mL/MSVOA\_U/WATER  
 ALS Vial : 8 Sample Multiplier: 1

Instrument :  
 MSVOA\_U  
 ClientSampleId :  
 SY-3-2021117

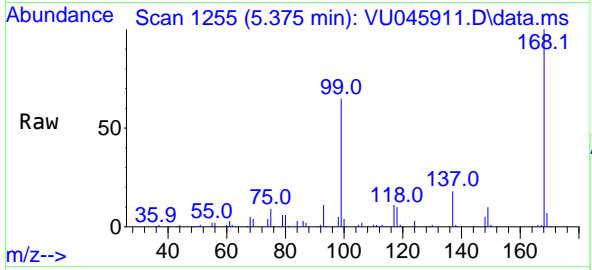
Quant Time: Nov 23 05:14:36 2021  
 Quant Method : Z:\voasrv\HPCHEM1\MSVOA\_U\Method\82U110521W.M  
 Quant Title : SW846 8260  
 QLast Update : Fri Nov 05 13:35:16 2021  
 Response via : Initial Calibration



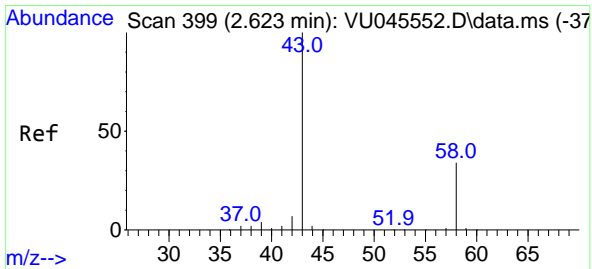
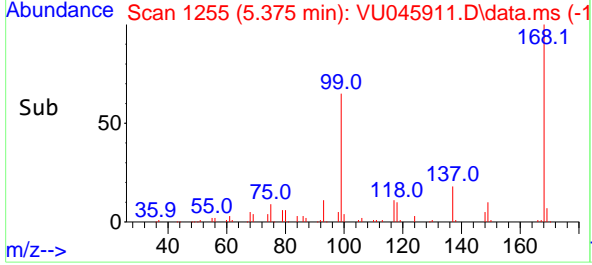
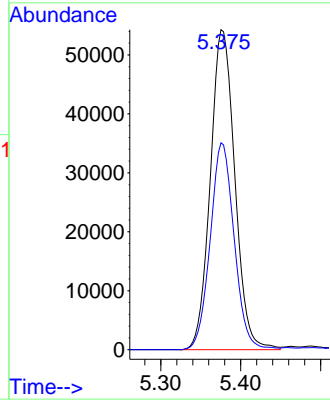


#1  
 Pentafluorobenzene  
 Concen: 50.000 ug/l  
 RT: 5.375 min Scan# 11  
 Delta R.T. 0.000 min  
 Lab File: VU045911.D  
 Acq: 22 Nov 2021 14:09

Instrument :  
 MSVOA\_U  
 ClientSampleId :  
 SY-3-20211117

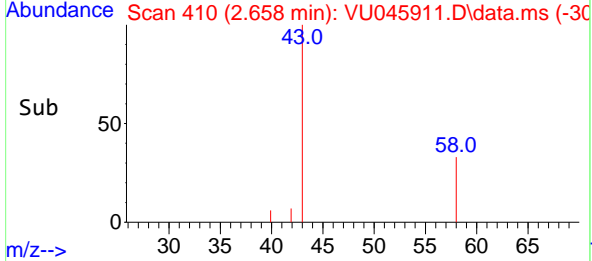
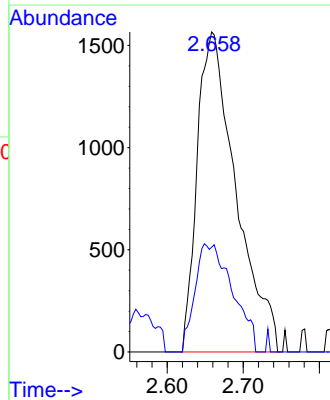
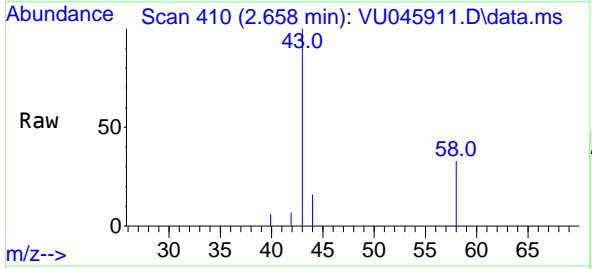


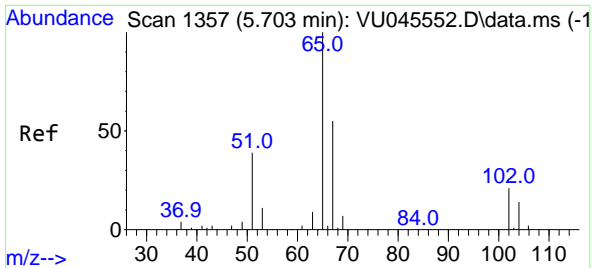
Tgt Ion:168 Resp: 115479  
 Ion Ratio Lower Upper  
 168 100  
 99 64.6 51.0 76.6



#16  
 Acetone  
 Concen: 6.294 ug/l  
 RT: 2.658 min Scan# 410  
 Delta R.T. 0.035 min  
 Lab File: VU045911.D  
 Acq: 22 Nov 2021 14:09

Tgt Ion: 43 Resp: 5541  
 Ion Ratio Lower Upper  
 43 100  
 58 32.8 26.2 39.2

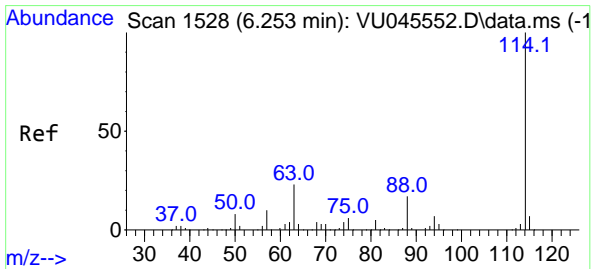
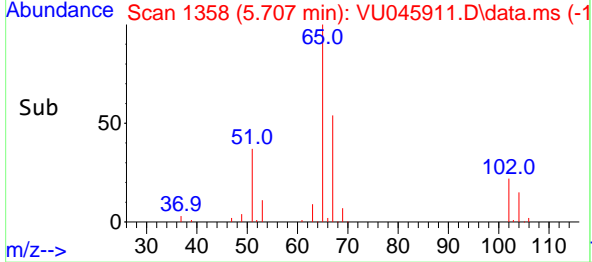
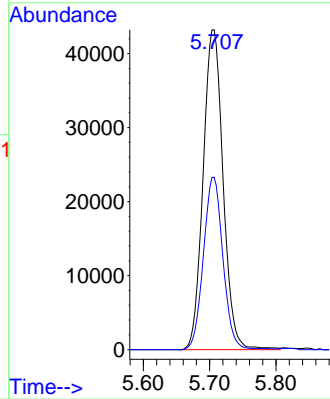
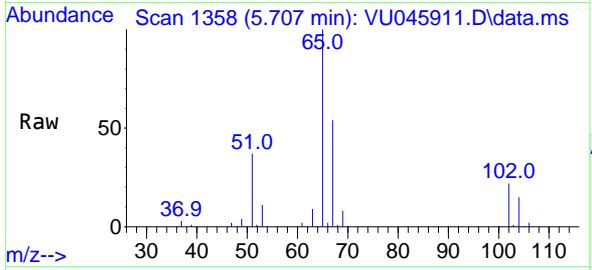




#33  
 1,2-Dichloroethane-d4  
 Concen: 52.329 ug/l  
 RT: 5.707 min Scan# 11  
 Delta R.T. 0.003 min  
 Lab File: VU045911.D  
 Acq: 22 Nov 2021 14:09

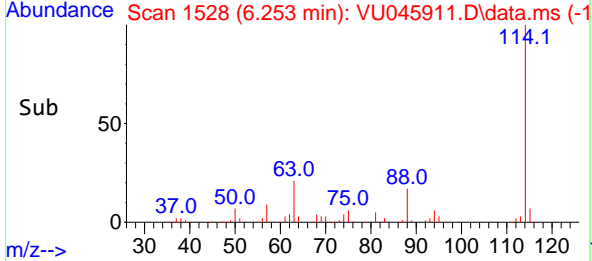
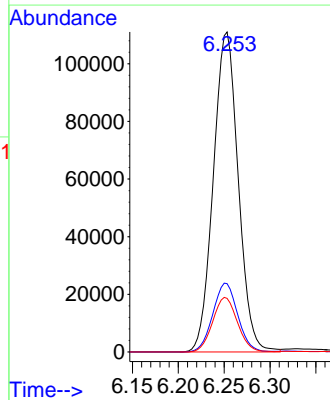
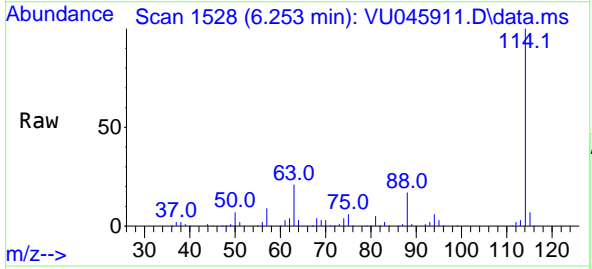
Instrument :  
 MSVOA\_U  
 ClientSampleId :  
 SY-3-20211117

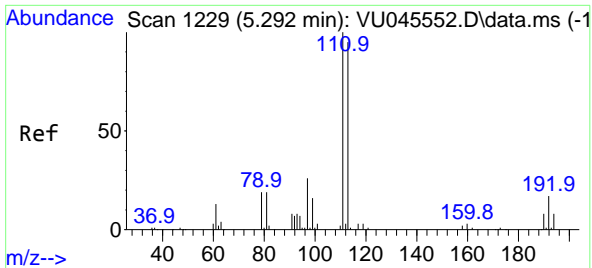
Tgt Ion: 65 Resp: 90500  
 Ion Ratio Lower Upper  
 65 100  
 67 52.4 0.0 105.8



#34  
 1,4-Difluorobenzene  
 Concen: 50.000 ug/l  
 RT: 6.253 min Scan# 1528  
 Delta R.T. 0.000 min  
 Lab File: VU045911.D  
 Acq: 22 Nov 2021 14:09

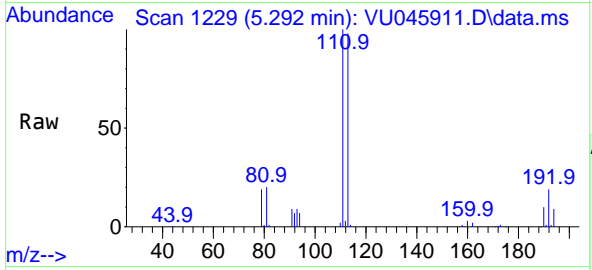
Tgt Ion: 114 Resp: 209683  
 Ion Ratio Lower Upper  
 114 100  
 63 21.4 0.0 45.6  
 88 16.7 0.0 33.8





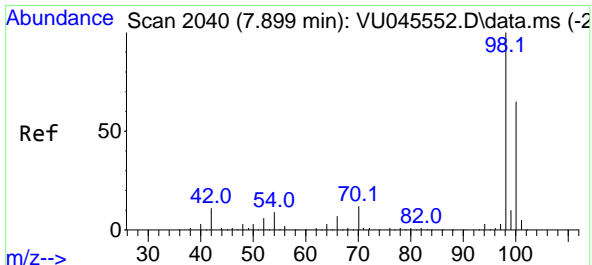
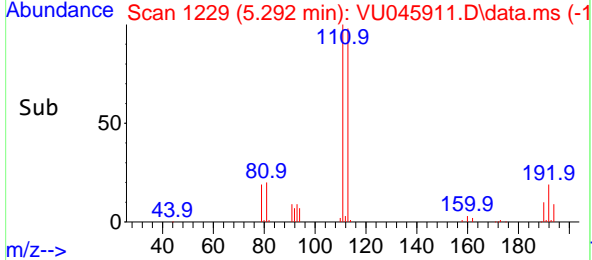
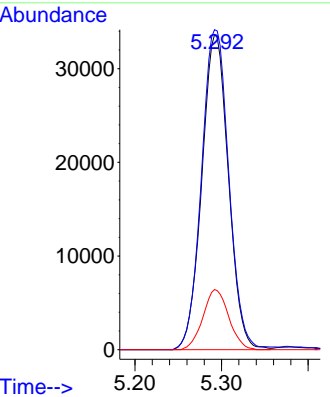
#35  
 Dibromofluoromethane  
 Concen: 51.270 ug/l  
 RT: 5.292 min Scan# 11  
 Delta R.T. 0.000 min  
 Lab File: VU045911.D  
 Acq: 22 Nov 2021 14:09

Instrument : MSVOA\_U  
 ClientSampleId : SY-3-20211117

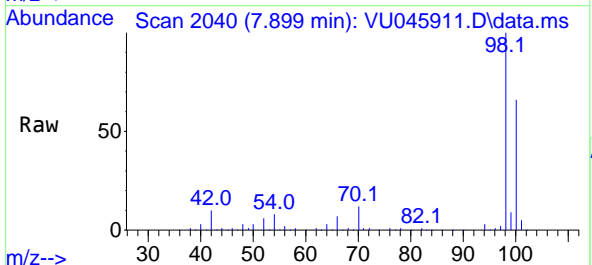


Tgt Ion: 113 Resp: 71775

Ion	Ratio	Lower	Upper
113	100		
111	104.5	82.8	124.2
192	18.5	14.8	22.2

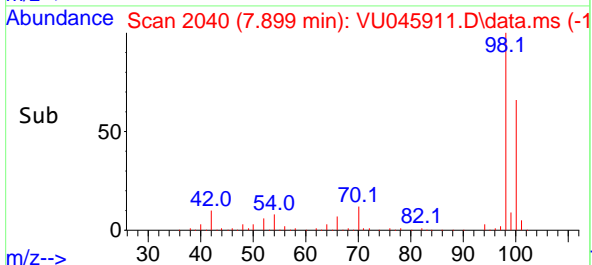
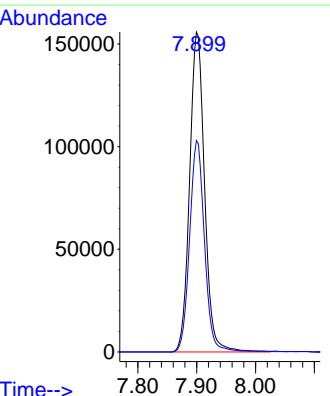


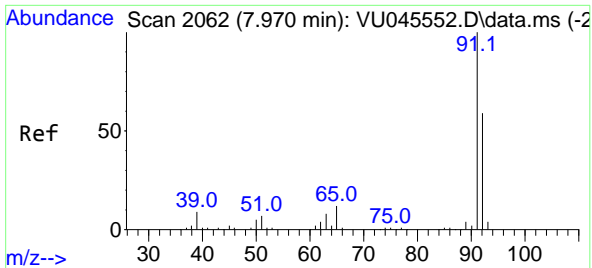
#50  
 Toluene-d8  
 Concen: 52.934 ug/l  
 RT: 7.899 min Scan# 2040  
 Delta R.T. 0.000 min  
 Lab File: VU045911.D  
 Acq: 22 Nov 2021 14:09



Tgt Ion: 98 Resp: 275558

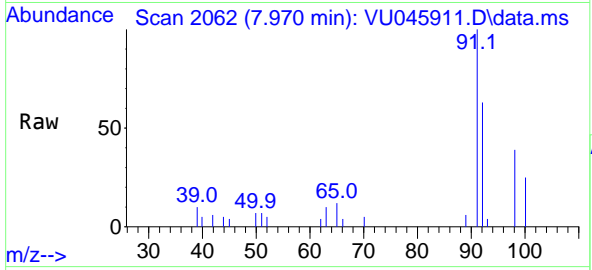
Ion	Ratio	Lower	Upper
98	100		
100	65.5	52.5	78.7



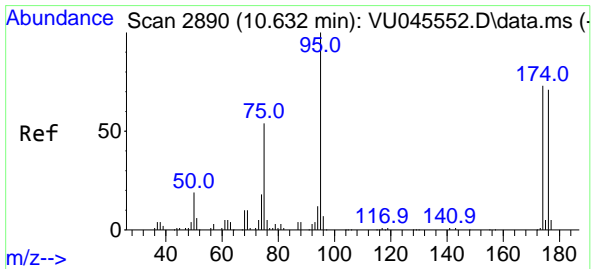
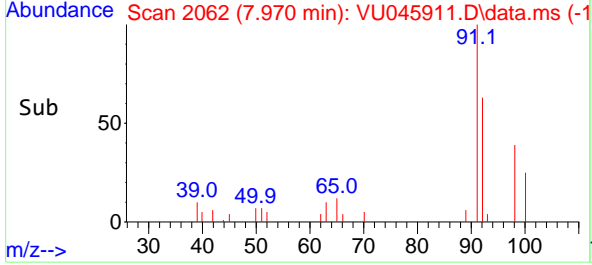
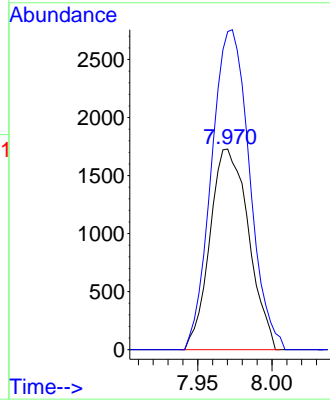


#52  
 Toluene  
 Concen: 0.844 ug/l  
 RT: 7.970 min Scan# 2062  
 Delta R.T. 0.000 min  
 Lab File: VU045911.D  
 Acq: 22 Nov 2021 14:09

Instrument : MSVOA\_U  
 ClientSampleId : SY-3-20211117

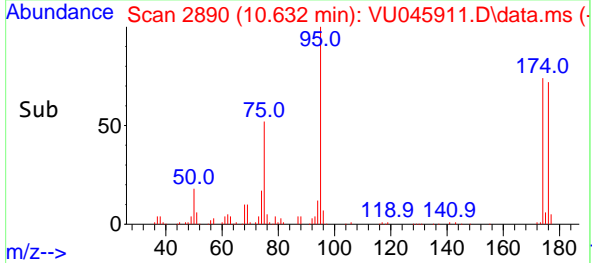
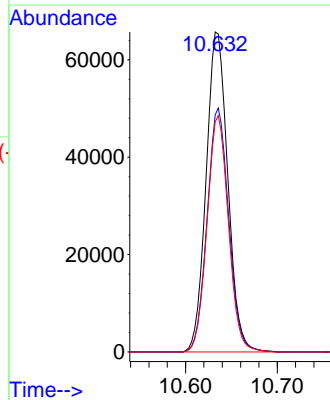
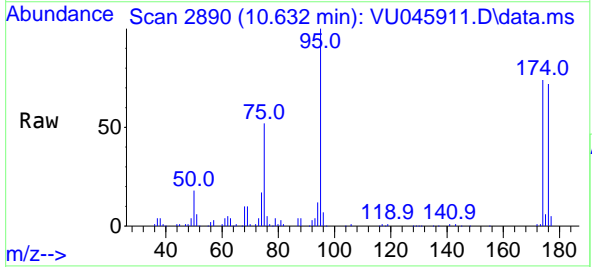


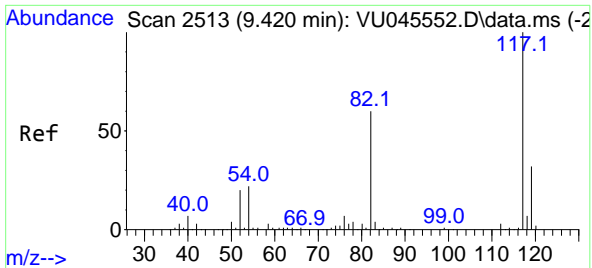
Tgt Ion: 92 Resp: 3128  
 Ion Ratio Lower Upper  
 92 100  
 91 156.9 135.6 203.4



#62  
 4-Bromofluorobenzene  
 Concen: 51.745 ug/l  
 RT: 10.632 min Scan# 2890  
 Delta R.T. 0.000 min  
 Lab File: VU045911.D  
 Acq: 22 Nov 2021 14:09

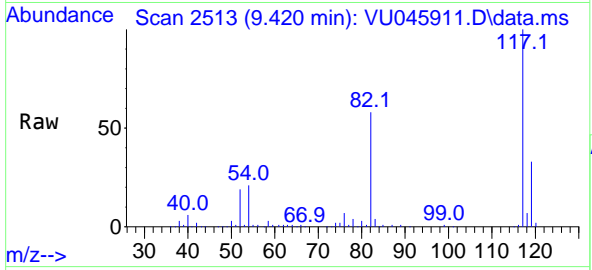
Tgt Ion: 95 Resp: 108016  
 Ion Ratio Lower Upper  
 95 100  
 174 76.3 0.0 141.8  
 176 72.5 0.0 138.2





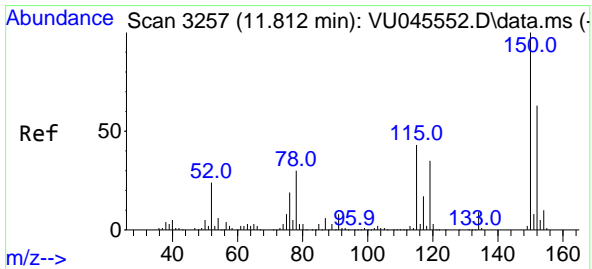
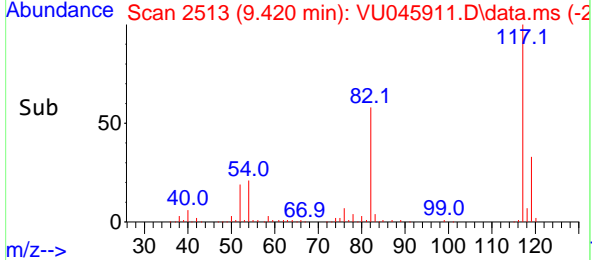
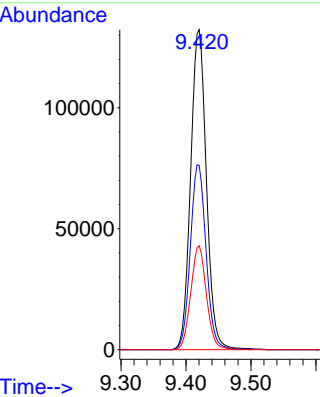
#63  
 Chlorobenzene-d5  
 Concen: 50.000 ug/l  
 RT: 9.420 min Scan# 2513  
 Delta R.T. 0.000 min  
 Lab File: VU045911.D  
 Acq: 22 Nov 2021 14:09

Instrument : MSVOA\_U  
 ClientSampleId : SY-3-20211117

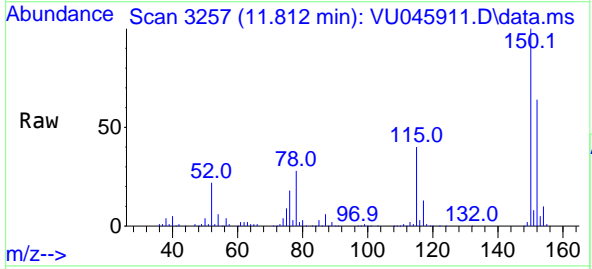


Tgt Ion:117 Resp: 224141

Ion	Ratio	Lower	Upper
117	100		
82	57.6	47.8	71.8
119	32.5	25.8	38.8



#72  
 1,4-Dichlorobenzene-d4  
 Concen: 50.000 ug/l  
 RT: 11.812 min Scan# 3257  
 Delta R.T. 0.000 min  
 Lab File: VU045911.D  
 Acq: 22 Nov 2021 14:09



Tgt Ion:152 Resp: 111625

Ion	Ratio	Lower	Upper
152	100		
115	61.8	42.7	128.1
150	156.7	0.0	346.8

