

Data Path : Z:\voasrv\HPCHEM1\MSVOA_U\Data\VU112221\
 Data File : VU045942.D
 Acq On : 23 Nov 2021 02:52
 Operator : SY/MD
 Sample : M4795-08
 Misc : 5.0mL/MSVOA_U/WATER
 ALS Vial : 42 Sample Multiplier: 1

Instrument :
 MSVOA_U
 ClientSampleId :
 HAR-25

Quant Time: Nov 23 06:52:04 2021
 Quant Method : Z:\voasrv\HPCHEM1\MSVOA_U\Method\82U110521W.M
 Quant Title : SW846 8260
 QLast Update : Fri Nov 05 13:35:16 2021
 Response via : Initial Calibration

Compound	R.T.	QIon	Response	Conc	Units	Dev(Min)

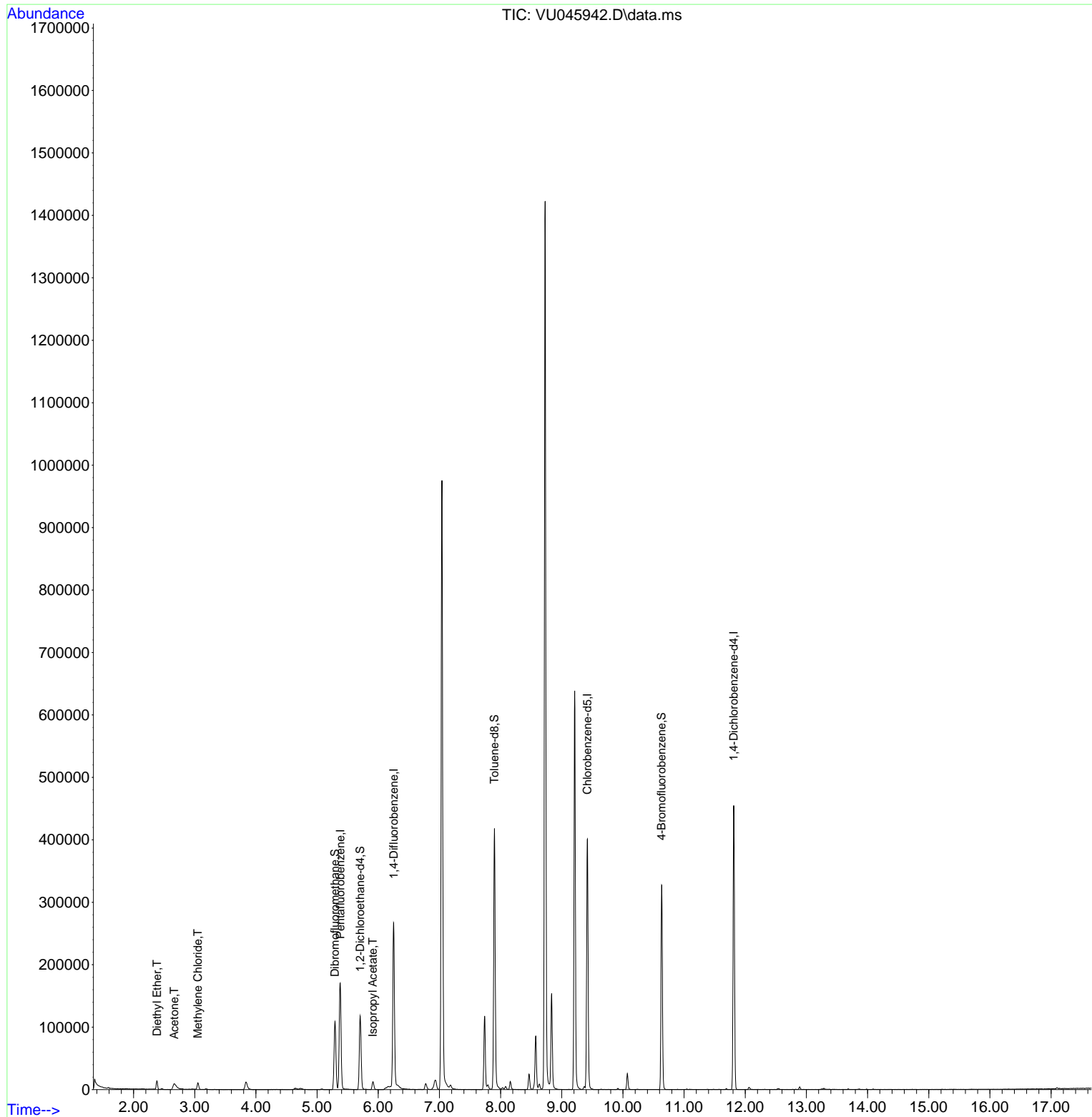
Internal Standards						
1) Pentafluorobenzene	5.378	168	116890	50.000	ug/l	0.00
34) 1,4-Difluorobenzene	6.253	114	213977	50.000	ug/l	0.00
63) Chlorobenzene-d5	9.420	117	228762	50.000	ug/l	0.00
72) 1,4-Dichlorobenzene-d4	11.812	152	118968	50.000	ug/l	0.00
System Monitoring Compounds						
33) 1,2-Dichloroethane-d4	5.703	65	88442	50.522	ug/l	0.00
Spiked Amount	50.000	Range	78 - 117	Recovery	=	101.040%
35) Dibromofluoromethane	5.292	113	70754	49.526	ug/l	0.00
Spiked Amount	50.000	Range	75 - 124	Recovery	=	99.060%
50) Toluene-d8	7.899	98	282980	53.269	ug/l	0.00
Spiked Amount	50.000	Range	92 - 112	Recovery	=	106.540%
62) 4-Bromofluorobenzene	10.632	95	112643	52.879	ug/l	0.00
Spiked Amount	50.000	Range	83 - 123	Recovery	=	105.760%
Target Compounds						
						Qvalue
8) Diethyl Ether	2.382	74	5003	5.658	ug/l	100
16) Acetone	2.665	43	27318	30.656	ug/l	98
20) Methylene Chloride	3.050	84	5215	3.368	ug/l	92
43) Isopropyl Acetate	5.912	43	13790	3.762	ug/l	99

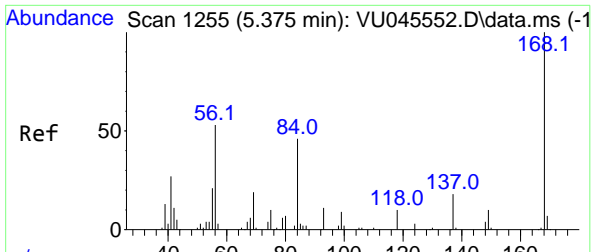
(#) = qualifier out of range (m) = manual integration (+) = signals summed

Data Path : Z:\voasrv\HPCHEM1\MSVOA_U\Data\VU112221\
 Data File : VU045942.D
 Acq On : 23 Nov 2021 02:52
 Operator : SY/MD
 Sample : M4795-08
 Misc : 5.0mL/MSVOA_U/WATER
 ALS Vial : 42 Sample Multiplier: 1

Instrument :
 MSVOA_U
 ClientSampleId :
 HAR-25

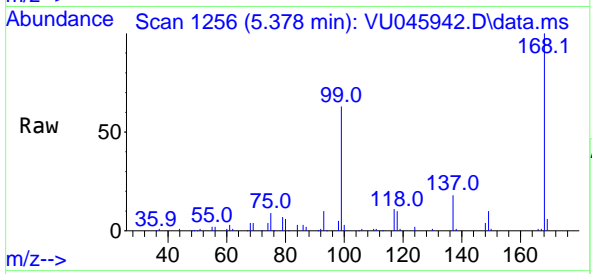
Quant Time: Nov 23 06:52:04 2021
 Quant Method : Z:\voasrv\HPCHEM1\MSVOA_U\Method\82U110521W.M
 Quant Title : SW846 8260
 QLast Update : Fri Nov 05 13:35:16 2021
 Response via : Initial Calibration



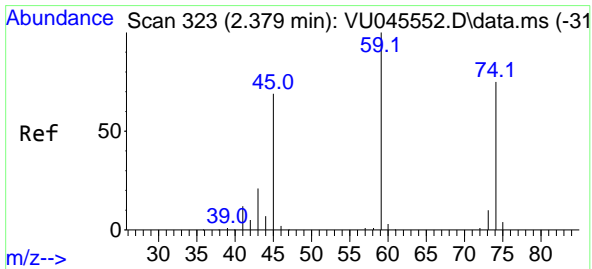
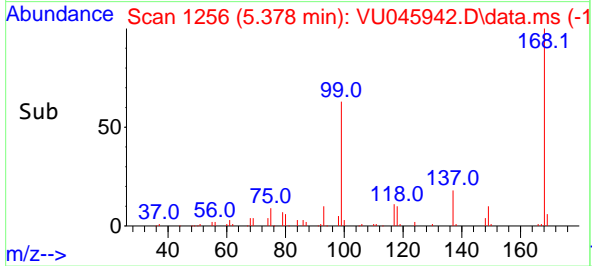
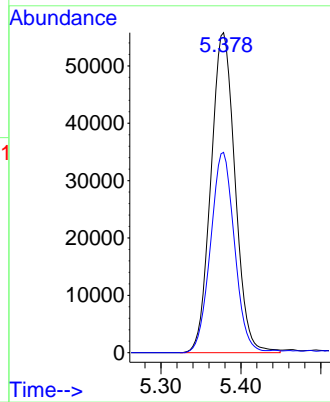


#1
 Pentafluorobenzene
 Concen: 50.000 ug/l
 RT: 5.378 min Scan# 11
 Delta R.T. 0.003 min
 Lab File: VU045942.D
 Acq: 23 Nov 2021 02:52

Instrument :
 MSVOA_U
 ClientSampleId :
 HAR-25

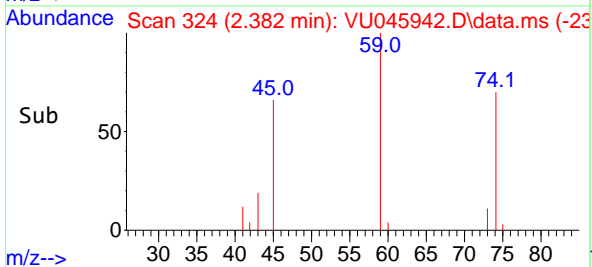
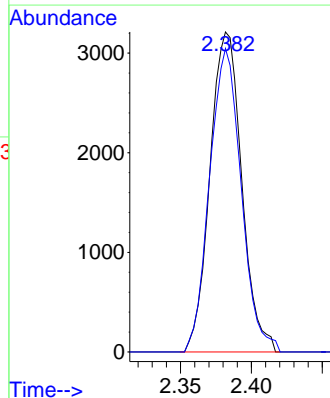
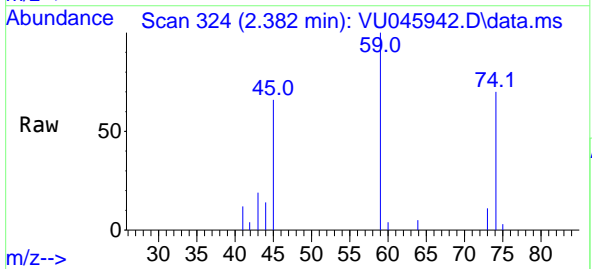


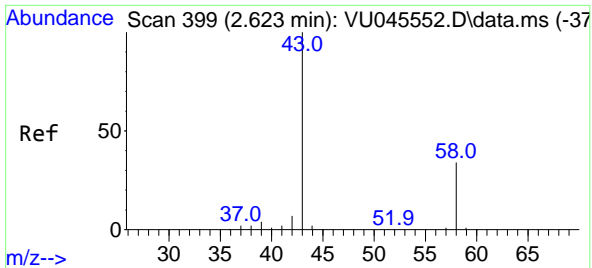
Tgt Ion:168 Resp: 116890
 Ion Ratio Lower Upper
 168 100
 99 62.6 51.0 76.6



#8
 Diethyl Ether
 Concen: 5.658 ug/l
 RT: 2.382 min Scan# 324
 Delta R.T. 0.003 min
 Lab File: VU045942.D
 Acq: 23 Nov 2021 02:52

Tgt Ion: 74 Resp: 5003
 Ion Ratio Lower Upper
 74 100
 45 94.5 47.3 141.8



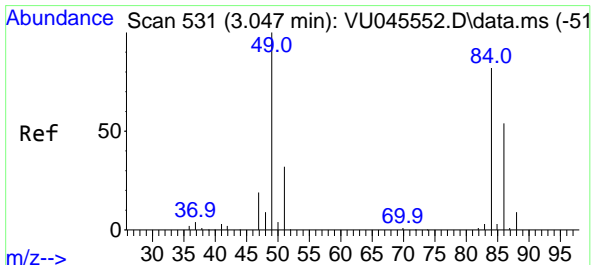
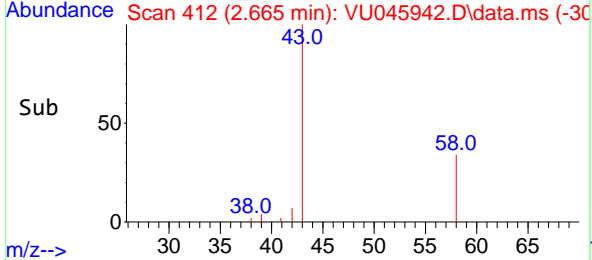
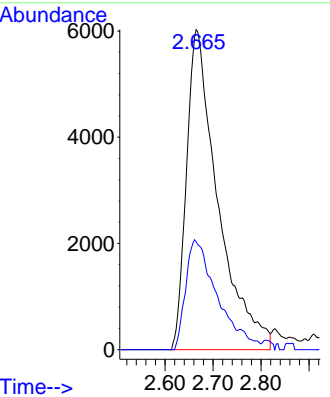
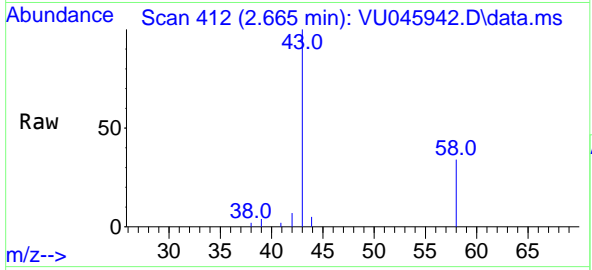


#16
 Acetone
 Concen: 30.656 ug/l
 RT: 2.665 min Scan# 412
 Delta R.T. 0.042 min
 Lab File: VU045942.D
 Acq: 23 Nov 2021 02:52

Instrument : MSVOA_U
 ClientSampleId : HAR-25

Tgt Ion: 43 Resp: 27318

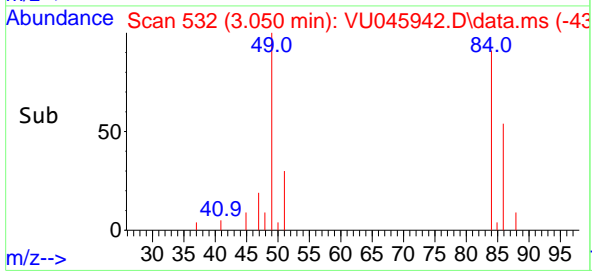
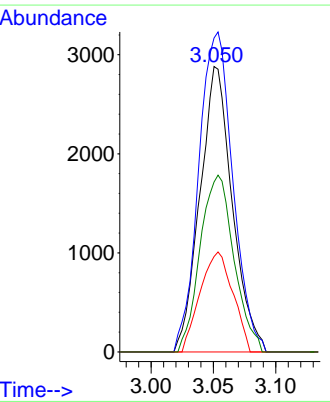
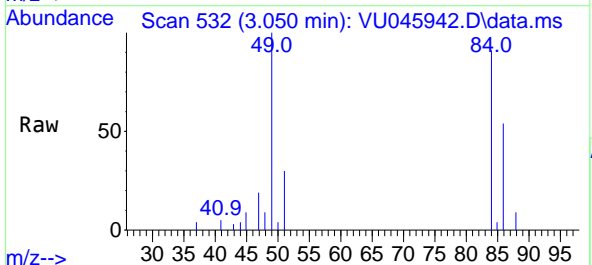
Ion	Ratio	Lower	Upper
43	100		
58	33.7	26.2	39.2

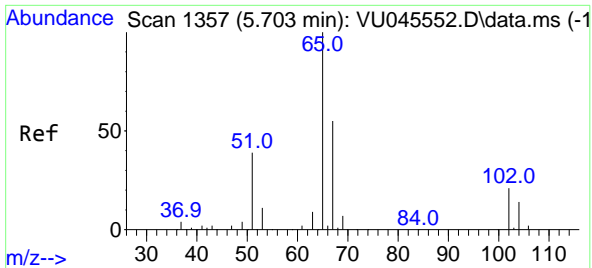


#20
 Methylene Chloride
 Concen: 3.368 ug/l
 RT: 3.050 min Scan# 532
 Delta R.T. 0.003 min
 Lab File: VU045942.D
 Acq: 23 Nov 2021 02:52

Tgt Ion: 84 Resp: 5215

Ion	Ratio	Lower	Upper
84	100		
49	109.9	96.4	144.6
51	33.4	30.5	45.7
86	59.5	50.3	75.5

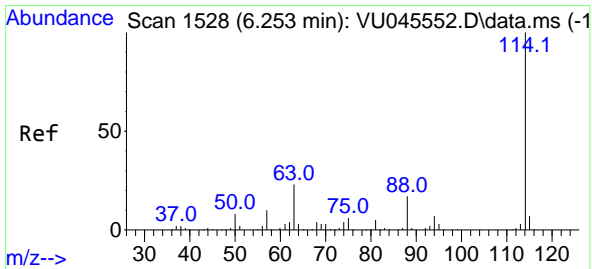
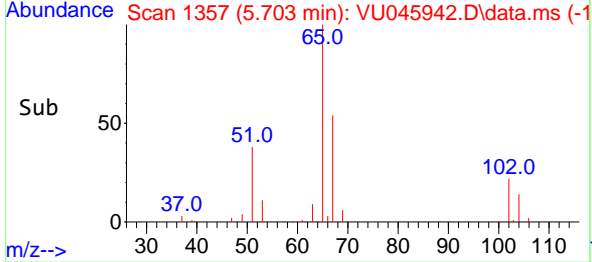
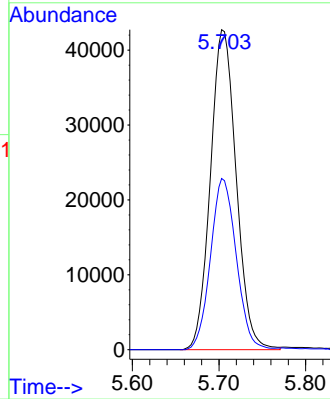
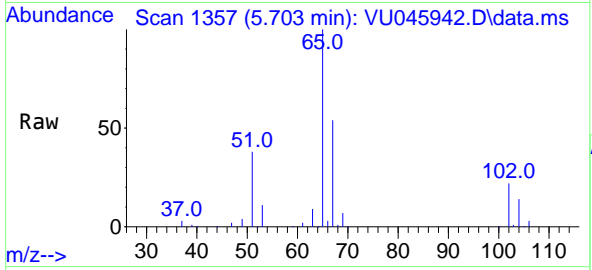




#33
 1,2-Dichloroethane-d4
 Concen: 50.522 ug/l
 RT: 5.703 min Scan# 1
 Delta R.T. -0.000 min
 Lab File: VU045942.D
 Acq: 23 Nov 2021 02:52

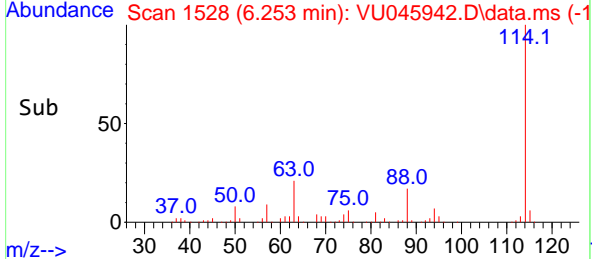
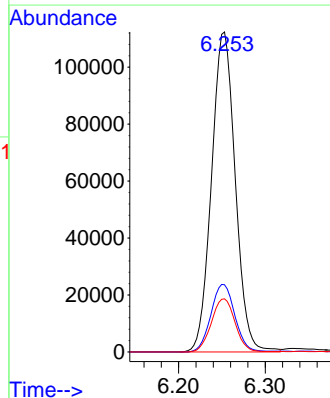
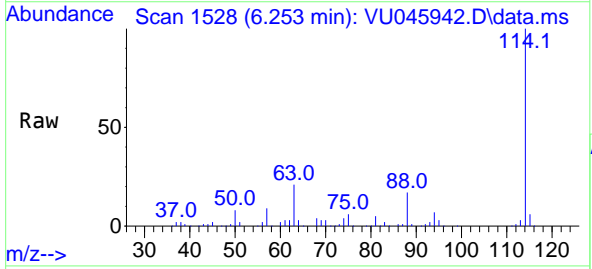
Instrument :
 MSVOA_U
 ClientSampleId :
 HAR-25

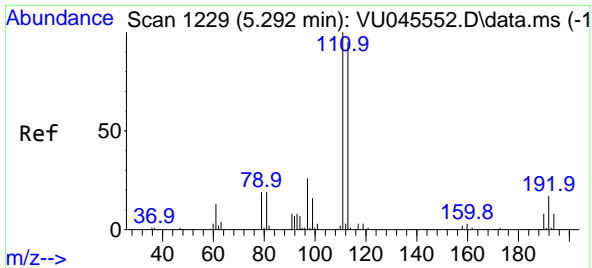
Tgt Ion: 65 Resp: 88442
 Ion Ratio Lower Upper
 65 100
 67 53.4 0.0 105.8



#34
 1,4-Difluorobenzene
 Concen: 50.000 ug/l
 RT: 6.253 min Scan# 1528
 Delta R.T. -0.000 min
 Lab File: VU045942.D
 Acq: 23 Nov 2021 02:52

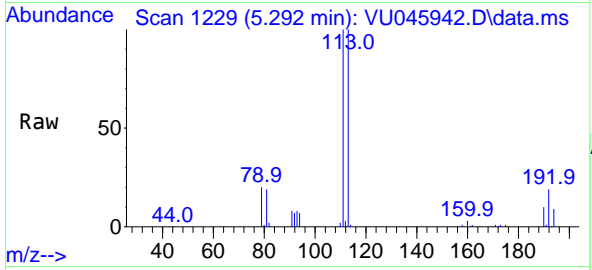
Tgt Ion: 114 Resp: 213977
 Ion Ratio Lower Upper
 114 100
 63 21.0 0.0 45.6
 88 16.6 0.0 33.8





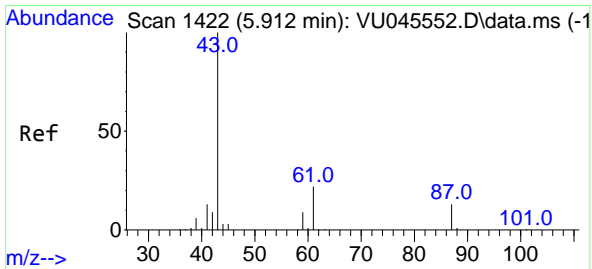
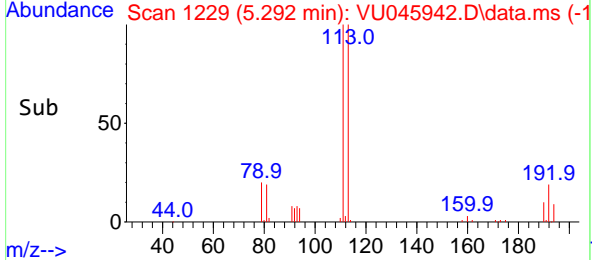
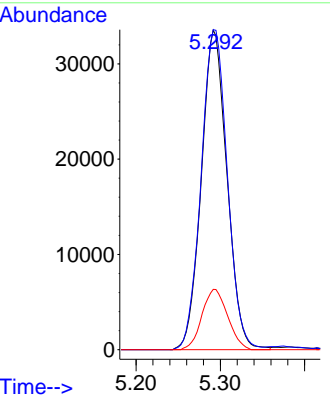
#35
 Dibromofluoromethane
 Concen: 49.526 ug/l
 RT: 5.292 min Scan# 1111
 Delta R.T. -0.000 min
 Lab File: VU045942.D
 Acq: 23 Nov 2021 02:52

Instrument : MSVOA_U
 ClientSampleId : HAR-25

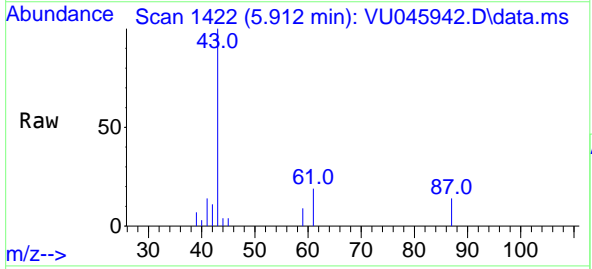


Tgt Ion: 113 Resp: 70754

Ion	Ratio	Lower	Upper
113	100		
111	102.4	82.8	124.2
192	18.9	14.8	22.2

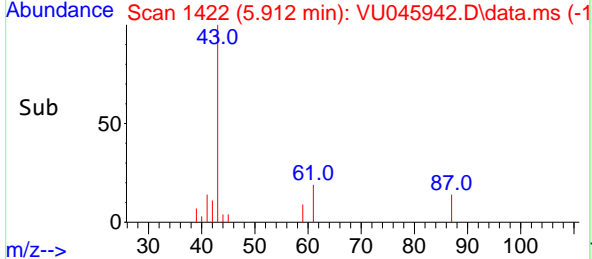
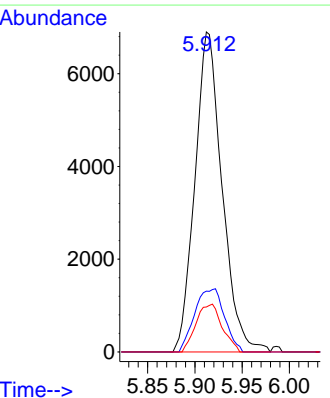


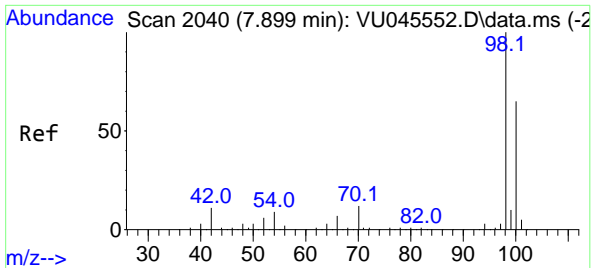
#43
 Isopropyl Acetate
 Concen: 3.762 ug/l
 RT: 5.912 min Scan# 1422
 Delta R.T. -0.000 min
 Lab File: VU045942.D
 Acq: 23 Nov 2021 02:52



Tgt Ion: 43 Resp: 13790

Ion	Ratio	Lower	Upper
43	100		
61	21.6	16.9	25.3
87	14.4	11.0	16.4

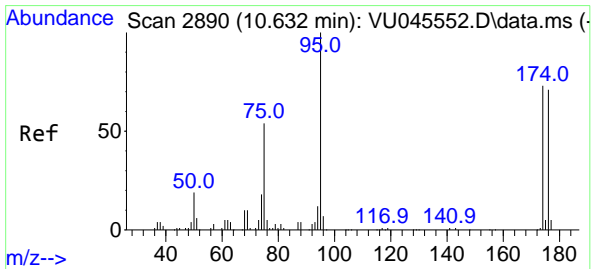
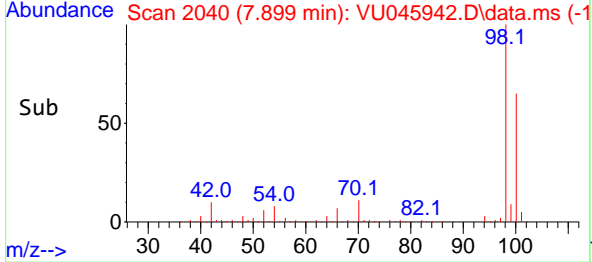
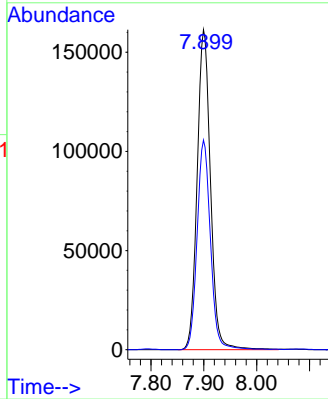
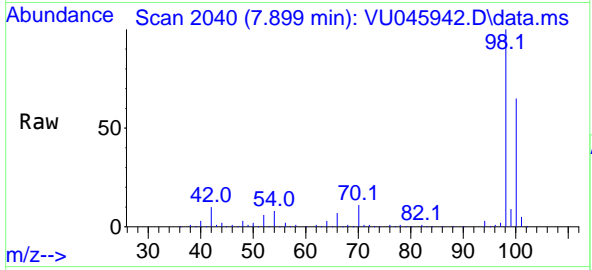




#50
 Toluene-d8
 Concen: 53.269 ug/l
 RT: 7.899 min Scan# 2040
 Delta R.T. -0.000 min
 Lab File: VU045942.D
 Acq: 23 Nov 2021 02:52

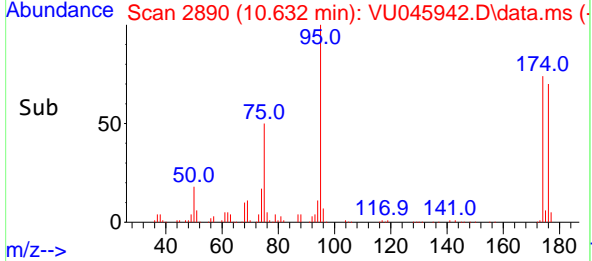
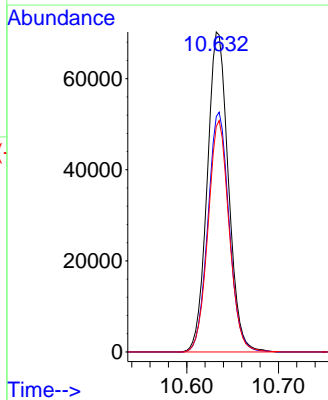
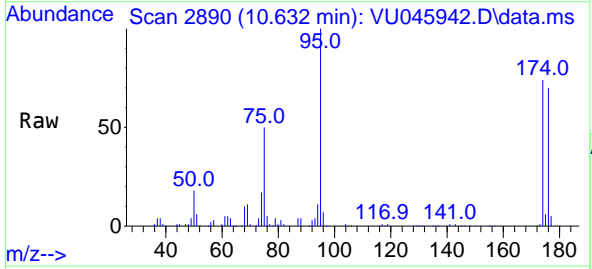
Instrument : MSVOA_U
 ClientSampleId : HAR-25

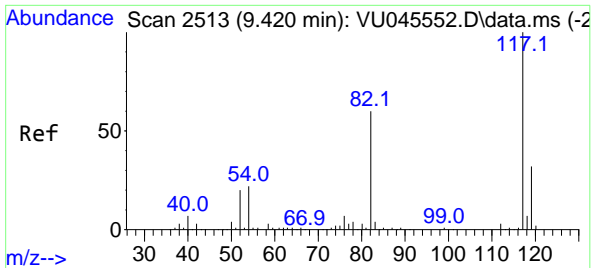
Tgt Ion: 98 Resp: 282980
 Ion Ratio Lower Upper
 98 100
 100 65.4 52.5 78.7



#62
 4-Bromofluorobenzene
 Concen: 52.879 ug/l
 RT: 10.632 min Scan# 2890
 Delta R.T. -0.000 min
 Lab File: VU045942.D
 Acq: 23 Nov 2021 02:52

Tgt Ion: 95 Resp: 112643
 Ion Ratio Lower Upper
 95 100
 174 75.4 0.0 141.8
 176 72.1 0.0 138.2



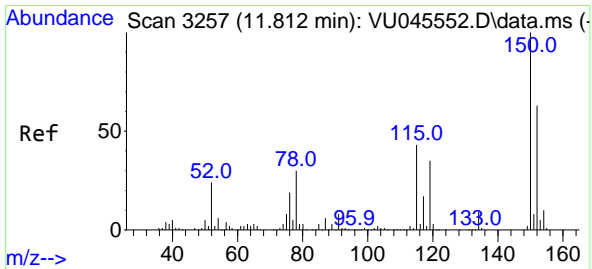
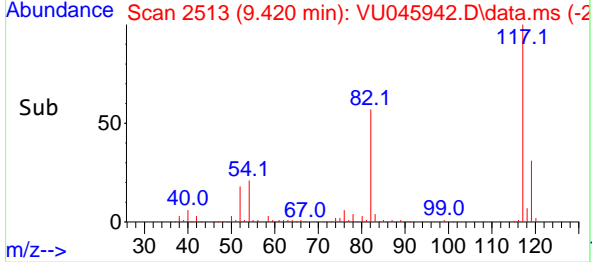
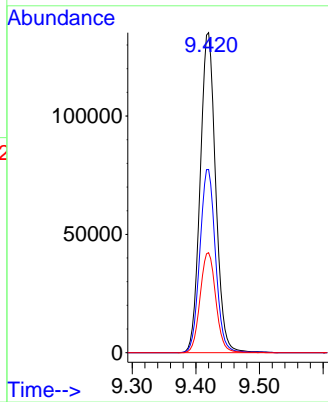
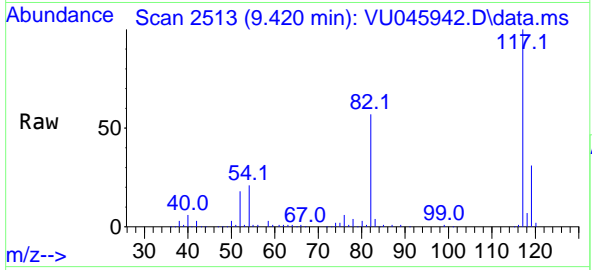


#63
 Chlorobenzene-d5
 Concen: 50.000 ug/l
 RT: 9.420 min Scan# 2513
 Delta R.T. -0.000 min
 Lab File: VU045942.D
 Acq: 23 Nov 2021 02:52

Instrument : MSVOA_U
 ClientSampleId : HAR-25

Tgt Ion:117 Resp: 228762

Ion	Ratio	Lower	Upper
117	100		
82	57.3	47.8	71.8
119	31.2	25.8	38.8



#72
 1,4-Dichlorobenzene-d4
 Concen: 50.000 ug/l
 RT: 11.812 min Scan# 3257
 Delta R.T. -0.000 min
 Lab File: VU045942.D
 Acq: 23 Nov 2021 02:52

Tgt Ion:152 Resp: 118968

Ion	Ratio	Lower	Upper
152	100		
115	61.7	42.7	128.1
150	155.0	0.0	346.8

