

Data Path : Z:\voasrv\HPCHEM1\MSVOA\_U\Data\VU112223\  
 Data File : VU056581.D  
 Acq On : 22 Nov 2023 12:09  
 Operator : MD/SY  
 Sample : 05476-14  
 Misc : 25mL/MSVOA\_U/WATER  
 ALS Vial : 7 Sample Multiplier: 1

Instrument :  
 MSVOA\_U  
 ClientSampleId :

Quant Time: Nov 23 03:41:49 2023  
 Quant Method : Z:\voasrv\HPCHEM1\MSVOA\_U\Method\SFAMUTR111323WMA.M  
 Quant Title : TRACE VOA SFAM1.0  
 QLast Update : Wed Nov 22 00:29:26 2023  
 Response via : Initial Calibration

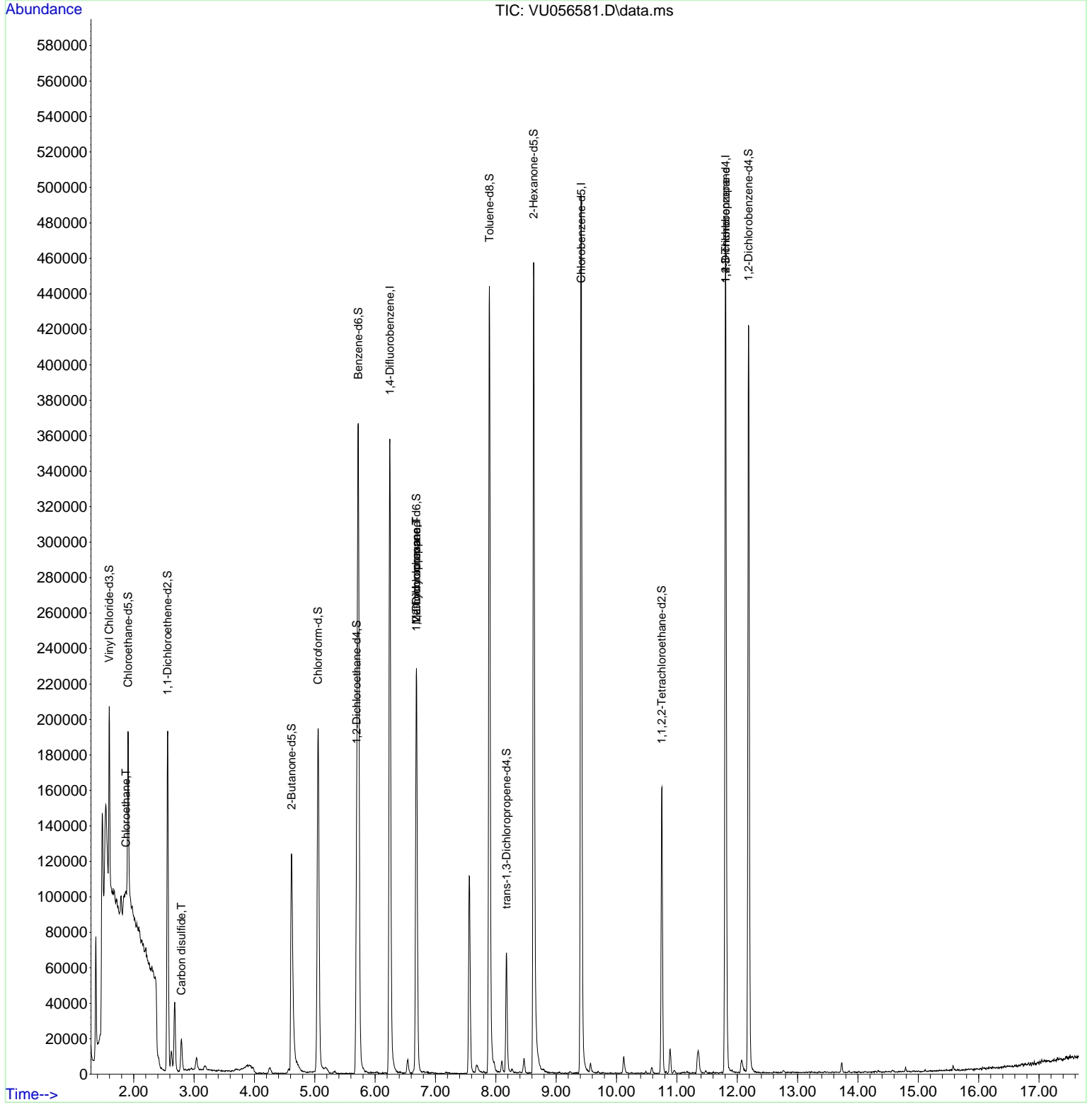
Compound	R.T.	QIon	Response	Conc	Units	Dev(Min)
Internal Standards						
1) 1,4-Difluorobenzene	6.245	114	298470	5.000	ug/L	0.00
28) Chlorobenzene-d5	9.415	117	288359	5.000	ug/L	0.00
58) 1,4-Dichlorobenzene-d4	11.807	152	128031	5.000	ug/L	0.00
System Monitoring Compounds						
4) Vinyl Chloride-d3	1.596	65	74772	3.349	ug/L	0.00
Spiked Amount	5.000	Range 40 - 130	Recovery	=	67.000%	
7) Chloroethane-d5	1.907	69	70134	4.097	ug/L	0.00
Spiked Amount	5.000	Range 65 - 130	Recovery	=	82.000%	
11) 1,1-Dichloroethene-d2	2.560	65	36937	3.749	ug/L	0.00
Spiked Amount	5.000	Range 60 - 125	Recovery	=	75.000%	
20) 2-Butanone-d5	4.615	46	188827	42.418	ug/L	0.00
Spiked Amount	50.000	Range 40 - 130	Recovery	=	84.840%	
24) Chloroform-d	5.055	84	185419	4.294	ug/L	0.00
Spiked Amount	5.000	Range 70 - 125	Recovery	=	85.800%	
26) 1,2-Dichloroethane-d4	5.695	65	91274	4.574	ug/L	0.00
Spiked Amount	5.000	Range 70 - 130	Recovery	=	91.400%	
32) Benzene-d6	5.721	84	353845	4.119	ug/L	0.00
Spiked Amount	5.000	Range 70 - 125	Recovery	=	82.400%	
36) 1,2-Dichloropropane-d6	6.685	67	112821	4.357	ug/L	0.00
Spiked Amount	5.000	Range 60 - 140	Recovery	=	87.200%	
41) Toluene-d8	7.894	98	311043	4.100	ug/L	0.00
Spiked Amount	5.000	Range 70 - 130	Recovery	=	82.000%	
43) trans-1,3-Dichloroprop...	8.177	79	40328	4.061	ug/L	0.00
Spiked Amount	5.000	Range 55 - 130	Recovery	=	81.200%	
46) 2-Hexanone-d5	8.627	63	155122	39.749	ug/L	0.00
Spiked Amount	50.000	Range 45 - 130	Recovery	=	79.500%	
56) 1,1,2,2-Tetrachloroeth...	10.750	84	78085	4.220	ug/L	0.00
Spiked Amount	5.000	Range 65 - 120	Recovery	=	84.400%	
66) 1,2-Dichlorobenzene-d4	12.187	152	111739	4.724	ug/L	0.00
Spiked Amount	5.000	Range 80 - 120	Recovery	=	94.400%	
Target Compounds						
8) Chloroethane	1.872	64	50371	3.541	ug/L #	49
14) Carbon disulfide	2.792	76	25496	0.429	ug/L	99
35) Methylcyclohexane	6.685	83	24997	0.772	ug/L #	18
37) 1,2-Dichloropropane	6.682	63	12496	0.582	ug/L #	88
61) 1,2,3-Trichloropropane	11.807	75	16550	1.507	ug/L #	68

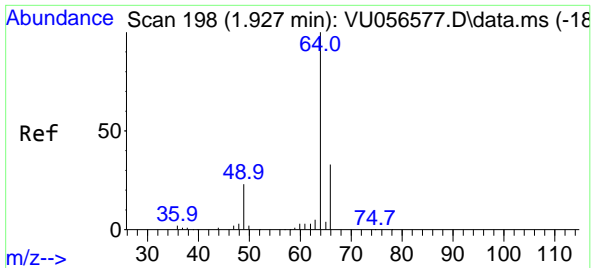
(#) = qualifier out of range (m) = manual integration (+) = signals summed

Data Path : Z:\voasrv\HPCHEM1\MSVOA\_U\Data\VU112223\  
 Data File : VU056581.D  
 Acq On : 22 Nov 2023 12:09  
 Operator : MD/SY  
 Sample : 05476-14  
 Misc : 25mL/MSVOA\_U/WATER  
 ALS Vial : 7 Sample Multiplier: 1

Instrument :  
 MSVOA\_U  
 ClientSampleId :

Quant Time: Nov 23 03:41:49 2023  
 Quant Method : Z:\voasrv\HPCHEM1\MSVOA\_U\Method\SFAMUTR111323WMA.M  
 Quant Title : TRACE VOA SFAM1.0  
 QLast Update : Wed Nov 22 00:29:26 2023  
 Response via : Initial Calibration

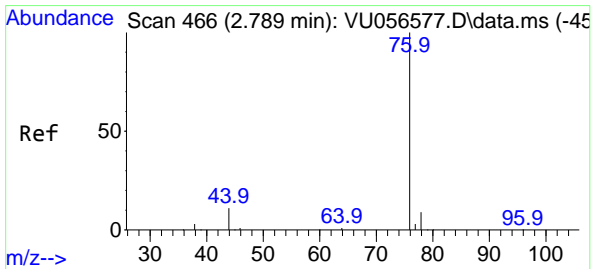
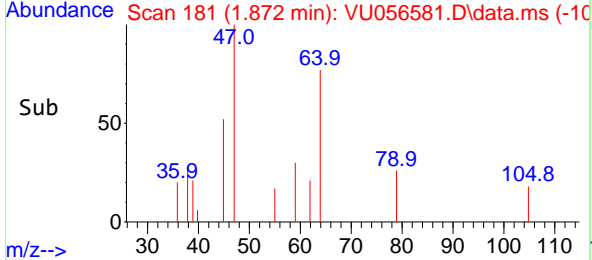
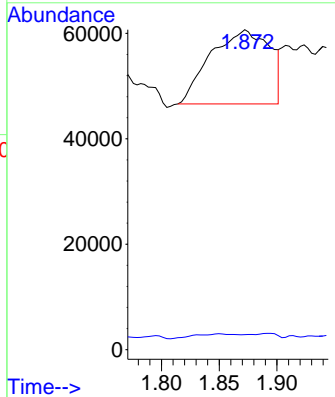
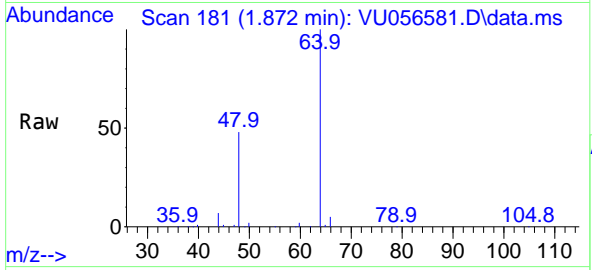




#8  
 Chloroethane  
 Concen: 3.541 ug/L  
 RT: 1.872 min Scan# 11  
 Delta R.T. -0.058 min  
 Lab File: VU056581.D  
 Acq: 22 Nov 2023 12:09

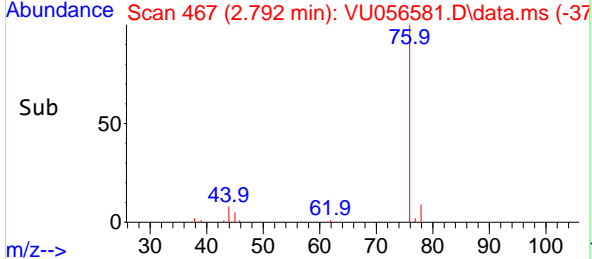
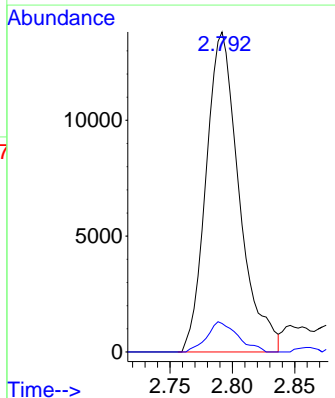
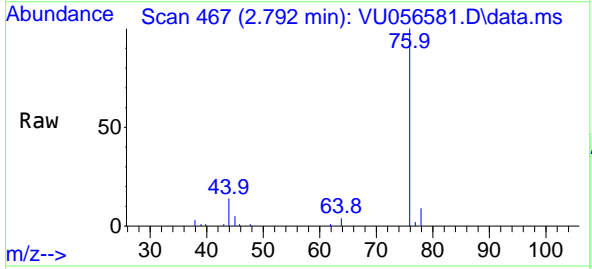
Instrument : MSVOA\_U  
 ClientSampleId :

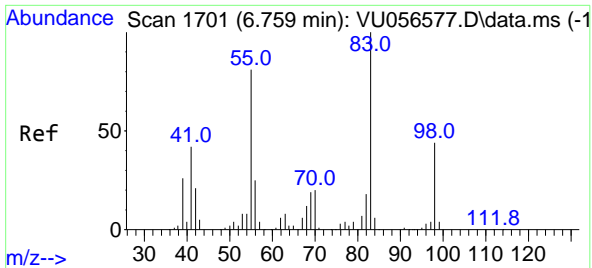
Tgt Ion: 64 Resp: 50371  
 Ion Ratio Lower Upper  
 64 100  
 66 4.7 23.9 44.5#



#14  
 Carbon disulfide  
 Concen: 0.429 ug/L  
 RT: 2.792 min Scan# 467  
 Delta R.T. 0.003 min  
 Lab File: VU056581.D  
 Acq: 22 Nov 2023 12:09

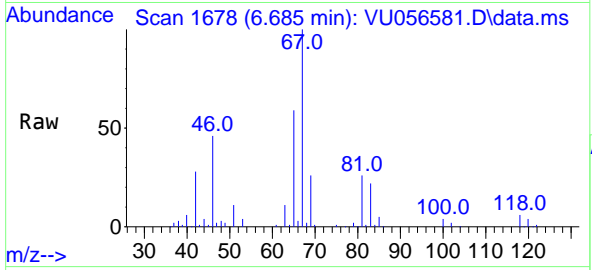
Tgt Ion: 76 Resp: 25496  
 Ion Ratio Lower Upper  
 76 100  
 78 8.9 6.8 10.2



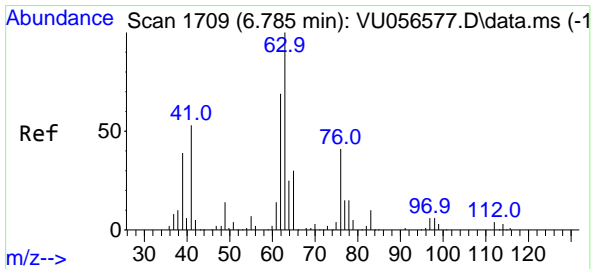
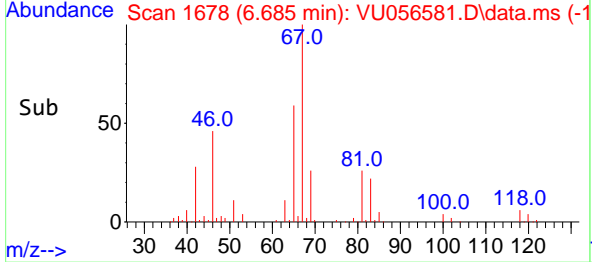
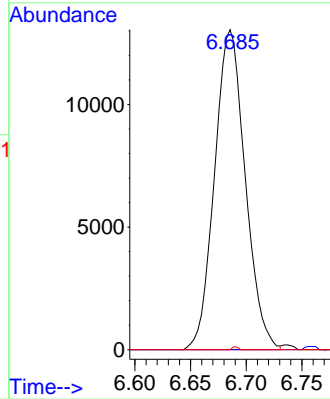


#35  
 Methylcyclohexane  
 Concen: 0.772 ug/L  
 RT: 6.685 min Scan# 1677  
 Delta R.T. -0.071 min  
 Lab File: VU056581.D  
 Acq: 22 Nov 2023 12:09

Instrument : MSVOA\_U  
 ClientSampleId :

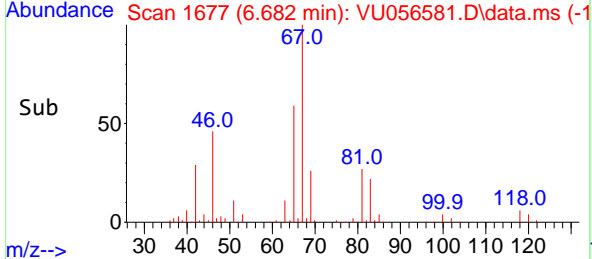
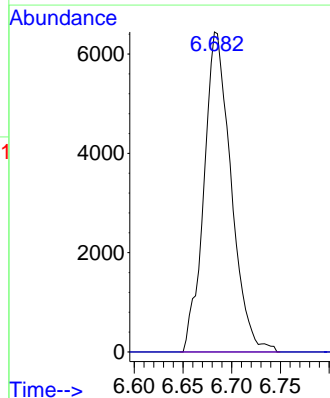
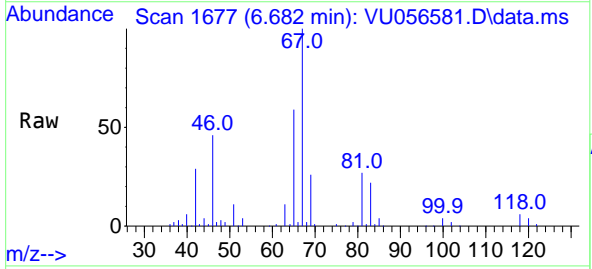


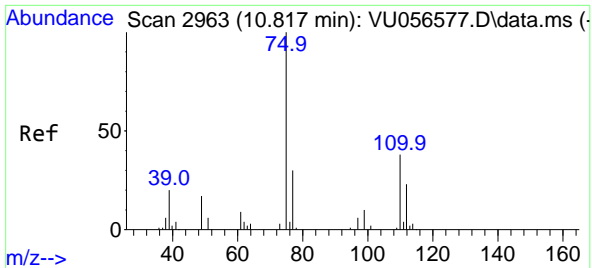
Tgt Ion: 83 Resp: 24997  
 Ion Ratio Lower Upper  
 83 100  
 55 0.4 62.9 94.3#  
 98 0.2 35.3 52.9#



#37  
 1,2-Dichloropropane  
 Concen: 0.582 ug/L  
 RT: 6.682 min Scan# 1677  
 Delta R.T. -0.100 min  
 Lab File: VU056581.D  
 Acq: 22 Nov 2023 12:09

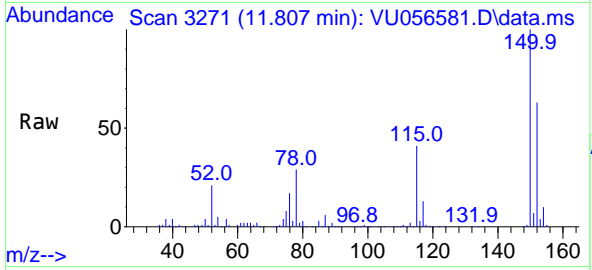
Tgt Ion: 63 Resp: 12496  
 Ion Ratio Lower Upper  
 63 100  
 112 0.0 3.2 4.8#





#61  
 1,2,3-Trichloropropane  
 Concen: 1.507 ug/L  
 RT: 11.807 min Scan# 31  
 Delta R.T. 0.990 min  
 Lab File: VU056581.D  
 Acq: 22 Nov 2023 12:09

Instrument :  
 MSVOA\_U  
 ClientSampleId :



Tgt Ion: 75 Resp: 16550

Ion	Ratio	Lower	Upper
75	100		
110	2.0	30.4	45.6#
77	34.3	27.0	40.6

