

Data Path : Z:\voasrv\HPCHEM1\MSVOA\_U\Data\VU112421\  
 Data File : VU046002.D  
 Acq On : 24 Nov 2021 18:14  
 Operator : SY/MD  
 Sample : M4779-11  
 Misc : 25.0mL/MSVOA\_U/WATER  
 ALS Vial : 19 Sample Multiplier: 1

Instrument :  
 MSVOA\_U  
 ClientSampleId :

Quant Time: Nov 26 00:22:36 2021  
 Quant Method : Z:\voasrv\HPCHEM1\MSVOA\_U\Method\SFAMUTR111521WMA.M  
 Quant Title : TRACE VOA SFAM1.0  
 QLast Update : Fri Nov 26 00:17:51 2021  
 Response via : Initial Calibration

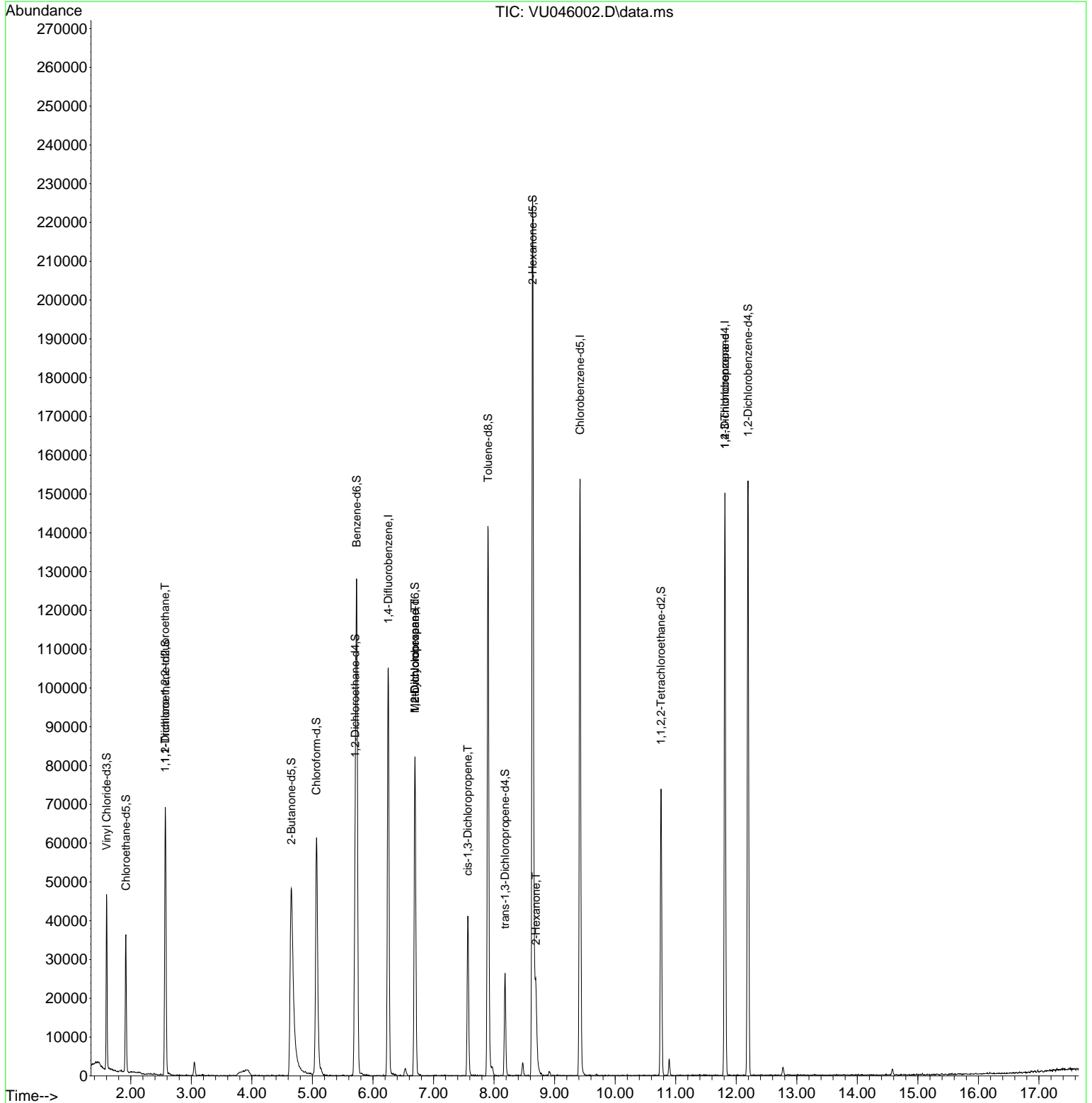
Compound	R.T.	QIon	Response	Conc	Units	Dev(Min)
-----						
Internal Standards						
1) 1,4-Difluorobenzene	6.253	114	87799	5.000	ug/L	0.00
28) Chlorobenzene-d5	9.420	117	87414	5.000	ug/L	0.00
58) 1,4-Dichlorobenzene-d4	11.812	152	39550	5.000	ug/L	0.00
System Monitoring Compounds						
4) Vinyl Chloride-d3	1.600	65	30933	4.447	ug/L	0.00
Spiked Amount	5.000	Range 40 - 130	Recovery	=	89.000%	
7) Chloroethane-d5	1.919	69	25788	5.093	ug/L	0.00
Spiked Amount	5.000	Range 65 - 130	Recovery	=	101.800%	
11) 1,1-Dichloroethene-d2	2.571	65	12992	4.453	ug/L	0.00
Spiked Amount	5.000	Range 60 - 125	Recovery	=	89.000%	
20) 2-Butanone-d5	4.652	46	121049	64.935	ug/L	-0.01
Spiked Amount	50.000	Range 40 - 130	Recovery	=	129.860%	
24) Chloroform-d	5.066	84	56218	4.851	ug/L	0.00
Spiked Amount	5.000	Range 70 - 125	Recovery	=	97.000%	
26) 1,2-Dichloroethane-d4	5.706	65	37277	5.482	ug/L	0.00
Spiked Amount	5.000	Range 70 - 130	Recovery	=	109.600%	
32) Benzene-d6	5.732	84	120684	5.013	ug/L	0.00
Spiked Amount	5.000	Range 70 - 125	Recovery	=	100.200%	
36) 1,2-Dichloropropane-d6	6.693	67	38902	5.128	ug/L	0.00
Spiked Amount	5.000	Range 60 - 140	Recovery	=	102.600%	
41) Toluene-d8	7.899	98	99660	4.576	ug/L	0.00
Spiked Amount	5.000	Range 70 - 130	Recovery	=	91.600%	
43) trans-1,3-Dichloroprop...	8.182	79	15839	5.143	ug/L	0.00
Spiked Amount	5.000	Range 55 - 130	Recovery	=	102.800%	
46) 2-Hexanone-d5	8.635	63	86809	62.622	ug/L	0.00
Spiked Amount	50.000	Range 45 - 130	Recovery	=	125.240%	
56) 1,1,2,2-Tetrachloroeth...	10.758	84	37079	5.785	ug/L	0.00
Spiked Amount	5.000	Range 65 - 120	Recovery	=	115.600%	
66) 1,2-Dichlorobenzene-d4	12.195	152	39847	5.868	ug/L	0.00
Spiked Amount	5.000	Range 80 - 120	Recovery	=	117.400%	
-----						
Target Compounds						Qvalue
10) 1,1,2-Trichloro-1,2,2-...	2.568	101	339	0.059	ug/L #	21
35) Methylcyclohexane	6.693	83	9428	0.977	ug/L #	18
37) 1,2-Dichloropropane	6.693	63	4372	0.681	ug/L #	88
39) cis-1,3-Dichloropropene	7.565	75	925	0.101	ug/L #	59
48) 2-Hexanone	8.693	43	11720	3.853	ug/L #	96
61) 1,2,3-Trichloropropane	11.812	75	5053	1.231	ug/L #	65
-----						

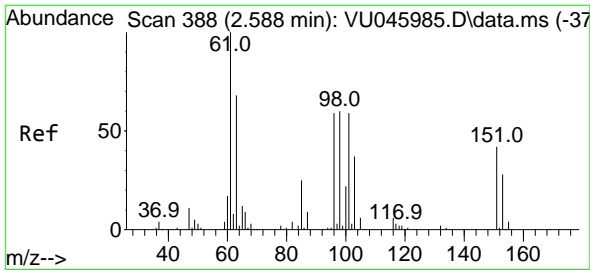
(#) = qualifier out of range (m) = manual integration (+) = signals summed

Data Path : Z:\voasrv\HPCHEM1\MSVOA\_U\Data\VU112421\  
 Data File : VU046002.D  
 Acq On : 24 Nov 2021 18:14  
 Operator : SY/MD  
 Sample : M4779-11  
 Misc : 25.0mL/MSVOA\_U/WATER  
 ALS Vial : 19 Sample Multiplier: 1

Instrument :  
 MSVOA\_U  
 ClientSampleId :

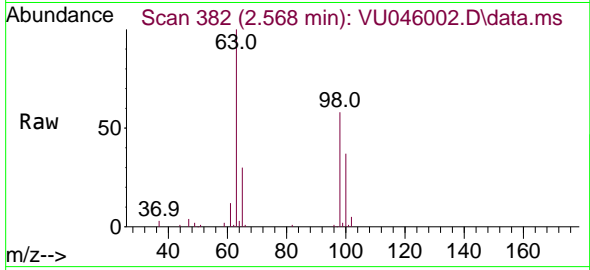
Quant Time: Nov 26 00:22:36 2021  
 Quant Method : Z:\voasrv\HPCHEM1\MSVOA\_U\Method\SFAMUTR111521WMA.M  
 Quant Title : TRACE VOA SFAM1.0  
 QLast Update : Fri Nov 26 00:17:51 2021  
 Response via : Initial Calibration





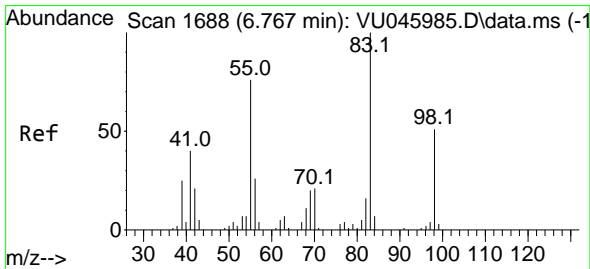
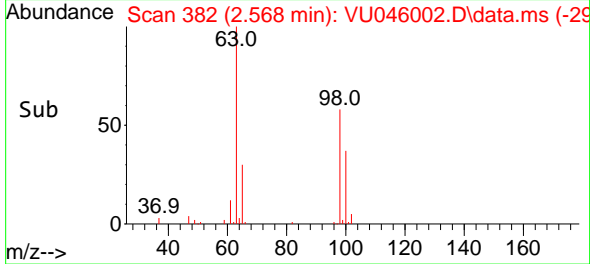
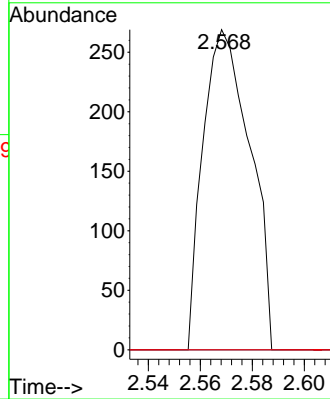
#10  
 1,1,2-Trichloro-1,2,2-trifluoroethane  
 Concen: 0.059 ug/L  
 RT: 2.568 min Scan# 31  
 Delta R.T. -0.019 min  
 Lab File: VU046002.D  
 Acq: 24 Nov 2021 18:14

Instrument :  
 MSVOA\_U  
 ClientSampleId :



Tgt Ion: 101 Resp: 339

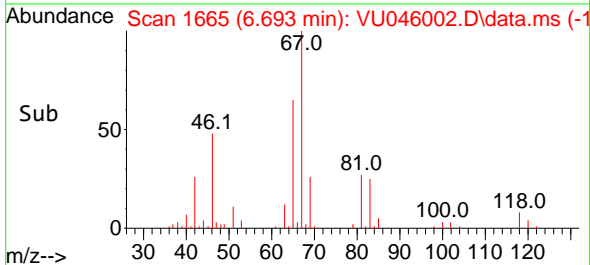
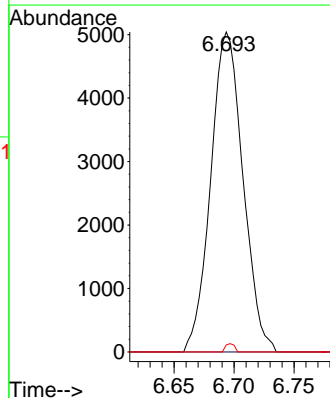
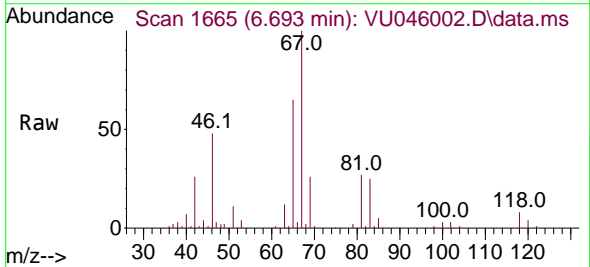
Ion	Ratio	Lower	Upper
101	100		
85	0.0	34.6	51.8#
151	0.0	56.1	84.1#

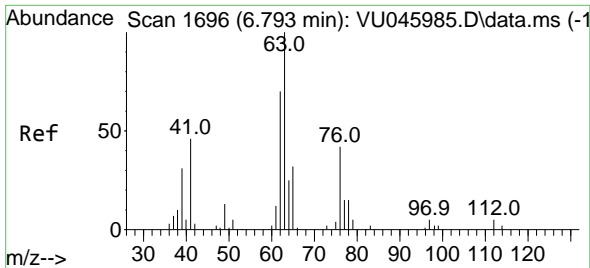


#35  
 Methylcyclohexane  
 Concen: 0.977 ug/L  
 RT: 6.693 min Scan# 1665  
 Delta R.T. -0.074 min  
 Lab File: VU046002.D  
 Acq: 24 Nov 2021 18:14

Tgt Ion: 83 Resp: 9428

Ion	Ratio	Lower	Upper
83	100		
55	0.0	61.9	92.9#
98	0.7	39.0	58.6#

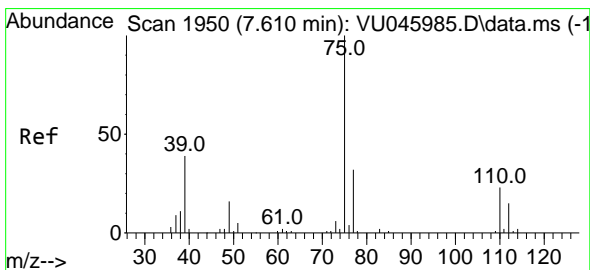
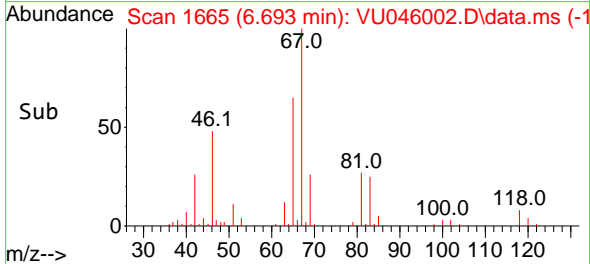
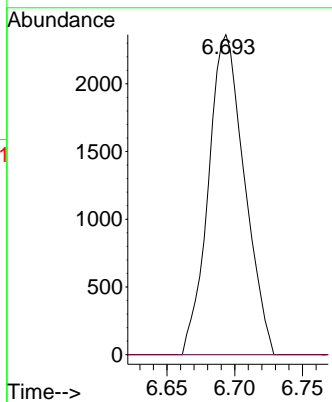
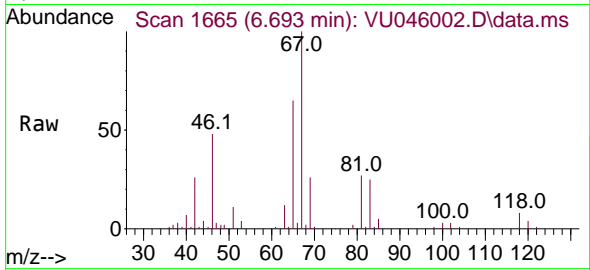




#37  
 1,2-Dichloropropane  
 Concen: 0.681 ug/L  
 RT: 6.693 min Scan# 1  
 Delta R.T. -0.100 min  
 Lab File: VU046002.D  
 Acq: 24 Nov 2021 18:14

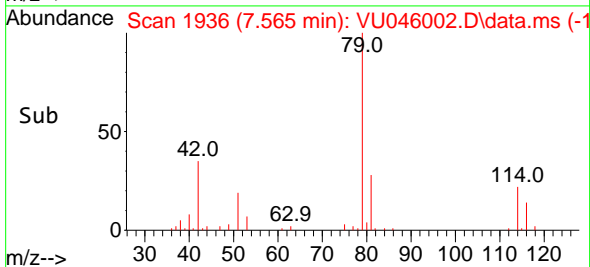
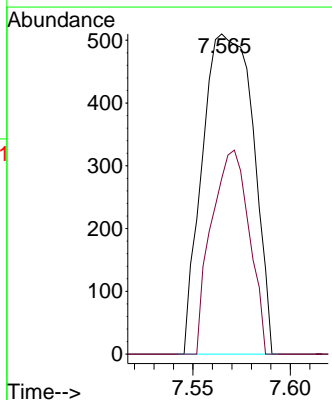
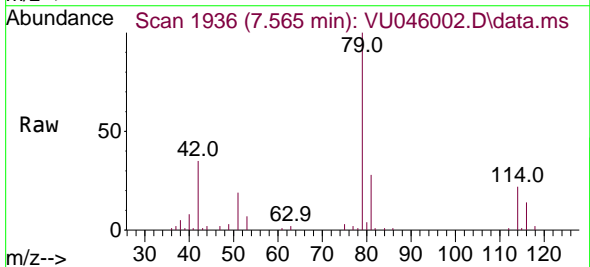
Instrument :  
 MSVOA\_U  
 ClientSampleId :

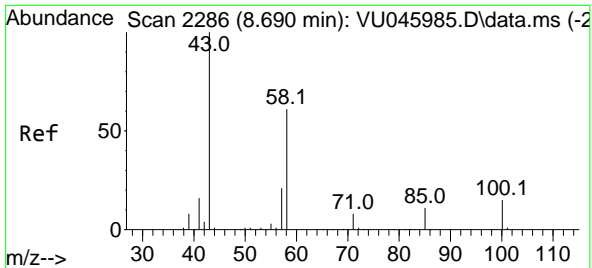
Tgt Ion: 63 Resp: 4372  
 Ion Ratio Lower Upper  
 63 100  
 112 0.0 3.2 4.8#



#39  
 cis-1,3-Dichloropropene  
 Concen: 0.101 ug/L  
 RT: 7.565 min Scan# 1936  
 Delta R.T. -0.045 min  
 Lab File: VU046002.D  
 Acq: 24 Nov 2021 18:14

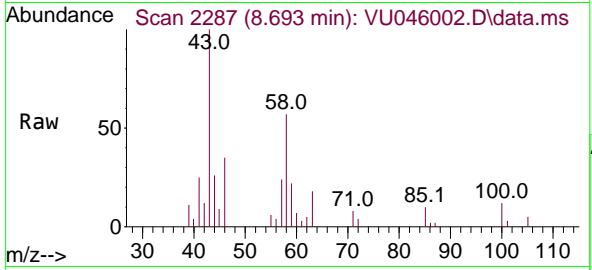
Tgt Ion: 75 Resp: 925  
 Ion Ratio Lower Upper  
 75 100  
 77 54.9 22.5 41.9#





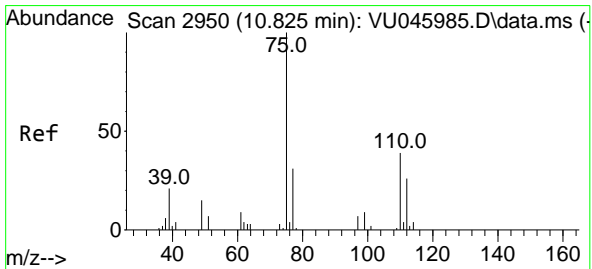
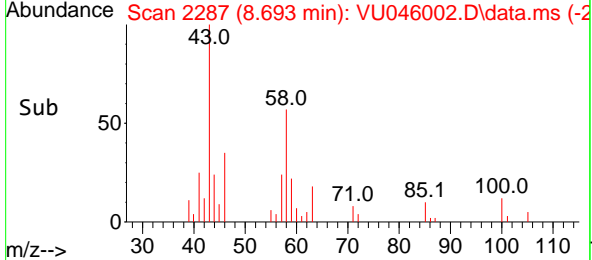
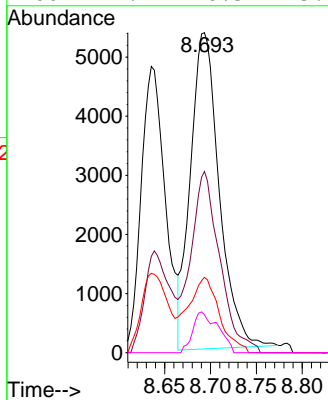
#48  
 2-Hexanone  
 Concen: 3.853 ug/L  
 RT: 8.693 min Scan# 21  
 Delta R.T. 0.003 min  
 Lab File: VU046002.D  
 Acq: 24 Nov 2021 18:14

Instrument :  
 MSVOA\_U  
 ClientSampleId :



Tgt Ion: 43 Resp: 11720

Ion	Ratio	Lower	Upper
43	100		
58	57.5	46.7	70.1
57	25.4	16.3	24.5
100	11.2	10.5	15.7



#61  
 1,2,3-Trichloropropane  
 Concen: 1.231 ug/L  
 RT: 11.812 min Scan# 3257  
 Delta R.T. 0.987 min  
 Lab File: VU046002.D  
 Acq: 24 Nov 2021 18:14

Tgt Ion: 75 Resp: 5053

Ion	Ratio	Lower	Upper
75	100		
110	0.0	29.9	44.9
77	30.1	25.5	38.3

