

Data Path : Z:\VOASRV\HPCHEM1\MSVOA U\DATA\VU112818\
 Data File : VU028372.D
 Acq On : 28 Nov 2018 17:44
 Operator : MD/SY
 Sample : PB115109ZHE#01
 Misc : 5.0mL/MSVOA U/WATER
 ALS Vial : 22 Sample Multiplier: 1

Instrument :
 MSVOA_U
 ClientSampled :
 PB115109ZHE#01

Quant Time: Nov 29 06:18:45 2018
 Quant Method : Z:\VOASRV\HPCHEM1\MSVOA_U\METHOD\82U112818W.M
 Quant Title : SW846 8260
 QLast Update : Thu Nov 29 01:04:49 2018
 Response via : Initial Calibration

Internal Standards	R.T.	QIon	Response	Conc	Units	Dev(Min)
1) Pentafluorobenzene	4.98	168	254254	50.00	ug/l	0.00
34) 1,4-Difluorobenzene	5.88	114	477910	50.00	ug/l	0.00
63) Chlorobenzene-d5	9.09	117	431723	50.00	ug/l	0.00
72) 1,4-Dichlorobenzene-d4	11.48	152	170737	50.00	ug/l	0.00

System Monitoring Compounds

33) 1,2-Dichloroethane-d4	5.31	65	218211	51.35	ug/l	0.00
Spiked Amount	50.000		Recovery	=	102.70%	
35) Dibromofluoromethane	4.88	113	155086	48.80	ug/l	0.00
Spiked Amount	50.000		Recovery	=	97.60%	
50) Toluene-d8	7.57	98	615637	48.44	ug/l	0.00
Spiked Amount	50.000		Recovery	=	96.88%	
62) 4-Bromofluorobenzene	10.30	95	206669	45.12	ug/l	0.00
Spiked Amount	50.000		Recovery	=	90.24%	

Target Compounds

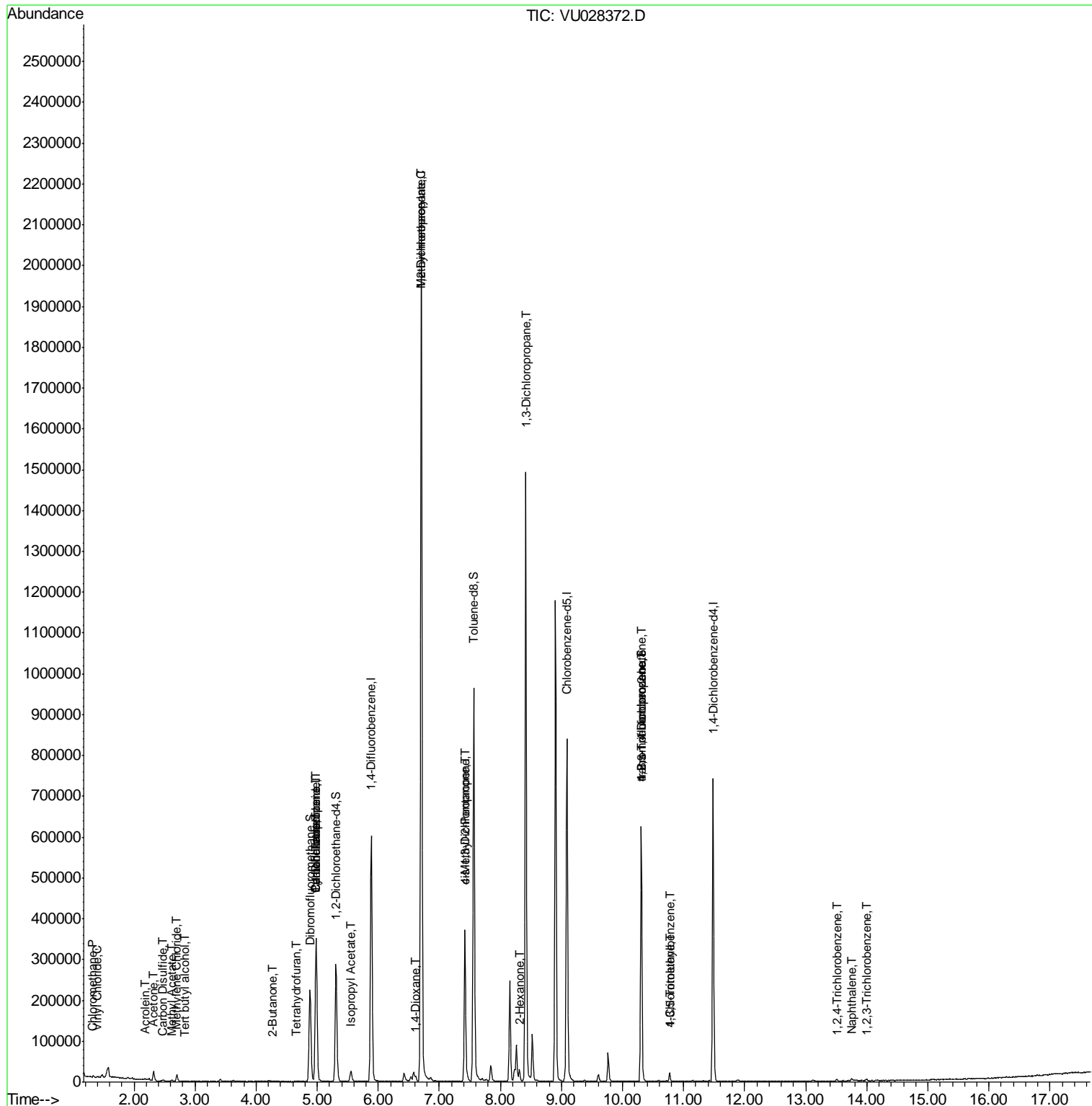
					Qvalue
3) Chloromethane	1.33	50	5524	0.836	ug/l 100
4) Vinyl Chloride	1.40	62	1203	0.260	ug/l 91
11) Tert butyl alcohol	2.82	59	490	0.508	ug/l # 72
13) Acrolein	2.19	56	474	0.552	ug/l # 14
16) Acetone	2.32	43	24044	9.250	ug/l 95
17) Carbon Disulfide	2.48	76	2833	0.272	ug/l 97
18) Methyl Acetate	2.62	43	3934	0.544	ug/l # 91
20) Methylene Chloride	2.70	84	6491	1.699	ug/l 95
25) 2-Butanone	4.28	43	2151	0.577	ug/l 98
29) Tetrahydrofuran	4.66	42	2143	0.886	ug/l # 65
31) Cyclohexane	4.99	56	6340	0.515	ug/l # 1
36) 1,1-Dichloropropene	4.98	75	23374	4.469	ug/l # 50
38) Carbon Tetrachloride	4.98	117	25788	6.005	ug/l # 16
43) Isopropyl Acetate	5.55	43	33170	2.937	ug/l 100
45) 1,2-Dichloropropane	6.70	63	2149	0.474	ug/l # 43
48) Methyl methacrylate	6.70	41	185375	31.511	ug/l # 47
49) 1,4-Dioxane	6.62	88	42	0.447	ug/l # 15
51) 4-Methyl-2-Pentanone	7.42	43	151089	20.947	ug/l # 49
54) cis-1,3-Dichloropropene	7.42	75	61513	9.266	ug/l # 57
57) 1,3-Dichloropropane	8.41	76	13286	1.952	ug/l # 43
59) 2-Hexanone	8.31	43	22831	4.086	ug/l # 27
76) 1,2,3-Trichloropropane	10.30	75	110601	23.360	ug/l # 33
80) 1,3,5-Trimethylbenzene	10.77	105	10443	0.933	ug/l 95
81) trans-1,4-Dichloro-2-buten	10.30	75	110601	62.008	ug/l # 100
82) 4-Chlorotoluene	10.77	91	2711	0.244	ug/l 80
93) 1,2,4-Trichlorobenzene	13.51	180	1089	0.292	ug/l 98
95) Naphthalene	13.75	128	5391	3.189	ug/l # 88
96) 1,2,3-Trichlorobenzene	13.99	180	1397	0.371	ug/l 85

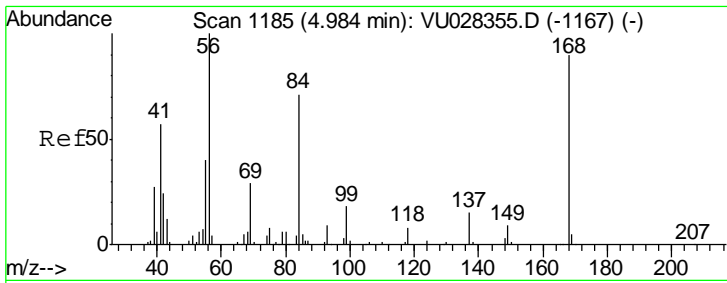
(#) = qualifier out of range (m) = manual integration (+) = signals summed

Data Path : Z:\VOASRV\HPCHEM1\MSVOA U\DATA\VU112818\
 Data File : VU028372.D
 Acq On : 28 Nov 2018 17:44
 Operator : MD/SY
 Sample : PB115109ZHE#01
 Misc : 5.0mL/MSVOA U/WATER
 ALS Vial : 22 Sample Multiplier: 1

Instrument :
 MSVOA_U
 ClientSampleId :
 PB115109ZHE#01

Quant Time: Nov 29 06:18:45 2018
 Quant Method : Z:\VOASRV\HPCHEM1\MSVOA_U\METHOD\82U112818W.M
 Quant Title : SW846 8260
 QLast Update : Thu Nov 29 01:04:49 2018
 Response via : Initial Calibration

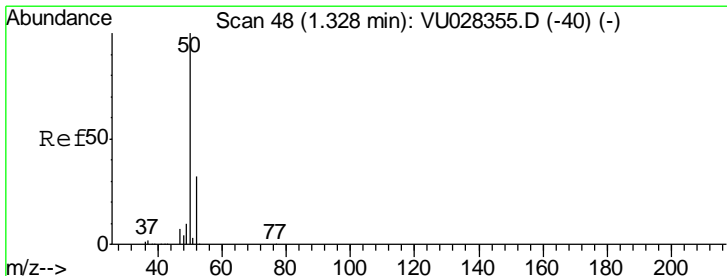
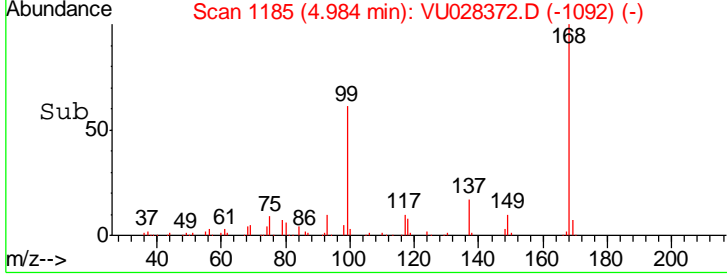
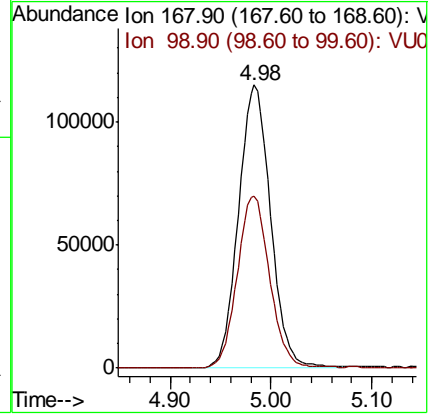
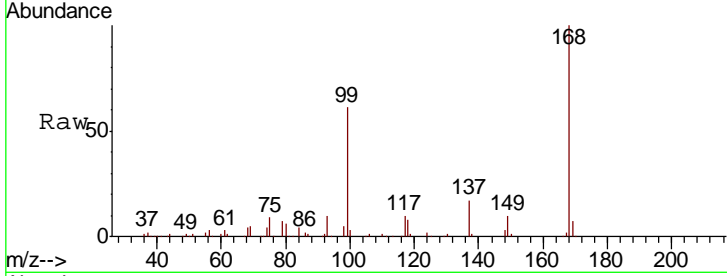




#1
 Pentafluorobenzene
 Concen: 50.000 ug/l
 RT: 4.98 min Scan# 1185
 Delta R.T. -0.00 min
 Lab File: VU028372.D
 Acq: 28 Nov 2018 17:44

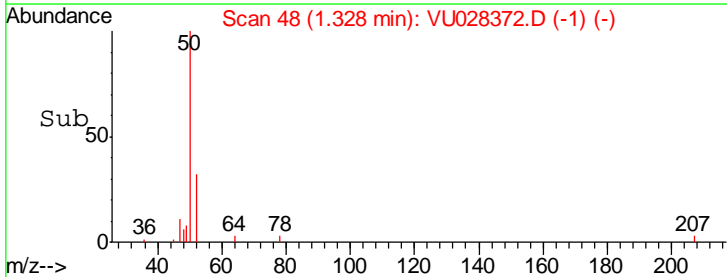
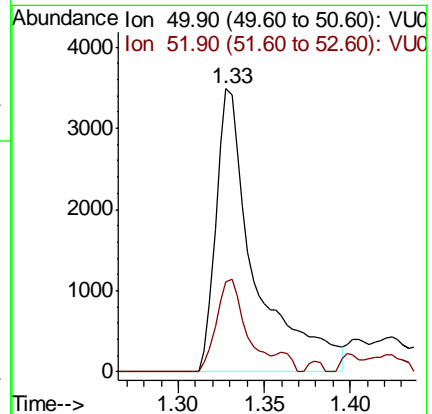
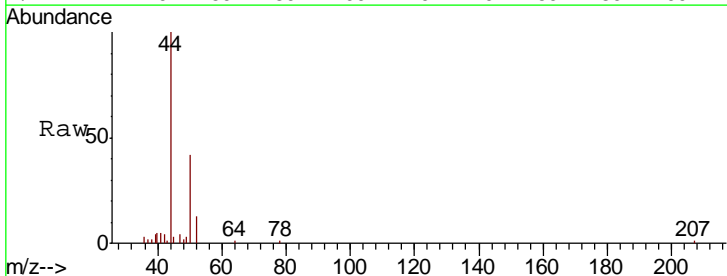
Instrument : MSVOA_U
 ClientSampleId : PB115109ZHE#01

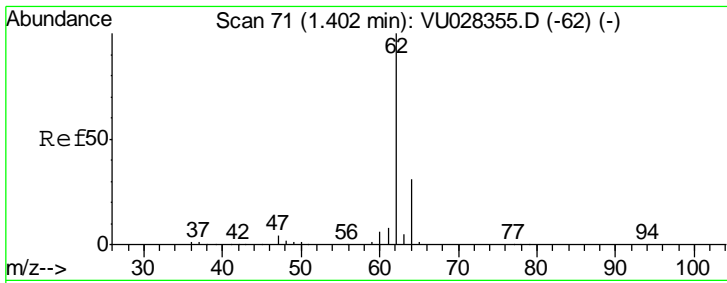
Tgt Ion: 168 Resp: 254254
 Ion Ratio Lower Upper
 168 100
 99 60.9 49.6 74.4



#3
 Chloromethane
 Concen: 0.836 ug/l
 RT: 1.33 min Scan# 48
 Delta R.T. -0.00 min
 Lab File: VU028372.D
 Acq: 28 Nov 2018 17:44

Tgt Ion: 50 Resp: 5524
 Ion Ratio Lower Upper
 50 100
 52 32.0 25.4 38.2

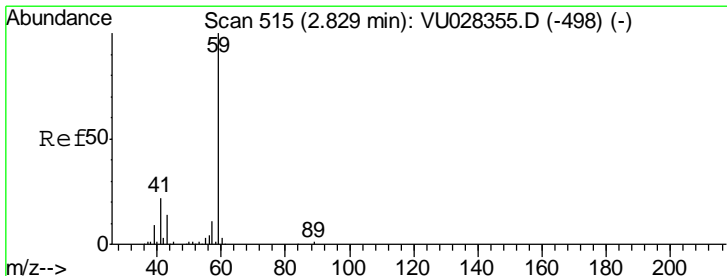
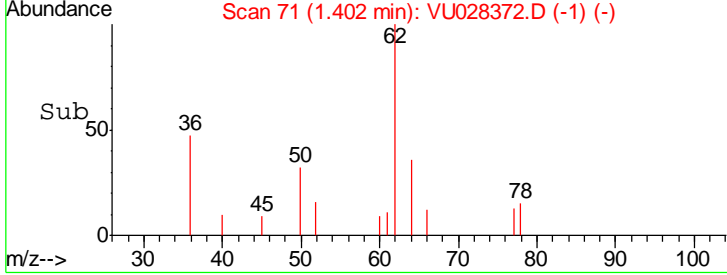
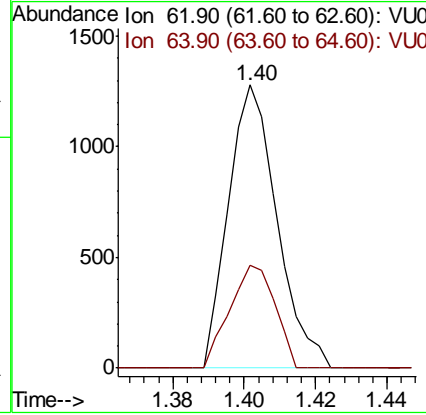
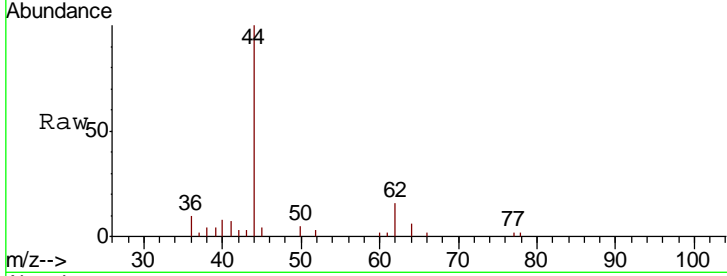




#4
 Vinyl Chloride
 Concen: 0.260 ug/l
 RT: 1.40 min Scan# 71
 Delta R.T. -0.00 min
 Lab File: VU028372.D
 Acq: 28 Nov 2018 17:44

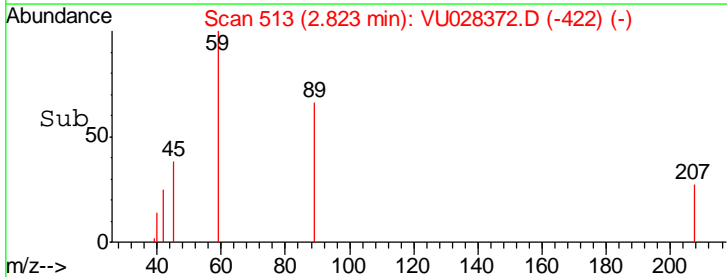
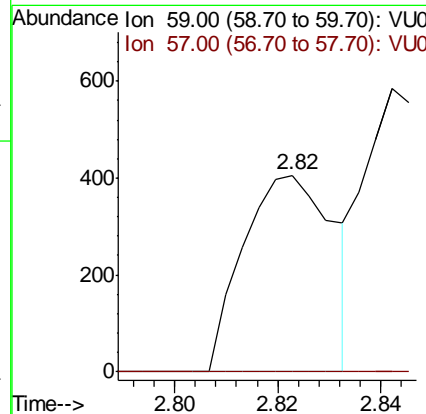
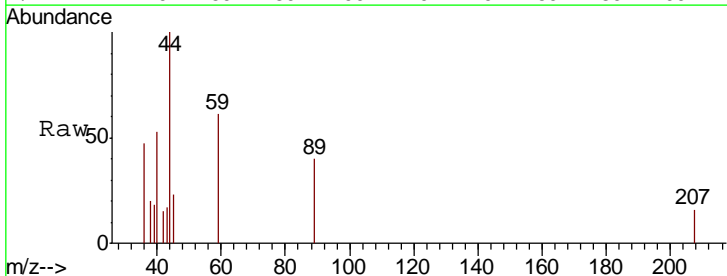
Instrument : MSVOA_U
 ClientSampled : PB115109ZHE#01

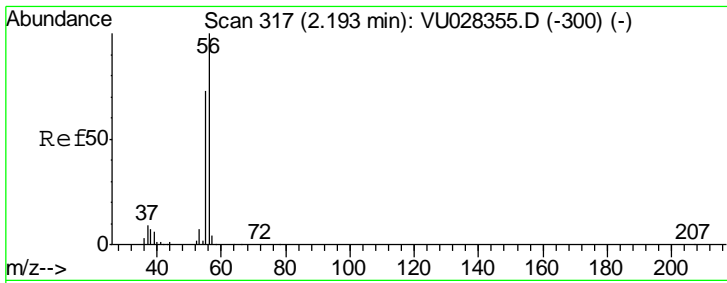
Tgt Ion: 62 Resp: 1203
 Ion Ratio Lower Upper
 62 100
 64 36.2 25.0 37.4



#11
 Tert butyl alcohol
 Concen: 0.508 ug/l
 RT: 2.82 min Scan# 513
 Delta R.T. -0.01 min
 Lab File: VU028372.D
 Acq: 28 Nov 2018 17:44

Tgt Ion: 59 Resp: 490
 Ion Ratio Lower Upper
 59 100
 57 0.0 8.3 12.5#

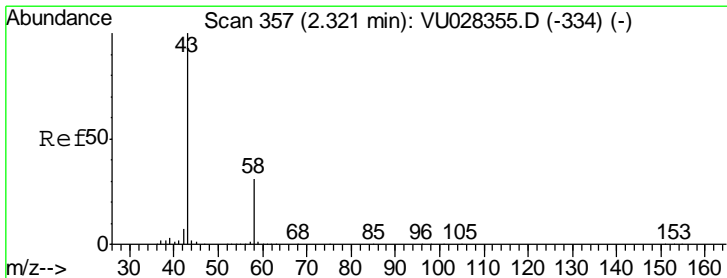
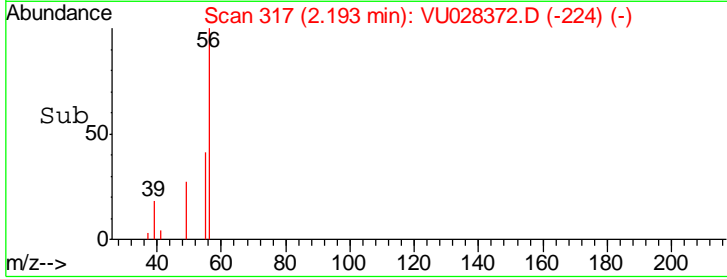
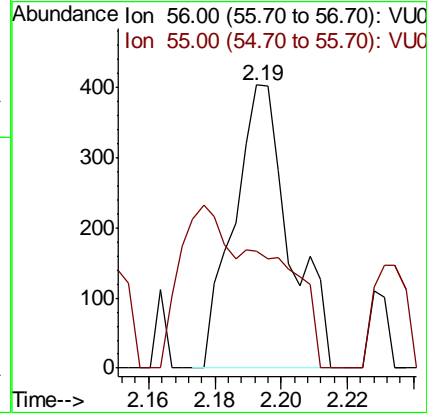
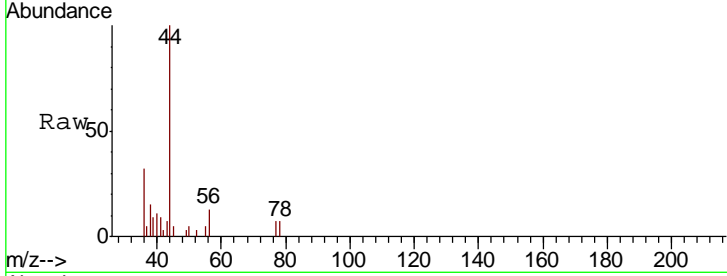




#13
 Acrolein
 Concen: 0.552 ug/l
 RT: 2.19 min Scan# 317
 Delta R.T. -0.00 min
 Lab File: VU028372.D
 Acq: 28 Nov 2018 17:44

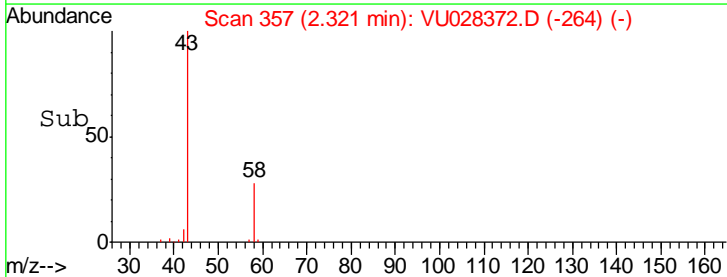
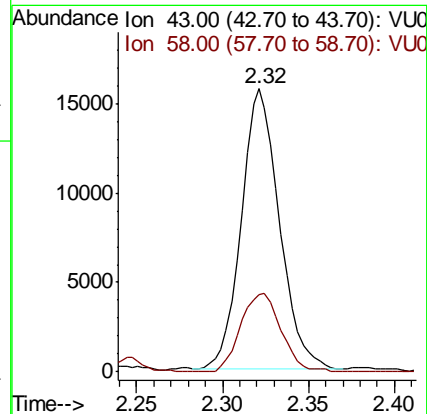
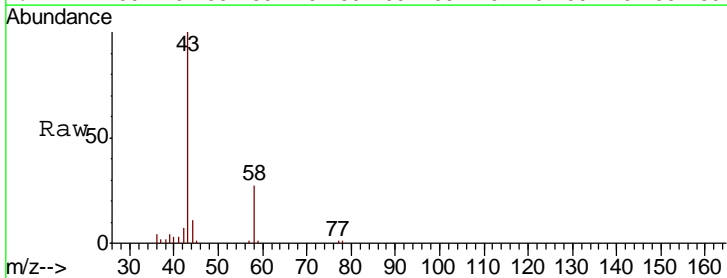
Instrument :
 MSVOA_U
 ClientSampled :
 PB115109ZHE#01

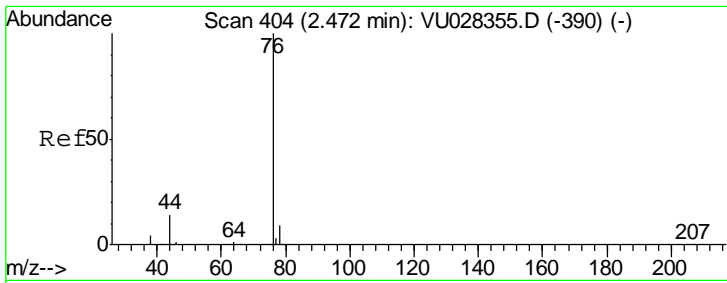
Tgt Ion	Resp	Lower	Upper
56	100		
55	0.0	56.6	85.0#



#16
 Acetone
 Concen: 9.250 ug/l
 RT: 2.32 min Scan# 357
 Delta R.T. -0.00 min
 Lab File: VU028372.D
 Acq: 28 Nov 2018 17:44

Tgt Ion	Resp	Lower	Upper
43	100		
58	27.7	24.4	36.6

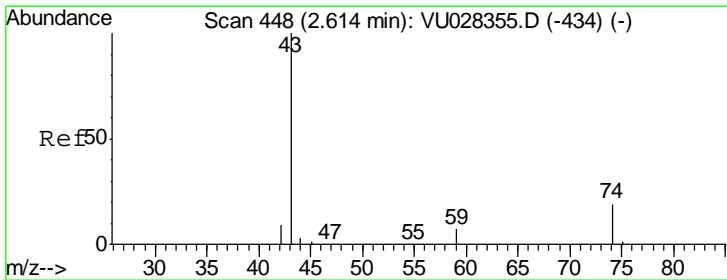
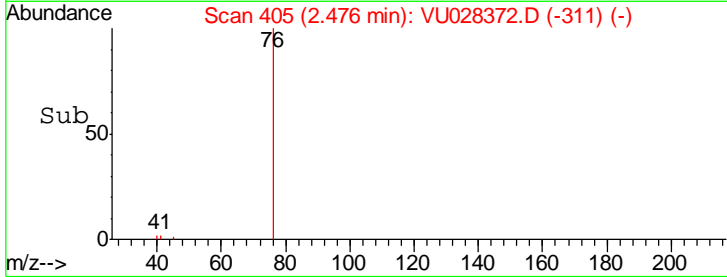
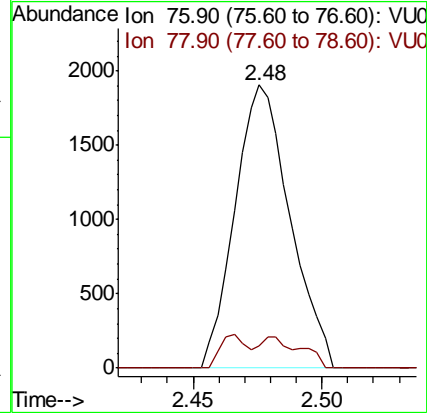
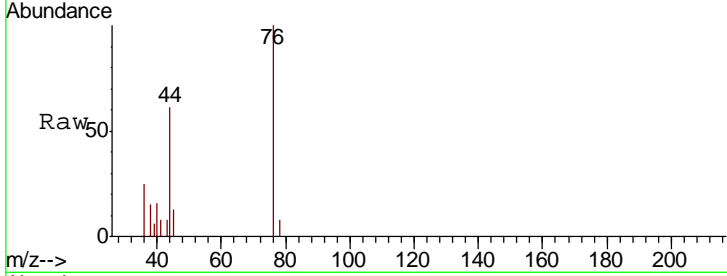




#17
 Carbon Disulfide
 Concen: 0.272 ug/l
 RT: 2.48 min Scan# 405
 Delta R.T. 0.00 min
 Lab File: VU028372.D
 Acq: 28 Nov 2018 17:44

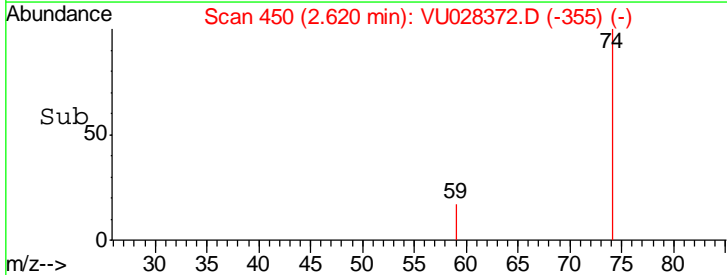
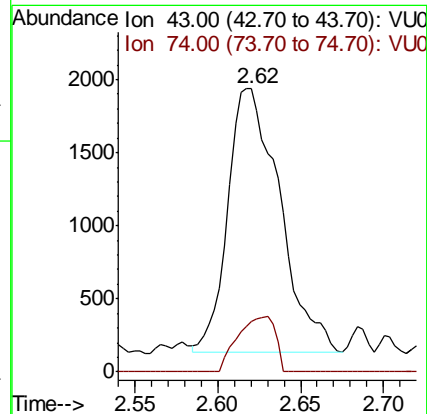
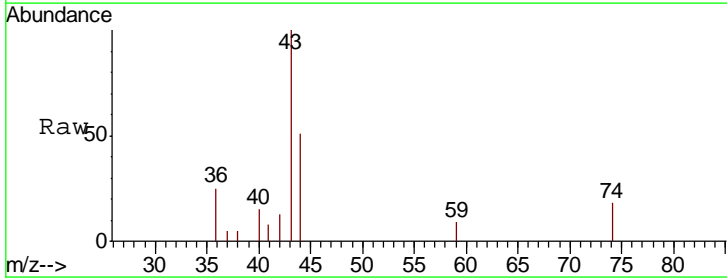
Instrument : MSVOA_U
 ClientSampled : PB115109ZHE#01

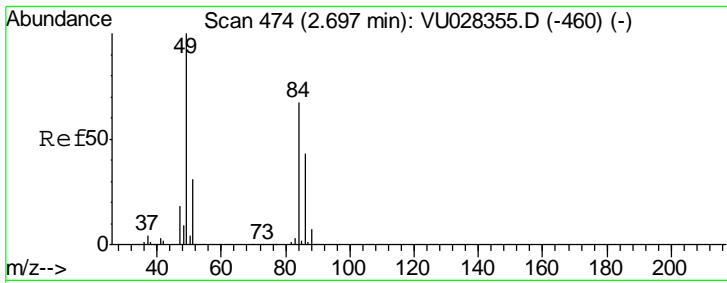
Tgt Ion	Resp	Lower	Upper
76	2833		
78	8.1	7.4	11.2



#18
 Methyl Acetate
 Concen: 0.544 ug/l
 RT: 2.62 min Scan# 450
 Delta R.T. 0.01 min
 Lab File: VU028372.D
 Acq: 28 Nov 2018 17:44

Tgt Ion	Resp	Lower	Upper
43	3934		
74	15.1	15.3	22.9#

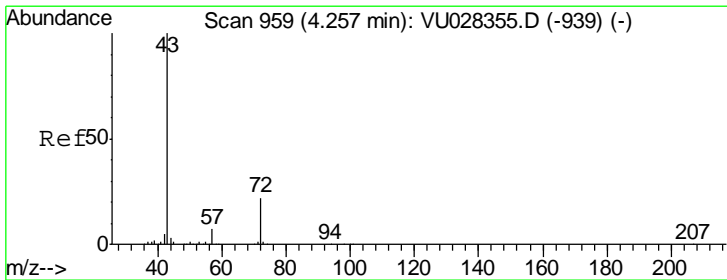
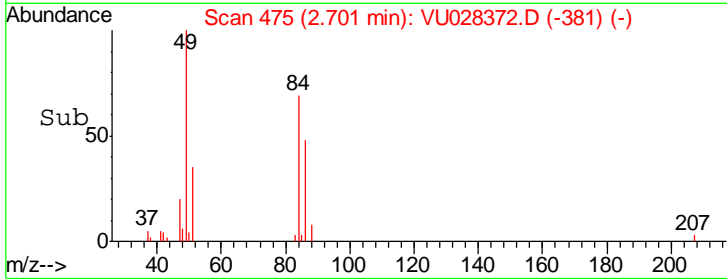
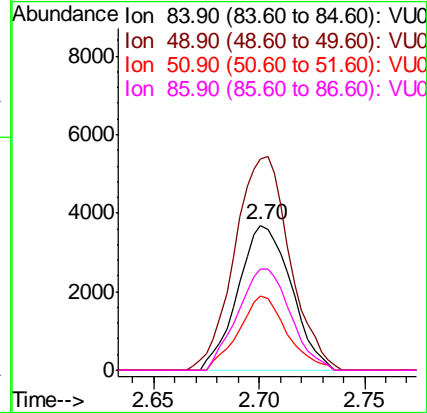
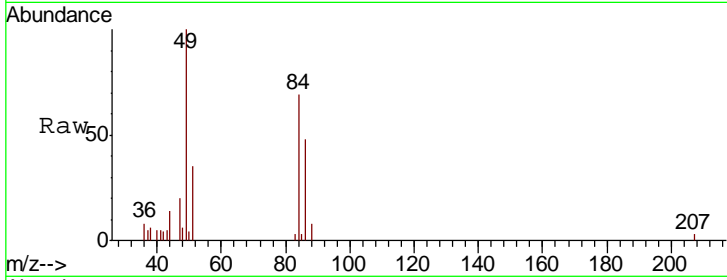




#20
 Methylene Chloride
 Concen: 1.699 ug/l
 RT: 2.70 min Scan# 475
 Delta R.T. 0.00 min
 Lab File: VU028372.D
 Acq: 28 Nov 2018 17:44

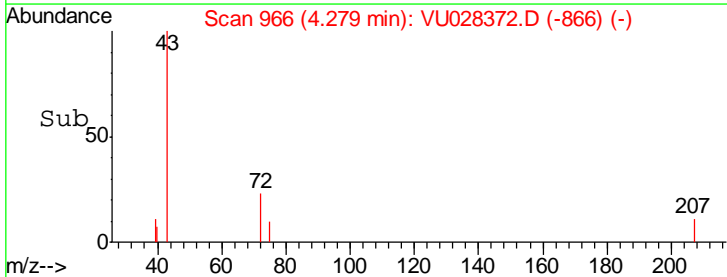
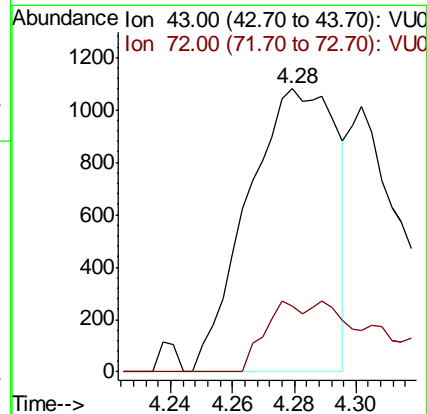
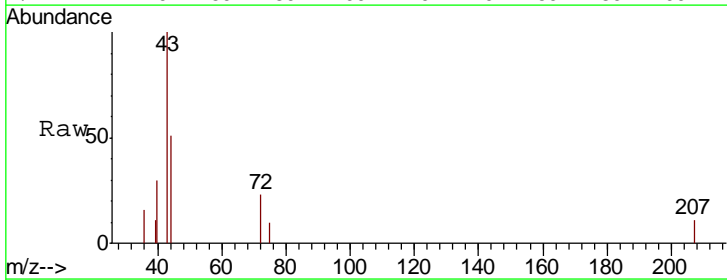
Instrument : MSVOA_U
 ClientSampled : PB115109ZHE#01

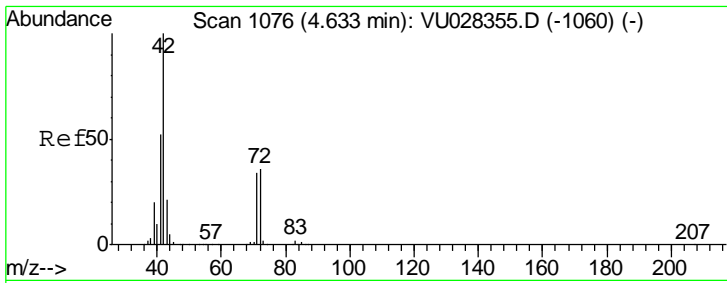
Tgt Ion	Resp	Lower	Upper
84	100		
49	145.6	120.0	180.0
51	51.2	36.9	55.3
86	69.5	51.1	76.7



#25
 2-Butanone
 Concen: 0.577 ug/l
 RT: 4.28 min Scan# 966
 Delta R.T. 0.02 min
 Lab File: VU028372.D
 Acq: 28 Nov 2018 17:44

Tgt Ion	Resp	Lower	Upper
43	100		
72	23.2	17.7	26.5

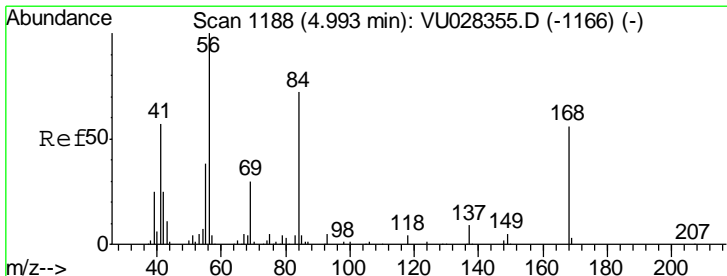
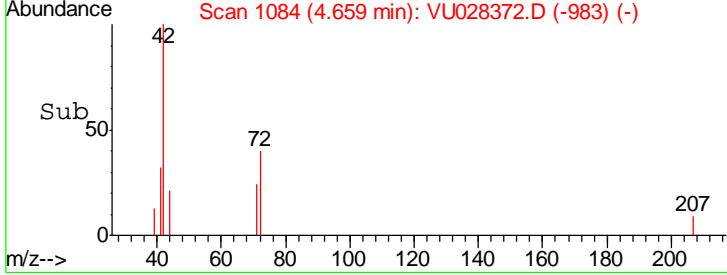
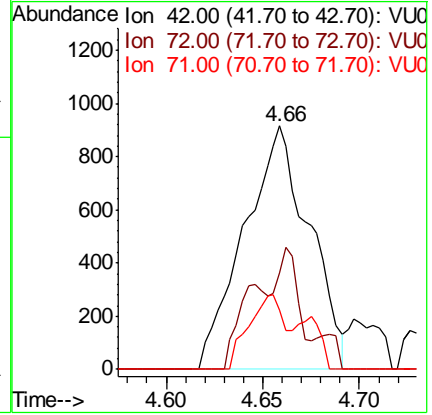
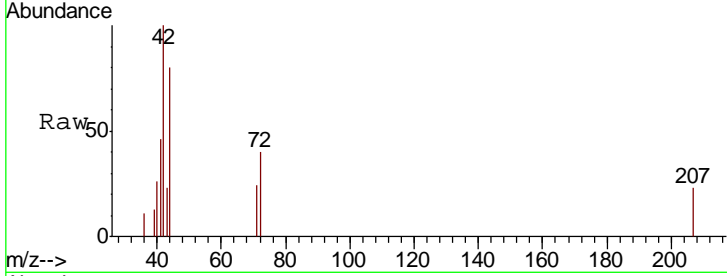




#29
 Tetrahydrofuran
 Concen: 0.886 ug/l
 RT: 4.66 min Scan# 1084
 Delta R.T. 0.03 min
 Lab File: VU028372.D
 Acq: 28 Nov 2018 17:44

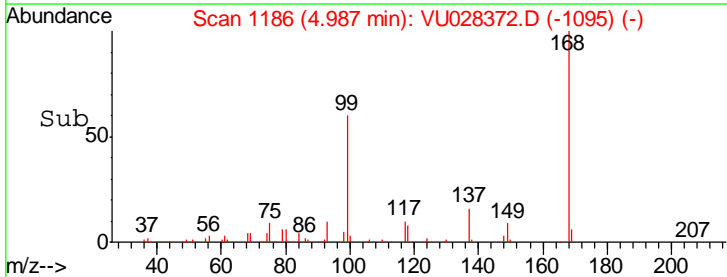
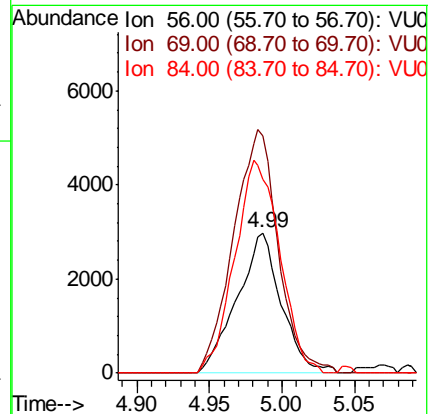
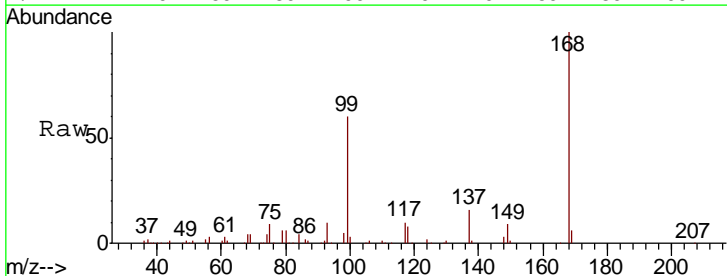
Instrument : MSVOA_U
 ClientSampleId : PB115109ZHE#01

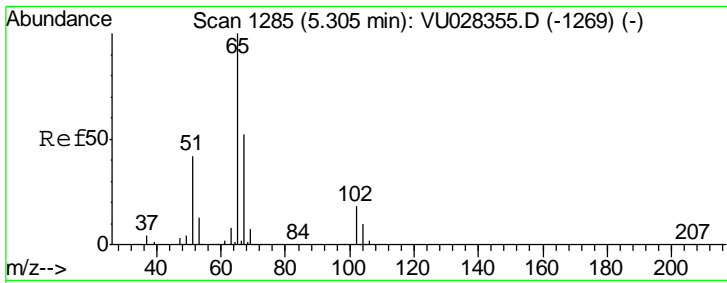
Tgt Ion	Resp	Lower	Upper
42	100		
72	12.9	29.5	44.3#
71	17.2	27.7	41.5#



#31
 Cyclohexane
 Concen: 0.515 ug/l
 RT: 4.99 min Scan# 1186
 Delta R.T. -0.01 min
 Lab File: VU028372.D
 Acq: 28 Nov 2018 17:44

Tgt Ion	Resp	Lower	Upper
56	100		
69	169.0	23.7	35.5#
84	137.6	57.3	85.9#

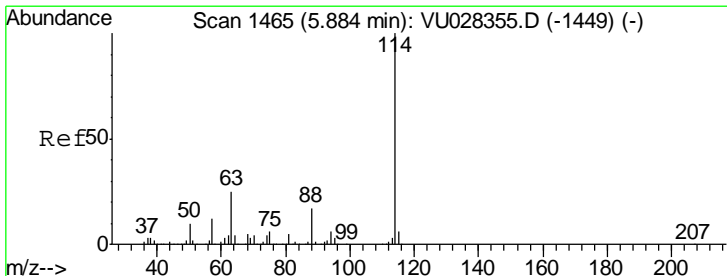
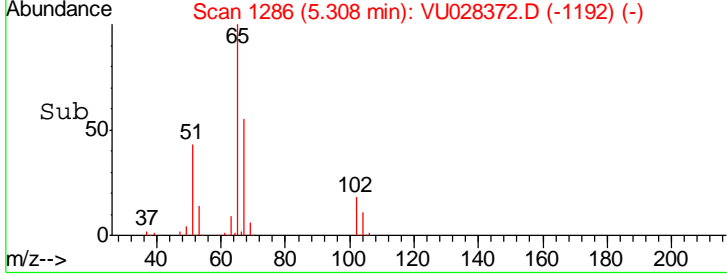
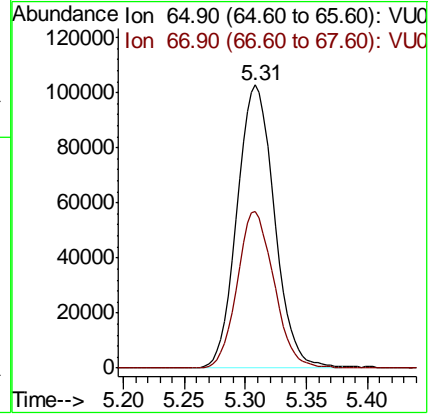
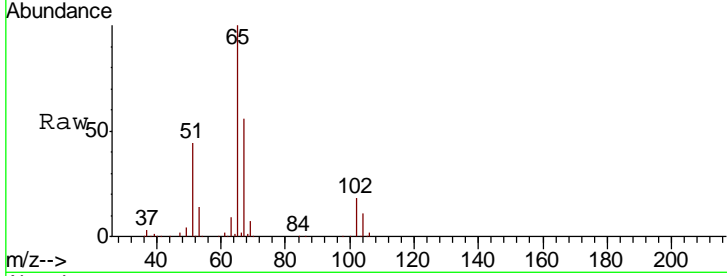




#33
 1,2-Dichloroethane-d4
 Concen: 51.353 ug/l
 RT: 5.31 min Scan# 1286
 Delta R.T. 0.00 min
 Lab File: VU028372.D
 Acq: 28 Nov 2018 17:44

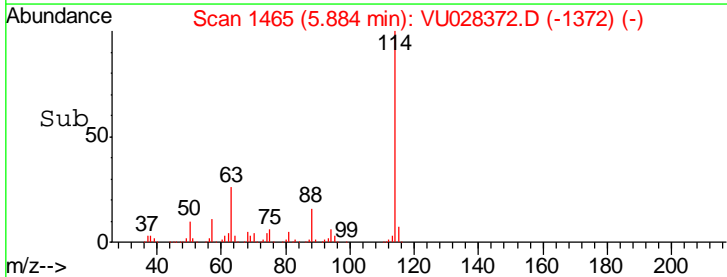
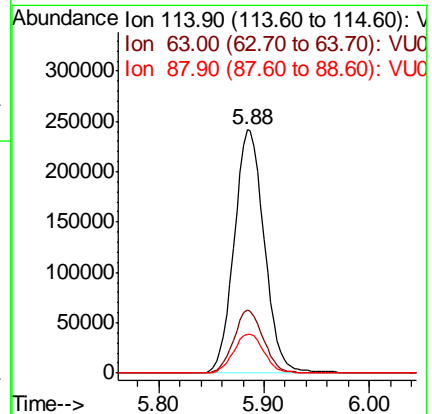
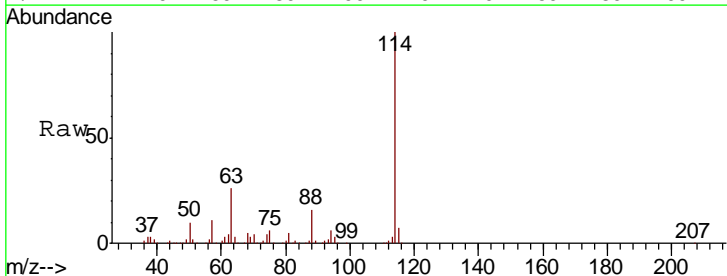
Instrument :
 MSVOA_U
ClientSampleId :
 PB115109ZHE#01

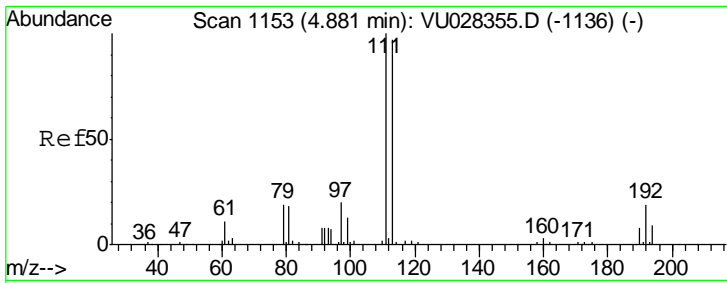
Tgt Ion	Resp	Lower	Upper
65	100		
67	54.6	0.0	106.8



#34
 1,4-Difluorobenzene
 Concen: 50.000 ug/l
 RT: 5.88 min Scan# 1465
 Delta R.T. -0.00 min
 Lab File: VU028372.D
 Acq: 28 Nov 2018 17:44

Tgt Ion	Resp	Lower	Upper
114	100		
63	26.0	0.0	50.0
88	16.1	0.0	34.4

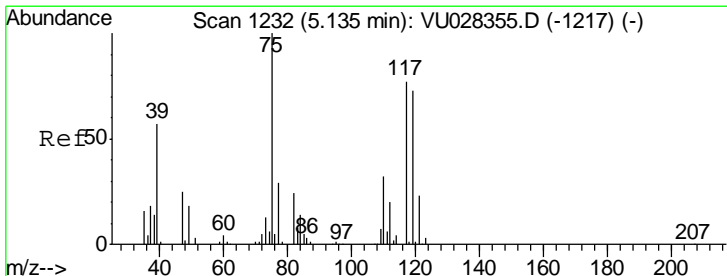
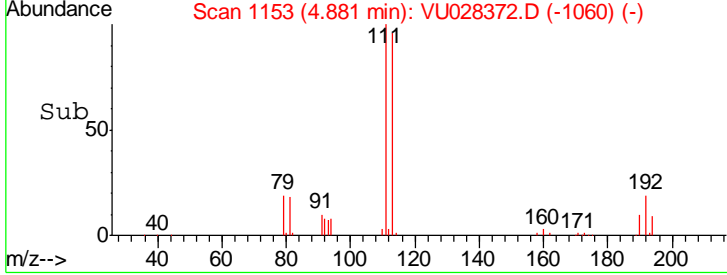
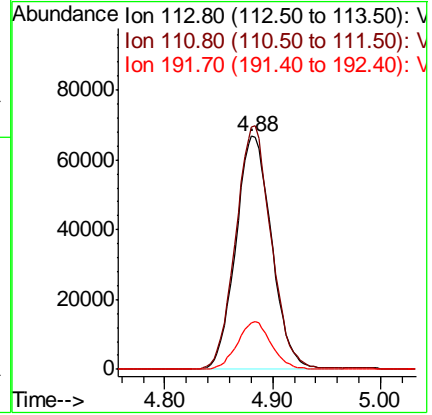
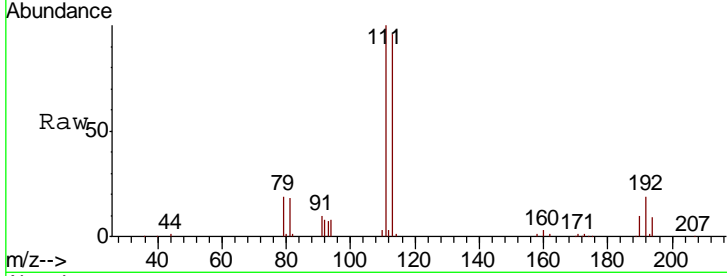




#35
 Dibromofluoromethane
 Concen: 48.801 ug/l
 RT: 4.88 min Scan# 1153
 Delta R.T. -0.00 min
 Lab File: VU028372.D
 Acq: 28 Nov 2018 17:44

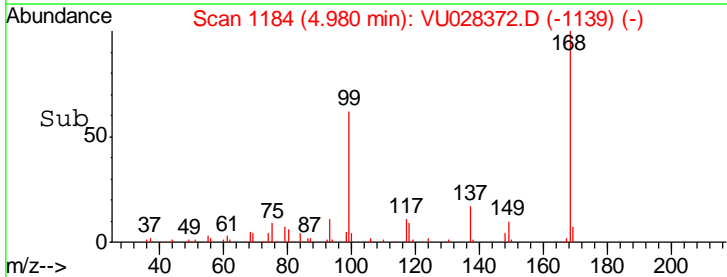
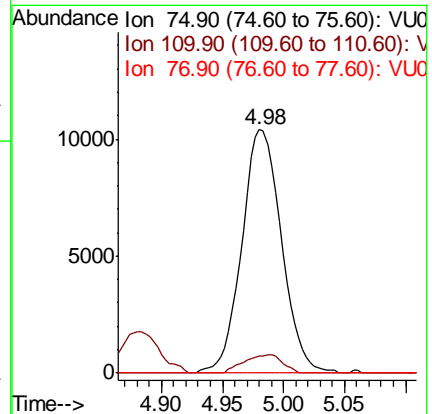
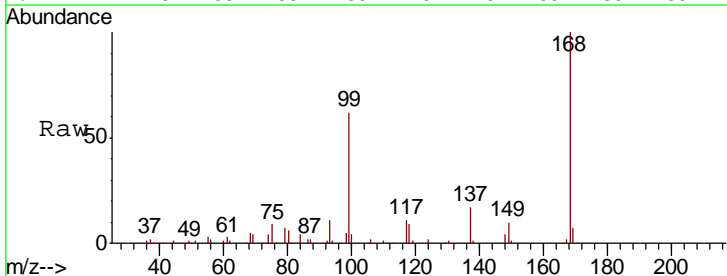
Instrument : MSVOA_U
 ClientSampled : PB115109ZHE#01

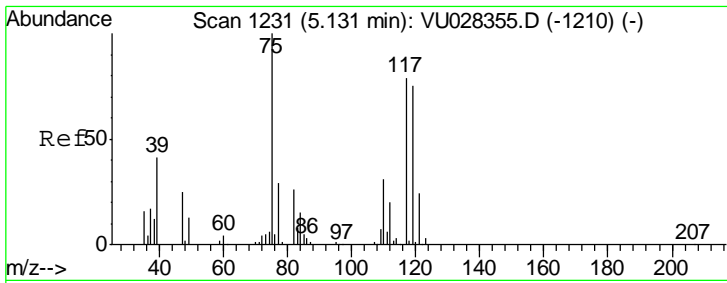
Tgt Ion	Resp	Lower	Upper
113	100		
111	103.3	82.9	124.3
192	19.4	15.4	23.0



#36
 1,1-Dichloropropene
 Concen: 4.469 ug/l
 RT: 4.98 min Scan# 1184
 Delta R.T. -0.15 min
 Lab File: VU028372.D
 Acq: 28 Nov 2018 17:44

Tgt Ion	Resp	Lower	Upper
75	100		
110	7.2	15.8	47.4#
77	0.0	24.6	36.8#

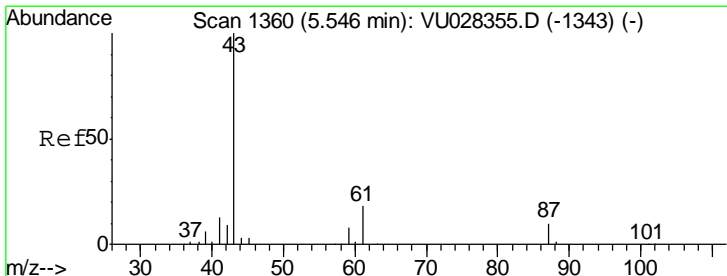
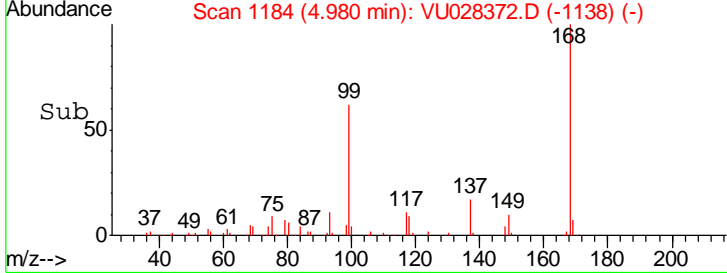
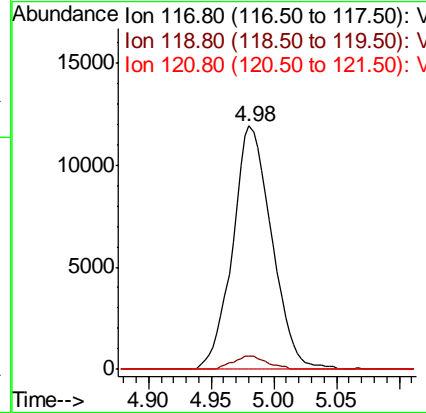
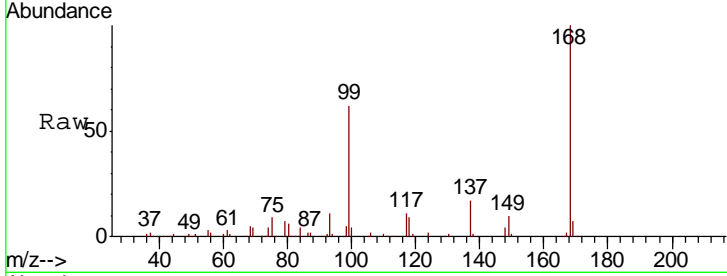




#38
 Carbon Tetrachloride
 Concen: 6.005 ug/l
 RT: 4.98 min Scan# 1184
 Delta R.T. -0.15 min
 Lab File: VU028372.D
 Acq: 28 Nov 2018 17:44

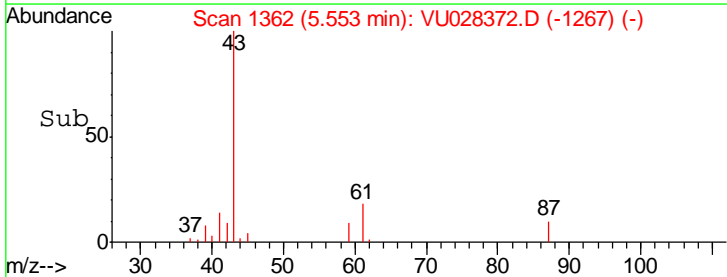
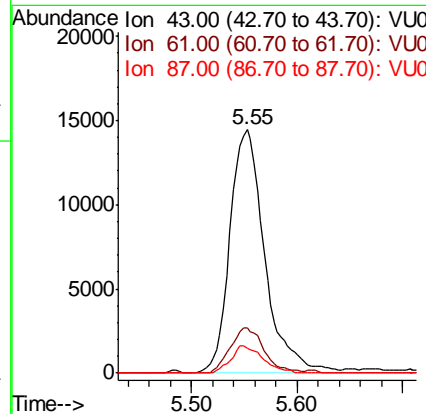
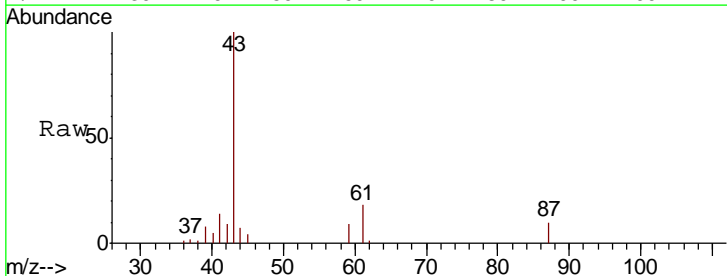
Instrument : MSVOA_U
 ClientSampled : PB115109ZHE#01

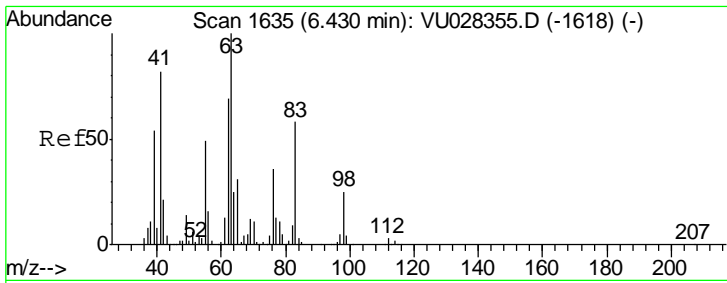
Tgt Ion	Resp	Lower	Upper
117	25788		
117	100		
119	5.5	76.3	114.5#
121	0.0	24.7	37.1#



#43
 Isopropyl Acetate
 Concen: 2.937 ug/l
 RT: 5.55 min Scan# 1362
 Delta R.T. 0.01 min
 Lab File: VU028372.D
 Acq: 28 Nov 2018 17:44

Tgt Ion	Resp	Lower	Upper
43	33170		
43	100		
61	18.0	14.5	21.7
87	10.2	8.4	12.6

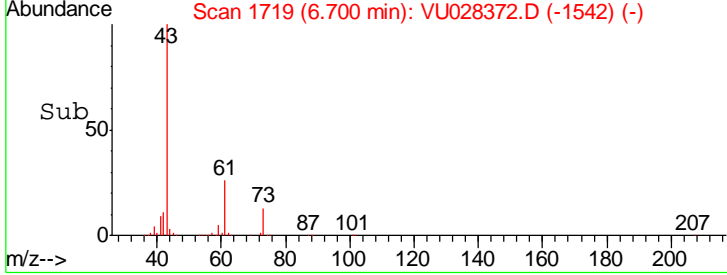
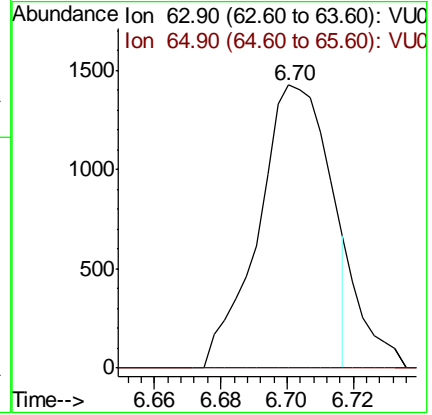
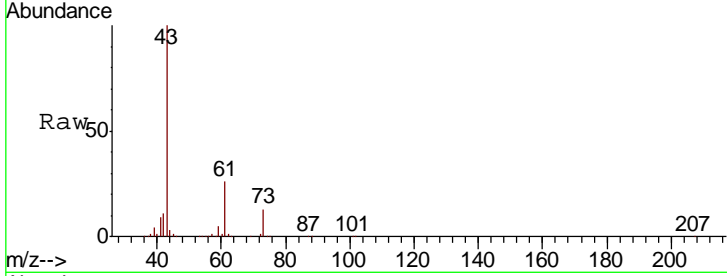




#45
 1,2-Dichloropropane
 Concen: 0.474 ug/l
 RT: 6.70 min Scan# 1719
 Delta R.T. 0.27 min
 Lab File: VU028372.D
 Acq: 28 Nov 2018 17:44

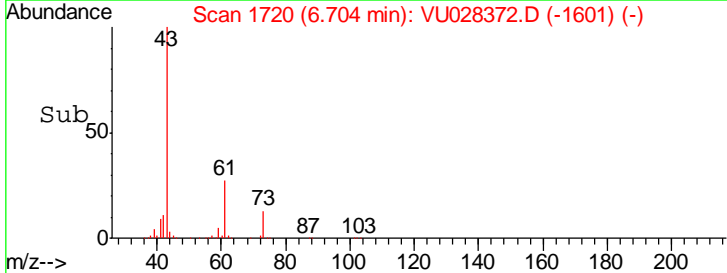
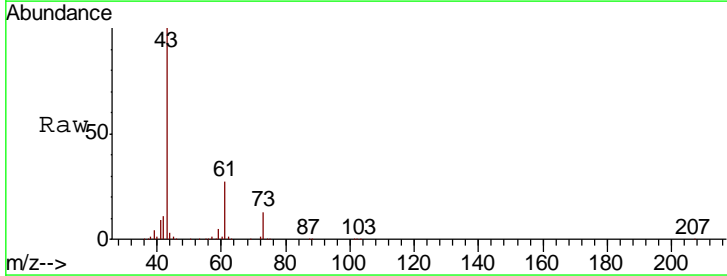
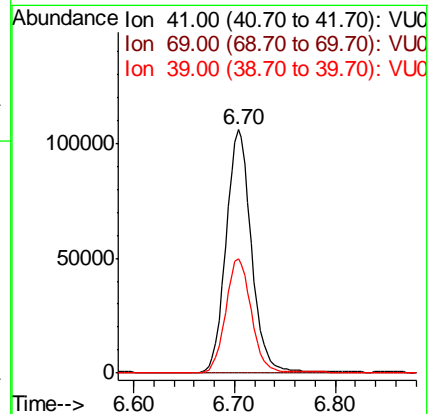
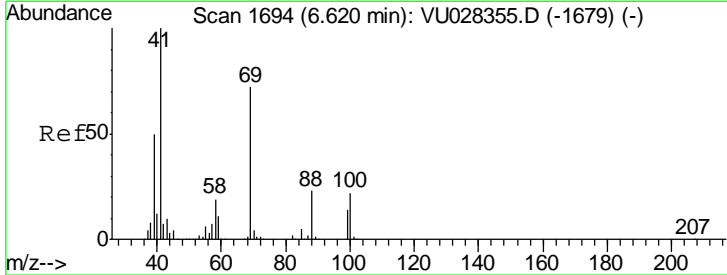
Instrument : MSVOA_U
 ClientSampled : PB115109ZHE#01

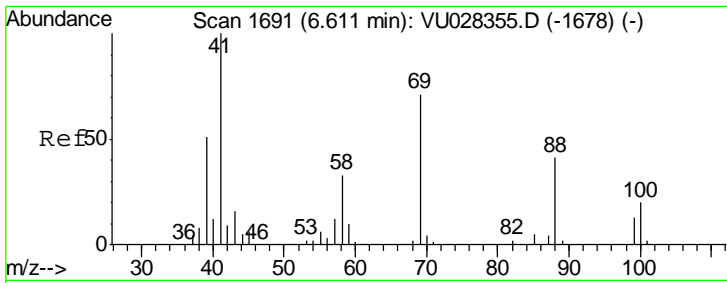
Tgt Ion	Resp	Lower	Upper
63	100		
65	0.0	25.1	37.7#



#48
 Methyl methacrylate
 Concen: 31.511 ug/l
 RT: 6.70 min Scan# 1720
 Delta R.T. 0.08 min
 Lab File: VU028372.D
 Acq: 28 Nov 2018 17:44

Tgt Ion	Resp	Lower	Upper
41	100		
69	0.1	59.0	88.4#
39	47.7	40.5	60.7

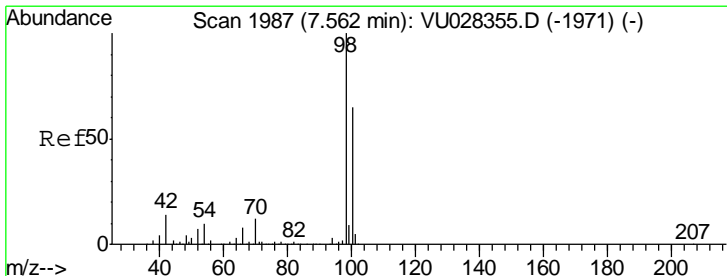
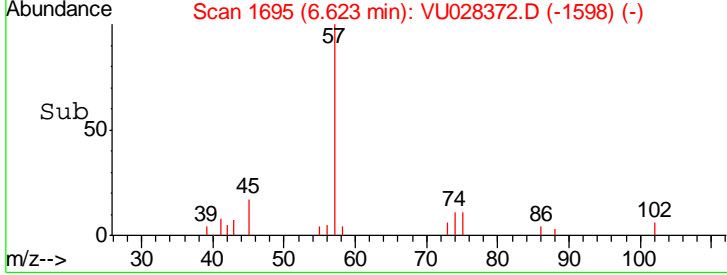
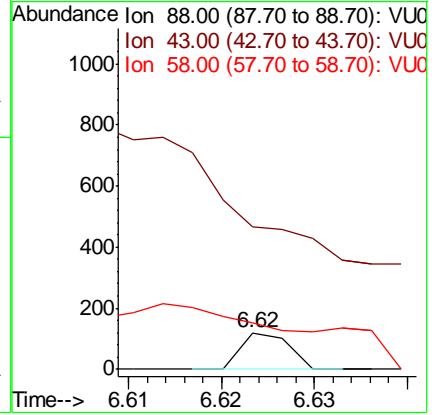
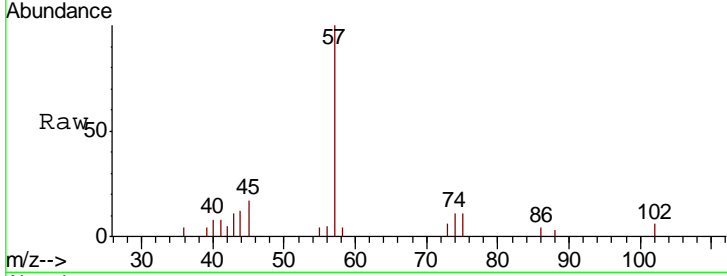




#49
 1,4-Dioxane
 Concen: 0.447 ug/l
 RT: 6.62 min Scan# 1695
 Delta R.T. 0.01 min
 Lab File: VU028372.D
 Acq: 28 Nov 2018 17:44

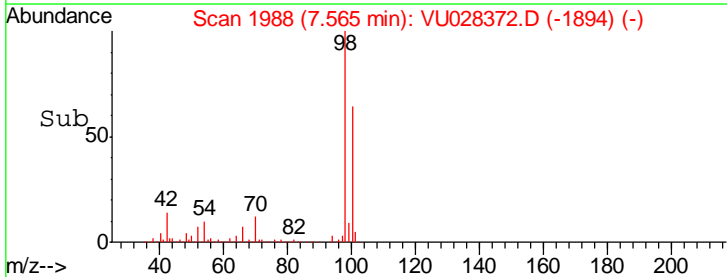
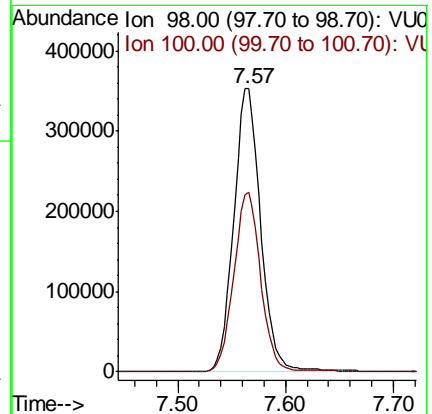
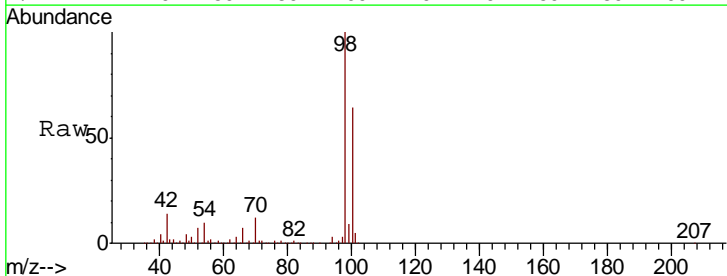
Instrument : MSVOA_U
 ClientSampled : PB115109ZHE#01

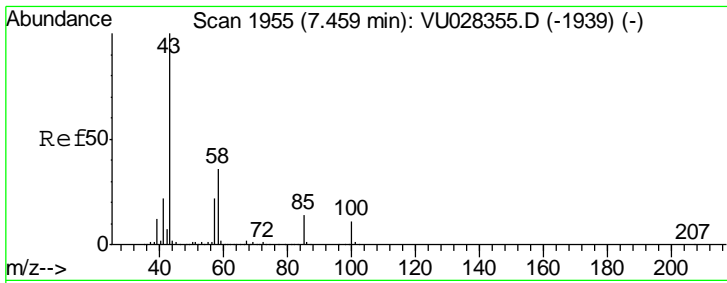
Tgt Ion	Resp	Lower	Upper
88	100		
43	0.0	32.6	48.8#
58	0.0	68.7	103.1#



#50
 Toluene-d8
 Concen: 48.440 ug/l
 RT: 7.57 min Scan# 1988
 Delta R.T. 0.00 min
 Lab File: VU028372.D
 Acq: 28 Nov 2018 17:44

Tgt Ion	Resp	Lower	Upper
98	100		
100	63.4	50.8	76.2

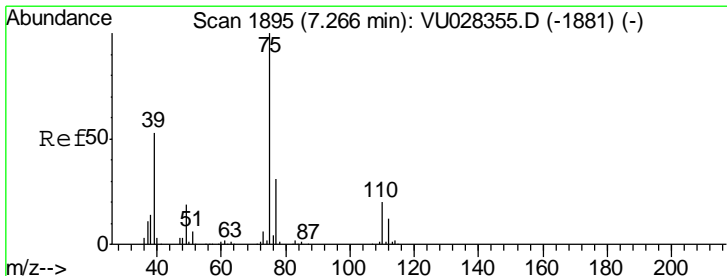
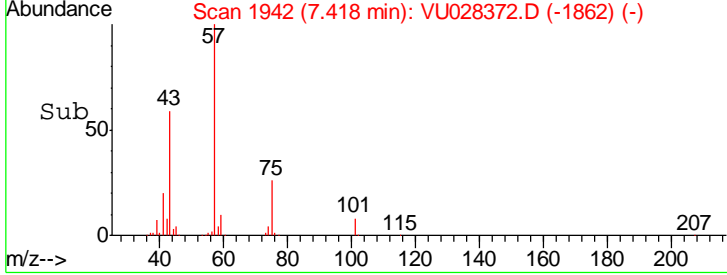
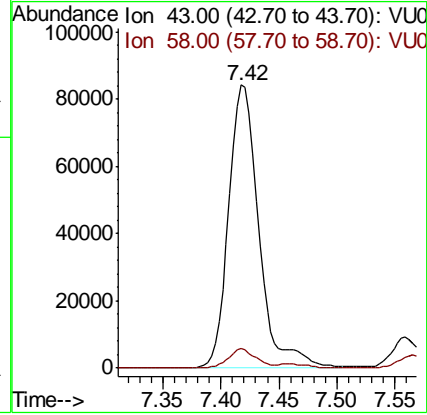
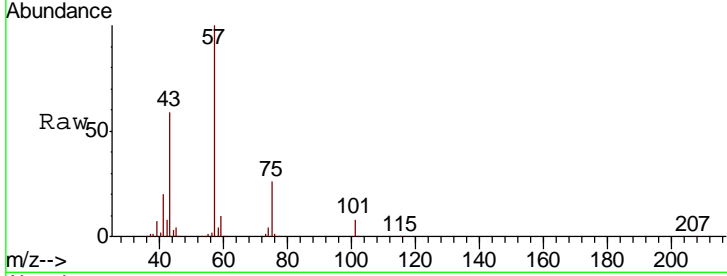




#51
 4-Methyl-2-Pentanone
 Concen: 20.947 ug/l
 RT: 7.42 min Scan# 1942
 Delta R.T. -0.04 min
 Lab File: VU028372.D
 Acq: 28 Nov 2018 17:44

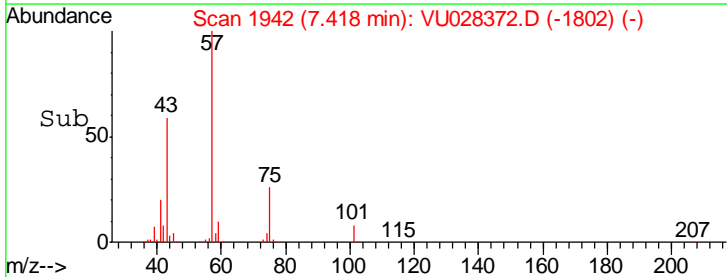
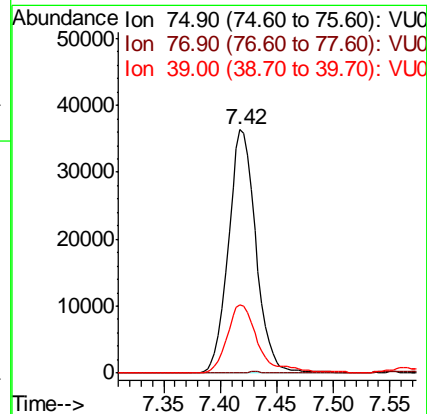
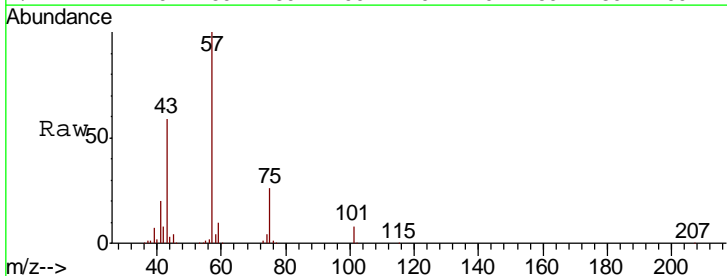
Instrument : MSVOA_U
 ClientSampleId : PB115109ZHE#01

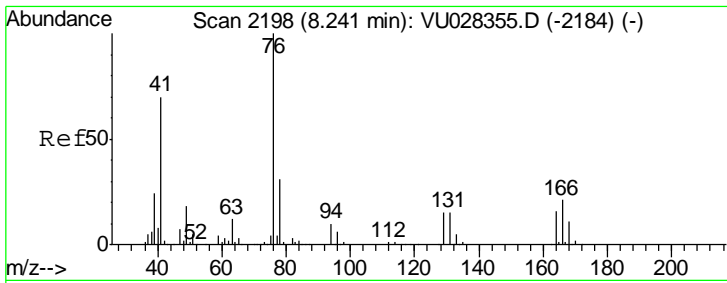
Tgt Ion	Resp	Lower	Upper
43	100		
58	6.1	28.8	43.2#



#54
 cis-1,3-Dichloropropene
 Concen: 9.266 ug/l
 RT: 7.42 min Scan# 1942
 Delta R.T. 0.15 min
 Lab File: VU028372.D
 Acq: 28 Nov 2018 17:44

Tgt Ion	Resp	Lower	Upper
75	100		
77	0.4	24.9	37.3#
39	28.3	42.6	64.0#

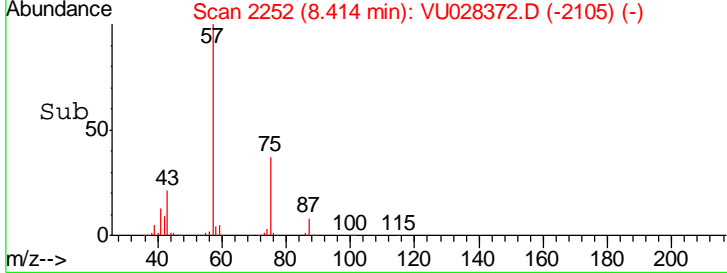
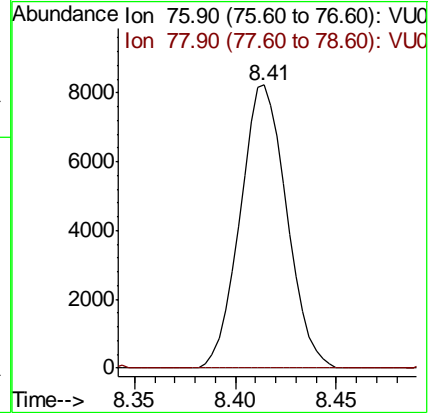
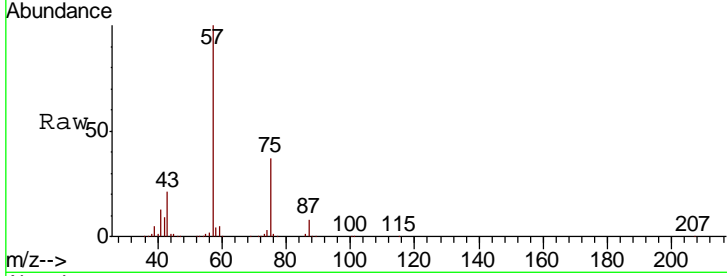




#57
 1,3-Dichloropropane
 Concen: 1.952 ug/l
 RT: 8.41 min Scan# 2252
 Delta R.T. 0.17 min
 Lab File: VU028372.D
 Acq: 28 Nov 2018 17:44

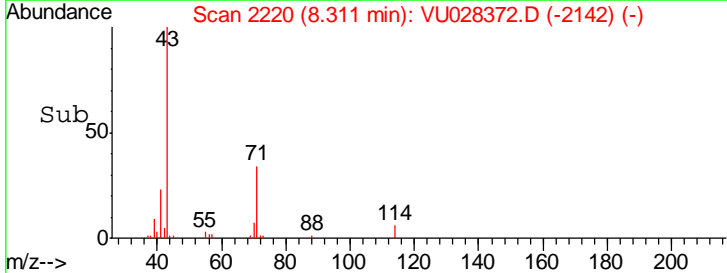
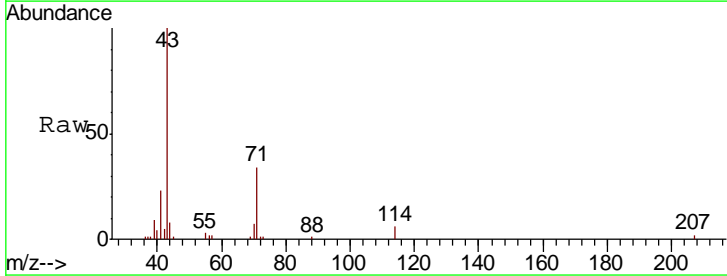
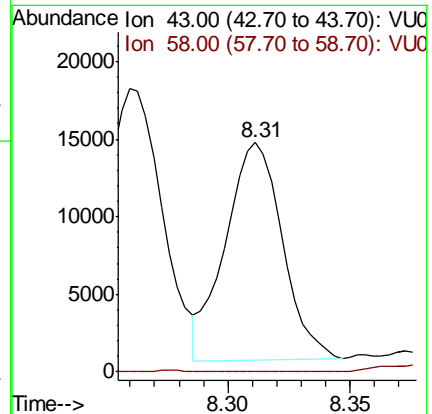
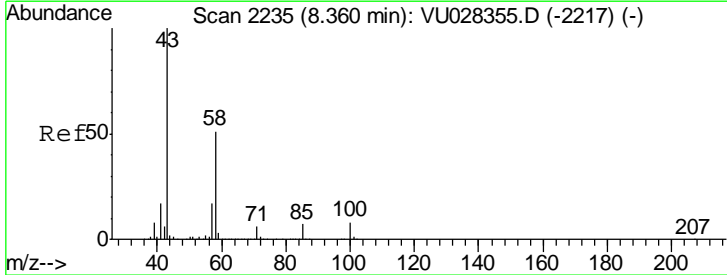
Instrument : MSVOA_U
 ClientSampleId : PB115109ZHE#01

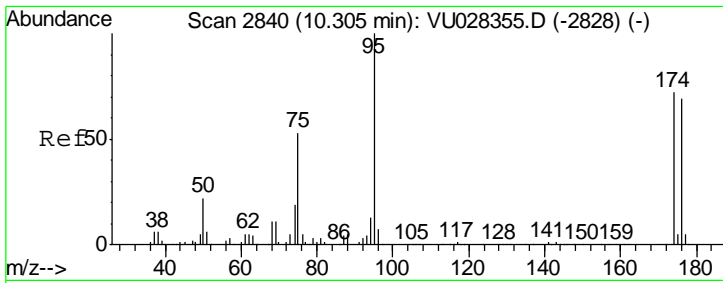
Tgt Ion: 76 Resp: 13286
 Ion Ratio Lower Upper
 76 100
 78 0.0 25.4 38.0#



#59
 2-Hexanone
 Concen: 4.086 ug/l
 RT: 8.31 min Scan# 2220
 Delta R.T. -0.05 min
 Lab File: VU028372.D
 Acq: 28 Nov 2018 17:44

Tgt Ion: 43 Resp: 22831
 Ion Ratio Lower Upper
 43 100
 58 0.0 25.5 76.5#

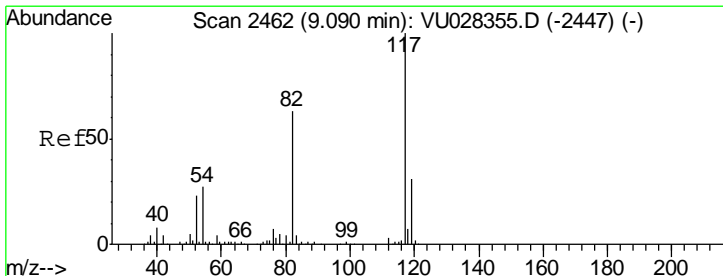
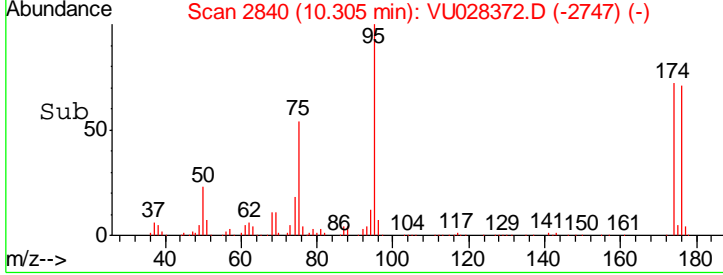
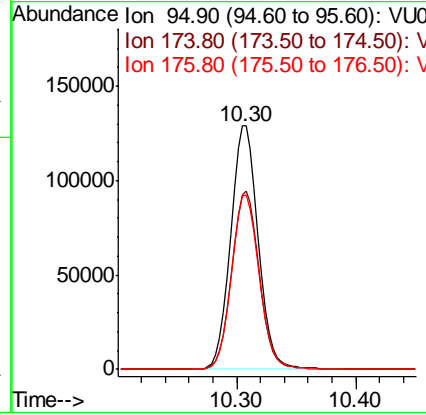
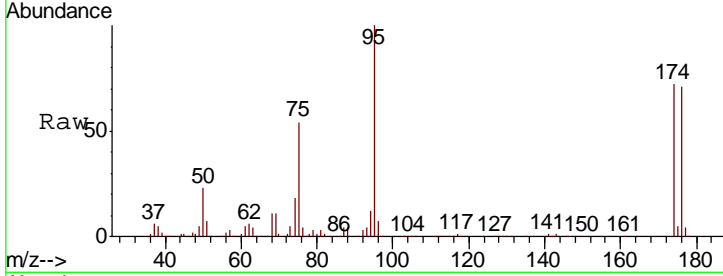




#62
 4-Bromofluorobenzene
 Concen: 45.116 ug/l
 RT: 10.30 min Scan# 2840
 Delta R.T. -0.00 min
 Lab File: VU028372.D
 Acq: 28 Nov 2018 17:44

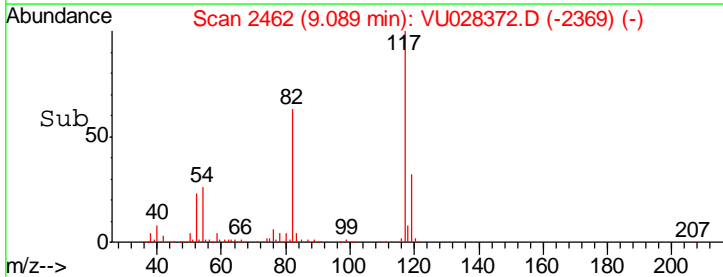
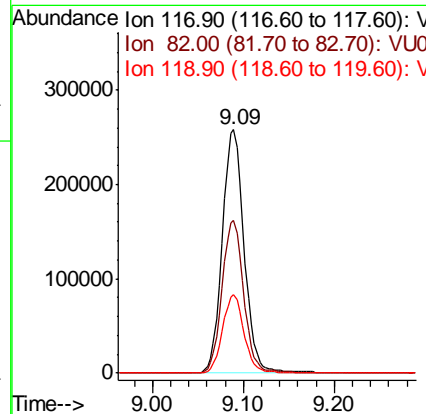
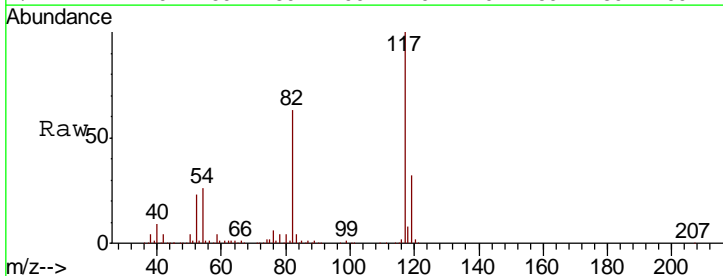
Instrument : MSVOA_U
 ClientSampled : PB115109ZHE#01

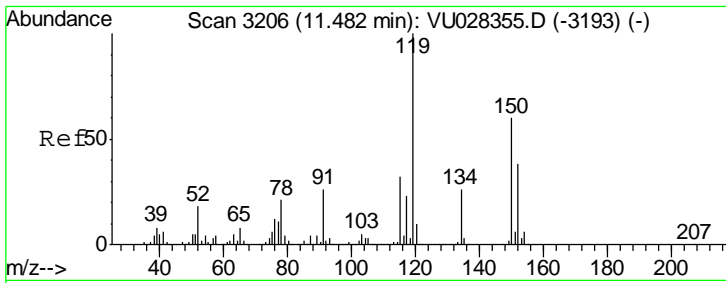
Tgt Ion	Resp	Lower	Upper
95	206669		
174	72.7	0.0	145.4
176	71.8	0.0	140.8



#63
 Chlorobenzene-d5
 Concen: 50.000 ug/l
 RT: 9.09 min Scan# 2462
 Delta R.T. -0.00 min
 Lab File: VU028372.D
 Acq: 28 Nov 2018 17:44

Tgt Ion	Resp	Lower	Upper
117	431723		
82	62.5	50.3	75.5
119	32.4	24.8	37.2

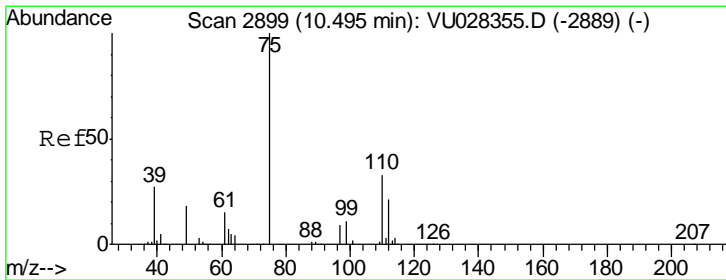
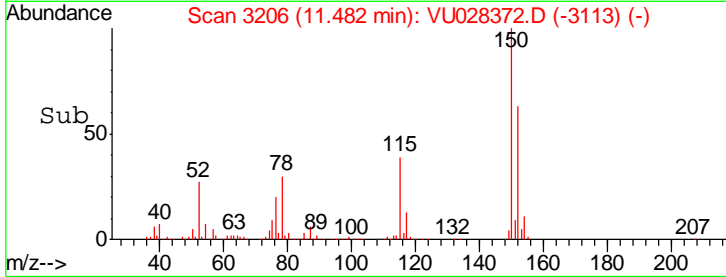
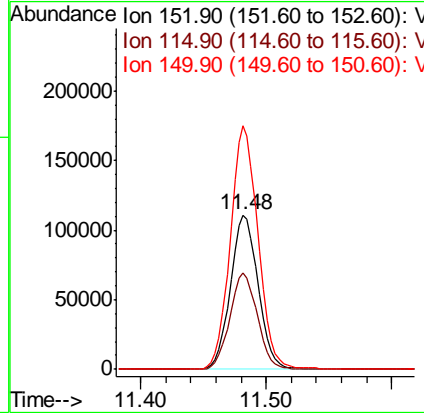
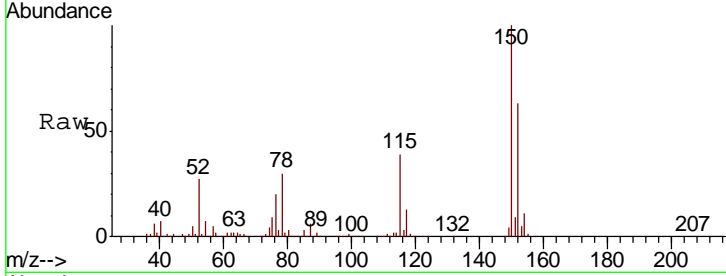




#72
 1,4-Dichlorobenzene-d4
 Concen: 50.000 ug/l
 RT: 11.48 min Scan# 3206
 Delta R.T. -0.00 min
 Lab File: VU028372.D
 Acq: 28 Nov 2018 17:44

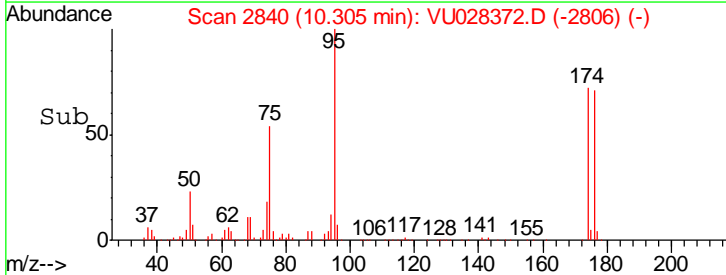
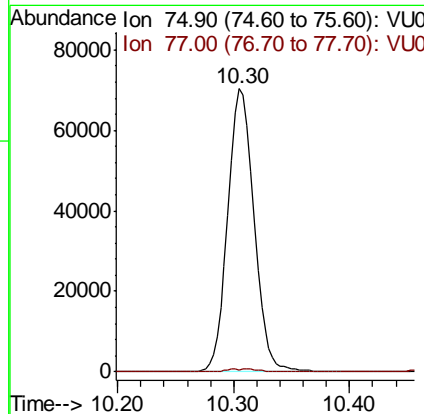
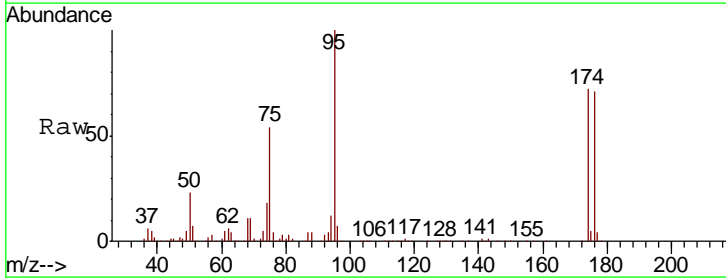
Instrument : MSVOA_U
 ClientSampleId : PB115109ZHE#01

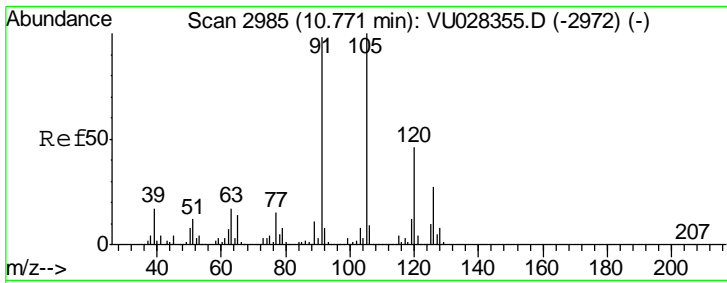
Tgt Ion	Resp	Lower	Upper
152	100		
115	61.8	45.0	134.8
150	156.9	0.0	349.2



#76
 1,2,3-Trichloropropane
 Concen: 23.360 ug/l
 RT: 10.30 min Scan# 2840
 Delta R.T. -0.19 min
 Lab File: VU028372.D
 Acq: 28 Nov 2018 17:44

Tgt Ion	Resp	Lower	Upper
75	100		
77	1.2	22.4	67.0#

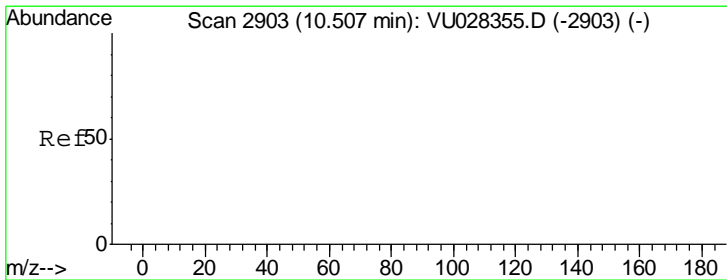
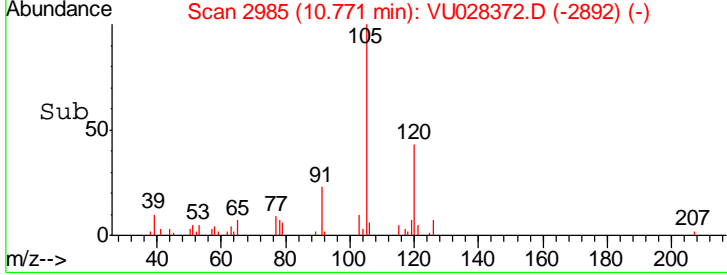
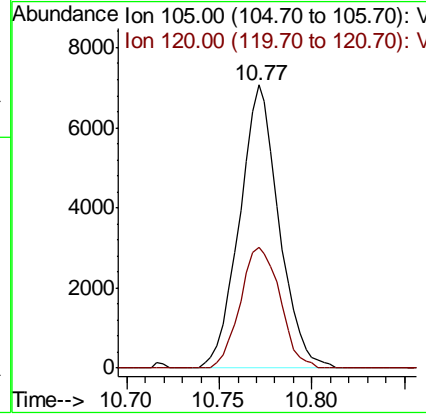
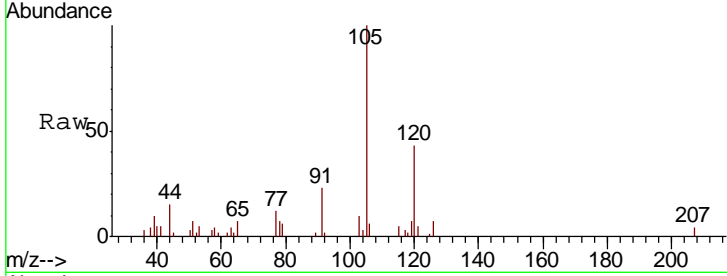




#80
 1,3,5-Trimethylbenzene
 Concen: 0.933 ug/l
 RT: 10.77 min Scan# 2985
 Delta R.T. -0.00 min
 Lab File: VU028372.D
 Acq: 28 Nov 2018 17:44

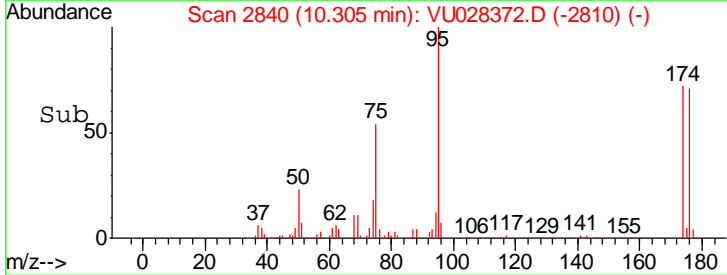
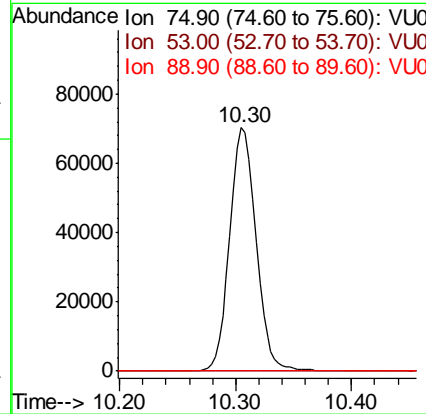
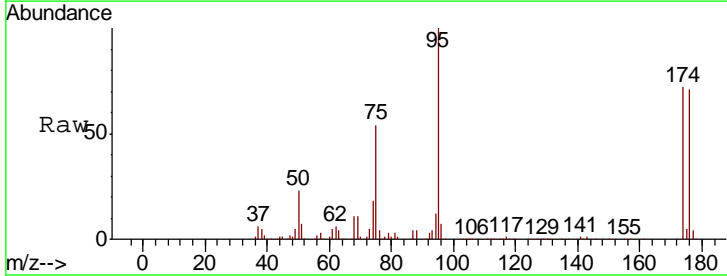
Instrument : MSVOA_U
 ClientSampleId : PB115109ZHE#01

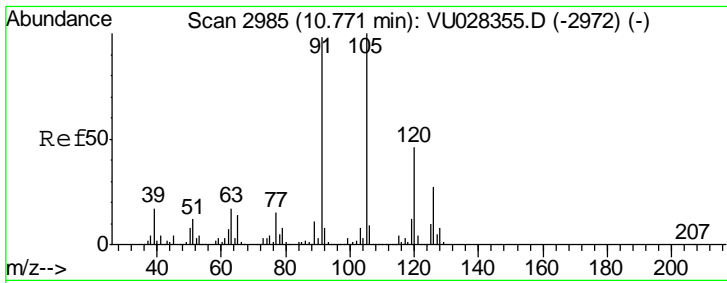
Tgt Ion: 105 Resp: 10443
 Ion Ratio Lower Upper
 105 100
 120 43.1 23.4 70.0



#81
 trans-1,4-Dichloro-2-butene
 Concen: 62.008 ug/l
 RT: 10.30 min Scan# 2840
 Delta R.T. -0.20 min
 Lab File: VU028372.D
 Acq: 28 Nov 2018 17:44

Tgt Ion: 75 Resp: 110601
 Ion Ratio Lower Upper
 75 100
 53 0.0 0.0 0.0
 89 0.0 0.0 0.0

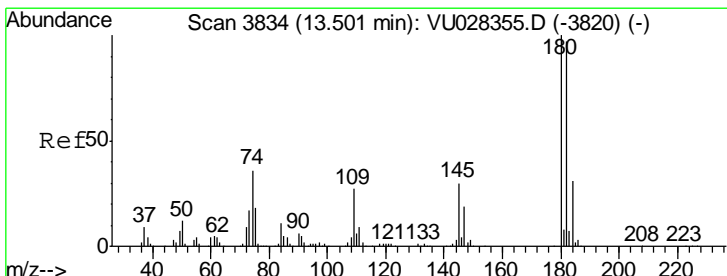
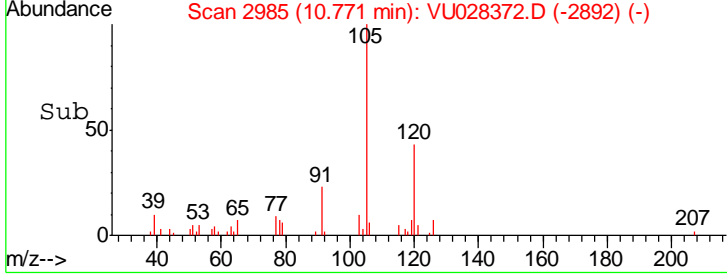
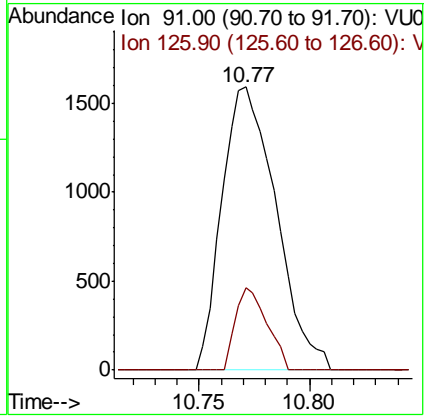
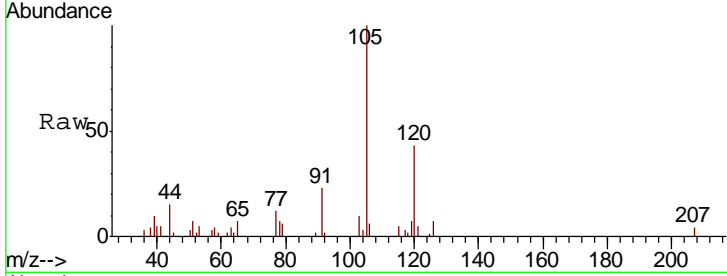




#82
 4-Chlorotoluene
 Concen: 0.244 ug/l
 RT: 10.77 min Scan# 2985
 Delta R.T. -0.00 min
 Lab File: VU028372.D
 Acq: 28 Nov 2018 17:44

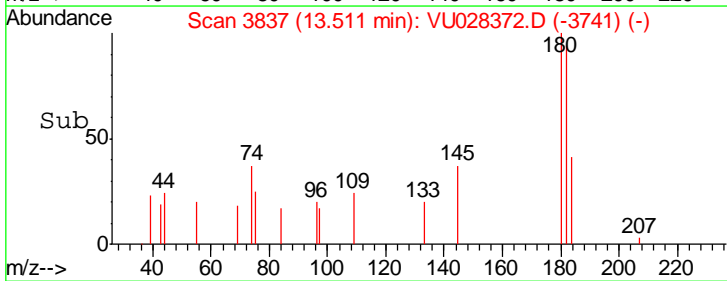
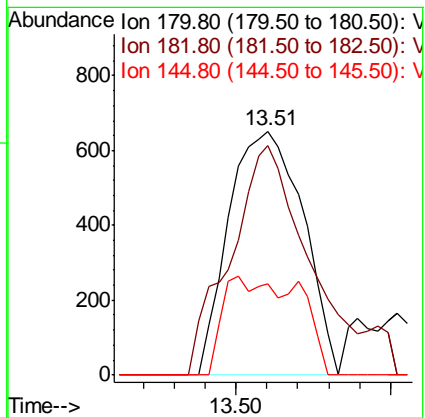
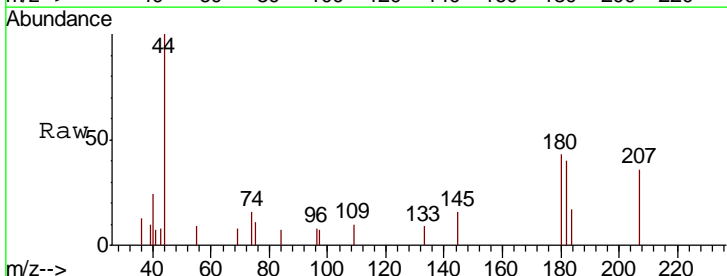
Instrument : MSVOA_U
 ClientSampled : PB115109ZHE#01

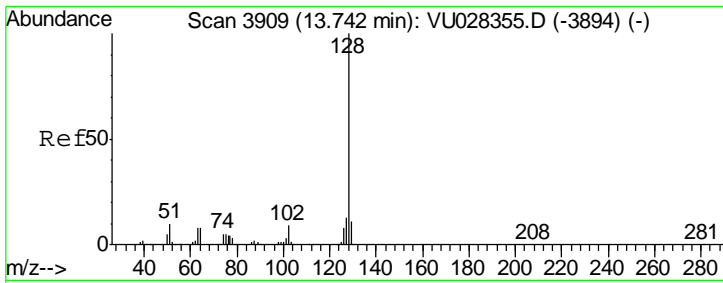
Tgt Ion	Resp	Lower	Upper
91	2711		
91	100		
126	17.0	13.9	41.6



#93
 1,2,4-Trichlorobenzene
 Concen: 0.292 ug/l
 RT: 13.51 min Scan# 3837
 Delta R.T. 0.01 min
 Lab File: VU028372.D
 Acq: 28 Nov 2018 17:44

Tgt Ion	Resp	Lower	Upper
180	1089		
180	100		
182	97.6	48.3	144.9
145	27.6	15.2	45.5

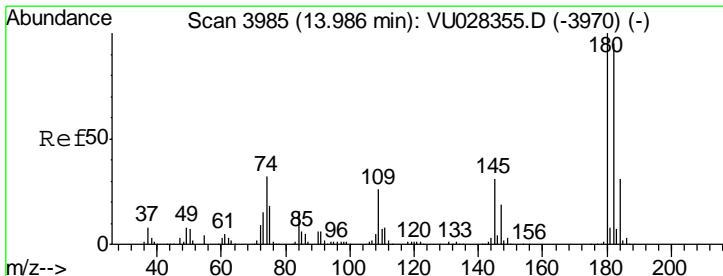
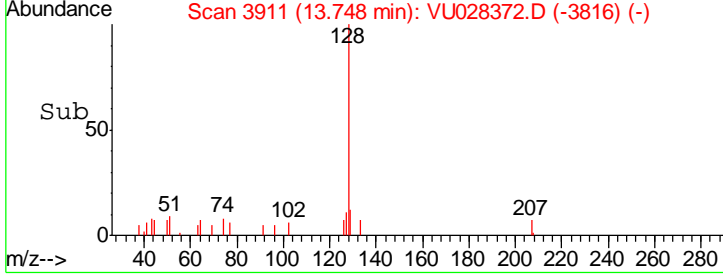
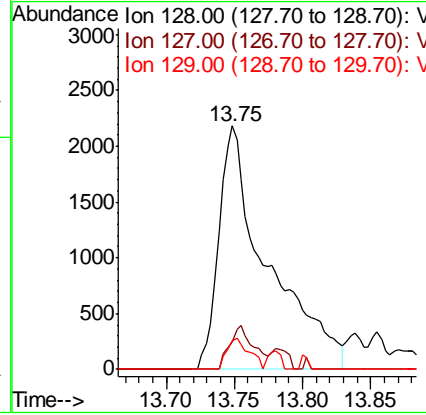
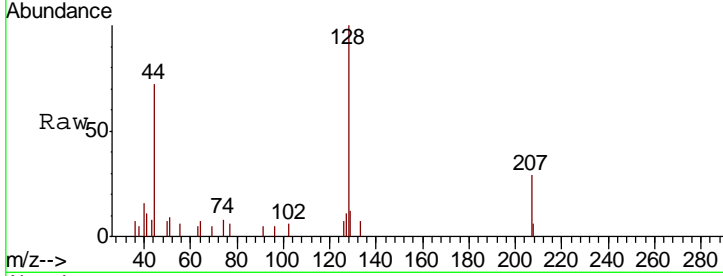




#95
 Naphthalene
 Concen: 3.189 ug/l
 RT: 13.75 min Scan# 3911
 Delta R.T. 0.01 min
 Lab File: VU028372.D
 Acq: 28 Nov 2018 17:44

Instrument : MSVOA_U
 ClientSampleId : PB115109ZHE#01

Tgt Ion	Resp	Lower	Upper
128	5391		
127	9.0	10.6	15.8#
129	5.8	8.6	12.8#



#96
 1,2,3-Trichlorobenzene
 Concen: 0.371 ug/l
 RT: 13.99 min Scan# 3987
 Delta R.T. 0.01 min
 Lab File: VU028372.D
 Acq: 28 Nov 2018 17:44

Tgt Ion	Resp	Lower	Upper
180	1397		
182	115.0	47.7	143.1
145	31.1	15.7	47.1

