

Data Path : Z:\VOASRV\HPCHEM1\MSVOA U\DATA\VU112918\
 Data File : VU028404.D
 Acq On : 29 Nov 2018 19:16
 Operator : MD/SY
 Sample : J6134-06
 Misc : 5.0mL/MSVOA U/WATER
 ALS Vial : 26 Sample Multiplier: 1

Instrument :
 MSVOA_U
 ClientSampled :
 MW-11

Quant Time: Nov 30 07:06:21 2018
 Quant Method : Z:\VOASRV\HPCHEM1\MSVOA_U\METHOD\82U112818W.M
 Quant Title : SW846 8260
 QLast Update : Thu Nov 29 01:04:49 2018
 Response via : Initial Calibration

Internal Standards	R.T.	QIon	Response	Conc	Units	Dev(Min)
1) Pentafluorobenzene	4.98	168	255683	50.00	ug/l	0.00
34) 1,4-Difluorobenzene	5.89	114	488059	50.00	ug/l	0.00
63) Chlorobenzene-d5	9.09	117	466089	50.00	ug/l	0.00
72) 1,4-Dichlorobenzene-d4	11.48	152	225805	50.00	ug/l	0.00

System Monitoring Compounds

33) 1,2-Dichloroethane-d4	5.31	65	226018	52.89	ug/l	0.00
Spiked Amount	50.000		Recovery	=	105.78%	
35) Dibromofluoromethane	4.88	113	163189	50.28	ug/l	0.00
Spiked Amount	50.000		Recovery	=	100.56%	
50) Toluene-d8	7.57	98	649874	50.07	ug/l	0.00
Spiked Amount	50.000		Recovery	=	100.14%	
62) 4-Bromofluorobenzene	10.31	95	248121	53.04	ug/l	0.00
Spiked Amount	50.000		Recovery	=	106.08%	

Target Compounds

						Qvalue
3) Chloromethane	1.33	50	1494	0.225	ug/l #	77
4) Vinyl Chloride	1.40	62	34839	7.490	ug/l	97
6) Chloroethane	1.50	64	53366	19.938	ug/l #	53
11) Tert butyl alcohol	2.83	59	2059	2.121	ug/l #	89
16) Acetone	2.32	43	18545	7.095	ug/l	98
17) Carbon Disulfide	2.48	76	6444	0.615	ug/l	95
20) Methylene Chloride	2.70	84	2103	0.497	ug/l #	87
21) trans-1,2-Dichloroethene	2.98	96	6577	2.076	ug/l	82
25) 2-Butanone	4.30	43	2658	0.710	ug/l	96
27) cis-1,2-Dichloroethene	4.23	96	737662	196.900	ug/l	88
31) Cyclohexane	4.98	56	11699	1.269	ug/l #	30
36) 1,1-Dichloropropene	4.98	75	23799	4.456	ug/l #	51
38) Carbon Tetrachloride	4.98	117	25286	5.766	ug/l #	16
39) Methylcyclohexane	6.42	83	5048	0.802	ug/l	88
40) Benzene	5.39	78	18233	1.153	ug/l	95
44) Trichloroethene	6.18	130	1646	0.485	ug/l	95
51) 4-Methyl-2-Pentanone	7.46	43	2234	0.303	ug/l #	80
52) Toluene	7.64	92	311873	34.239	ug/l	98
55) 1,1,2-Trichloroethane	8.04	97	1691	0.446	ug/l #	18
59) 2-Hexanone	8.17	43	2411	0.423	ug/l	81
60) Dibromochloromethane	8.23	129	1404	0.389	ug/l #	10
64) Tetrachloroethene	8.23	164	1447	0.472	ug/l	96
67) Ethyl Benzene	9.25	91	121594	6.671	ug/l	99
68) m/p-Xylenes	9.37	106	290329	44.252	ug/l	99
69) o-Xylene	9.78	106	196270	30.093	ug/l	99
70) Styrene	9.78	104	9776	0.929	ug/l #	1
73) Isopropylbenzene	10.17	105	11553	0.658	ug/l	95
74) N-amyl acetate	10.05	43	2817	0.256	ug/l #	1
76) 1,2,3-Trichloropropane	10.68	75	4060	0.648	ug/l #	1
78) n-propylbenzene	10.59	91	32025	1.478	ug/l	100
79) 2-Chlorotoluene	10.68	91	57030	4.465	ug/l #	44
80) 1,3,5-Trimethylbenzene	10.77	105	344087	23.250	ug/l	100
81) trans-1,4-Dichloro-2-buten	10.68	75	4060	1.721	ug/l #	100
82) 4-Chlorotoluene	10.77	91	37979	2.581	ug/l #	48

Data Path : Z:\VOASRV\HPCHEM1\MSVOA U\DATA\VU112918\
 Data File : VU028404.D
 Acq On : 29 Nov 2018 19:16
 Operator : MD/SY
 Sample : J6134-06
 Misc : 5.0mL/MSVOA U/WATER
 ALS Vial : 26 Sample Multiplier: 1

Instrument :
 MSVOA_U
 ClientSampleId :
 MW-11

Quant Time: Nov 30 07:06:21 2018
 Quant Method : Z:\VOASRV\HPCHEM1\MSVOA_U\METHOD\82U112818W.M
 Quant Title : SW846 8260
 QLast Update : Thu Nov 29 01:04:49 2018
 Response via : Initial Calibration

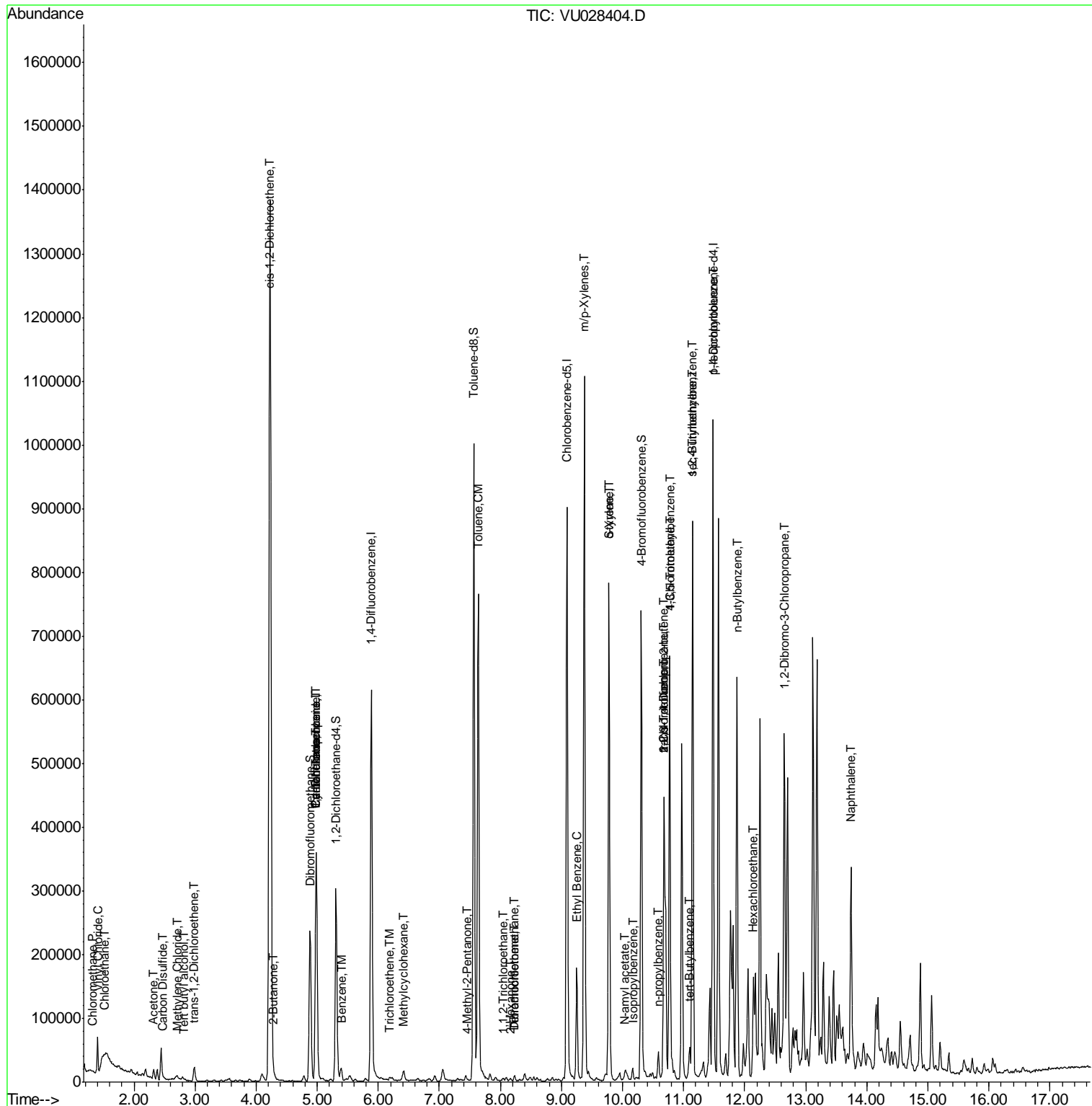
Internal Standards	R.T.	QIon	Response	Conc	Units	Dev(Min)
83) tert-Butylbenzene	11.10	119	19125	1.386	ug/l	88
84) 1,2,4-Trimethylbenzene	11.15	105	461579	30.792	ug/l	99
85) sec-Butylbenzene	11.15	105	461579	25.759	ug/l #	59
86) p-Isopropyltoluene	11.48	119	36462	2.475	ug/l	97
89) n-Butylbenzene	11.87	91	71827	4.940	ug/l #	1
90) Hexachloroethane	12.14	117	8051	3.500	ug/l #	12
92) 1,2-Dibromo-3-Chloropropan	12.65	75	2254	1.403	ug/l #	7
95) Naphthalene	13.74	128	208353	13.177	ug/l	99

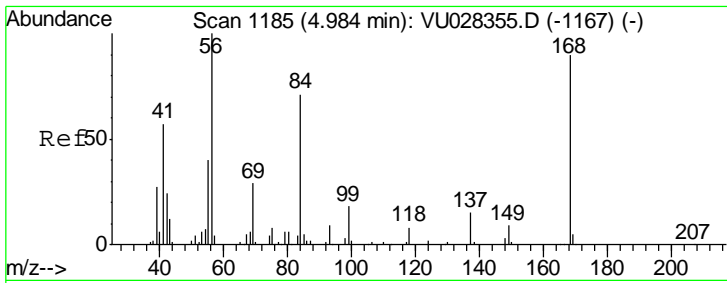
(#) = qualifier out of range (m) = manual integration (+) = signals summed

Data Path : Z:\VOASRV\HPCHEM1\MSVOA U\DATA\VU112918\
 Data File : VU028404.D
 Acq On : 29 Nov 2018 19:16
 Operator : MD/SY
 Sample : J6134-06
 Misc : 5.0mL/MSVOA U/WATER
 ALS Vial : 26 Sample Multiplier: 1

Instrument :
 MSVOA_U
 ClientSampled :
 MW-11

Quant Time: Nov 30 07:06:21 2018
 Quant Method : Z:\VOASRV\HPCHEM1\MSVOA_U\METHOD\82U112818W.M
 Quant Title : SW846 8260
 QLast Update : Thu Nov 29 01:04:49 2018
 Response via : Initial Calibration

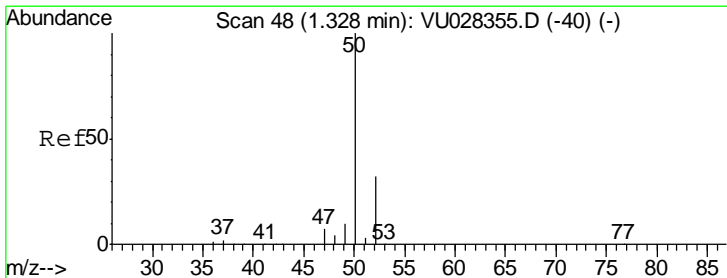
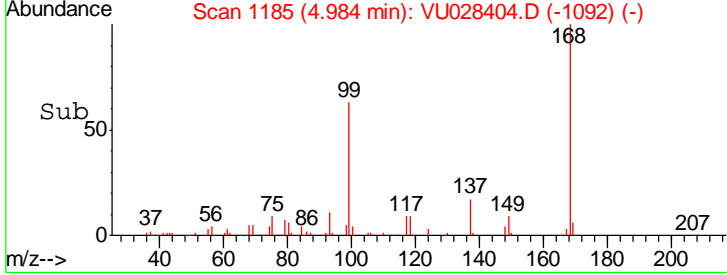
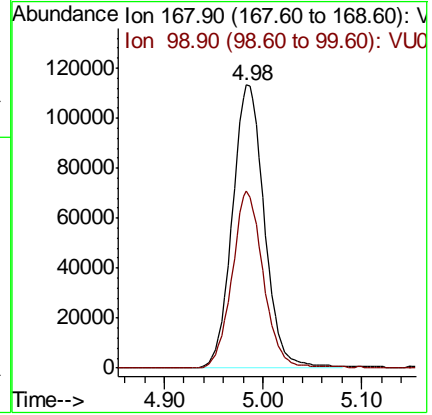
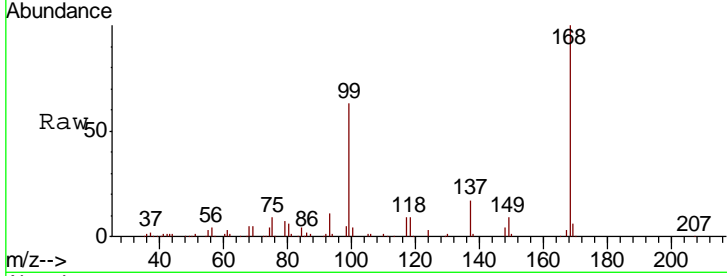




#1
 Pentafluorobenzene
 Concen: 50.000 ug/l
 RT: 4.98 min Scan# 1185
 Delta R.T. -0.00 min
 Lab File: VU028404.D
 Acq: 29 Nov 2018 19:16

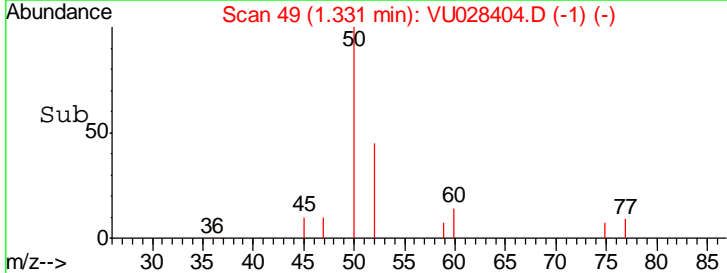
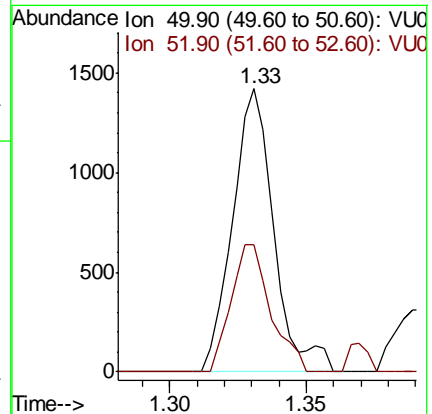
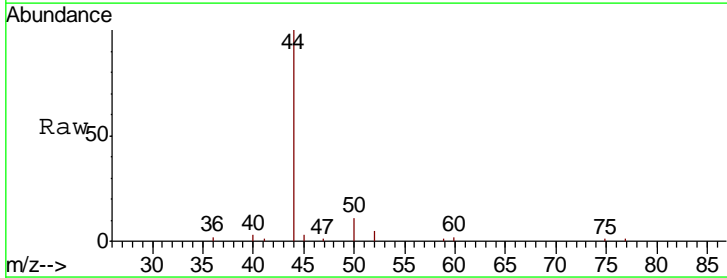
Instrument :
 MSVOA_U
 ClientSampled :
 MW-11

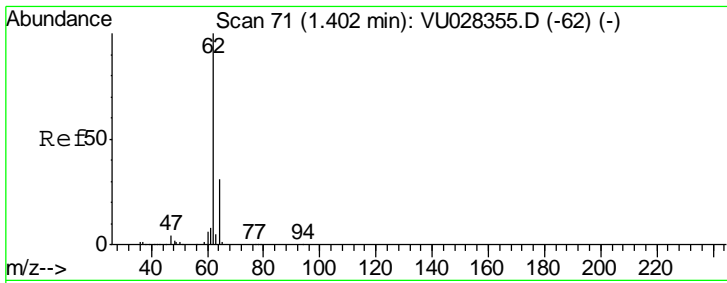
Tgt Ion: 168 Resp: 255683
 Ion Ratio Lower Upper
 168 100
 99 62.8 49.6 74.4



#3
 Chloromethane
 Concen: 0.225 ug/l
 RT: 1.33 min Scan# 49
 Delta R.T. 0.00 min
 Lab File: VU028404.D
 Acq: 29 Nov 2018 19:16

Tgt Ion: 50 Resp: 1494
 Ion Ratio Lower Upper
 50 100
 52 44.8 25.4 38.2#

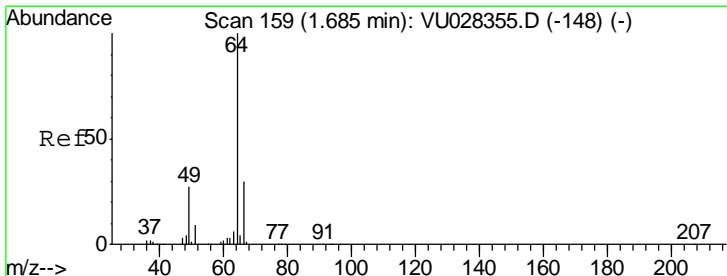
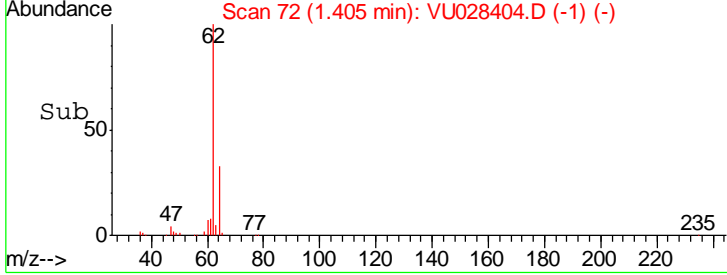
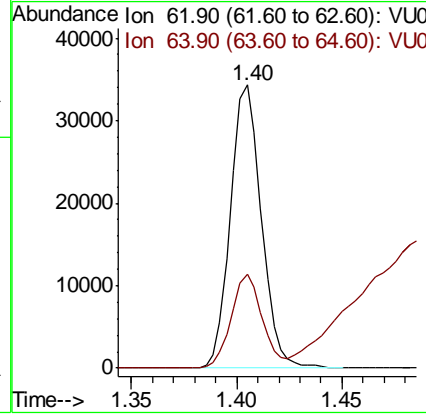
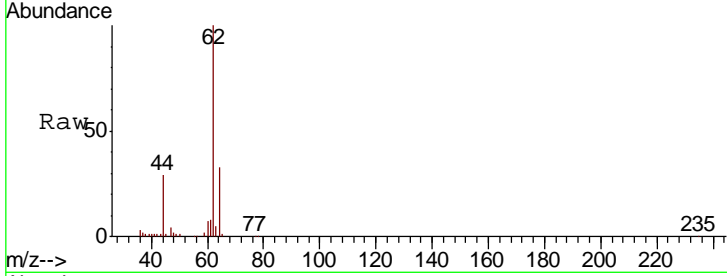




#4
 Vinyl Chloride
 Concen: 7.490 ug/l
 RT: 1.40 min Scan# 72
 Delta R.T. 0.00 min
 Lab File: VU028404.D
 Acq: 29 Nov 2018 19:16

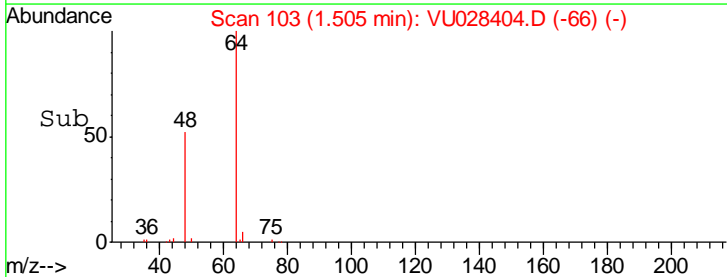
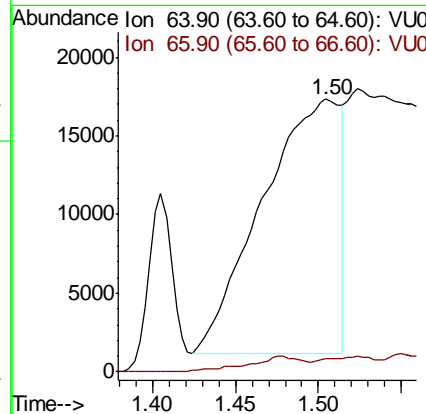
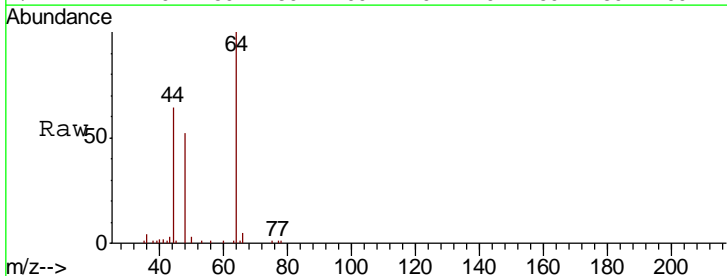
Instrument : MSVOA_U
 ClientSampled : VU028404.D
 MW-11

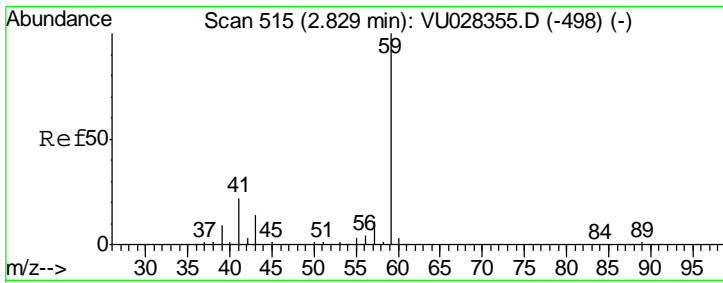
Tgt Ion	Resp	Lower	Upper
62	34839		
64	100	25.0	37.4



#6
 Chloroethane
 Concen: 19.938 ug/l
 RT: 1.50 min Scan# 103
 Delta R.T. -0.18 min
 Lab File: VU028404.D
 Acq: 29 Nov 2018 19:16

Tgt Ion	Resp	Lower	Upper
64	53366		
66	100	23.6	35.4#

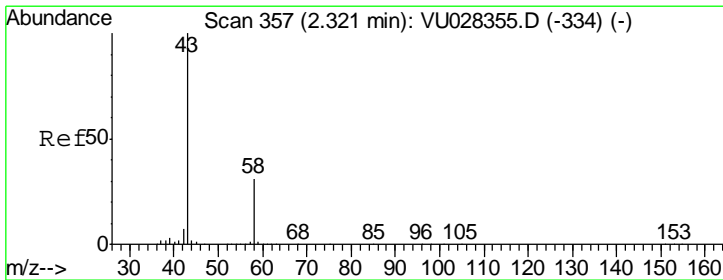
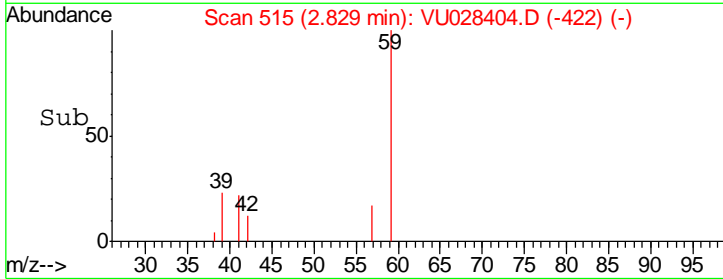
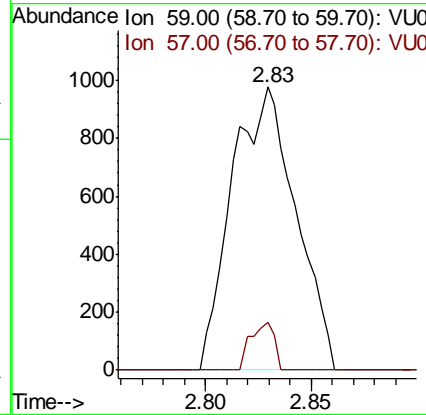
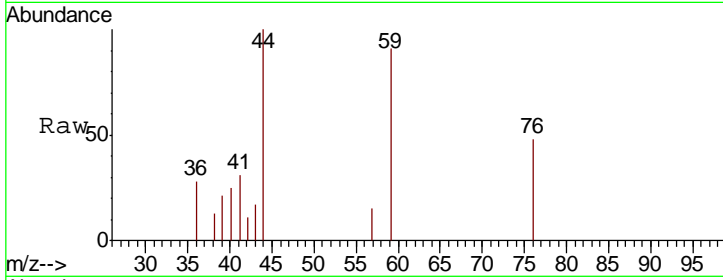




#11
 Tert butyl alcohol
 Concen: 2.121 ug/l
 RT: 2.83 min Scan# 515
 Delta R.T. -0.00 min
 Lab File: VU028404.D
 Acq: 29 Nov 2018 19:16

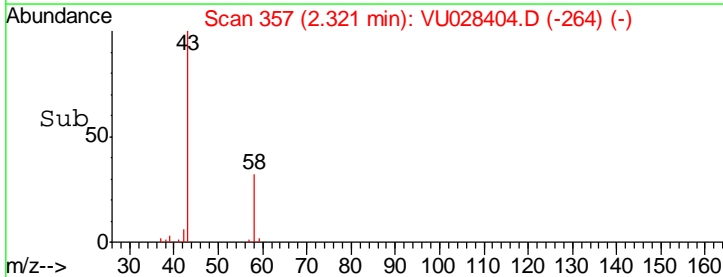
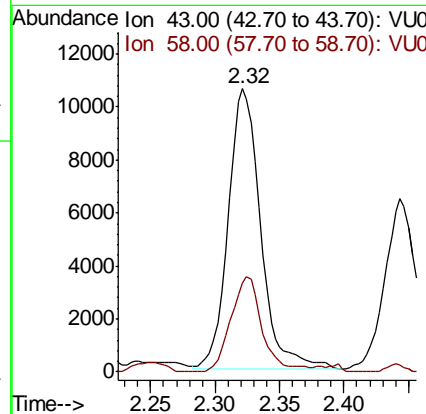
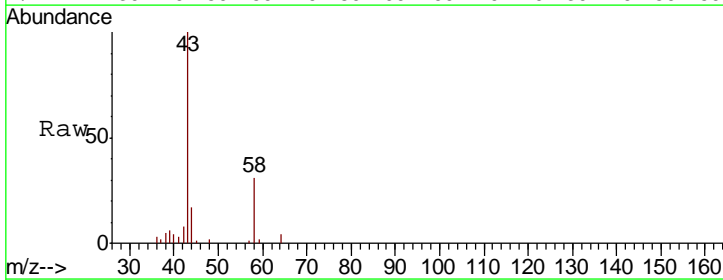
Instrument :
 MSVOA_U
 ClientSampled :
 MW-11

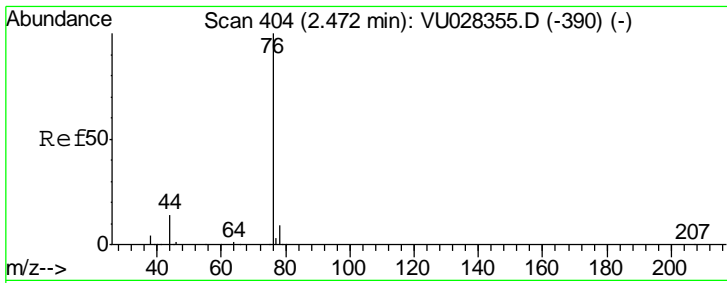
Tgt Ion	Resp	Lower	Upper
59	100		
57	6.2	8.3	12.5#



#16
 Acetone
 Concen: 7.095 ug/l
 RT: 2.32 min Scan# 357
 Delta R.T. -0.00 min
 Lab File: VU028404.D
 Acq: 29 Nov 2018 19:16

Tgt Ion	Resp	Lower	Upper
43	100		
58	31.5	24.4	36.6



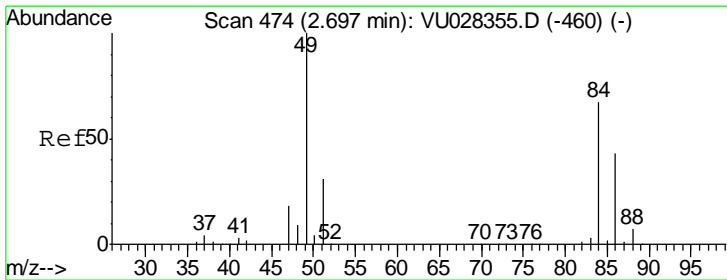
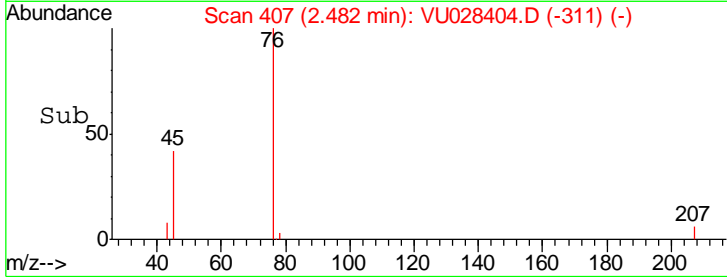
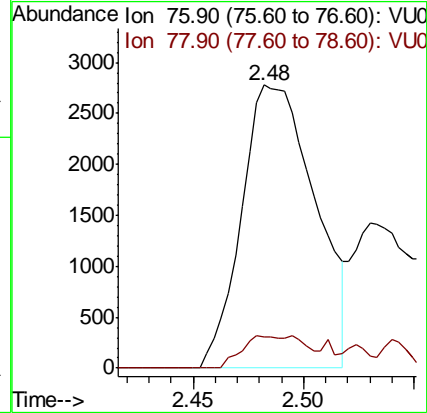
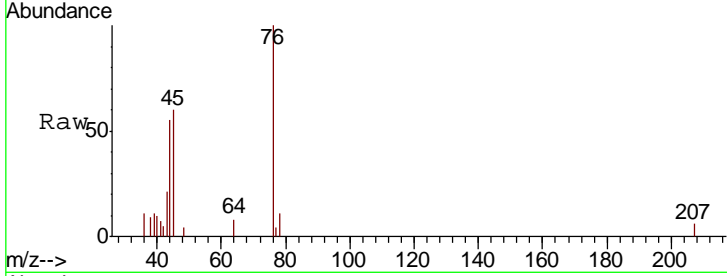


#17
 Carbon Disulfide
 Concen: 0.615 ug/l
 RT: 2.48 min Scan# 407
 Delta R.T. 0.01 min
 Lab File: VU028404.D
 Acq: 29 Nov 2018 19:16

Instrument :
 MSVOA_U
 ClientSampled :
 MW-11

Tgt Ion: 76 Resp: 6444

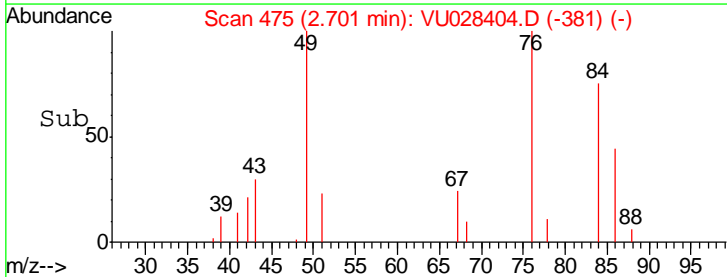
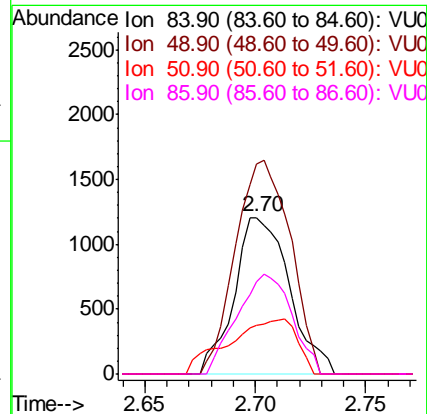
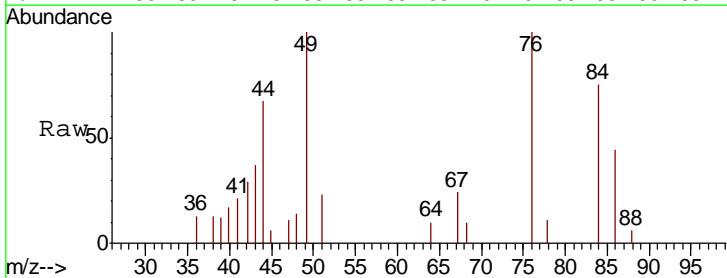
Ion	Ratio	Lower	Upper
76	100		
78	11.1	7.4	11.2

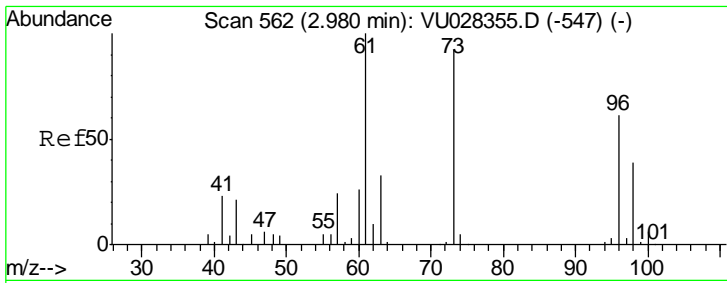


#20
 Methylene Chloride
 Concen: 0.497 ug/l
 RT: 2.70 min Scan# 475
 Delta R.T. 0.00 min
 Lab File: VU028404.D
 Acq: 29 Nov 2018 19:16

Tgt Ion: 84 Resp: 2103

Ion	Ratio	Lower	Upper
84	100		
49	133.6	120.0	180.0
51	30.9	36.9	55.3#
86	59.1	51.1	76.7

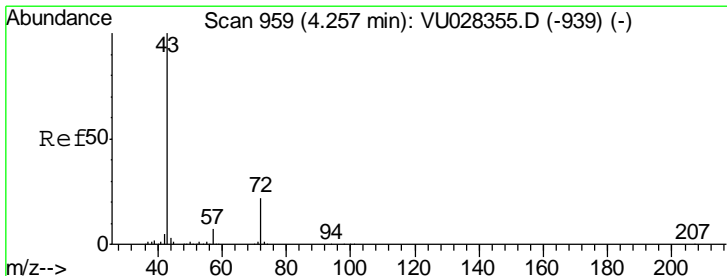
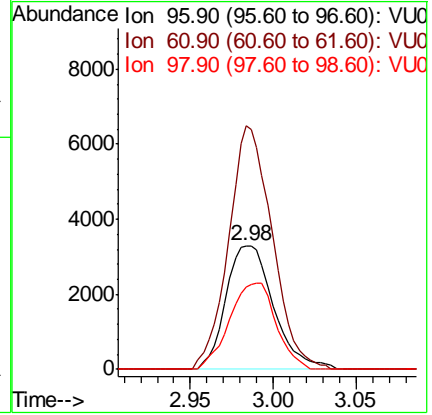
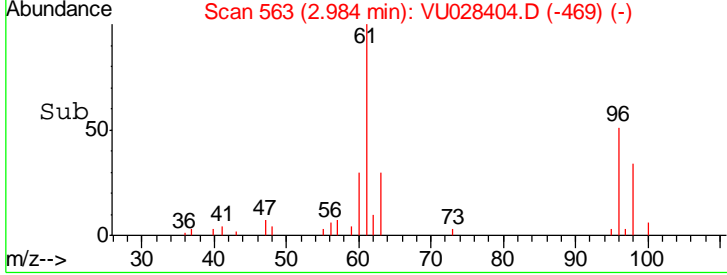
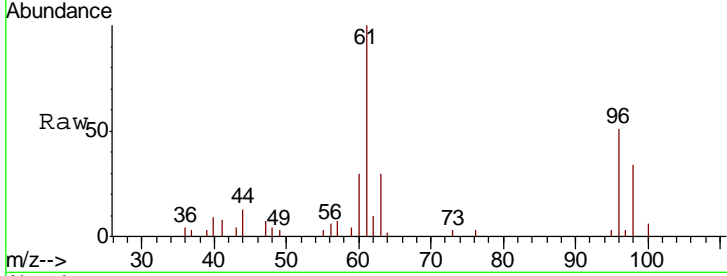




#21
 trans-1,2-Dichloroethene
 Concen: 2.076 ug/l
 RT: 2.98 min Scan# 563
 Delta R.T. 0.00 min
 Lab File: VU028404.D
 Acq: 29 Nov 2018 19:16

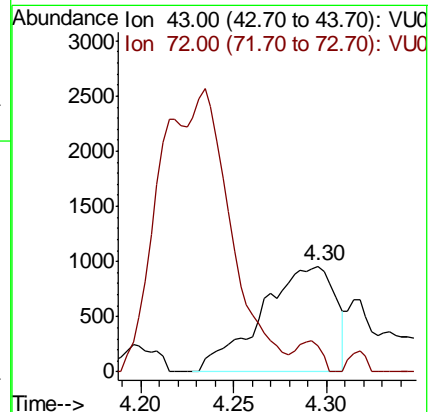
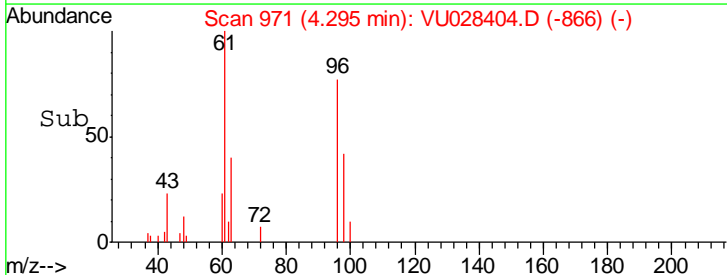
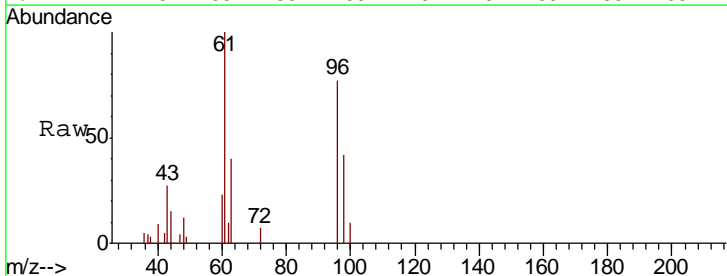
Instrument :
 MSVOA_U
 ClientSampled :
 MW-11

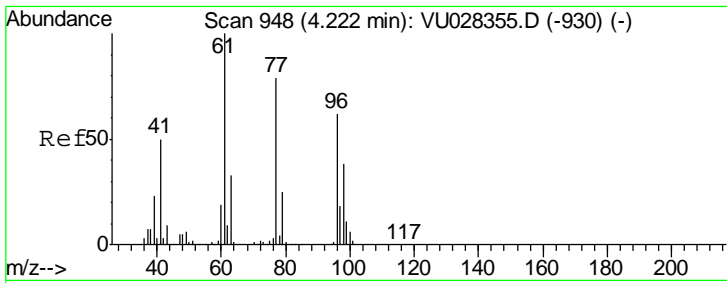
Tgt Ion	Resp	Lower	Upper
96	6577		
96	100		
61	196.5	131.1	196.7
98	66.5	51.7	77.5



#25
 2-Butanone
 Concen: 0.710 ug/l
 RT: 4.30 min Scan# 971
 Delta R.T. 0.04 min
 Lab File: VU028404.D
 Acq: 29 Nov 2018 19:16

Tgt Ion	Resp	Lower	Upper
43	2658		
43	100		
72	24.2	17.7	26.5

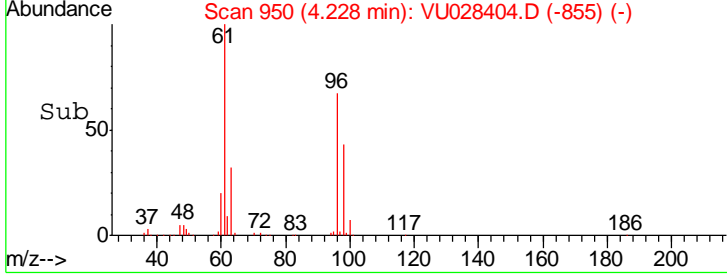
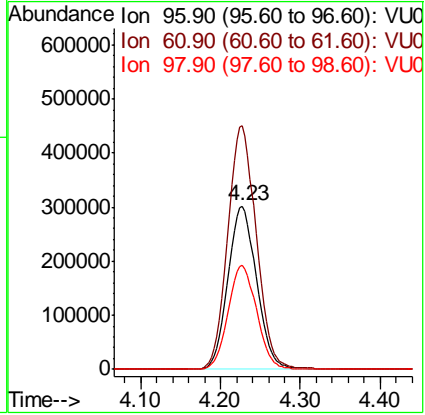
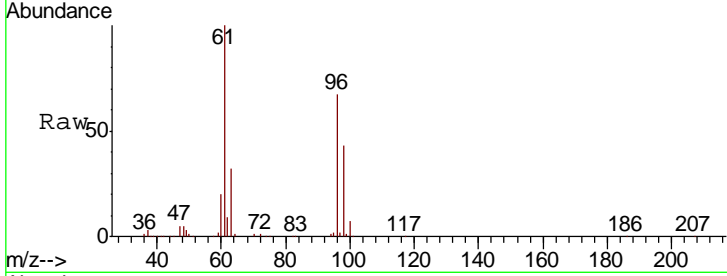




#27
 cis-1,2-Dichloroethene
 Concen: 196.900 ug/l
 RT: 4.23 min Scan# 950
 Delta R.T. 0.01 min
 Lab File: VU028404.D
 Acq: 29 Nov 2018 19:16

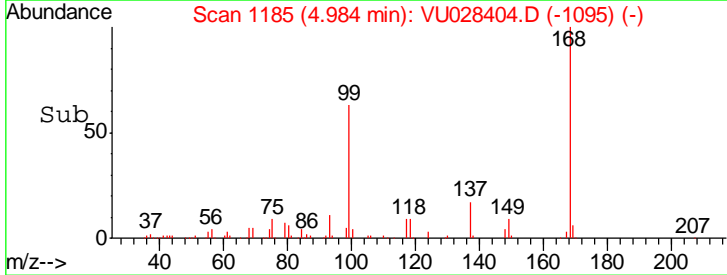
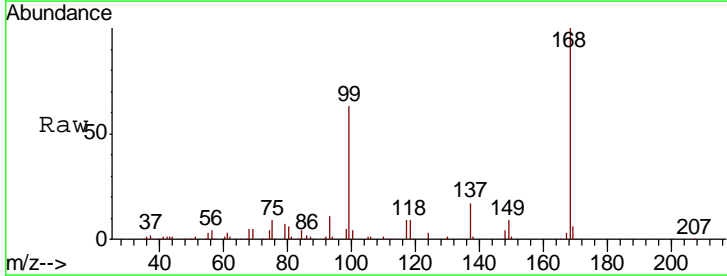
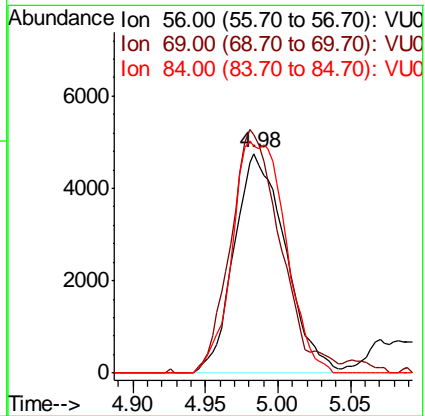
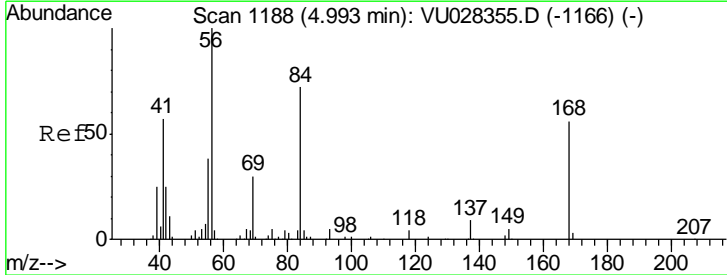
Instrument :
 MSVOA_U
 ClientSampled :
 MW-11

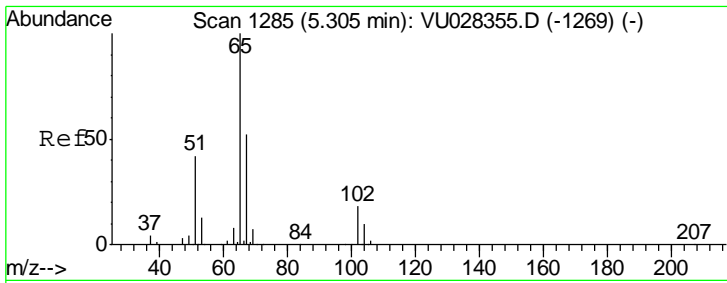
Tgt Ion	Resp	Lower	Upper
96	737662		
Ion Ratio			
96	100		
61	147.8	0.0	342.0
98	63.4	0.0	126.4



#31
 Cyclohexane
 Concen: 1.269 ug/l
 RT: 4.98 min Scan# 1185
 Delta R.T. -0.01 min
 Lab File: VU028404.D
 Acq: 29 Nov 2018 19:16

Tgt Ion	Resp	Lower	Upper
56	11699		
Ion Ratio			
56	100		
69	108.3	23.7	35.5#
84	103.1	57.3	85.9#

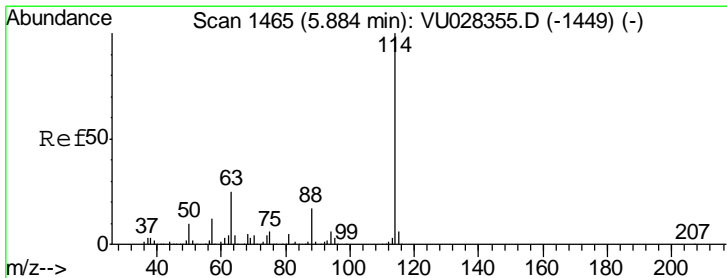
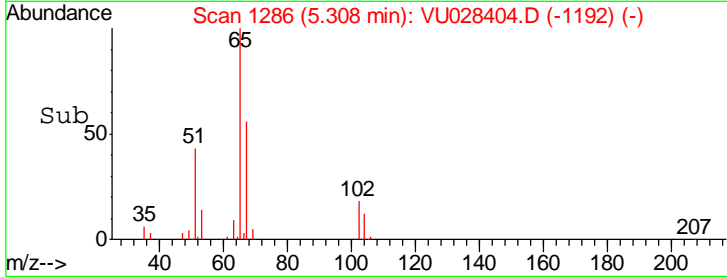
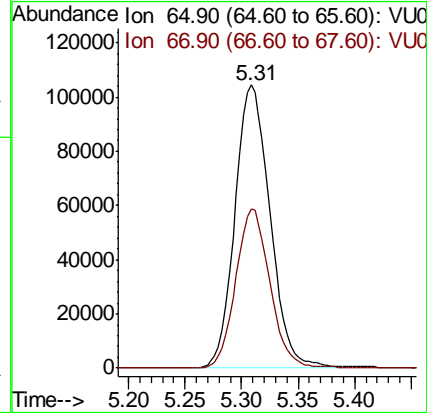
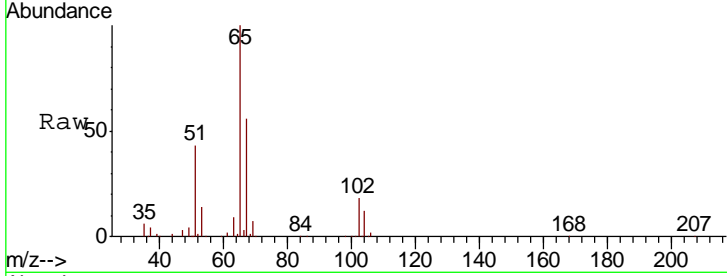




#33
 1,2-Dichloroethane-d4
 Concen: 52.893 ug/l
 RT: 5.31 min Scan# 1286
 Delta R.T. 0.00 min
 Lab File: VU028404.D
 Acq: 29 Nov 2018 19:16

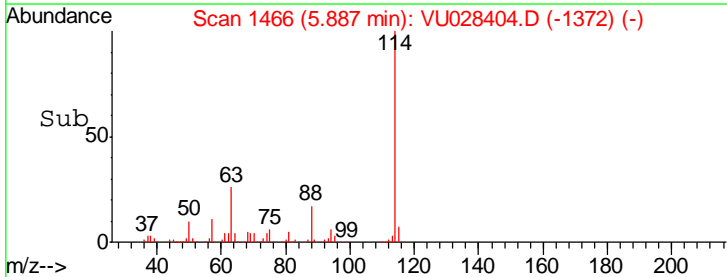
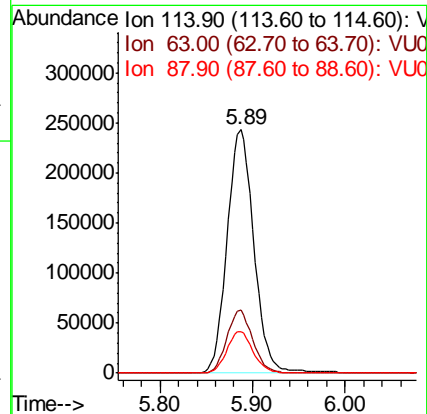
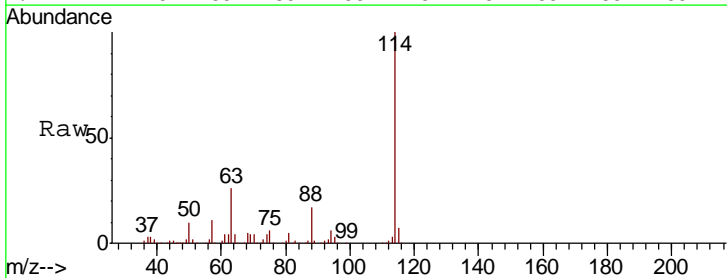
Instrument :
 MSVOA_U
 ClientSampled :
 MW-11

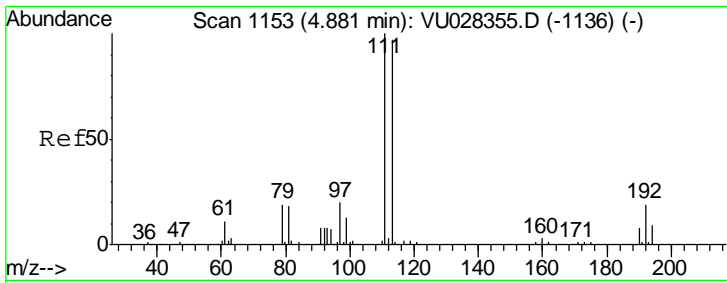
Tgt Ion: 65 Resp: 226018
 Ion Ratio Lower Upper
 65 100
 67 54.4 0.0 106.8



#34
 1,4-Difluorobenzene
 Concen: 50.000 ug/l
 RT: 5.89 min Scan# 1466
 Delta R.T. 0.00 min
 Lab File: VU028404.D
 Acq: 29 Nov 2018 19:16

Tgt Ion: 114 Resp: 488059
 Ion Ratio Lower Upper
 114 100
 63 25.7 0.0 50.0
 88 17.2 0.0 34.4

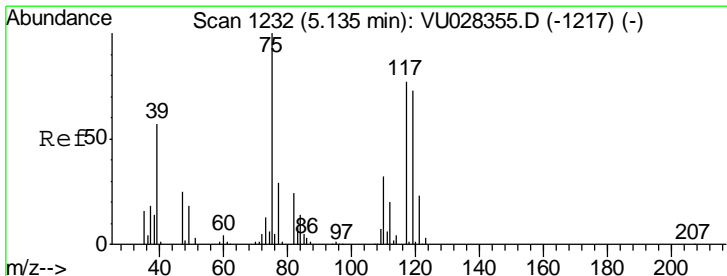
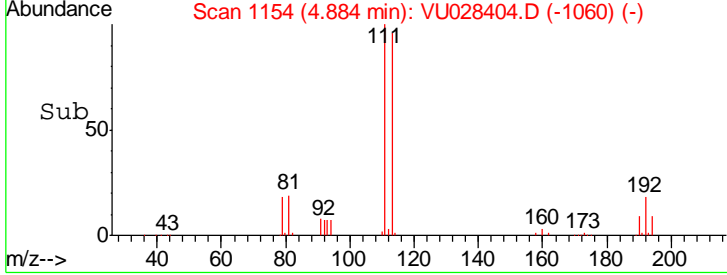
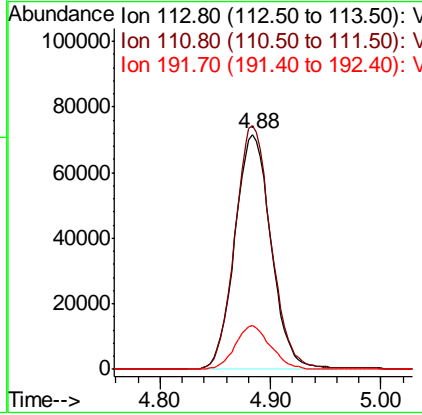
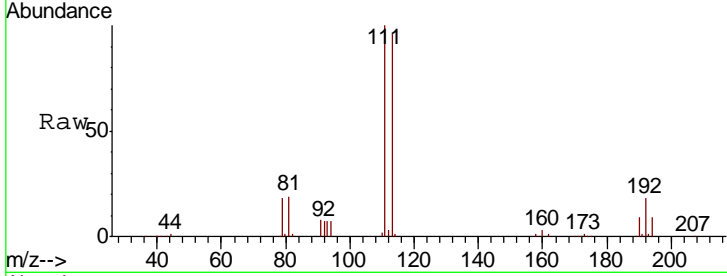




#35
 Dibromofluoromethane
 Concen: 50.283 ug/l
 RT: 4.88 min Scan# 1154
 Delta R.T. 0.00 min
 Lab File: VU028404.D
 Acq: 29 Nov 2018 19:16

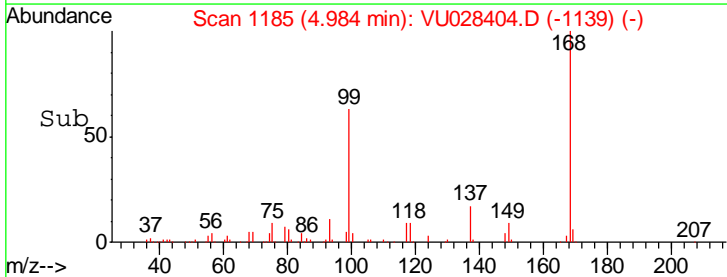
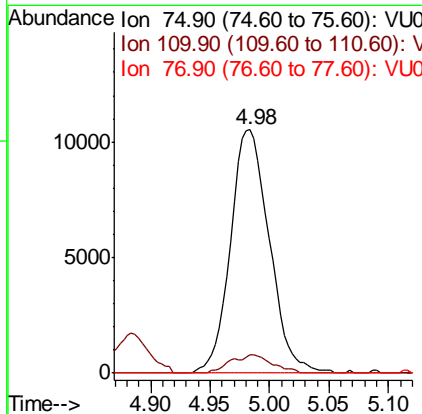
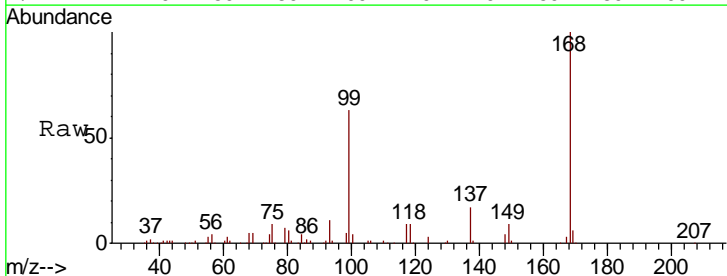
Instrument : MSVOA_U
 ClientSampled : MW-11

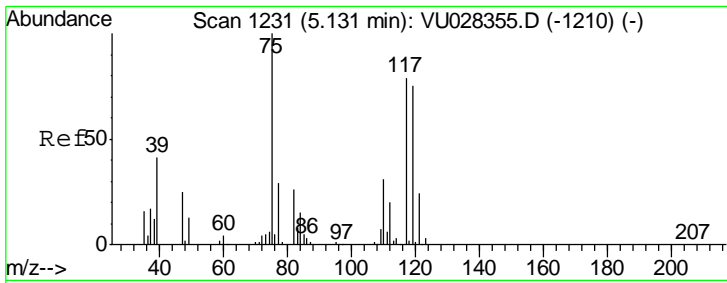
Tgt Ion	Resp	Lower	Upper
113	163189		
111	103.0	82.9	124.3
192	18.1	15.4	23.0



#36
 1,1-Dichloropropene
 Concen: 4.456 ug/l
 RT: 4.98 min Scan# 1185
 Delta R.T. -0.15 min
 Lab File: VU028404.D
 Acq: 29 Nov 2018 19:16

Tgt Ion	Resp	Lower	Upper
75	23799		
110	8.2	15.8	47.4#
77	0.0	24.6	36.8#

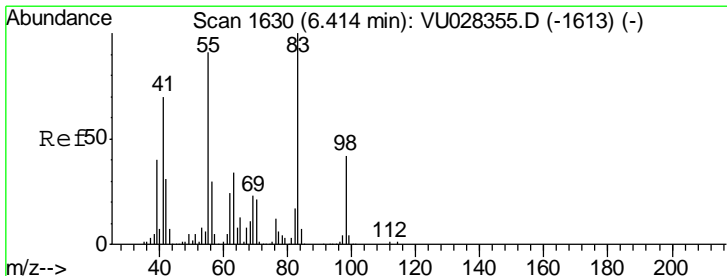
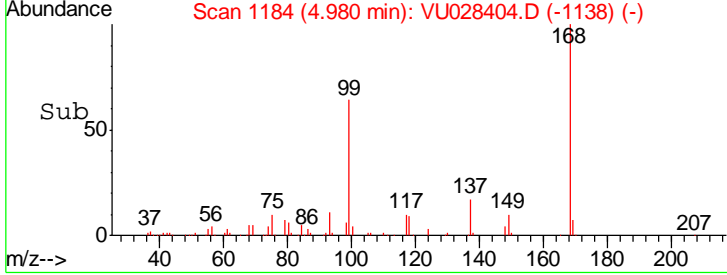
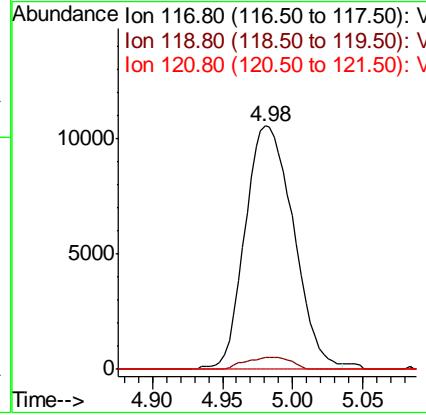
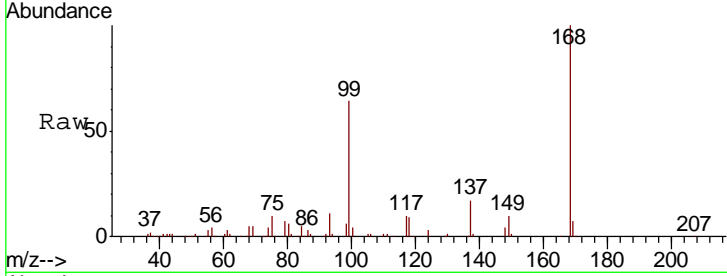




#38
 Carbon Tetrachloride
 Concen: 5.766 ug/l
 RT: 4.98 min Scan# 1184
 Delta R.T. -0.15 min
 Lab File: VU028404.D
 Acq: 29 Nov 2018 19:16

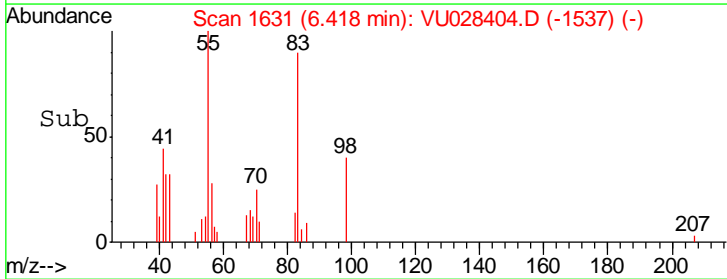
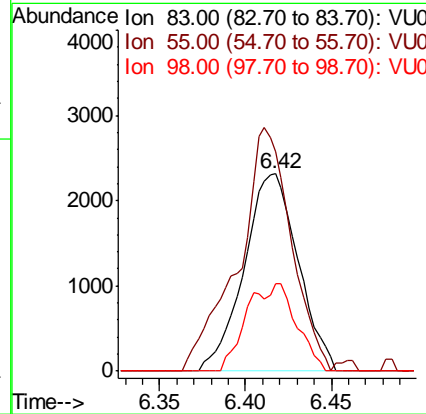
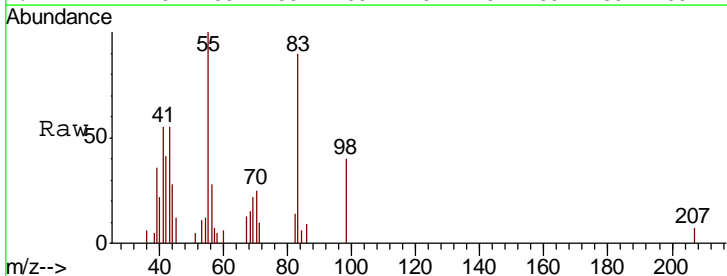
Instrument : MSVOA_U
 ClientSampled : MW-11

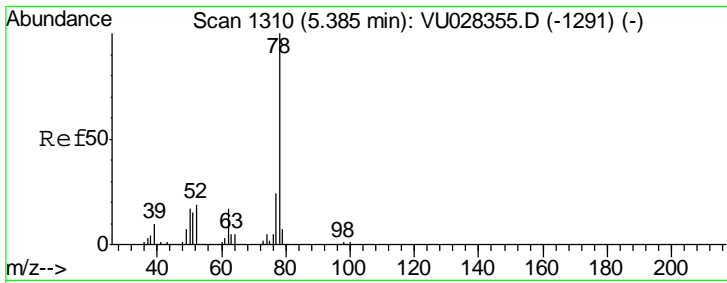
Tgt Ion	Resp	Lower	Upper
117	25286		
117	100		
119	5.0	76.3	114.5#
121	0.0	24.7	37.1#



#39
 Methylcyclohexane
 Concen: 0.802 ug/l
 RT: 6.42 min Scan# 1631
 Delta R.T. 0.00 min
 Lab File: VU028404.D
 Acq: 29 Nov 2018 19:16

Tgt Ion	Resp	Lower	Upper
83	5048		
83	100		
55	106.7	73.1	109.7
98	44.0	33.9	50.9

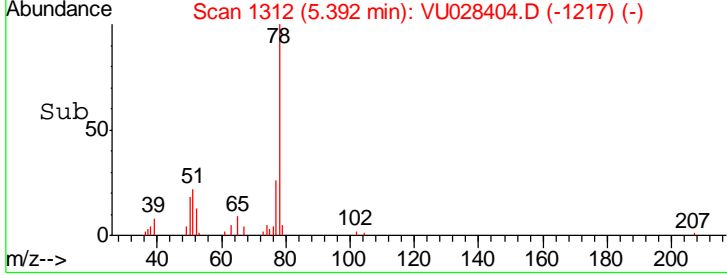
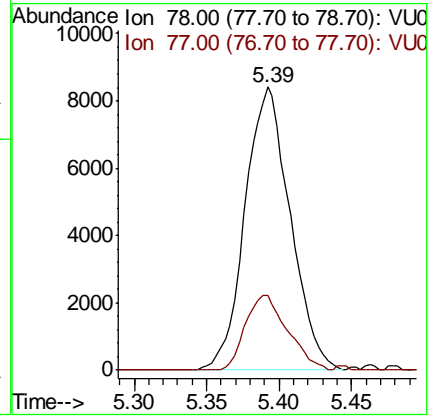
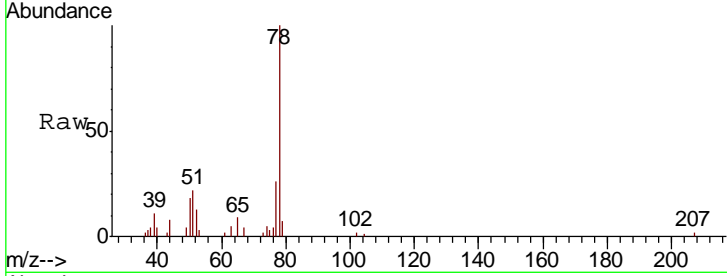




#40
Benzene
Concen: 1.153 ug/l
RT: 5.39 min Scan# 1312
Delta R.T. 0.01 min
Lab File: VU028404.D
Acq: 29 Nov 2018 19:16

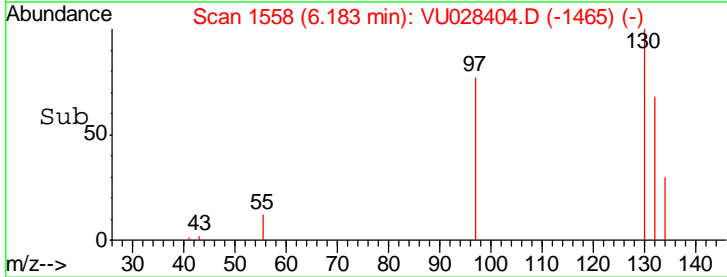
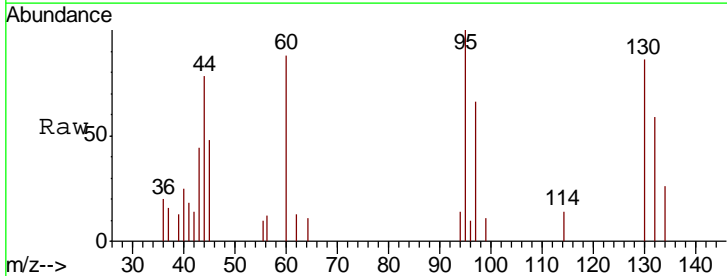
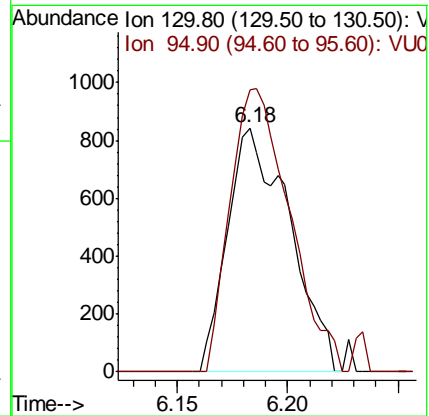
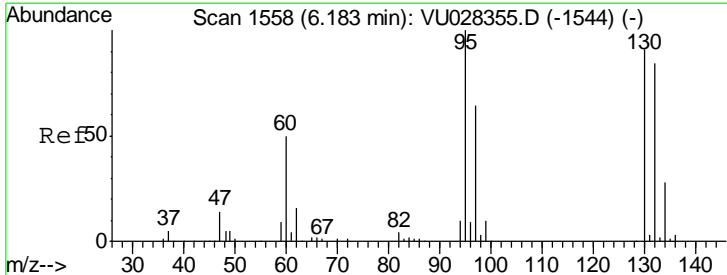
Instrument : MSVOA_U
ClientSampled : MW-11

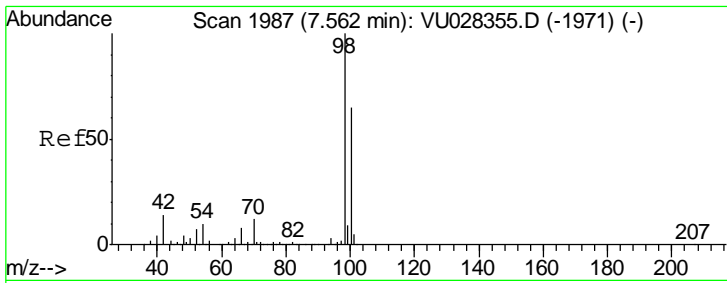
Tgt Ion: 78 Resp: 18233
Ion Ratio Lower Upper
78 100
77 26.2 19.0 28.6



#44
Trichloroethene
Concen: 0.485 ug/l
RT: 6.18 min Scan# 1558
Delta R.T. -0.00 min
Lab File: VU028404.D
Acq: 29 Nov 2018 19:16

Tgt Ion: 130 Resp: 1646
Ion Ratio Lower Upper
130 100
95 115.6 0.0 219.8

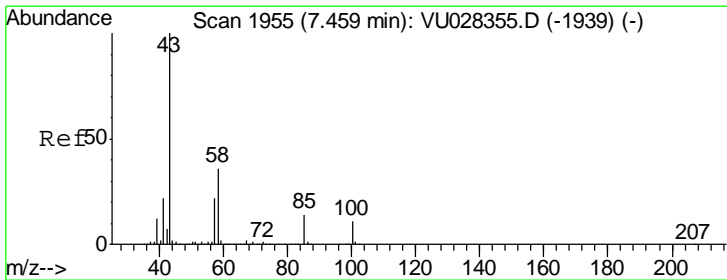
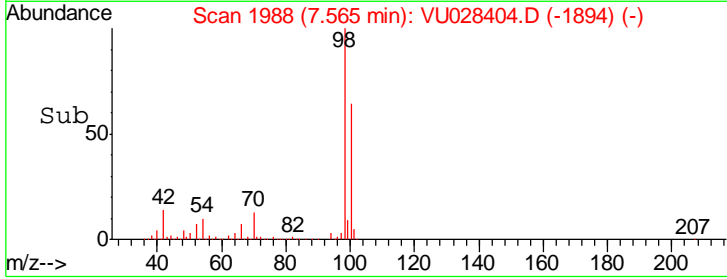
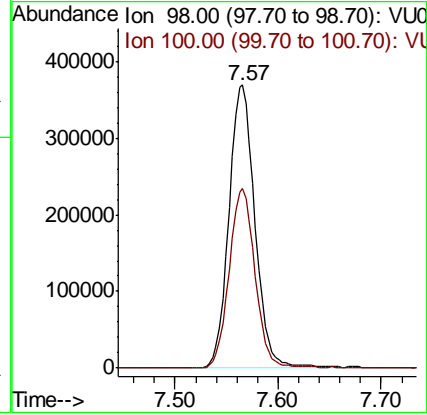
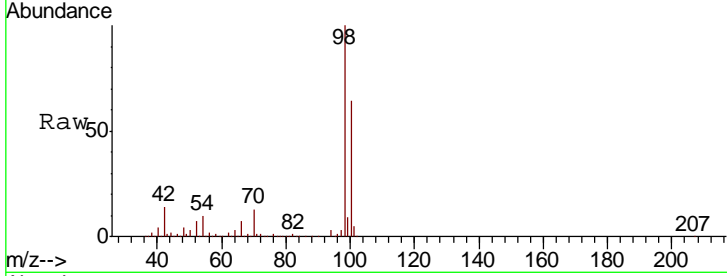




#50
 Toluene-d8
 Concen: 50.070 ug/l
 RT: 7.57 min Scan# 1988
 Delta R.T. 0.00 min
 Lab File: VU028404.D
 Acq: 29 Nov 2018 19:16

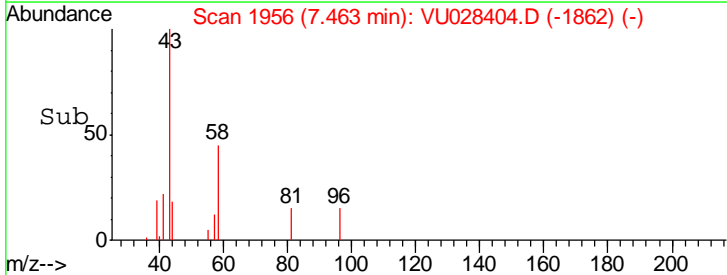
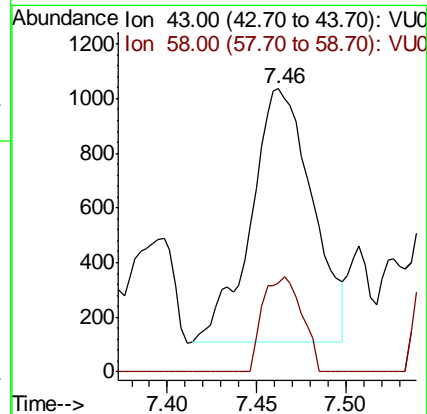
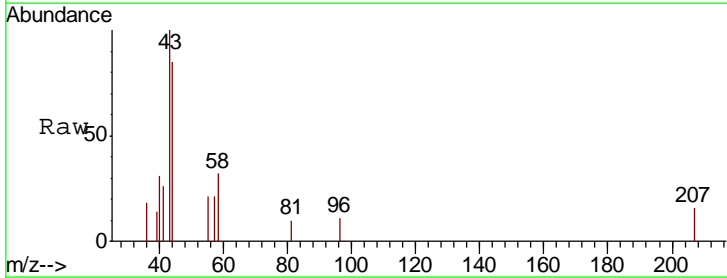
Instrument :
 MSVOA_U
 ClientSampled :
 MW-11

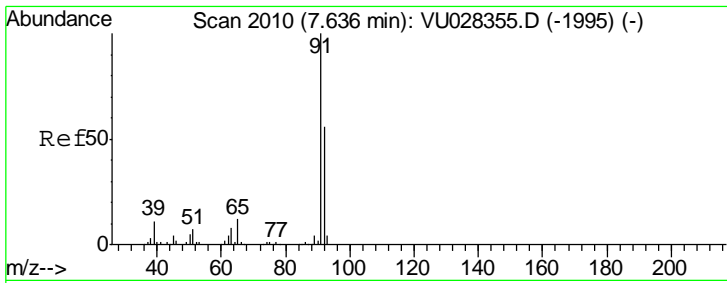
Tgt Ion	Resp	Lower	Upper
98	100		
100	63.2	50.8	76.2



#51
 4-Methyl-2-Pentanone
 Concen: 0.303 ug/l
 RT: 7.46 min Scan# 1956
 Delta R.T. 0.00 min
 Lab File: VU028404.D
 Acq: 29 Nov 2018 19:16

Tgt Ion	Resp	Lower	Upper
43	100		
58	23.9	28.8	43.2#

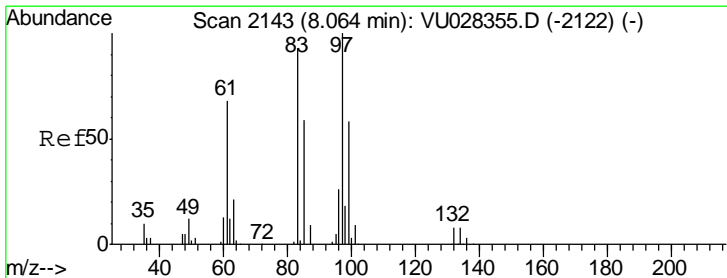
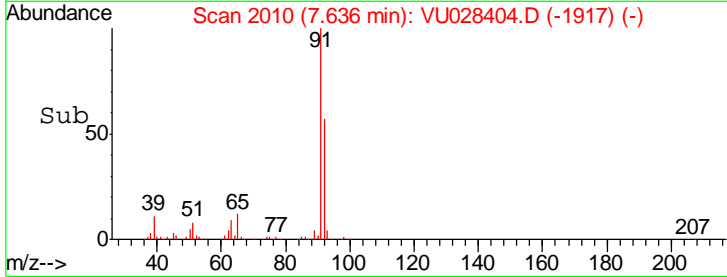
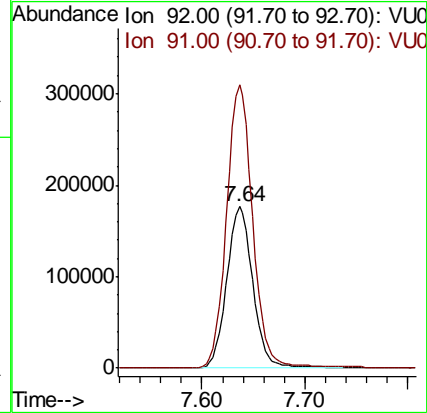
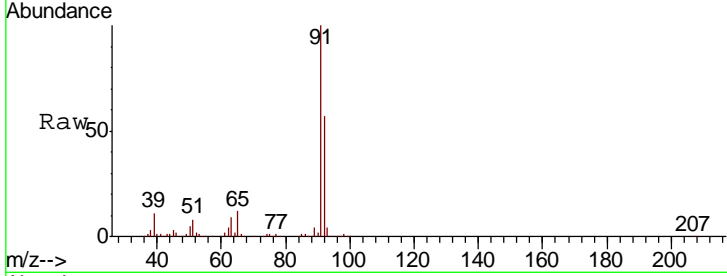




#52
 Toluene
 Concen: 34.239 ug/l
 RT: 7.64 min Scan# 2010
 Delta R.T. -0.00 min
 Lab File: VU028404.D
 Acq: 29 Nov 2018 19:16

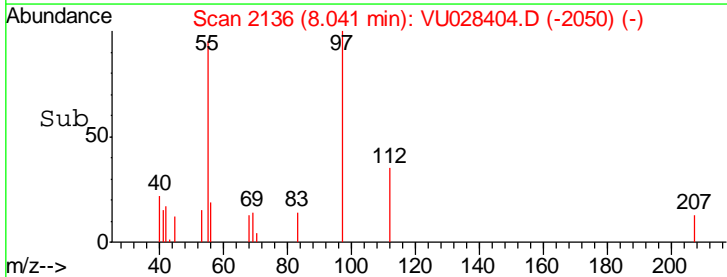
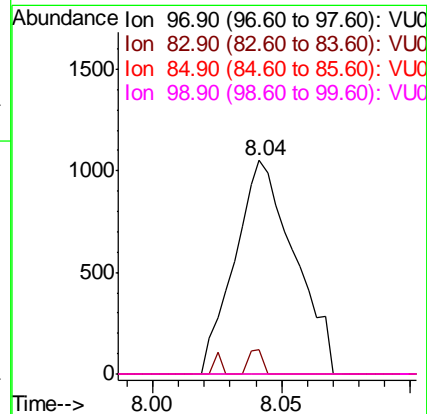
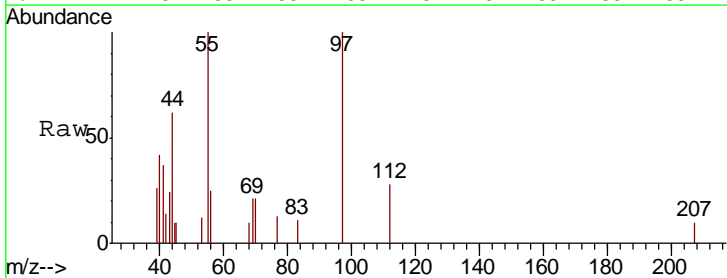
Instrument :
 MSVOA_U
 ClientSampled :
 MW-11

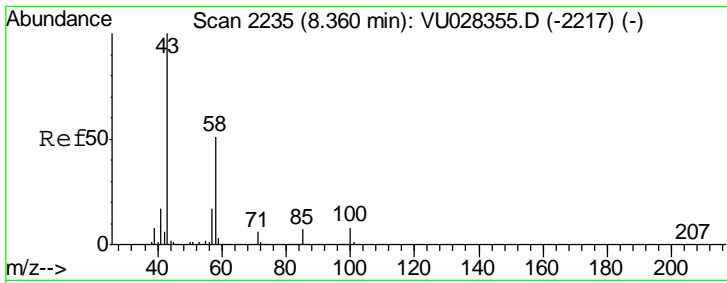
Tgt Ion	Resp	Lower	Upper
92	100		
91	174.7	141.8	212.6



#55
 1,1,2-Trichloroethane
 Concen: 0.446 ug/l
 RT: 8.04 min Scan# 2136
 Delta R.T. -0.02 min
 Lab File: VU028404.D
 Acq: 29 Nov 2018 19:16

Tgt Ion	Resp	Lower	Upper
97	100		
83	11.1	74.3	111.5#
85	0.0	47.2	70.8#
99	0.0	48.9	73.3#

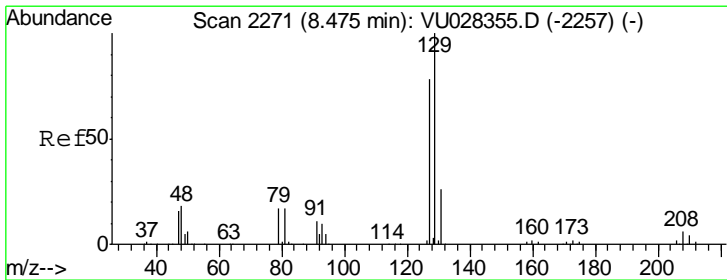
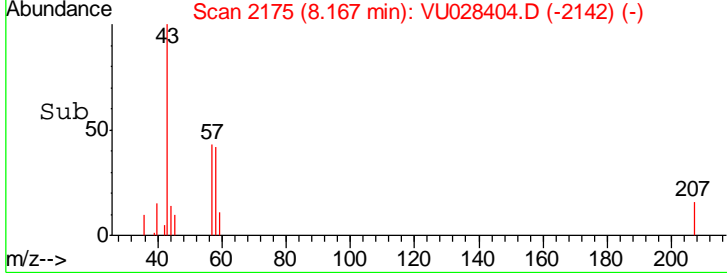
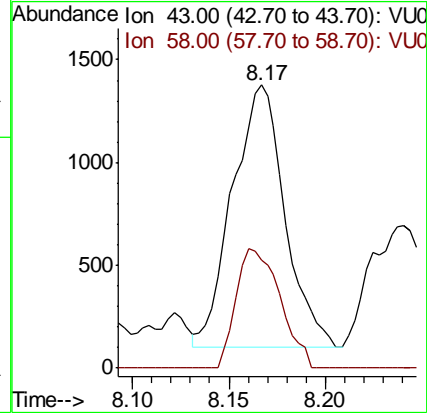
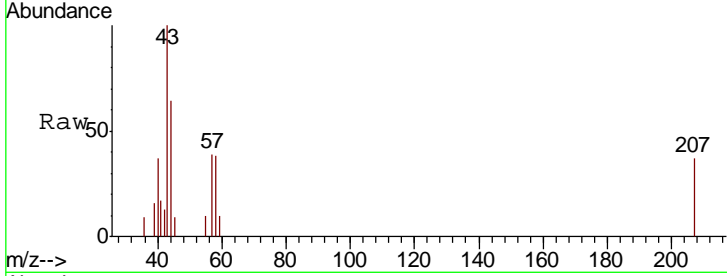




#59
 2-Hexanone
 Concen: 0.423 ug/l
 RT: 8.17 min Scan# 2175
 Delta R.T. -0.19 min
 Lab File: VU028404.D
 Acq: 29 Nov 2018 19:16

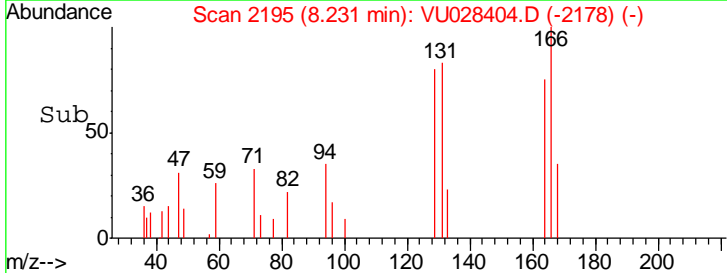
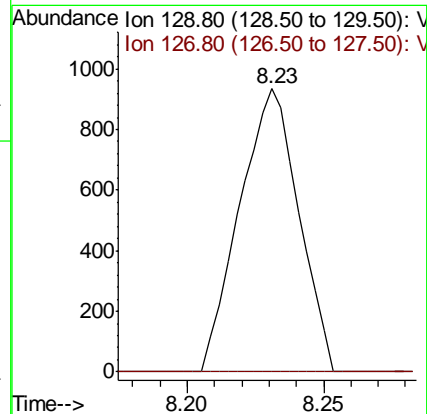
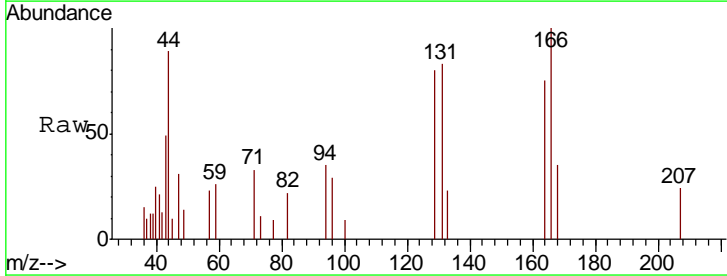
Instrument : MSVOA_U
 ClientSampled : VU028404.D
 MW-11

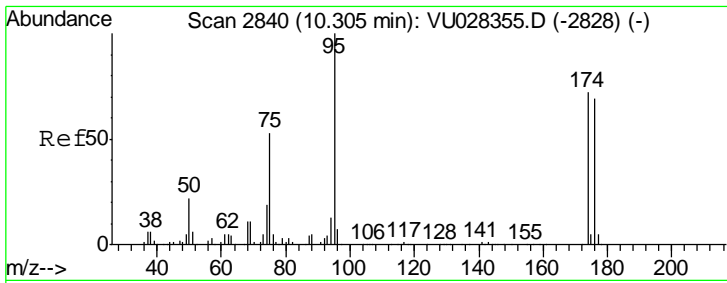
Tgt Ion	Resp	Lower	Upper
43	100		
58	38.1	25.5	76.5



#60
 Dibromochloromethane
 Concen: 0.389 ug/l
 RT: 8.23 min Scan# 2195
 Delta R.T. -0.24 min
 Lab File: VU028404.D
 Acq: 29 Nov 2018 19:16

Tgt Ion	Resp	Lower	Upper
129	100		
127	0.0	38.9	116.7#

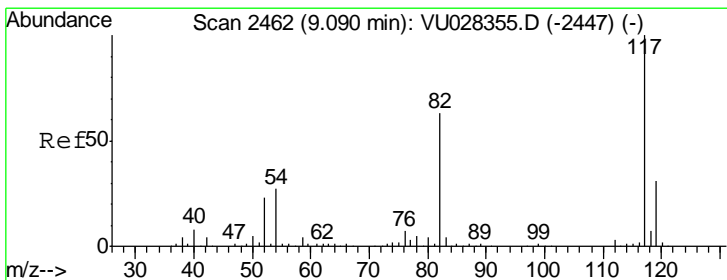
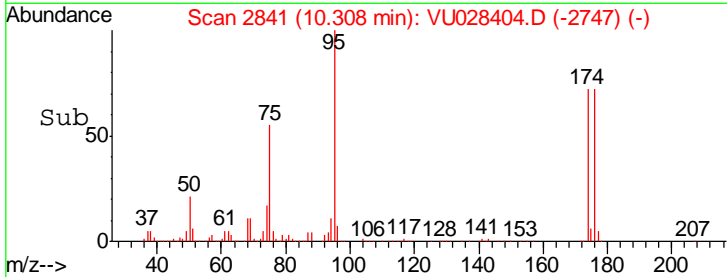
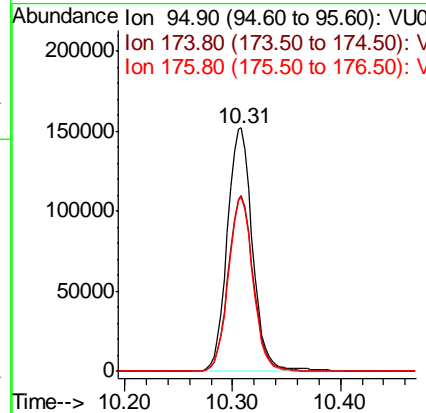
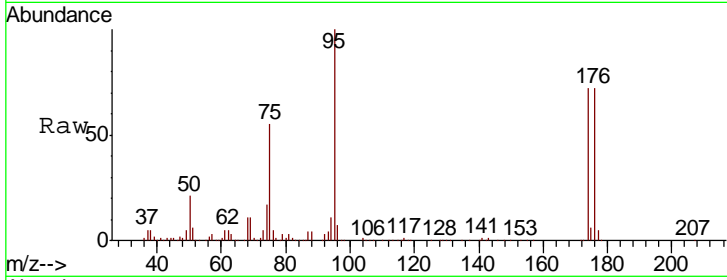




#62
 4-Bromofluorobenzene
 Concen: 53.039 ug/l
 RT: 10.31 min Scan# 2841
 Delta R.T. 0.00 min
 Lab File: VU028404.D
 Acq: 29 Nov 2018 19:16

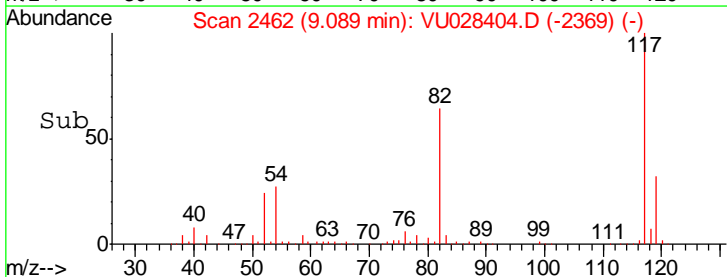
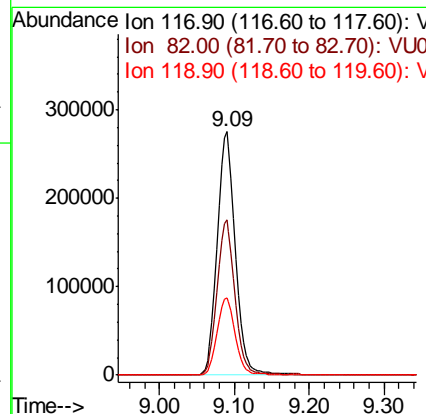
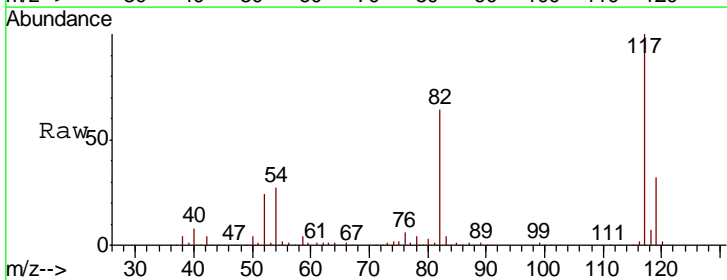
Instrument :
 MSVOA_U
 ClientSampled :
 MW-11

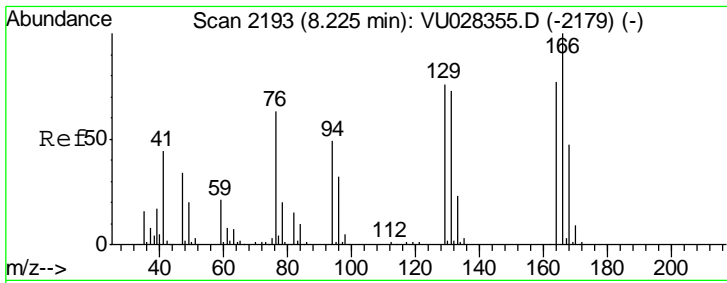
Tgt Ion	Resp	Lower	Upper
95	248121		
174	71.7	0.0	145.4
176	69.3	0.0	140.8



#63
 Chlorobenzene-d5
 Concen: 50.000 ug/l
 RT: 9.09 min Scan# 2462
 Delta R.T. -0.00 min
 Lab File: VU028404.D
 Acq: 29 Nov 2018 19:16

Tgt Ion	Resp	Lower	Upper
117	466089		
82	63.6	50.3	75.5
119	31.9	24.8	37.2

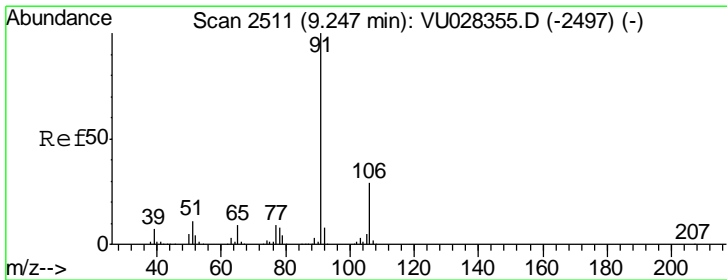
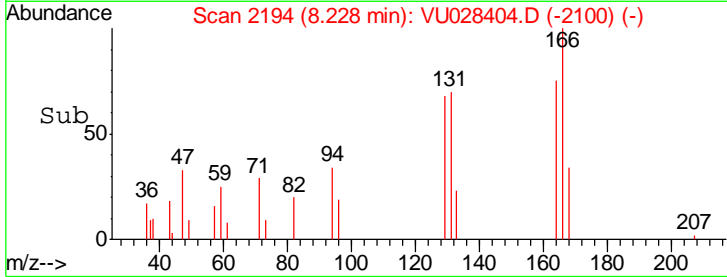
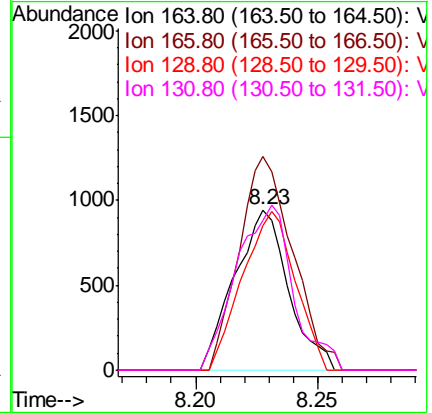
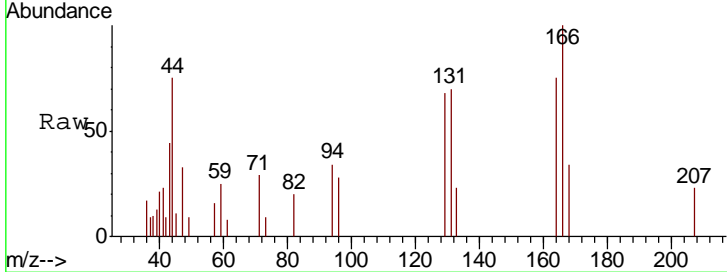




#64
 Tetrachloroethene
 Concen: 0.472 ug/l
 RT: 8.23 min Scan# 2194
 Delta R.T. 0.00 min
 Lab File: VU028404.D
 Acq: 29 Nov 2018 19:16

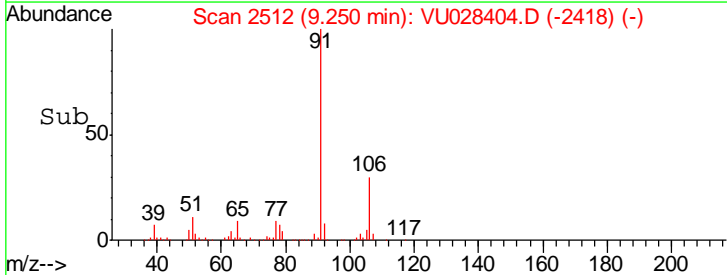
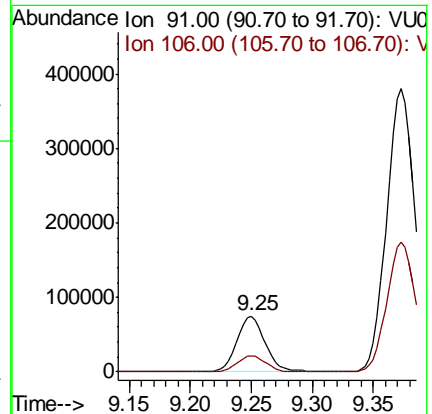
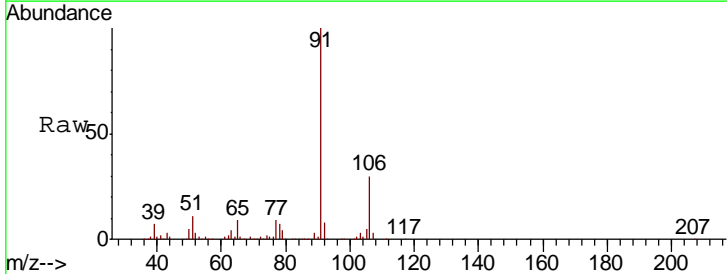
Instrument : MSVOA_U
 ClientSampled : MW-11

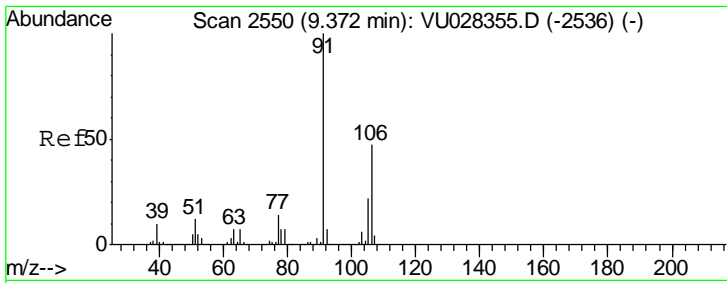
Tgt Ion	Resp	Lower	Upper
164	100		
166	133.5	104.0	156.0
129	90.6	79.2	118.8
131	93.5	75.7	113.5



#67
 Ethyl Benzene
 Concen: 6.671 ug/l
 RT: 9.25 min Scan# 2512
 Delta R.T. 0.00 min
 Lab File: VU028404.D
 Acq: 29 Nov 2018 19:16

Tgt Ion	Resp	Lower	Upper
91	100		
106	29.6	23.3	34.9

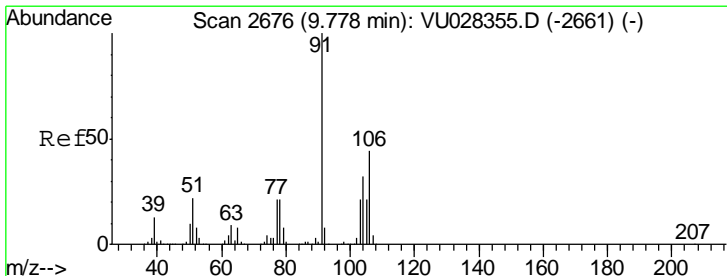
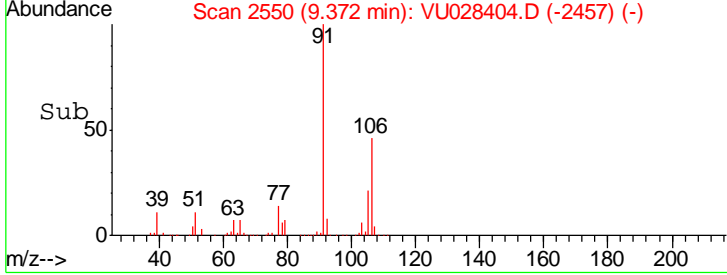
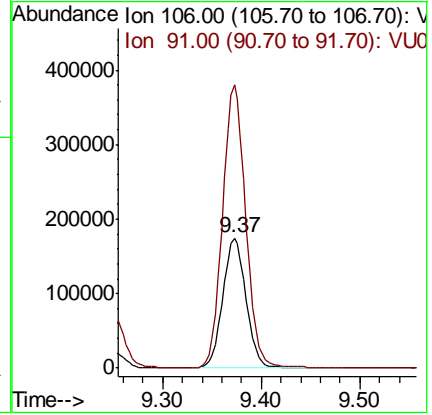
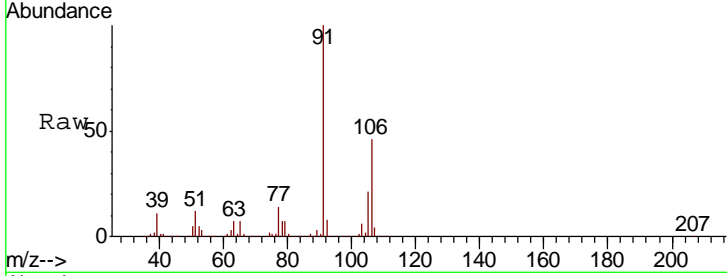




#68
 m/p-Xylenes
 Concen: 44.252 ug/l
 RT: 9.37 min Scan# 2550
 Delta R.T. -0.00 min
 Lab File: VU028404.D
 Acq: 29 Nov 2018 19:16

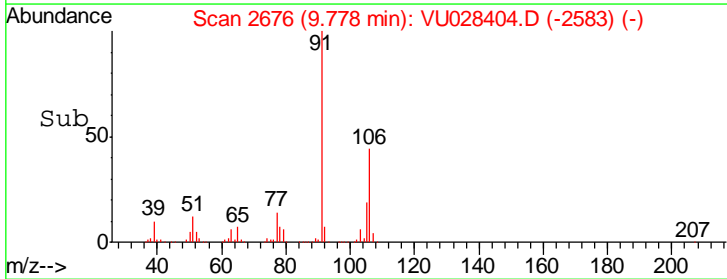
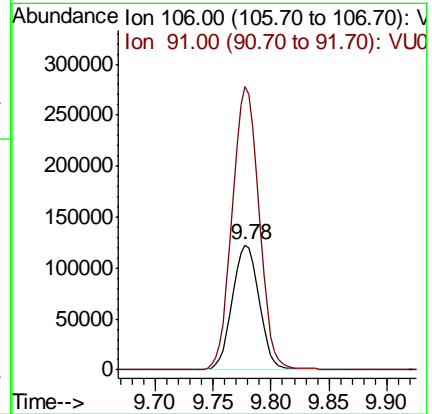
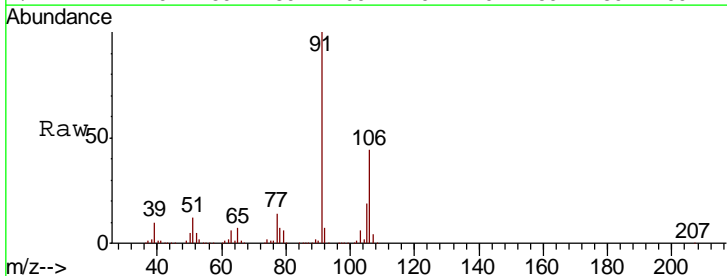
Instrument : MSVOA_U
 ClientSampled : MW-11

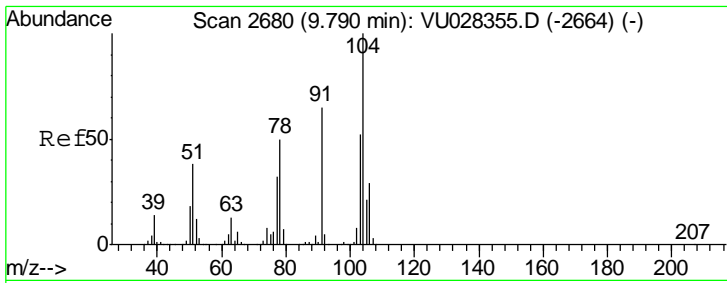
Tgt Ion	Resp	Lower	Upper
106	100		
91	216.0	171.0	256.6



#69
 o-Xylene
 Concen: 30.093 ug/l
 RT: 9.78 min Scan# 2676
 Delta R.T. -0.00 min
 Lab File: VU028404.D
 Acq: 29 Nov 2018 19:16

Tgt Ion	Resp	Lower	Upper
106	100		
91	226.7	112.7	338.0

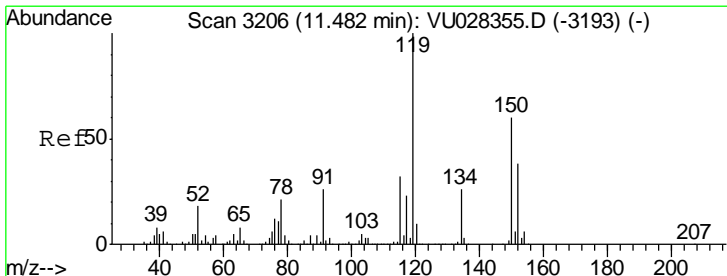
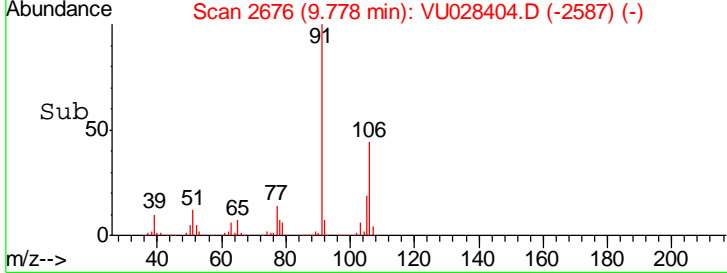
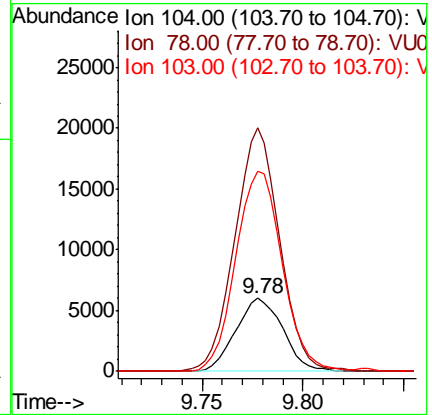
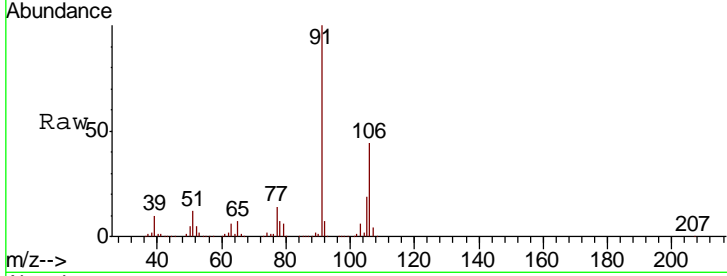




#70
 Styrene
 Concen: 0.929 ug/l
 RT: 9.78 min Scan# 2676
 Delta R.T. -0.01 min
 Lab File: VU028404.D
 Acq: 29 Nov 2018 19:16

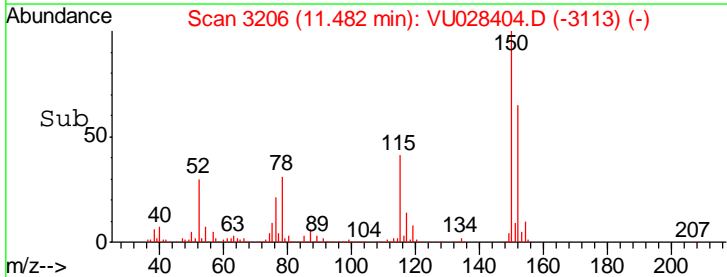
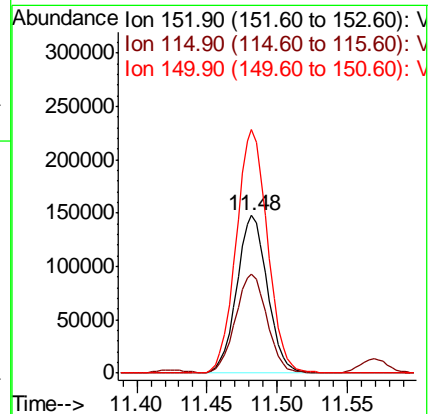
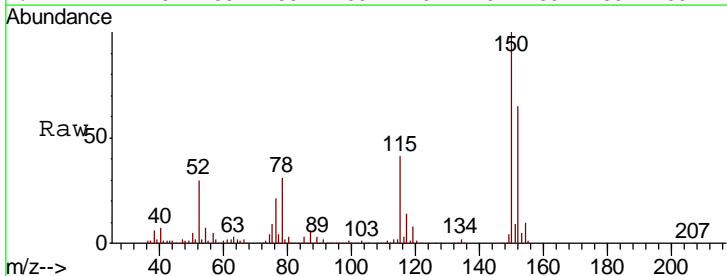
Instrument :
 MSVOA_U
 ClientSampled :
 MW-11

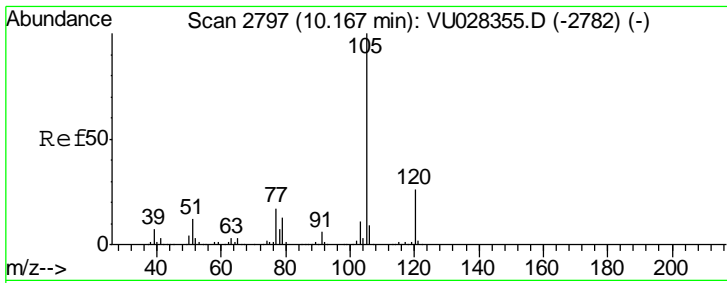
Tgt Ion	Resp	Lower	Upper
104	9776		
78	318.8	43.3	64.9#
103	273.2	44.8	67.2#



#72
 1,4-Dichlorobenzene-d4
 Concen: 50.000 ug/l
 RT: 11.48 min Scan# 3206
 Delta R.T. -0.00 min
 Lab File: VU028404.D
 Acq: 29 Nov 2018 19:16

Tgt Ion	Resp	Lower	Upper
152	225805		
115	64.1	45.0	134.8
150	157.6	0.0	349.2

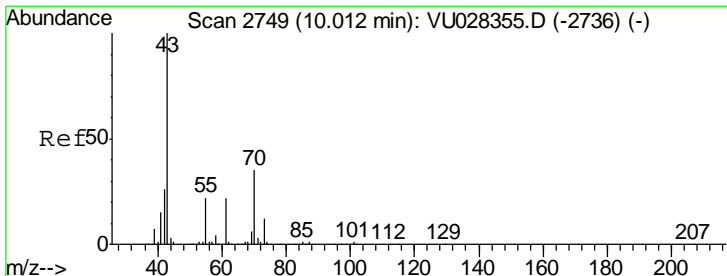
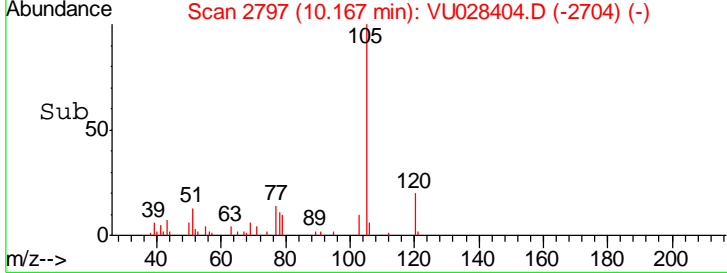
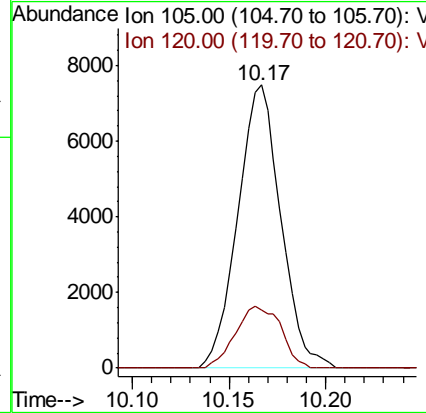
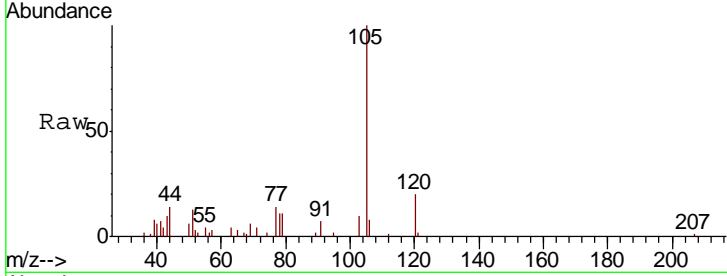




#73
 Isopropylbenzene
 Concen: 0.658 ug/l
 RT: 10.17 min Scan# 2797
 Delta R.T. -0.00 min
 Lab File: VU028404.D
 Acq: 29 Nov 2018 19:16

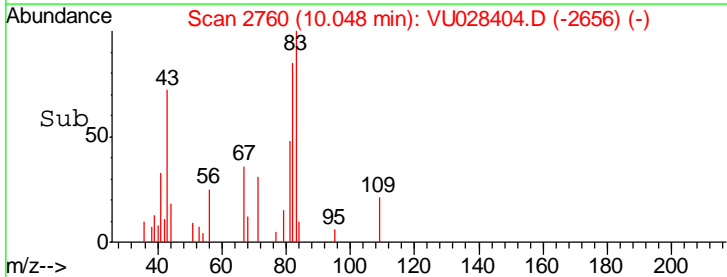
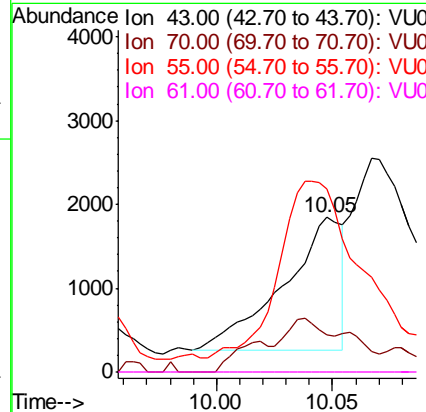
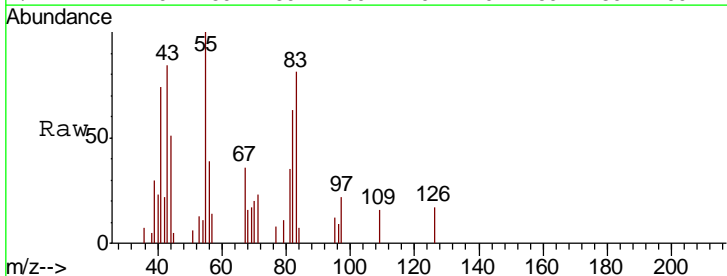
Instrument :
 MSVOA_U
 ClientSampled :
 MW-11

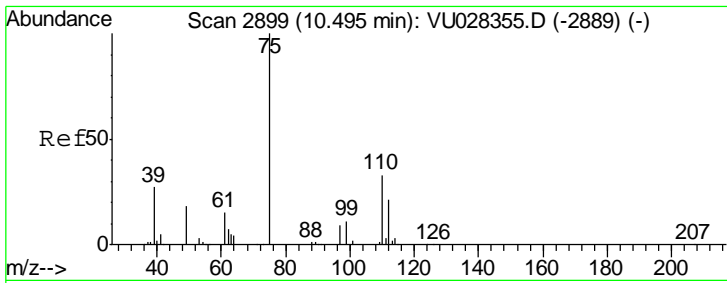
Tgt Ion	Resp	Lower	Upper
105	11553		
120	23.2	12.8	38.3



#74
 N-nyl acetate
 Concen: 0.256 ug/l
 RT: 10.05 min Scan# 2760
 Delta R.T. 0.04 min
 Lab File: VU028404.D
 Acq: 29 Nov 2018 19:16

Tgt Ion	Resp	Lower	Upper
43	2817		
70	14.8	28.4	42.6#
55	179.4	18.0	27.0#
61	0.0	17.6	26.4#

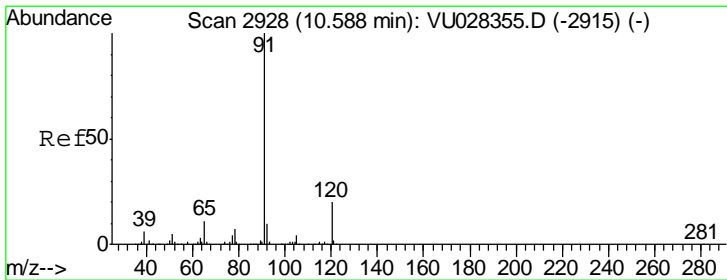
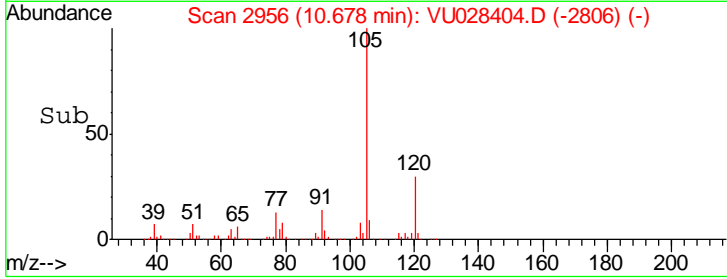
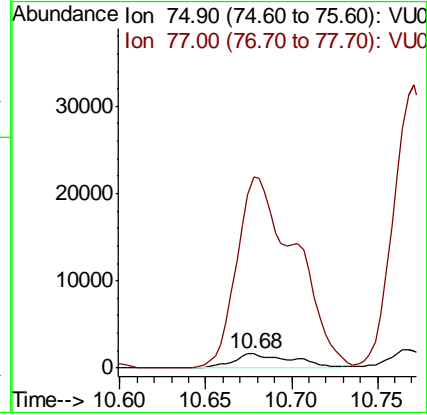
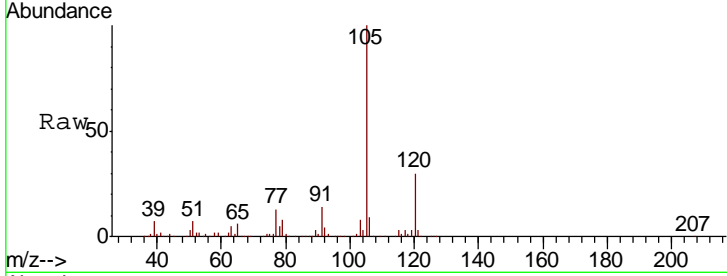




#76
 1,2,3-Trichloropropane
 Concen: 0.648 ug/l
 RT: 10.68 min Scan# 2956
 Delta R.T. 0.18 min
 Lab File: VU028404.D
 Acq: 29 Nov 2018 19:16

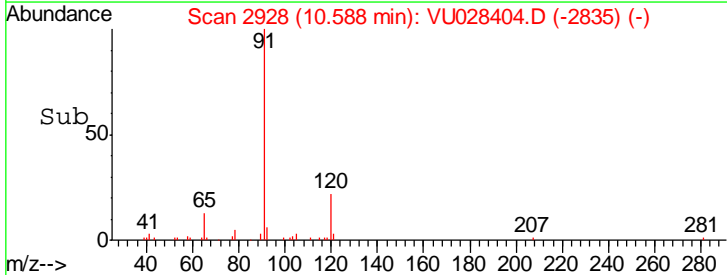
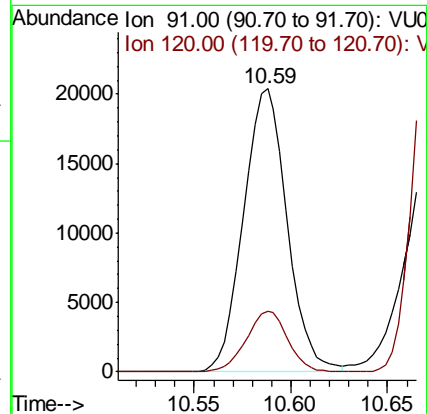
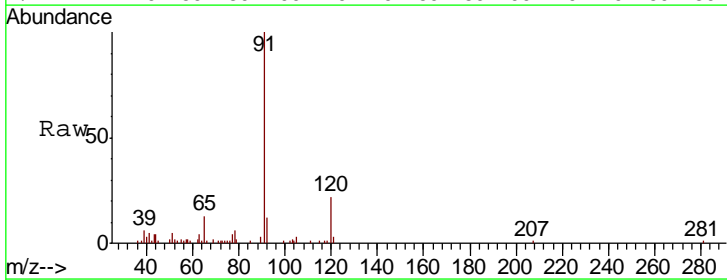
Instrument :
 MSVOA_U
 ClientSampled :
 MW-11

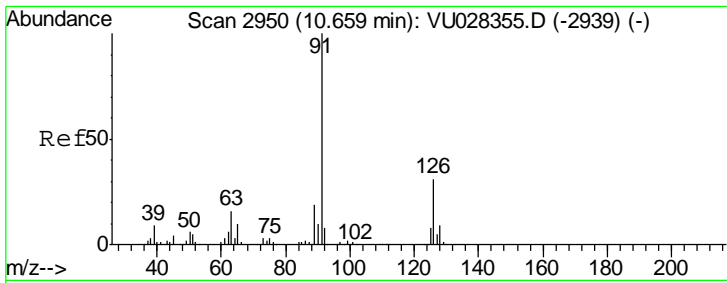
Tgt Ion: 75 Resp: 4060
 Ion Ratio Lower Upper
 75 100
 77 1286.2 22.4 67.0#



#78
 n-propylbenzene
 Concen: 1.478 ug/l
 RT: 10.59 min Scan# 2928
 Delta R.T. -0.00 min
 Lab File: VU028404.D
 Acq: 29 Nov 2018 19:16

Tgt Ion: 91 Resp: 32025
 Ion Ratio Lower Upper
 91 100
 120 20.4 10.3 30.8

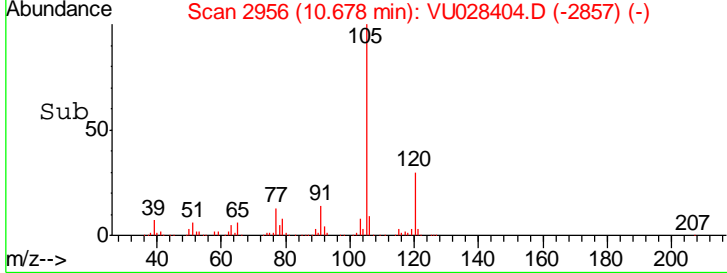
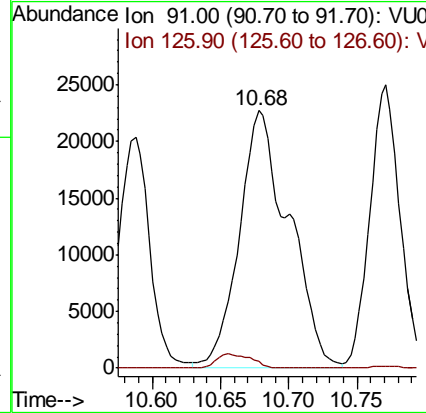
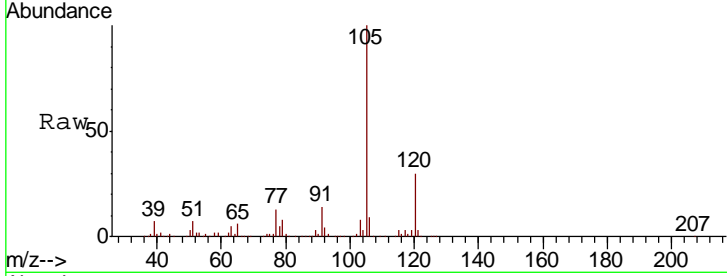




#79
 2-Chlorotoluene
 Concen: 4.465 ug/l
 RT: 10.68 min Scan# 2956
 Delta R.T. 0.02 min
 Lab File: VU028404.D
 Acq: 29 Nov 2018 19:16

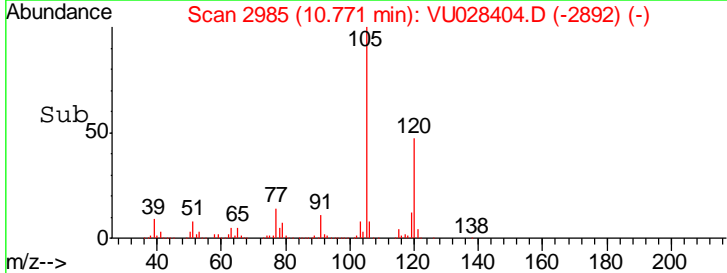
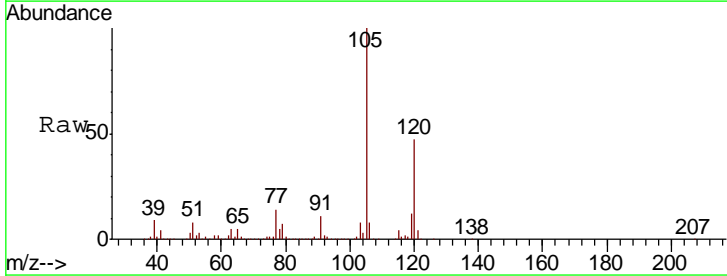
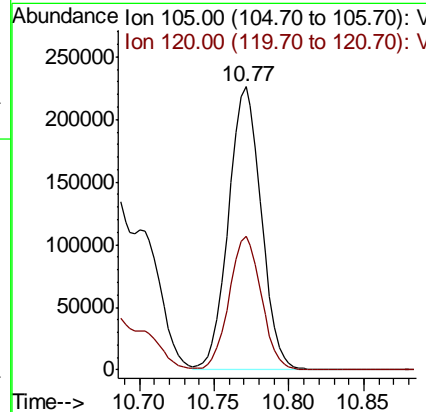
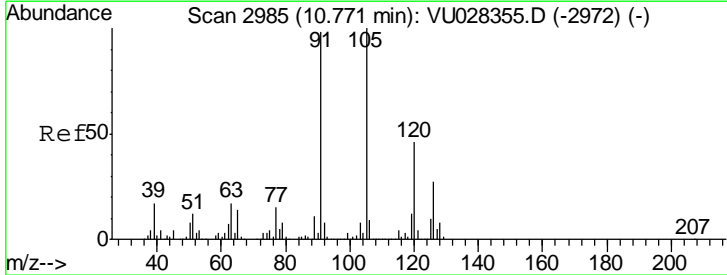
Instrument : MSVOA_U
 Client Sampled : MW-11

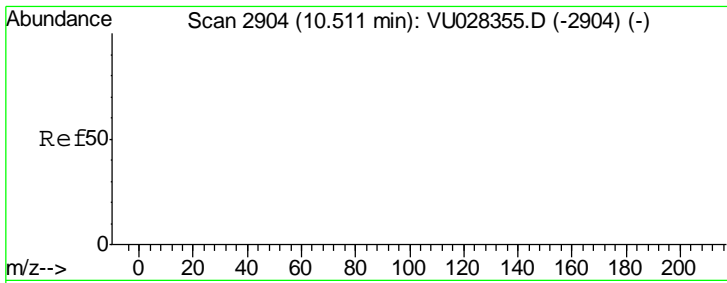
Tgt Ion	Resp	Lower	Upper
91	57030		
126	0.0	15.4	46.1#



#80
 1,3,5-Trimethylbenzene
 Concen: 23.250 ug/l
 RT: 10.77 min Scan# 2985
 Delta R.T. -0.00 min
 Lab File: VU028404.D
 Acq: 29 Nov 2018 19:16

Tgt Ion	Resp	Lower	Upper
105	344087		
120	46.5	23.4	70.0

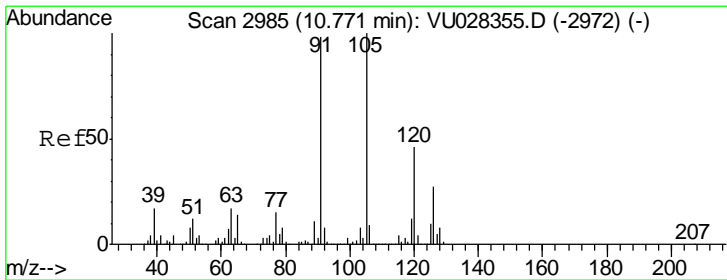
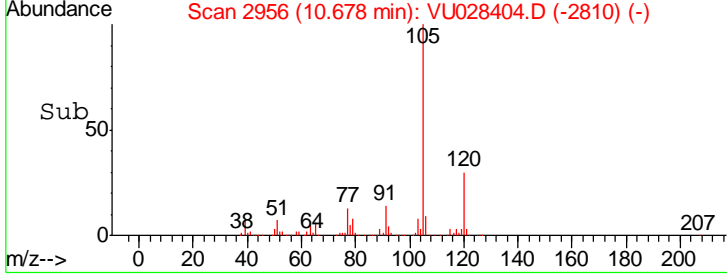
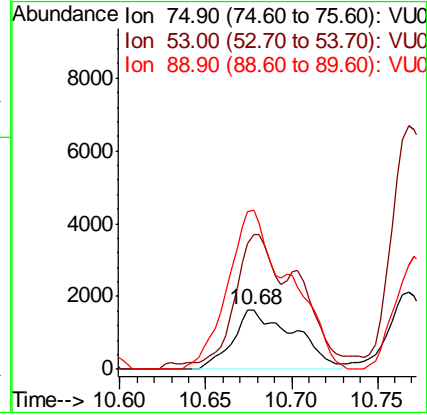
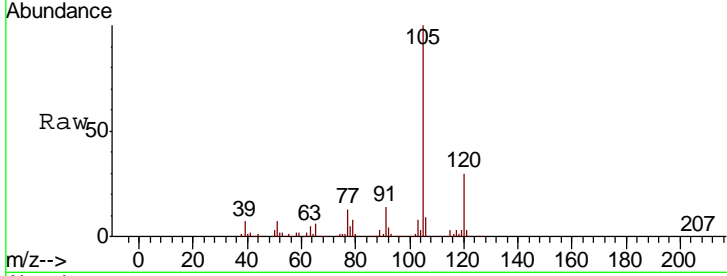




#81
 trans-1,4-Dichloro-2-butene
 Concen: 1.721 ug/l
 RT: 10.68 min Scan# 2956
 Delta R.T. 0.17 min
 Lab File: VU028404.D
 Acq: 29 Nov 2018 19:16

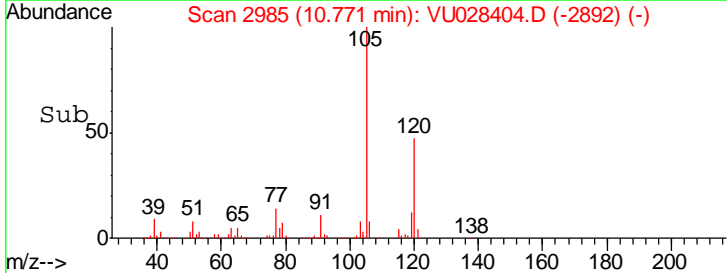
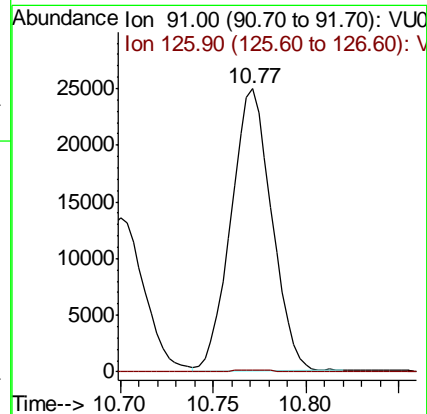
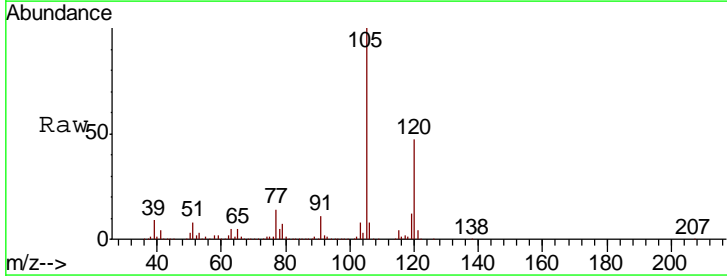
Instrument : MSVOA_U
 ClientSampled : MW-11

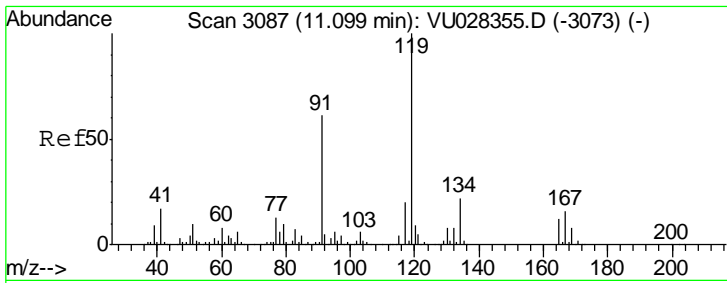
Tgt Ion	Resp	Lower	Upper
75	100		
53	136.5	0.0	0.0#
89	269.8	0.0	0.0#



#82
 4-Chlorotoluene
 Concen: 2.581 ug/l
 RT: 10.77 min Scan# 2985
 Delta R.T. -0.00 min
 Lab File: VU028404.D
 Acq: 29 Nov 2018 19:16

Tgt Ion	Resp	Lower	Upper
91	100		
126	0.6	13.9	41.6#

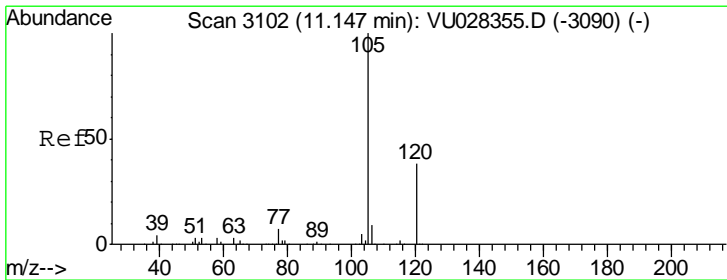
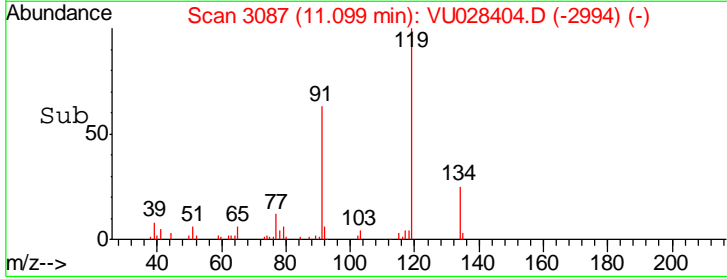
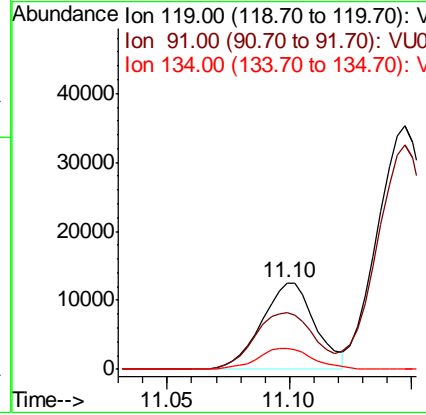
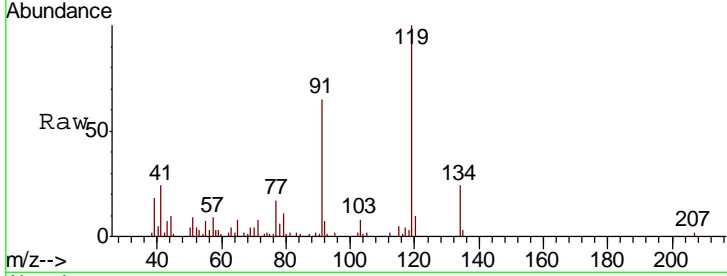




#83
 tert-Butylbenzene
 Concen: 1.386 ug/l
 RT: 11.10 min Scan# 3087
 Delta R.T. -0.00 min
 Lab File: VU028404.D
 Acq: 29 Nov 2018 19:16

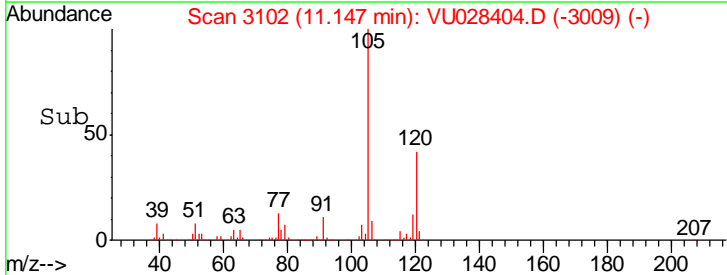
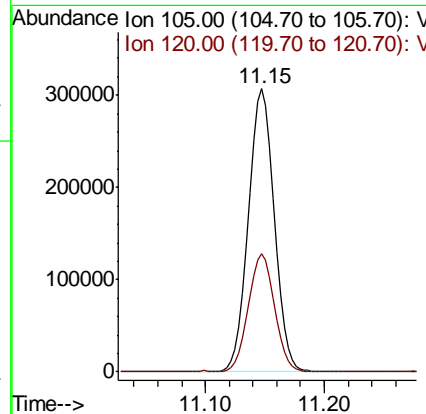
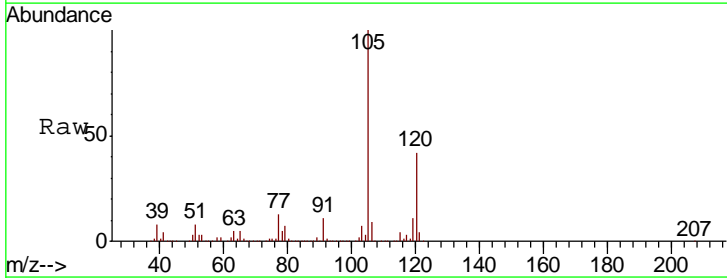
Instrument :
 MSVOA_U
 ClientSampled :
 MW-11

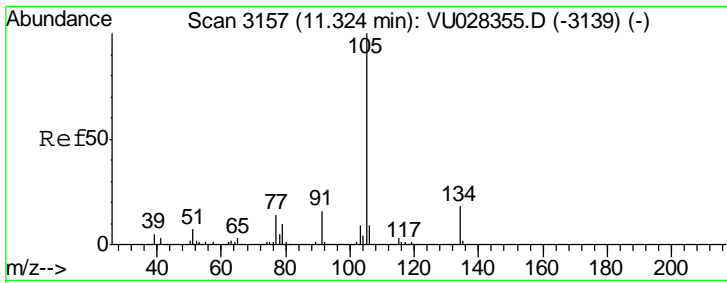
Tgt Ion	Resp	Lower	Upper
119	19125		
91	72.8	30.8	92.4
134	24.8	11.1	33.1



#84
 1,2,4-Trimethylbenzene
 Concen: 30.792 ug/l
 RT: 11.15 min Scan# 3102
 Delta R.T. -0.00 min
 Lab File: VU028404.D
 Acq: 29 Nov 2018 19:16

Tgt Ion	Resp	Lower	Upper
105	461579		
120	42.3	21.4	64.3

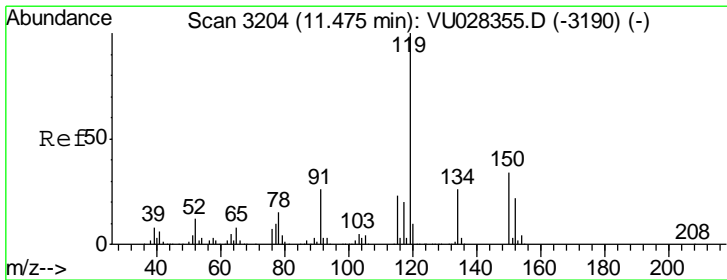
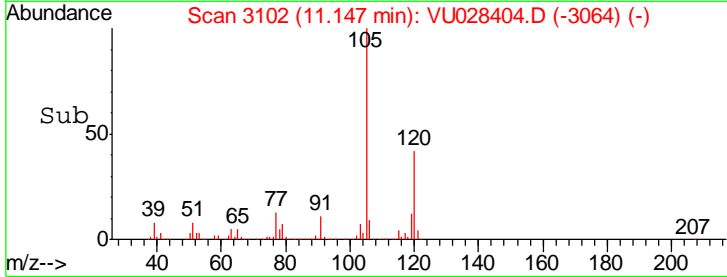
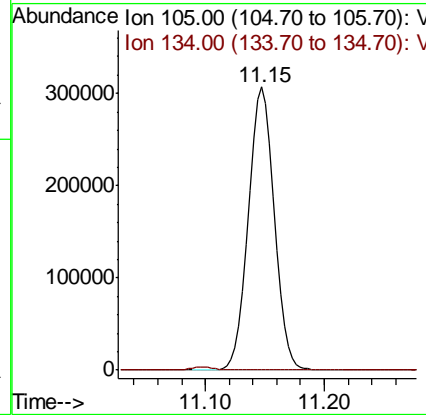
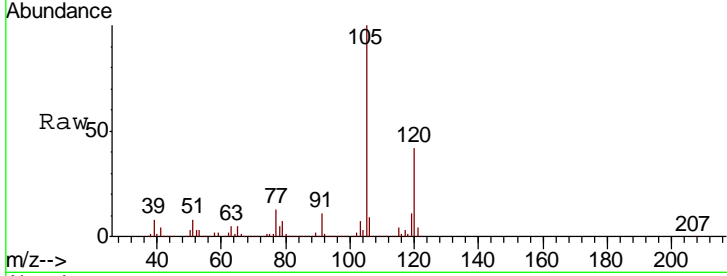




#85
 sec-Butylbenzene
 Concen: 25.759 ug/l
 RT: 11.15 min Scan# 3102
 Delta R.T. -0.18 min
 Lab File: VU028404.D
 Acq: 29 Nov 2018 19:16

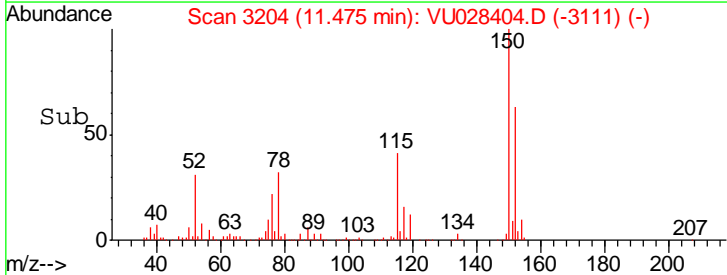
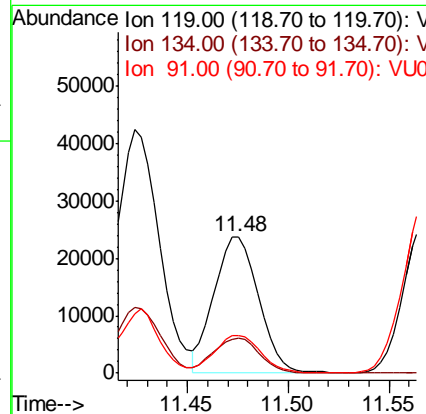
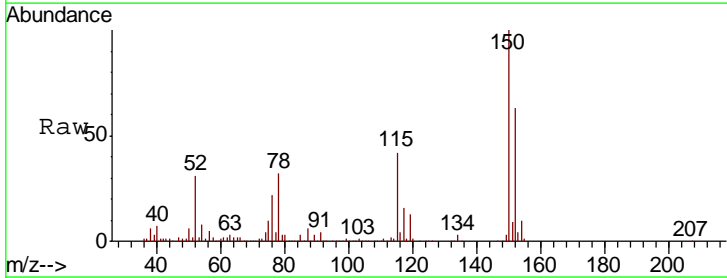
Instrument :
 MSVOA_U
 ClientSampled :
 MW-11

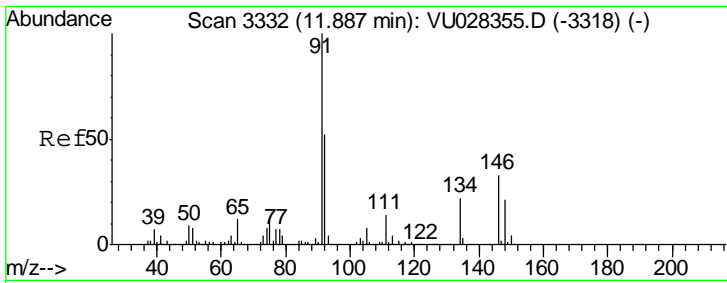
Tgt Ion	Resp	Lower	Upper
105	100		
134	0.0	9.3	27.7#



#86
 p-Isopropyltoluene
 Concen: 2.475 ug/l
 RT: 11.48 min Scan# 3204
 Delta R.T. -0.00 min
 Lab File: VU028404.D
 Acq: 29 Nov 2018 19:16

Tgt Ion	Resp	Lower	Upper
119	100		
134	26.3	12.8	38.3
91	28.4	13.1	39.1

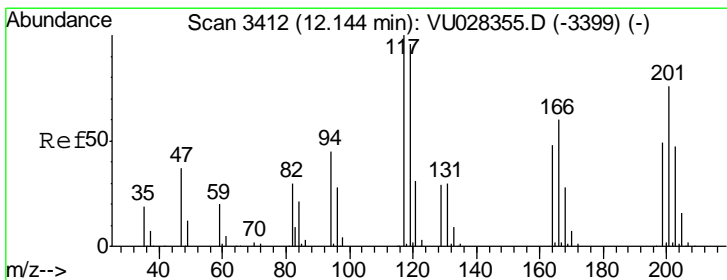
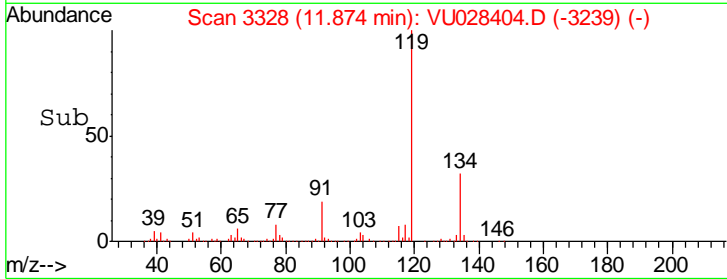
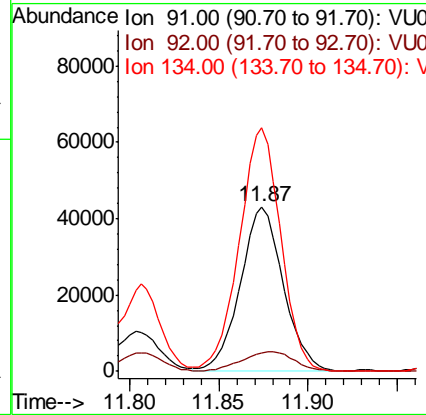
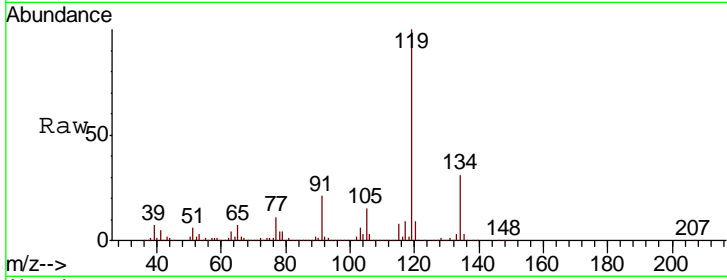




#89
 n-Butylbenzene
 Concen: 4.940 ug/l
 RT: 11.87 min Scan# 3328
 Delta R.T. -0.01 min
 Lab File: VU028404.D
 Acq: 29 Nov 2018 19:16

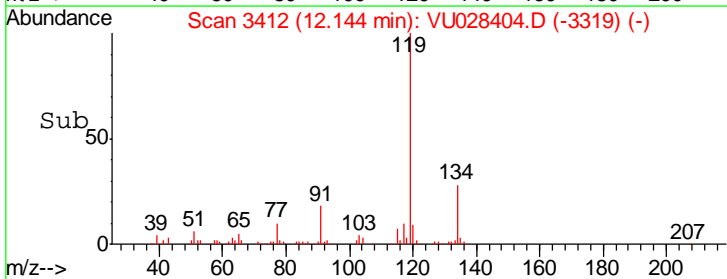
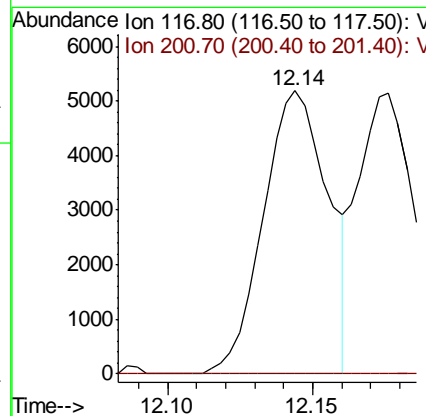
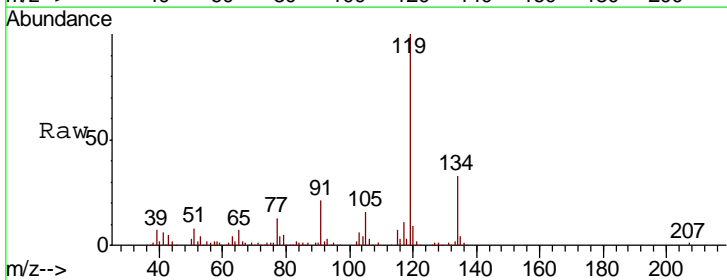
Instrument : MSVOA_U
 ClientSampled : MW-11

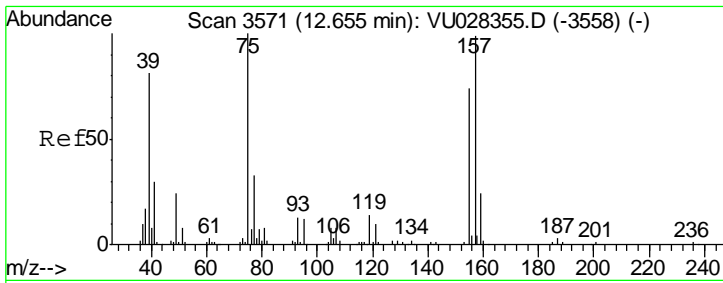
Tgt Ion	Resp	Lower	Upper
91	100		
92	14.5	26.2	78.5#
134	143.5	11.1	33.1#



#90
 Hexachloroethane
 Concen: 3.500 ug/l
 RT: 12.14 min Scan# 3412
 Delta R.T. -0.00 min
 Lab File: VU028404.D
 Acq: 29 Nov 2018 19:16

Tgt Ion	Resp	Lower	Upper
117	100		
201	0.0	37.7	113.1#

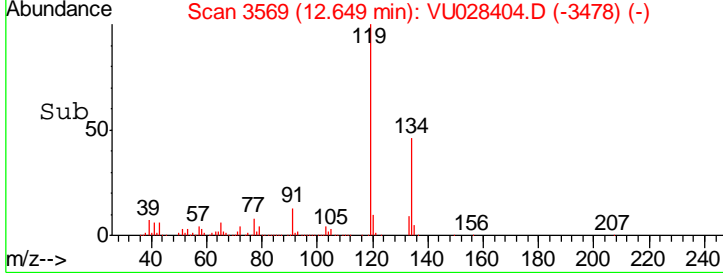
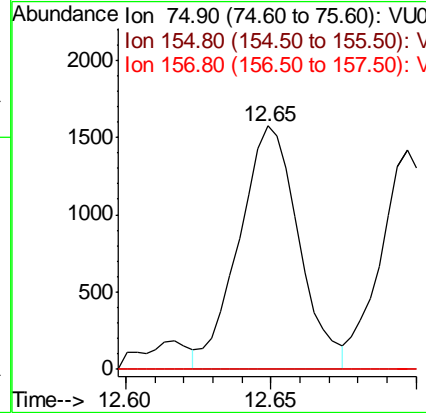
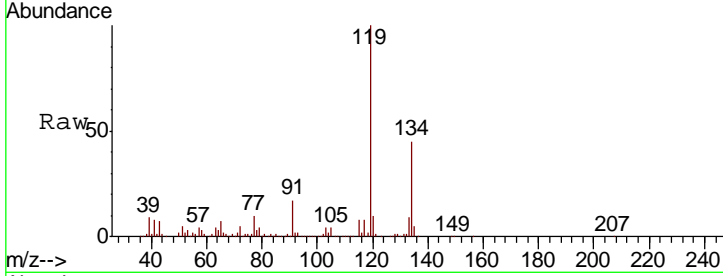




#92
 1,2-Dibromo-3-Chloropropane
 Concen: 1.403 ug/l
 RT: 12.65 min Scan# 3569
 Delta R.T. -0.01 min
 Lab File: VU028404.D
 Acq: 29 Nov 2018 19:16

Instrument :
 MSVOA_U
 ClientSampled :
 MW-11

Tgt Ion	Resp	Lower	Upper
75	100		
155	0.0	36.9	110.7#
157	0.0	47.5	142.5#



#95
 Naphthalene
 Concen: 13.177 ug/l
 RT: 13.74 min Scan# 3908
 Delta R.T. -0.00 min
 Lab File: VU028404.D
 Acq: 29 Nov 2018 19:16

Tgt Ion	Resp	Lower	Upper
128	100		
127	13.1	10.6	15.8
129	11.3	8.6	12.8

