

Data Path : Z:\voasrv\HPCHEM1\MSVOA\_U\Data\VU120121\  
 Data File : VU046038.D  
 Acq On : 01 Dec 2021 16:49  
 Operator : SY/MD  
 Sample : M4878-01 10X  
 Misc : 5.0mL/MSVOA\_U/WATER  
 ALS Vial : 7 Sample Multiplier: 1

Instrument :  
 MSVOA\_U  
 ClientSampleId :

Quant Time: Dec 02 02:44:43 2021  
 Quant Method : Z:\voasrv\HPCHEM1\MSVOA\_U\Method\SFAMULM112921WMA.M  
 Quant Title : VOC Analysis  
 QLast Update : Thu Dec 02 02:43:07 2021  
 Response via : Initial Calibration

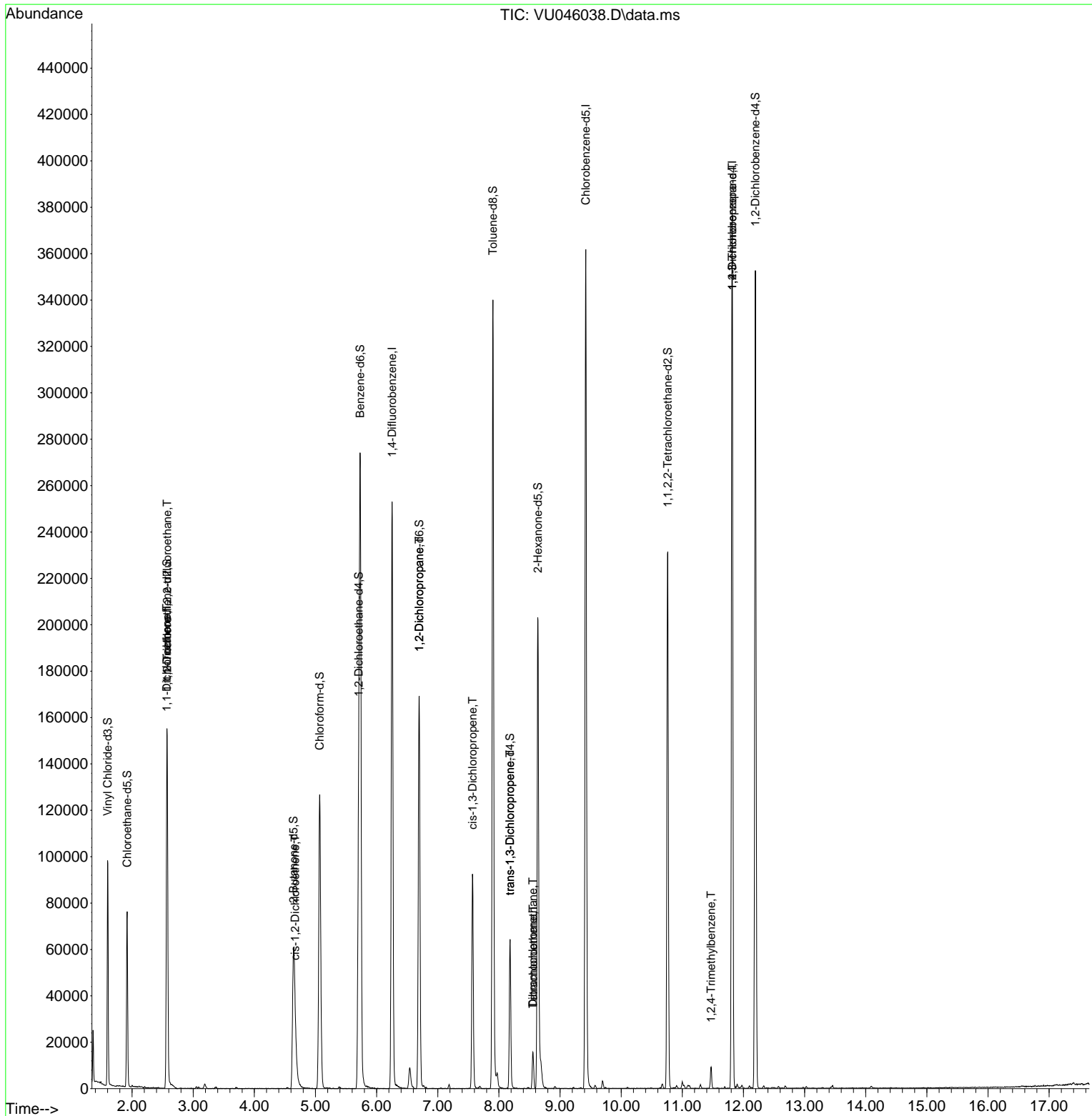
Compound	R.T.	QIon	Response	Conc	Units	Dev(Min)
-----						
Internal Standards						
1) 1,4-Difluorobenzene	6.253	114	208642	50.000	ug/L	0.00
28) Chlorobenzene-d5	9.420	117	208908	50.000	ug/L	0.00
58) 1,4-Dichlorobenzene-d4	11.816	152	101075	50.000	ug/L	0.00
System Monitoring Compounds						
4) Vinyl Chloride-d3	1.601	65	68129	39.640	ug/L	0.00
Spiked Amount	50.000	Range 60 - 135	Recovery =	79.280%		
7) Chloroethane-d5	1.919	69	54741	41.483	ug/L	0.00
Spiked Amount	50.000	Range 70 - 130	Recovery =	82.960%		
11) 1,1-Dichloroethene-d2	2.572	63	92646	30.028	ug/L	0.00
Spiked Amount	50.000	Range 60 - 125	Recovery =	60.060%		
21) 2-Butanone-d5	4.642	46	117238	85.809	ug/L	0.00
Spiked Amount	100.000	Range 40 - 130	Recovery =	85.810%		
24) Chloroform-d	5.070	84	117796	41.042	ug/L	0.00
Spiked Amount	50.000	Range 70 - 125	Recovery =	82.080%		
26) 1,2-Dichloroethane-d4	5.707	65	83354	43.274	ug/L	0.00
Spiked Amount	50.000	Range 70 - 125	Recovery =	86.540%		
32) Benzene-d6	5.732	84	258200	43.122	ug/L	0.00
Spiked Amount	50.000	Range 70 - 125	Recovery =	86.240%		
36) 1,2-Dichloropropane-d6	6.697	67	81069	43.687	ug/L	0.00
Spiked Amount	50.000	Range 70 - 120	Recovery =	87.380%		
41) Toluene-d8	7.903	98	230492	42.279	ug/L	0.00
Spiked Amount	50.000	Range 80 - 120	Recovery =	84.560%		
43) trans-1,3-Dichloroprop...	8.182	79	36463	40.704	ug/L	0.00
Spiked Amount	50.000	Range 60 - 125	Recovery =	81.400%		
47) 2-Hexanone-d5	8.636	63	74770	84.981	ug/L	0.00
Spiked Amount	100.000	Range 45 - 130	Recovery =	84.980%		
56) 1,1,2,2-Tetrachloroeth...	10.761	84	116392	41.359	ug/L	0.00
Spiked Amount	50.000	Range 65 - 120	Recovery =	82.720%		
66) 1,2-Dichlorobenzene-d4	12.195	152	90933	46.716	ug/L	0.00
Spiked Amount	50.000	Range 80 - 120	Recovery =	93.440%		
-----						
Target Compounds						Qvalue
10) 1,1,2-Trichloro-1,2,2-...	2.575	101	709	0.467	ug/L #	21
12) 1,1-Dichloroethene	2.568	96	680	0.471	ug/L #	1
20) cis-1,2-Dichloroethene	4.668	96	1762	1.064	ug/L	95
37) 1,2-Dichloropropane	6.697	63	8549	5.161	ug/L #	86
39) cis-1,3-Dichloropropene	7.568	75	2399	0.952	ug/L #	69
44) trans-1,3-Dichloropropene	8.182	75	1633	0.660	ug/L #	82
46) Tetrachloroethene	8.558	164	3638	2.972	ug/L	93
49) Dibromochloromethane	8.555	129	3497	2.004	ug/L #	10
60) 1,2,3-Trichloropropane	11.816	75	12412	5.602	ug/L #	66
63) 1,2,4-Trimethylbenzene	11.472	105	5430	0.990	ug/L	99
-----						

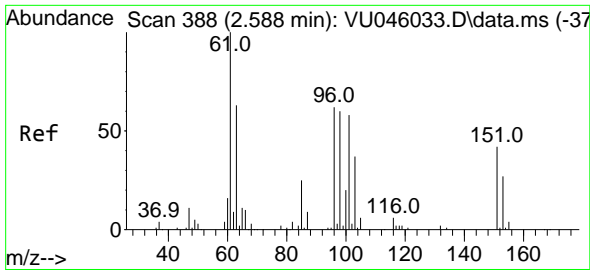
(#) = qualifier out of range (m) = manual integration (+) = signals summed

Data Path : Z:\voasrv\HPCHEM1\MSVOA\_U\Data\VU120121\  
 Data File : VU046038.D  
 Acq On : 01 Dec 2021 16:49  
 Operator : SY/MD  
 Sample : M4878-01 10X  
 Misc : 5.0mL/MSVOA\_U/WATER  
 ALS Vial : 7 Sample Multiplier: 1

Instrument :  
 MSVOA\_U  
 ClientSampleId :

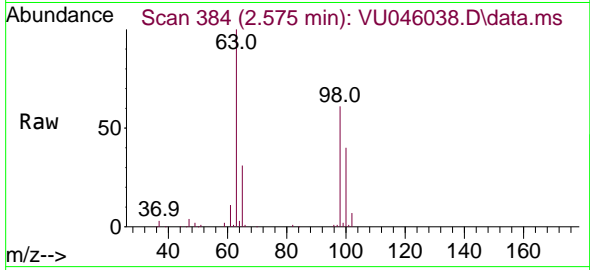
Quant Time: Dec 02 02:44:43 2021  
 Quant Method : Z:\voasrv\HPCHEM1\MSVOA\_U\Method\SFAMULM112921WMA.M  
 Quant Title : VOC Analysis  
 QLast Update : Thu Dec 02 02:43:07 2021  
 Response via : Initial Calibration



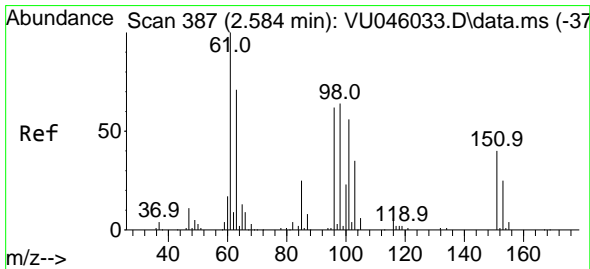
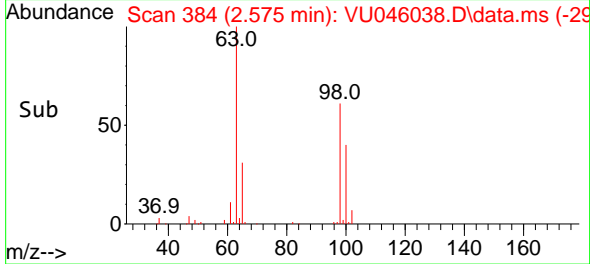
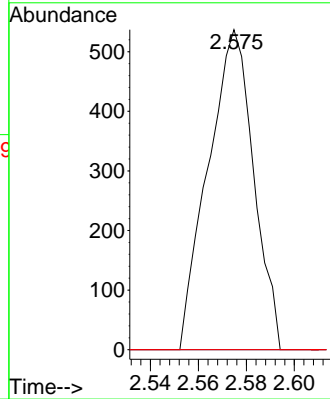


#10  
 1,1,2-Trichloro-1,2,2-trifluoroethane  
 Concen: 0.467 ug/L  
 RT: 2.575 min Scan# 384  
 Delta R.T. -0.013 min  
 Lab File: VU046038.D  
 Acq: 01 Dec 2021 16:49

Instrument : MSVOA\_U  
 ClientSampleId :

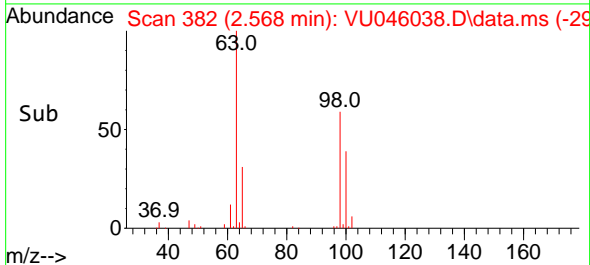
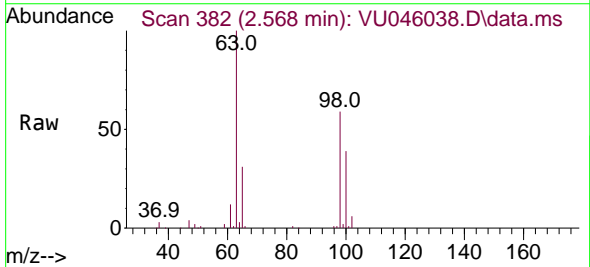
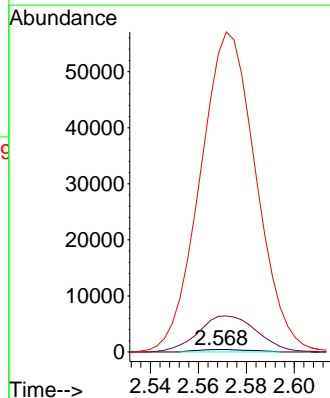


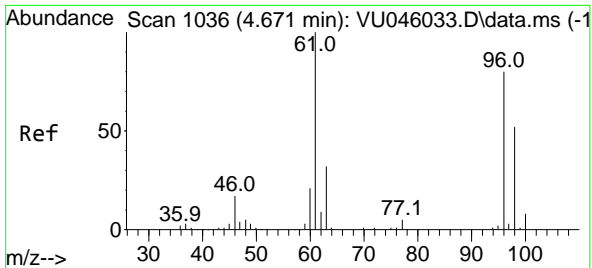
Tgt Ion: 101 Resp: 709  
 Ion Ratio Lower Upper  
 101 100  
 85 0.0 35.1 52.7#  
 151 0.0 56.7 85.1#



#12  
 1,1-Dichloroethene  
 Concen: 0.471 ug/L  
 RT: 2.568 min Scan# 382  
 Delta R.T. -0.016 min  
 Lab File: VU046038.D  
 Acq: 01 Dec 2021 16:49

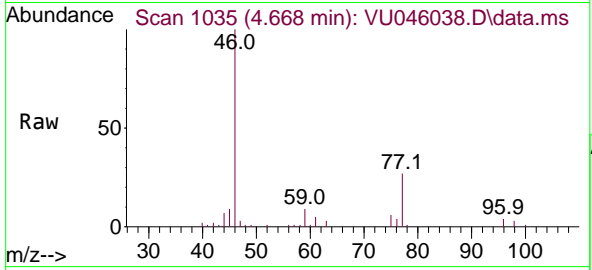
Tgt Ion: 96 Resp: 680  
 Ion Ratio Lower Upper  
 96 100  
 61 1498.8 118.6 220.2#  
 63 12564.2 93.0 172.8#





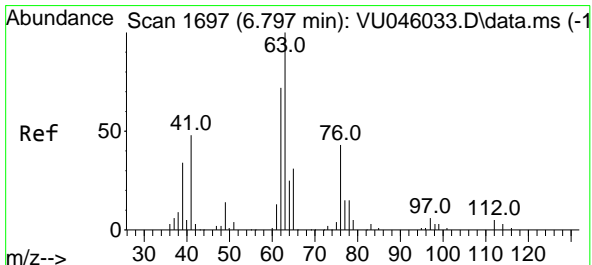
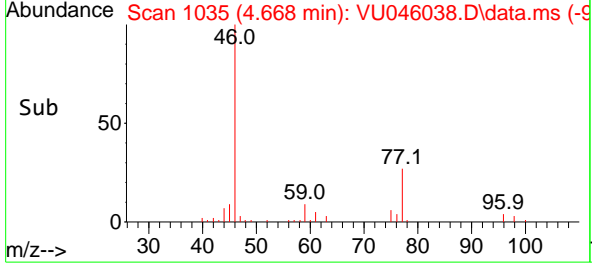
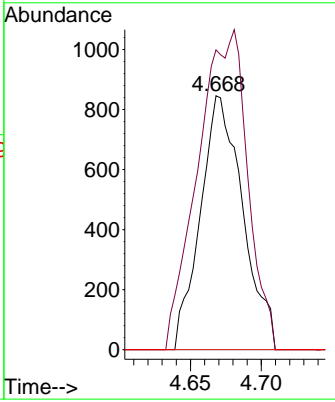
#20  
 cis-1,2-Dichloroethene  
 Concen: 1.064 ug/L  
 RT: 4.668 min Scan# 1035  
 Delta R.T. -0.003 min  
 Lab File: VU046038.D  
 Acq: 01 Dec 2021 16:49

Instrument : MSVOA\_U  
 ClientSampleId :



Tgt Ion: 96 Resp: 1762

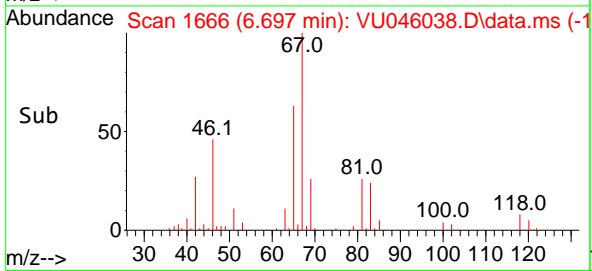
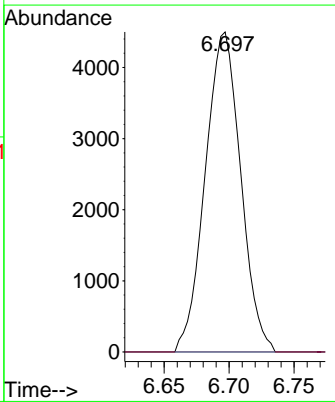
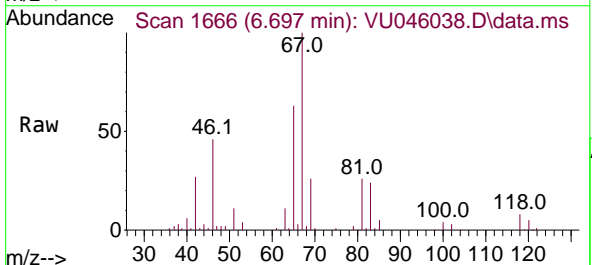
Ion	Ratio	Lower	Upper
96	100		
61	118.1	86.8	161.2
68	0.0	0.0	0.0

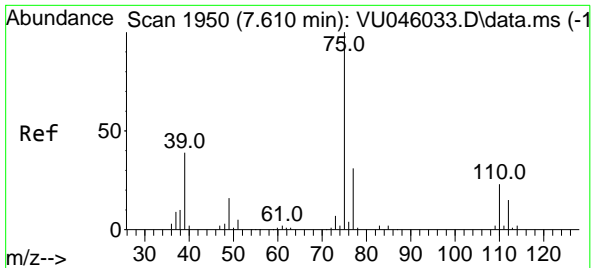


#37  
 1,2-Dichloropropane  
 Concen: 5.161 ug/L  
 RT: 6.697 min Scan# 1666  
 Delta R.T. -0.100 min  
 Lab File: VU046038.D  
 Acq: 01 Dec 2021 16:49

Tgt Ion: 63 Resp: 8549

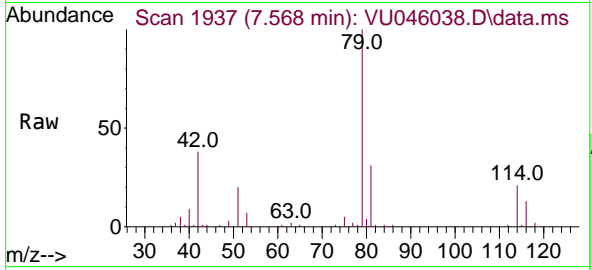
Ion	Ratio	Lower	Upper
63	100		
112	0.0	3.8	5.6



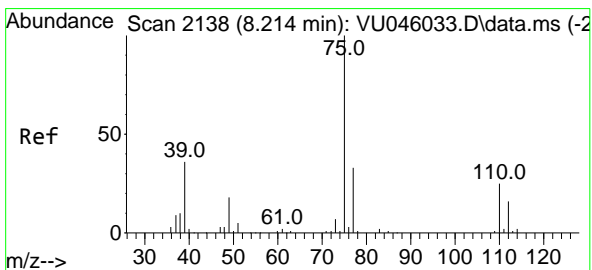
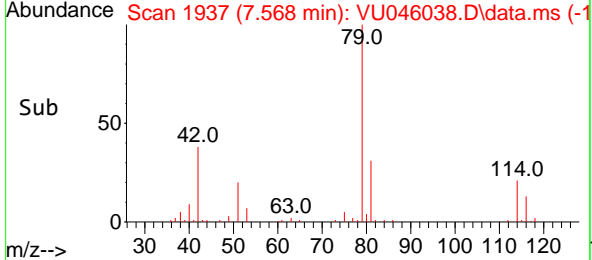
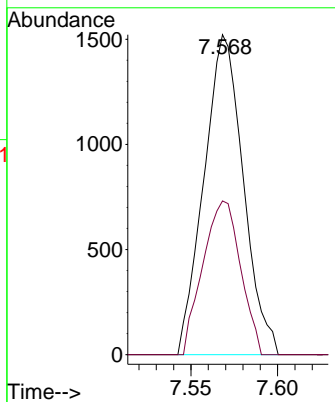


#39  
 cis-1,3-Dichloropropene  
 Concen: 0.952 ug/L  
 RT: 7.568 min Scan# 1950  
 Delta R.T. -0.042 min  
 Lab File: VU046038.D  
 Acq: 01 Dec 2021 16:49

Instrument : MSVOA\_U  
 ClientSampleId :

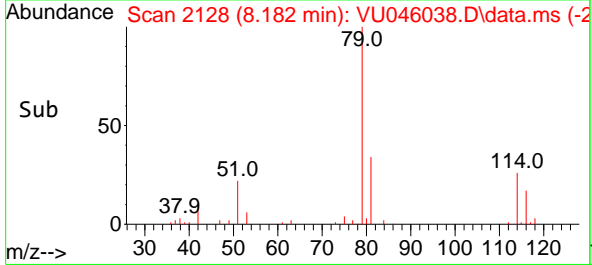
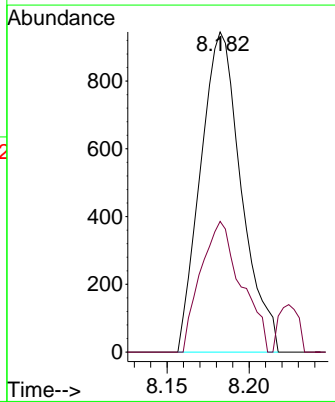
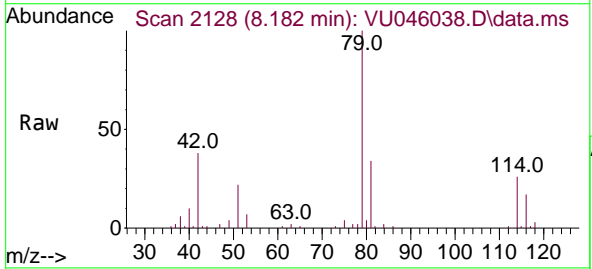


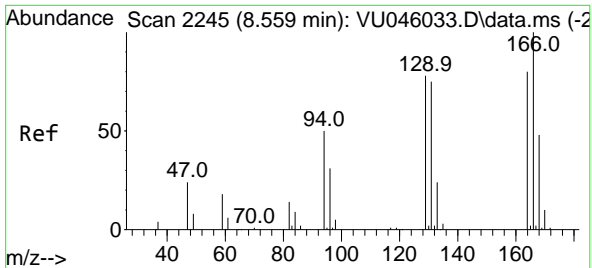
Tgt Ion: 75 Resp: 2399  
 Ion Ratio Lower Upper  
 75 100  
 77 48.0 21.8 40.6#



#44  
 trans-1,3-Dichloropropene  
 Concen: 0.660 ug/L  
 RT: 8.182 min Scan# 2128  
 Delta R.T. -0.032 min  
 Lab File: VU046038.D  
 Acq: 01 Dec 2021 16:49

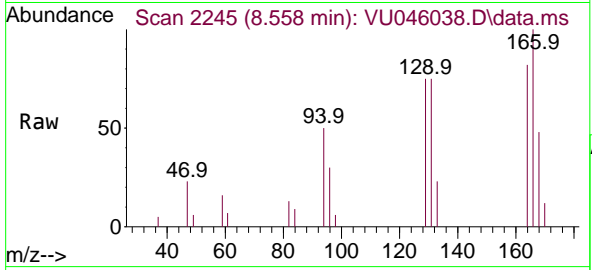
Tgt Ion: 75 Resp: 1633  
 Ion Ratio Lower Upper  
 75 100  
 77 40.8 21.7 40.3#





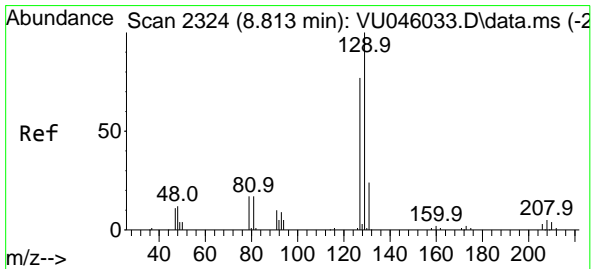
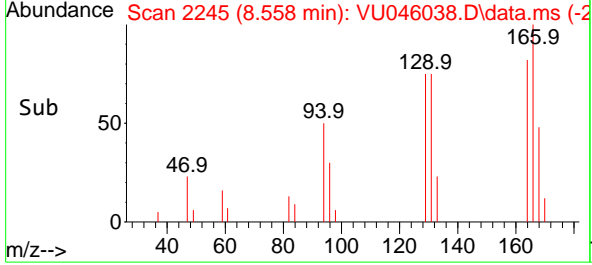
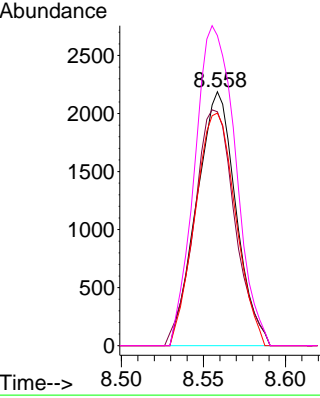
#46  
 Tetrachloroethene  
 Concen: 2.972 ug/L  
 RT: 8.558 min Scan# 21  
 Delta R.T. -0.000 min  
 Lab File: VU046038.D  
 Acq: 01 Dec 2021 16:49

Instrument : MSVOA\_U  
 ClientSampleId :

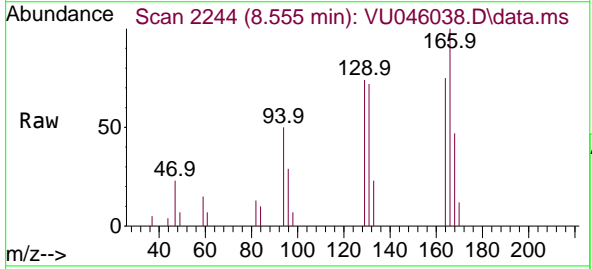


Tgt Ion:164 Resp: 3638

Ion	Ratio	Lower	Upper
164	100		
129	92.2	71.1	132.1
131	91.6	67.8	126.0
166	122.2	90.6	168.2

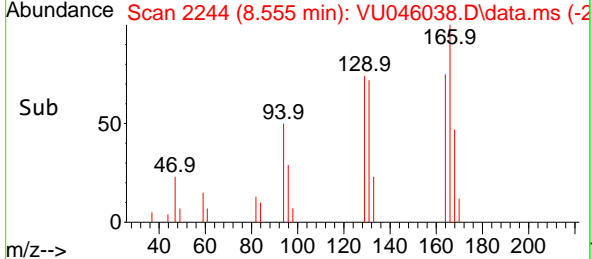
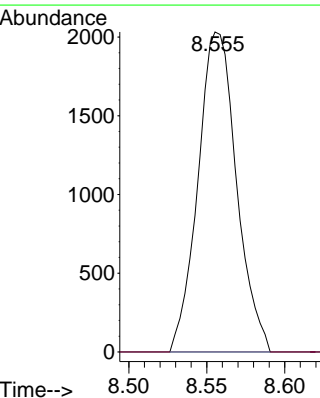


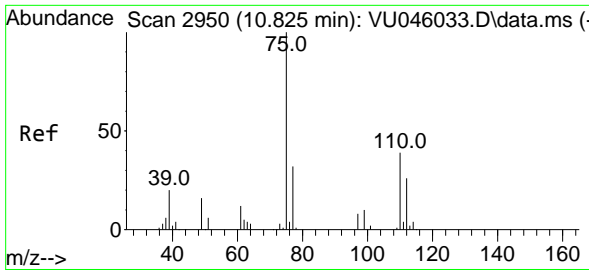
#49  
 Dibromochloromethane  
 Concen: 2.004 ug/L  
 RT: 8.555 min Scan# 2244  
 Delta R.T. -0.257 min  
 Lab File: VU046038.D  
 Acq: 01 Dec 2021 16:49



Tgt Ion:129 Resp: 3497

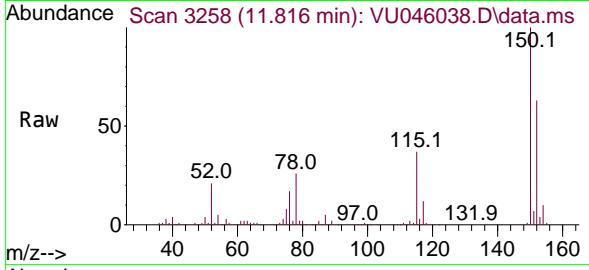
Ion	Ratio	Lower	Upper
129	100		
127	0.0	55.6	103.4#



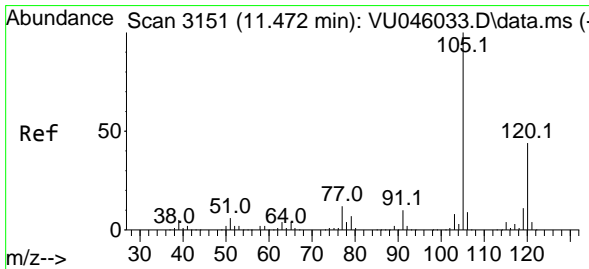
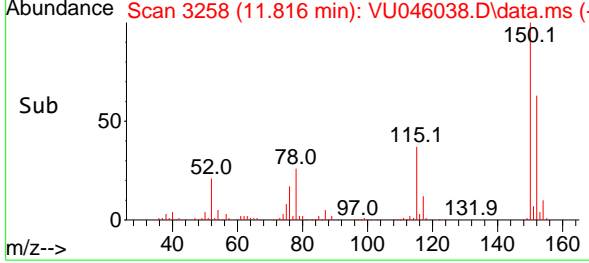
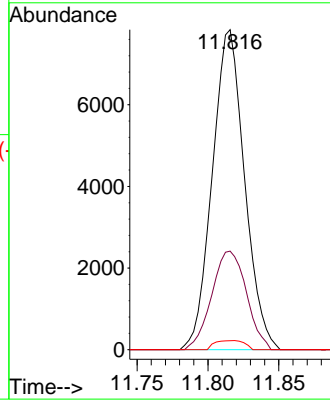


#60  
 1,2,3-Trichloropropane  
 Concen: 5.602 ug/L  
 RT: 11.816 min Scan# 3151  
 Delta R.T. 0.990 min  
 Lab File: VU046038.D  
 Acq: 01 Dec 2021 16:49

Instrument : MSVOA\_U  
 ClientSampleId :



Tgt Ion: 75 Resp: 12412  
 Ion Ratio Lower Upper  
 75 100  
 77 33.1 26.4 39.6  
 110 2.6 32.4 48.6#



#63  
 1,2,4-Trimethylbenzene  
 Concen: 0.990 ug/L  
 RT: 11.472 min Scan# 3151  
 Delta R.T. -0.000 min  
 Lab File: VU046038.D  
 Acq: 01 Dec 2021 16:49

Tgt Ion: 105 Resp: 5430  
 Ion Ratio Lower Upper  
 105 100  
 120 43.6 35.2 52.8

