

Data Path : Z:\voasrv\HPCHEM1\MSVOA_U\Data\VU120221\
 Data File : VU046056.D
 Acq On : 02 Dec 2021 16:42
 Operator : SY/MD
 Sample : M4870-08
 Misc : 5.0mL/MSVOA_U/WATER
 ALS Vial : 16 Sample Multiplier: 1

Instrument :
 MSVOA_U
 ClientSampleId :
 BGKP5

Quant Time: Dec 03 05:12:22 2021
 Quant Method : Z:\voasrv\HPCHEM1\MSVOA_U\Method\SFAMULM112921WMA.M
 Quant Title : VOC Analysis
 QLast Update : Fri Dec 03 05:08:36 2021
 Response via : Initial Calibration

Compound	R.T.	QIon	Response	Conc	Units	Dev(Min)
Internal Standards						
1) 1,4-Difluorobenzene	6.250	114	236049	50.000	ug/L	0.00
28) Chlorobenzene-d5	9.420	117	234788	50.000	ug/L	0.00
58) 1,4-Dichlorobenzene-d4	11.812	152	121515	50.000	ug/L	0.00
System Monitoring Compounds						
4) Vinyl Chloride-d3	1.600	65	66436	34.167	ug/L	0.00
Spiked Amount	50.000	Range 60 - 135	Recovery =	68.340%		
7) Chloroethane-d5	1.915	69	53810	36.043	ug/L	0.00
Spiked Amount	50.000	Range 70 - 130	Recovery =	72.080%		
11) 1,1-Dichloroethene-d2	2.571	63	95614	27.392	ug/L	0.00
Spiked Amount	50.000	Range 60 - 125	Recovery =	54.780%#		
21) 2-Butanone-d5	4.632	46	132742	85.876	ug/L	0.00
Spiked Amount	100.000	Range 40 - 130	Recovery =	85.880%		
24) Chloroform-d	5.066	84	137618	42.381	ug/L	0.00
Spiked Amount	50.000	Range 70 - 125	Recovery =	84.760%		
26) 1,2-Dichloroethane-d4	5.703	65	93302	42.815	ug/L	0.00
Spiked Amount	50.000	Range 70 - 125	Recovery =	85.620%		
32) Benzene-d6	5.729	84	290789	43.211	ug/L	0.00
Spiked Amount	50.000	Range 70 - 125	Recovery =	86.420%		
36) 1,2-Dichloropropane-d6	6.693	67	93941	45.043	ug/L	0.00
Spiked Amount	50.000	Range 70 - 120	Recovery =	90.080%		
41) Toluene-d8	7.899	98	263850	43.063	ug/L	0.00
Spiked Amount	50.000	Range 80 - 120	Recovery =	86.120%		
43) trans-1,3-Dichloroprop...	8.179	79	43446	43.154	ug/L	0.00
Spiked Amount	50.000	Range 60 - 125	Recovery =	86.300%		
47) 2-Hexanone-d5	8.632	63	92656	93.701	ug/L	0.00
Spiked Amount	100.000	Range 45 - 130	Recovery =	93.700%		
56) 1,1,2,2-Tetrachloroeth...	10.758	84	134435	42.504	ug/L	0.00
Spiked Amount	50.000	Range 65 - 120	Recovery =	85.000%		
66) 1,2-Dichlorobenzene-d4	12.195	152	107003	45.725	ug/L	0.00
Spiked Amount	50.000	Range 80 - 120	Recovery =	91.440%		
Target Compounds						
13) Acetone	2.645	43	331075	171.378	ug/L	97
20) cis-1,2-Dichloroethene	4.674	96	6918	3.691	ug/L	99
22) 2-Butanone	4.713	43	46678	22.196	ug/L	99
27) 1,2-Dichloroethane	5.796	62	2615	1.010	ug/L #	73
33) Benzene	5.777	78	12854	1.809	ug/L	100
34) Trichloroethene	6.545	95	7362	3.933	ug/L	98
40) 4-Methyl-2-pentanone	7.793	43	15109	5.524	ug/L	97
42) Toluene	7.970	91	24427	3.204	ug/L	96
52) Ethylbenzene	9.571	91	20029	2.441	ug/L	99
53) m,p-Xylene	9.693	106	28394	8.872	ug/L	98
54) o-xylene	10.102	106	13498	4.347	ug/L	97
55) Styrene	10.114	104	6515	1.229	ug/L	85
61) Isopropylbenzene	10.484	105	7998	1.012	ug/L	99
62) 1,3,5-Trimethylbenzene	11.089	105	8204	1.245	ug/L	97
63) 1,2,4-Trimethylbenzene	11.468	105	28671	4.349	ug/L	99
67) 1,2-Dichlorobenzene	12.214	146	3203	0.847	ug/L	91

(#) = qualifier out of range (m) = manual integration (+) = signals summed

Instrument :

MSVOA_U

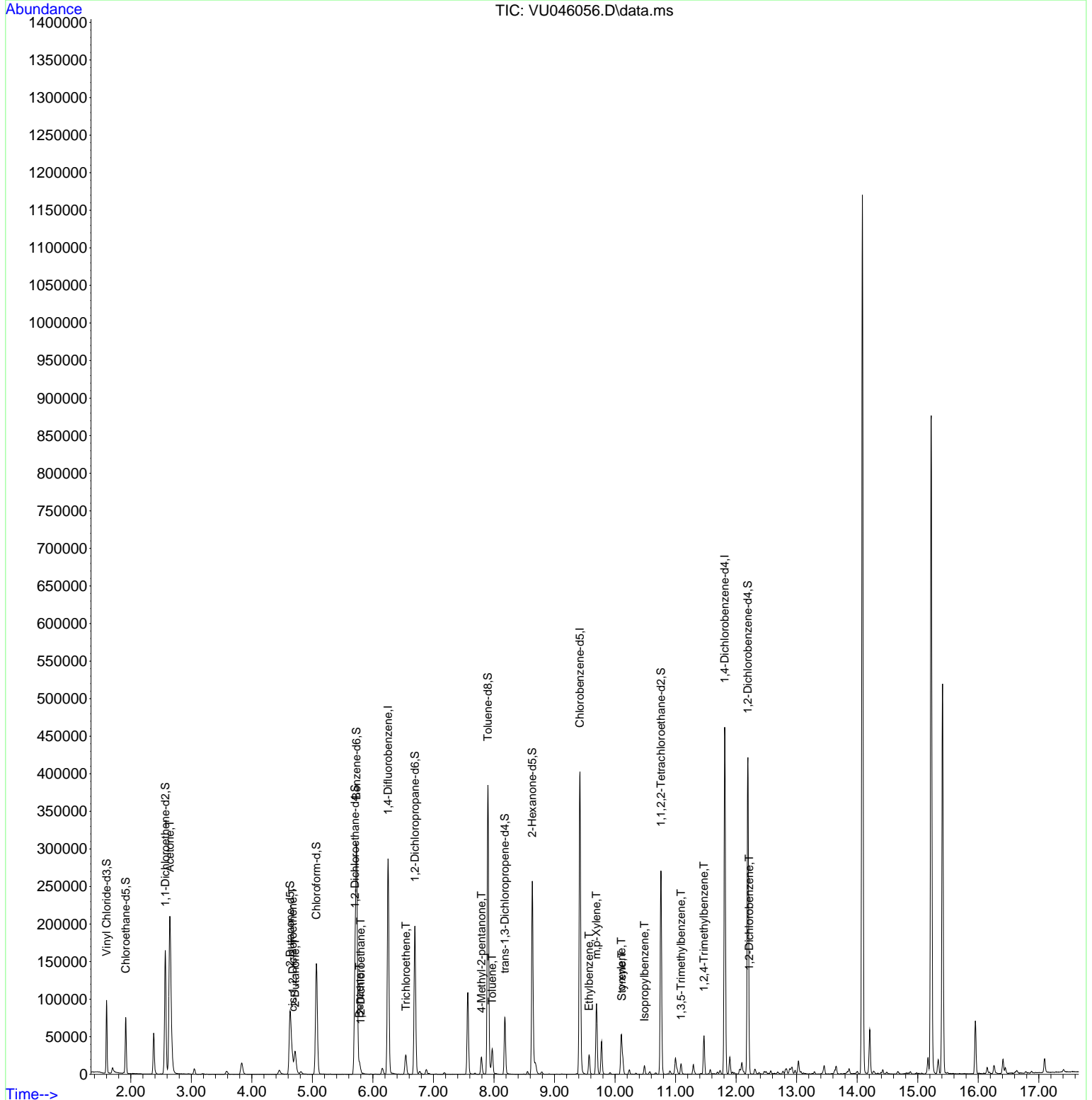
ClientSampleId :

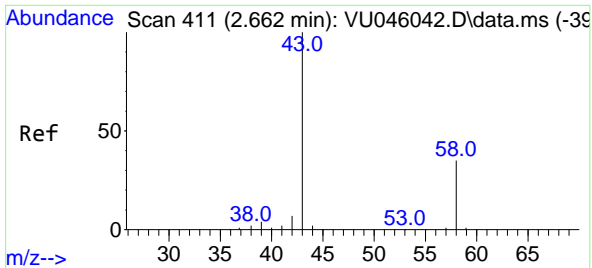
BGKP5

Data Path : Z:\voasrv\HPCHEM1\MSVOA_U\Data\VU120221\
 Data File : VU046056.D
 Acq On : 02 Dec 2021 16:42
 Operator : SY/MD
 Sample : M4870-08
 Misc : 5.0mL/MSVOA_U/WATER
 ALS Vial : 16 Sample Multiplier: 1

Instrument :
 MSVOA_U
 ClientSampleId :
 BGKP5

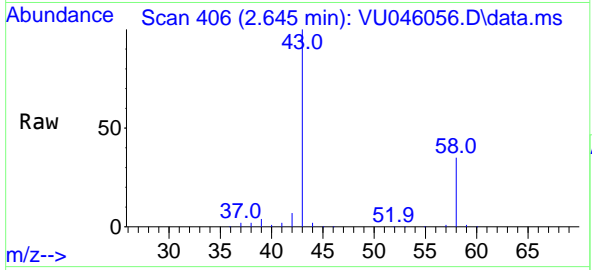
Quant Time: Dec 03 05:12:22 2021
 Quant Method : Z:\voasrv\HPCHEM1\MSVOA_U\Method\SFAMULM112921WMA.M
 Quant Title : VOC Analysis
 QLast Update : Fri Dec 03 05:08:36 2021
 Response via : Initial Calibration



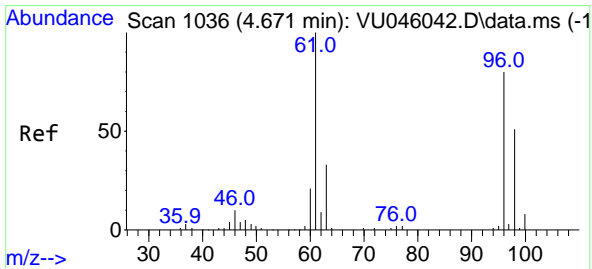
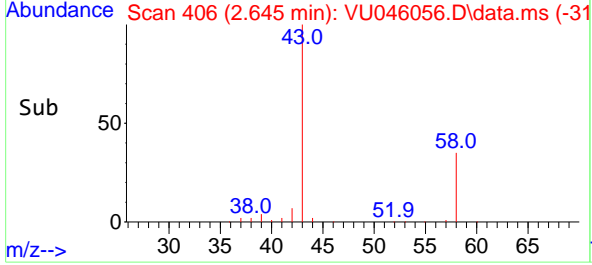
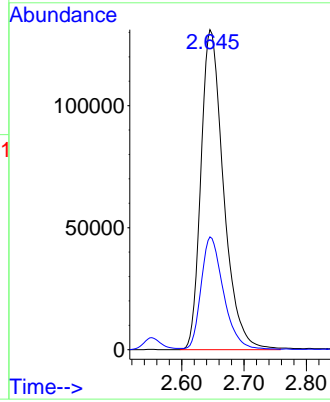


#13
 Acetone
 Concen: 171.378 ug/L
 RT: 2.645 min Scan# 406
 Delta R.T. -0.016 min
 Lab File: VU046056.D
 Acq: 02 Dec 2021 16:42

Instrument :
 MSVOA_U
 ClientSampleId :
 BGKP5

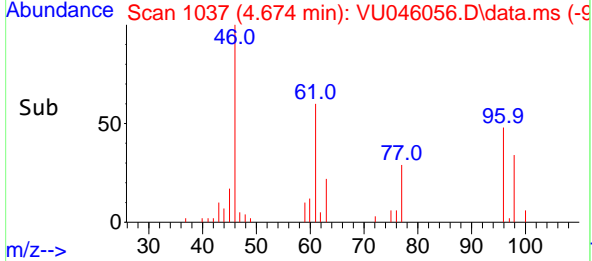
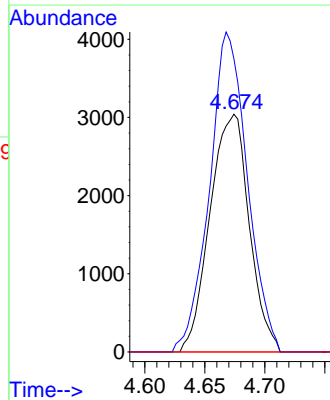
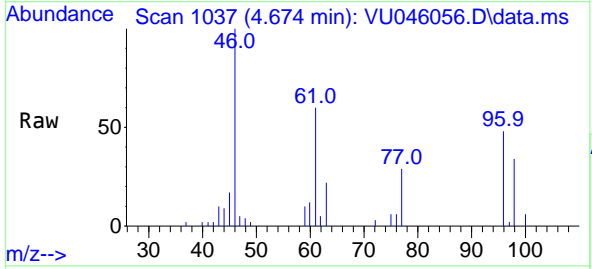


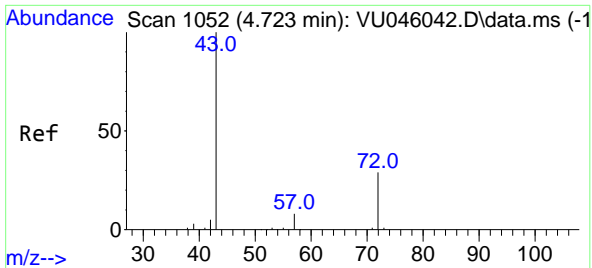
Tgt Ion: 43 Resp: 331075
 Ion Ratio Lower Upper
 43 100
 58 34.9 0.0 66.8



#20
 cis-1,2-Dichloroethene
 Concen: 3.691 ug/L
 RT: 4.674 min Scan# 1037
 Delta R.T. 0.003 min
 Lab File: VU046056.D
 Acq: 02 Dec 2021 16:42

Tgt Ion: 96 Resp: 6918
 Ion Ratio Lower Upper
 96 100
 61 123.2 86.8 161.2
 68 0.0 0.0 0.0

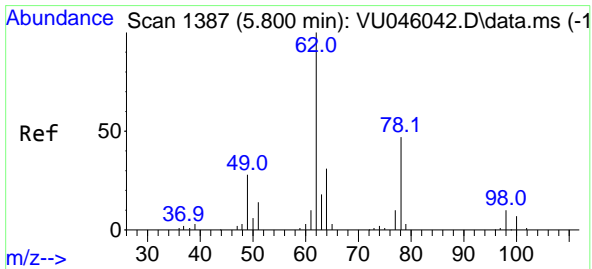
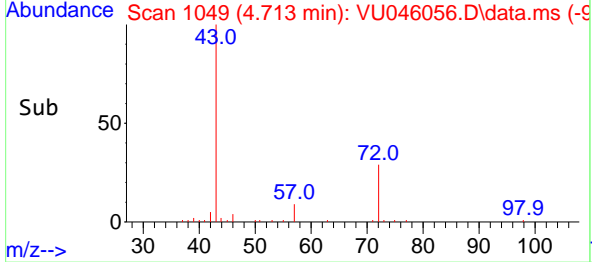
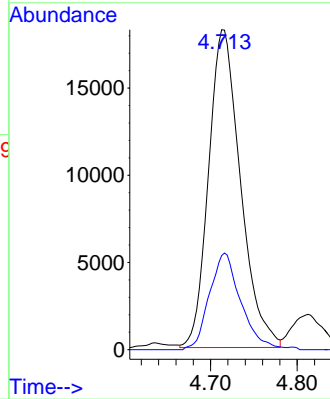
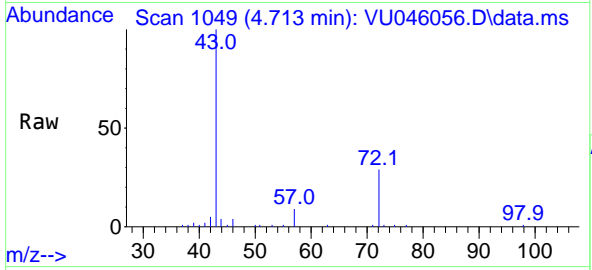




#22
 2-Butanone
 Concen: 22.196 ug/L
 RT: 4.713 min Scan# 1049
 Delta R.T. -0.010 min
 Lab File: VU046056.D
 Acq: 02 Dec 2021 16:42

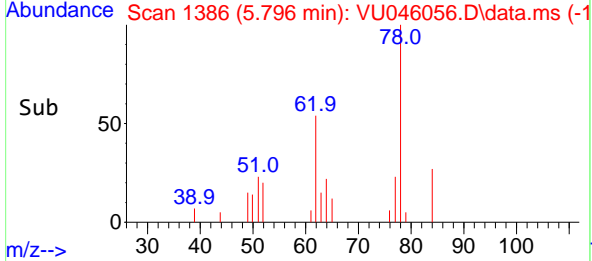
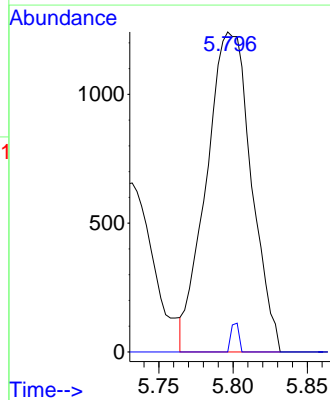
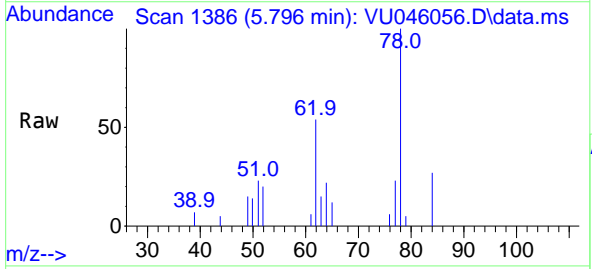
Instrument : MSVOA_U
 ClientSampleId : BGKP5

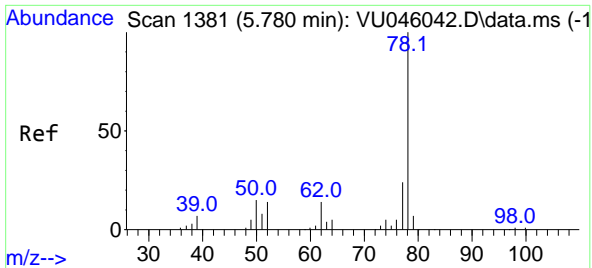
Tgt Ion: 43 Resp: 46678
 Ion Ratio Lower Upper
 43 100
 72 29.9 14.5 43.6



#27
 1,2-Dichloroethane
 Concen: 1.010 ug/L
 RT: 5.796 min Scan# 1386
 Delta R.T. -0.003 min
 Lab File: VU046056.D
 Acq: 02 Dec 2021 16:42

Tgt Ion: 62 Resp: 2615
 Ion Ratio Lower Upper
 62 100
 98 0.0 7.9 11.9#

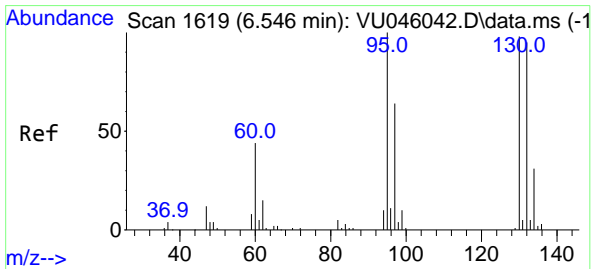
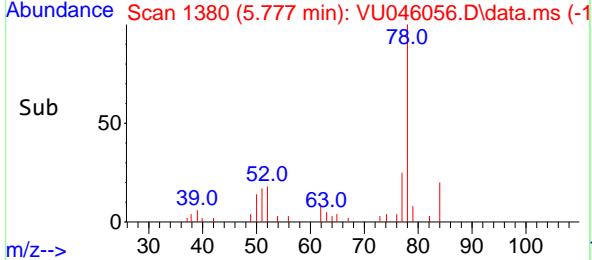
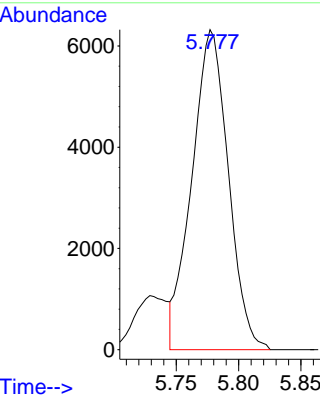
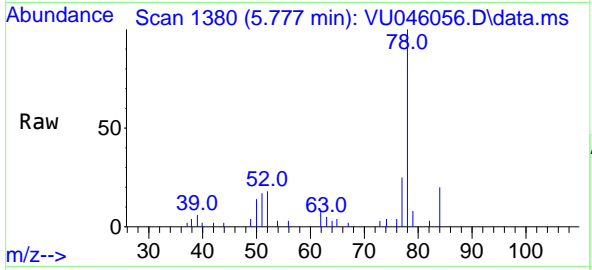




#33
Benzene
Concen: 1.809 ug/L
RT: 5.777 min Scan# 11
Delta R.T. -0.003 min
Lab File: VU046056.D
Acq: 02 Dec 2021 16:42

Instrument : MSVOA_U
ClientSampleId : BGKP5

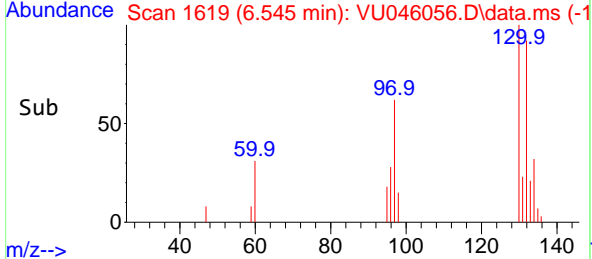
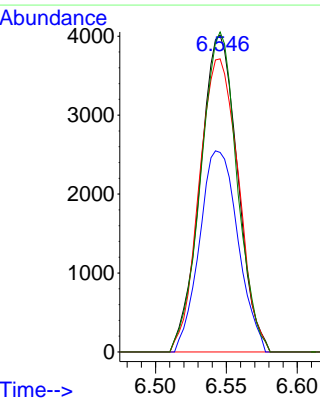
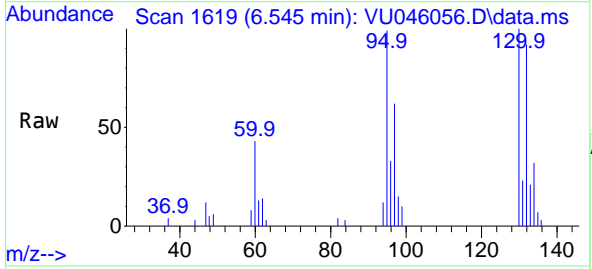
Tgt Ion: 78 Resp: 12854

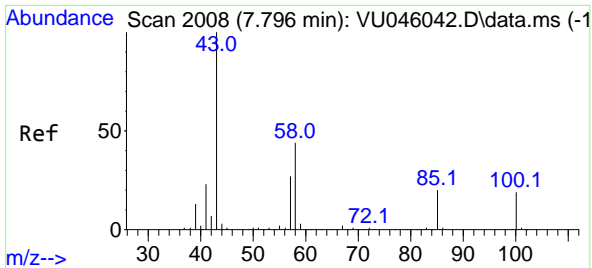


#34
Trichloroethene
Concen: 3.933 ug/L
RT: 6.545 min Scan# 1619
Delta R.T. -0.000 min
Lab File: VU046056.D
Acq: 02 Dec 2021 16:42

Tgt Ion: 95 Resp: 7362

Ion	Ratio	Lower	Upper
95	100		
97	63.0	44.1	81.9
132	92.5	66.8	124.0
130	101.0	69.0	128.1



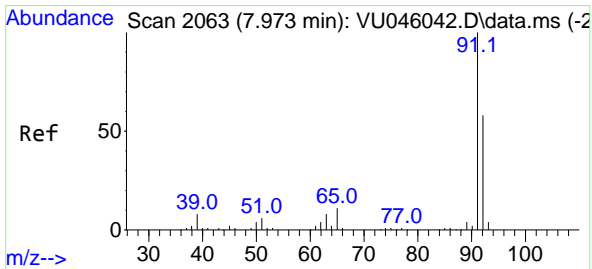
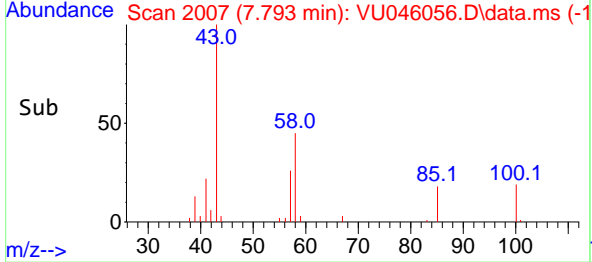
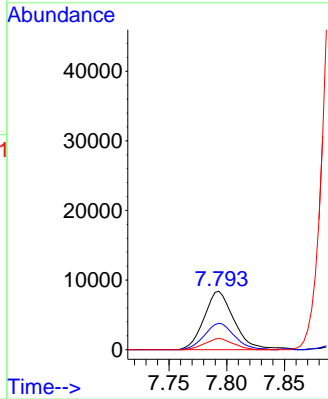
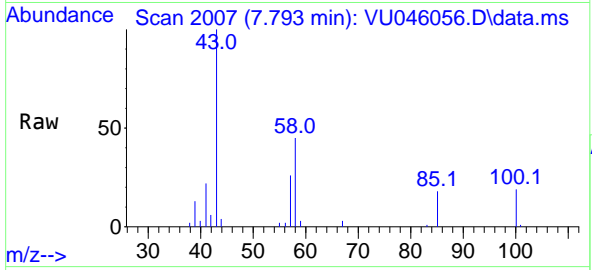


#40
 4-Methyl-2-pentanone
 Concen: 5.524 ug/L
 RT: 7.793 min Scan# 2007
 Delta R.T. -0.003 min
 Lab File: VU046056.D
 Acq: 02 Dec 2021 16:42

Instrument : MSVOA_U
 ClientSampleId : BGKP5

Tgt Ion: 43 Resp: 15109

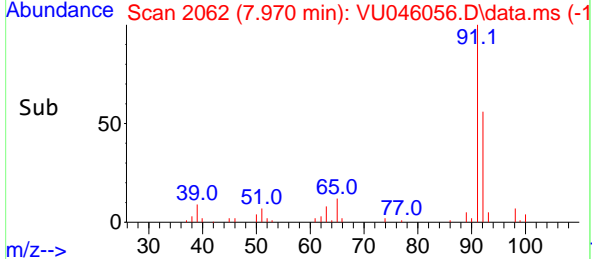
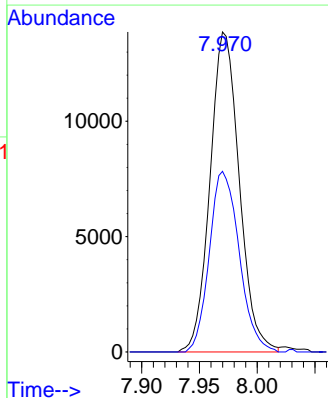
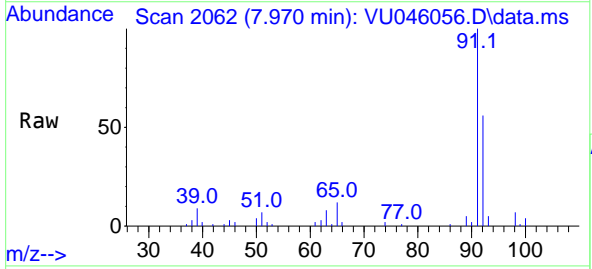
Ion	Ratio	Lower	Upper
43	100		
58	45.1	34.2	51.4
100	18.0	14.5	21.7

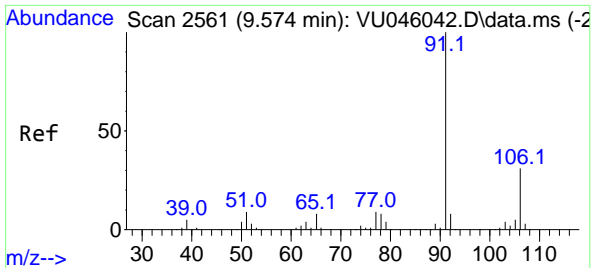


#42
 Toluene
 Concen: 3.204 ug/L
 RT: 7.970 min Scan# 2062
 Delta R.T. -0.003 min
 Lab File: VU046056.D
 Acq: 02 Dec 2021 16:42

Tgt Ion: 91 Resp: 24427

Ion	Ratio	Lower	Upper
91	100		
92	56.5	41.9	77.7

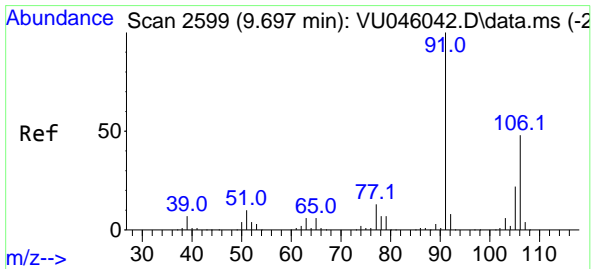
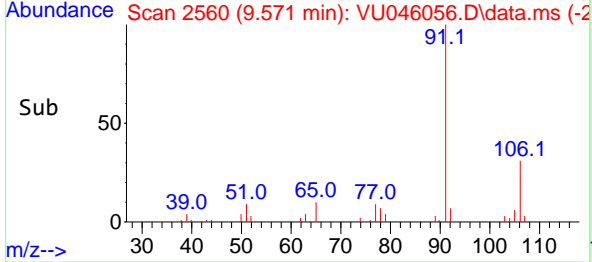
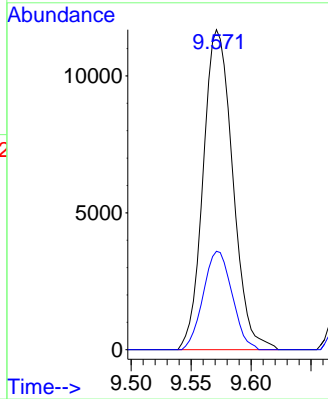
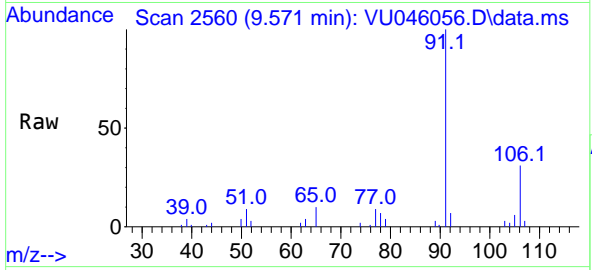




#52
 Ethylbenzene
 Concen: 2.441 ug/L
 RT: 9.571 min Scan# 2560
 Delta R.T. -0.003 min
 Lab File: VU046056.D
 Acq: 02 Dec 2021 16:42

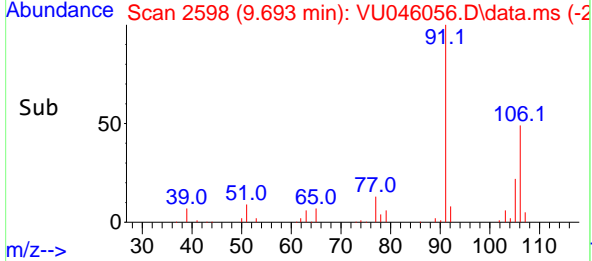
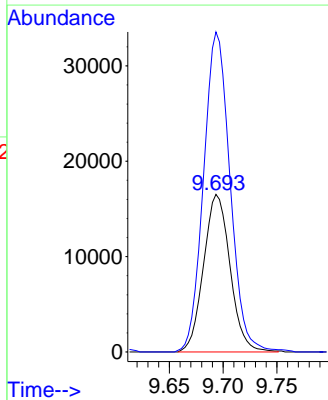
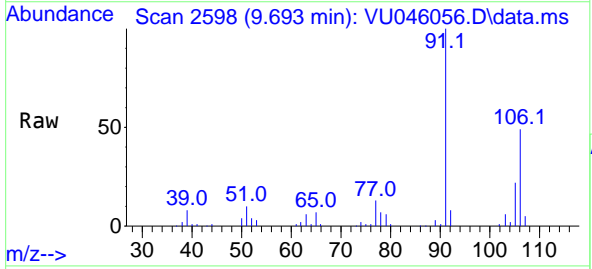
Instrument : MSVOA_U
 ClientSampleId : BGKP5

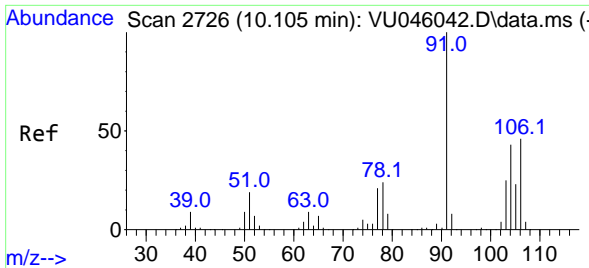
Tgt Ion: 91 Resp: 20029
 Ion Ratio Lower Upper
 91 100
 106 30.7 21.1 39.3



#53
 m,p-Xylene
 Concen: 8.872 ug/L
 RT: 9.693 min Scan# 2598
 Delta R.T. -0.003 min
 Lab File: VU046056.D
 Acq: 02 Dec 2021 16:42

Tgt Ion: 106 Resp: 28394
 Ion Ratio Lower Upper
 106 100
 91 203.0 144.3 268.1

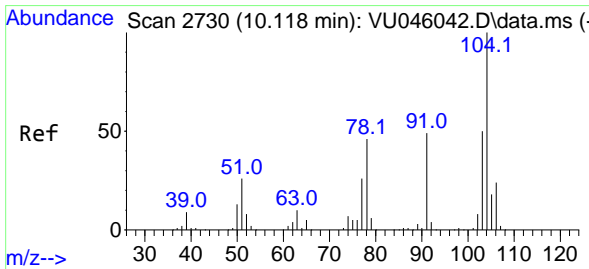
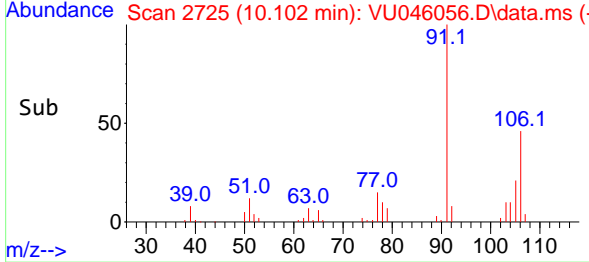
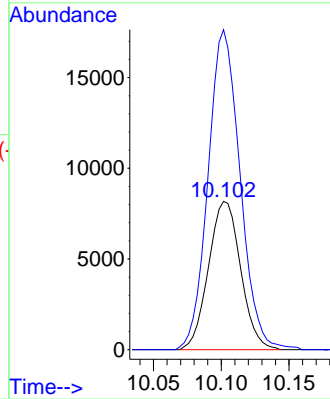
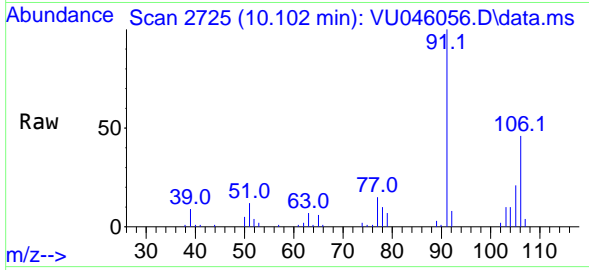




#54
 o-xylene
 Concen: 4.347 ug/L
 RT: 10.102 min Scan# 2725
 Delta R.T. -0.003 min
 Lab File: VU046056.D
 Acq: 02 Dec 2021 16:42

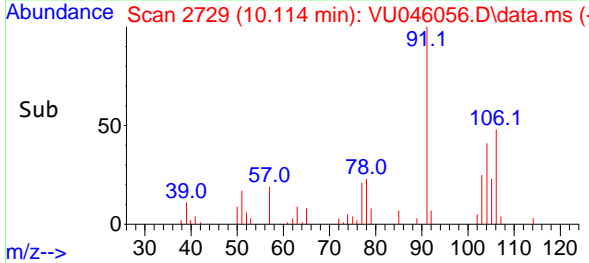
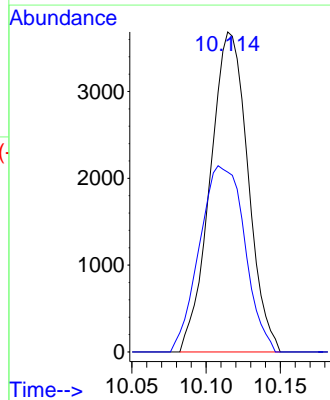
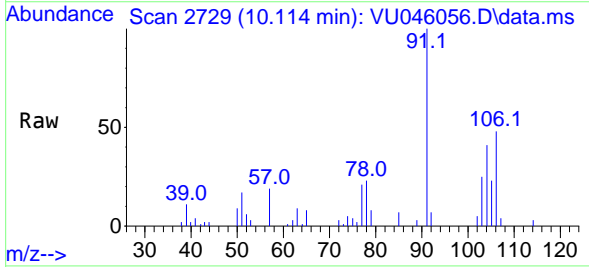
Instrument : MSVOA_U
 ClientSampleId : BGKP5

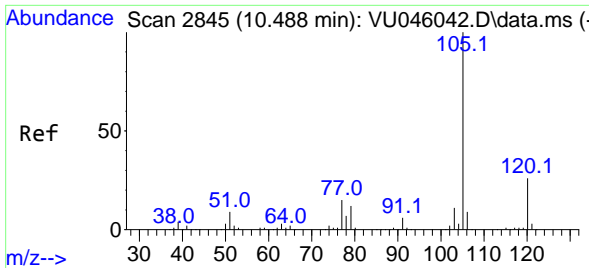
Tgt Ion:106 Resp: 13498
 Ion Ratio Lower Upper
 106 100
 91 215.8 154.2 286.4



#55
 Styrene
 Concen: 1.229 ug/L
 RT: 10.114 min Scan# 2729
 Delta R.T. -0.003 min
 Lab File: VU046056.D
 Acq: 02 Dec 2021 16:42

Tgt Ion:104 Resp: 6515
 Ion Ratio Lower Upper
 104 100
 78 56.2 32.6 60.5



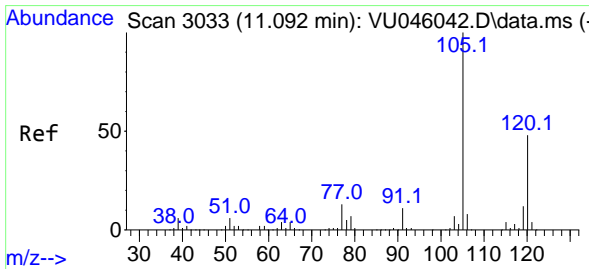
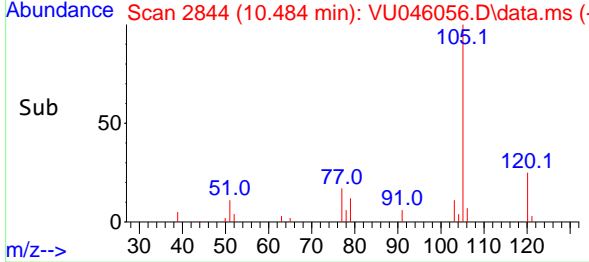
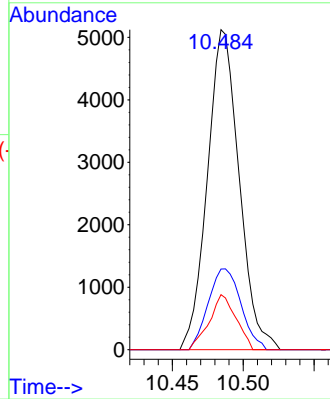
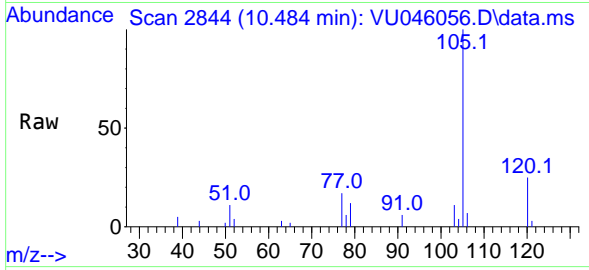


#61
 Isopropylbenzene
 Concen: 1.012 ug/L
 RT: 10.484 min Scan# 21
 Delta R.T. -0.003 min
 Lab File: VU046056.D
 Acq: 02 Dec 2021 16:42

Instrument :
 MSVOA_U
 ClientSampleId :
 BGKP5

Tgt Ion:105 Resp: 7998

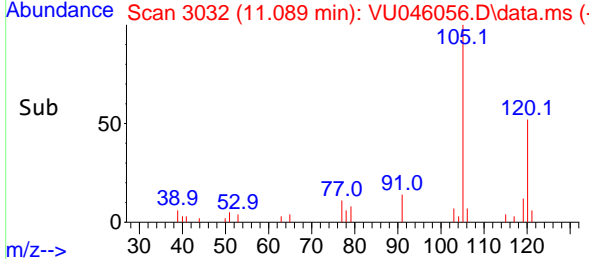
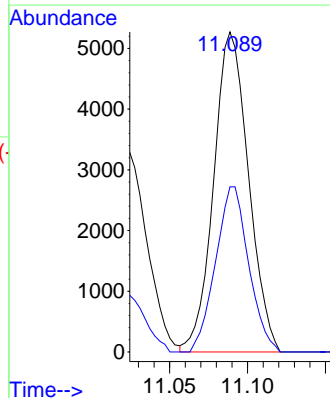
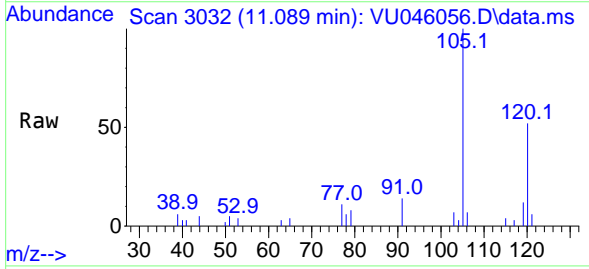
Ion	Ratio	Lower	Upper
105	100		
120	26.0	20.7	31.1
77	14.5	12.2	18.4

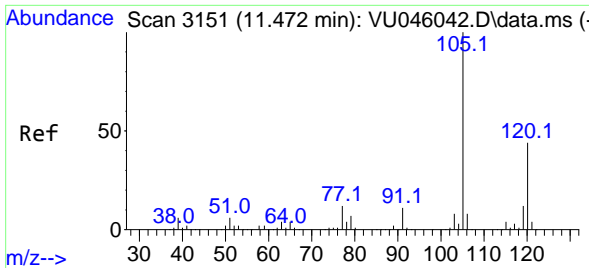


#62
 1,3,5-Trimethylbenzene
 Concen: 1.245 ug/L
 RT: 11.089 min Scan# 3032
 Delta R.T. -0.003 min
 Lab File: VU046056.D
 Acq: 02 Dec 2021 16:42

Tgt Ion:105 Resp: 8204

Ion	Ratio	Lower	Upper
105	100		
120	49.0	37.8	56.6

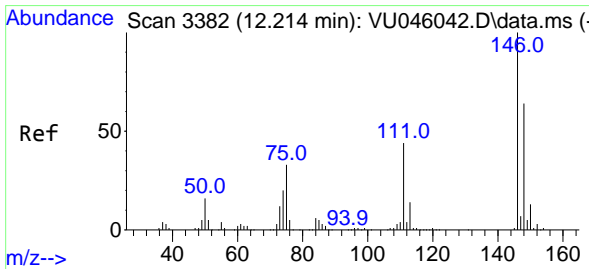
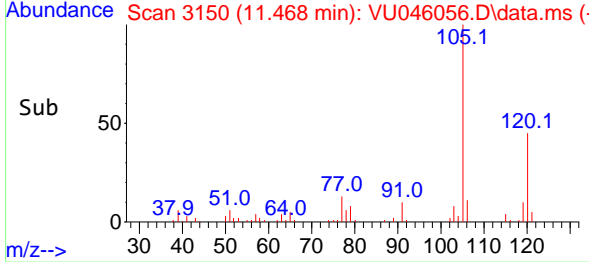
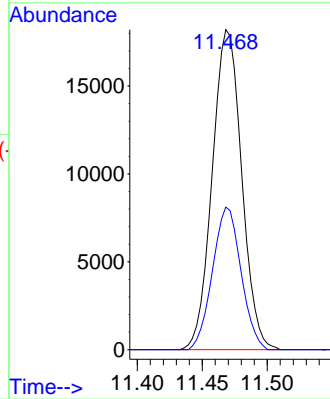
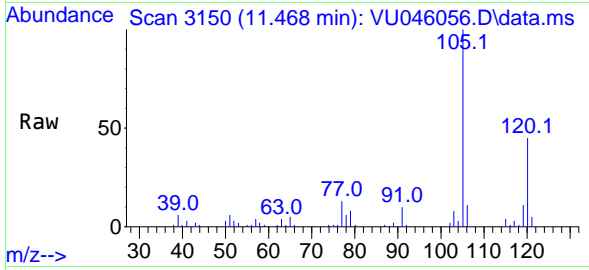




#63
 1,2,4-Trimethylbenzene
 Concen: 4.349 ug/L
 RT: 11.468 min Scan# 3150
 Delta R.T. -0.003 min
 Lab File: VU046056.D
 Acq: 02 Dec 2021 16:42

Instrument : MSVOA_U
 ClientSampleId : BGKP5

Tgt Ion:105 Resp: 28671
 Ion Ratio Lower Upper
 105 100
 120 43.1 35.2 52.8



#67
 1,2-Dichlorobenzene
 Concen: 0.847 ug/L
 RT: 12.214 min Scan# 3382
 Delta R.T. -0.000 min
 Lab File: VU046056.D
 Acq: 02 Dec 2021 16:42

Tgt Ion:146 Resp: 3203
 Ion Ratio Lower Upper
 146 100
 111 51.1 35.7 53.5
 148 70.6 51.2 76.8

