

Data Path : Z:\voasrv\HPCHEM1\MSVOA\_U\Data\VU120321\  
 Data File : VU046075.D  
 Acq On : 03 Dec 2021 15:47  
 Operator : SY/MD  
 Sample : M4878-03  
 Misc : 5.0mL/MSVOA\_U/WATER  
 ALS Vial : 10 Sample Multiplier: 1

Instrument :  
 MSVOA\_U  
 ClientSampleId :  
 VHBLK001

Integration Parameters: LSCINT.P

Integrator: RTE  
 Smoothing : OFF  
 Sampling : 1  
 Start Thrs: 0.2  
 Stop Thrs : 0

Filtering: 5  
 Min Area: 0 % of largest Peak  
 Max Peaks: 100  
 Peak Location: TOP

If leading or trailing edge < 100 prefer < Baseline drop else tangent >  
 Peak separation: 5

Method : Z:\voasrv\HPCHEM1\MSVOA\_U\Method\SFAMULM112921WMA.M  
 Title : VOC Analysis

Signal : TIC: VU046075.D\data.ms

peak #	R.T. min	first scan	max scan	last scan	PK TY	peak height	corr. area	corr. % max.	% of total
1	1.600	73	81	93	rBV	116320	127128	15.78%	1.966%
2	1.919	170	180	191	rVB	79421	101994	12.66%	1.577%
3	2.507	361	363	368	rBV	248	177	0.02%	0.003%
4	2.571	371	383	416	rVV	184888	303500	37.67%	4.693%
5	2.684	416	418	422	rVB2	218	153	0.02%	0.002%
6	2.800	450	454	458	rBV2	210	205	0.03%	0.003%
7	3.051	524	532	543	rVB2	2450	3939	0.49%	0.061%
8	3.186	565	574	587	rVB2	1725	3590	0.45%	0.056%
9	3.272	597	601	603	rBV	174	179	0.02%	0.003%
10	3.610	703	706	708	rBV	158	124	0.02%	0.002%
11	3.668	720	724	730	rBB	199	261	0.03%	0.004%
12	3.986	819	823	826	rBV	187	195	0.02%	0.003%
13	4.073	847	850	853	rBV	146	142	0.02%	0.002%
14	4.256	905	907	911	rVB	180	150	0.02%	0.002%
15	4.337	928	932	936	rBV	185	226	0.03%	0.003%
16	4.378	942	945	950	rBV	183	229	0.03%	0.004%
17	4.478	972	976	980	rVB2	165	111	0.01%	0.002%
18	4.555	997	1000	1003	rBV	127	136	0.02%	0.002%
19	4.636	1009	1025	1054	rBV	66090	188348	23.38%	2.912%
20	4.935	1116	1118	1122	rVB2	287	200	0.02%	0.003%
21	4.973	1127	1130	1133	rVV	225	168	0.02%	0.003%
22	5.067	1141	1159	1183	rVV	137820	309014	38.35%	4.778%
23	5.182	1189	1195	1197	rBV2	269	280	0.03%	0.004%
24	5.288	1225	1228	1232	rVB3	345	288	0.04%	0.004%
25	5.427	1268	1271	1277	rBV	168	221	0.03%	0.003%
26	5.504	1290	1295	1297	rBV	158	182	0.02%	0.003%
27	5.613	1326	1329	1333	rBB	249	208	0.03%	0.003%
28	5.642	1334	1338	1342	rBV	252	219	0.03%	0.003%
29	5.729	1342	1365	1384	rBV2	299174	805694	100.00%	12.458%
30	5.931	1426	1428	1432	rVB	292	145	0.02%	0.002%
31	5.957	1432	1436	1437	rBV	182	155	0.02%	0.002%
32	6.044	1459	1463	1467	rVV2	356	327	0.04%	0.005%
33	6.066	1467	1470	1475	rVB	202	208	0.03%	0.003%
34	6.118	1484	1486	1491	rVB	246	146	0.02%	0.002%
35	6.179	1499	1505	1507	rBV	254	194	0.02%	0.003%
36	6.250	1511	1527	1547	rBV	284813	534957	66.40%	8.271%

Data Path : Z:\voasrv\HPCHEM1\MSVOA\_U\Data\VU120321\  
 Data File : VU046075.D  
 Acq On : 03 Dec 2021 15:47  
 Operator : SY/MD  
 Sample : M4878-03  
 Misc : 5.0mL/MSVOA\_U/WATER  
 ALS Vial : 10 Sample Multiplier: 1

Instrument :  
 MSVOA\_U  
 ClientSampleId :  
 VHBLK001

Integration Parameters: LSCINT.P  
 Integrator: RTE  
 Smoothing : OFF  
 Sampling : 1  
 Start Thrs: 0.2  
 Stop Thrs : 0  
 Filtering: 5  
 Min Area: 0 % of largest Peak  
 Max Peaks: 100  
 Peak Location: TOP

If leading or trailing edge < 100 prefer < Baseline drop else tangent >  
 Peak separation: 5

Method : Z:\voasrv\HPCHEM1\MSVOA\_U\Method\SFAMULM112921WMA.M  
 Title : VOC Analysis

37	6.394	1569	1572	1574	rBV	161	122	0.02%	0.002%
38	6.436	1581	1585	1590	rBV2	166	210	0.03%	0.003%
39	6.533	1606	1615	1627	rBV5	3032	6319	0.78%	0.098%
40	6.693	1650	1665	1685	rBV	184475	351766	43.66%	5.439%
41	6.838	1708	1710	1713	rBV	270	200	0.02%	0.003%
42	6.970	1749	1751	1755	rBV	137	145	0.02%	0.002%
43	7.137	1800	1803	1806	rBV	143	152	0.02%	0.002%
44	7.237	1832	1834	1840	rVV	227	177	0.02%	0.003%
45	7.279	1844	1847	1849	rBV	179	149	0.02%	0.002%
46	7.356	1865	1871	1873	rBV	139	169	0.02%	0.003%
47	7.568	1924	1937	1961	rBV	104240	182011	22.59%	2.814%
48	7.648	1961	1962	1968	rVV2	338	202	0.03%	0.003%
49	7.722	1981	1985	1988	rBV	161	186	0.02%	0.003%
50	7.899	2026	2040	2057	rBV	383440	672395	83.46%	10.396%
51	8.179	2115	2127	2144	rBV	70853	116302	14.44%	1.798%
52	8.250	2148	2149	2153	rVB2	276	122	0.02%	0.002%
53	8.632	2255	2268	2298	rBV	213577	382440	47.47%	5.913%
54	8.816	2323	2325	2329	rBV	215	150	0.02%	0.002%
55	8.918	2350	2357	2365	rBV3	869	1373	0.17%	0.021%
56	9.163	2430	2433	2436	rVB2	257	147	0.02%	0.002%
57	9.417	2499	2512	2543	rBV	400858	670365	83.20%	10.365%
58	9.578	2558	2562	2567	rVB2	301	294	0.04%	0.005%
59	9.690	2591	2597	2604	rBV2	671	862	0.11%	0.013%
60	9.857	2645	2649	2653	rBV	112	114	0.01%	0.002%
61	10.111	2725	2728	2734	rBV2	207	184	0.02%	0.003%
62	10.404	2815	2819	2821	rVV	154	129	0.02%	0.002%
63	10.671	2894	2902	2910	rBV3	2508	3249	0.40%	0.050%
64	10.758	2916	2929	2948	rVB	243380	391707	48.62%	6.057%
65	10.867	2958	2963	2967	rBV2	407	449	0.06%	0.007%
66	11.108	3035	3038	3041	rBV2	400	282	0.04%	0.004%
67	11.205	3066	3068	3071	rBV	205	111	0.01%	0.002%
68	11.414	3130	3133	3138	rBV	126	111	0.01%	0.002%
69	11.459	3138	3147	3162	rVB5	1555	2755	0.34%	0.043%
70	11.581	3180	3185	3190	rVB	342	302	0.04%	0.005%
71	11.639	3199	3203	3207	rBV	113	111	0.01%	0.002%
72	11.693	3215	3220	3226	rVB2	755	980	0.12%	0.015%
73	11.812	3245	3257	3276	rBV	436089	682311	84.69%	10.550%
74	11.877	3276	3277	3279	rVB	382	140	0.02%	0.002%
75	11.915	3285	3289	3291	rVV2	175	158	0.02%	0.002%
76	11.928	3291	3293	3294	rVV2	360	182	0.02%	0.003%

Data Path : Z:\voasrv\HPCHEM1\MSVOA\_U\Data\VU120321\  
 Data File : VU046075.D  
 Acq On : 03 Dec 2021 15:47  
 Operator : SY/MD  
 Sample : M4878-03  
 Misc : 5.0mL/MSVOA\_U/WATER  
 ALS Vial : 10 Sample Multiplier: 1

Instrument :  
 MSVOA\_U  
 ClientSampleId :  
 VHBLK001

Integration Parameters: LSCINT.P

Integrator: RTE  
 Smoothing : OFF Filtering: 5  
 Sampling : 1 Min Area: 0 % of largest Peak  
 Start Thrs: 0.2 Max Peaks: 100  
 Stop Thrs : 0 Peak Location: TOP

If leading or trailing edge < 100 prefer < Baseline drop else tangent >  
 Peak separation: 5

Method : Z:\voasrv\HPCHEM1\MSVOA\_U\Method\SFAMULM112921WMA.M  
 Title : VOC Analysis

77	11.944	3294	3298	3301	rVV	710	758	0.09%	0.012%
78	11.973	3301	3307	3314	rVB3	1417	1912	0.24%	0.030%
79	12.066	3333	3336	3338	rBV2	208	127	0.02%	0.002%
80	12.114	3348	3351	3355	rVB2	337	243	0.03%	0.004%
81	12.195	3360	3376	3393	rVB	374641	603740	74.93%	9.335%
82	12.333	3412	3419	3424	rVB4	892	1140	0.14%	0.018%
83	12.385	3432	3435	3439	rBV	138	122	0.02%	0.002%
84	12.635	3506	3513	3515	rBV2	239	300	0.04%	0.005%
85	13.147	3669	3672	3675	rBV	198	128	0.02%	0.002%
86	13.417	3753	3756	3759	rBV	190	120	0.01%	0.002%
87	13.941	3915	3919	3921	rBV2	205	151	0.02%	0.002%
88	14.089	3956	3965	3976	rBV	1474	2287	0.28%	0.035%
89	14.185	3992	3995	4001	rVB	204	123	0.02%	0.002%
90	14.571	4111	4115	4118	rBV2	254	257	0.03%	0.004%
91	14.873	4206	4209	4212	rBV	210	141	0.02%	0.002%
92	14.941	4227	4230	4233	rVB	251	136	0.02%	0.002%
93	14.960	4234	4236	4241	rVB	248	188	0.02%	0.003%
94	14.992	4242	4246	4249	rBV	299	274	0.03%	0.004%
95	15.034	4256	4259	4262	rVB2	364	202	0.03%	0.003%
96	15.095	4276	4278	4282	rVB2	294	203	0.03%	0.003%
97	15.195	4306	4309	4314	rBV2	251	273	0.03%	0.004%
98	15.224	4314	4318	4326	rVB3	984	1318	0.16%	0.020%
99	16.497	4712	4714	4716	rBV2	448	257	0.03%	0.004%
100	16.674	4767	4769	4771	rBV	499	212	0.03%	0.003%

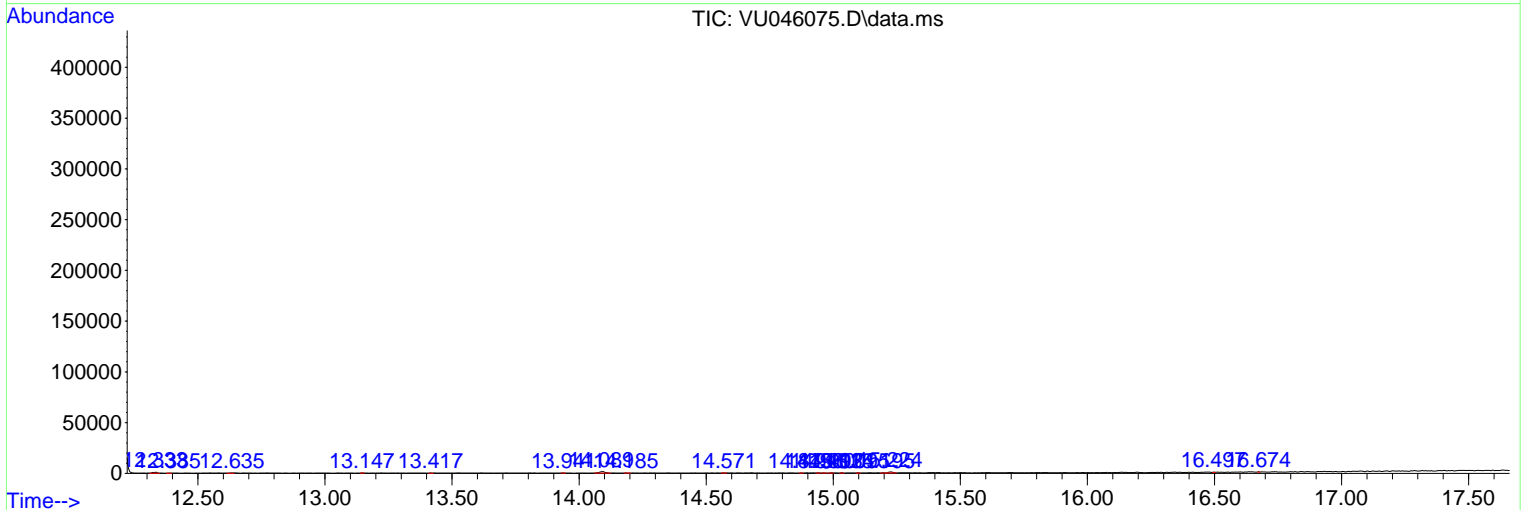
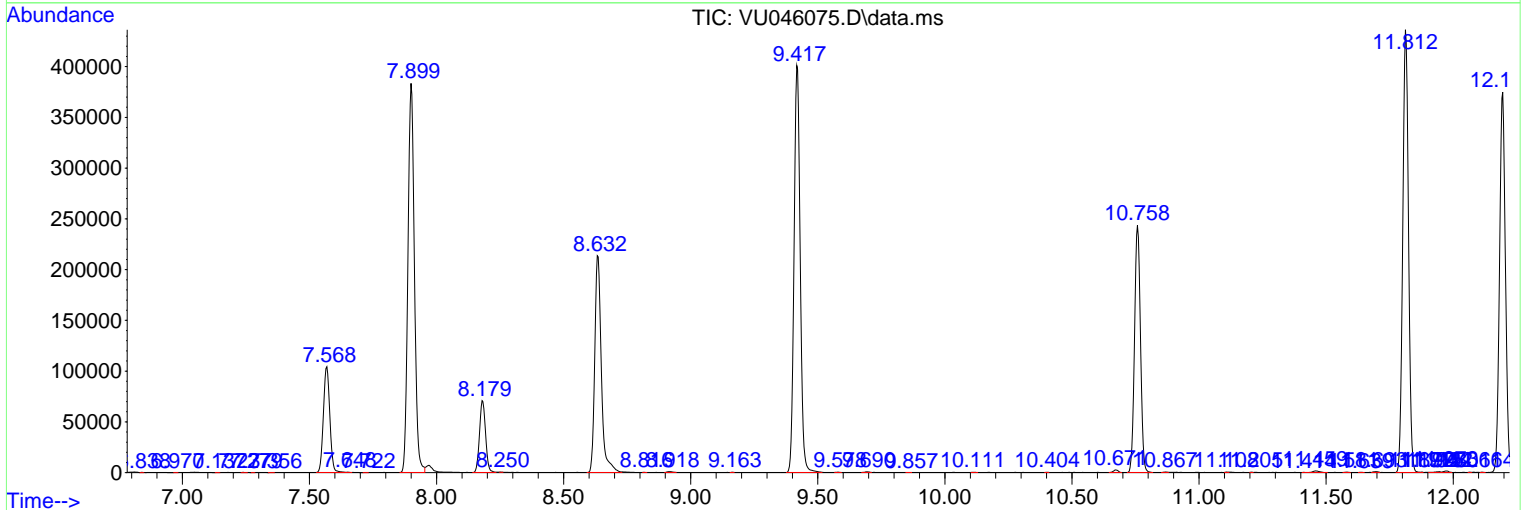
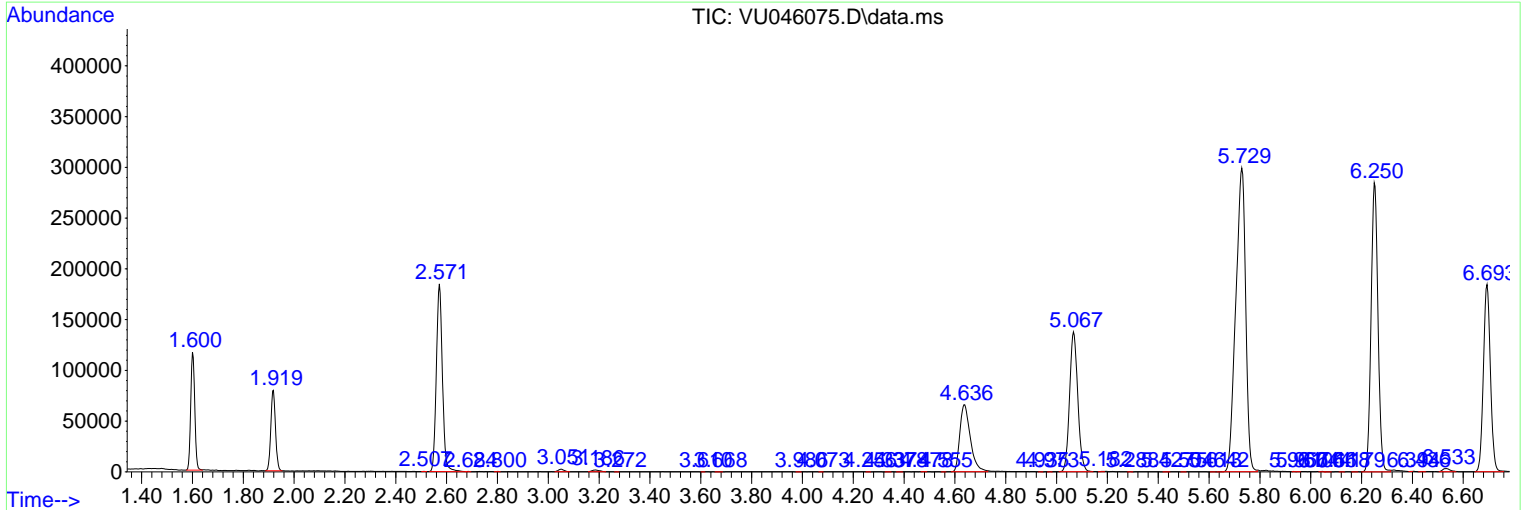
Sum of corrected areas: 6467538

Data Path : Z:\voasrv\HPCHEM1\MSVOA\_U\Data\VU120321\  
 Data File : VU046075.D  
 Acq On : 03 Dec 2021 15:47  
 Operator : SY/MD  
 Sample : M4878-03  
 Misc : 5.0mL/MSVOA\_U/WATER  
 ALS Vial : 10 Sample Multiplier: 1

**Instrument :**  
 MSVOA\_U  
**ClientSampleId :**  
 VHBLK001

Quant Method : Z:\voasrv\HPCHEM1\MSVOA\_U\Method\SFAMULM112921WMA.M  
 Quant Title : VOC Analysis

TIC Library : C:\Database\NIST20.L  
 TIC Integration Parameters: LSCINT.P



Library Search Compound Report

Data Path : Z:\voasrv\HPCHEM1\MSVOA\_U\Data\VU120321\  
Data File : VU046075.D  
Acq On : 03 Dec 2021 15:47  
Operator : SY/MD  
Sample : M4878-03  
Misc : 5.0mL/MSVOA\_U/WATER  
ALS Vial : 10 Sample Multiplier: 1

Instrument :  
MSVOA\_U  
ClientSampleId :  
VHBLK001

Quant Method : Z:\voasrv\HPCHEM1\MSVOA\_U\Method\SFAMULM112921WMA.M  
Quant Title : VOC Analysis

TIC Library : C:\Database\NIST20.L  
TIC Integration Parameters: LSCINT.P

No Library Search Compounds Detected

\*\*\*\*\*

Data Path : Z:\voasrv\HPCHEM1\MSVOA\_U\Data\VU120321\  
Data File : VU046075.D  
Acq On : 03 Dec 2021 15:47  
Operator : SY/MD  
Sample : M4878-03  
Misc : 5.0mL/MSVOA\_U/WATER  
ALS Vial : 10 Sample Multiplier: 1

Instrument :  
MSVOA\_U  
ClientSampleId :  
VHBLK001

Quant Method : Z:\voasrv\HPCHEM1\MSVOA\_U\Method\SFAMULM112921WMA.M  
Quant Title : VOC Analysis

TIC Library : C:\Database\NIST0.L  
TIC Integration Parameters: LSCINT.P

TIC Top Hit name	RT	EstConc	Units	Response	--Internal Standard--		
					#	RT	Resp Conc

---