

Data Path : Z:\VOASRV\HPCHEM1\MSVOA U\DATA\VU120418\
 Data File : VU028461.D
 Acq On : 04 Dec 2018 12:24
 Operator : MD/SY
 Sample : J6171-22
 Misc : 5.0mL/MSVOA U/WATER
 ALS Vial : 7 Sample Multiplier: 1

Instrument :
 MSVOA_U
 ClientSampleId :
 VHBLK02

Integration Parameters: LSCINT.P

Integrator: RTE
 Smoothing : OFF
 Sampling : 1
 Start Thrs: 0.2
 Stop Thrs : 0

Filtering: 5
 Min Area: 0 % of largest Peak
 Max Peaks: 100
 Peak Location: TOP

If leading or trailing edge < 100 prefer < Baseline drop else tangent >
 Peak separation: 5

Method : Z:\VOASRV\HPCHEM1\MSVOA_U\METHOD\SOMULM113018WMA.M
 Title : VOC Analysis

Signal : TIC

peak #	R.T. min	first scan	max scan	last scan	PK TY	peak height	corr. area	corr. % max.	% of total
1	1.398	63	70	81	rBV	278556	278683	13.94%	1.846%
2	1.681	150	158	173	rVB	224505	273971	13.70%	1.815%
3	2.273	332	342	356	rVB	425076	642009	32.11%	4.254%
4	2.598	439	443	446	rBV3	791	620	0.03%	0.004%
5	2.617	447	449	454	rVB5	661	527	0.03%	0.003%
6	2.701	468	475	483	rVV6	3716	5948	0.30%	0.039%
7	2.903	536	538	545	rVB3	865	776	0.04%	0.005%
8	2.939	545	549	551	rBV4	923	671	0.03%	0.004%
9	3.032	575	578	581	rBV2	816	604	0.03%	0.004%
10	3.087	589	595	599	rVB4	614	622	0.03%	0.004%
11	3.112	599	603	607	rBV3	659	529	0.03%	0.004%
12	3.453	702	709	710	rBV4	482	611	0.03%	0.004%
13	3.543	733	737	739	rBV2	549	469	0.02%	0.003%
14	3.598	748	754	756	rBV	570	562	0.03%	0.004%
15	3.630	761	764	768	rVV2	647	569	0.03%	0.004%
16	3.749	798	801	806	rBV3	606	497	0.02%	0.003%
17	3.826	821	825	828	rBV3	585	582	0.03%	0.004%
18	4.025	883	887	891	rVV3	695	664	0.03%	0.004%
19	4.177	920	934	966	rBV	206377	543038	27.16%	3.598%
20	4.373	992	995	1001	rVB4	841	598	0.03%	0.004%
21	4.649	1064	1081	1106	rBV	334417	768964	38.46%	5.095%
22	4.845	1138	1142	1145	rBV3	583	436	0.02%	0.003%
23	4.887	1147	1155	1158	rVV5	852	1105	0.06%	0.007%
24	5.022	1194	1197	1200	rVB3	740	478	0.02%	0.003%
25	5.054	1203	1207	1212	rVB3	467	452	0.02%	0.003%
26	5.340	1272	1296	1315	rBV2	685736	1999579	100.00%	13.248%
27	5.578	1366	1370	1373	rVB3	473	437	0.02%	0.003%
28	5.639	1382	1389	1392	rBV4	485	629	0.03%	0.004%
29	5.726	1413	1416	1420	rBV3	579	429	0.02%	0.003%
30	5.887	1448	1466	1492	rBV	574027	1138555	56.94%	7.543%
31	6.167	1551	1553	1557	rBV4	1042	696	0.03%	0.005%
32	6.189	1557	1560	1567	rVB8	1466	1279	0.06%	0.008%
33	6.263	1581	1583	1588	rVB3	656	433	0.02%	0.003%
34	6.331	1588	1604	1627	rBV	476574	952911	47.66%	6.313%

Data Path : Z:\VOASRV\HPCHEM1\MSVOA U\DATA\VU120418\
 Data File : VU028461.D
 Acq On : 04 Dec 2018 12:24
 Operator : MD/SY
 Sample : J6171-22
 Misc : 5.0mL/MSVOA U/WATER
 ALS Vial : 7 Sample Multiplier: 1

Instrument :
 MSVOA_U
 ClientSampleId :
 VHBLK02

Integration Parameters: LSCINT.P

Integrator: RTE
 Smoothing : OFF
 Sampling : 1
 Start Thrs: 0.2
 Stop Thrs : 0

Filtering: 5
 Min Area: 0 % of largest Peak
 Max Peaks: 100
 Peak Location: TOP

If leading or trailing edge < 100 prefer < Baseline drop else tangent >
 Peak separation: 5

Method : Z:\VOASRV\HPCHEM1\MSVOA_U\METHOD\SOMULM113018WMA.M
 Title : VOC Analysis

35	6.543	1666	1670	1672	rVB4	943	681	0.03%	0.005%
36	6.623	1690	1695	1698	rBV3	523	444	0.02%	0.003%
37	6.646	1698	1702	1706	rBV4	428	439	0.02%	0.003%
38	6.675	1707	1711	1716	rVB4	667	654	0.03%	0.004%
39	6.832	1756	1760	1761	rBV2	948	550	0.03%	0.004%
40	6.855	1761	1767	1775	rVV7	2397	3702	0.19%	0.025%
41	7.106	1841	1845	1849	rVB3	573	511	0.03%	0.003%
42	7.228	1869	1883	1902	rBV	268790	485366	24.27%	3.216%
43	7.295	1902	1904	1912	rVB5	1680	1964	0.10%	0.013%
44	7.379	1922	1930	1935	rBV6	1206	1875	0.09%	0.012%
45	7.430	1943	1946	1948	rVV4	705	444	0.02%	0.003%
46	7.450	1948	1952	1957	rVV4	883	875	0.04%	0.006%
47	7.565	1974	1988	2006	rBV	853872	1517006	75.87%	10.051%
48	7.848	2064	2076	2092	rBV	190188	323853	16.20%	2.146%
49	8.080	2145	2148	2154	rVB4	711	601	0.03%	0.004%
50	8.176	2175	2178	2180	rBV3	899	586	0.03%	0.004%
51	8.228	2190	2194	2197	rBV4	857	858	0.04%	0.006%
52	8.247	2197	2200	2205	rVB4	626	605	0.03%	0.004%
53	8.308	2207	2219	2246	rBV	690849	1189506	59.49%	7.881%
54	8.556	2293	2296	2301	rVB4	812	597	0.03%	0.004%
55	8.620	2313	2316	2320	rVB4	1014	858	0.04%	0.006%
56	8.639	2320	2322	2329	rBV6	789	727	0.04%	0.005%
57	8.819	2373	2378	2379	rVV4	559	461	0.02%	0.003%
58	8.855	2385	2389	2393	rVB3	621	478	0.02%	0.003%
59	8.999	2431	2434	2437	rVB2	612	460	0.02%	0.003%
60	9.089	2447	2462	2485	rBV	818625	1378018	68.92%	9.130%
61	9.363	2542	2547	2548	rBV3	680	433	0.02%	0.003%
62	9.379	2549	2552	2555	rVB3	760	533	0.03%	0.004%
63	9.482	2581	2584	2587	rBV3	740	571	0.03%	0.004%
64	9.758	2663	2670	2672	rBV4	927	748	0.04%	0.005%
65	10.012	2744	2749	2752	rBV3	781	853	0.04%	0.006%
66	10.109	2775	2779	2782	rVB2	639	537	0.03%	0.004%
67	10.131	2782	2786	2789	rBV3	788	640	0.03%	0.004%
68	10.170	2793	2798	2800	rBV2	539	472	0.02%	0.003%
69	10.225	2811	2815	2818	rBV2	533	451	0.02%	0.003%
70	10.315	2836	2843	2851	rVB6	2740	4042	0.20%	0.027%
71	10.430	2864	2879	2902	rBV	607716	964452	48.23%	6.390%

Data Path : Z:\VOASRV\HPCHEM1\MSVOA U\DATA\VU120418\
 Data File : VU028461.D
 Acq On : 04 Dec 2018 12:24
 Operator : MD/SY
 Sample : J6171-22
 Misc : 5.0mL/MSVOA U/WATER
 ALS Vial : 7 Sample Multiplier: 1

Instrument :
 MSVOA_U
 ClientSampleId :
 VHBLK02

Integration Parameters: LSCINT.P

Integrator: RTE
 Smoothing : OFF
 Sampling : 1
 Start Thrs: 0.2
 Stop Thrs : 0

Filtering: 5
 Min Area: 0 % of largest Peak
 Max Peaks: 100
 Peak Location: TOP

If leading or trailing edge < 100 prefer < Baseline drop else tangent >
 Peak separation: 5

Method : Z:\VOASRV\HPCHEM1\MSVOA_U\METHOD\SOMULM113018WMA.M
 Title : VOC Analysis

72	10.536	2909	2912	2916	rVB3	811	528	0.03%	0.003%
73	10.578	2922	2925	2927	rBV3	681	483	0.02%	0.003%
74	10.694	2952	2961	2966	rBV3	952	1560	0.08%	0.010%
75	10.897	3020	3024	3027	rBV	663	640	0.03%	0.004%
76	10.932	3032	3035	3040	rVV2	836	726	0.04%	0.005%
77	10.958	3040	3043	3048	rVB2	501	435	0.02%	0.003%
78	11.202	3117	3119	3124	rVB2	681	441	0.02%	0.003%
79	11.334	3157	3160	3164	rBV4	739	569	0.03%	0.004%
80	11.482	3193	3206	3225	rBV	812072	1275170	63.77%	8.449%
81	11.601	3240	3243	3245	rBV3	1281	795	0.04%	0.005%
82	11.620	3246	3249	3251	rVV	1012	704	0.04%	0.005%
83	11.655	3258	3260	3264	rBV5	588	471	0.02%	0.003%
84	11.787	3298	3301	3304	rBV3	926	713	0.04%	0.005%
85	11.858	3310	3323	3345	rBV	795952	1295595	64.79%	8.584%
86	12.189	3424	3426	3430	rVB3	1047	621	0.03%	0.004%
87	12.212	3430	3433	3440	rBV3	821	1123	0.06%	0.007%
88	12.276	3449	3453	3456	rBV3	562	558	0.03%	0.004%
89	12.359	3473	3479	3481	rBV3	679	741	0.04%	0.005%
90	12.530	3528	3532	3533	rBV2	773	483	0.02%	0.003%
91	12.607	3553	3556	3559	rBV3	658	519	0.03%	0.003%
92	12.806	3614	3618	3620	rBV2	631	501	0.03%	0.003%
93	12.835	3624	3627	3631	rVV2	941	713	0.04%	0.005%
94	12.855	3631	3633	3638	rVB2	740	546	0.03%	0.004%
95	12.938	3657	3659	3662	rBV3	561	458	0.02%	0.003%
96	13.080	3700	3703	3706	rBV2	778	565	0.03%	0.004%
97	13.176	3731	3733	3738	rVB2	979	712	0.04%	0.005%
98	13.511	3834	3837	3840	rBV	934	618	0.03%	0.004%
99	14.022	3993	3996	3999	rBV3	1141	816	0.04%	0.005%
100	14.736	4216	4218	4221	rBV3	1215	779	0.04%	0.005%

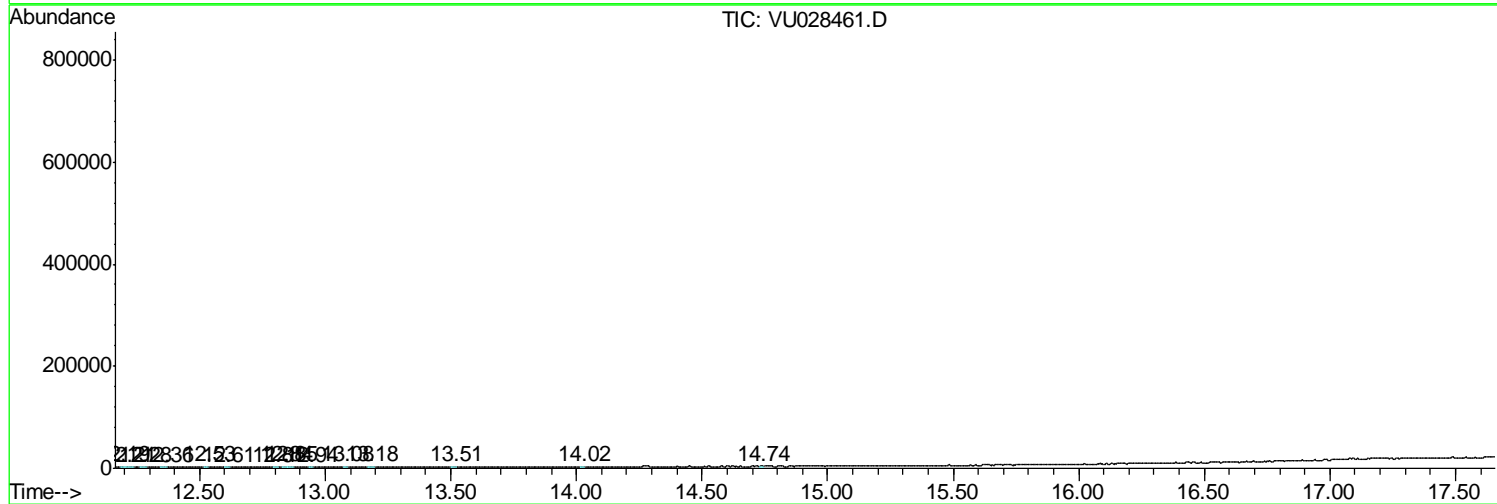
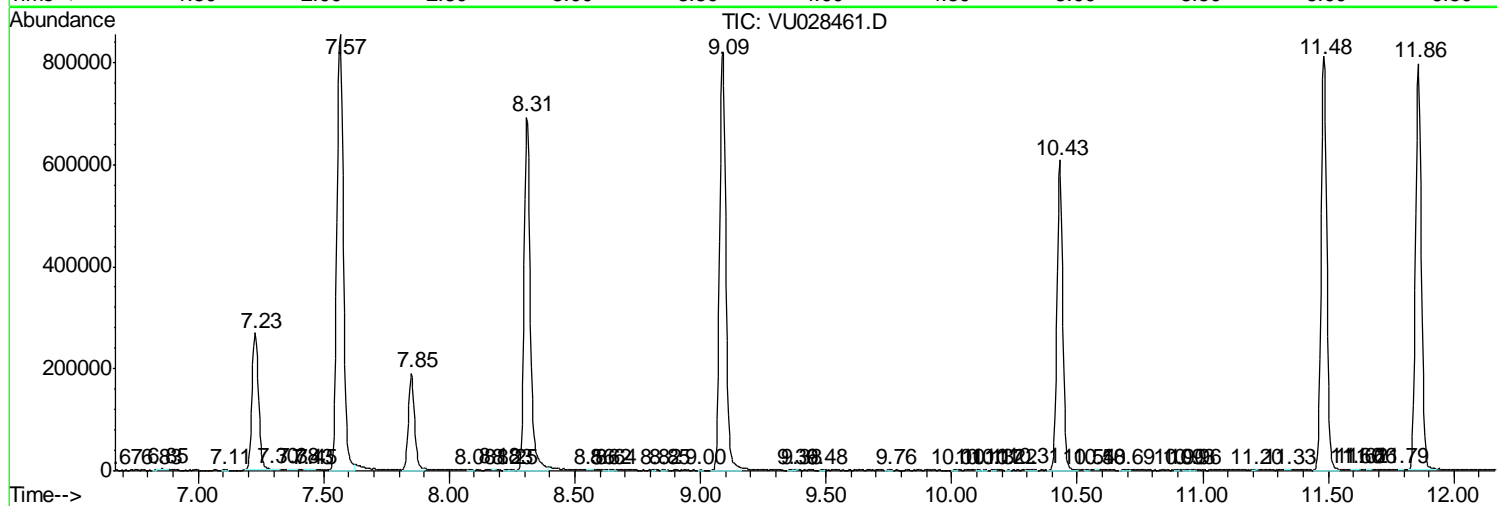
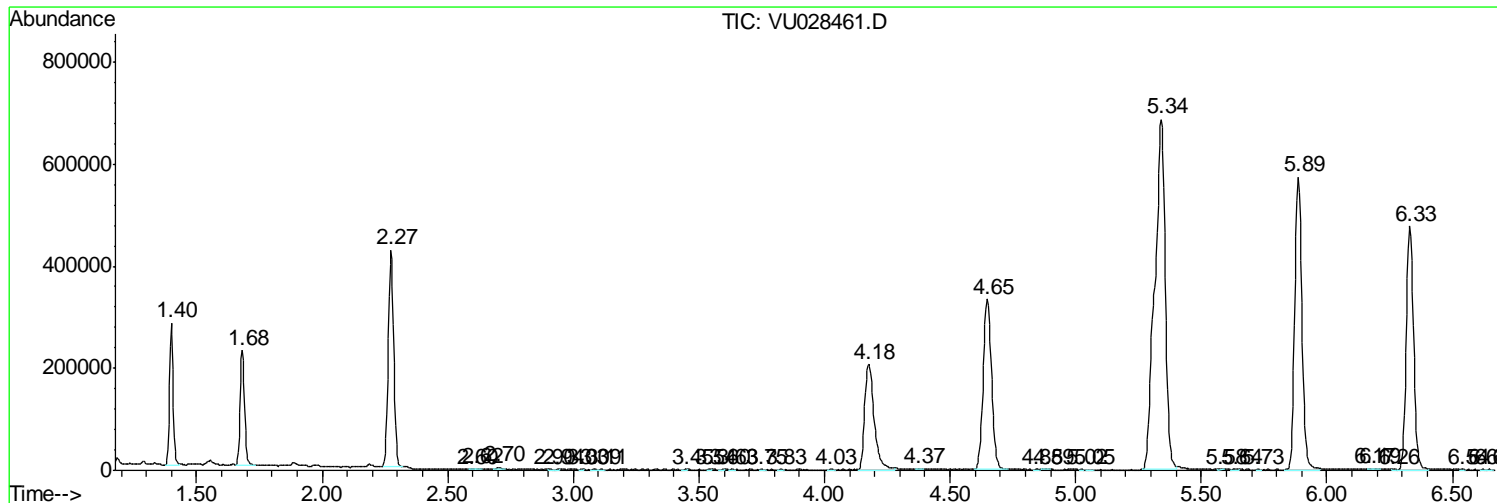
Sum of corrected areas: 15093367

Data Path : Z:\VOASRV\HPCHEM1\MSVOA U\DATA\VU120418\
 Data File : VU028461.D
 Acq On : 04 Dec 2018 12:24
 Operator : MD/SY
 Sample : J6171-22
 Misc : 5.0mL/MSVOA U/WATER
 ALS Vial : 7 Sample Multiplier: 1

Instrument :
 MSVOA_U
 ClientSampled :
 VHBLK02

Quant Method : Z:\VOASRV\HPCHEM1\MSVOA_U\METHOD\SOMULM113018WMA.M
 Quant Title : VOC Analysis

TIC Library : C:\DATABASE\NIST11.L
 TIC Integration Parameters: LSCINT.P



Data Path : Z:\VOASRV\HPCHEM1\MSVOA_U\DATA\VU120418\
Data File : VU028461.D
Acq On : 04 Dec 2018 12:24
Operator : MD/SY
Sample : J6171-22
Misc : 5.0mL/MSVOA_U/WATER
ALS Vial : 7 Sample Multiplier: 1

Instrument :
MSVOA_U
ClientSampleId :
VHBLK02

Quant Method : Z:\VOASRV\HPCHEM1\MSVOA_U\METHOD\SOMULM113018WMA.M
Quant Title : VOC Analysis

TIC Library : C:\DATABASE\NIST11.L
TIC Integration Parameters: LSCINT.P

No Library Search Compounds Detected

Data Path : Z:\VOASRV\HPCHEM1\MSVOA_U\DATA\VU120418\
Data File : VU028461.D
Acq On : 04 Dec 2018 12:24
Operator : MD/SY
Sample : J6171-22
Misc : 5.0mL/MSVOA_U/WATER
ALS Vial : 7 Sample Multiplier: 1

Instrument :
MSVOA_U
ClientSampleId :
VHBLK02

Quant Method : Z:\VOASRV\HPCHEM1\MSVOA_U\METHOD\SOMULM113018WMA.M
Quant Title : VOC Analysis

TIC Library : C:\DATABASE\NIST11.L
TIC Integration Parameters: LSCINT.P

TIC Top Hit name	RT	EstConc	Units	Response	--Internal Standard--			
					#	RT	Resp	Conc
