

Data Path : Z:\VOASRV\HPCHEM1\MSVOA U\DATA\VU120420\
 Data File : VU041477.D
 Acq On : 04 Dec 2020 17:49
 Operator : SY/MD
 Sample : VIBLK08
 Misc : 25.0mL/MSVOA U/WATER
 ALS Vial : 19 Sample Multiplier: 1

Instrument :
 MSVOA_U
 ClientSampleId :
 VIBLK08

Quant Time: Dec 05 05:27:17 2020
 Quant Method : Z:\VOASRV\HPCHEM1\MSVOA_U\METHOD\SOMUTR120420WMA.M
 Quant Title : TRACE VOA SOM01.0
 QLast Update : Sat Dec 05 05:22:35 2020
 Response via : Initial Calibration

Internal Standards	R.T.	QIon	Response	Conc	Units	Dev(Min)
1) 1,4-Difluorobenzene	6.26	114	51279	5.00	ug/L	0.00
28) Chlorobenzene-d5	9.42	117	51419	5.00	ug/L	0.00
60) 1,4-Dichlorobenzene-d4	11.81	152	25242	5.00	ug/L	0.00

System Monitoring Compounds

4) Vinyl Chloride-d3	1.61	65	12300	4.67	ug/L	0.00
Spiked Amount	5.000	Range	40 - 130	Recovery	=	93.40%
7) Chloroethane-d5	1.92	69	11428	4.94	ug/L	0.00
Spiked Amount	5.000	Range	65 - 130	Recovery	=	98.80%
11) 1,1-Dichloroethene-d2	2.58	63	21788	3.42	ug/L	0.00
Spiked Amount	5.000	Range	60 - 125	Recovery	=	68.40%
20) 2-Butanone-d5	4.66	46	50202	50.83	ug/L	0.00
Spiked Amount	50.000	Range	40 - 130	Recovery	=	101.66%
24) Chloroform-d	5.08	84	35669	4.90	ug/L	0.00
Spiked Amount	5.000	Range	70 - 125	Recovery	=	98.00%
26) 1,2-Dichloroethane-d4	5.72	65	25718	5.26	ug/L	0.00
Spiked Amount	5.000	Range	70 - 130	Recovery	=	105.20%
32) Benzene-d6	5.74	84	54520	4.76	ug/L	0.00
Spiked Amount	5.000	Range	70 - 125	Recovery	=	95.20%
36) 1,2-Dichloropropane-d6	6.70	67	15416	4.60	ug/L	0.00
Spiked Amount	5.000	Range	60 - 140	Recovery	=	92.00%
41) Toluene-d8	7.91	98	49233	4.39	ug/L	0.00
Spiked Amount	5.000	Range	70 - 130	Recovery	=	87.80%
43) trans-1,3-Dichloropropene-	8.19	79	9460	4.76	ug/L	0.00
Spiked Amount	5.000	Range	55 - 130	Recovery	=	95.20%
46) 2-Hexanone-d5	8.64	63	38847	47.04	ug/L	0.00
Spiked Amount	50.000	Range	45 - 130	Recovery	=	94.08%
57) 1,1,2,2-Tetrachloroethane-	10.75	84	16764	4.54	ug/L	0.00
Spiked Amount	5.000	Range	65 - 120	Recovery	=	90.80%
64) 1,2-Dichlorobenzene-d4	12.19	152	22725	5.26	ug/L	0.00
Spiked Amount	5.000	Range	80 - 120	Recovery	=	105.20%

Target Compounds

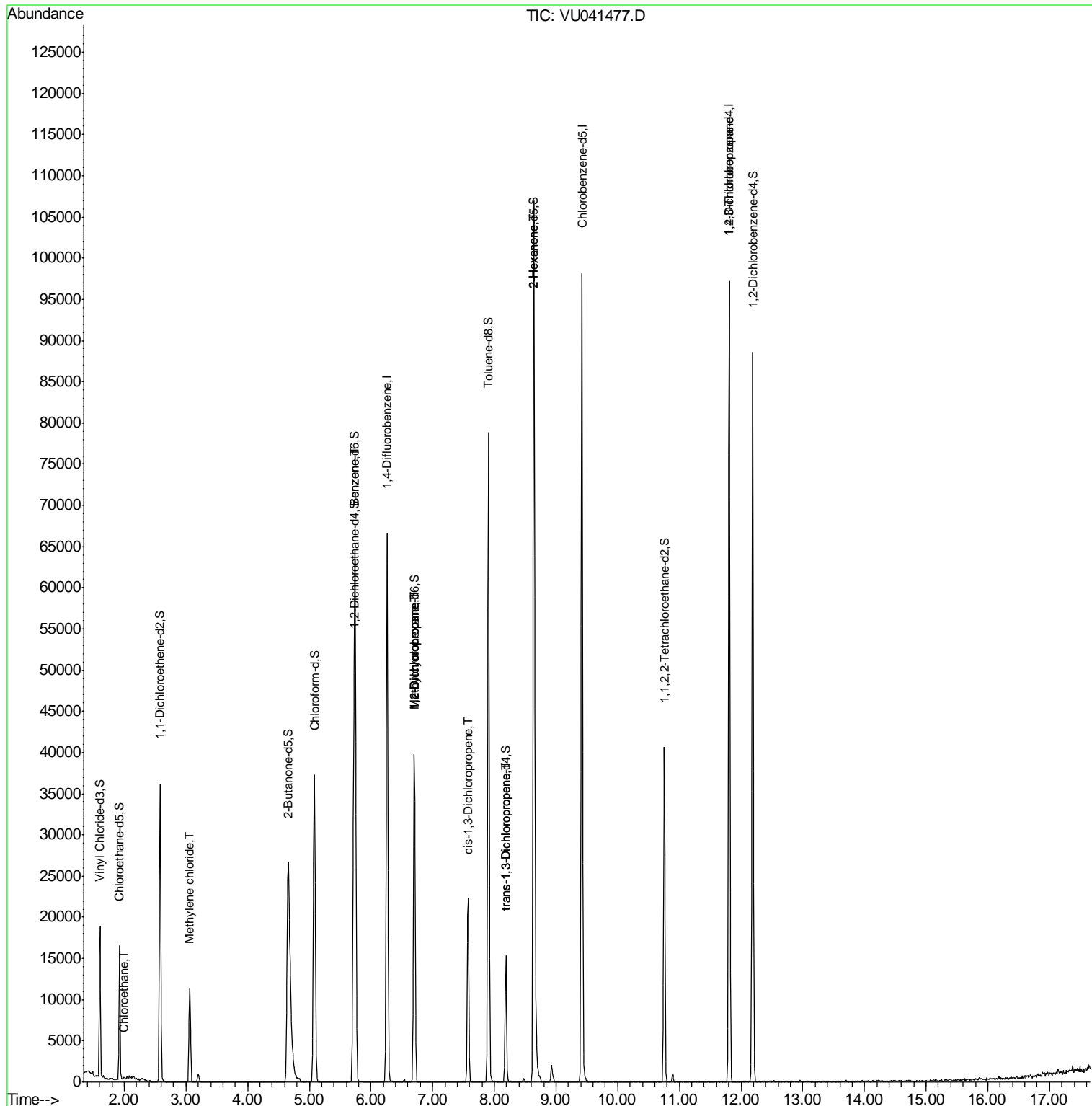
Target Compounds	R.T.	QIon	Response	Conc	Units	Ovalue
8) Chloroethane	1.99	64	109	0.048	ug/L #	45
16) Methylene chloride	3.06	84	5832	1.456	ug/L	84
33) Benzene	5.74	78	298	0.023	ug/L	100
35) Methylcyclohexane	6.70	83	4785	0.913	ug/L #	17
37) 1,2-Dichloropropane	6.70	63	2182	0.732	ug/L #	84
39) cis-1,3-Dichloropropene	7.57	75	492	0.091	ug/L	94
44) trans-1,3-Dichloropropene	8.18	75	344	0.064	ug/L #	38
48) 2-Hexanone	8.64	43	5809	3.025	ug/L #	67
59) 1,2,3-Trichloropropane	11.81	75	2454	0.848	ug/L #	79

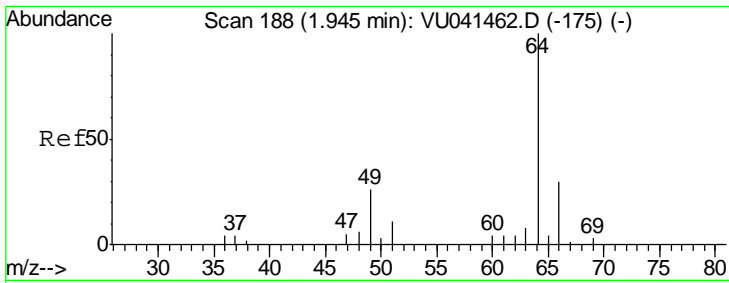
(#) = qualifier out of range (m) = manual integration (+) = signals summed

Data Path : Z:\VOASRV\HPCHEM1\MSVOA U\DATA\VU120420\
 Data File : VU041477.D
 Acq On : 04 Dec 2020 17:49
 Operator : SY/MD
 Sample : VIBLK08
 Misc : 25.0mL/MSVOA U/WATER
 ALS Vial : 19 Sample Multiplier: 1

Instrument :
 MSVOA_U
 Client Sampled :
 VIBLK08

Quant Time: Dec 05 05:27:17 2020
 Quant Method : Z:\VOASRV\HPCHEM1\MSVOA_U\METHOD\SOMUTR120420WMA.M
 Quant Title : TRACE VOA SOM01.0
 QLast Update : Sat Dec 05 05:22:35 2020
 Response via : Initial Calibration

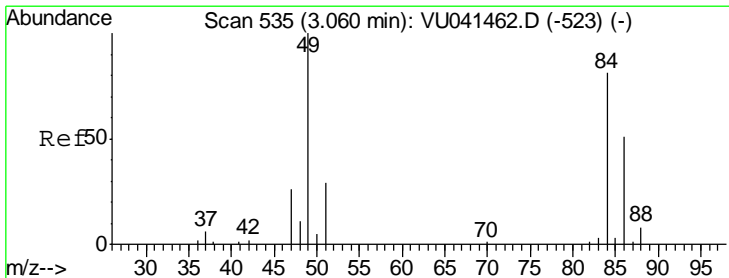
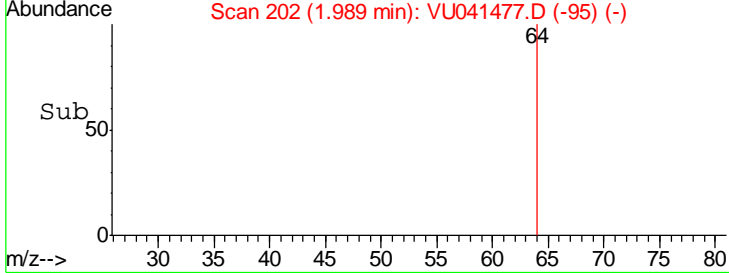
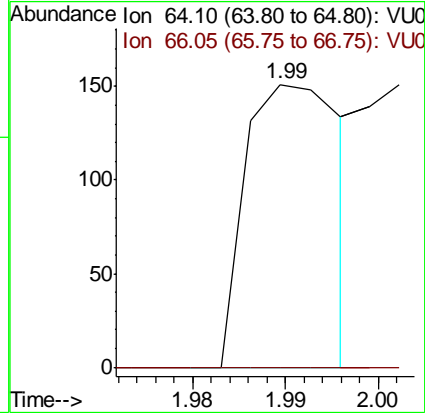
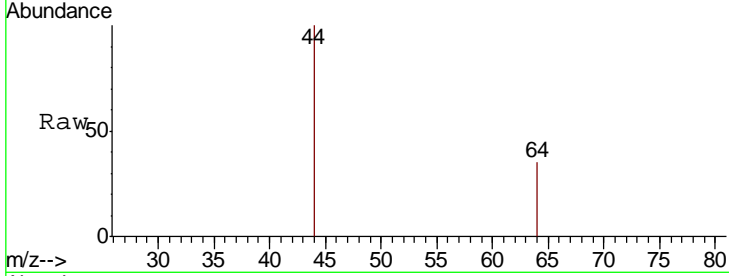




#8
 Chloroethane
 Concen: 0.048 ug/L
 RT: 1.99 min Scan# 202
 Delta R.T. 0.04 min
 Lab File: VU041477.D
 Acq: 04 Dec 2020 17:49

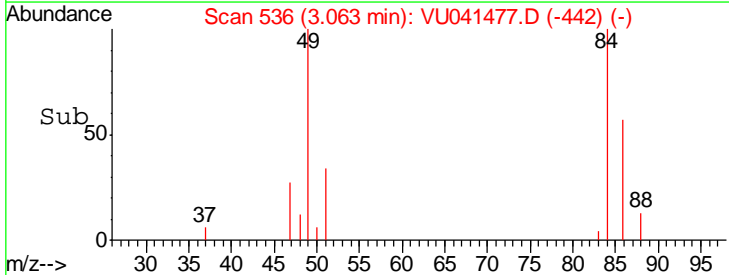
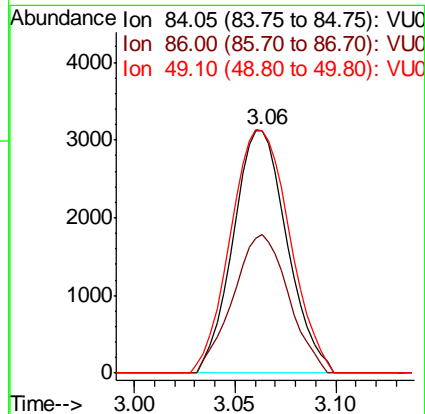
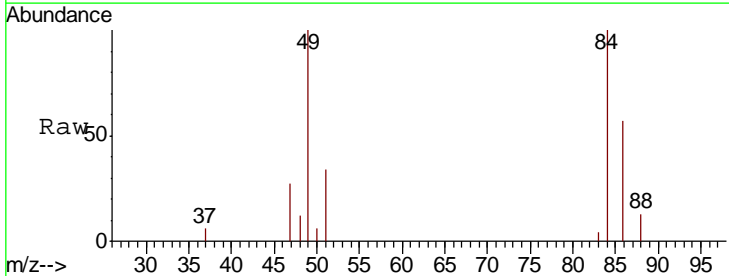
Instrument : MSVOA_U
 ClientSampled : VIBLK08

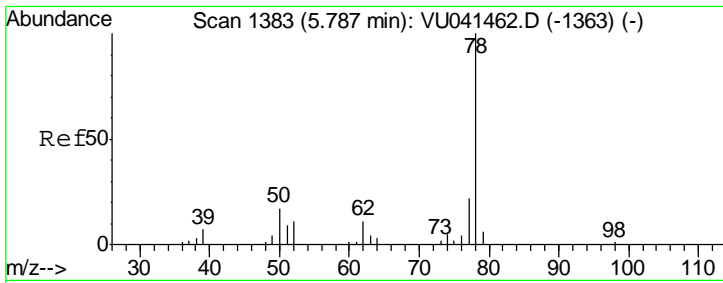
Tgt Ion	Resp	Lower	Upper
64	109		
66	0.0	20.9	38.9#



#16
 Methylene chloride
 Concen: 1.456 ug/L
 RT: 3.06 min Scan# 536
 Delta R.T. 0.00 min
 Lab File: VU041477.D
 Acq: 04 Dec 2020 17:49

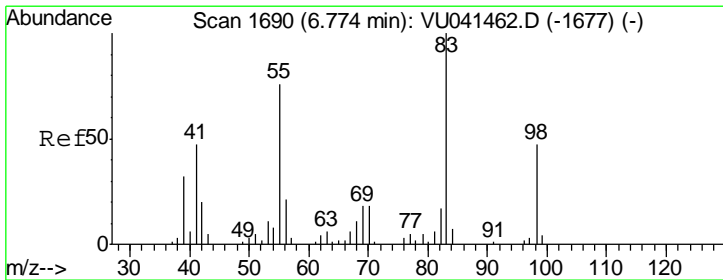
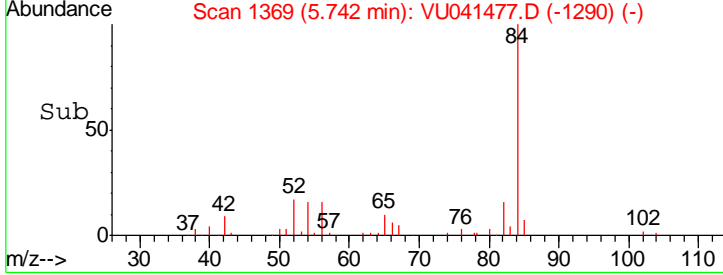
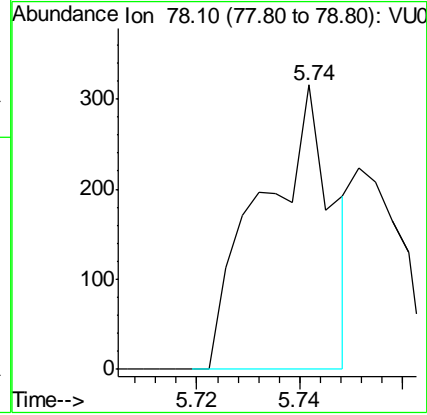
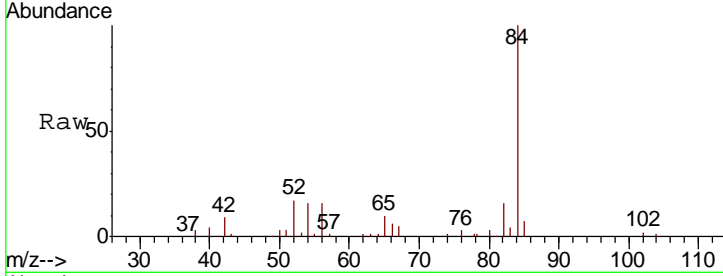
Tgt Ion	Resp	Lower	Upper
84	5832		
86	57.2	44.1	81.9
49	100.1	86.1	159.9





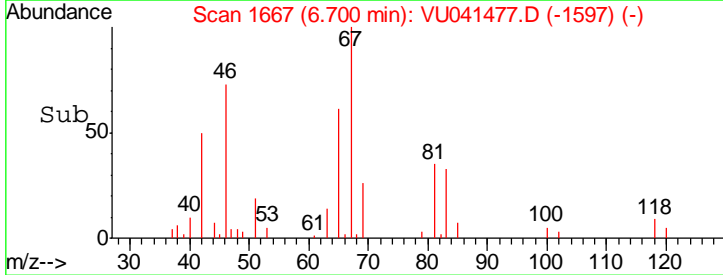
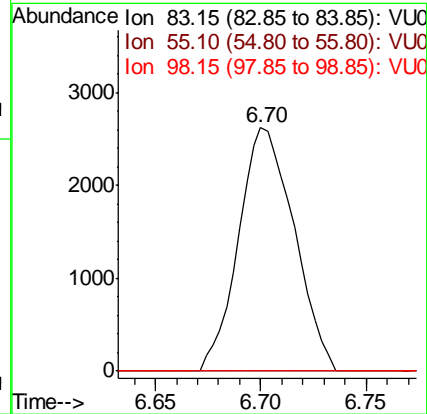
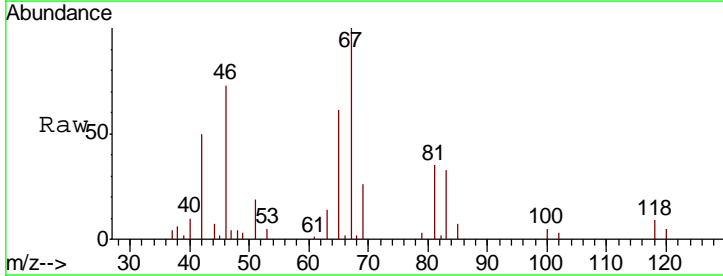
#33
Benzene
Concen: 0.023 ug/L
RT: 5.74 min Scan# 1369
Delta R.T. -0.05 min
Lab File: VU041477.D
Acq: 04 Dec 2020 17:49
Tgt Ion: 78 Resp: 298

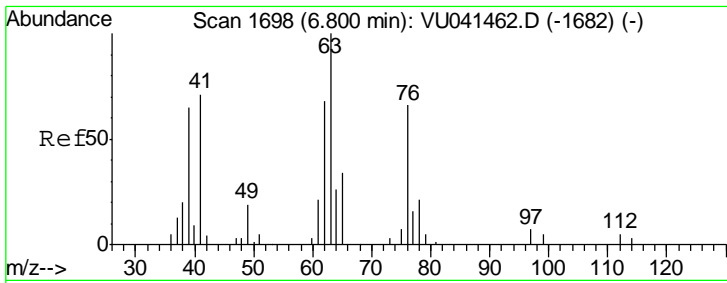
Instrument : MSVOA_U
ClientSampled : VIBLK08



#35
Methylcyclohexane
Concen: 0.913 ug/L
RT: 6.70 min Scan# 1667
Delta R.T. -0.07 min
Lab File: VU041477.D
Acq: 04 Dec 2020 17:49
Tgt Ion: 83 Resp: 4785

Ion	Ratio	Lower	Upper
83	100		
55	0.0	62.1	93.1#
98	0.0	38.7	58.1#

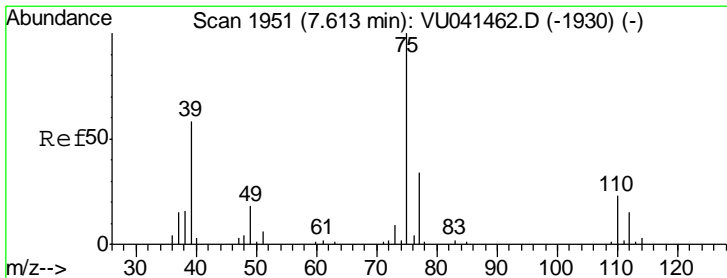
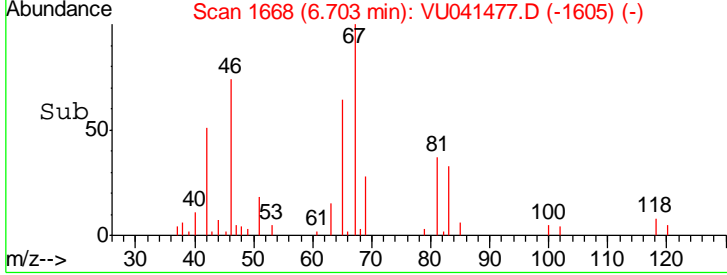
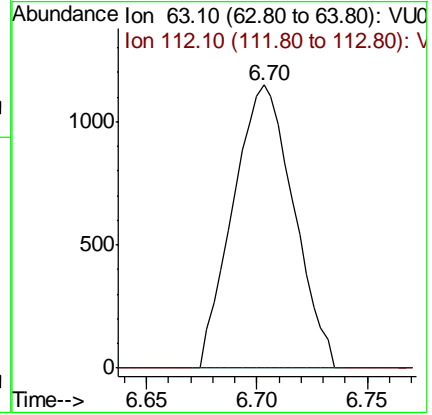
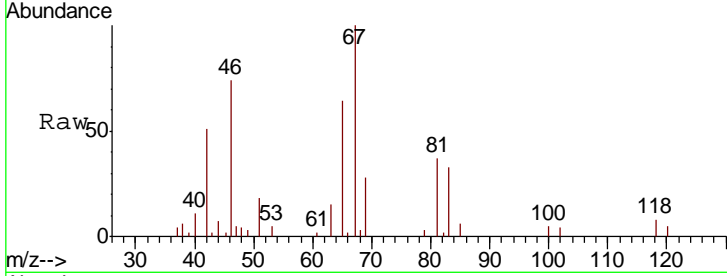




#37
 1,2-Dichloropropane
 Concen: 0.732 ug/L
 RT: 6.70 min Scan# 1668
 Delta R.T. -0.10 min
 Lab File: VU041477.D
 Acq: 04 Dec 2020 17:49

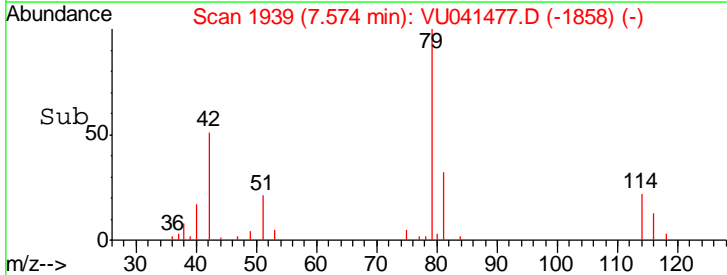
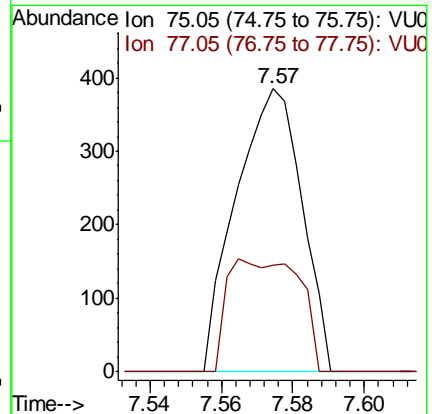
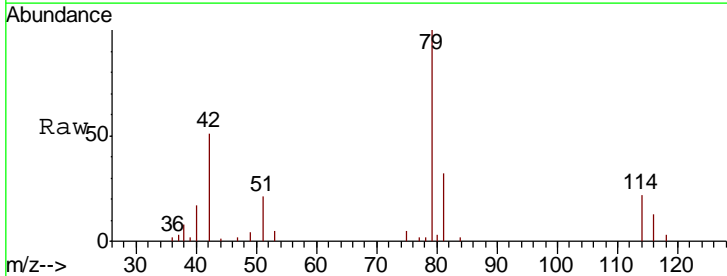
Instrument :
 MSVOA_U
 ClientSampleID :
 VIBLK08

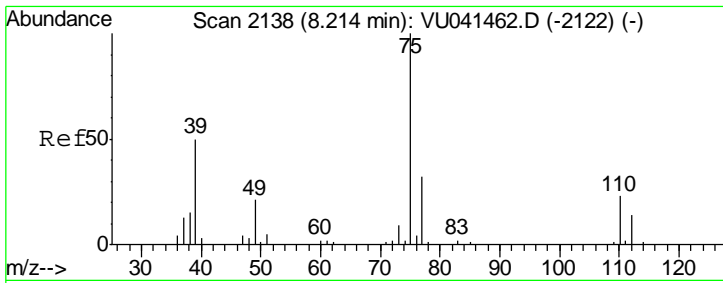
Tgt Ion: 63 Resp: 2182
 Ion Ratio Lower Upper
 63 100
 112 0.0 4.2 6.2#



#39
 cis-1,3-Dichloropropene
 Concen: 0.091 ug/L
 RT: 7.57 min Scan# 1939
 Delta R.T. -0.04 min
 Lab File: VU041477.D
 Acq: 04 Dec 2020 17:49

Tgt Ion: 75 Resp: 492
 Ion Ratio Lower Upper
 75 100
 77 37.7 24.0 44.6

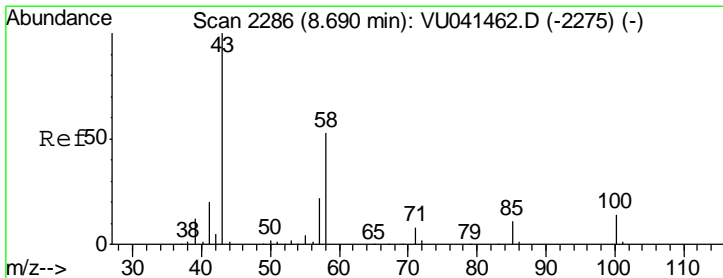
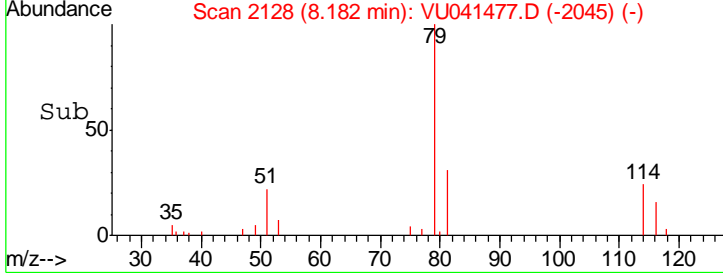
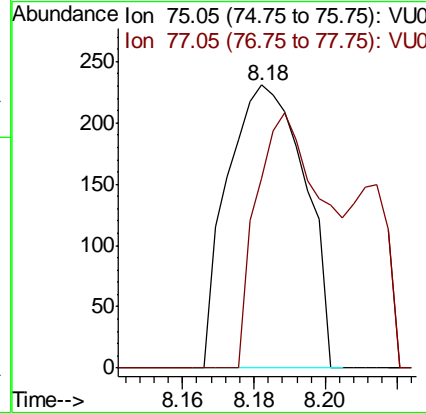
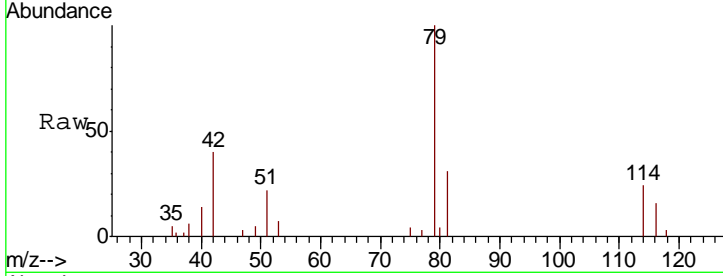




#44
 trans-1,3-Dichloropropene
 Concen: 0.064 ug/L
 RT: 8.18 min Scan# 2128
 Delta R.T. -0.03 min
 Lab File: VU041477.D
 Acq: 04 Dec 2020 17:49

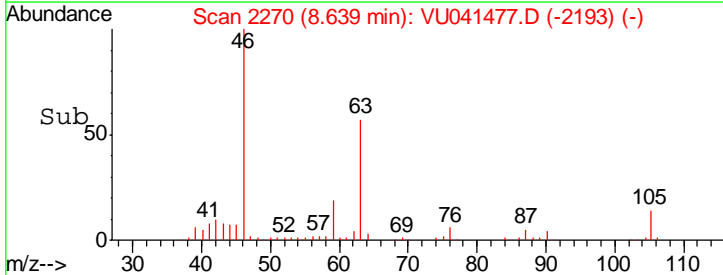
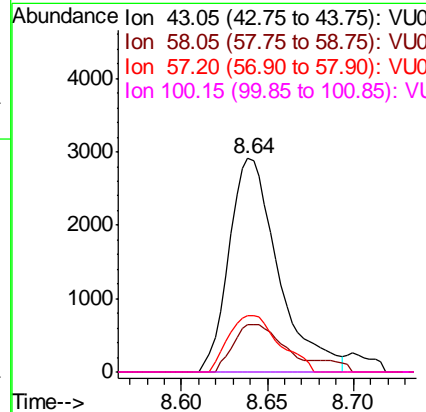
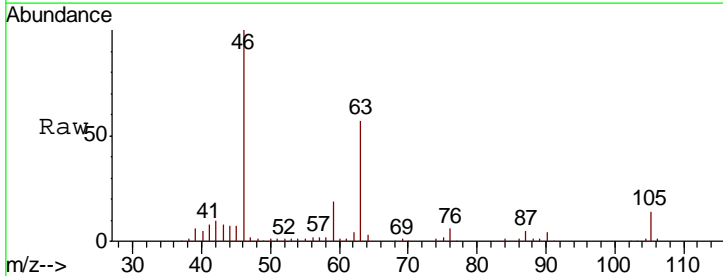
Instrument :
 MSVOA_U
 ClientSampled :
 VIBLK08

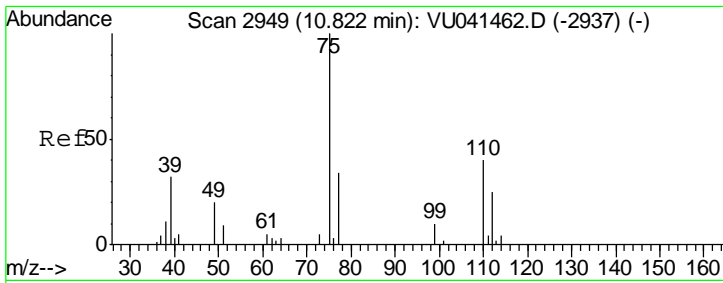
Tgt Ion	Resp	Lower	Upper
75	100		
77	67.1	22.7	42.3#



#48
 2-Hexanone
 Concen: 3.025 ug/L
 RT: 8.64 min Scan# 2270
 Delta R.T. -0.05 min
 Lab File: VU041477.D
 Acq: 04 Dec 2020 17:49

Tgt Ion	Resp	Lower	Upper
43	100		
58	22.8	41.4	62.0#
57	27.1	17.1	25.7#
100	0.0	10.6	16.0#

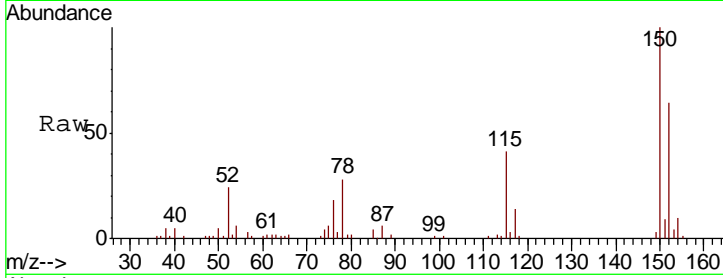




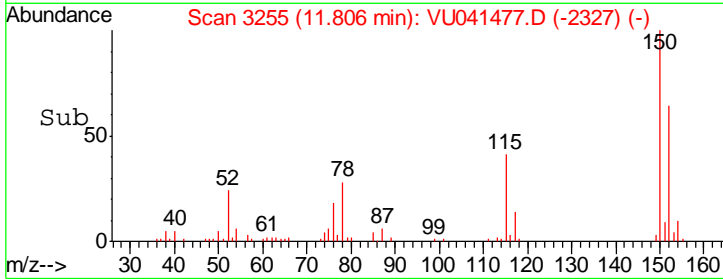
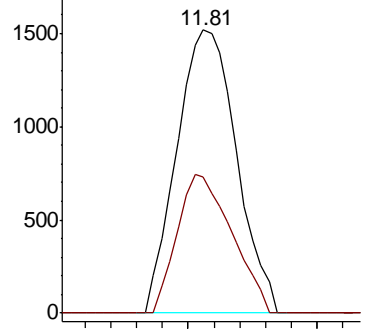
#59
 1,2,3-Trichloropropane
 Concen: 0.848 ug/L
 RT: 11.81 min Scan# 3255
 Delta R.T. 0.98 min
 Lab File: VU041477.D
 Acq: 04 Dec 2020 17:49

Instrument :
 MSVOA_U
 ClientSampled :
 VIBLK08

Tot Ion: 75 Resp: 2454
 Ion Ratio Lower Upper
 75 100
 77 44.7 26.3 39.5#



Abundance Ion 75.00 (74.70 to 75.70): VU0
 Ion 77.00 (76.70 to 77.70): VU0



Time-->