

Data Path : Z:\VOASRV\HPCHEM1\MSVOA U\DATA\VU120420\  
 Data File : VU041474.D  
 Acq On : 04 Dec 2020 16:38  
 Operator : SY/MD  
 Sample : VIBLK07  
 Misc : 25.0mL/MSVOA U/WATER  
 ALS Vial : 16 Sample Multiplier: 1

Instrument :  
 MSVOA\_U  
 ClientSampleID :  
 VIBLK07

Quant Time: Dec 05 06:51:25 2020  
 Quant Method : Z:\VOASRV\HPCHEM1\MSVOA\_U\METHOD\SOMUTR120420WMA.M  
 Quant Title : TRACE VOA SOM01.0  
 QLast Update : Sat Dec 05 05:22:35 2020  
 Response via : Initial Calibration

Internal Standards	R.T.	QIon	Response	Conc	Units	Dev(Min)
1) 1,4-Difluorobenzene	6.26	114	48688	5.00	ug/L	0.00
28) Chlorobenzene-d5	9.42	117	52683	5.00	ug/L	0.00
60) 1,4-Dichlorobenzene-d4	11.81	152	24487	5.00	ug/L	0.00

## System Monitoring Compounds

4) Vinyl Chloride-d3	1.60	65	12568	5.03	ug/L	0.00
Spiked Amount	5.000	Range	40 - 130	Recovery	=	100.60%
7) Chloroethane-d5	1.92	69	11646	5.31	ug/L	0.00
Spiked Amount	5.000	Range	65 - 130	Recovery	=	106.20%
11) 1,1-Dichloroethene-d2	2.58	63	23391	3.86	ug/L	0.00
Spiked Amount	5.000	Range	60 - 125	Recovery	=	77.20%
20) 2-Butanone-d5	4.66	46	55229	58.89	ug/L	0.00
Spiked Amount	50.000	Range	40 - 130	Recovery	=	117.78%
24) Chloroform-d	5.08	84	36143	5.23	ug/L	0.00
Spiked Amount	5.000	Range	70 - 125	Recovery	=	104.60%
26) 1,2-Dichloroethane-d4	5.72	65	26224	5.65	ug/L	0.00
Spiked Amount	5.000	Range	70 - 130	Recovery	=	113.00%
32) Benzene-d6	5.74	84	56049	4.77	ug/L	0.00
Spiked Amount	5.000	Range	70 - 125	Recovery	=	95.40%
36) 1,2-Dichloropropane-d6	6.70	67	16782	4.89	ug/L	0.00
Spiked Amount	5.000	Range	60 - 140	Recovery	=	97.80%
41) Toluene-d8	7.90	98	51890	4.51	ug/L	0.00
Spiked Amount	5.000	Range	70 - 130	Recovery	=	90.20%
43) trans-1,3-Dichloropropene-	8.19	79	10111	4.97	ug/L	0.00
Spiked Amount	5.000	Range	55 - 130	Recovery	=	99.40%
46) 2-Hexanone-d5	8.64	63	39120	46.23	ug/L	0.00
Spiked Amount	50.000	Range	45 - 130	Recovery	=	92.46%
57) 1,1,2,2-Tetrachloroethane-	10.75	84	17886	4.73	ug/L	0.00
Spiked Amount	5.000	Range	65 - 120	Recovery	=	94.60%
64) 1,2-Dichlorobenzene-d4	12.19	152	24011	5.73	ug/L	0.00
Spiked Amount	5.000	Range	80 - 120	Recovery	=	114.60%

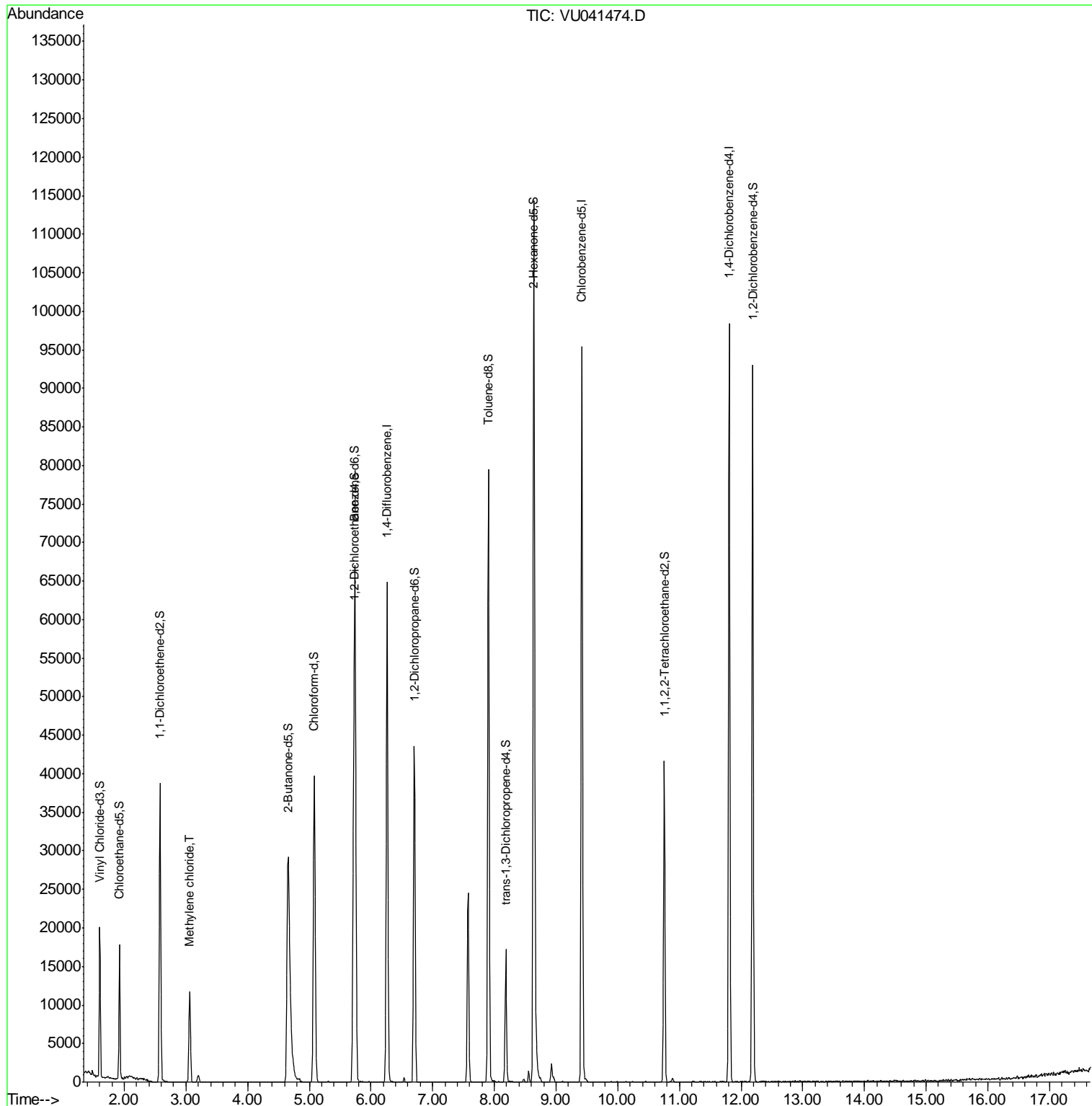
Target Compounds					Ovalue
16) Methylene chloride	3.06	84	6007	1.579 ug/L	88

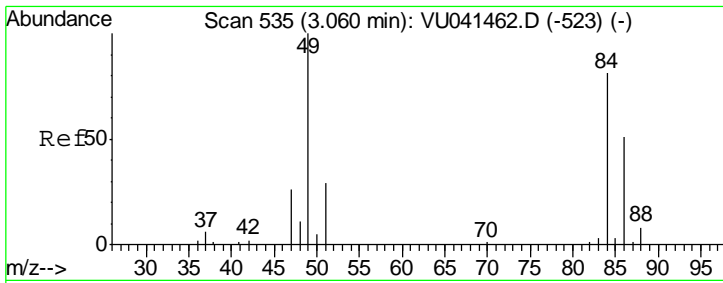
(#) = qualifier out of range (m) = manual integration (+) = signals summed

Data Path : Z:\VOASRV\HPCHEM1\MSVOA U\DATA\VU120420\  
 Data File : VU041474.D  
 Acq On : 04 Dec 2020 16:38  
 Operator : SY/MD  
 Sample : VIBLK07  
 Misc : 25.0mL/MSVOA U/WATER  
 ALS Vial : 16 Sample Multiplier: 1

Instrument :  
 MSVOA\_U  
 ClientSampleID :  
 VIBLK07

Quant Time: Dec 05 06:51:25 2020  
 Quant Method : Z:\VOASRV\HPCHEM1\MSVOA\_U\METHOD\SOMUTR120420WMA.M  
 Quant Title : TRACE VOA SOM01.0  
 QLast Update : Sat Dec 05 05:22:35 2020  
 Response via : Initial Calibration





#16  
 Methylene chloride  
 Concen: 1.579 ug/L  
 RT: 3.06 min Scan# 536  
 Delta R.T. 0.00 min  
 Lab File: VU041474.D  
 Acq: 04 Dec 2020 16:38

**Instrument :**  
 MSVOA\_U  
**ClientSampled :**  
 VIBLK07

Tot Ion	84	Resp	6007
Ion	Ratio	Lower	Upper
84	100		
86	62.4	44.1	81.9
49	103.5	86.1	159.9

