

Data File : VU036008.D  
 Acq On : 05 Dec 2019 21:08  
 Operator : JC/SP  
 Sample : K6132-16  
 Misc : 25.0mL/MSVOA\_U/WATER  
 ALS Vial : 24 Sample Multiplier: 1

Instrument :  
 MSVOA\_U  
 ClientSampled :  
 BFQR3

Quant Time: Dec 06 01:03:46 2019  
 Quant Method : Z:\VOASRV\HPCHEM1\MSVOA\_U\METHOD\SOMUTR120319WMA.M  
 Quant Title : TRACE VOA SOM01.0  
 QLast Update : Fri Dec 06 00:57:26 2019  
 Response via : Initial Calibration

Internal Standards	R.T.	QIon	Response	Conc	Units	Dev(Min)
1) 1,4-Difluorobenzene	6.29	114	275199	5.00	ug/L	0.00
28) Chlorobenzene-d5	9.45	117	296500	5.00	ug/L	0.00
60) 1,4-Dichlorobenzene-d4	11.84	152	113436	5.00	ug/L	0.00

System Monitoring Compounds

4) Vinyl Chloride-d3	1.61	65	113171	3.61	ug/L	0.00
Spiked Amount	5.000	Range	40 - 130	Recovery	=	72.20%
7) Chloroethane-d5	1.93	69	100771	4.01	ug/L	0.00
Spiked Amount	5.000	Range	65 - 130	Recovery	=	80.20%
11) 1,1-Dichloroethene-d2	2.59	63	138505	3.07	ug/L	0.00
Spiked Amount	5.000	Range	60 - 125	Recovery	=	61.40%
20) 2-Butanone-d5	4.71	46	243897	43.90	ug/L	0.00
Spiked Amount	50.000	Range	40 - 130	Recovery	=	87.80%
24) Chloroform-d	5.11	84	195399	4.54	ug/L	0.00
Spiked Amount	5.000	Range	70 - 125	Recovery	=	90.80%
26) 1,2-Dichloroethane-d4	5.75	65	103808	4.55	ug/L	0.00
Spiked Amount	5.000	Range	70 - 130	Recovery	=	91.00%
32) Benzene-d6	5.77	84	374728	4.27	ug/L	0.00
Spiked Amount	5.000	Range	70 - 125	Recovery	=	85.40%
36) 1,2-Dichloropropane-d6	6.73	67	120201	4.23	ug/L	0.00
Spiked Amount	5.000	Range	60 - 140	Recovery	=	84.60%
41) Toluene-d8	7.93	98	302472	3.74	ug/L	0.00
Spiked Amount	5.000	Range	70 - 130	Recovery	=	74.80%
43) trans-1,3-Dichloropropene-	8.21	79	44397	3.87	ug/L	0.00
Spiked Amount	5.000	Range	55 - 130	Recovery	=	77.40%
46) 2-Hexanone-d5	8.68	63	185577	41.09	ug/L	0.00
Spiked Amount	50.000	Range	45 - 130	Recovery	=	82.18%
57) 1,1,2,2-Tetrachloroethane-	10.78	84	105656	4.42	ug/L	0.00
Spiked Amount	5.000	Range	65 - 120	Recovery	=	88.40%
64) 1,2-Dichlorobenzene-d4	12.22	152	113851	4.86	ug/L	0.00
Spiked Amount	5.000	Range	80 - 120	Recovery	=	97.20%

Target Compounds

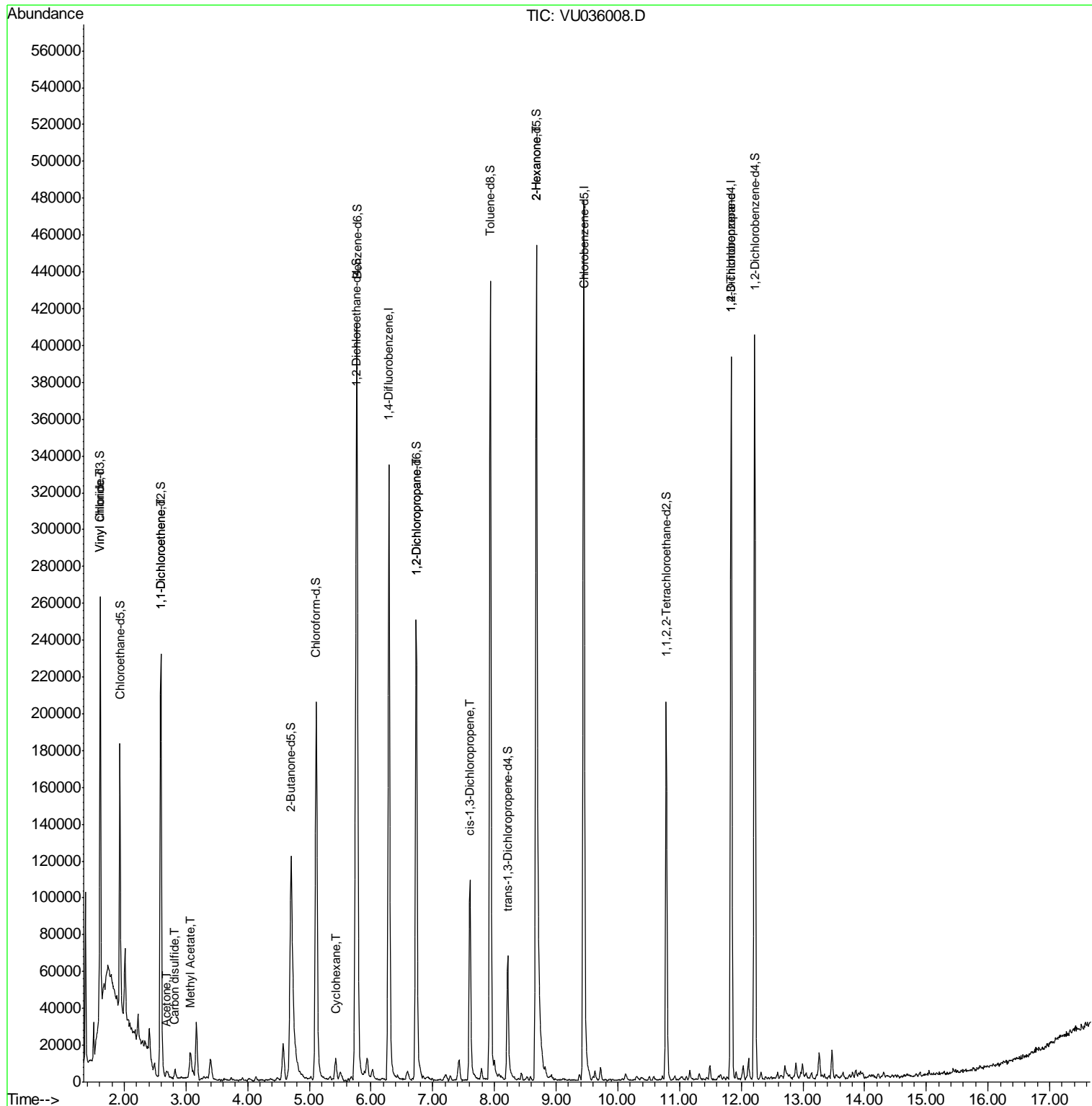
						Qvalue
5) Vinyl chloride	1.62	62	3485	0.106	ug/L #	1
12) 1,1-Dichloroethene	2.59	96	1224	0.062	ug/L #	1
13) Acetone	2.69	43	4693	0.934	ug/L	72
14) Carbon disulfide	2.82	76	6432	0.093	ug/L #	95
15) Methyl Acetate	3.07	43	9157	1.017	ug/L #	51
30) Cyclohexane	5.43	56	4576	0.129	ug/L	97
37) 1,2-Dichloropropane	6.73	63	12275	0.486	ug/L #	88
39) cis-1,3-Dichloropropene	7.60	75	2749	0.082	ug/L #	43
48) 2-Hexanone	8.68	43	21583	1.969	ug/L #	71
59) 1,2,3-Trichloropropane	11.84	75	12192	0.743	ug/L	91

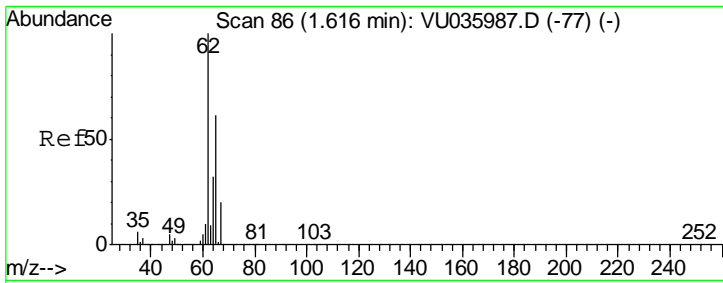
(#) = qualifier out of range (m) = manual integration (+) = signals summed

Data File : VU036008.D  
Acq On : 05 Dec 2019 21:08  
Operator : JC/SP  
Sample : K6132-16  
Misc : 25.0mL/MSVOA\_U/WATER  
ALS Vial : 24 Sample Multiplier: 1

Instrument :  
MSVOA\_U  
ClientSampleID :  
BFQR3

Quant Time: Dec 06 01:03:46 2019  
Quant Method : Z:\VOASRV\HPCHEM1\MSVOA\_U\METHOD\SOMUTR120319WMA.M  
Quant Title : TRACE VOA SOM01.0  
QLast Update : Fri Dec 06 00:57:26 2019  
Response via : Initial Calibration

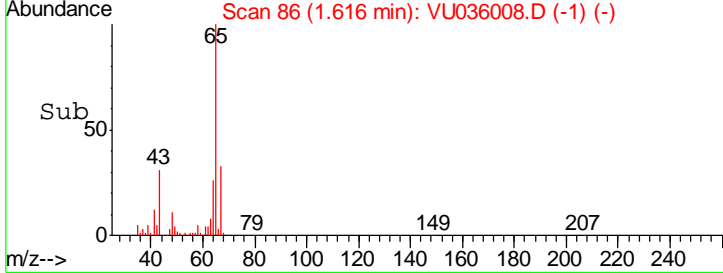
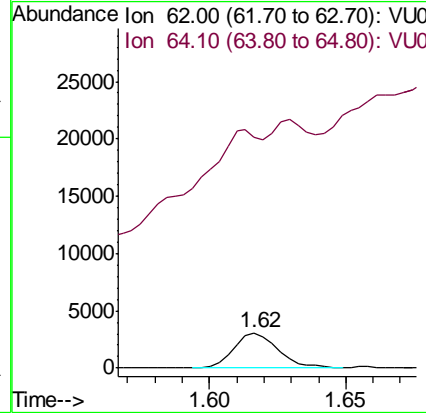
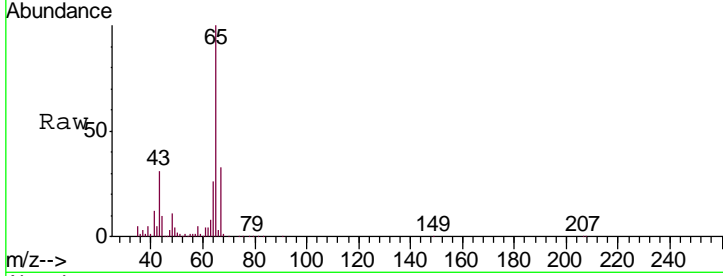




#5  
 Vinyl chloride  
 Concen: 0.106 ug/L  
 RT: 1.62 min Scan# 86  
 Delta R.T. -0.00 min  
 Lab File: VU036008.D  
 Acq: 05 Dec 2019 21:08

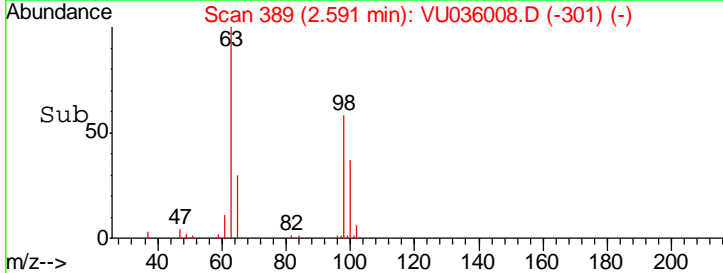
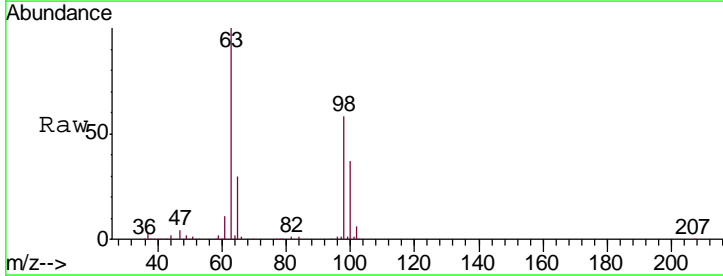
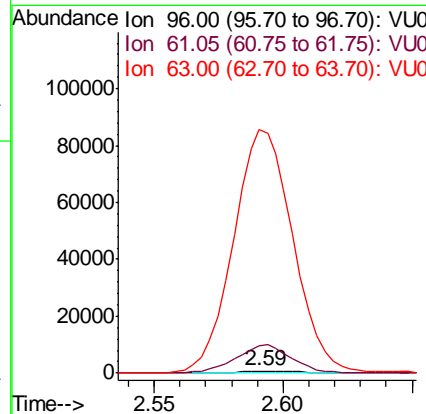
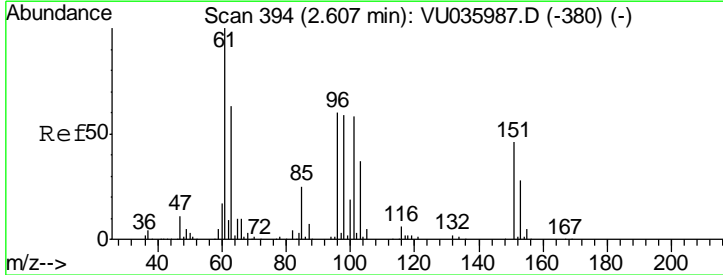
**Instrument :**  
 MSVOA\_U  
**ClientSampled :**  
 BFQR3

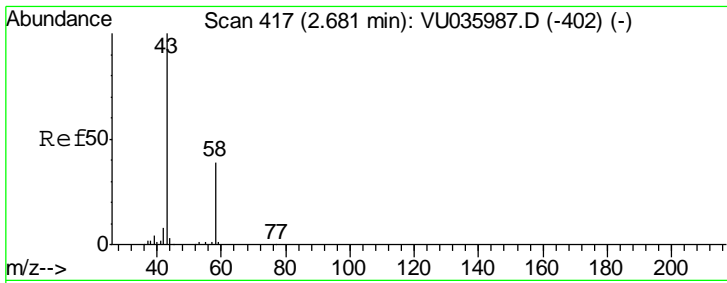
Tgt Ion: 62 Resp: 3485  
 Ion Ratio Lower Upper  
 62 100  
 64 657.9 23.0 42.6#



#12  
 1,1-Dichloroethene  
 Concen: 0.062 ug/L  
 RT: 2.59 min Scan# 389  
 Delta R.T. -0.02 min  
 Lab File: VU036008.D  
 Acq: 05 Dec 2019 21:08

Tgt Ion: 96 Resp: 1224  
 Ion Ratio Lower Upper  
 96 100  
 61 1315.4 127.1 236.1#  
 63 11792.8 86.0 159.8#

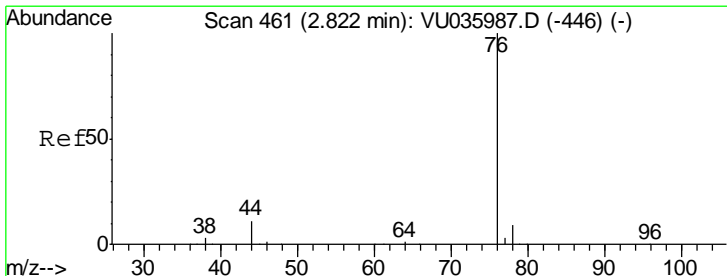
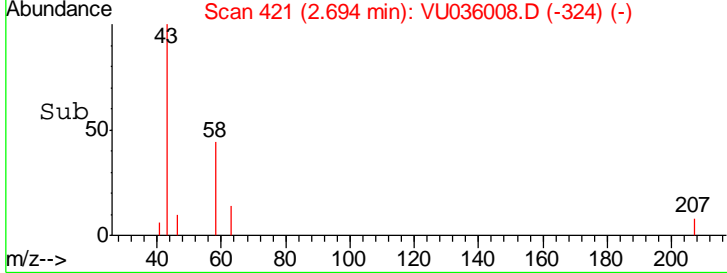
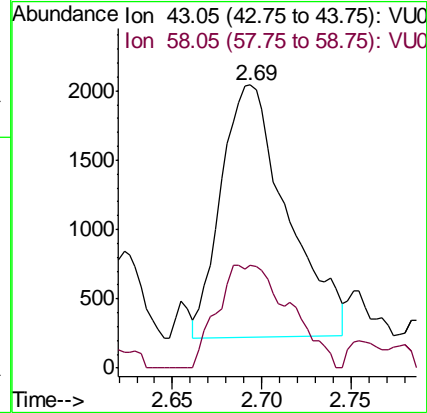
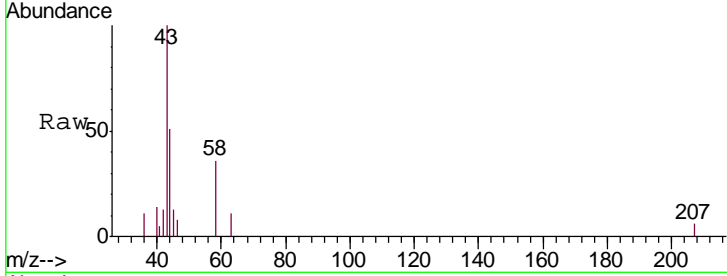




#13  
 Acetone  
 Concen: 0.934 ug/L  
 RT: 2.69 min Scan# 421  
 Delta R.T. 0.01 min  
 Lab File: VU036008.D  
 Acq: 05 Dec 2019 21:08

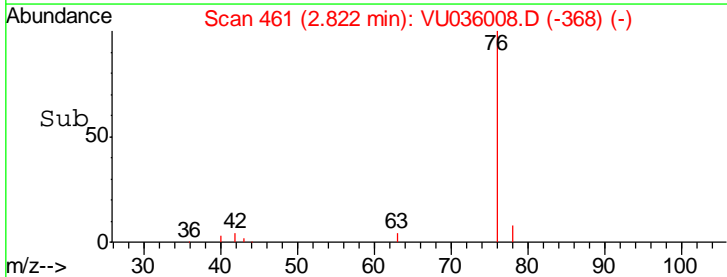
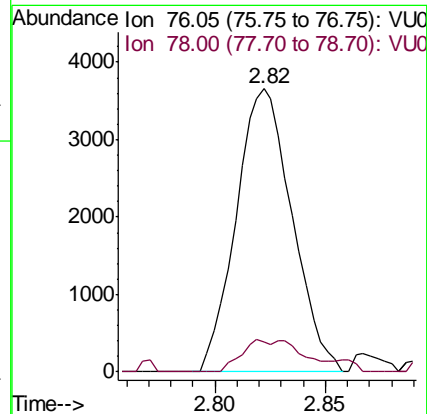
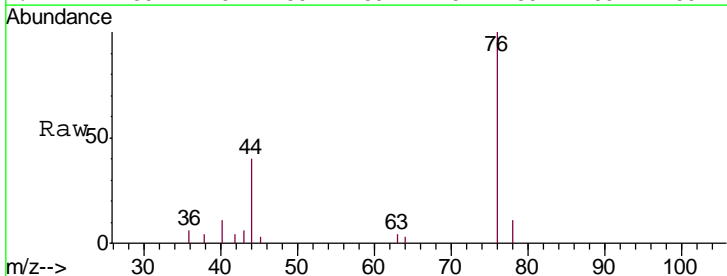
**Instrument :**  
 MSVOA\_U  
**ClientSampled :**  
 BFQR3

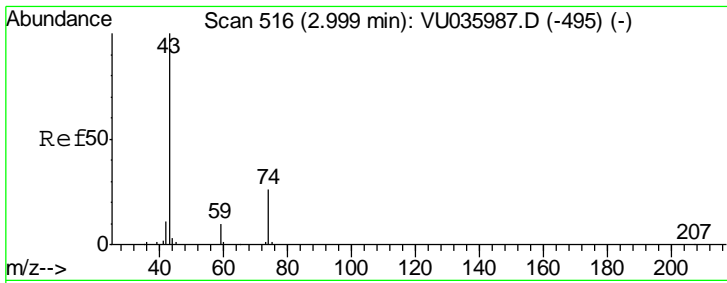
Tgt Ion	Resp	Lower	Upper
43	100		
58	18.1	0.0	68.6



#14  
 Carbon disulfide  
 Concen: 0.093 ug/L  
 RT: 2.82 min Scan# 461  
 Delta R.T. 0.00 min  
 Lab File: VU036008.D  
 Acq: 05 Dec 2019 21:08

Tgt Ion	Resp	Lower	Upper
76	100		
78	10.6	6.9	10.3#

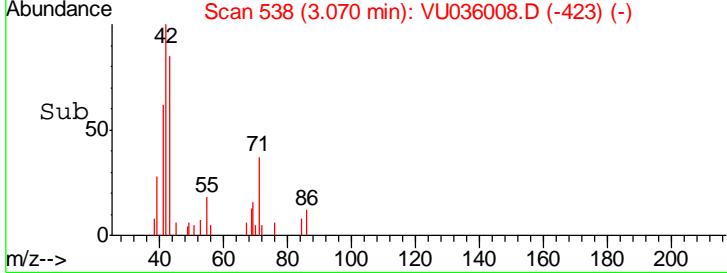
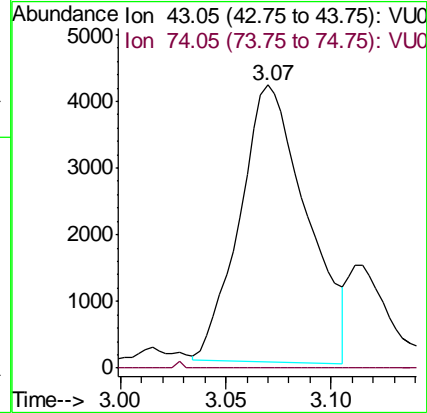
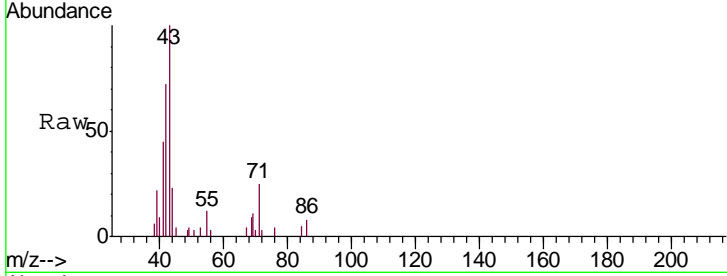




#15  
 Methyl Acetate  
 Concen: 1.017 ug/L  
 RT: 3.07 min Scan# 538  
 Delta R.T. 0.07 min  
 Lab File: VU036008.D  
 Acq: 05 Dec 2019 21:08

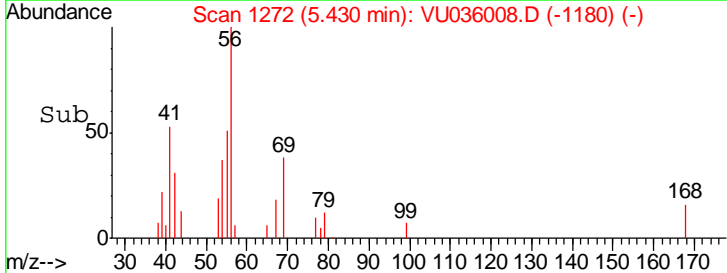
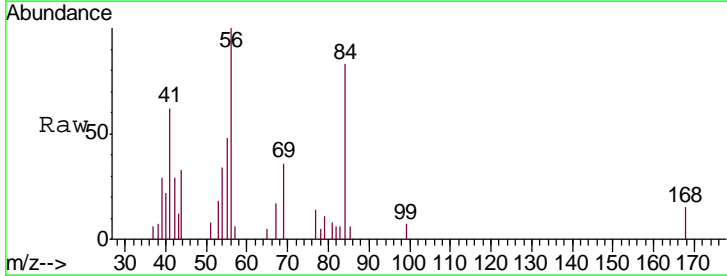
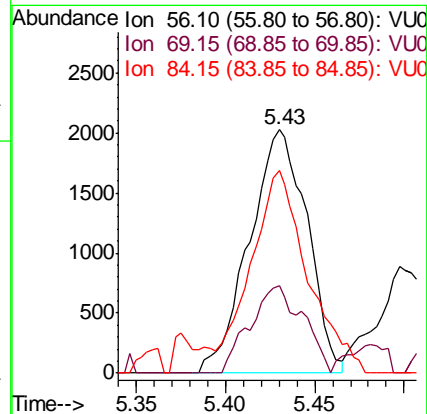
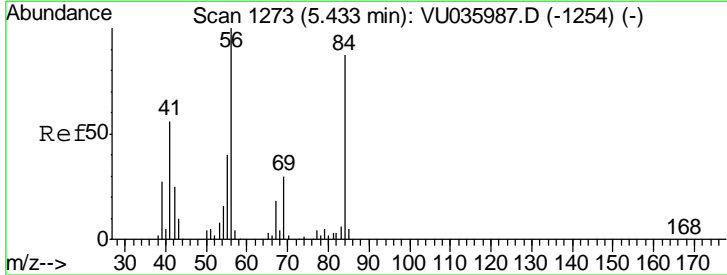
Instrument :  
 MSVOA\_U  
 ClientSampled :  
 BFQR3

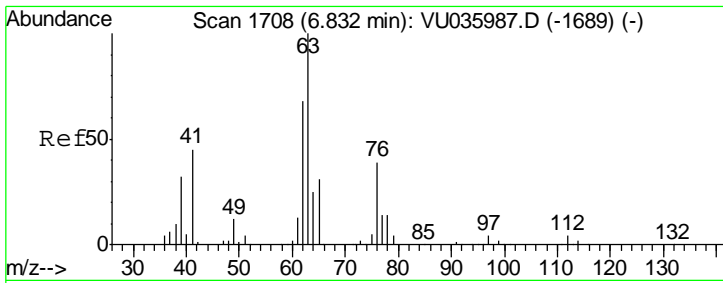
Tgt Ion: 43 Resp: 9157  
 Ion Ratio Lower Upper  
 43 100  
 74 0.2 20.0 30.0#



#30  
 Cyclohexane  
 Concen: 0.129 ug/L  
 RT: 5.43 min Scan# 1272  
 Delta R.T. -0.00 min  
 Lab File: VU036008.D  
 Acq: 05 Dec 2019 21:08

Tgt Ion: 56 Resp: 4576  
 Ion Ratio Lower Upper  
 56 100  
 69 33.0 24.0 36.0  
 84 81.7 66.9 100.3

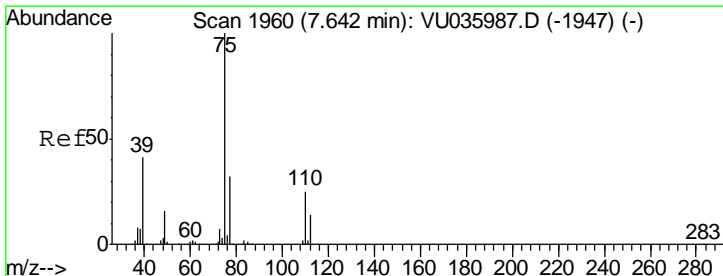
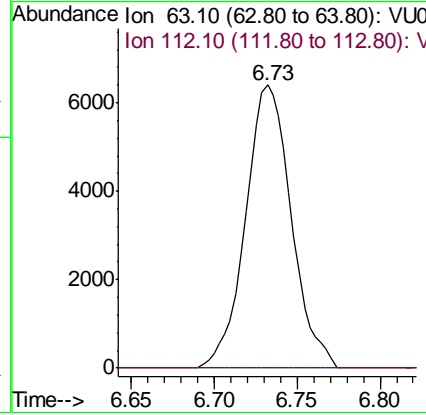
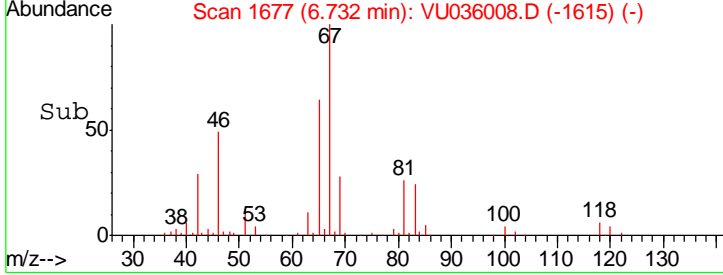
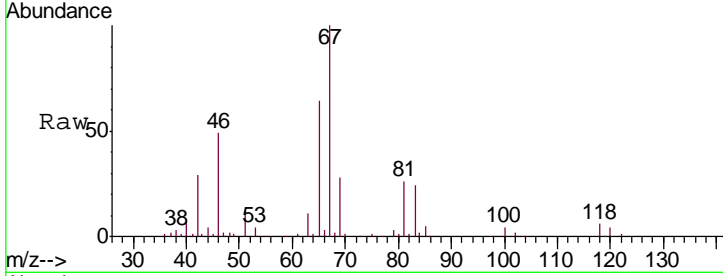




#37  
 1,2-Dichloropropane  
 Concen: 0.486 ug/L  
 RT: 6.73 min Scan# 1677  
 Delta R.T. -0.10 min  
 Lab File: VU036008.D  
 Acq: 05 Dec 2019 21:08

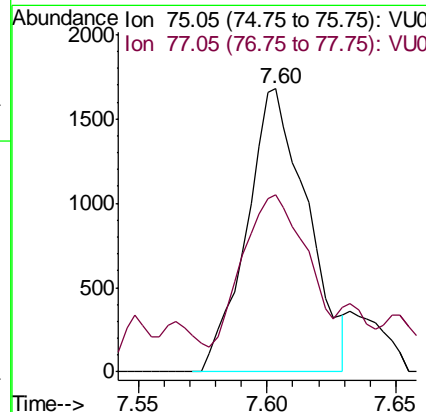
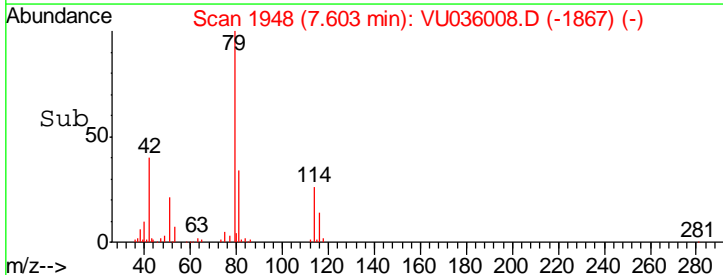
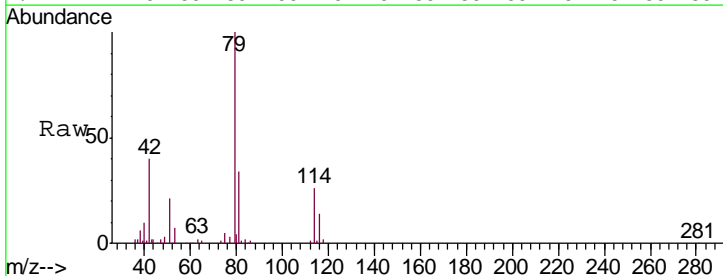
**Instrument :**  
 MSVOA\_U  
**ClientSampled :**  
 BFQR3

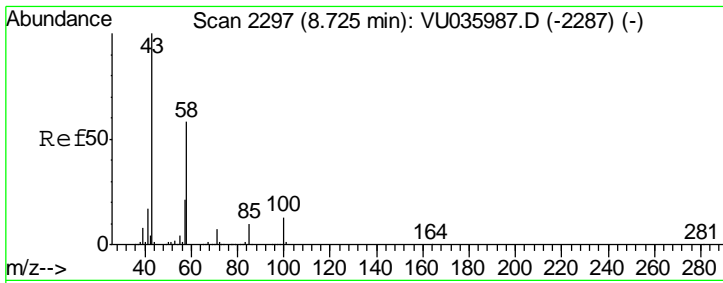
Tgt Ion: 63 Resp: 12275  
 Ion Ratio Lower Upper  
 63 100  
 112 0.2 3.3 4.9#



#39  
 cis-1,3-Dichloropropene  
 Concen: 0.082 ug/L  
 RT: 7.60 min Scan# 1948  
 Delta R.T. -0.04 min  
 Lab File: VU036008.D  
 Acq: 05 Dec 2019 21:08

Tgt Ion: 75 Resp: 2749  
 Ion Ratio Lower Upper  
 75 100  
 77 62.6 21.9 40.7#



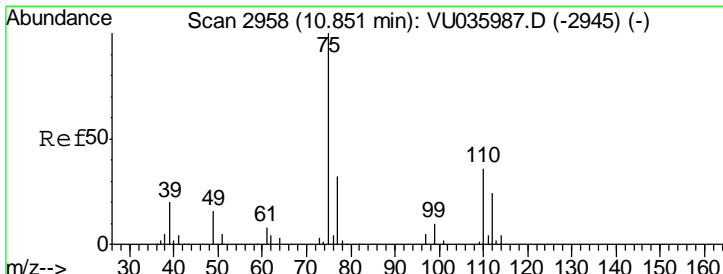
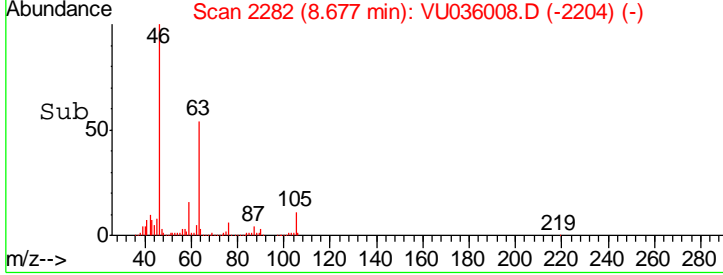
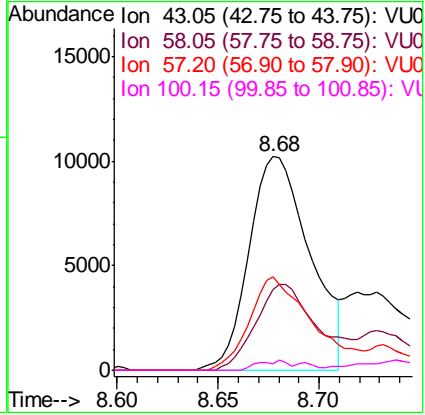
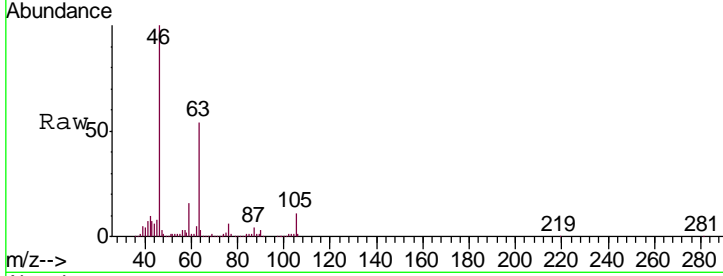


#48  
 2-Hexanone  
 Concen: 1.969 ug/L  
 RT: 8.68 min Scan# 2282  
 Delta R.T. -0.05 min  
 Lab File: VU036008.D  
 Acq: 05 Dec 2019 21:08

Instrument : MSVOA\_U  
 ClientSampled : BFQR3

Tgt Ion: 43 Resp: 21583

Ion	Ratio	Lower	Upper
43	100		
58	42.3	45.4	68.2#
57	45.5	14.9	22.3#
100	2.2	8.6	13.0#



#59  
 1,2,3-Trichloropropane  
 Concen: 0.743 ug/L  
 RT: 11.84 min Scan# 3265  
 Delta R.T. 0.99 min  
 Lab File: VU036008.D  
 Acq: 05 Dec 2019 21:08

Tgt Ion: 75 Resp: 12192

Ion	Ratio	Lower	Upper
75	100		
77	38.4	26.6	39.8

