

Data Path : Z:\VOASRV\HPCHEM1\MSVOA U\DATA\VU120519\
 Data File : VU036001.D
 Acq On : 05 Dec 2019 18:20
 Operator : JC/SP
 Sample : K6132-02
 Misc : 25.0mL/MSVOA U/WATER
 ALS Vial : 17 Sample Multiplier: 1

Instrument :
 MSVOA_U
 ClientSampled :
 BFQR0

Integration Parameters: rteint.p
 Integrator: RTE
 Smoothing : ON
 Sampling : 1
 Start Thrs: 0.1
 Stop Thrs : 0

Filtering: 5
 Min Area: 3 % of largest Peak
 Max Peaks: 100
 Peak Location: TOP

If leading or trailing edge < 100 prefer < Baseline drop else tangent >
 Peak separation: 5

Method : Z:\VOASRV\HPCHEM1\MSVOA_U\METHOD\SOMUTR120319WMA.M
 Title : TRACE VOA SOM01.0

Signal : TIC

peak #	R.T. min	first scan	max scan	last scan	PK TY	peak height	corr. area	corr. % max.	% of total
1	1.372	4	10	26	rBV2	38474	46319	3.55%	0.466%
2	1.613	76	85	93	rBV2	219498	263304	20.19%	2.648%
3	1.932	176	184	196	rVB	157586	202157	15.50%	2.033%
4	2.401	323	330	343	rVB5	34841	65059	4.99%	0.654%
5	2.591	376	389	406	rBV	250002	408306	31.31%	4.106%
6	2.691	409	420	450	rVB3	8737	27069	2.08%	0.272%
7	2.822	451	461	475	rBV	9219	18261	1.40%	0.184%
8	3.919	785	802	818	rBV2	35152	82311	6.31%	0.828%
9	4.710	1028	1048	1090	rBV3	182805	630133	48.32%	6.336%
10	5.112	1157	1173	1197	rBV	217698	492188	37.74%	4.949%
11	5.771	1358	1378	1410	rBV2	435128	1120029	85.89%	11.262%
12	6.292	1525	1540	1567	rBV	339667	660887	50.68%	6.645%
13	6.732	1662	1677	1700	rBV	269610	544368	41.74%	5.474%
14	7.604	1936	1948	1974	rBV2	119458	242856	18.62%	2.442%
15	7.932	2031	2050	2067	rBV	469862	834378	63.98%	8.390%
16	8.002	2067	2072	2083	rVV2	17842	32338	2.48%	0.325%
17	8.070	2087	2093	2105	rVB9	7799	13385	1.03%	0.135%
18	8.214	2126	2138	2150	rBV2	77490	146369	11.22%	1.472%
19	8.681	2262	2283	2323	rBV	565471	1304077	100.00%	13.113%
20	8.822	2324	2327	2343	rVB7	8510	17607	1.35%	0.177%
21	9.449	2508	2522	2544	rBV	494403	887547	68.06%	8.924%
22	9.716	2592	2605	2618	rBV10	11973	28878	2.21%	0.290%
23	9.919	2653	2668	2677	rBV7	6987	13417	1.03%	0.135%
24	10.784	2925	2937	2964	rVB	240870	411001	31.52%	4.133%
25	11.838	3250	3265	3280	rBV	401174	684240	52.47%	6.880%
26	12.218	3369	3383	3399	rBV	445844	745363	57.16%	7.495%
27	17.114	4899	4906	4917	rVB4	14581	23272	1.78%	0.234%

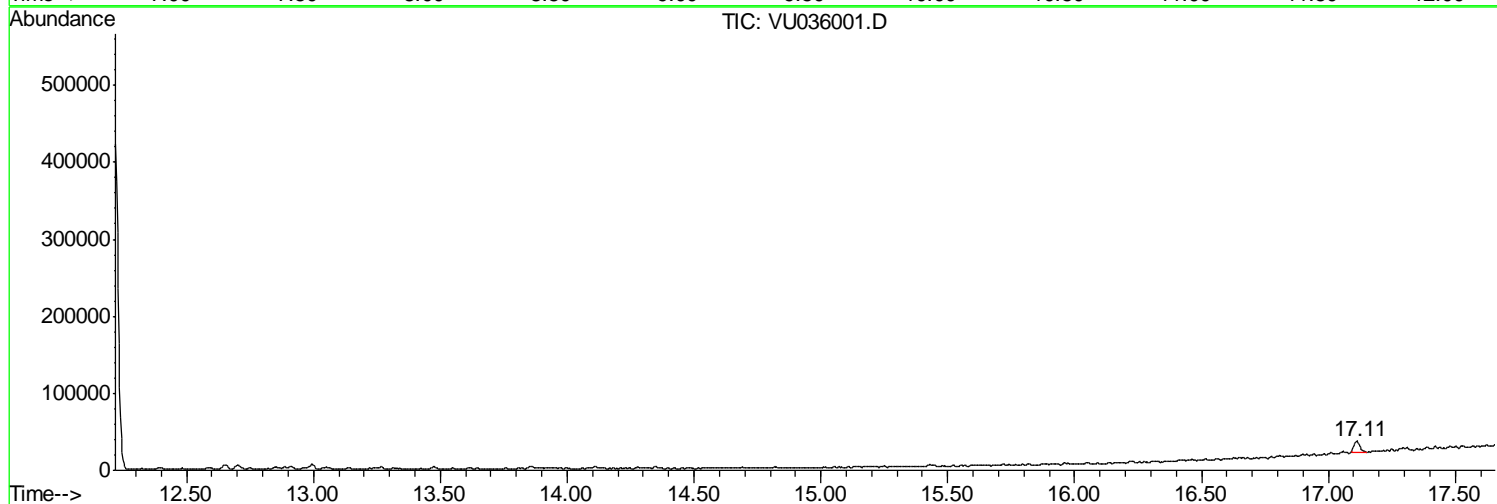
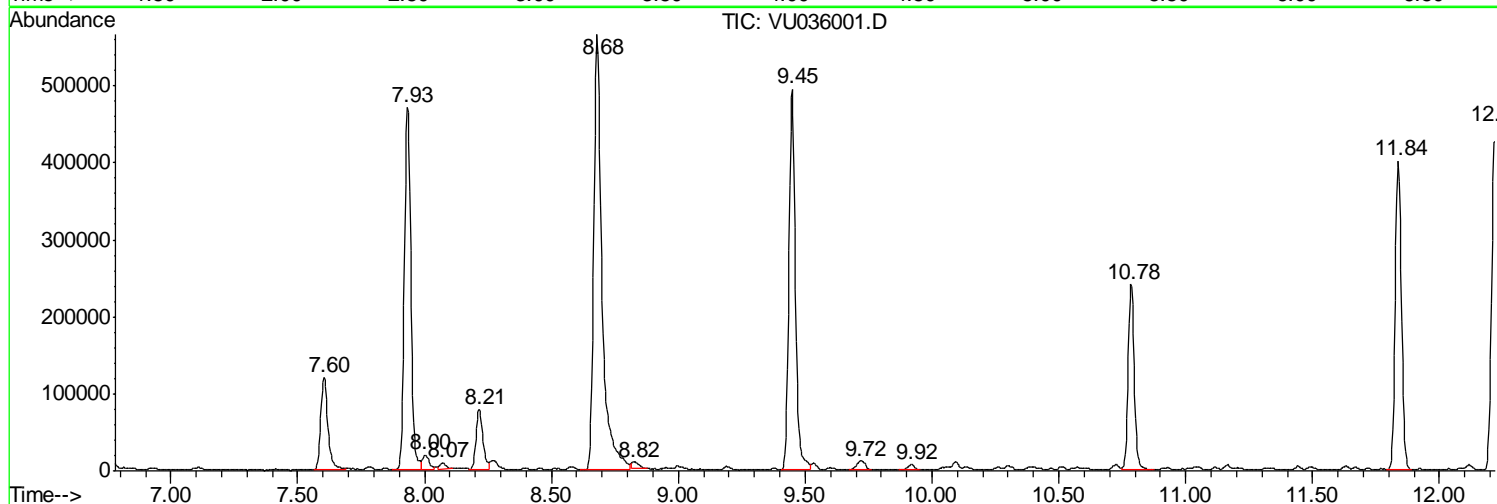
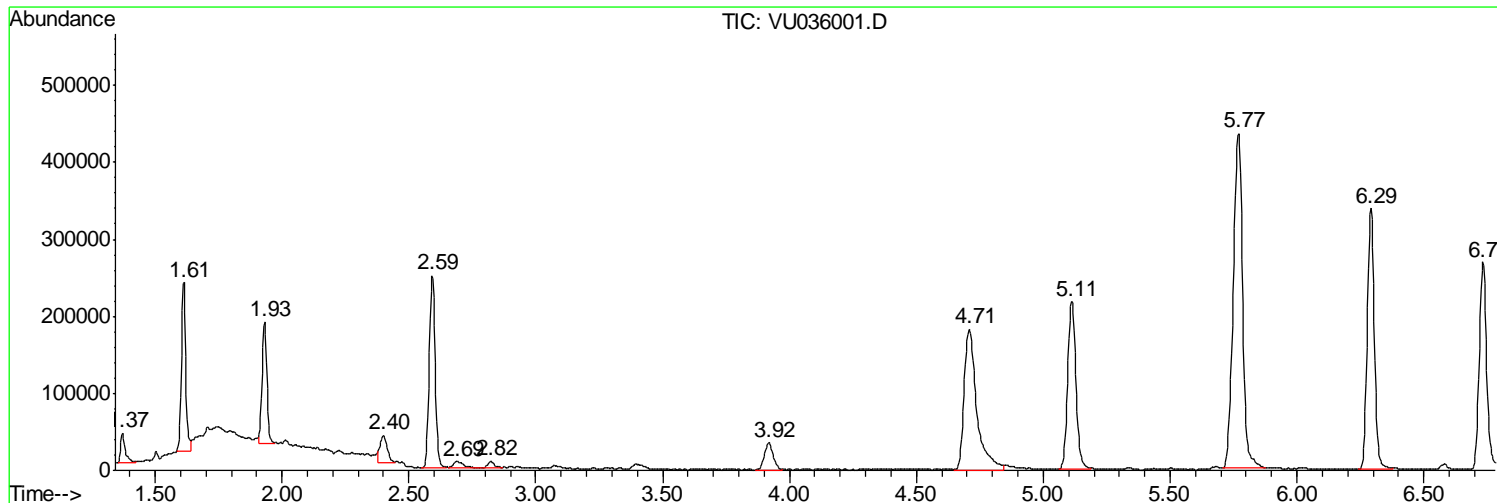
Sum of corrected areas: 9945119

Data Path : Z:\VOASRV\HPCHEM1\MSVOA U\DATA\VU120519\
 Data File : VU036001.D
 Acq On : 05 Dec 2019 18:20
 Operator : JC/SP
 Sample : K6132-02
 Misc : 25.0mL/MSVOA U/WATER
 ALS Vial : 17 Sample Multiplier: 1

Instrument :
 MSVOA_U
 ClientSampleID :
 BFQR0

Quant Method : Z:\VOASRV\HPCHEM1\MSVOA_U\METHOD\SOMUTR120319WMA.M
 Quant Title : TRACE VOA SOM01.0

TIC Library : C:\DATABASE\NIST11.L
 TIC Integration Parameters: LSCINT.P



Data Path : Z:\VOASRV\HPCHEM1\MSVOA_U\DATA\VU120519\
Data File : VU036001.D
Acq On : 05 Dec 2019 18:20
Operator : JC/SP
Sample : K6132-02
Misc : 25.0mL/MSVOA_U/WATER
ALS Vial : 17 Sample Multiplier: 1

Instrument :
MSVOA_U
ClientSampleId :
BFQR0

Quant Method : Z:\VOASRV\HPCHEM1\MSVOA_U\METHOD\SOMUTR120319WMA.M
Quant Title : TRACE VOA SOM01.0

TIC Library : C:\DATABASE\NIST11.L
TIC Integration Parameters: LSCINT.P

No Library Search Compounds Detected

Data Path : Z:\VOASRV\HPCHEM1\MSVOA_U\DATA\VU120519\
Data File : VU036001.D
Acq On : 05 Dec 2019 18:20
Operator : JC/SP
Sample : K6132-02
Misc : 25.0mL/MSVOA_U/WATER
ALS Vial : 17 Sample Multiplier: 1

Instrument :
MSVOA_U
ClientSampleId :
BFQR0

Quant Method : Z:\VOASRV\HPCHEM1\MSVOA_U\METHOD\SOMUTR120319WMA.M
Quant Title : TRACE VOA SOM01.0

TIC Library : C:\DATABASE\NIST11.L
TIC Integration Parameters: LSCINT.P

TIC Top Hit name	RT	EstConc	Units	Response	--Internal Standard--			
					#	RT	Resp	Conc
