

Data Path : Z:\voasrv\HPCHEM1\MSVOA_U\Data\VU120523\
 Data File : VU056652.D
 Acq On : 05 Dec 2023 12:05
 Operator : MD/SY
 Sample : 05582-03
 Misc : 25mL/MSVOA_U/WATER
 ALS Vial : 5 Sample Multiplier: 1

Instrument :
 MSVOA_U
 ClientSampleId :
 VHBLK001

Integration Parameters: rteint.p
 Integrator: RTE
 Smoothing : ON Filtering: 5
 Sampling : 1 Min Area: 3 % of largest Peak
 Start Thrs: 0.1 Max Peaks: 100
 Stop Thrs : 0 Peak Location: TOP

If leading or trailing edge < 100 prefer < Baseline drop else tangent >
 Peak separation: 5

Method : Z:\voasrv\HPCHEM1\MSVOA_U\Method\SFAMUTR111323WMA.M
 Title : TRACE VOA SFAM1.0

Signal : TIC: VU056652.D\data.ms

peak #	R.T. min	first scan	max scan	last scan	PK TY	peak height	corr. area	corr. % max.	% of total
1	1.595	87	95	105	rBV	107019	122114	12.24%	1.555%
2	1.911	184	193	206	rBV	92289	121962	12.22%	1.553%
3	2.563	384	396	410	rBV	187698	313206	31.39%	3.987%
4	3.049	536	547	552	rBV5	7968	15408	1.54%	0.196%
5	3.181	576	588	593	rBV2	12104	22367	2.24%	0.285%
6	4.628	1026	1038	1074	rBV	138837	417653	41.85%	5.317%
7	5.055	1157	1171	1189	rBV	188936	431888	43.28%	5.498%
8	5.721	1360	1378	1401	rBV2	356580	920124	92.21%	11.713%
9	6.245	1529	1541	1561	rBV2	311000	602178	60.35%	7.666%
10	6.531	1623	1630	1637	rVB2	7288	11029	1.11%	0.140%
11	6.685	1664	1678	1701	rVB2	226206	459266	46.02%	5.847%
12	7.563	1935	1951	1963	rBV	108401	200115	20.05%	2.548%
13	7.894	2043	2054	2077	rBV	391566	717180	71.87%	9.130%
14	8.177	2133	2142	2156	rBV2	61734	107865	10.81%	1.373%
15	8.631	2269	2283	2314	rBV2	492884	997872	100.00%	12.703%
16	9.415	2516	2527	2559	rVB	424264	771018	77.27%	9.815%
17	10.749	2931	2942	2960	rBV2	165309	279854	28.05%	3.563%
18	10.894	2981	2987	2995	rVB3	7934	11328	1.14%	0.144%
19	11.807	3259	3271	3293	rBV	419808	699917	70.14%	8.910%
20	12.187	3377	3389	3406	rBV	372232	632981	63.43%	8.058%

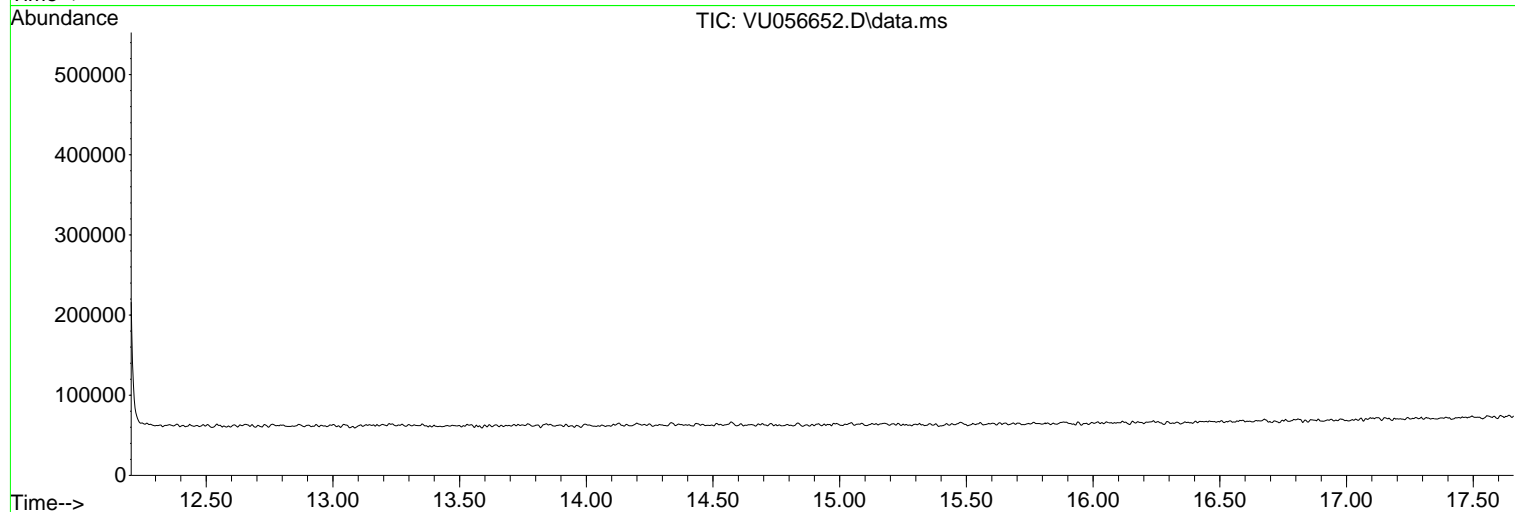
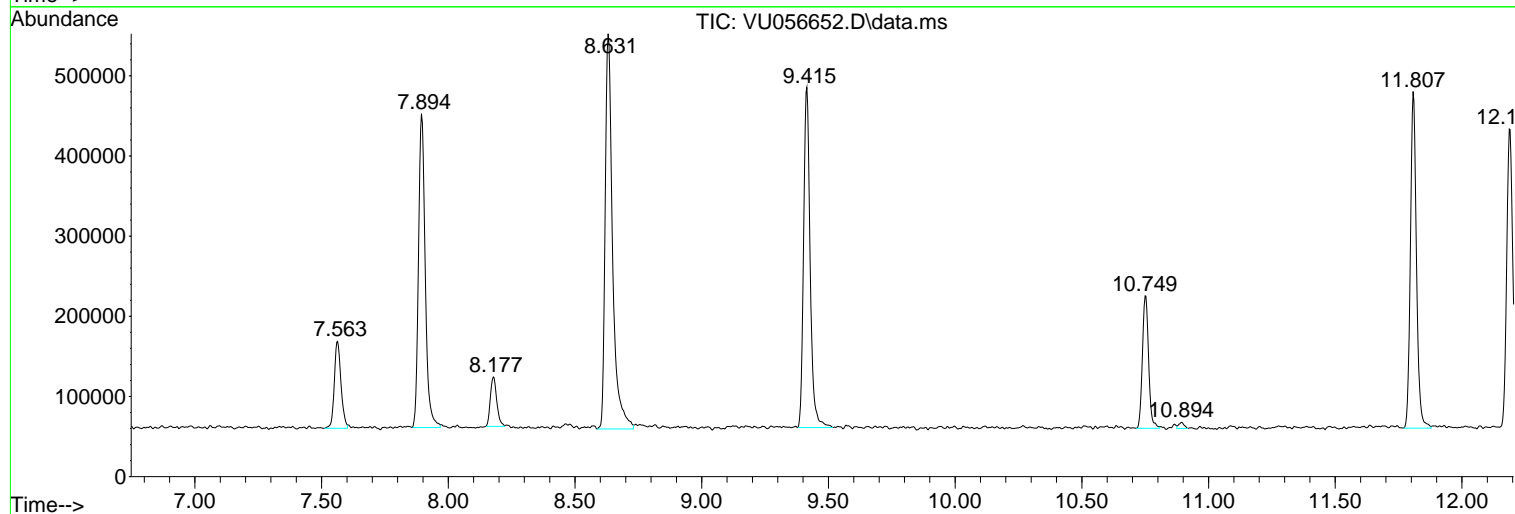
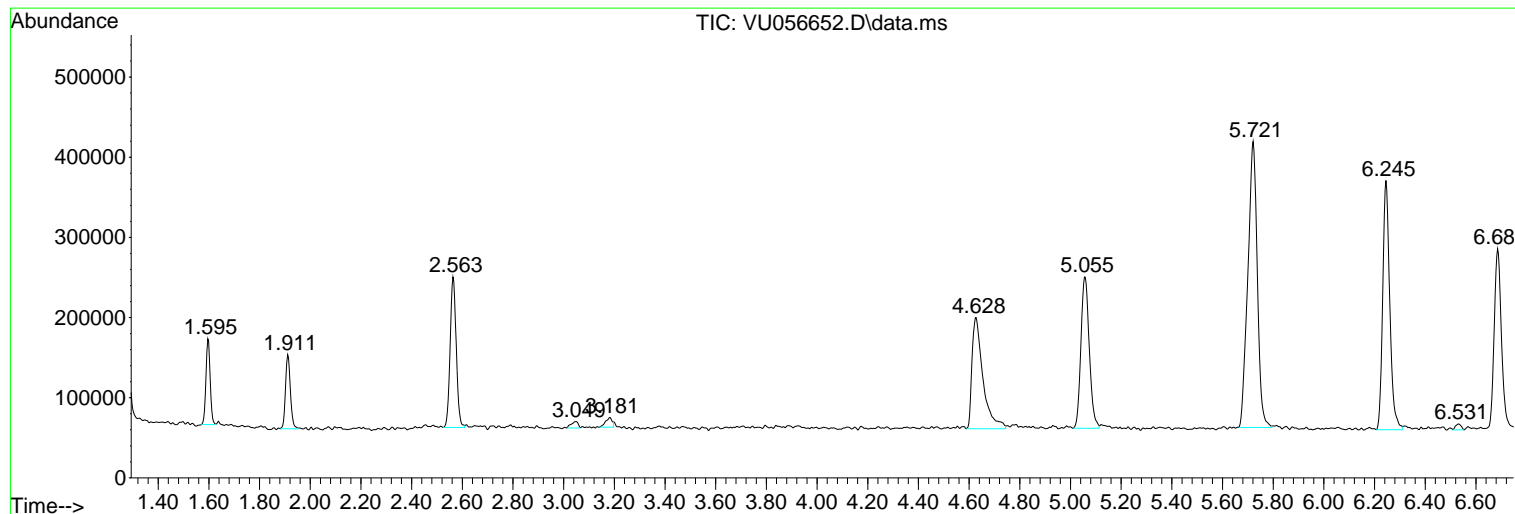
Sum of corrected areas: 7855325

Data Path : Z:\voasrv\HPCHEM1\MSVOA_U\Data\VU120523\
Data File : VU056652.D
Acq On : 05 Dec 2023 12:05
Operator : MD/SY
Sample : 05582-03
Misc : 25mL/MSVOA_U/WATER
ALS Vial : 5 Sample Multiplier: 1

Instrument :
MSVOA_U
ClientSampleId :
VHBLK001

Quant Method : Z:\voasrv\HPCHEM1\MSVOA_U\Method\SFAMUTR111323WMA.M
Quant Title : TRACE VOA SFAM1.0

TIC Library : C:\Database\NIST20.L
TIC Integration Parameters: LSCINT.P



Library Search Compound Report

Data Path : Z:\voasrv\HPCHEM1\MSVOA_U\Data\VU120523\
Data File : VU056652.D
Acq On : 05 Dec 2023 12:05
Operator : MD/SY
Sample : 05582-03
Misc : 25mL/MSVOA_U/WATER
ALS Vial : 5 Sample Multiplier: 1

Instrument :
MSVOA_U
ClientSampleId :
VHBLK001

Quant Method : Z:\voasrv\HPCHEM1\MSVOA_U\Method\SFAMUTR111323WMA.M
Quant Title : TRACE VOA SFAM1.0

TIC Library : C:\Database\NIST20.L
TIC Integration Parameters: LSCINT.P

No Library Search Compounds Detected

Data Path : Z:\voasrv\HPCHEM1\MSVOA_U\Data\VU120523\
Data File : VU056652.D
Acq On : 05 Dec 2023 12:05
Operator : MD/SY
Sample : 05582-03
Misc : 25mL/MSVOA_U/WATER
ALS Vial : 5 Sample Multiplier: 1

Instrument :
MSVOA_U
ClientSampleId :
VHBLK001

Quant Method : Z:\voasrv\HPCHEM1\MSVOA_U\Method\SFAMUTR111323WMA.M
Quant Title : TRACE VOA SFAM1.0

TIC Library : C:\Database\NIST0.L
TIC Integration Parameters: LSCINT.P

TIC Top Hit name	RT	EstConc	Units	Response	--Internal Standard--		
					#	RT	Resp Conc
