

Data Path : Z:\VOASRV\HPCHEM1\MSVOA U\DATA\VU120618\  
 Data File : VU028513.D  
 Acq On : 06 Dec 2018 20:04  
 Operator : MD/SY  
 Sample : J6252-12  
 Misc : 5.0mL/MSVOA U/WATER  
 ALS Vial : 23 Sample Multiplier: 1

Instrument :  
 MSVOA\_U  
 ClientSampleId :  
 CPA-RB1-M16W4-11-27-18

Quant Time: Dec 07 06:17:18 2018  
 Quant Method : Z:\VOASRV\HPCHEM1\MSVOA\_U\METHOD\82U120618W.M  
 Quant Title : SW846 8260  
 QLast Update : Fri Dec 07 00:39:42 2018  
 Response via : Initial Calibration

Internal Standards	R.T.	QIon	Response	Conc	Units	Dev(Min)
1) Pentafluorobenzene	4.98	168	95103	50.00	ug/l	0.00
34) 1,4-Difluorobenzene	5.89	114	180137	50.00	ug/l	0.00
63) Chlorobenzene-d5	9.09	117	171214	50.00	ug/l	0.00
72) 1,4-Dichlorobenzene-d4	11.48	152	80104	50.00	ug/l	0.00

System Monitoring Compounds

33) 1,2-Dichloroethane-d4	5.31	65	82407	56.78	ug/l	0.00
Spiked Amount				50.000		
			Recovery	=	113.56%	
35) Dibromofluoromethane	4.88	113	60732	53.57	ug/l	0.00
Spiked Amount				50.000		
			Recovery	=	107.14%	
50) Toluene-d8	7.57	98	236144	52.66	ug/l	0.00
Spiked Amount				50.000		
			Recovery	=	105.32%	
62) 4-Bromofluorobenzene	10.30	95	86350	51.52	ug/l	0.00
Spiked Amount				50.000		
			Recovery	=	103.04%	

Target Compounds

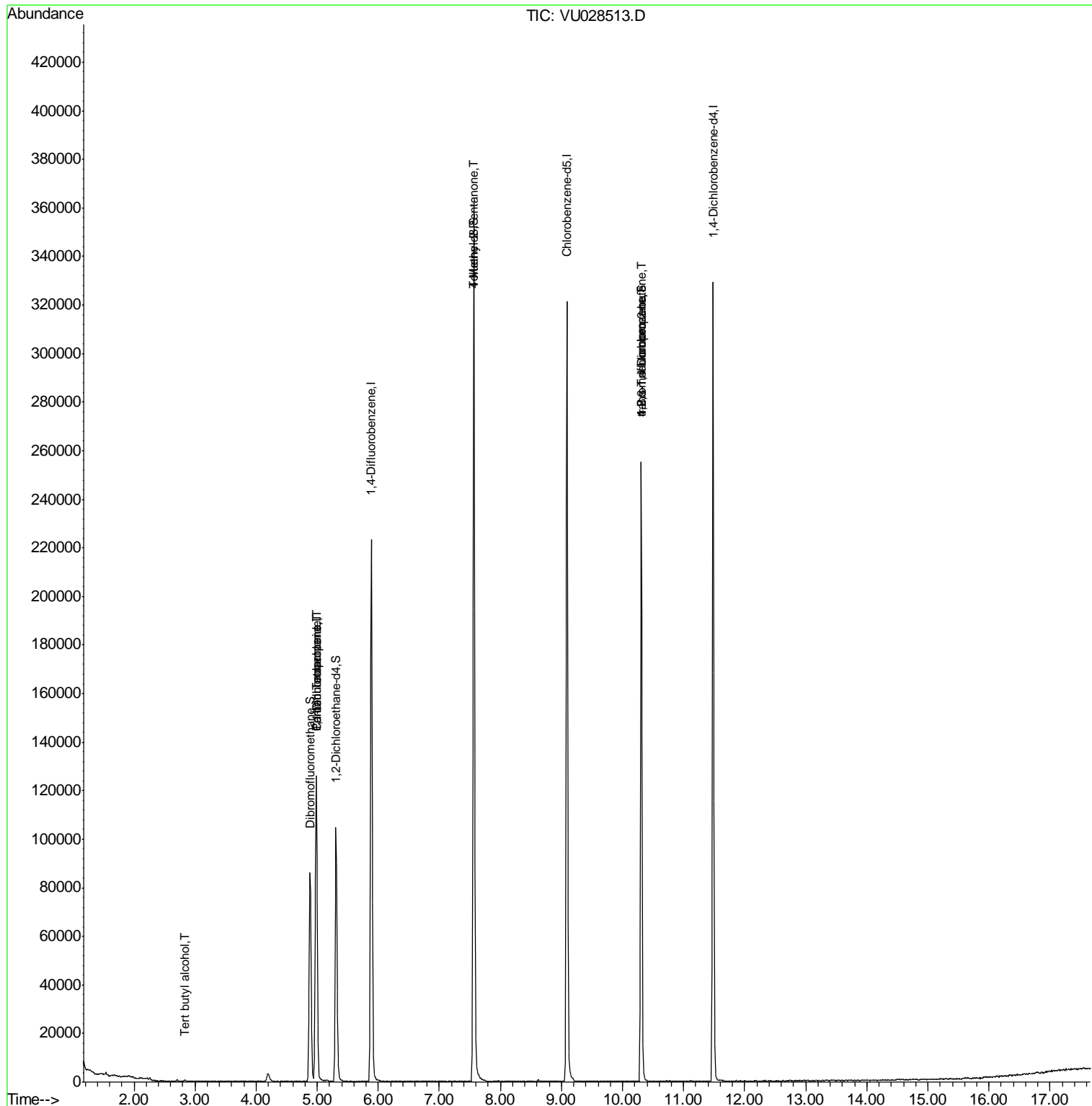
					Qvalue	
11) Tert butyl alcohol	2.84	59	278	0.860	ug/l #	73
31) Cyclohexane	4.98	56	2559	Below Cal	#	1
36) 1,1-Dichloropropene	4.99	75	8270	4.195	ug/l #	50
38) Carbon Tetrachloride	4.99	117	9545	6.008	ug/l #	15
51) 4-Methyl-2-Pentanone	7.56	43	1190	0.468	ug/l #	1
76) 1,2,3-Trichloropropane	10.31	75	45037	22.018	ug/l #	36
81) trans-1,4-Dichloro-2-buten	10.31	75	45037	54.092	ug/l #	100

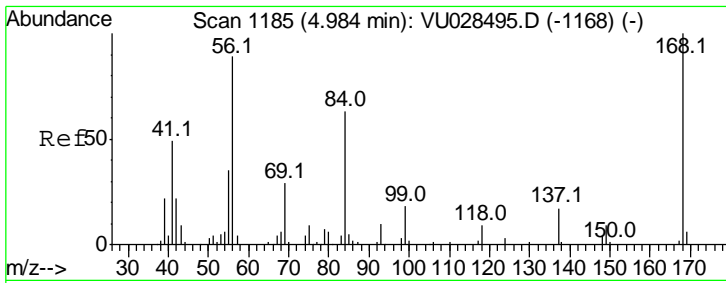
(#) = qualifier out of range (m) = manual integration (+) = signals summed

Data Path : Z:\VOASRV\HPCHEM1\MSVOA U\DATA\VU120618\  
 Data File : VU028513.D  
 Acq On : 06 Dec 2018 20:04  
 Operator : MD/SY  
 Sample : J6252-12  
 Misc : 5.0mL/MSVOA U/WATER  
 ALS Vial : 23 Sample Multiplier: 1

Instrument :  
 MSVOA\_U  
 ClientSampleId :  
 CPA-RB1-M16W4-11-27-18

Quant Time: Dec 07 06:17:18 2018  
 Quant Method : Z:\VOASRV\HPCHEM1\MSVOA\_U\METHOD\82U120618W.M  
 Quant Title : SW846 8260  
 QLast Update : Fri Dec 07 00:39:42 2018  
 Response via : Initial Calibration

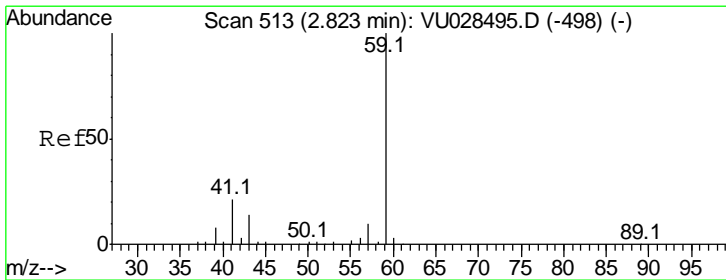
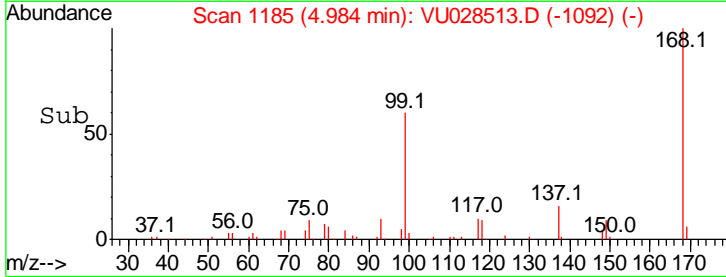
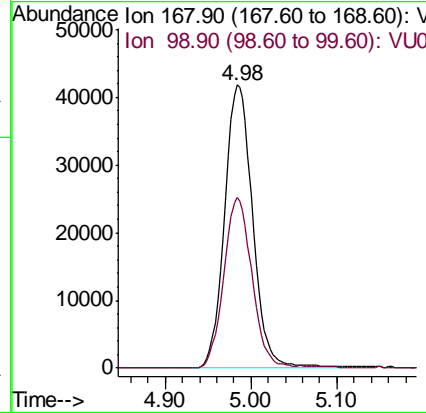
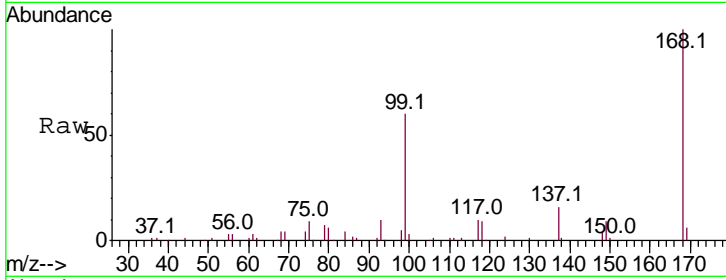




#1  
 Pentafluorobenzene  
 Concen: 50.000 ug/l  
 RT: 4.98 min Scan# 1185  
 Delta R.T. -0.00 min  
 Lab File: VU028513.D  
 Acq: 06 Dec 2018 20:04

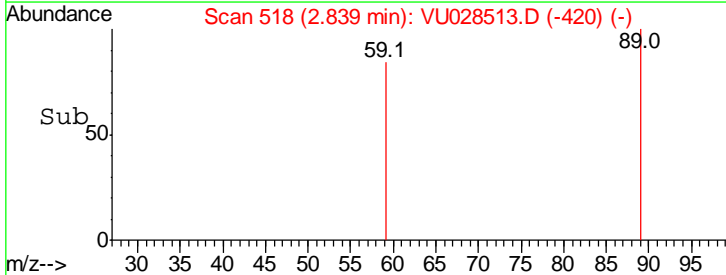
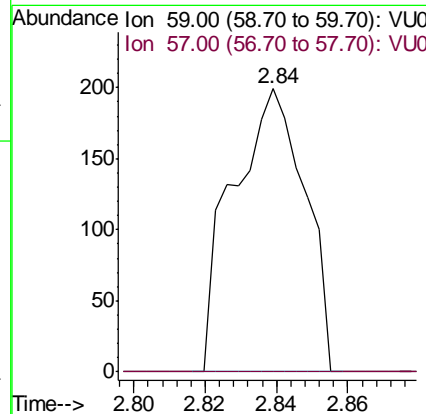
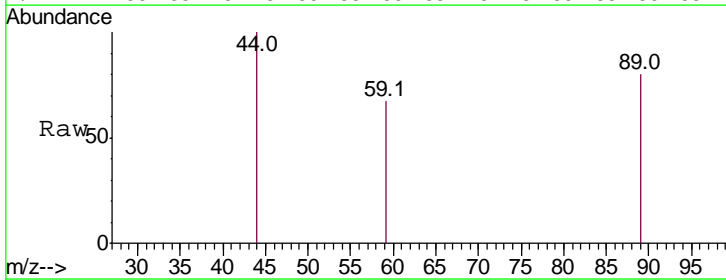
Instrument : MSVOA\_U  
 ClientSampleId : CPA-RB1-M16W4-11-27-18

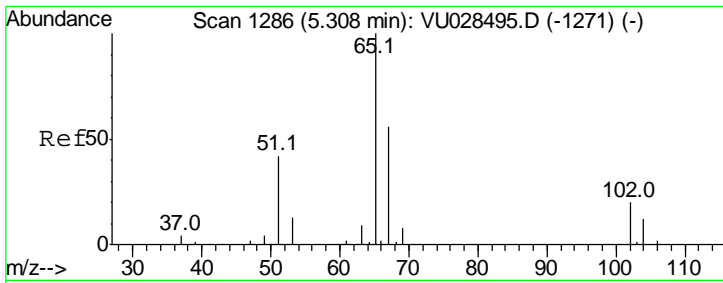
Tgt Ion: 168 Resp: 95103  
 Ion Ratio Lower Upper  
 168 100  
 99 60.2 46.6 69.8



#11  
 Tert butyl alcohol  
 Concen: 0.860 ug/l  
 RT: 2.84 min Scan# 513  
 Delta R.T. 0.02 min  
 Lab File: VU028513.D  
 Acq: 06 Dec 2018 20:04

Tgt Ion: 59 Resp: 278  
 Ion Ratio Lower Upper  
 59 100  
 57 0.0 8.0 12.0#



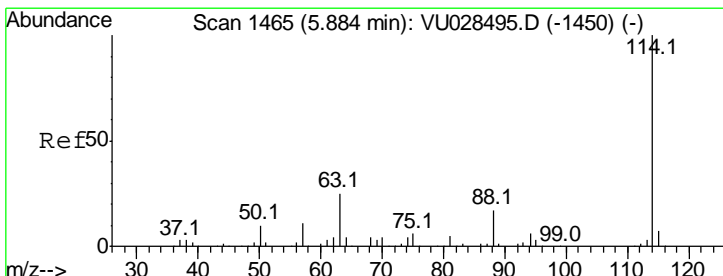
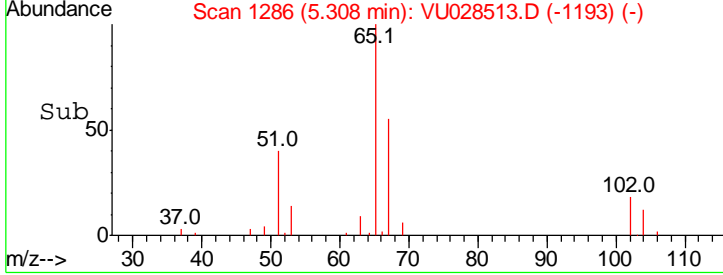
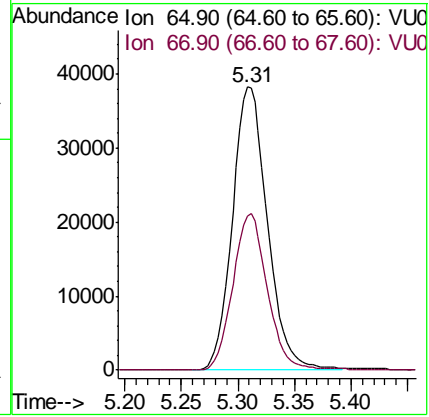
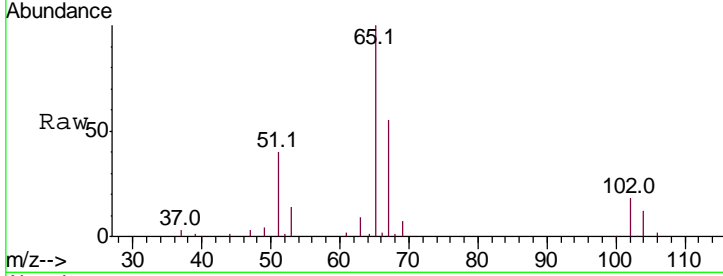


#33  
 1,2-Dichloroethane-d4  
 Concen: 56.780 ug/l  
 RT: 5.31 min Scan# 1286  
 Delta R.T. -0.00 min  
 Lab File: VU028513.D  
 Acq: 06 Dec 2018 20:04

**Instrument :**  
 MSVOA\_U  
**ClientSampled :**  
 CPA-RB1-M16W4-11-27-18

Tgt Ion: 65 Resp: 82407

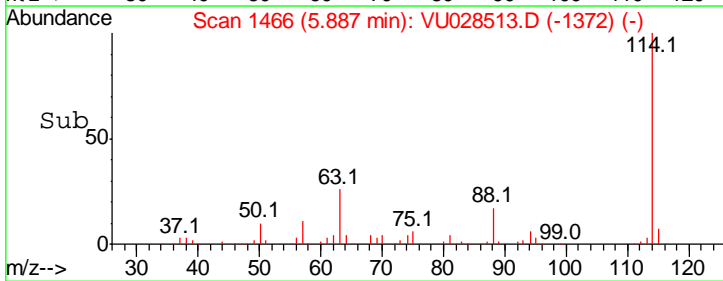
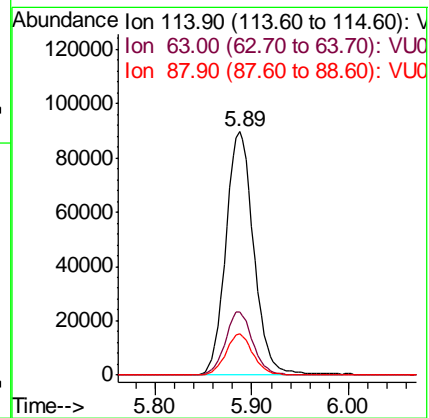
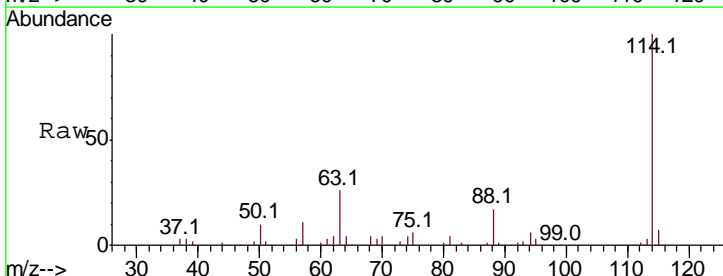
Ion	Ratio	Lower	Upper
65	100		
67	54.5	0.0	110.6

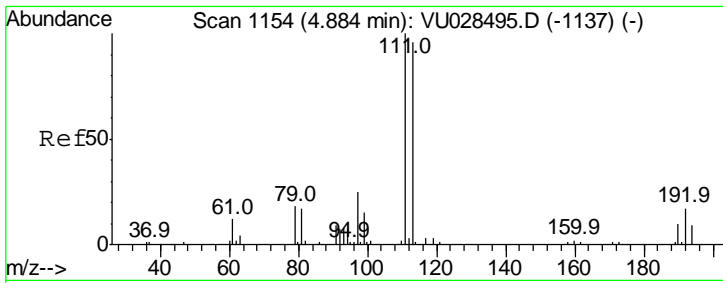


#34  
 1,4-Difluorobenzene  
 Concen: 50.000 ug/l  
 RT: 5.89 min Scan# 1466  
 Delta R.T. 0.00 min  
 Lab File: VU028513.D  
 Acq: 06 Dec 2018 20:04

Tgt Ion: 114 Resp: 180137

Ion	Ratio	Lower	Upper
114	100		
63	25.9	0.0	49.2
88	16.9	0.0	33.4

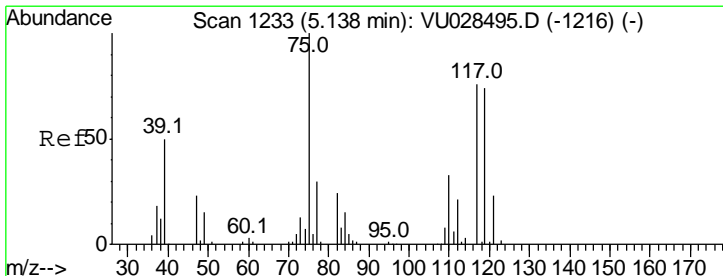
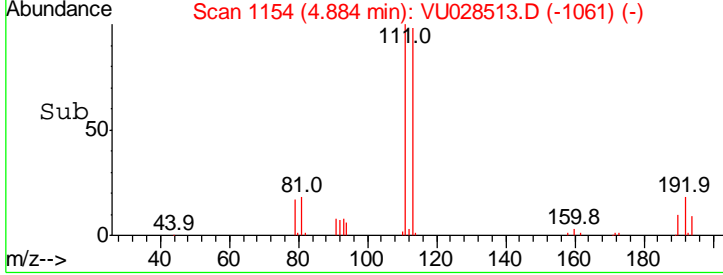
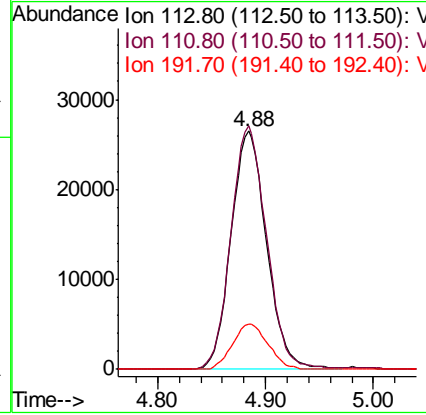
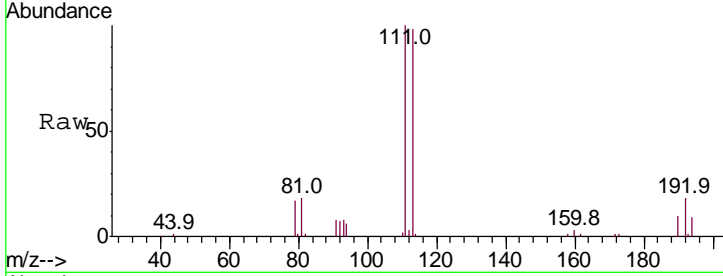




#35  
 Dibromofluoromethane  
 Concen: 53.574 ug/l  
 RT: 4.88 min Scan# 1154  
 Delta R.T. -0.00 min  
 Lab File: VU028513.D  
 Acq: 06 Dec 2018 20:04

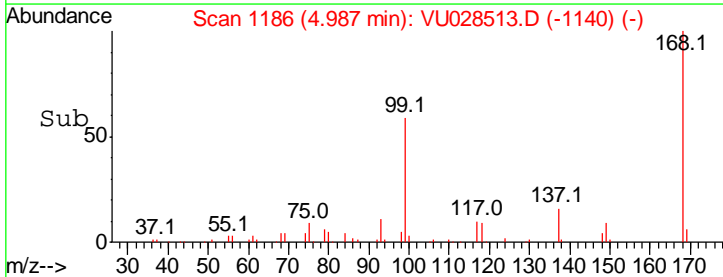
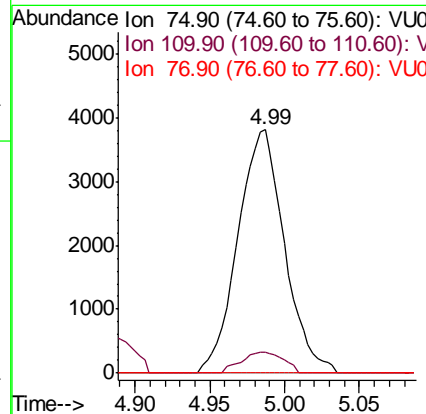
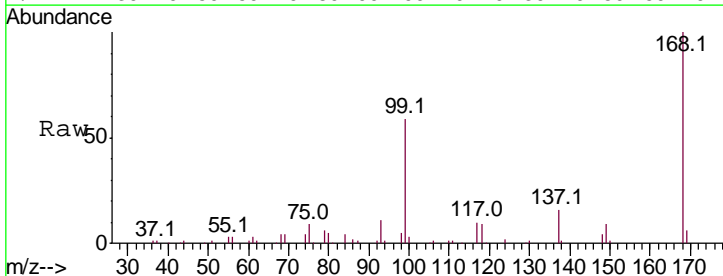
Instrument : MSVOA\_U  
 ClientSampled : CPA-RB1-M16W4-11-27-18

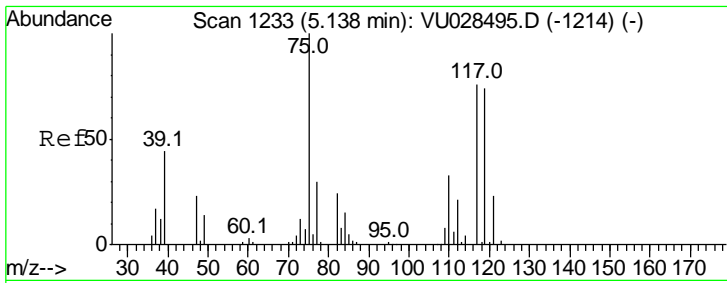
Tgt Ion	Resp	Lower	Upper
113	60732		
111	102.4	83.4	125.0
192	18.9	14.8	22.2



#36  
 1,1-Dichloropropene  
 Concen: 4.195 ug/l  
 RT: 4.99 min Scan# 1186  
 Delta R.T. -0.15 min  
 Lab File: VU028513.D  
 Acq: 06 Dec 2018 20:04

Tgt Ion	Resp	Lower	Upper
75	8270		
110	7.8	16.1	48.2#
77	0.0	24.5	36.7#

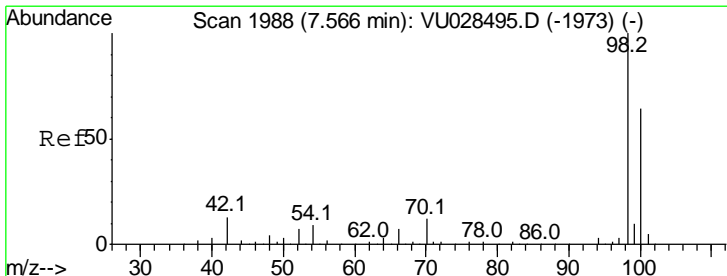
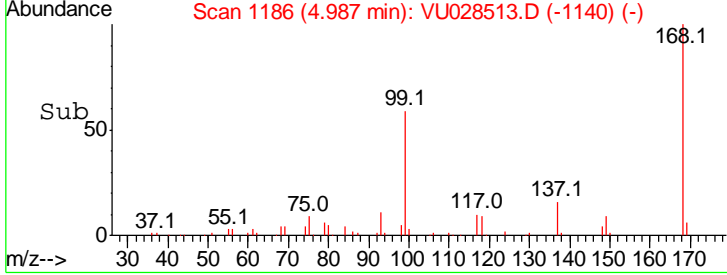
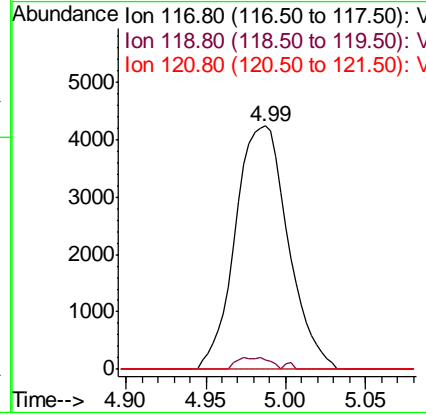
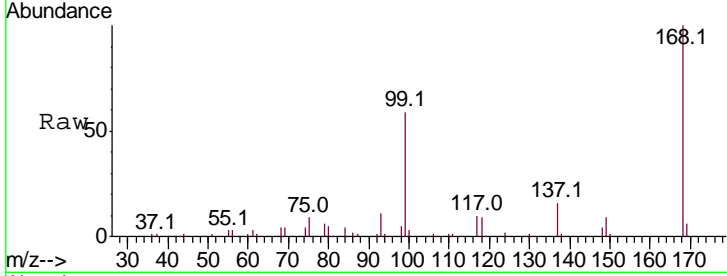




#38  
 Carbon Tetrachloride  
 Concen: 6.008 ug/l  
 RT: 4.99 min Scan# 1186  
 Delta R.T. -0.15 min  
 Lab File: VU028513.D  
 Acq: 06 Dec 2018 20:04

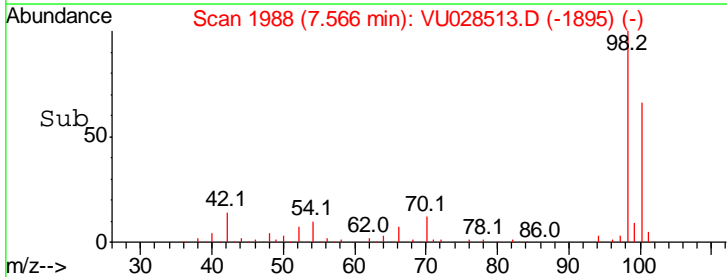
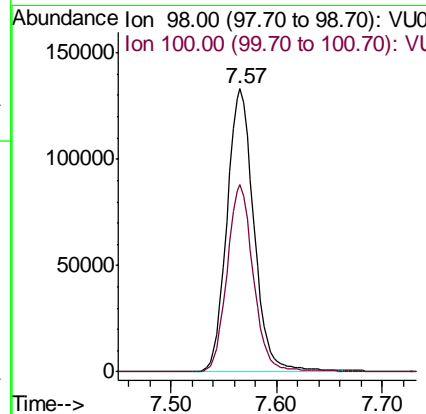
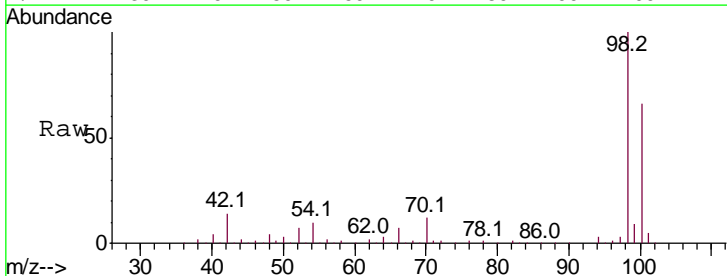
**Instrument :**  
 MSVOA\_U  
**ClientSampled :**  
 CPA-RB1-M16W4-11-27-18

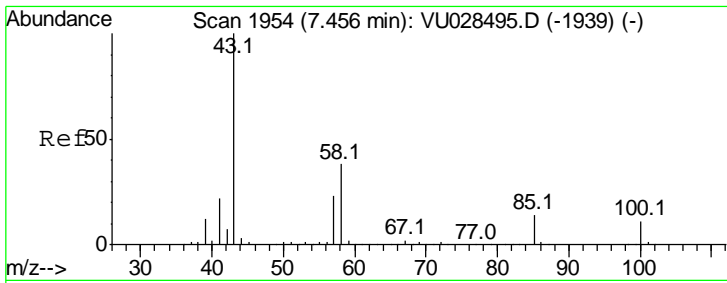
Tgt Ion	Resp	Lower	Upper
117	100		
119	4.1	77.6	116.4#
121	0.0	24.6	36.8#



#50  
 Toluene-d8  
 Concen: 52.659 ug/l  
 RT: 7.57 min Scan# 1988  
 Delta R.T. -0.00 min  
 Lab File: VU028513.D  
 Acq: 06 Dec 2018 20:04

Tgt Ion	Resp	Lower	Upper
98	100		
100	64.6	51.0	76.6

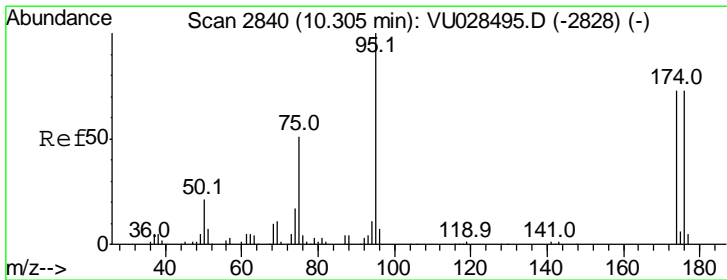
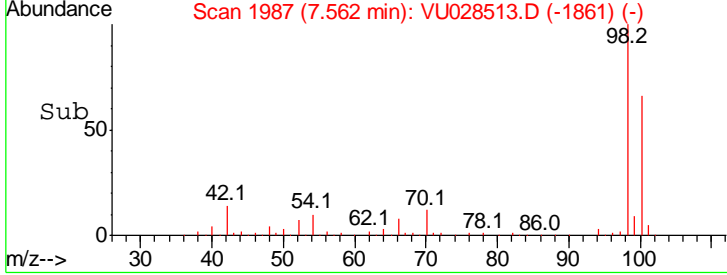
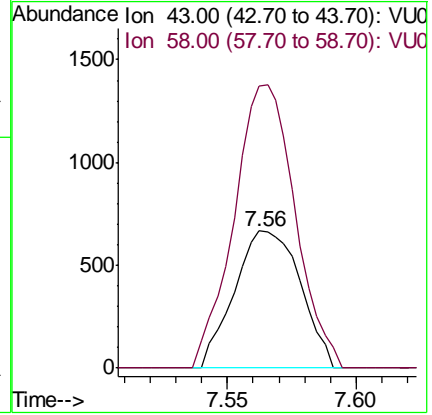
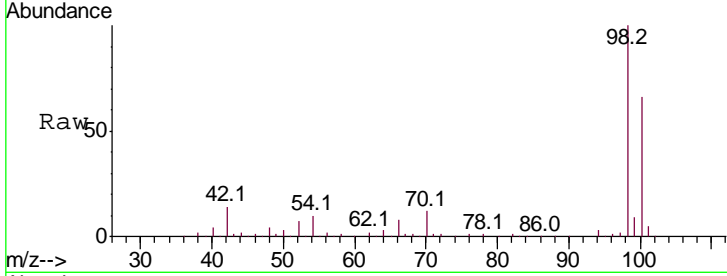




#51  
 4-Methyl-2-Pentanone  
 Concen: 0.468 ug/l  
 RT: 7.56 min Scan# 1987  
 Delta R.T. 0.11 min  
 Lab File: VU028513.D  
 Acq: 06 Dec 2018 20:04

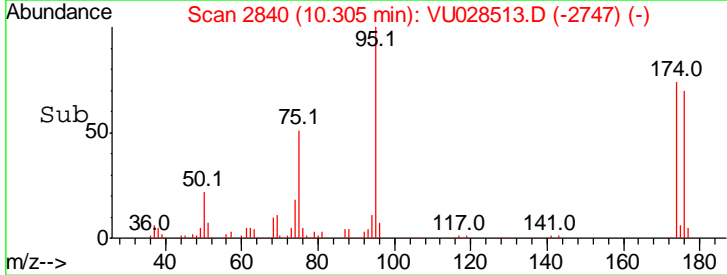
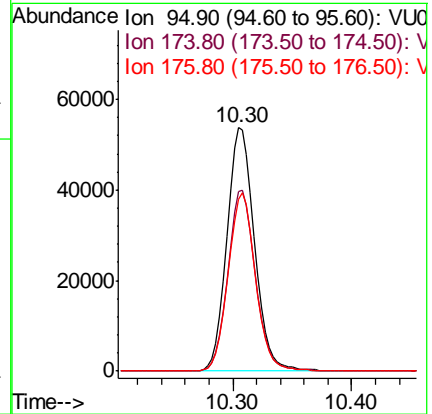
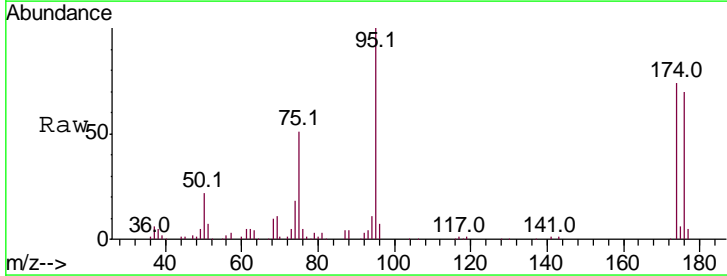
Instrument : MSVOA\_U  
 ClientSampled : CPA-RB1-M16W4-11-27-18

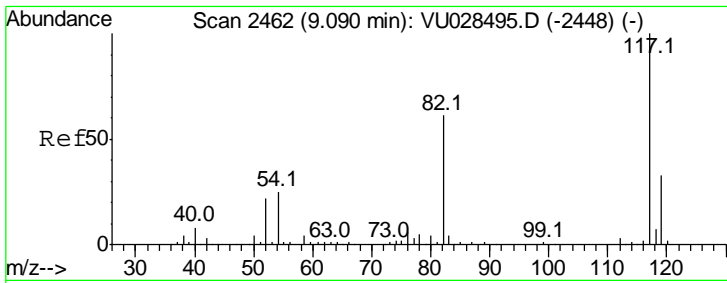
Tgt Ion	Resp	Lower	Upper
43	100		
58	191.3	30.2	45.2#



#62  
 4-Bromofluorobenzene  
 Concen: 51.518 ug/l  
 RT: 10.30 min Scan# 2840  
 Delta R.T. -0.00 min  
 Lab File: VU028513.D  
 Acq: 06 Dec 2018 20:04

Tgt Ion	Resp	Lower	Upper
95	100		
174	73.9	0.0	150.4
176	72.4	0.0	145.2

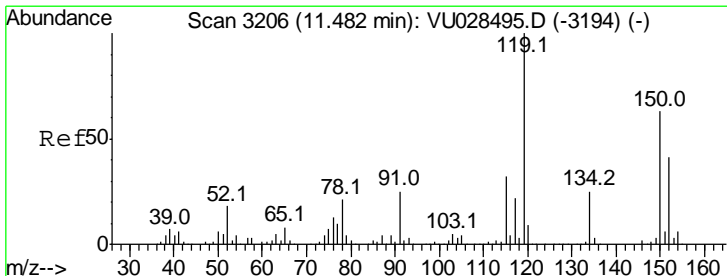
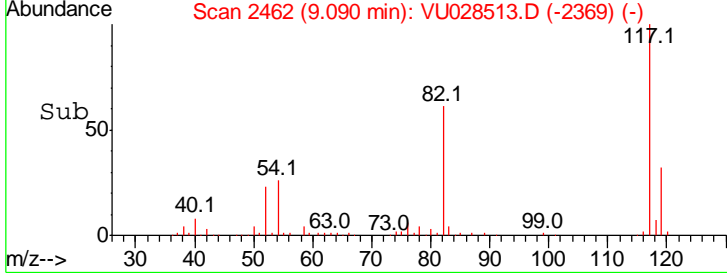
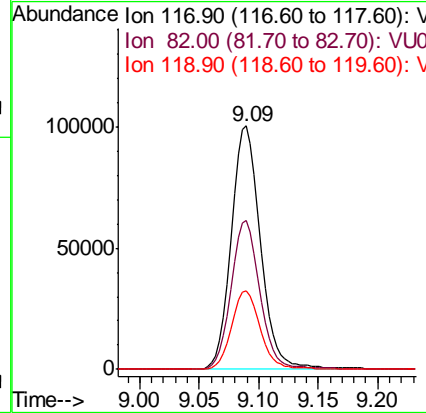
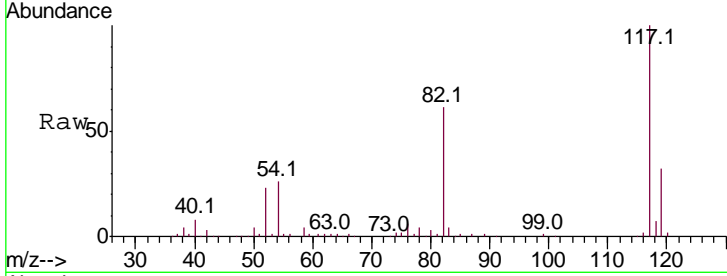




#63  
 Chlorobenzene-d5  
 Concen: 50.000 ug/l  
 RT: 9.09 min Scan# 2462  
 Delta R.T. -0.00 min  
 Lab File: VU028513.D  
 Acq: 06 Dec 2018 20:04

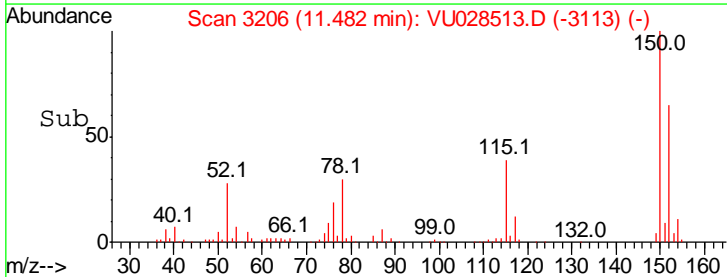
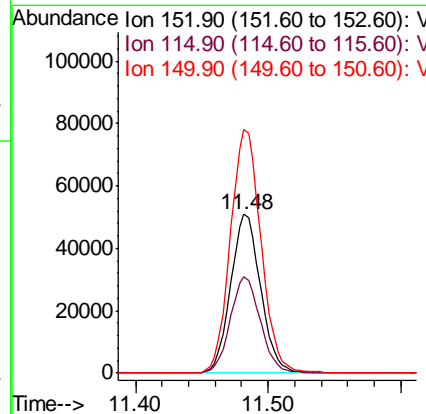
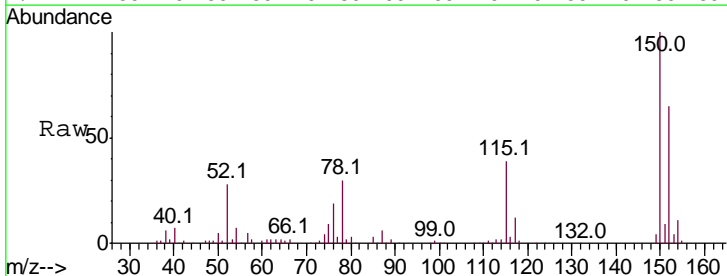
Instrument : MSVOA\_U  
 ClientSampleId : CPA-RB1-M16W4-11-27-18

Tgt Ion	Resp	Lower	Upper
117	100		
82	61.0	48.9	73.3
119	32.4	26.2	39.4

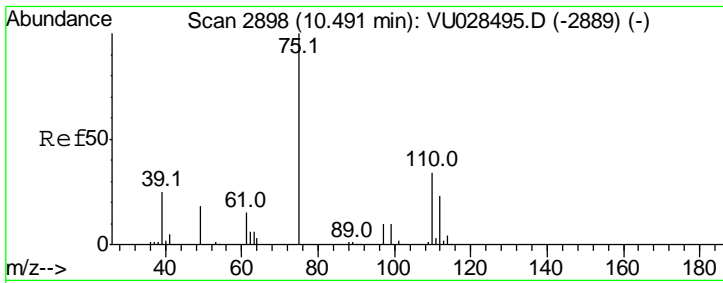


#72  
 1,4-Dichlorobenzene-d4  
 Concen: 50.000 ug/l  
 RT: 11.48 min Scan# 3206  
 Delta R.T. -0.00 min  
 Lab File: VU028513.D  
 Acq: 06 Dec 2018 20:04

Tgt Ion	Resp	Lower	Upper
152	100		
115	60.8	42.7	128.1
150	156.6	0.0	346.0



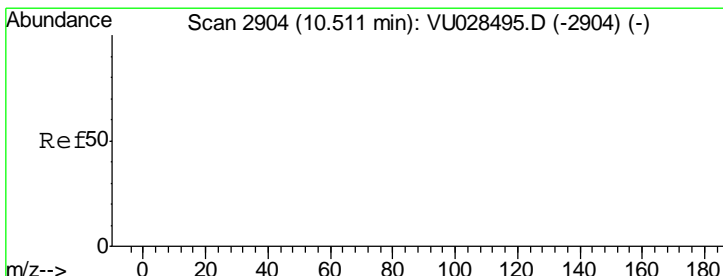
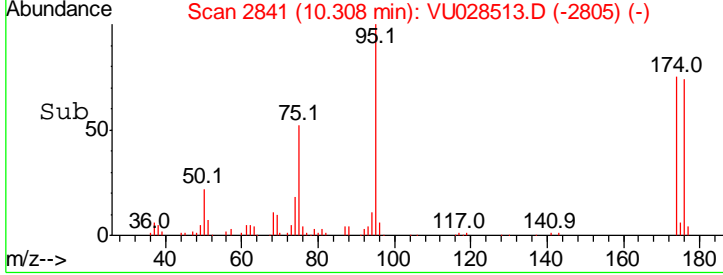
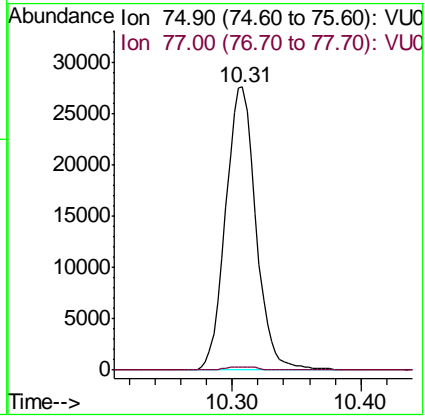
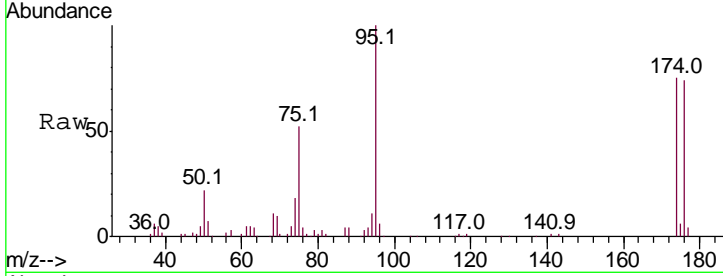




#76  
 1,2,3-Trichloropropane  
 Concen: 22.018 ug/l  
 RT: 10.31 min Scan# 2841  
 Delta R.T. -0.18 min  
 Lab File: VU028513.D  
 Acq: 06 Dec 2018 20:04

**Instrument :**  
 MSVOA\_U  
**ClientSampled :**  
 CPA-RB1-M16W4-11-27-18

Tgt Ion:	75	Resp:	45037
Ion Ratio	Lower	Upper	
75	100		
77	1.2	20.8	62.4#



#81  
 trans-1,4-Dichloro-2-butene  
 Concen: 54.092 ug/l  
 RT: 10.31 min Scan# 2841  
 Delta R.T. -0.20 min  
 Lab File: VU028513.D  
 Acq: 06 Dec 2018 20:04

Tgt Ion:	75	Resp:	45037
Ion Ratio	Lower	Upper	
75	100		
53	0.0	0.0	0.0
89	0.0	0.0	0.0

