

Data File : VU036035.D
 Acq On : 06 Dec 2019 20:16
 Operator : JC/SP
 Sample : K6105-14DL 10X
 Misc : 25.0mL/MSVOA_U/WATER
 ALS Vial : 25 Sample Multiplier: 1

Instrument :
 MSVOA_U
 ClientSampleId :
 BFE33DL

Quant Time: Dec 06 22:38:43 2019
 Quant Method : Z:\VOASRV\HPCHEM1\MSVOA_U\METHOD\SOMUTR120319WMA.M
 Quant Title : TRACE VOA SOM01.0
 QLast Update : Fri Dec 06 22:30:31 2019
 Response via : Initial Calibration

Internal Standards	R.T.	QIon	Response	Conc	Units	Dev(Min)
1) 1,4-Difluorobenzene	6.29	114	278093	5.00	ug/L	0.00
28) Chlorobenzene-d5	9.45	117	294119	5.00	ug/L	0.00
60) 1,4-Dichlorobenzene-d4	11.84	152	98191	5.00	ug/L	0.00

System Monitoring Compounds

4) Vinyl Chloride-d3	1.61	65	135299	4.27	ug/L	0.00
Spiked Amount	5.000	Range	40 - 130	Recovery	=	85.40%
7) Chloroethane-d5	1.93	69	146771	5.78	ug/L	0.00
Spiked Amount	5.000	Range	65 - 130	Recovery	=	115.60%
11) 1,1-Dichloroethene-d2	2.59	63	173134	3.80	ug/L	0.00
Spiked Amount	5.000	Range	60 - 125	Recovery	=	76.00%
20) 2-Butanone-d5	4.70	46	272599	48.56	ug/L	0.00
Spiked Amount	50.000	Range	40 - 130	Recovery	=	97.12%
24) Chloroform-d	5.11	84	213609	4.91	ug/L	0.00
Spiked Amount	5.000	Range	70 - 125	Recovery	=	98.20%
26) 1,2-Dichloroethane-d4	5.75	65	114801	4.98	ug/L	0.00
Spiked Amount	5.000	Range	70 - 130	Recovery	=	99.60%
32) Benzene-d6	5.77	84	422782	4.85	ug/L	0.00
Spiked Amount	5.000	Range	70 - 125	Recovery	=	97.00%
36) 1,2-Dichloropropane-d6	6.73	67	131599	4.67	ug/L	0.00
Spiked Amount	5.000	Range	60 - 140	Recovery	=	93.40%
41) Toluene-d8	7.93	98	354740	4.42	ug/L	0.00
Spiked Amount	5.000	Range	70 - 130	Recovery	=	88.40%
43) trans-1,3-Dichloropropene-	8.21	79	50666	4.45	ug/L	0.00
Spiked Amount	5.000	Range	55 - 130	Recovery	=	89.00%
46) 2-Hexanone-d5	8.68	63	225542	50.34	ug/L	0.00
Spiked Amount	50.000	Range	45 - 130	Recovery	=	100.68%
57) 1,1,2,2-Tetrachloroethane-	10.78	84	113152	4.77	ug/L	0.00
Spiked Amount	5.000	Range	65 - 120	Recovery	=	95.40%
64) 1,2-Dichlorobenzene-d4	12.22	152	114445	5.64	ug/L	0.00
Spiked Amount	5.000	Range	80 - 120	Recovery	=	112.80%

Target Compounds

						Qvalue
3) Chloromethane	1.54	50	4091	0.124	ug/L	86
10) 1,1,2-Trichloro-1,2,2-trif	2.60	101	9409	0.440	ug/L #	89
12) 1,1-Dichloroethene	2.61	96	40419	2.028	ug/L #	77
16) Methylene chloride	3.08	84	6101	0.198	ug/L	94
19) 1,1-Dichloroethane	3.92	63	12609	0.306	ug/L	95
22) cis-1,2-Dichloroethene	4.71	96	25478	1.143	ug/L	85
29) 1,1,1-Trichloroethane	5.36	97	24864	0.699	ug/L	95
31) Carbon tetrachloride	5.36	117	3067	0.097	ug/L	86
34) Trichloroethene	6.58	95	284526	12.165	ug/L	94
35) Methylcyclohexane	6.73	83	32223	0.919	ug/L #	17
37) 1,2-Dichloropropane	6.73	63	13757	0.549	ug/L #	89
47) Tetrachloroethene	8.58	164	66946	3.522	ug/L	96
48) 2-Hexanone	8.68	43	32484	2.988	ug/L #	66
49) Dibromochloromethane	8.58	129	57963	2.788	ug/L #	12
59) 1,2,3-Trichloropropane	11.84	75	10136	0.623	ug/L	91

Data Path : Z:\VOASRV\HPCHEM1\MSVOA_U\DATA\VU120619\
Quantitation Report (Not Reviewed)

Data File : VU036035.D
Acq On : 06 Dec 2019 20:16
Operator : JC/SP
Sample : K6105-14DL 10X
Misc : 25.0mL/MSVOA_U/WATER
ALS Vial : 25 Sample Multiplier: 1

Instrument :
MSVOA_U
ClientSampleId :
BFE33DL

Quant Time: Dec 06 22:38:43 2019
Quant Method : Z:\VOASRV\HPCHEM1\MSVOA_U\METHOD\SOMUTR120319WMA.M
Quant Title : TRACE VOA SOM01.0
QLast Update : Fri Dec 06 22:30:31 2019
Response via : Initial Calibration

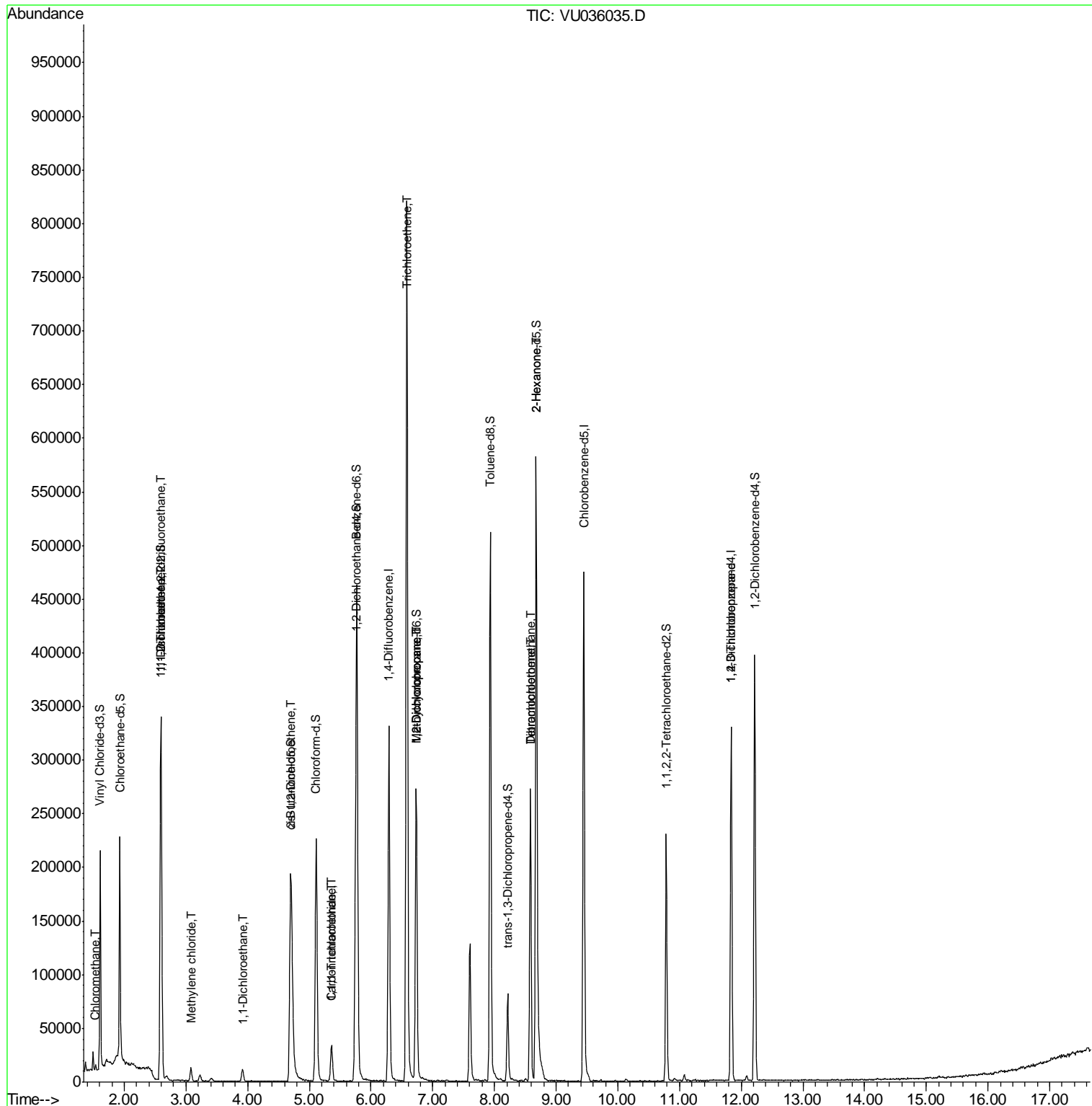
Internal Standards	R.T.	QIon	Response	Conc	Units	Dev(Min)

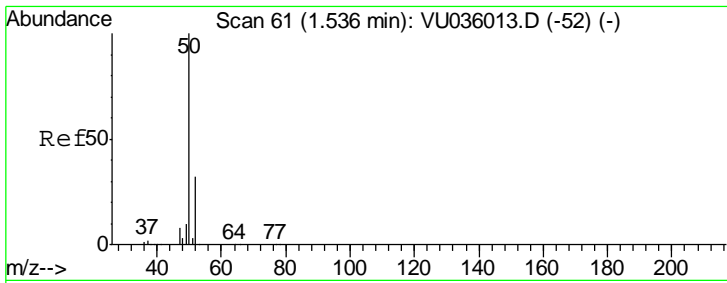
(#) = qualifier out of range (m) = manual integration (+) = signals summed						

Data File : VU036035.D
Acq On : 06 Dec 2019 20:16
Operator : JC/SP
Sample : K6105-14DL 10X
Misc : 25.0mL/MSVOA_U/WATER
ALS Vial : 25 Sample Multiplier: 1

Instrument :
MSVOA_U
Client Sampled :
BFE33DL

Quant Time: Dec 06 22:38:43 2019
Quant Method : Z:\VOASRV\HPCHEM1\MSVOA_U\METHOD\SOMUTR120319WMA.M
Quant Title : TRACE VOA SOM01.0
QLast Update : Fri Dec 06 22:30:31 2019
Response via : Initial Calibration

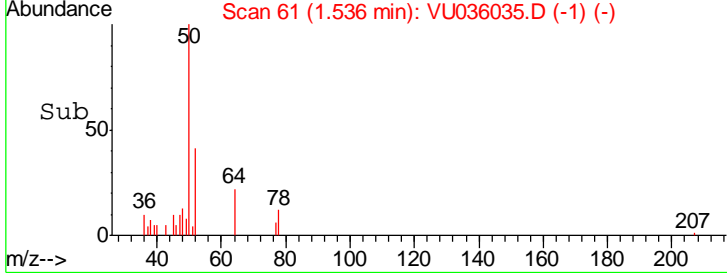
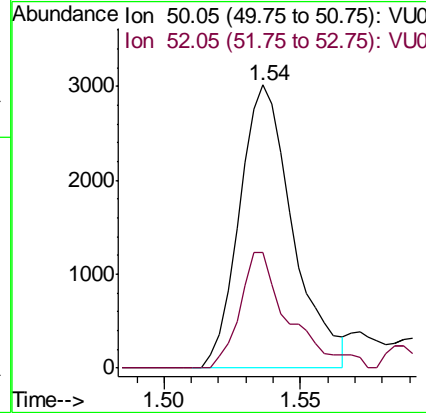
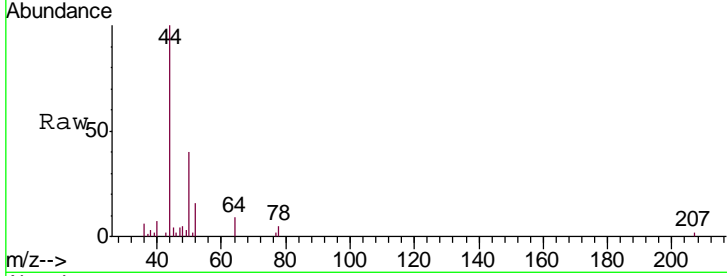




#3
 Chloromethane
 Concen: 0.124 ug/L
 RT: 1.54 min Scan# 61
 Delta R.T. 0.00 min
 Lab File: VU036035.D
 Acq: 06 Dec 2019 20:16

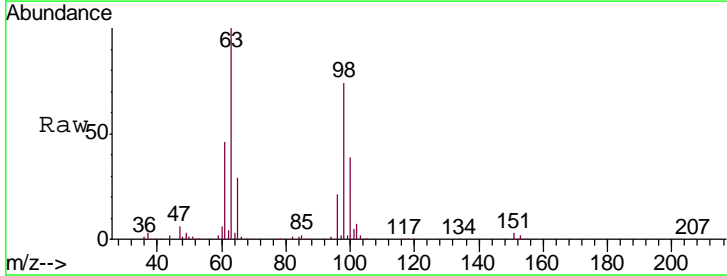
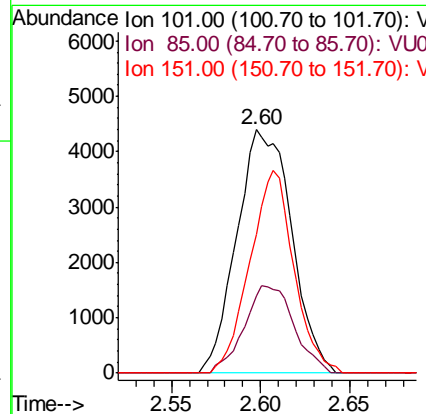
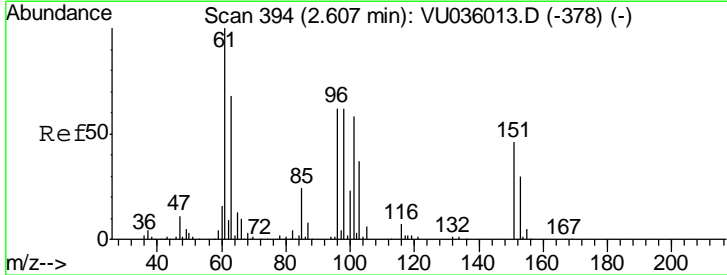
Instrument :
 MSVOA_U
 ClientSampled :
 BFE33DL

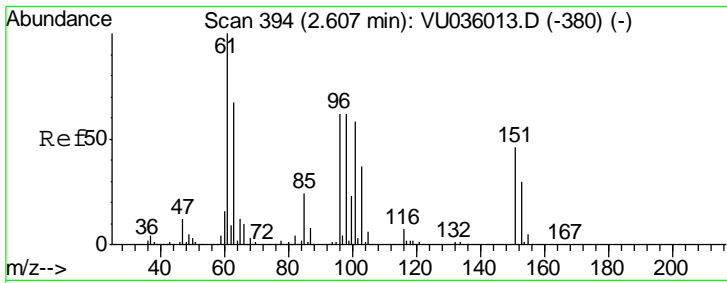
Tgt Ion: 50 Resp: 4091
 Ion Ratio Lower Upper
 50 100
 52 41.0 23.1 42.9



#10
 1,1,2-Trichloro-1,2,2-trifluoroethane
 Concen: 0.440 ug/L
 RT: 2.60 min Scan# 391
 Delta R.T. -0.01 min
 Lab File: VU036035.D
 Acq: 06 Dec 2019 20:16

Tgt Ion: 101 Resp: 9409
 Ion Ratio Lower Upper
 101 100
 85 32.6 35.5 53.3#
 151 67.0 57.5 86.3

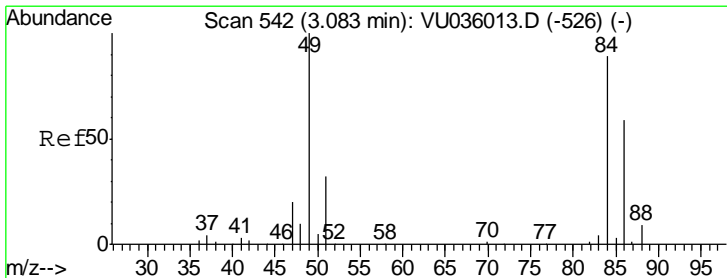
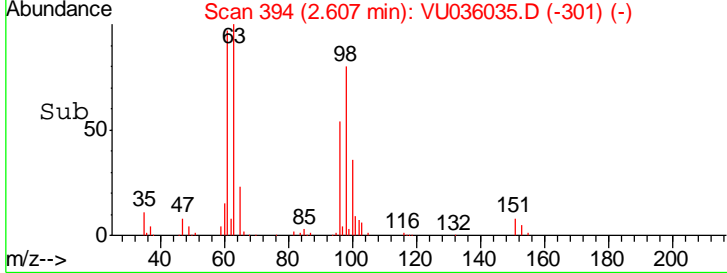
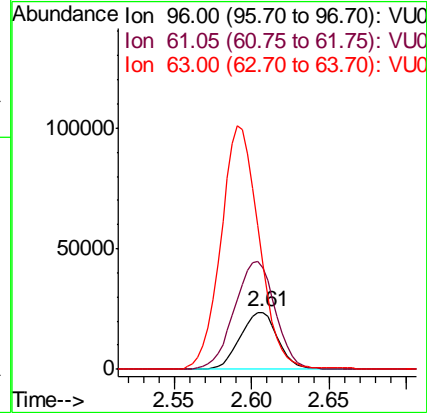
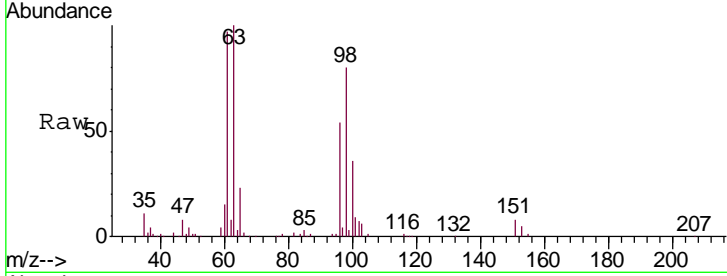




#12
 1,1-Dichloroethene
 Concen: 2.028 ug/L
 RT: 2.61 min Scan# 394
 Delta R.T. 0.00 min
 Lab File: VU036035.D
 Acq: 06 Dec 2019 20:16

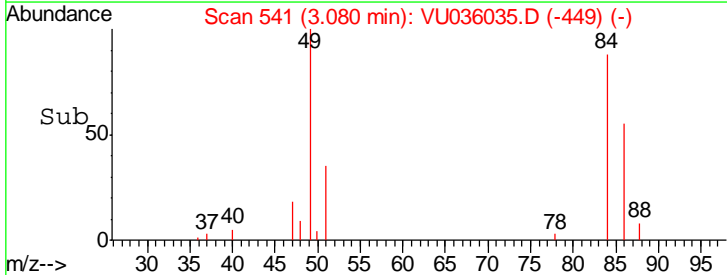
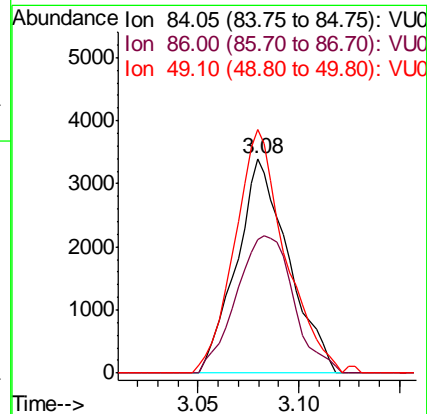
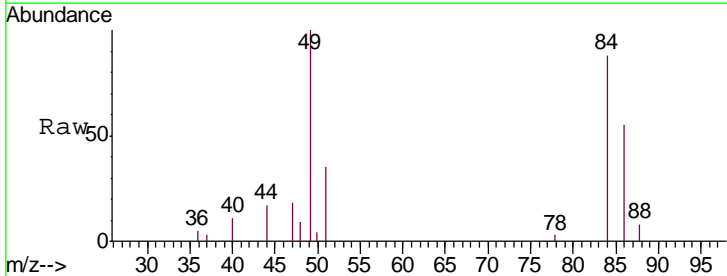
Instrument :
 MSVOA_U
 ClientSampled :
 BFE33DL

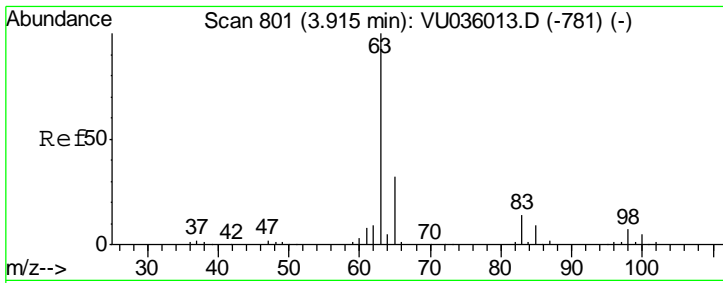
Tgt Ion	Resp	Lower	Upper
96	40419		
61	177.8	127.1	236.1
63	184.1	86.0	159.8#



#16
 Methylene chloride
 Concen: 0.198 ug/L
 RT: 3.08 min Scan# 541
 Delta R.T. -0.00 min
 Lab File: VU036035.D
 Acq: 06 Dec 2019 20:16

Tgt Ion	Resp	Lower	Upper
84	6101		
86	62.0	44.7	82.9
49	113.5	86.2	160.2

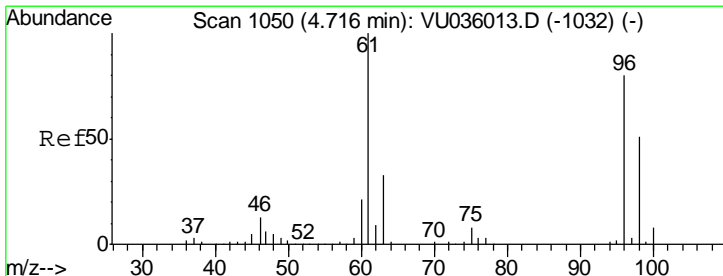
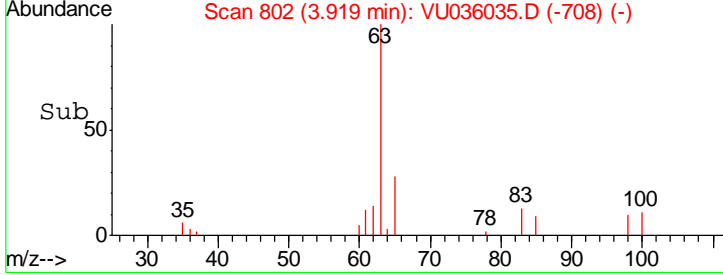
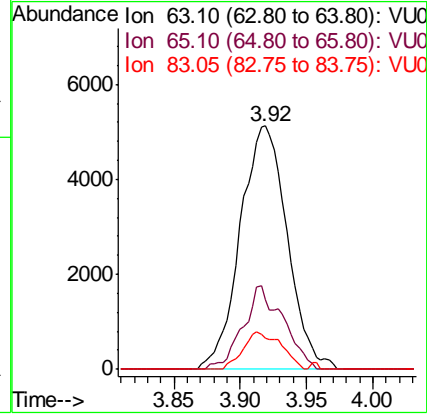
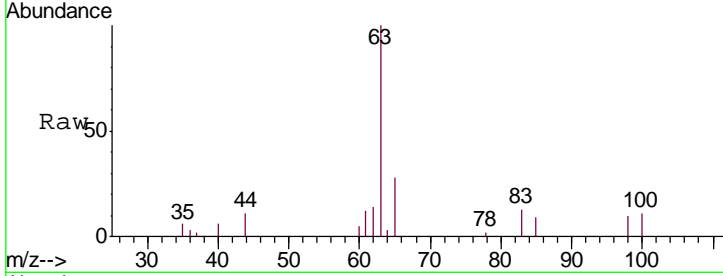




#19
 1,1-Dichloroethane
 Concen: 0.306 ug/L
 RT: 3.92 min Scan# 802
 Delta R.T. 0.00 min
 Lab File: VU036035.D
 Acq: 06 Dec 2019 20:16

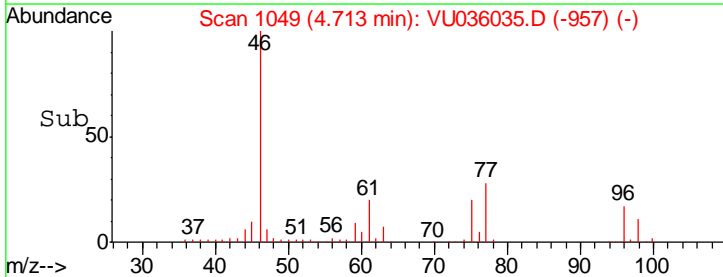
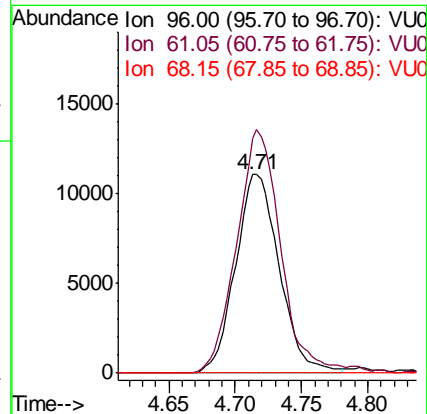
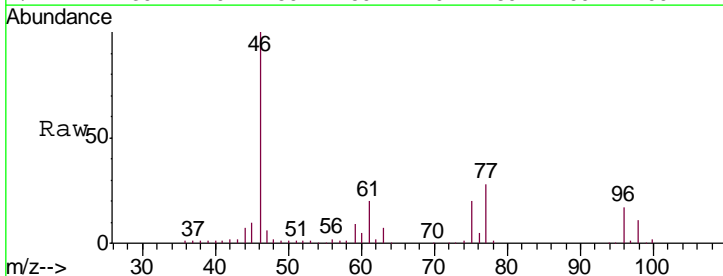
Instrument :
 MSVOA_U
 ClientSampled :
 BFE33DL

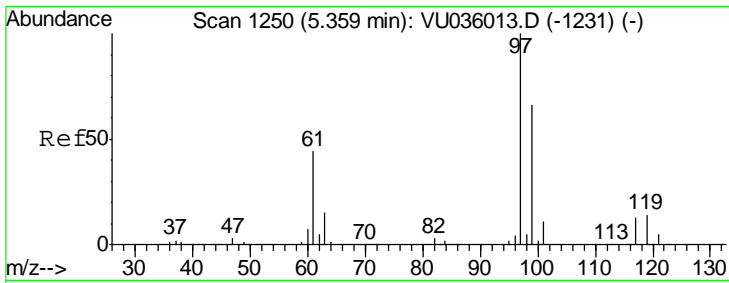
Tgt Ion	Resp	Lower	Upper
63	12609		
65	28.4	22.4	41.6
83	12.9	9.8	18.2



#22
 cis-1,2-Dichloroethene
 Concen: 1.143 ug/L
 RT: 4.71 min Scan# 1049
 Delta R.T. -0.00 min
 Lab File: VU036035.D
 Acq: 06 Dec 2019 20:16

Tgt Ion	Resp	Lower	Upper
96	25478		
61	118.2	95.7	177.7
68	0.0	0.0	0.0

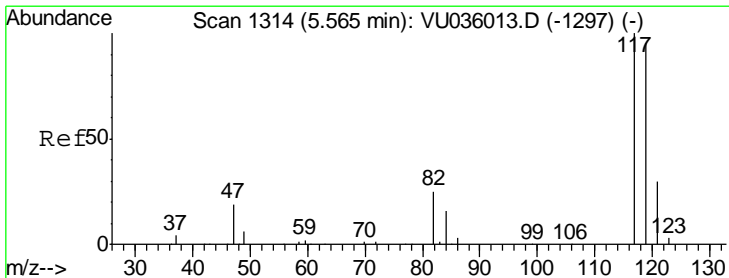
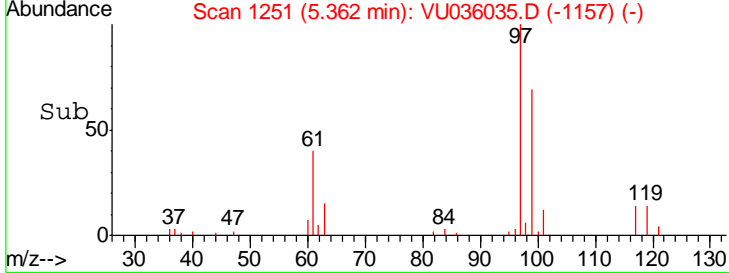
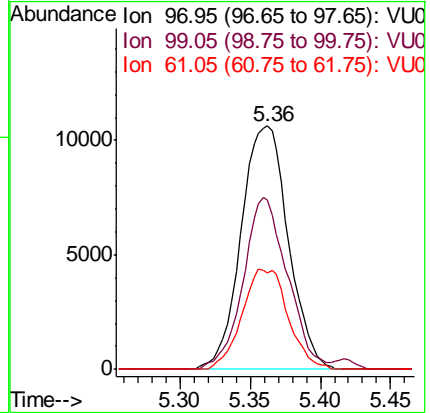
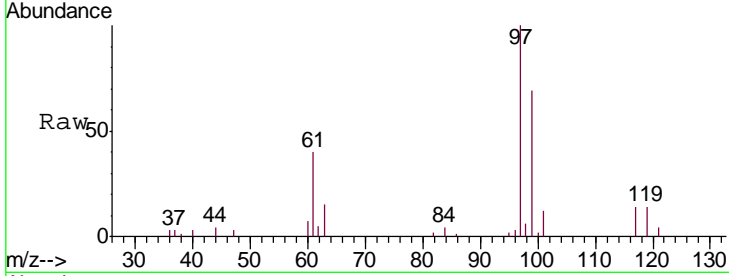




#29
 1,1,1-Trichloroethane
 Concen: 0.699 ug/L
 RT: 5.36 min Scan# 1251
 Delta R.T. 0.00 min
 Lab File: VU036035.D
 Acq: 06 Dec 2019 20:16

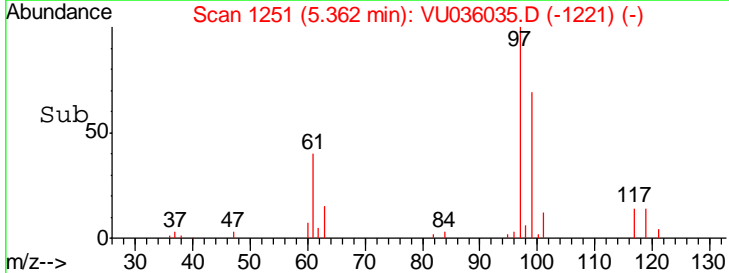
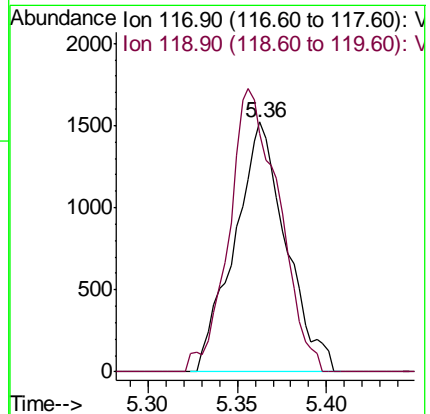
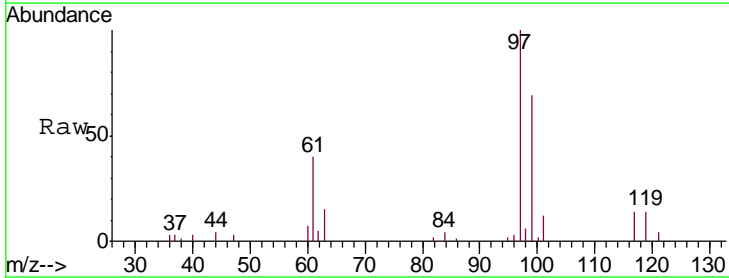
Instrument :
 MSVOA_U
 ClientSampled :
 BFE33DL

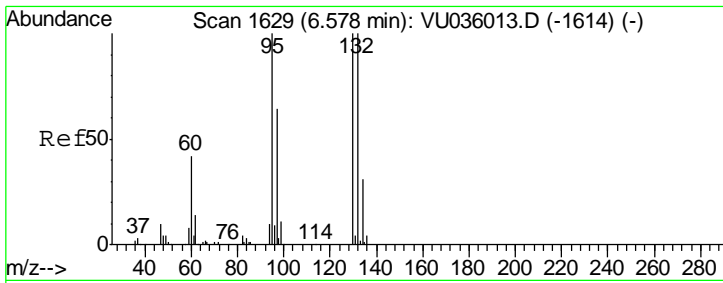
Tgt Ion	Resp	Lower	Upper
97	24864		
99	66.3	51.8	77.8
61	40.2	37.6	56.4



#31
 Carbon tetrachloride
 Concen: 0.097 ug/L
 RT: 5.36 min Scan# 1251
 Delta R.T. -0.20 min
 Lab File: VU036035.D
 Acq: 06 Dec 2019 20:16

Tgt Ion	Resp	Lower	Upper
117	3067		
119	109.9	76.9	115.3

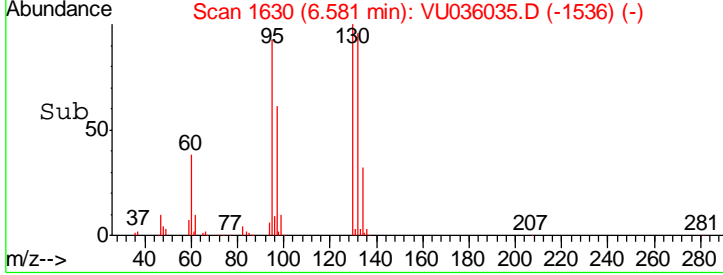
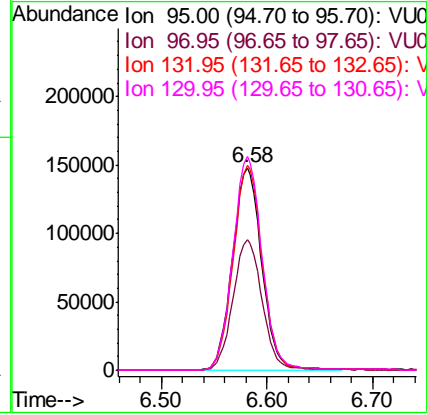
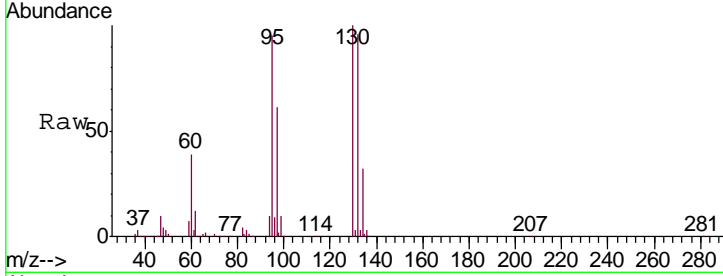




#34
 Trichloroethene
 Concen: 12.165 ug/L
 RT: 6.58 min Scan# 1630
 Delta R.T. 0.00 min
 Lab File: VU036035.D
 Acq: 06 Dec 2019 20:16

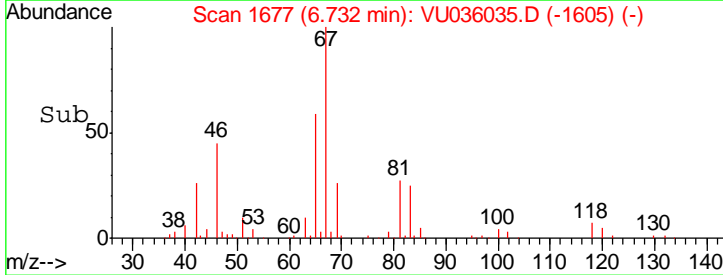
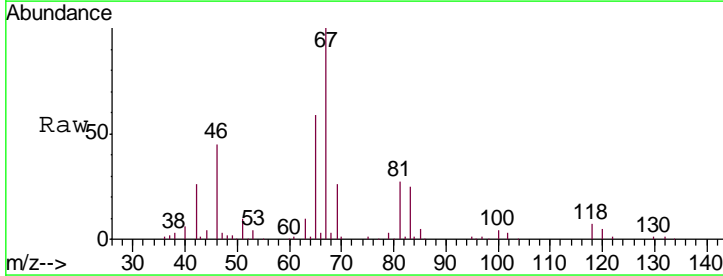
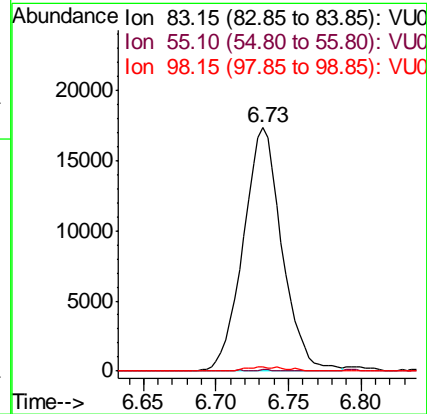
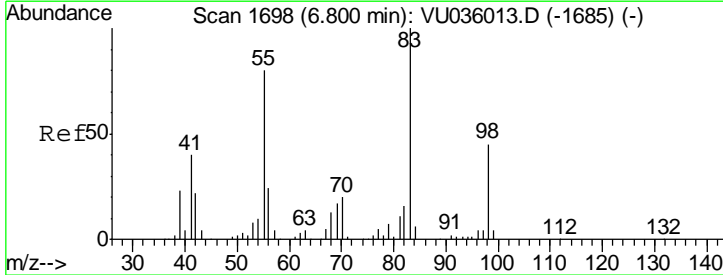
Instrument :
 MSVOA_U
ClientSampled :
 BFE33DL

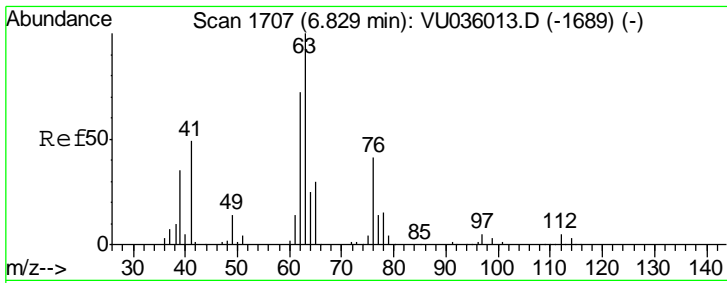
Tgt Ion	Resp	Lower	Upper
95	100		
97	64.2	46.3	85.9
132	101.1	65.7	122.1
130	105.4	69.2	128.6



#35
 Methylcyclohexane
 Concen: 0.919 ug/L
 RT: 6.73 min Scan# 1677
 Delta R.T. -0.07 min
 Lab File: VU036035.D
 Acq: 06 Dec 2019 20:16

Tgt Ion	Resp	Lower	Upper
83	100		
55	0.1	67.4	101.0#
98	1.8	34.6	52.0#

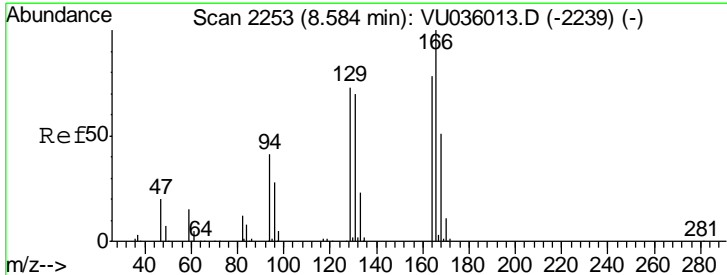
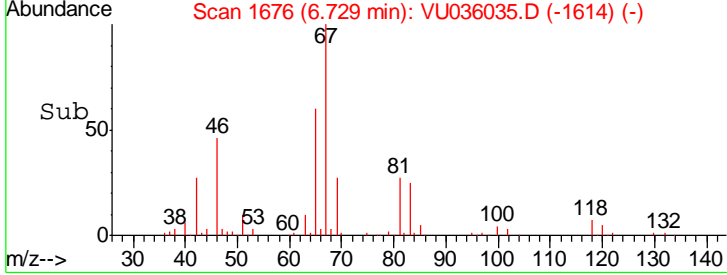
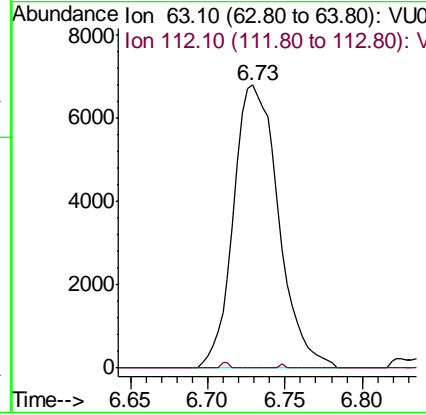
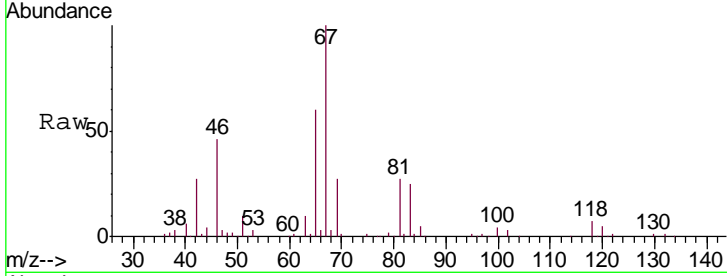




#37
 1,2-Dichloropropane
 Concen: 0.549 ug/L
 RT: 6.73 min Scan# 1676
 Delta R.T. -0.10 min
 Lab File: VU036035.D
 Acq: 06 Dec 2019 20:16

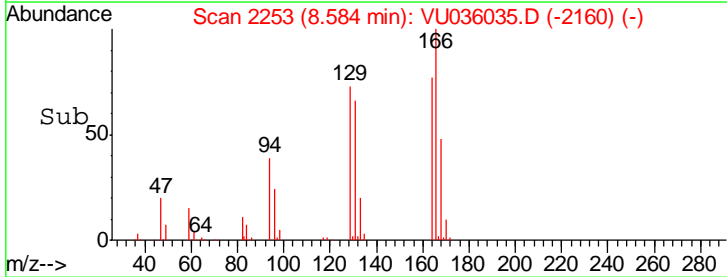
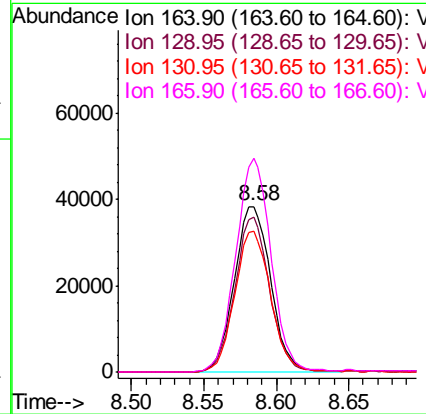
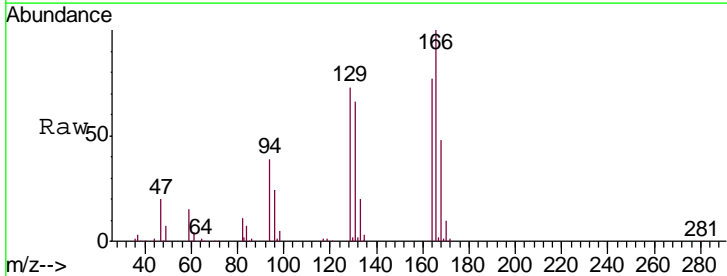
Instrument : MSVOA_U
 ClientSampled : BFE33DL

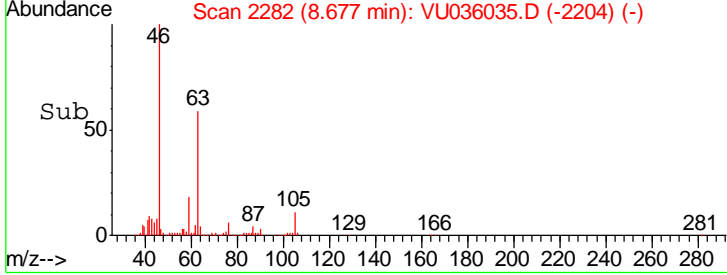
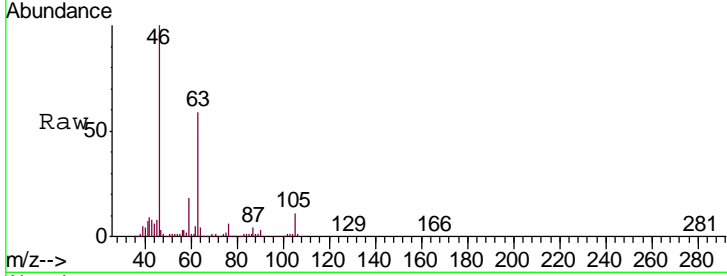
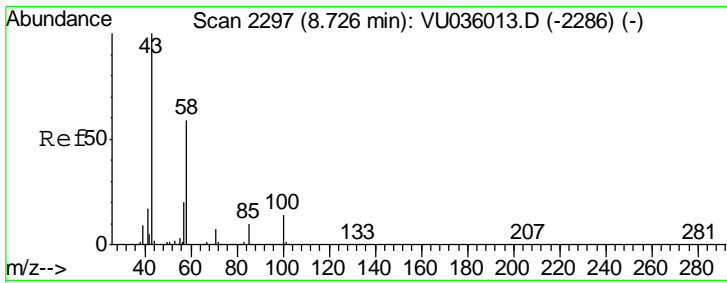
Tgt Ion	Resp	Lower	Upper
63	13757		
112	0.4	3.3	4.9#



#47
 Tetrachloroethene
 Concen: 3.522 ug/L
 RT: 8.58 min Scan# 2253
 Delta R.T. 0.00 min
 Lab File: VU036035.D
 Acq: 06 Dec 2019 20:16

Tgt Ion	Resp	Lower	Upper
164	66946		
164	100		
129	93.9	67.9	126.1
131	84.8	64.1	119.1
166	129.0	92.6	172.0

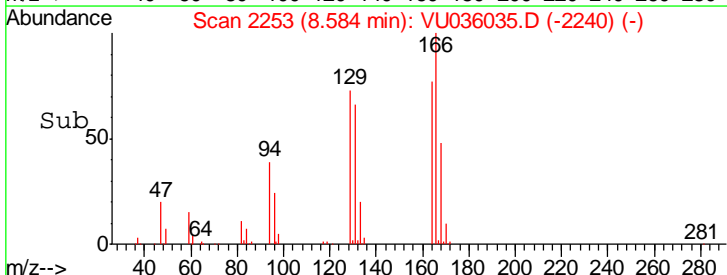
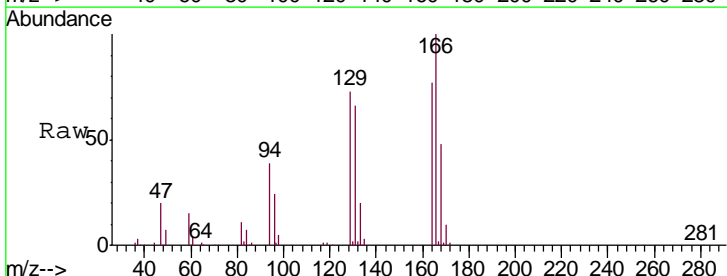
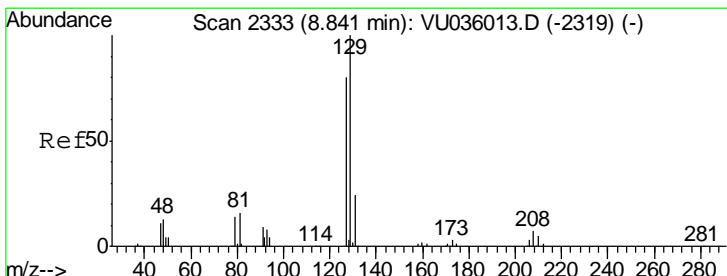
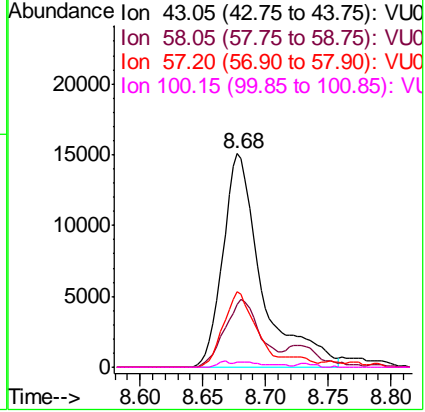




#48
 2-Hexanone
 Concen: 2.988 ug/L
 RT: 8.68 min Scan# 2282
 Delta R.T. -0.05 min
 Lab File: VU036035.D
 Acq: 06 Dec 2019 20:16

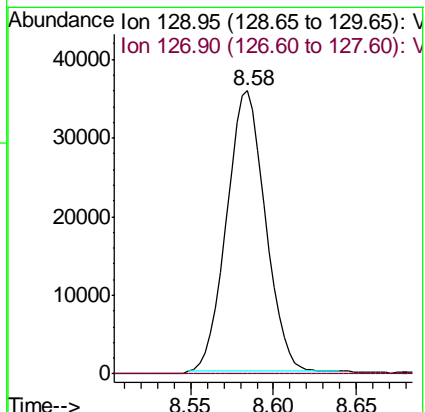
Tgt Ion	Resp	Lower	Upper
43	100		
58	28.9	45.4	68.2#
57	29.6	14.9	22.3#
100	1.0	8.6	13.0#

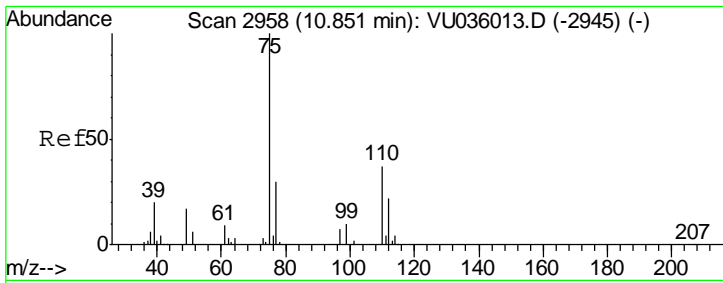
Instrument : MSVOA_U
 ClientSampled : BFE33DL



#49
 Dibromochloromethane
 Concen: 2.788 ug/L
 RT: 8.58 min Scan# 2253
 Delta R.T. -0.26 min
 Lab File: VU036035.D
 Acq: 06 Dec 2019 20:16

Tgt Ion	Resp	Lower	Upper
129	100		
127	0.0	52.8	98.0#





#59
 1,2,3-Trichloropropane
 Concen: 0.623 ug/L
 RT: 11.84 min Scan# 3265
 Delta R.T. 0.99 min
 Lab File: VU036035.D
 Acq: 06 Dec 2019 20:16

Instrument :
 MSVOA_U
 ClientSampled :
 BFE33DL

Tgt Ion	Resp	Lower	Upper
75	10136		
75	100		
77	38.4	26.6	39.8

