

Data Path : Z:\voasrv\HPCHEM1\MSVOA\_U\Data\VU120621\  
 Data File : VU046116.D  
 Acq On : 06 Dec 2021 17:12  
 Operator : SY/MD  
 Sample : M4938-04 10X  
 Misc : 5.0mL/MSVOA\_U/WATER  
 ALS Vial : 16 Sample Multiplier: 1

Instrument :  
 MSVOA\_U  
 ClientSampleId :

Quant Time: Dec 07 01:11:46 2021  
 Quant Method : Z:\voasrv\HPCHEM1\MSVOA\_U\Method\SFAMULM112921WMA.M  
 Quant Title : VOC Analysis  
 QLast Update : Fri Dec 03 05:08:36 2021  
 Response via : Initial Calibration

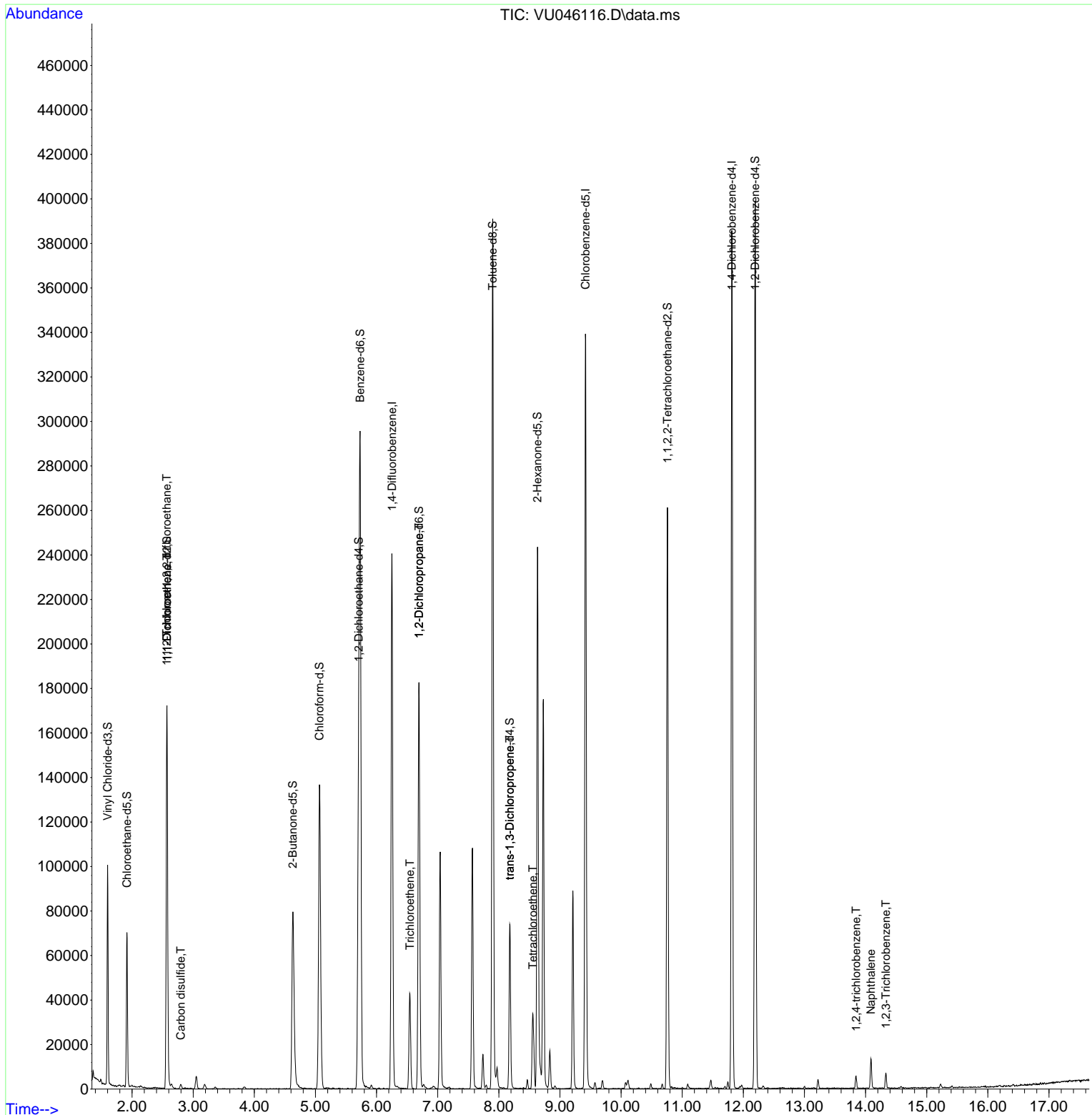
Compound	R.T.	QIon	Response	Conc	Units	Dev(Min)
Internal Standards						
1) 1,4-Difluorobenzene	6.253	114	201077	50.000	ug/L	0.00
28) Chlorobenzene-d5	9.417	117	197528	50.000	ug/L	0.00
58) 1,4-Dichlorobenzene-d4	11.812	152	103095	50.000	ug/L	0.00
System Monitoring Compounds						
4) Vinyl Chloride-d3	1.600	65	66935	40.411	ug/L	0.00
Spiked Amount	50.000	Range 60 - 135	Recovery =	80.820%		
7) Chloroethane-d5	1.916	69	50277	39.534	ug/L	0.00
Spiked Amount	50.000	Range 70 - 130	Recovery =	79.060%		
11) 1,1-Dichloroethene-d2	2.571	63	100202	33.699	ug/L	0.00
Spiked Amount	50.000	Range 60 - 125	Recovery =	67.400%		
21) 2-Butanone-d5	4.629	46	119375	90.660	ug/L	-0.01
Spiked Amount	100.000	Range 40 - 130	Recovery =	90.660%		
24) Chloroform-d	5.067	84	127078	45.942	ug/L	0.00
Spiked Amount	50.000	Range 70 - 125	Recovery =	91.880%		
26) 1,2-Dichloroethane-d4	5.706	65	88236	47.532	ug/L	0.00
Spiked Amount	50.000	Range 70 - 125	Recovery =	95.060%		
32) Benzene-d6	5.732	84	285760	50.474	ug/L	0.00
Spiked Amount	50.000	Range 70 - 125	Recovery =	100.940%		
36) 1,2-Dichloropropane-d6	6.694	67	88918	50.677	ug/L	0.00
Spiked Amount	50.000	Range 70 - 120	Recovery =	101.360%		
41) Toluene-d8	7.899	98	260643	50.563	ug/L	0.00
Spiked Amount	50.000	Range 80 - 120	Recovery =	101.120%		
43) trans-1,3-Dichloroprop...	8.179	79	42144	49.757	ug/L	0.00
Spiked Amount	50.000	Range 60 - 125	Recovery =	99.520%		
47) 2-Hexanone-d5	8.632	63	88816	106.760	ug/L	0.00
Spiked Amount	100.000	Range 45 - 130	Recovery =	106.760%		
56) 1,1,2,2-Tetrachloroeth...	10.758	84	127743	48.007	ug/L	0.00
Spiked Amount	50.000	Range 65 - 120	Recovery =	96.020%		
66) 1,2-Dichlorobenzene-d4	12.195	152	105956	53.367	ug/L	0.00
Spiked Amount	50.000	Range 80 - 120	Recovery =	106.740%		
Target Compounds						
10) 1,1,2-Trichloro-1,2,2-...	2.568	101	977	0.668	ug/L #	21
12) 1,1-Dichloroethene	2.571	96	972	0.699	ug/L #	1
14) Carbon disulfide	2.797	76	2511	0.582	ug/L	100
34) Trichloroethene	6.546	95	14145	8.981	ug/L	97
37) 1,2-Dichloropropane	6.694	63	9824	6.273	ug/L #	86
44) trans-1,3-Dichloropropene	8.179	75	1677	0.717	ug/L #	78
46) Tetrachloroethene	8.555	164	7351	6.351	ug/L	94
70) 1,2,4-trichlorobenzene	13.844	180	2154	1.046	ug/L	94
71) Naphthalene	14.089	128	11431	1.594	ug/L	99
72) 1,2,3-Trichlorobenzene	14.333	180	2531	1.205	ug/L	97

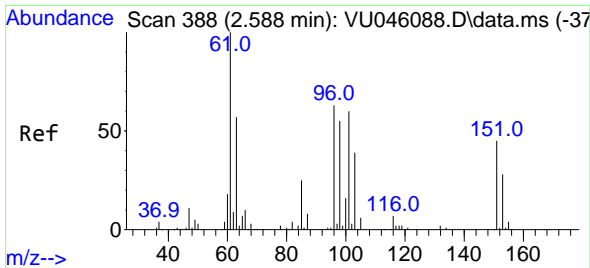
(#) = qualifier out of range (m) = manual integration (+) = signals summed

Data Path : Z:\voasrv\HPCHEM1\MSVOA\_U\Data\VU120621\  
 Data File : VU046116.D  
 Acq On : 06 Dec 2021 17:12  
 Operator : SY/MD  
 Sample : M4938-04 10X  
 Misc : 5.0mL/MSVOA\_U/WATER  
 ALS Vial : 16 Sample Multiplier: 1

Instrument :  
 MSVOA\_U  
 ClientSampleId :

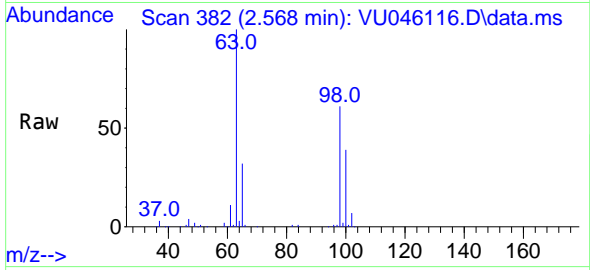
Quant Time: Dec 07 01:11:46 2021  
 Quant Method : Z:\voasrv\HPCHEM1\MSVOA\_U\Method\SFAMULM112921WMA.M  
 Quant Title : VOC Analysis  
 QLast Update : Fri Dec 03 05:08:36 2021  
 Response via : Initial Calibration



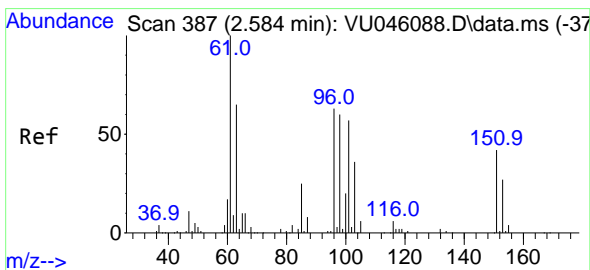
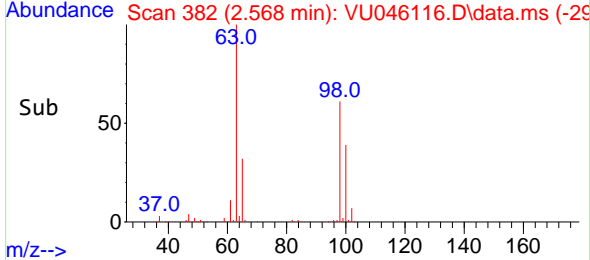
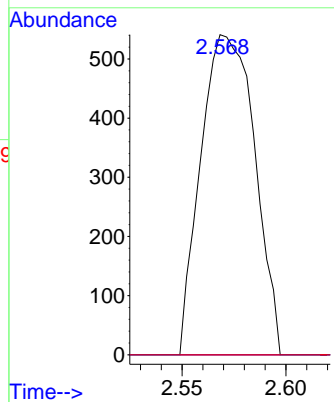


#10  
 1,1,2-Trichloro-1,2,2-trifluoroethane  
 Concen: 0.668 ug/L  
 RT: 2.568 min Scan# 382  
 Delta R.T. -0.019 min  
 Lab File: VU046116.D  
 Acq: 06 Dec 2021 17:12

Instrument : MSVOA\_U  
 ClientSampleId :

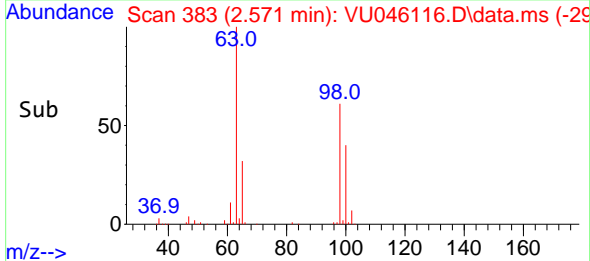
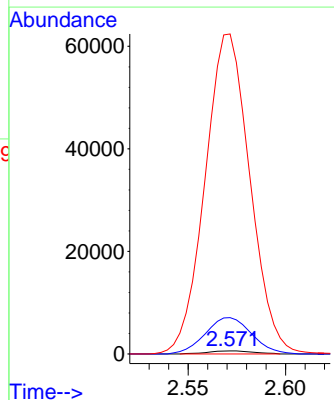
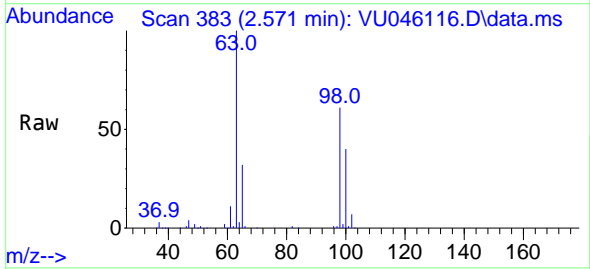


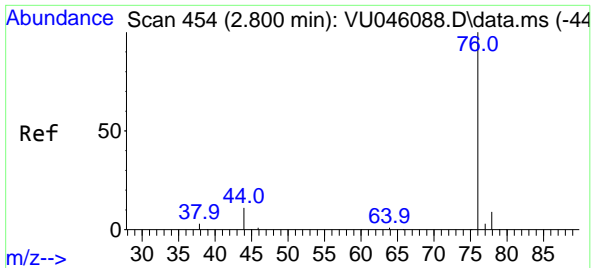
Tgt Ion: 101 Resp: 977  
 Ion Ratio Lower Upper  
 101 100  
 85 0.0 35.1 52.7#  
 151 0.0 56.7 85.1#



#12  
 1,1-Dichloroethene  
 Concen: 0.699 ug/L  
 RT: 2.571 min Scan# 383  
 Delta R.T. -0.013 min  
 Lab File: VU046116.D  
 Acq: 06 Dec 2021 17:12

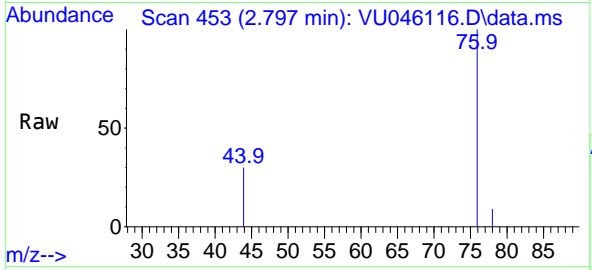
Tgt Ion: 96 Resp: 972  
 Ion Ratio Lower Upper  
 96 100  
 61 1198.0 118.6 220.2#  
 63 10561.1 93.0 172.8#



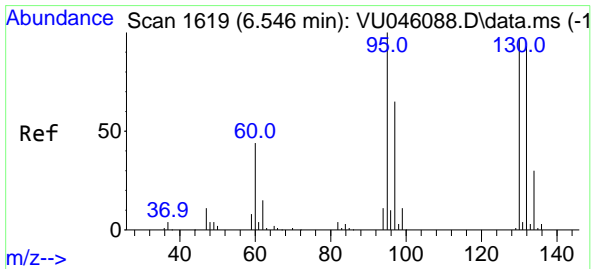
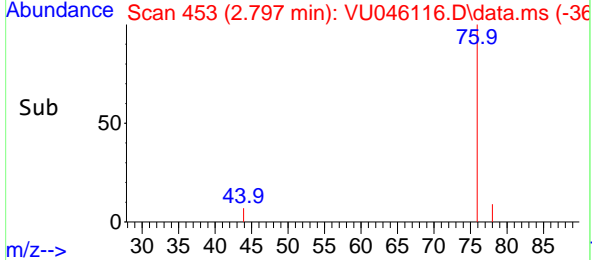
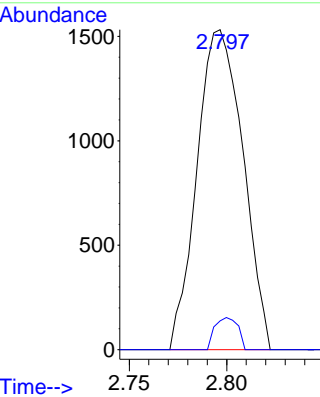


#14  
 Carbon disulfide  
 Concen: 0.582 ug/L  
 RT: 2.797 min Scan# 411  
 Delta R.T. -0.003 min  
 Lab File: VU046116.D  
 Acq: 06 Dec 2021 17:12

Instrument : MSVOA\_U  
 ClientSampleId :

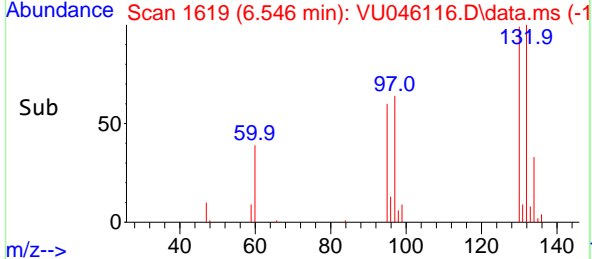
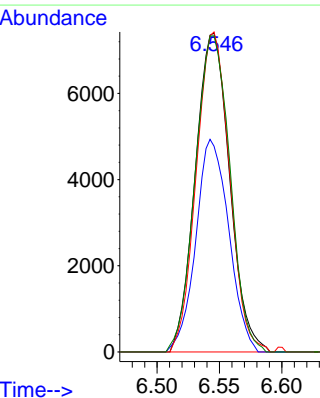
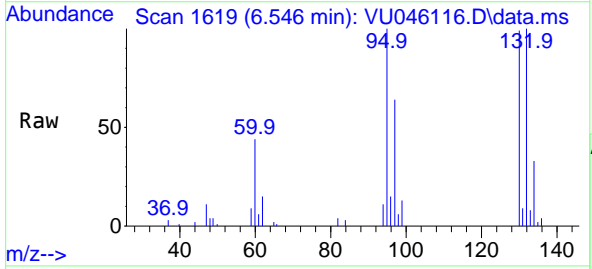


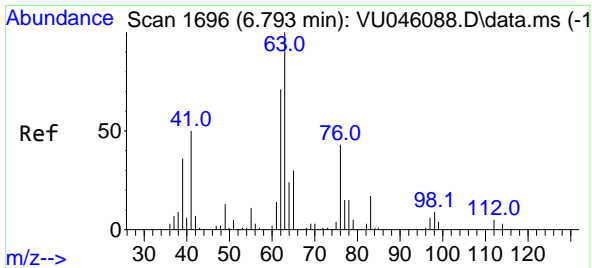
Tgt Ion: 76 Resp: 2511  
 Ion Ratio Lower Upper  
 76 100  
 78 9.0 7.3 10.9



#34  
 Trichloroethene  
 Concen: 8.981 ug/L  
 RT: 6.546 min Scan# 1619  
 Delta R.T. -0.000 min  
 Lab File: VU046116.D  
 Acq: 06 Dec 2021 17:12

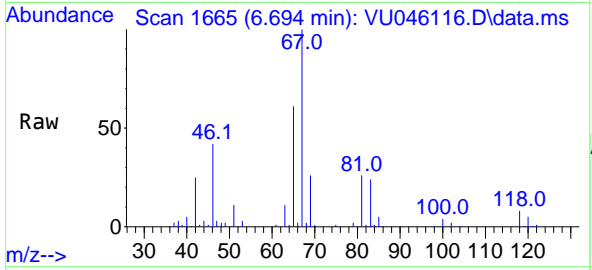
Tgt Ion: 95 Resp: 14145  
 Ion Ratio Lower Upper  
 95 100  
 97 64.6 44.1 81.9  
 132 100.4 66.8 124.0  
 130 99.2 69.0 128.1



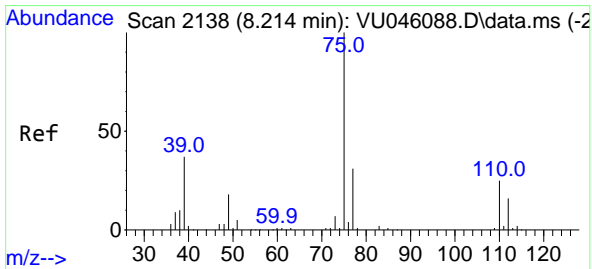
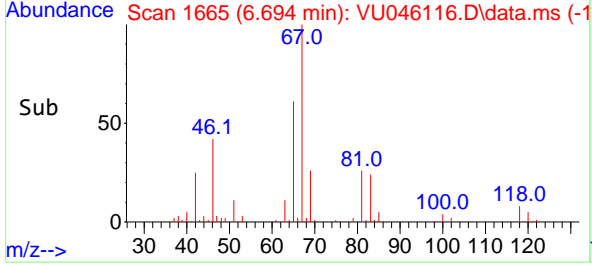
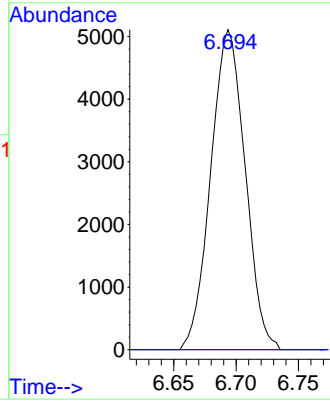


#37  
 1,2-Dichloropropane  
 Concen: 6.273 ug/L  
 RT: 6.694 min Scan# 1  
 Delta R.T. -0.100 min  
 Lab File: VU046116.D  
 Acq: 06 Dec 2021 17:12

Instrument :  
 MSVOA\_U  
 ClientSampleId :

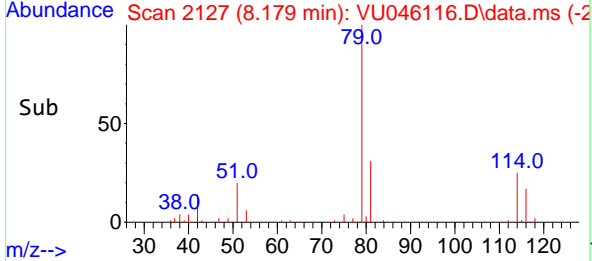
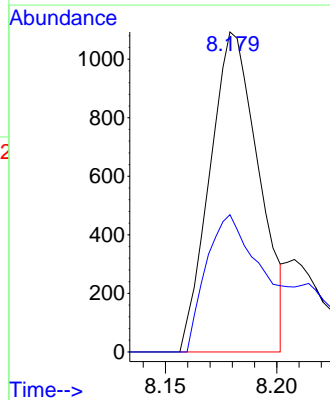
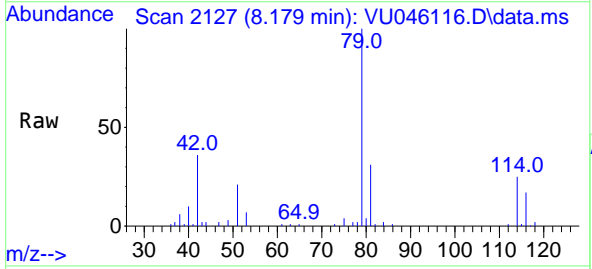


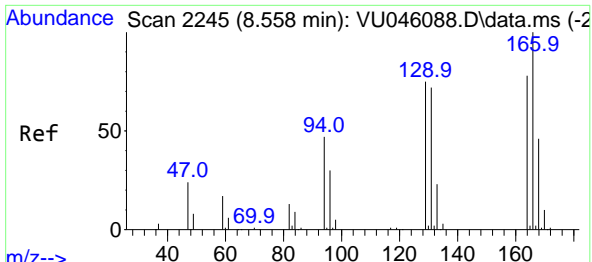
Tgt Ion: 63 Resp: 9824  
 Ion Ratio Lower Upper  
 63 100  
 112 0.0 3.8 5.6#



#44  
 trans-1,3-Dichloropropene  
 Concen: 0.717 ug/L  
 RT: 8.179 min Scan# 2127  
 Delta R.T. -0.035 min  
 Lab File: VU046116.D  
 Acq: 06 Dec 2021 17:12

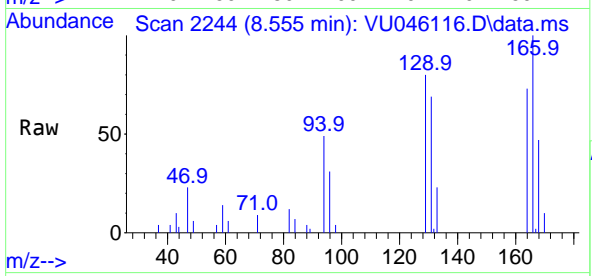
Tgt Ion: 75 Resp: 1677  
 Ion Ratio Lower Upper  
 75 100  
 77 42.9 21.7 40.3#



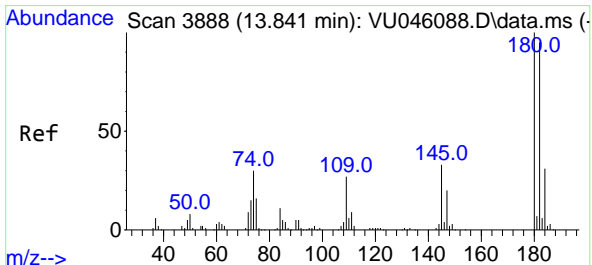
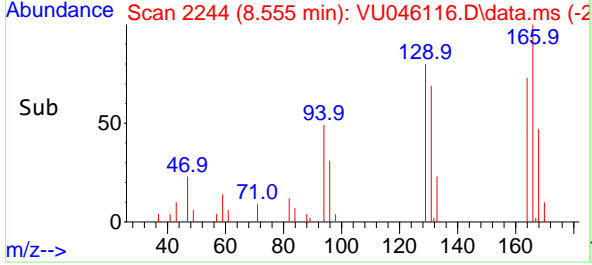
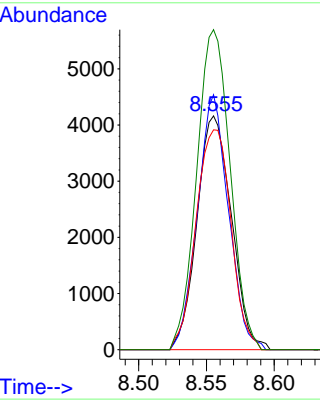


#46  
 Tetrachloroethene  
 Concen: 6.351 ug/L  
 RT: 8.555 min Scan# 211  
 Delta R.T. -0.000 min  
 Lab File: VU046116.D  
 Acq: 06 Dec 2021 17:12

Instrument : MSVOA\_U  
 ClientSampleId :

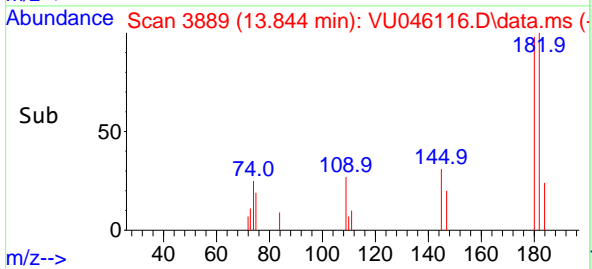
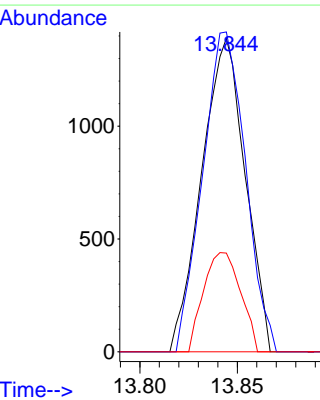
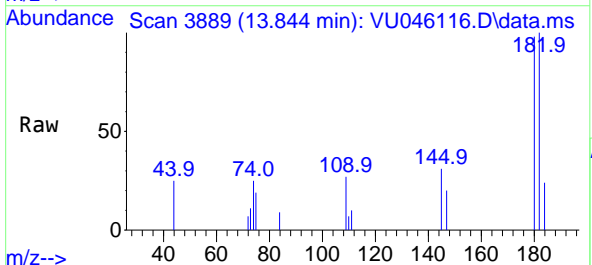


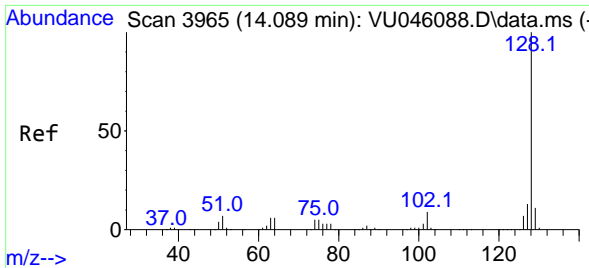
Tgt Ion:164 Resp: 7351  
 Ion Ratio Lower Upper  
 164 100  
 129 109.1 71.1 132.1  
 131 94.1 67.8 126.0  
 166 136.9 90.6 168.2



#70  
 1,2,4-trichlorobenzene  
 Concen: 1.046 ug/L  
 RT: 13.844 min Scan# 3889  
 Delta R.T. 0.003 min  
 Lab File: VU046116.D  
 Acq: 06 Dec 2021 17:12

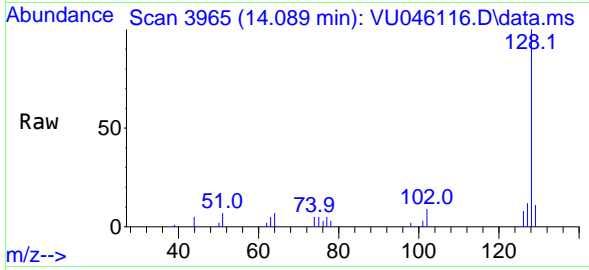
Tgt Ion:180 Resp: 2154  
 Ion Ratio Lower Upper  
 180 100  
 182 100.6 76.7 115.1  
 145 26.9 26.0 39.0



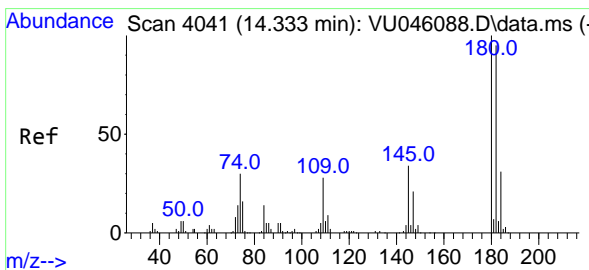
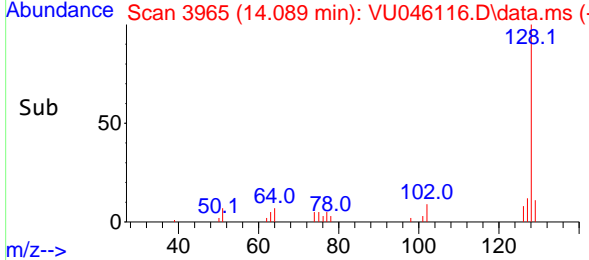
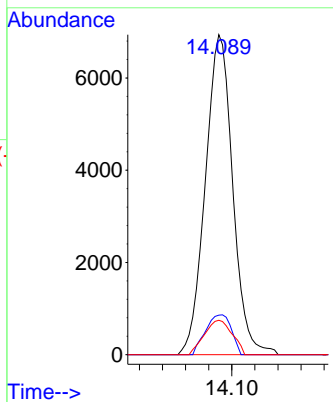


#71  
 Naphthalene  
 Concen: 1.594 ug/L  
 RT: 14.089 min Scan# 3965  
 Delta R.T. -0.000 min  
 Lab File: VU046116.D  
 Acq: 06 Dec 2021 17:12

Instrument : MSVOA\_U  
 ClientSampleId :



Tgt Ion:128 Resp: 11431  
 Ion Ratio Lower Upper  
 128 100  
 127 11.7 10.1 15.1  
 129 10.9 8.6 13.0



#72  
 1,2,3-Trichlorobenzene  
 Concen: 1.205 ug/L  
 RT: 14.333 min Scan# 4041  
 Delta R.T. 0.003 min  
 Lab File: VU046116.D  
 Acq: 06 Dec 2021 17:12

Tgt Ion:180 Resp: 2531  
 Ion Ratio Lower Upper  
 180 100  
 182 91.8 76.0 114.0  
 145 32.4 27.3 40.9

