

Data Path : Z:\voasrv\HPCHEM1\MSVOA\_U\Data\VU120622\  
 Data File : VU052185.D  
 Acq On : 06 Dec 2022 11:46  
 Operator : JC/MD  
 Sample : VU1206WBL02  
 Misc : 25.0mL/MSVOA\_U/WATER  
 ALS Vial : 5 Sample Multiplier: 1

Instrument :  
 MSVOA\_U  
 ClientSampleId :  
 VBLK146

Integration Parameters: rteint.p

Integrator: RTE  
 Smoothing : ON Filtering: 5  
 Sampling : 1 Min Area: 3 % of largest Peak  
 Start Thrs: 0.1 Max Peaks: 100  
 Stop Thrs : 0 Peak Location: TOP

If leading or trailing edge < 100 prefer < Baseline drop else tangent >  
 Peak separation: 5

Method : Z:\voasrv\HPCHEM1\MSVOA\_U\Method\SFAMUTR111822WMA.M  
 Title : TRACE VOA SFAM1.0

Signal : TIC: VU052185.D\data.ms

peak #	R.T. min	first scan	max scan	last scan	PK TY	peak height	corr. area	corr. % max.	% of total
1	1.392	13	16	30	rVB3	6051	8835	1.02%	0.133%
2	1.597	72	80	103	rVB	137891	169032	19.43%	2.544%
3	1.912	170	178	199	rBV	104032	149001	17.13%	2.242%
4	2.565	369	381	401	rBV	222421	355959	40.91%	5.357%
5	3.044	518	530	547	rBV3	9188	18535	2.13%	0.279%
6	4.649	1011	1029	1082	rBV2	75266	325083	37.36%	4.892%
7	5.063	1141	1158	1181	rBV2	170090	377475	43.39%	5.680%
8	5.726	1344	1364	1402	rBV2	334238	870047	100.00%	13.093%
9	6.250	1511	1527	1560	rBV	244138	480006	55.17%	7.223%
10	6.690	1648	1664	1690	rBV	206407	409747	47.09%	6.166%
11	7.565	1923	1936	1954	rBV2	88887	159743	18.36%	2.404%
12	7.896	2026	2039	2062	rBV	361971	637728	73.30%	9.597%
13	8.179	2117	2127	2144	rBV2	53834	94462	10.86%	1.422%
14	8.636	2257	2269	2293	rBV2	360055	745172	85.65%	11.214%
15	9.417	2497	2512	2543	rBV	363178	617973	71.03%	9.300%
16	10.755	2916	2928	2949	rBV	165018	267883	30.79%	4.031%
17	11.809	3244	3256	3278	rBV	274546	458132	52.66%	6.894%
18	12.192	3362	3375	3397	rBV	302021	500398	57.51%	7.530%

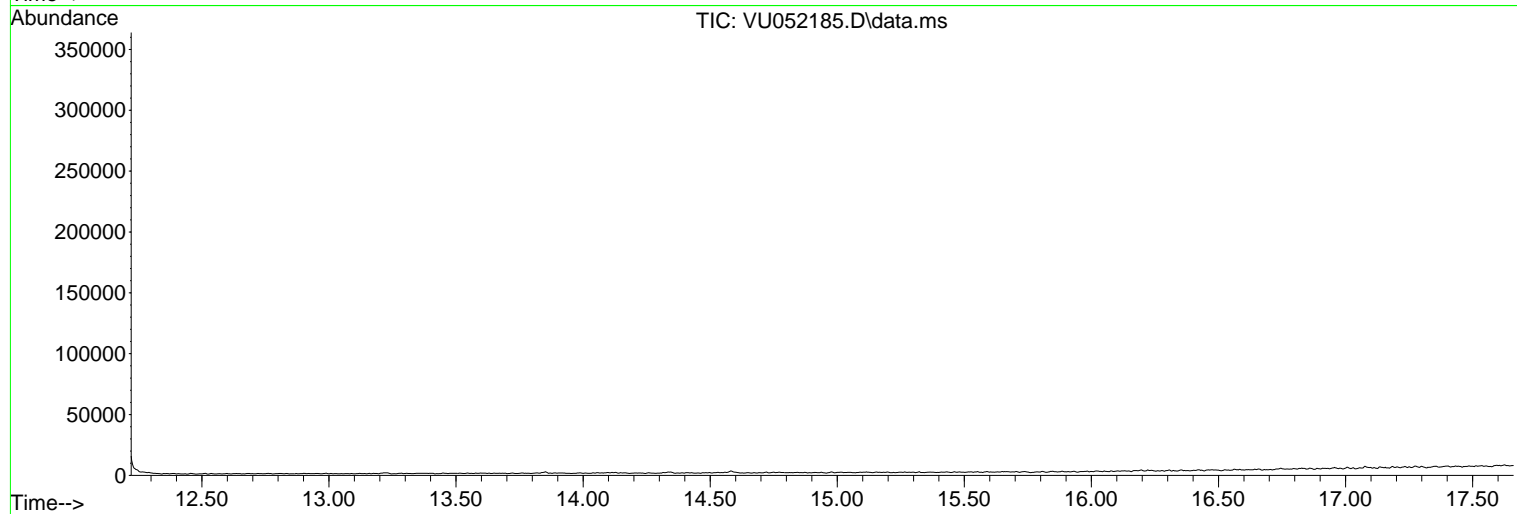
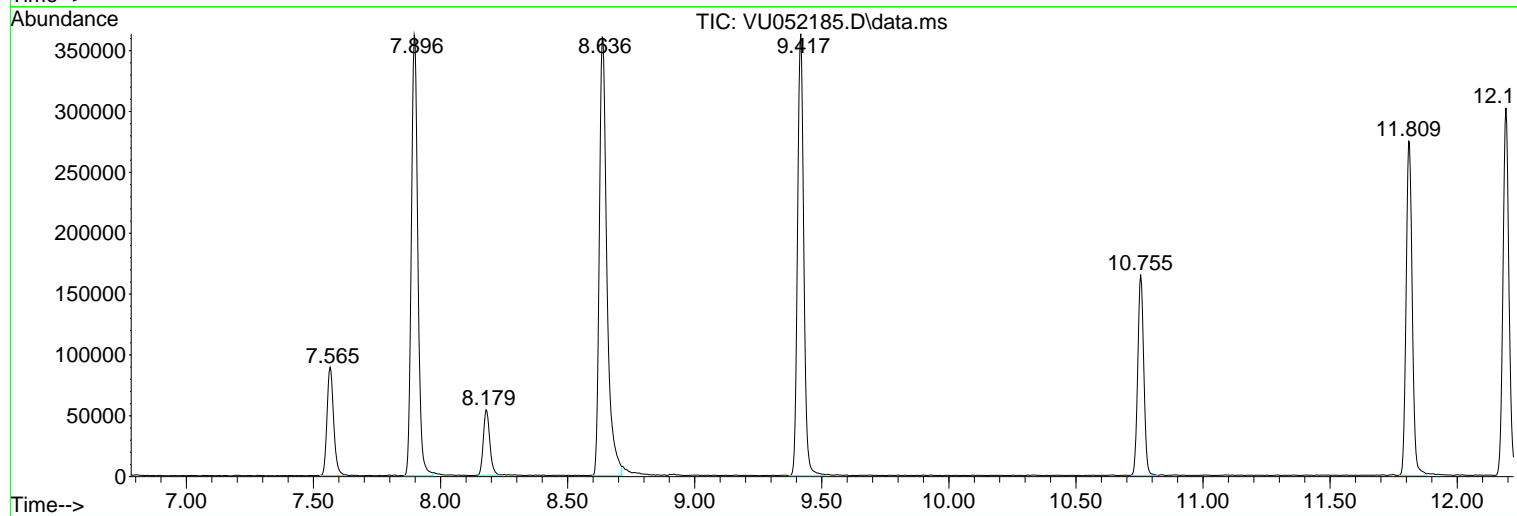
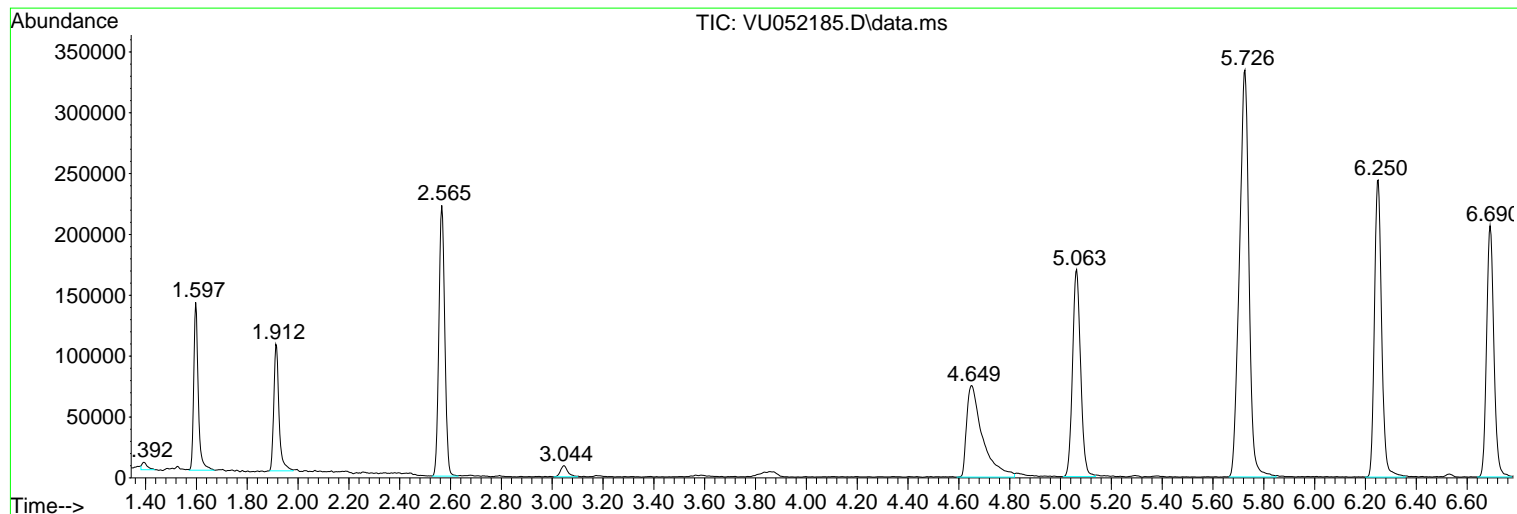
Sum of corrected areas: 6645211

Data Path : Z:\voasrv\HPCHEM1\MSVOA\_U\Data\VU120622\  
Data File : VU052185.D  
Acq On : 06 Dec 2022 11:46  
Operator : JC/MD  
Sample : VU1206WBL02  
Misc : 25.0mL/MSVOA\_U/WATER  
ALS Vial : 5 Sample Multiplier: 1

Instrument :  
MSVOA\_U  
ClientSampleId :  
VBLK146

Quant Method : Z:\voasrv\HPCHEM1\MSVOA\_U\Method\SFAMUTR111822WMA.M  
Quant Title : TRACE VOA SFAM1.0

TIC Library : C:\Database\NIST20.L  
TIC Integration Parameters: LSCINT.P



Library Search Compound Report

Data Path : Z:\voasrv\HPCHEM1\MSVOA\_U\Data\VU120622\  
Data File : VU052185.D  
Acq On : 06 Dec 2022 11:46  
Operator : JC/MD  
Sample : VU1206WBL02  
Misc : 25.0mL/MSVOA\_U/WATER  
ALS Vial : 5 Sample Multiplier: 1

Instrument :  
MSVOA\_U  
ClientSampleId :  
VBLK146

Quant Method : Z:\voasrv\HPCHEM1\MSVOA\_U\Method\SFAMUTR111822WMA.M  
Quant Title : TRACE VOA SFAM1.0

TIC Library : C:\Database\NIST20.L  
TIC Integration Parameters: LSCINT.P

No Library Search Compounds Detected

\*\*\*\*\*

Data Path : Z:\voasrv\HPCHEM1\MSVOA\_U\Data\VU120622\  
Data File : VU052185.D  
Acq On : 06 Dec 2022 11:46  
Operator : JC/MD  
Sample : VU1206WBL02  
Misc : 25.0mL/MSVOA\_U/WATER  
ALS Vial : 5 Sample Multiplier: 1

Instrument :  
MSVOA\_U  
ClientSampleId :  
VBLK146

Quant Method : Z:\voasrv\HPCHEM1\MSVOA\_U\Method\SFAMUTR111822WMA.M  
Quant Title : TRACE VOA SFAM1.0

TIC Library : C:\Database\NIST0.L  
TIC Integration Parameters: LSCINT.P

TIC Top Hit name	RT	EstConc	Units	Response	--Internal Standard--			
					#	RT	Resp	Conc

---