

Data Path : Z:\voasrv\HPCHEM1\MSVOA\_U\Data\VU120623\  
 Data File : VU056656.D  
 Acq On : 06 Dec 2023 10:07  
 Operator : MD/SY  
 Sample : VSTDCCC005  
 Misc : 25mL/MSVOA\_U/WATER  
 ALS Vial : 2 Sample Multiplier: 1

Instrument :  
 MSVOA\_U  
 ClientSampleId :

Quant Time: Dec 07 04:49:07 2023  
 Quant Method : Z:\voasrv\HPCHEM1\MSVOA\_U\Method\SFAMUTR111323WMA.M  
 Quant Title : TRACE VOA SFAM1.0  
 QLast Update : Wed Dec 06 01:41:03 2023  
 Response via : Initial Calibration

Compound	R.T.	QIon	Response	Conc	Units	Dev(Min)
Internal Standards						
1) 1,4-Difluorobenzene	6.245	114	240406	5.000	ug/L	0.00
28) Chlorobenzene-d5	9.415	117	243958	5.000	ug/L	0.00
58) 1,4-Dichlorobenzene-d4	11.807	152	123327	5.000	ug/L	0.00
System Monitoring Compounds						
4) Vinyl Chloride-d3	1.595	65	72097	4.009	ug/L	0.00
Spiked Amount	5.000	Range 40 - 130	Recovery	=	80.200%	
7) Chloroethane-d5	1.911	69	57722	4.187	ug/L	0.00
Spiked Amount	5.000	Range 65 - 130	Recovery	=	83.800%	
11) 1,1-Dichloroethene-d2	2.563	65	34054	4.291	ug/L	0.00
Spiked Amount	5.000	Range 60 - 125	Recovery	=	85.800%	
20) 2-Butanone-d5	4.624	46	220317	61.446	ug/L	0.00
Spiked Amount	50.000	Range 40 - 130	Recovery	=	122.900%	
24) Chloroform-d	5.055	84	175398	5.043	ug/L	0.00
Spiked Amount	5.000	Range 70 - 125	Recovery	=	100.800%	
26) 1,2-Dichloroethane-d4	5.698	65	82723	5.147	ug/L	0.00
Spiked Amount	5.000	Range 70 - 130	Recovery	=	103.000%	
32) Benzene-d6	5.721	84	315210	4.337	ug/L	0.00
Spiked Amount	5.000	Range 70 - 125	Recovery	=	86.800%	
36) 1,2-Dichloropropane-d6	6.685	67	101484	4.633	ug/L	0.00
Spiked Amount	5.000	Range 60 - 140	Recovery	=	92.600%	
41) Toluene-d8	7.894	98	277535	4.324	ug/L	0.00
Spiked Amount	5.000	Range 70 - 130	Recovery	=	86.400%	
43) trans-1,3-Dichloroprop...	8.174	79	38209	4.548	ug/L	0.00
Spiked Amount	5.000	Range 55 - 130	Recovery	=	91.000%	
46) 2-Hexanone-d5	8.631	63	178833	54.165	ug/L	0.00
Spiked Amount	50.000	Range 45 - 130	Recovery	=	108.320%	
56) 1,1,2,2-Tetrachloroeth...	10.749	84	81697	5.219	ug/L	0.00
Spiked Amount	5.000	Range 65 - 120	Recovery	=	104.400%	
66) 1,2-Dichlorobenzene-d4	12.190	152	99755	4.378	ug/L	0.00
Spiked Amount	5.000	Range 80 - 120	Recovery	=	87.600%	
Target Compounds						
2) Dichlorodifluoromethane	1.383	85	75616	3.970	ug/L	99
3) Chloromethane	1.518	50	77008	3.956	ug/L	97
5) Vinyl chloride	1.602	62	82901	4.420	ug/L	97
6) Bromomethane	1.856	94	46031	4.849	ug/L	98
8) Chloroethane	1.930	64	50037	4.368	ug/L	97
9) Trichlorofluoromethane	2.136	101	138984	5.143	ug/L	100
10) 1,1,2-Trichloro-1,2,2-...	2.576	101	89748	5.593	ug/L	98
12) 1,1-Dichloroethene	2.576	96	73573	4.999	ug/L	94
13) Acetone	2.634	43	147486	48.295	ug/L	98
14) Carbon disulfide	2.792	76	167547	3.499	ug/L	99
15) Methyl Acetate	2.949	43	30705	5.650	ug/L	99
16) Methylene chloride	3.042	84	91571	4.702	ug/L	96
17) Methyl tert-butyl Ether	3.354	73	203164	5.682	ug/L	100
18) trans-1,2-Dichloroethene	3.348	96	76648	5.062	ug/L	98
19) 1,1-Dichloroethane	3.862	63	170212	5.675	ug/L	98
21) 2-Butanone	4.701	43	209064	52.759	ug/L	99
22) cis-1,2-Dichloroethene	4.663	96	93334	5.435	ug/L	97
23) Bromochloromethane	4.968	128	40823	5.776	ug/L	99
25) Chloroform	5.081	83	182292	5.610	ug/L	97

Data Path : Z:\voasrv\HPCHEM1\MSVOA\_U\Data\VU120623\  
 Data File : VU056656.D  
 Acq On : 06 Dec 2023 10:07  
 Operator : MD/SY  
 Sample : VSTDCCC005  
 Misc : 25mL/MSVOA\_U/WATER  
 ALS Vial : 2 Sample Multiplier: 1

Instrument :  
 MSVOA\_U  
 ClientSampleId :

Quant Time: Dec 07 04:49:07 2023  
 Quant Method : Z:\voasrv\HPCHEM1\MSVOA\_U\Method\SFAMUTR111323WMA.M  
 Quant Title : TRACE VOA SFAM1.0  
 QLast Update : Wed Dec 06 01:41:03 2023  
 Response via : Initial Calibration

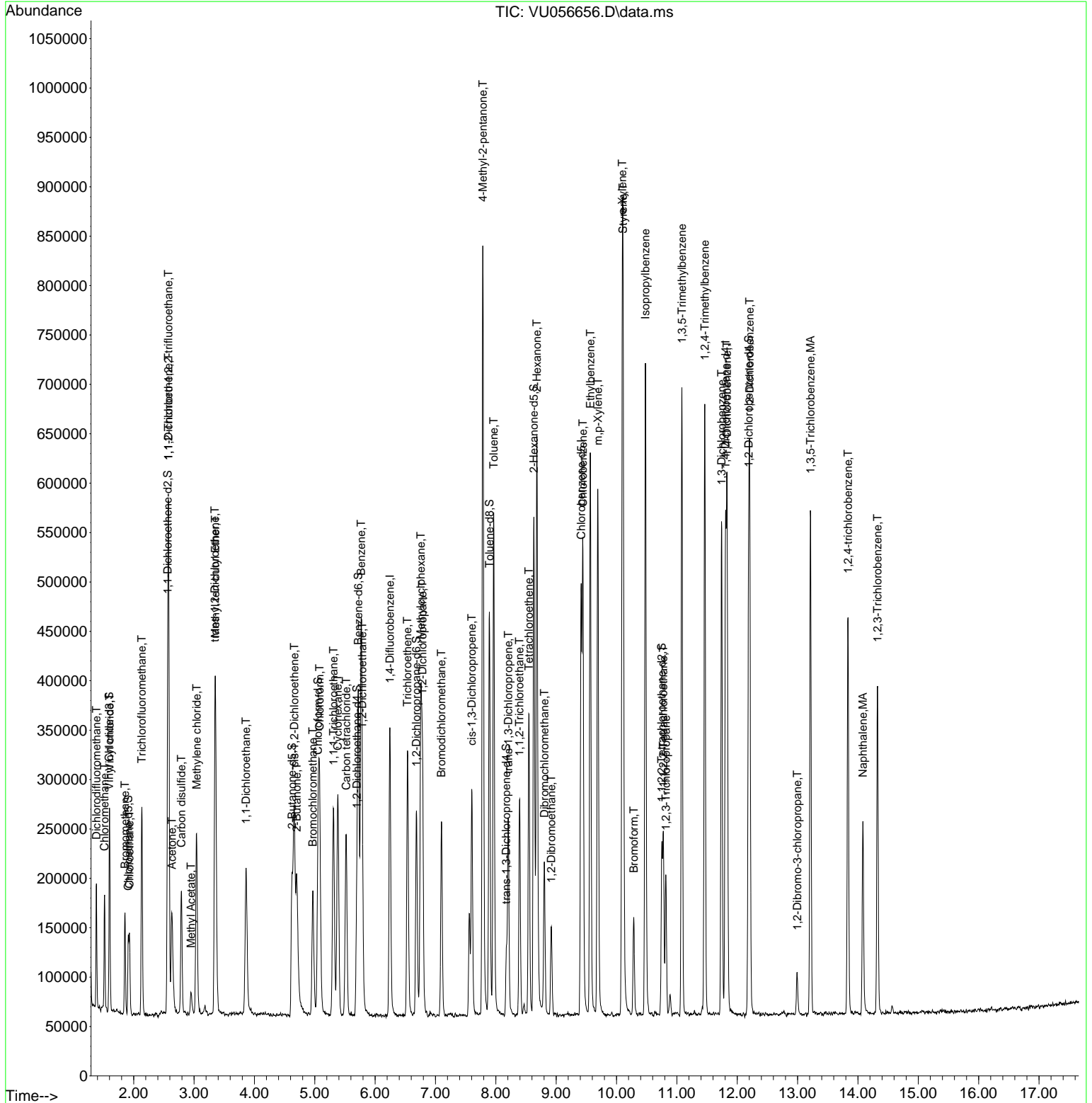
Compound	R.T.	QIon	Response	Conc	Units	Dev(Min)
27) 1,2-Dichloroethane	5.788	62	103015	5.583	ug/L	96
29) 1,1,1-Trichloroethane	5.312	97	154228	5.507	ug/L	99
30) Cyclohexane	5.383	56	112398	4.229	ug/L	98
31) Carbon tetrachloride	5.521	117	129521	5.385	ug/L	98
33) Benzene	5.769	78	354090	5.087	ug/L	100
34) Trichloroethene	6.537	95	97344	5.133	ug/L	98
35) Methylcyclohexane	6.759	83	121094	4.423	ug/L	98
37) 1,2-Dichloropropane	6.785	63	97349	5.363	ug/L	99
38) Bromodichloromethane	7.100	83	129536	5.528	ug/L	98
39) cis-1,3-Dichloropropene	7.602	75	141727	5.313	ug/L	98
40) 4-Methyl-2-pentanone	7.785	43	501161	55.694	ug/L	100
42) Toluene	7.965	91	384031	5.329	ug/L	98
44) trans-1,3-Dichloropropene	8.206	75	117337	5.518	ug/L	97
45) 1,1,2-Trichloroethane	8.393	97	68779	5.689	ug/L	98
47) Tetrachloroethene	8.550	164	65744	5.141	ug/L	98
48) 2-Hexanone	8.679	43	369495	52.708	ug/L	97
49) Dibromochloromethane	8.804	129	79855	5.808	ug/L	100
50) 1,2-Dibromoethane	8.920	107	62074	5.439	ug/L	98
51) Chlorobenzene	9.444	112	247203	5.338	ug/L	99
52) Ethylbenzene	9.566	91	423972	5.298	ug/L	99
53) m,p-Xylene	9.692	106	160362	5.451	ug/L	99
54) o-Xylene	10.097	106	155473	5.440	ug/L	99
55) Styrene	10.110	104	263692	5.547	ug/L	97
57) 1,1,2,2-Tetrachloroethane	10.775	83	85772	5.810	ug/L #	98
59) Bromoform	10.286	173	44504	5.793	ug/L	99
60) Isopropylbenzene	10.479	105	430557	5.413	ug/L	100
61) 1,2,3-Trichloropropane	10.817	75	61093	5.773	ug/L	97
62) 1,3,5-Trimethylbenzene	11.084	105	346899	5.312	ug/L	100
63) 1,2,4-Trimethylbenzene	11.463	105	348579	5.408	ug/L	98
64) 1,3-Dichlorobenzene	11.743	146	202583	5.599	ug/L	98
65) 1,4-Dichlorobenzene	11.833	146	198163	5.460	ug/L	98
67) 1,2-Dichlorobenzene	12.206	146	187577	5.651	ug/L	98
68) 1,2-Dibromo-3-chloropr...	12.994	75	11290	4.995	ug/L	95
69) 1,3,5-Trichlorobenzene	13.216	180	154839	5.684	ug/L	99
70) 1,2,4-trichlorobenzene	13.836	180	118725	5.351	ug/L	100
71) Naphthalene	14.084	128	161282	4.811	ug/L	100
72) 1,2,3-Trichlorobenzene	14.325	180	100709	5.510	ug/L	97

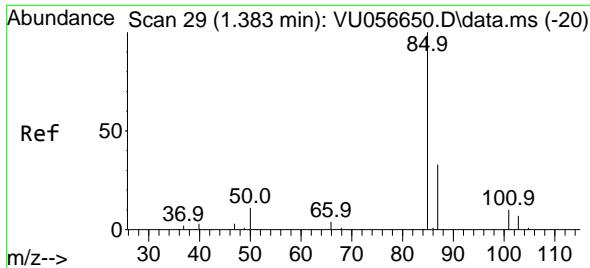
(#) = qualifier out of range (m) = manual integration (+) = signals summed

Data Path : Z:\voasrv\HPCHEM1\MSVOA\_U\Data\VU120623\  
 Data File : VU056656.D  
 Acq On : 06 Dec 2023 10:07  
 Operator : MD/SY  
 Sample : VSTDCCC005  
 Misc : 25mL/MSVOA\_U/WATER  
 ALS Vial : 2 Sample Multiplier: 1

Instrument :  
 MSVOA\_U  
 ClientSampleId :

Quant Time: Dec 07 04:49:07 2023  
 Quant Method : Z:\voasrv\HPCHEM1\MSVOA\_U\Method\SFAMUTR111323WMA.M  
 Quant Title : TRACE VOA SFAM1.0  
 QLast Update : Wed Dec 06 01:41:03 2023  
 Response via : Initial Calibration

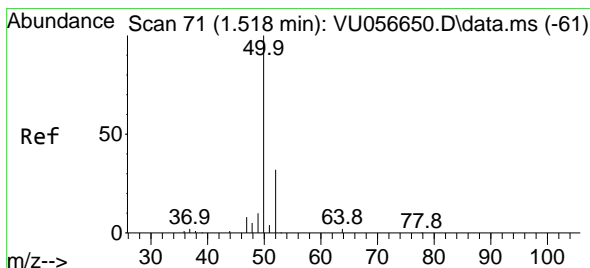
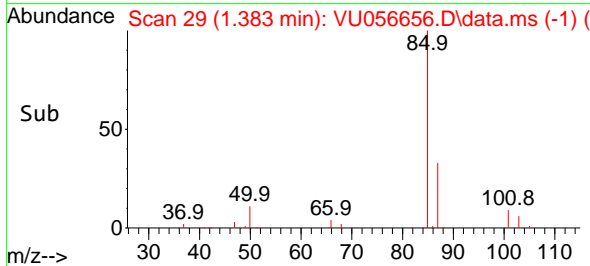
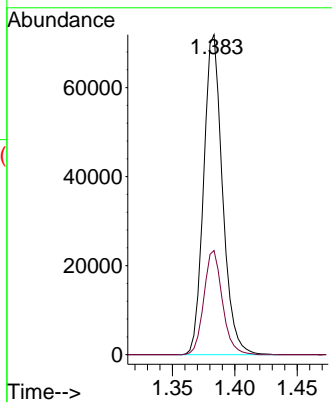
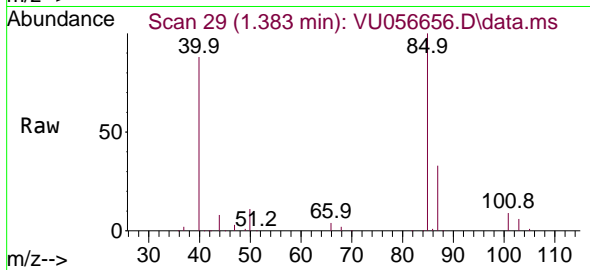




#2  
 Dichlorodifluoromethane  
 Concen: 3.970 ug/L  
 RT: 1.383 min Scan# 29  
 Delta R.T. -0.000 min  
 Lab File: VU056656.D  
 Acq: 06 Dec 2023 10:07

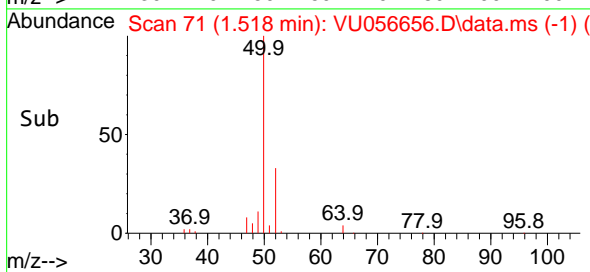
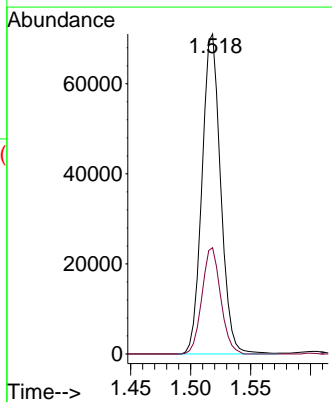
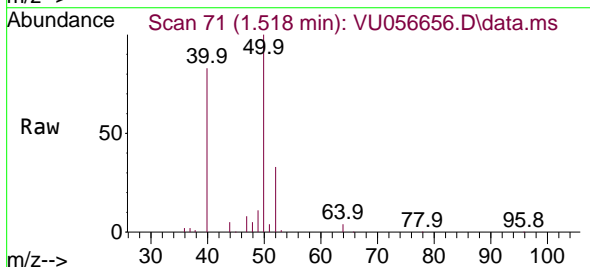
Instrument :  
 MSVOA\_U  
 ClientSampleId :

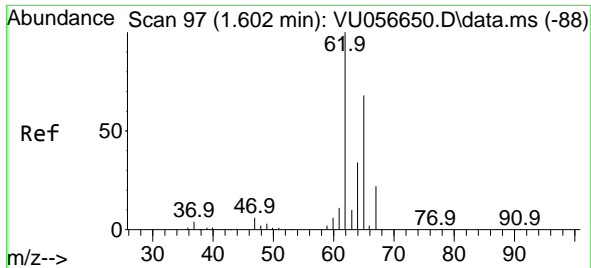
Tgt Ion: 85 Resp: 75616  
 Ion Ratio Lower Upper  
 85 100  
 87 31.9 25.0 37.4



#3  
 Chloromethane  
 Concen: 3.956 ug/L  
 RT: 1.518 min Scan# 71  
 Delta R.T. -0.000 min  
 Lab File: VU056656.D  
 Acq: 06 Dec 2023 10:07

Tgt Ion: 50 Resp: 77008  
 Ion Ratio Lower Upper  
 50 100  
 52 33.2 24.3 45.1

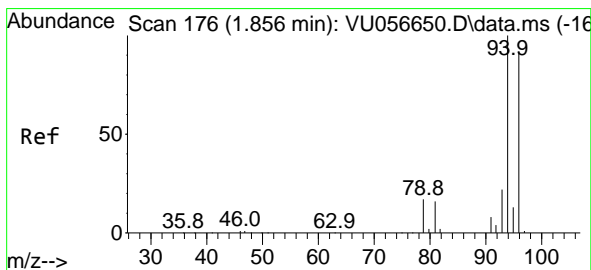
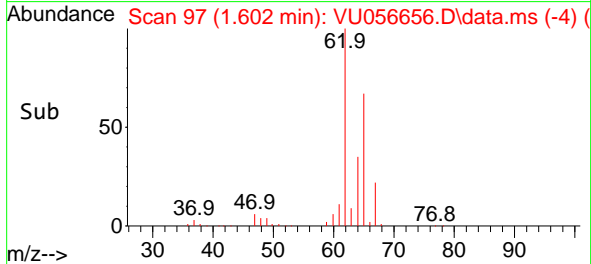
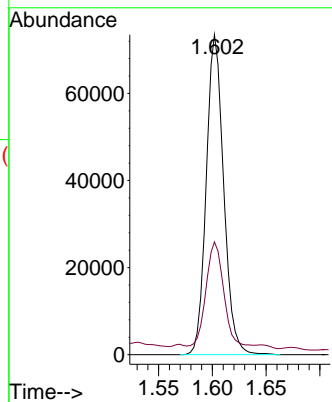
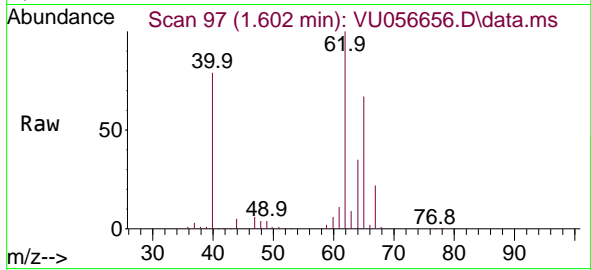




#5  
 Vinyl chloride  
 Concen: 4.420 ug/L  
 RT: 1.602 min Scan# 91  
 Delta R.T. -0.000 min  
 Lab File: VU056656.D  
 Acq: 06 Dec 2023 10:07

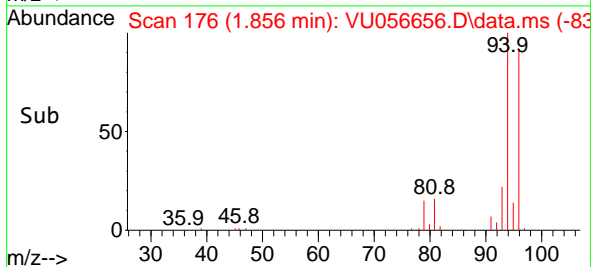
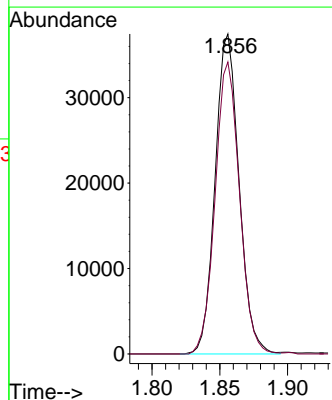
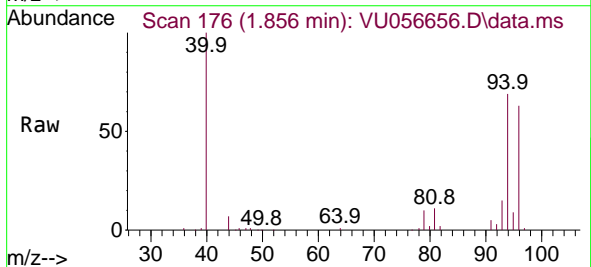
Instrument :  
 MSVOA\_U  
 ClientSampleId :

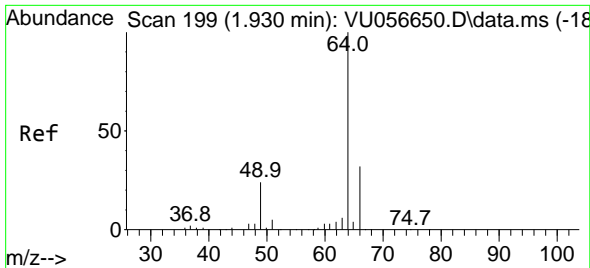
Tgt Ion: 62 Resp: 82901  
 Ion Ratio Lower Upper  
 62 100  
 64 35.3 23.3 43.3



#6  
 Bromomethane  
 Concen: 4.849 ug/L  
 RT: 1.856 min Scan# 176  
 Delta R.T. -0.000 min  
 Lab File: VU056656.D  
 Acq: 06 Dec 2023 10:07

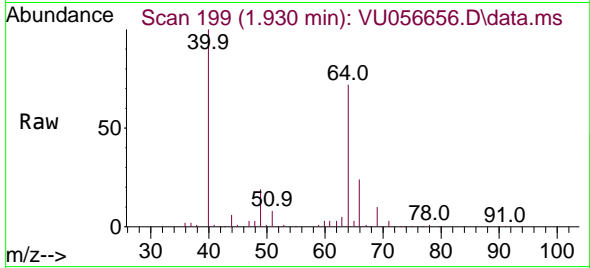
Tgt Ion: 94 Resp: 46031  
 Ion Ratio Lower Upper  
 94 100  
 96 91.2 62.6 116.2



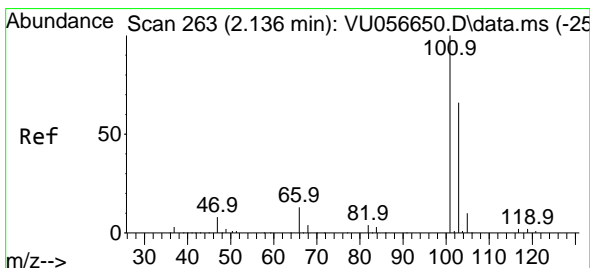
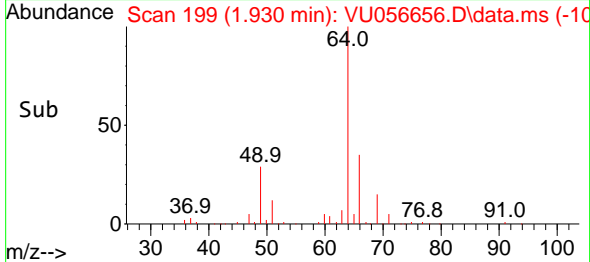
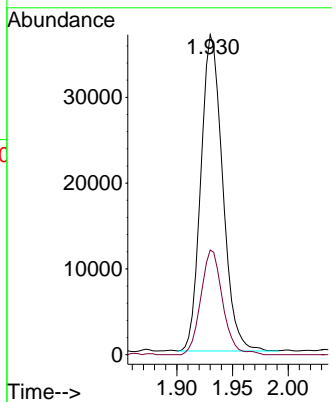


#8  
 Chloroethane  
 Concen: 4.368 ug/L  
 RT: 1.930 min Scan# 193  
 Delta R.T. -0.000 min  
 Lab File: VU056656.D  
 Acq: 06 Dec 2023 10:07

Instrument : MSVOA\_U  
 ClientSampleId :

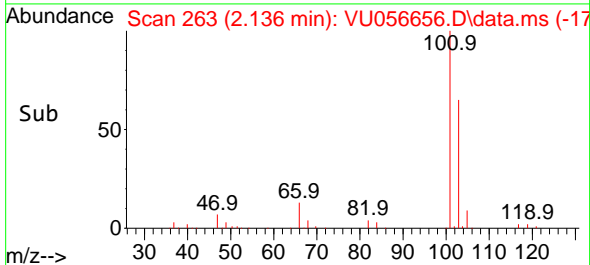
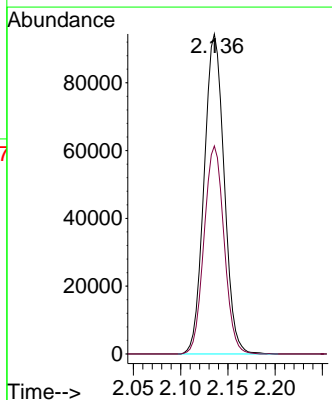
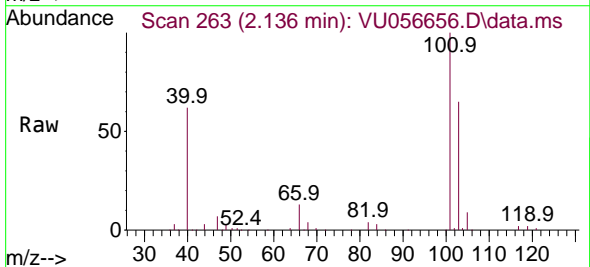


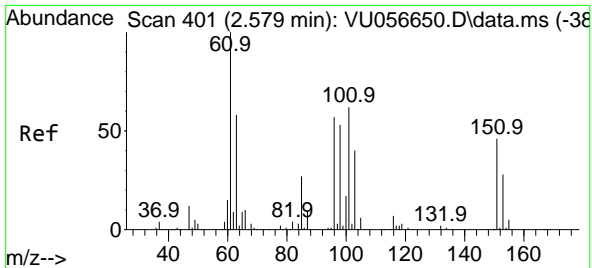
Tgt Ion: 64 Resp: 50037  
 Ion Ratio Lower Upper  
 64 100  
 66 32.7 23.9 44.5



#9  
 Trichlorofluoromethane  
 Concen: 5.143 ug/L  
 RT: 2.136 min Scan# 263  
 Delta R.T. -0.000 min  
 Lab File: VU056656.D  
 Acq: 06 Dec 2023 10:07

Tgt Ion: 101 Resp: 138984  
 Ion Ratio Lower Upper  
 101 100  
 103 64.9 52.0 78.0

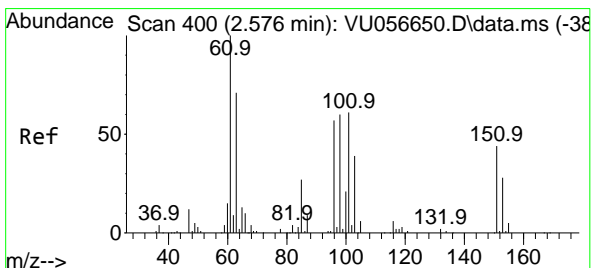
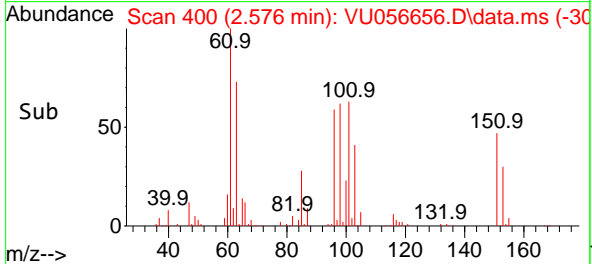
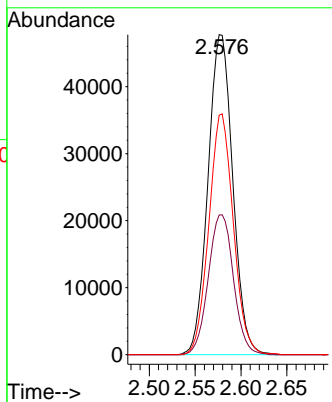
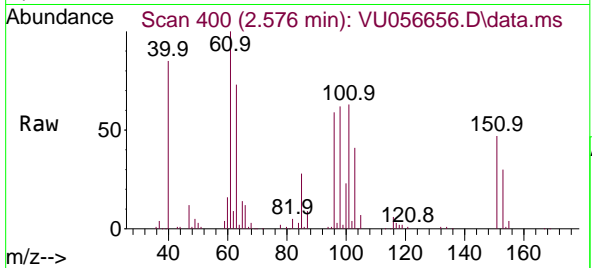




#10  
 1,1,2-Trichloro-1,2,2-trifluoroethane  
 Concen: 5.593 ug/L  
 RT: 2.576 min Scan# 400  
 Delta R.T. -0.003 min  
 Lab File: VU056656.D  
 Acq: 06 Dec 2023 10:07

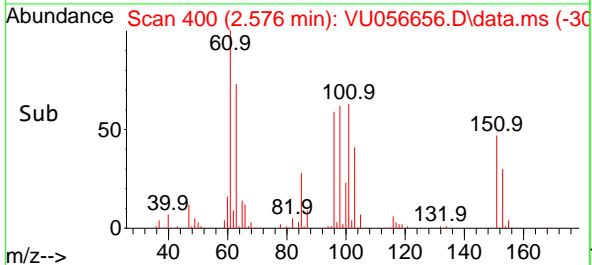
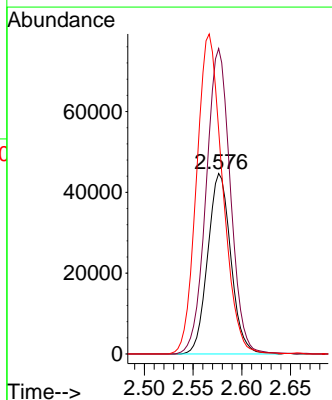
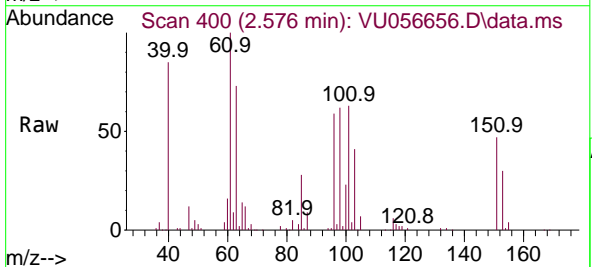
Instrument : MSVOA\_U  
 ClientSampleId :

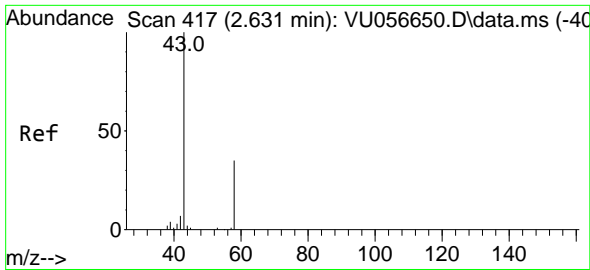
Tgt Ion	Resp	Lower	Upper
101	89748		
101	100		
85	44.4	35.4	53.0
151	74.4	58.0	87.0



#12  
 1,1-Dichloroethene  
 Concen: 4.999 ug/L  
 RT: 2.576 min Scan# 400  
 Delta R.T. -0.000 min  
 Lab File: VU056656.D  
 Acq: 06 Dec 2023 10:07

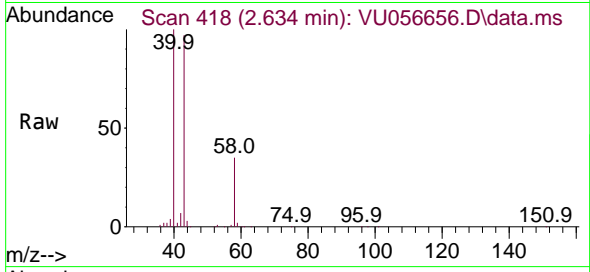
Tgt Ion	Resp	Lower	Upper
96	73573		
96	100		
61	169.2	123.1	228.7
63	124.1	93.3	173.3



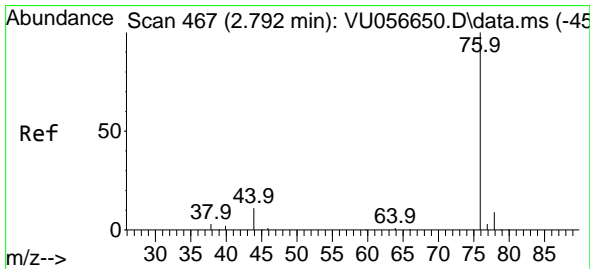
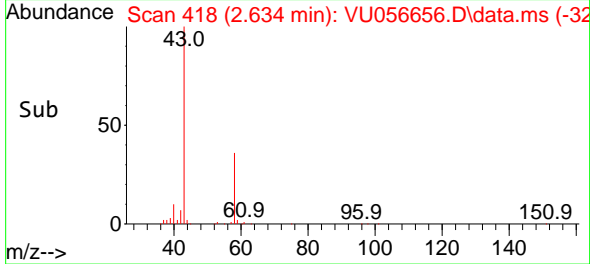
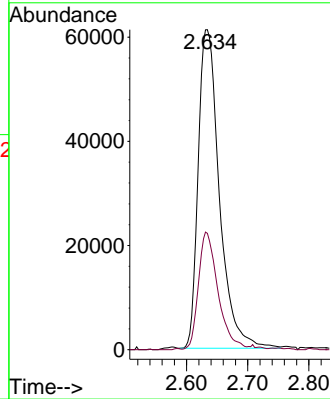


#13  
 Acetone  
 Concen: 48.295 ug/L  
 RT: 2.634 min Scan# 417  
 Delta R.T. 0.003 min  
 Lab File: VU056656.D  
 Acq: 06 Dec 2023 10:07

Instrument :  
 MSVOA\_U  
 ClientSampleId :

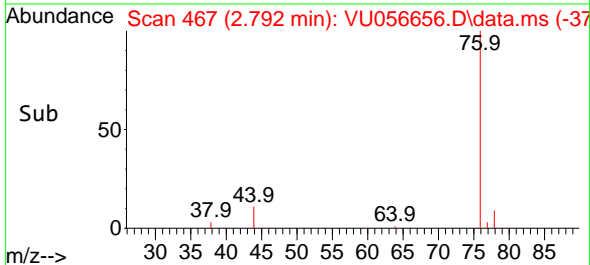
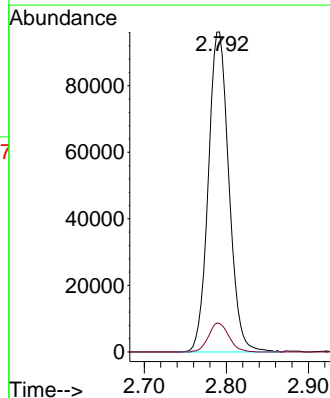
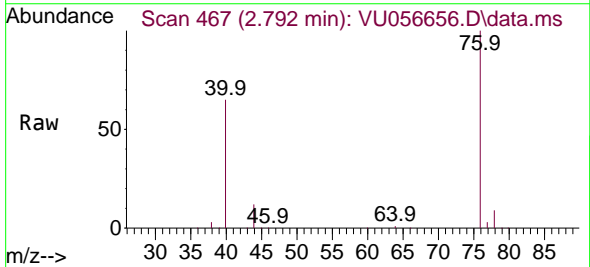


Tgt Ion: 43 Resp: 147486  
 Ion Ratio Lower Upper  
 43 100  
 58 33.6 0.0 70.0

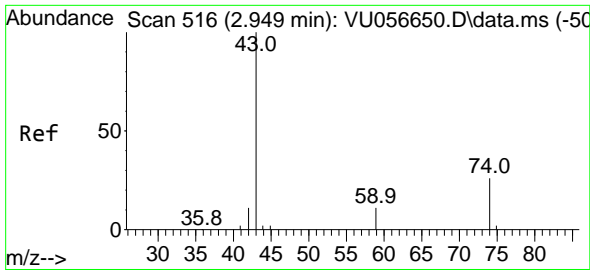


#14  
 Carbon disulfide  
 Concen: 3.499 ug/L  
 RT: 2.792 min Scan# 467  
 Delta R.T. -0.000 min  
 Lab File: VU056656.D  
 Acq: 06 Dec 2023 10:07

Tgt Ion: 76 Resp: 167547  
 Ion Ratio Lower Upper  
 76 100  
 78 8.9 6.8 10.2

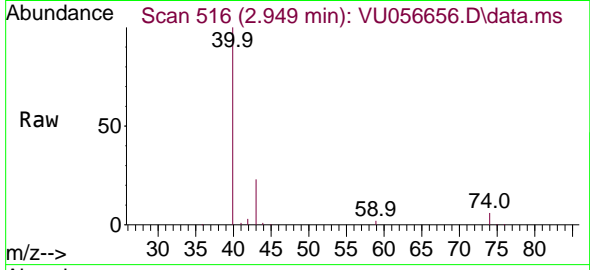




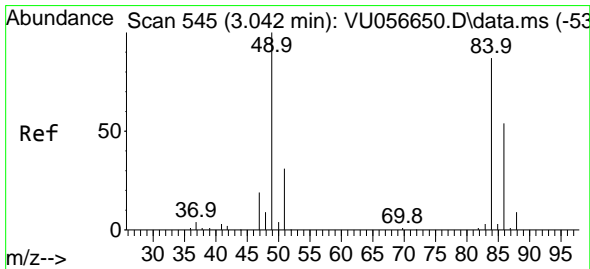
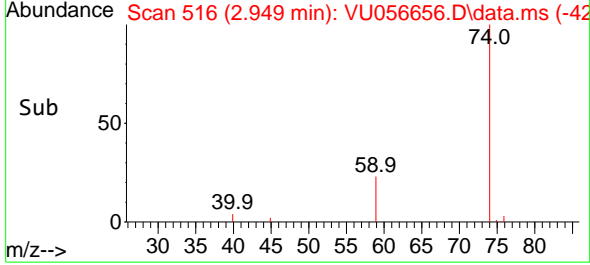
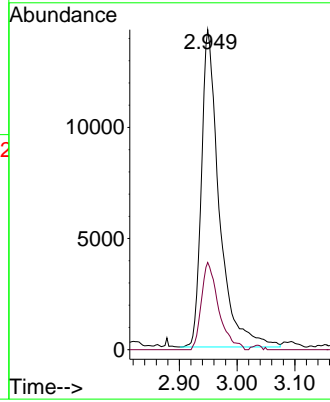


#15  
 Methyl Acetate  
 Concen: 5.650 ug/L  
 RT: 2.949 min Scan# 516  
 Delta R.T. -0.000 min  
 Lab File: VU056656.D  
 Acq: 06 Dec 2023 10:07

Instrument : MSVOA\_U  
 ClientSampleId :

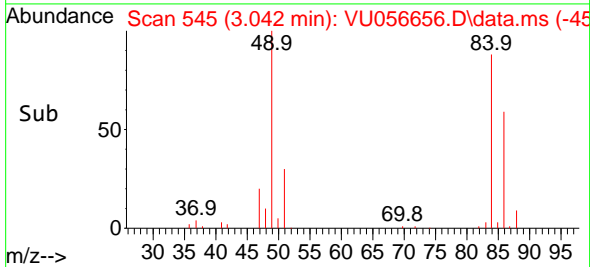
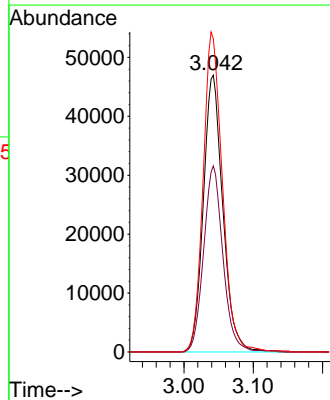
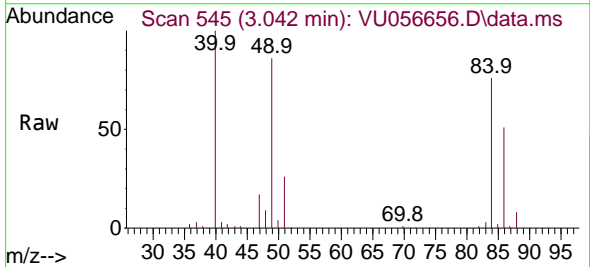


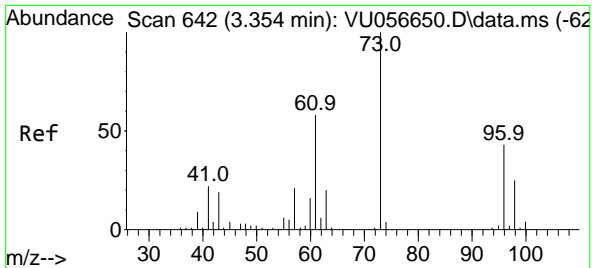
Tgt Ion: 43 Resp: 30705  
 Ion Ratio Lower Upper  
 43 100  
 74 26.4 20.6 31.0



#16  
 Methylene chloride  
 Concen: 4.702 ug/L  
 RT: 3.042 min Scan# 545  
 Delta R.T. -0.000 min  
 Lab File: VU056656.D  
 Acq: 06 Dec 2023 10:07

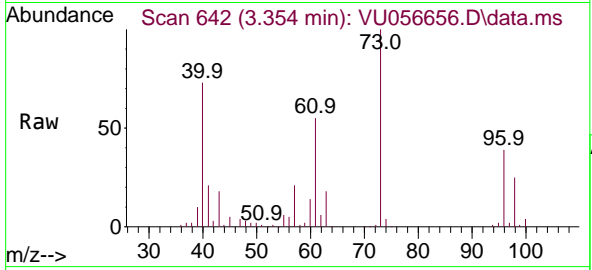
Tgt Ion: 84 Resp: 91571  
 Ion Ratio Lower Upper  
 84 100  
 86 67.2 44.7 83.1  
 49 113.2 81.8 152.0



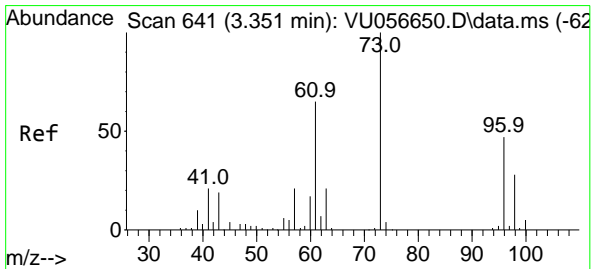
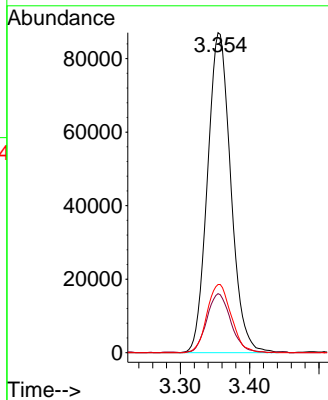
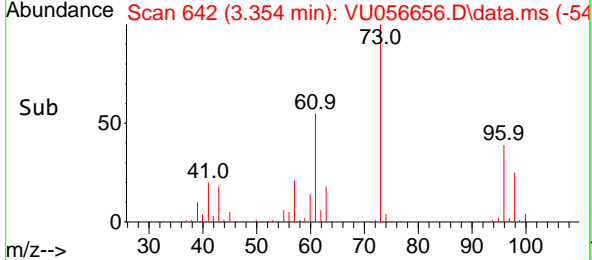


#17  
 Methyl tert-butyl Ether  
 Concen: 5.682 ug/L  
 RT: 3.354 min Scan# 641  
 Delta R.T. -0.000 min  
 Lab File: VU056656.D  
 Acq: 06 Dec 2023 10:07

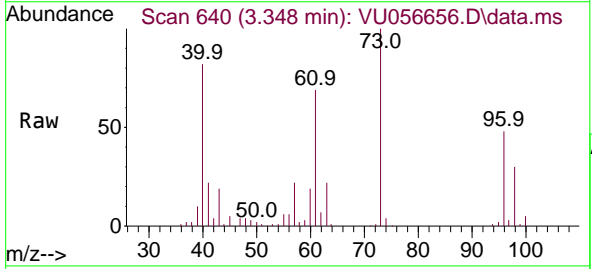
Instrument : MSVOA\_U  
 ClientSampleId :



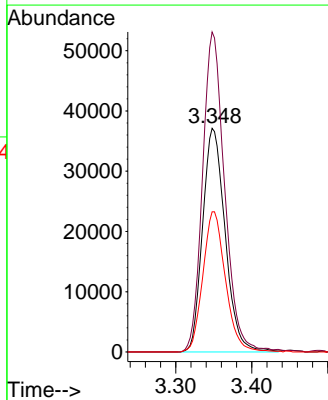
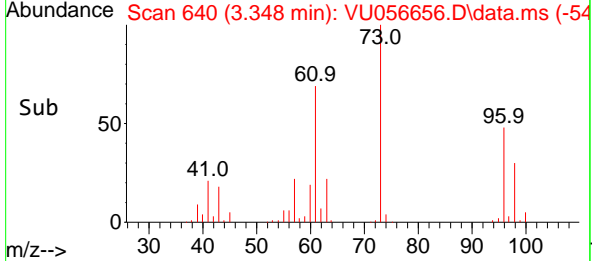
Tgt Ion: 73 Resp: 203164  
 Ion Ratio Lower Upper  
 73 100  
 43 19.1 15.1 22.7  
 57 22.2 17.8 26.8

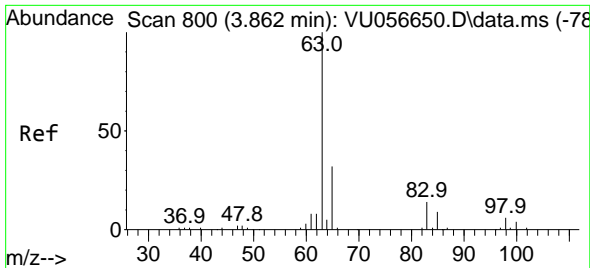


#18  
 trans-1,2-Dichloroethene  
 Concen: 5.062 ug/L  
 RT: 3.348 min Scan# 640  
 Delta R.T. -0.003 min  
 Lab File: VU056656.D  
 Acq: 06 Dec 2023 10:07



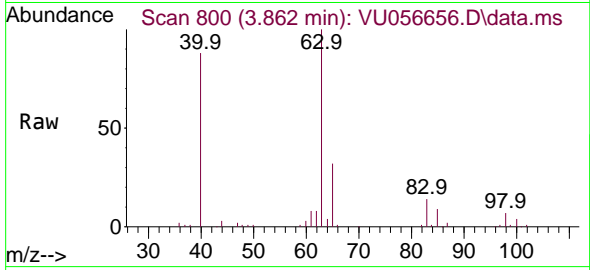
Tgt Ion: 96 Resp: 76648  
 Ion Ratio Lower Upper  
 96 100  
 61 143.1 101.7 188.9  
 98 62.7 43.0 80.0





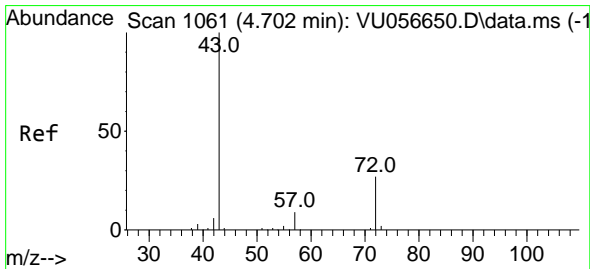
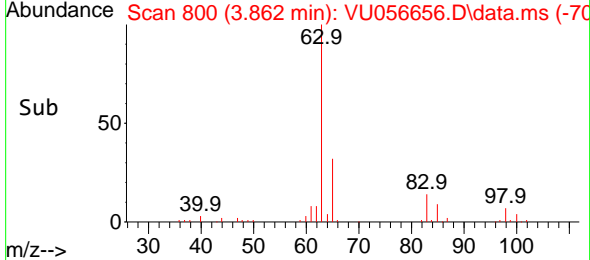
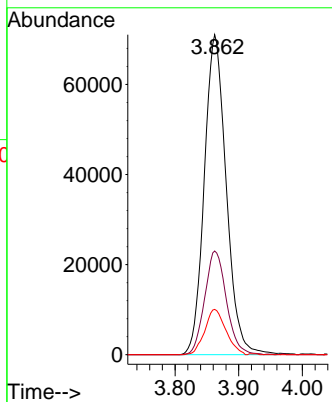
#19  
 1,1-Dichloroethane  
 Concen: 5.675 ug/L  
 RT: 3.862 min Scan# 800  
 Delta R.T. -0.000 min  
 Lab File: VU056656.D  
 Acq: 06 Dec 2023 10:07

Instrument : MSVOA\_U  
 ClientSampleId :



Tgt Ion: 63 Resp: 170212

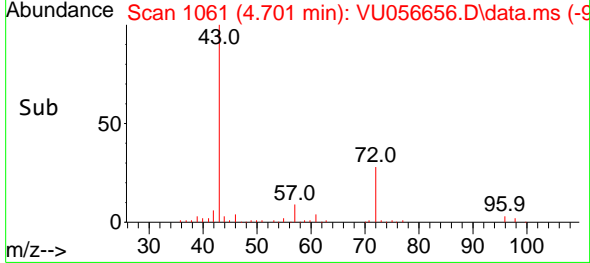
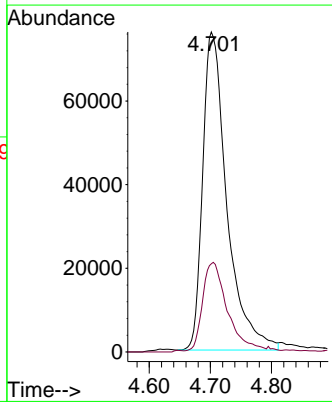
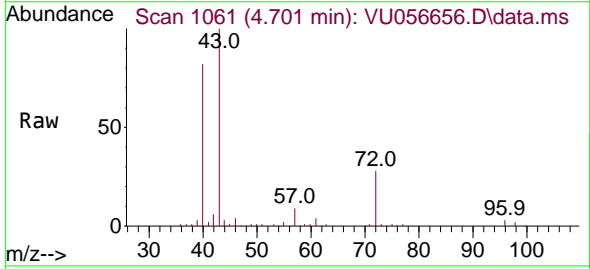
Ion	Ratio	Lower	Upper
63	100		
65	32.4	21.8	40.6
83	14.1	9.7	17.9

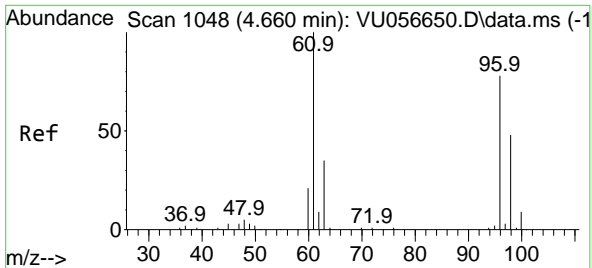


#21  
 2-Butanone  
 Concen: 52.759 ug/L  
 RT: 4.701 min Scan# 1061  
 Delta R.T. -0.000 min  
 Lab File: VU056656.D  
 Acq: 06 Dec 2023 10:07

Tgt Ion: 43 Resp: 209064

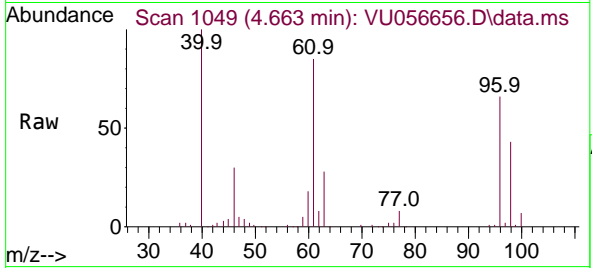
Ion	Ratio	Lower	Upper
43	100		
72	28.1	14.2	42.6



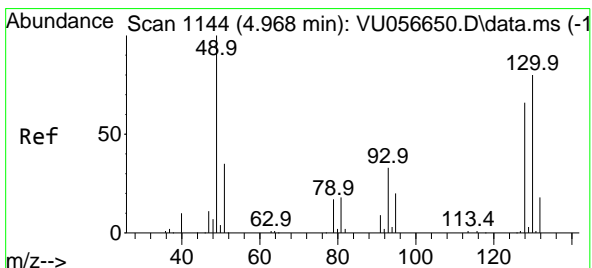
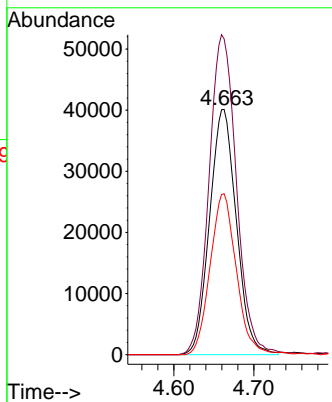
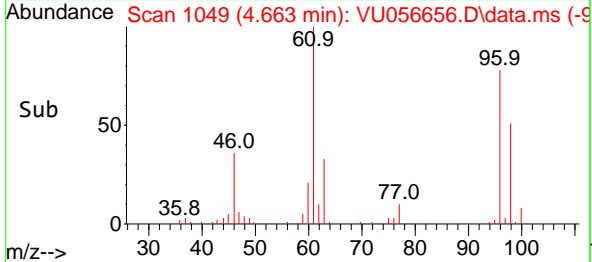


#22  
 cis-1,2-Dichloroethene  
 Concen: 5.435 ug/L  
 RT: 4.663 min Scan# 1049  
 Delta R.T. 0.003 min  
 Lab File: VU056656.D  
 Acq: 06 Dec 2023 10:07

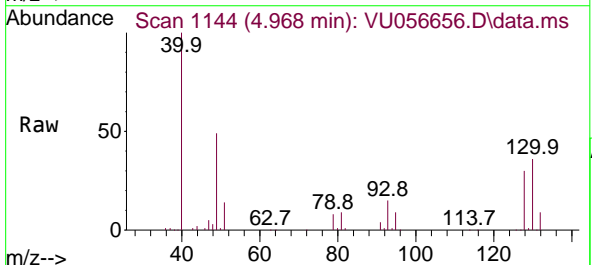
Instrument : MSVOA\_U  
 ClientSampleId :



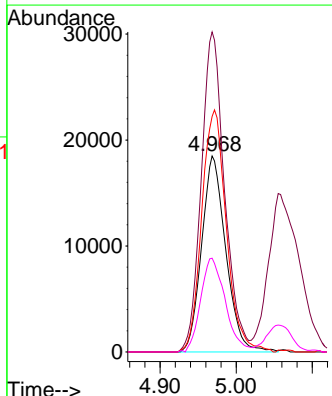
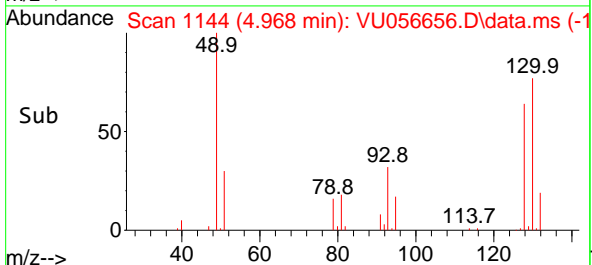
Tgt Ion: 96 Resp: 93334  
 Ion Ratio Lower Upper  
 96 100  
 61 128.8 93.2 173.2  
 98 65.6 44.8 83.2

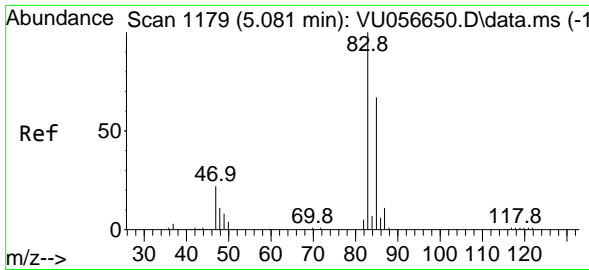


#23  
 Bromochloromethane  
 Concen: 5.776 ug/L  
 RT: 4.968 min Scan# 1144  
 Delta R.T. -0.000 min  
 Lab File: VU056656.D  
 Acq: 06 Dec 2023 10:07



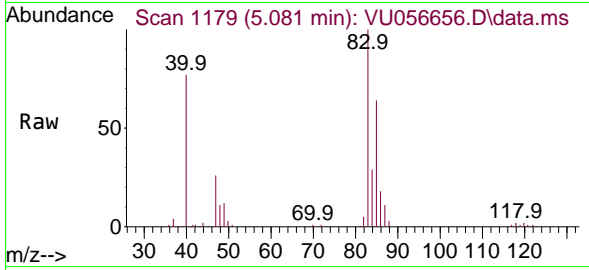
Tgt Ion:128 Resp: 40823  
 Ion Ratio Lower Upper  
 128 100  
 49 163.3 113.4 210.6  
 130 120.2 84.8 157.6  
 51 47.9 39.8 59.6



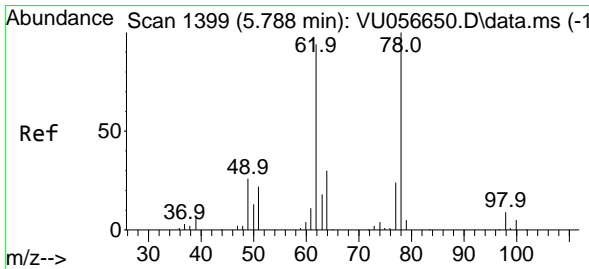
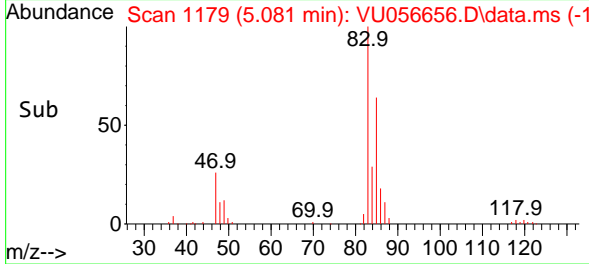
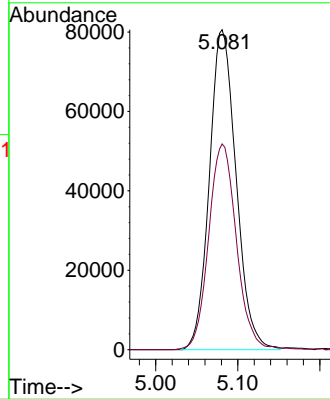


#25  
 Chloroform  
 Concen: 5.610 ug/L  
 RT: 5.081 min Scan# 1179  
 Delta R.T. -0.000 min  
 Lab File: VU056656.D  
 Acq: 06 Dec 2023 10:07

Instrument : MSVOA\_U  
 ClientSampleId :

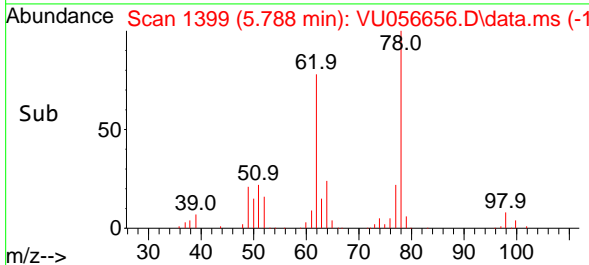
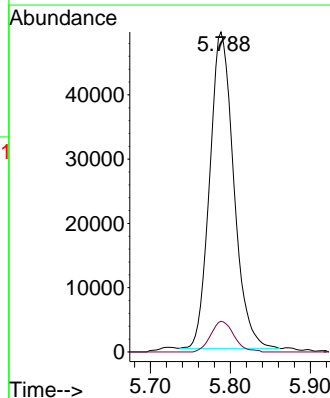
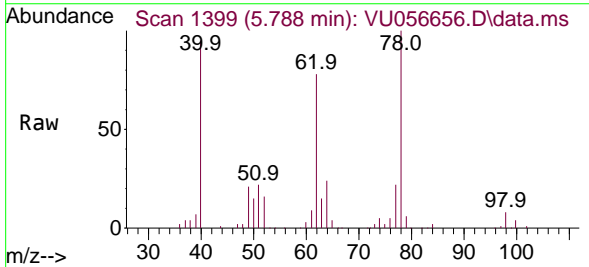


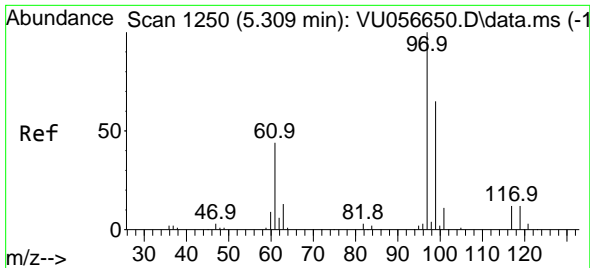
Tgt Ion: 83 Resp: 182292  
 Ion Ratio Lower Upper  
 83 100  
 85 64.3 47.0 87.2



#27  
 1,2-Dichloroethane  
 Concen: 5.583 ug/L  
 RT: 5.788 min Scan# 1399  
 Delta R.T. -0.000 min  
 Lab File: VU056656.D  
 Acq: 06 Dec 2023 10:07

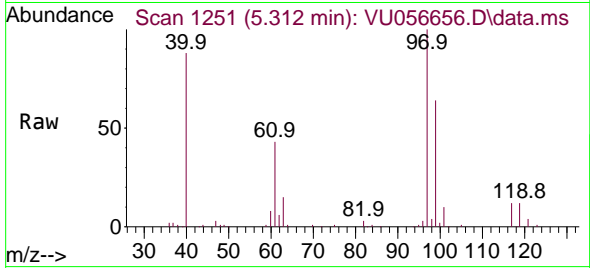
Tgt Ion: 62 Resp: 103015  
 Ion Ratio Lower Upper  
 62 100  
 98 9.6 6.6 10.0





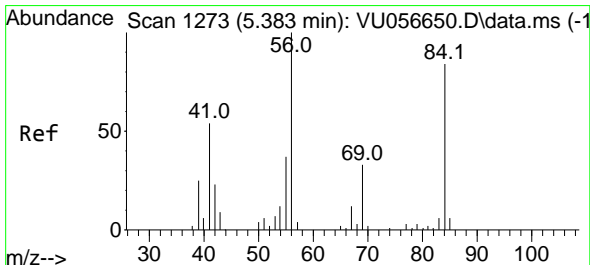
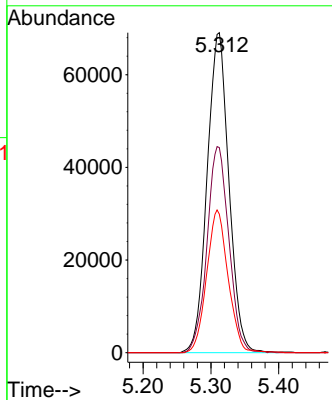
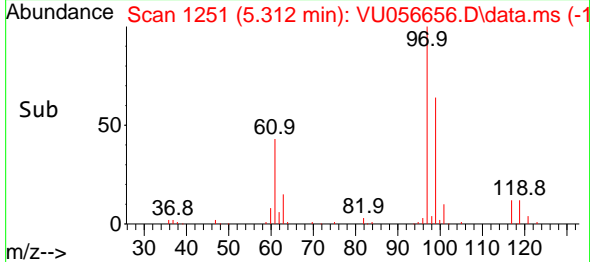
#29  
 1,1,1-Trichloroethane  
 Concen: 5.507 ug/L  
 RT: 5.312 min Scan# 11  
 Delta R.T. 0.003 min  
 Lab File: VU056656.D  
 Acq: 06 Dec 2023 10:07

Instrument :  
 MSVOA\_U  
 ClientSampleId :

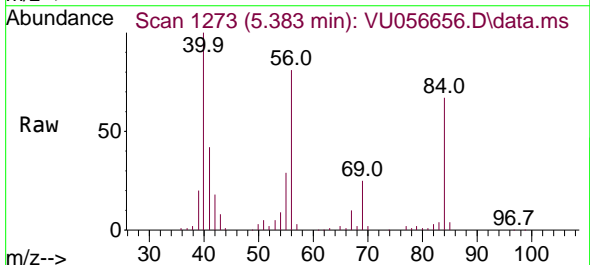


Tgt Ion: 97 Resp: 154228

Ion	Ratio	Lower	Upper
97	100		
99	64.7	51.6	77.4
61	44.0	34.3	51.5

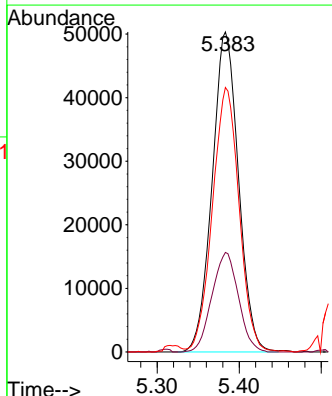
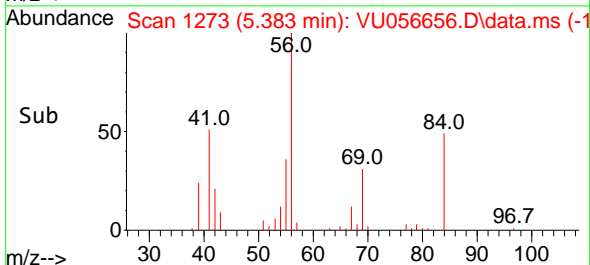


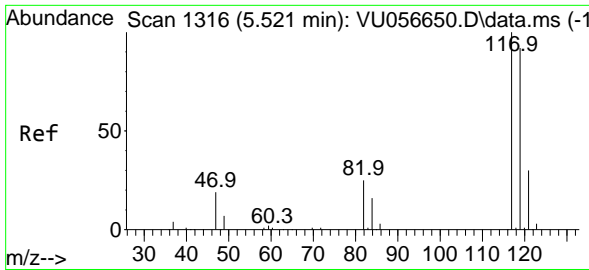
#30  
 Cyclohexane  
 Concen: 4.229 ug/L  
 RT: 5.383 min Scan# 1273  
 Delta R.T. -0.000 min  
 Lab File: VU056656.D  
 Acq: 06 Dec 2023 10:07



Tgt Ion: 56 Resp: 112398

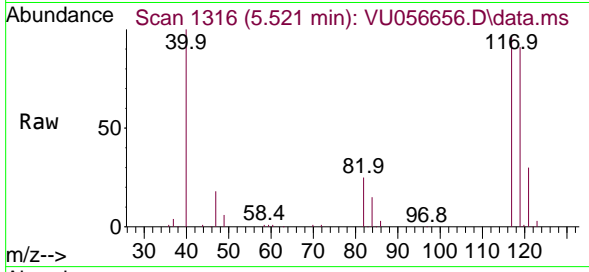
Ion	Ratio	Lower	Upper
56	100		
69	31.2	25.4	38.2
84	84.0	68.6	103.0



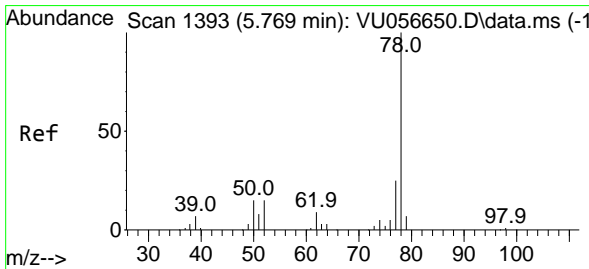
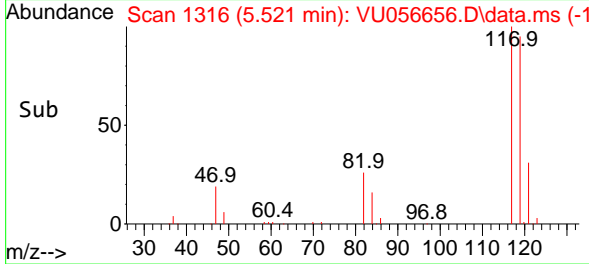
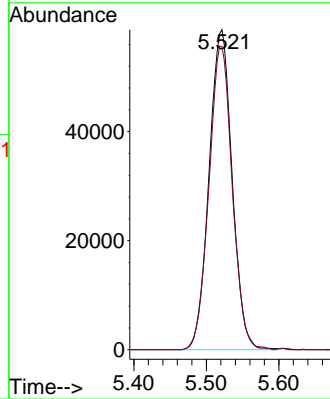


#31  
 Carbon tetrachloride  
 Concen: 5.385 ug/L  
 RT: 5.521 min Scan# 1117  
 Delta R.T. -0.000 min  
 Lab File: VU056656.D  
 Acq: 06 Dec 2023 10:07

Instrument : MSVOA\_U  
 ClientSampleId :

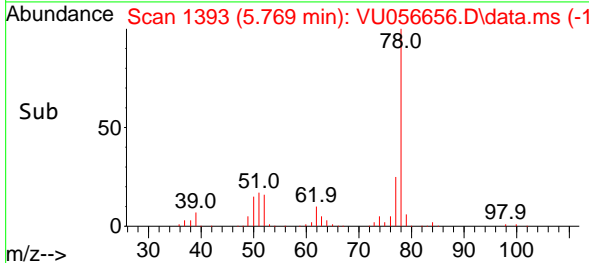
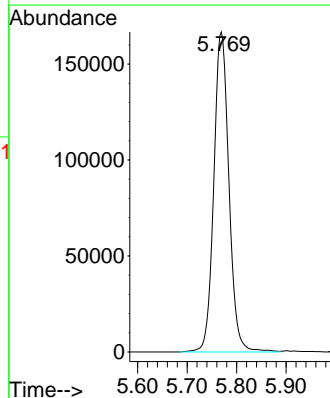
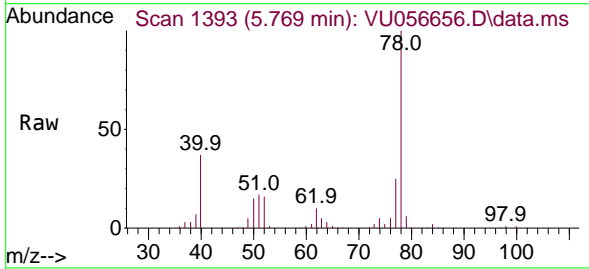


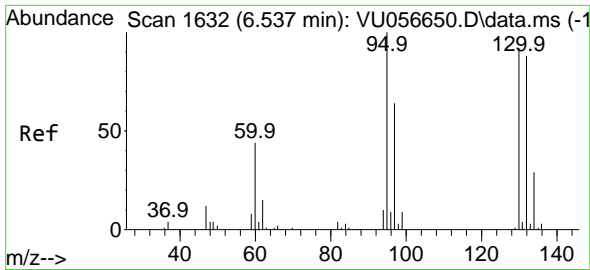
Tgt Ion:117 Resp: 129521  
 Ion Ratio Lower Upper  
 117 100  
 119 95.8 78.1 117.1



#33  
 Benzene  
 Concen: 5.087 ug/L  
 RT: 5.769 min Scan# 1393  
 Delta R.T. -0.000 min  
 Lab File: VU056656.D  
 Acq: 06 Dec 2023 10:07

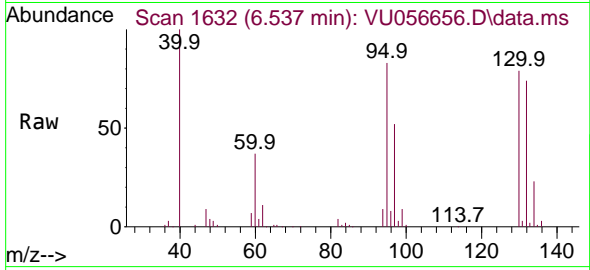
Tgt Ion: 78 Resp: 354090



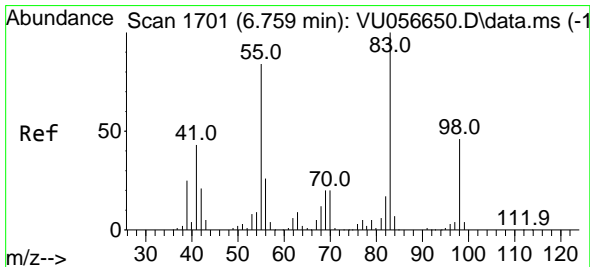
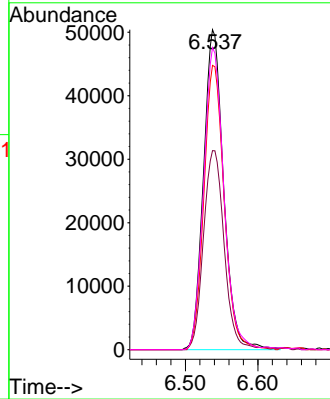
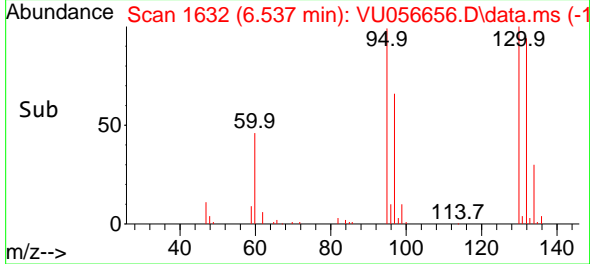


#34  
 Trichloroethene  
 Concen: 5.133 ug/L  
 RT: 6.537 min Scan# 1632  
 Delta R.T. -0.000 min  
 Lab File: VU056656.D  
 Acq: 06 Dec 2023 10:07

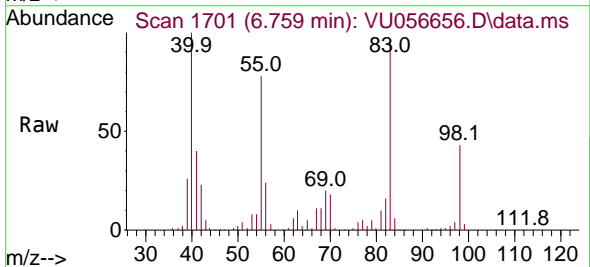
Instrument : MSVOA\_U  
 ClientSampleId :



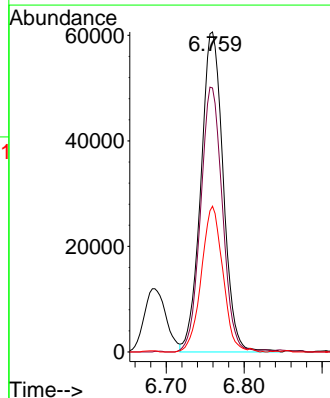
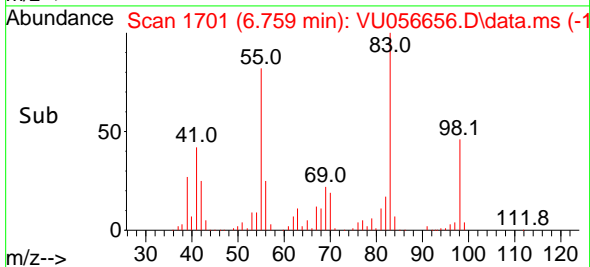
Tgt Ion: 95 Resp: 97344  
 Ion Ratio Lower Upper  
 95 100  
 97 62.2 46.5 86.3  
 132 88.9 62.0 115.2  
 130 94.4 66.3 123.1



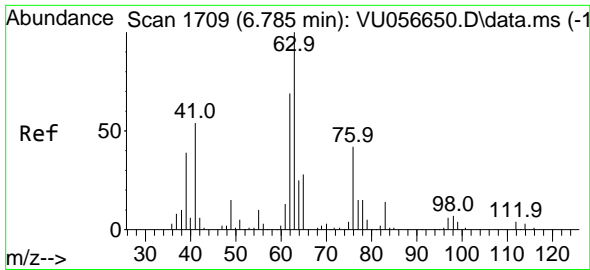
#35  
 Methylcyclohexane  
 Concen: 4.423 ug/L  
 RT: 6.759 min Scan# 1701  
 Delta R.T. -0.000 min  
 Lab File: VU056656.D  
 Acq: 06 Dec 2023 10:07



Tgt Ion: 83 Resp: 121094  
 Ion Ratio Lower Upper  
 83 100  
 55 80.4 62.9 94.3  
 98 43.4 35.3 52.9

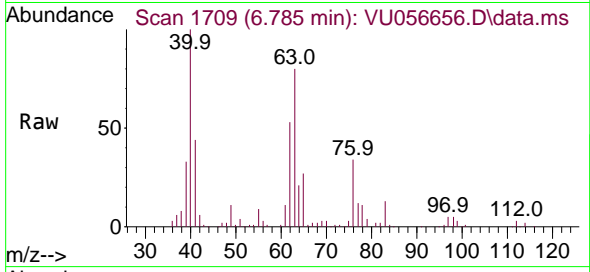




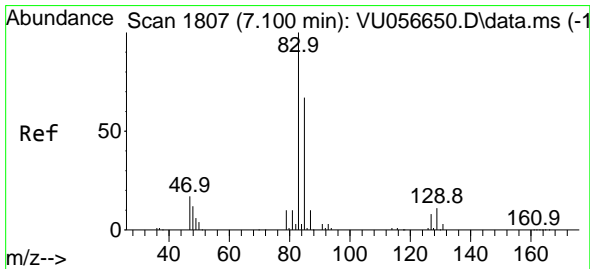
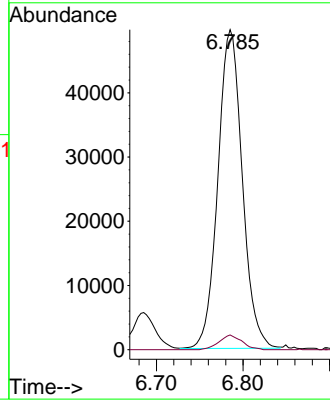
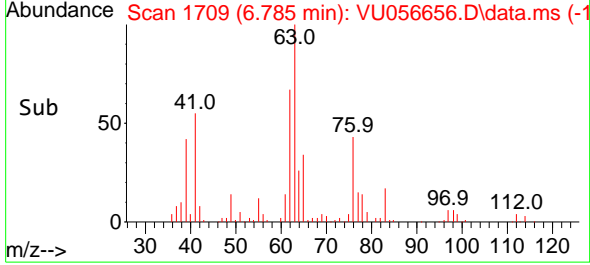


#37  
 1,2-Dichloropropane  
 Concen: 5.363 ug/L  
 RT: 6.785 min Scan# 1709  
 Delta R.T. -0.000 min  
 Lab File: VU056656.D  
 Acq: 06 Dec 2023 10:07

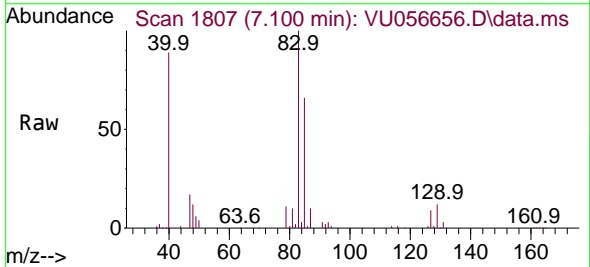
Instrument : MSVOA\_U  
 ClientSampleId :



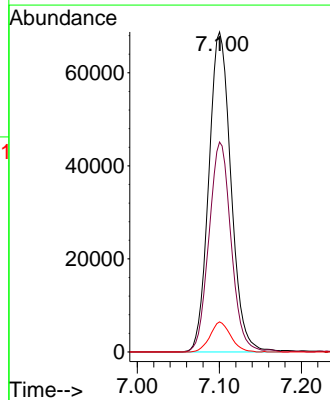
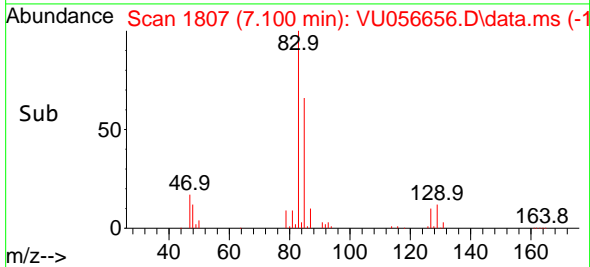
Tgt Ion: 63 Resp: 97349  
 Ion Ratio Lower Upper  
 63 100  
 112 4.3 3.2 4.8

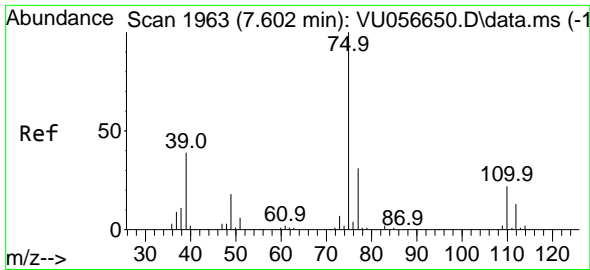


#38  
 Bromodichloromethane  
 Concen: 5.528 ug/L  
 RT: 7.100 min Scan# 1807  
 Delta R.T. -0.000 min  
 Lab File: VU056656.D  
 Acq: 06 Dec 2023 10:07



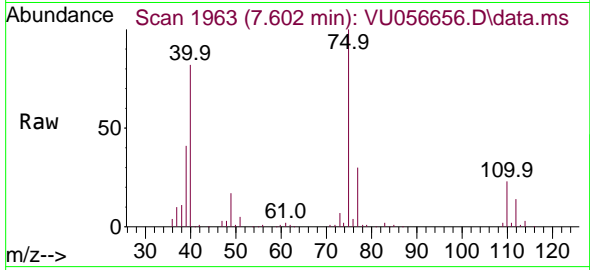
Tgt Ion: 83 Resp: 129536  
 Ion Ratio Lower Upper  
 83 100  
 85 65.6 44.9 83.5  
 127 9.4 6.9 10.3



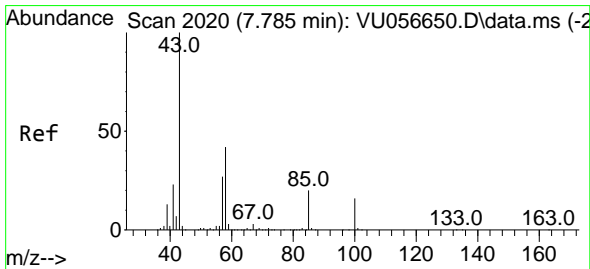
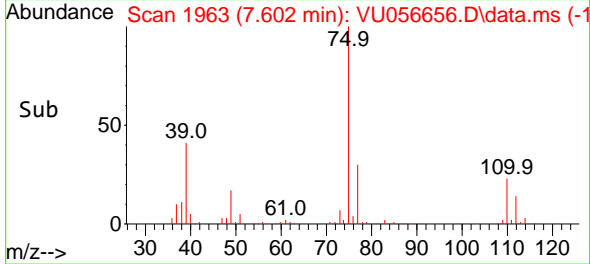
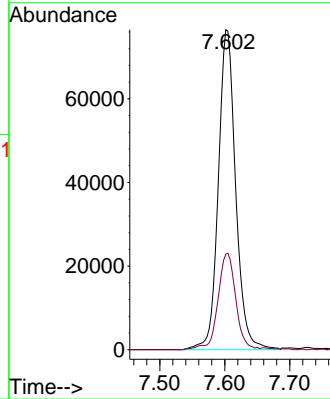


#39  
 cis-1,3-Dichloropropene  
 Concen: 5.313 ug/L  
 RT: 7.602 min Scan# 1963  
 Delta R.T. -0.000 min  
 Lab File: VU056656.D  
 Acq: 06 Dec 2023 10:07

Instrument : MSVOA\_U  
 ClientSampleId :

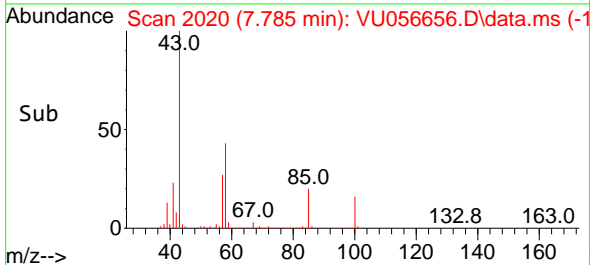
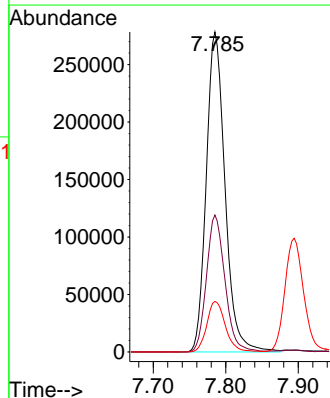
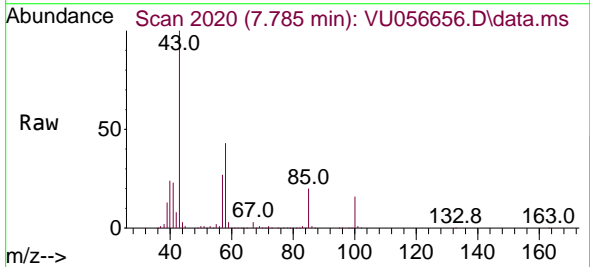


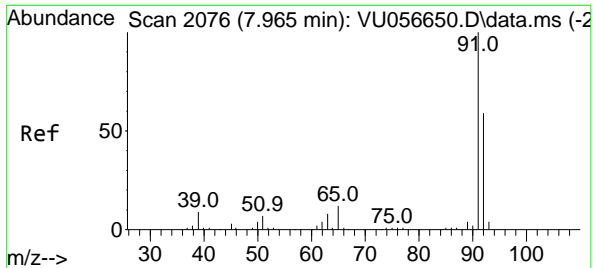
Tgt Ion: 75 Resp: 141727  
 Ion Ratio Lower Upper  
 75 100  
 77 29.8 21.5 39.9



#40  
 4-Methyl-2-pentanone  
 Concen: 55.694 ug/L  
 RT: 7.785 min Scan# 2020  
 Delta R.T. -0.000 min  
 Lab File: VU056656.D  
 Acq: 06 Dec 2023 10:07

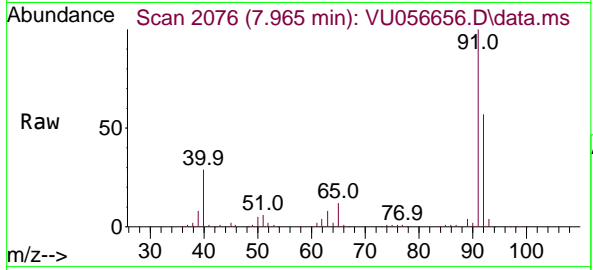
Tgt Ion: 43 Resp: 501161  
 Ion Ratio Lower Upper  
 43 100  
 58 42.2 33.8 50.8  
 100 15.7 13.0 19.4



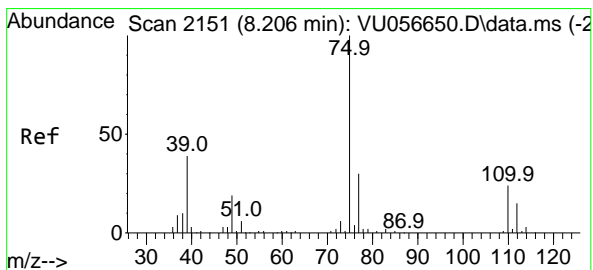
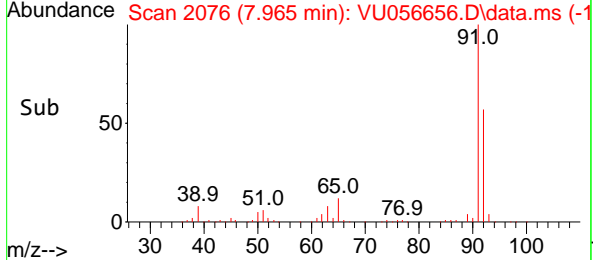
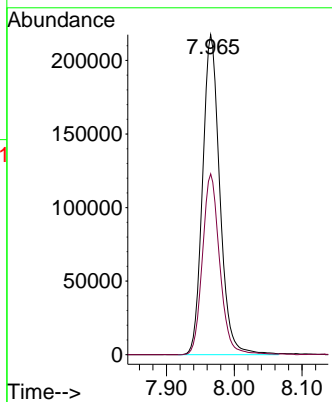


#42  
 Toluene  
 Concen: 5.329 ug/L  
 RT: 7.965 min Scan# 2076  
 Delta R.T. -0.000 min  
 Lab File: VU056656.D  
 Acq: 06 Dec 2023 10:07

Instrument : MSVOA\_U  
 ClientSampleId :

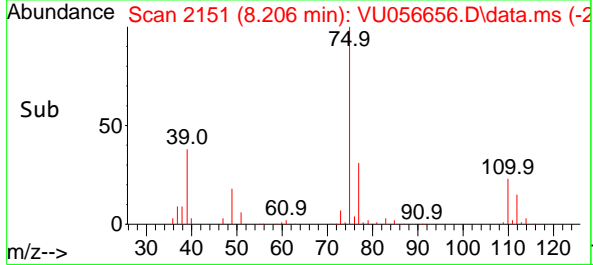
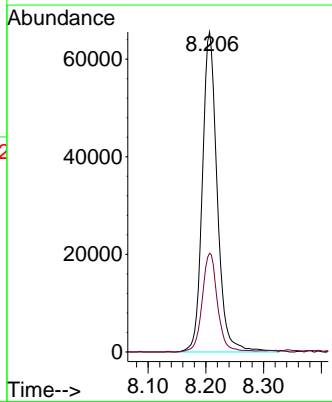
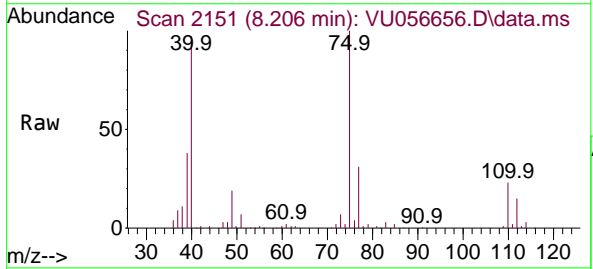


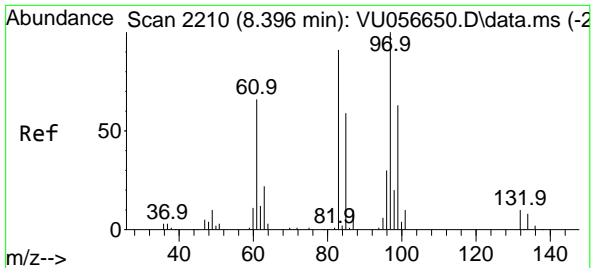
Tgt Ion: 91 Resp: 384031  
 Ion Ratio Lower Upper  
 91 100  
 92 56.5 40.6 75.4



#44  
 trans-1,3-Dichloropropene  
 Concen: 5.518 ug/L  
 RT: 8.206 min Scan# 2151  
 Delta R.T. -0.000 min  
 Lab File: VU056656.D  
 Acq: 06 Dec 2023 10:07

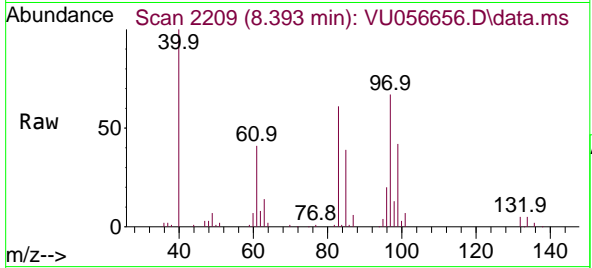
Tgt Ion: 75 Resp: 117337  
 Ion Ratio Lower Upper  
 75 100  
 77 30.9 22.8 42.4





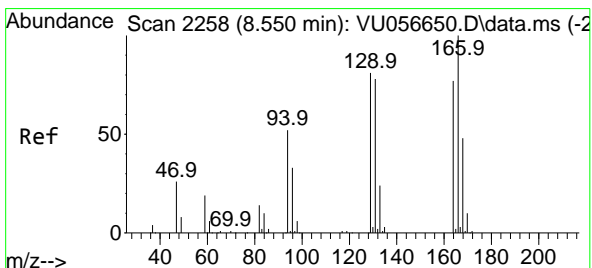
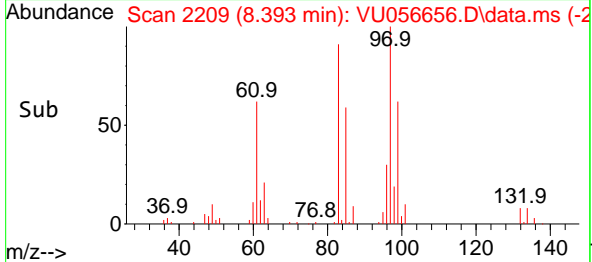
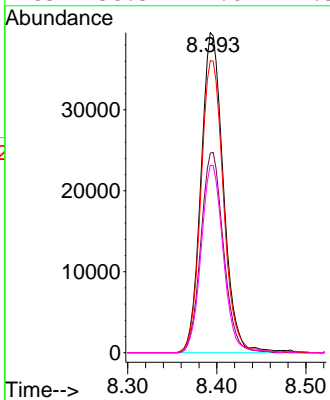
#45  
 1,1,2-Trichloroethane  
 Concen: 5.689 ug/L  
 RT: 8.393 min Scan# 21  
 Delta R.T. -0.003 min  
 Lab File: VU056656.D  
 Acq: 06 Dec 2023 10:07

Instrument :  
 MSVOA\_U  
 ClientSampleId :



Tgt Ion: 97 Resp: 68779

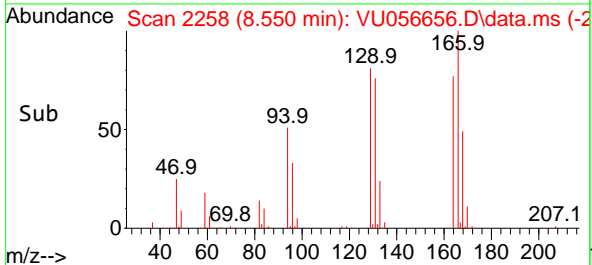
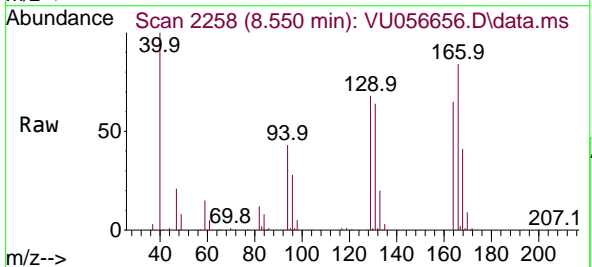
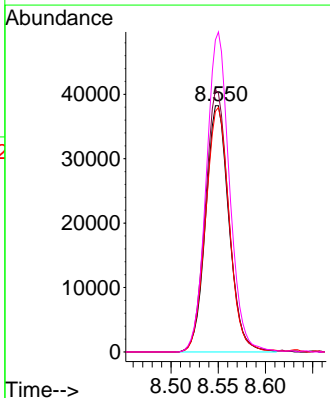
Ion	Ratio	Lower	Upper
97	100		
99	62.4	44.3	82.3
83	91.3	65.4	121.4
85	58.5	41.6	77.3

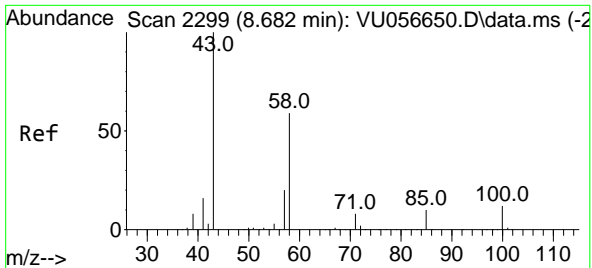


#47  
 Tetrachloroethene  
 Concen: 5.141 ug/L  
 RT: 8.550 min Scan# 2258  
 Delta R.T. -0.000 min  
 Lab File: VU056656.D  
 Acq: 06 Dec 2023 10:07

Tgt Ion: 164 Resp: 65744

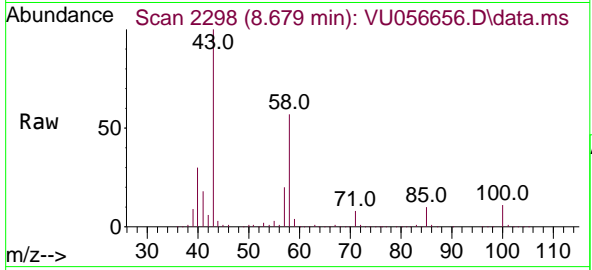
Ion	Ratio	Lower	Upper
164	100		
129	105.0	71.0	131.9
131	99.3	70.3	130.7
166	129.9	89.8	166.8





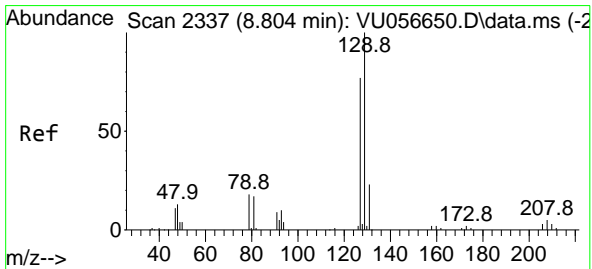
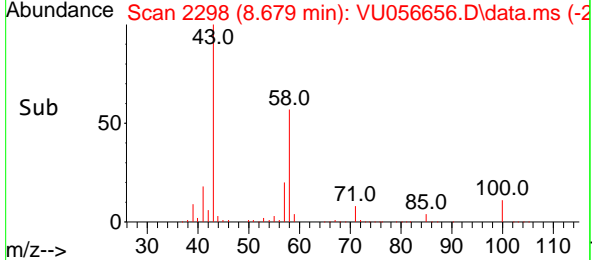
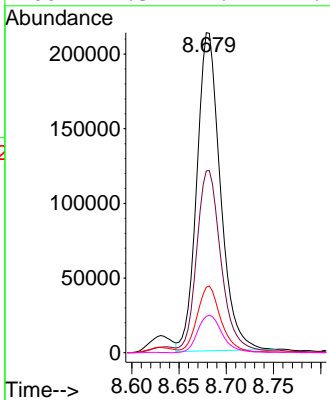
#48  
 2-Hexanone  
 Concen: 52.708 ug/L  
 RT: 8.679 min Scan# 2298  
 Delta R.T. -0.003 min  
 Lab File: VU056656.D  
 Acq: 06 Dec 2023 10:07

Instrument : MSVOA\_U  
 ClientSampleId :

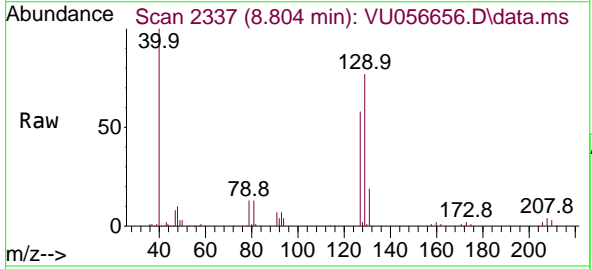


Tgt Ion: 43 Resp: 369495

Ion	Ratio	Lower	Upper
43	100		
58	58.0	48.7	73.1
57	20.6	16.8	25.2
100	12.3	9.9	14.9

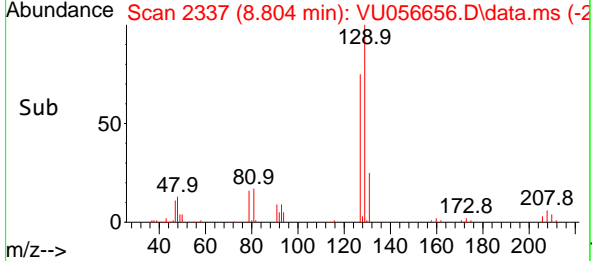
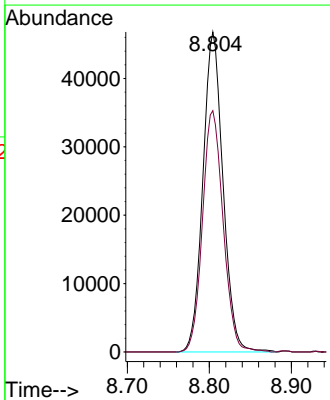


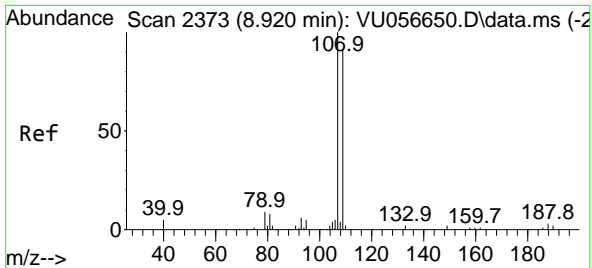
#49  
 Dibromochloromethane  
 Concen: 5.808 ug/L  
 RT: 8.804 min Scan# 2337  
 Delta R.T. -0.000 min  
 Lab File: VU056656.D  
 Acq: 06 Dec 2023 10:07



Tgt Ion: 129 Resp: 79855

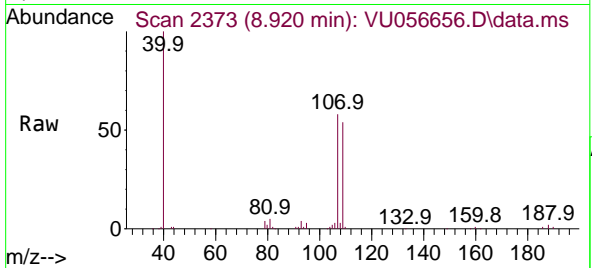
Ion	Ratio	Lower	Upper
129	100		
127	75.4	52.9	98.3



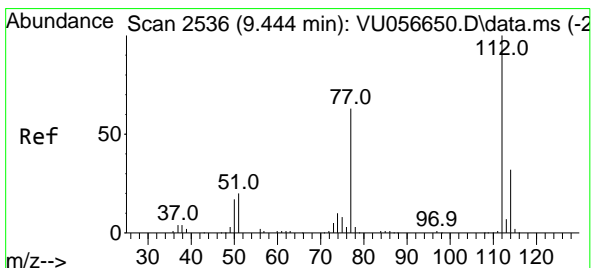
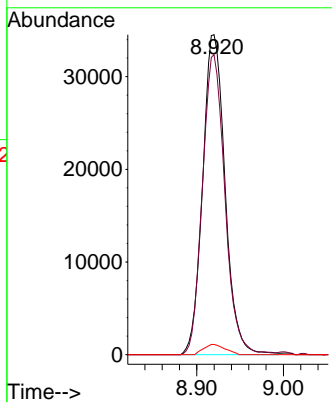
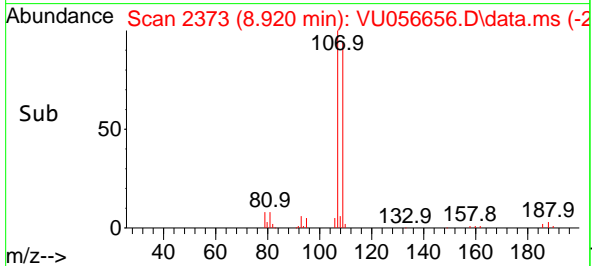


#50  
 1,2-Dibromoethane  
 Concen: 5.439 ug/L  
 RT: 8.920 min Scan# 21  
 Delta R.T. -0.000 min  
 Lab File: VU056656.D  
 Acq: 06 Dec 2023 10:07

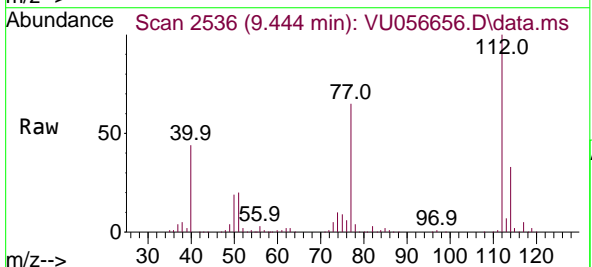
Instrument : MSVOA\_U  
 ClientSampleId :



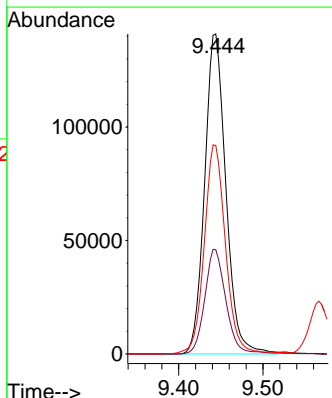
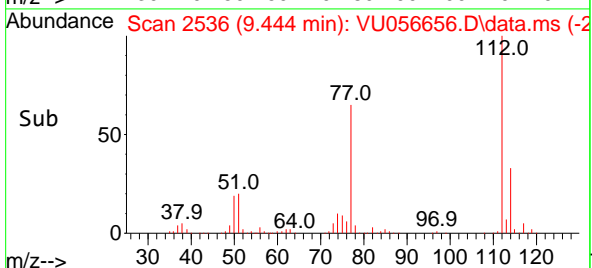
Tgt Ion:107 Resp: 62074  
 Ion Ratio Lower Upper  
 107 100  
 109 93.8 64.2 119.2  
 188 3.2 2.6 4.0

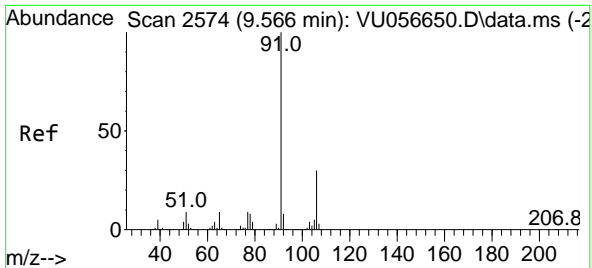


#51  
 Chlorobenzene  
 Concen: 5.338 ug/L  
 RT: 9.444 min Scan# 2536  
 Delta R.T. -0.000 min  
 Lab File: VU056656.D  
 Acq: 06 Dec 2023 10:07



Tgt Ion:112 Resp: 247203  
 Ion Ratio Lower Upper  
 112 100  
 114 32.6 22.5 41.7  
 77 65.1 51.7 77.5

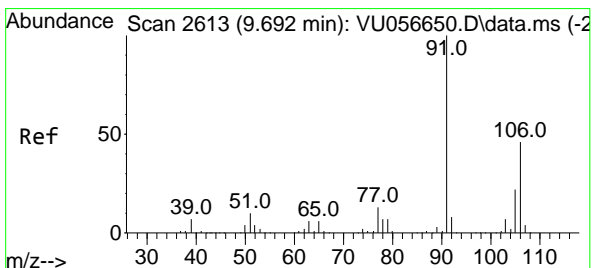
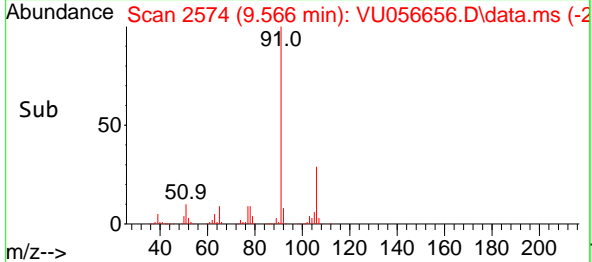
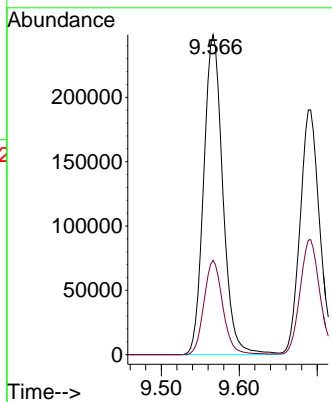
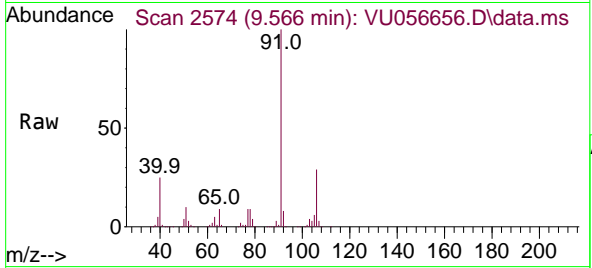




#52  
 Ethylbenzene  
 Concen: 5.298 ug/L  
 RT: 9.566 min Scan# 2574  
 Delta R.T. -0.000 min  
 Lab File: VU056656.D  
 Acq: 06 Dec 2023 10:07

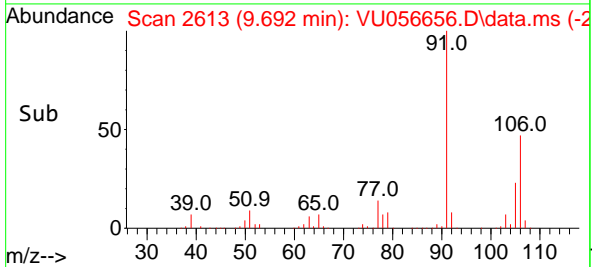
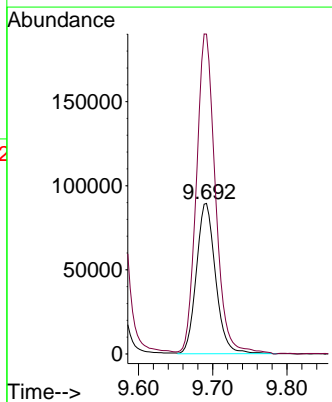
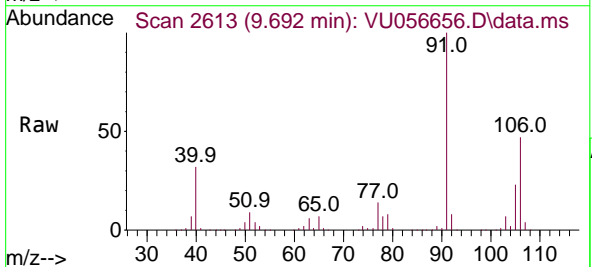
Instrument : MSVOA\_U  
 ClientSampleId :

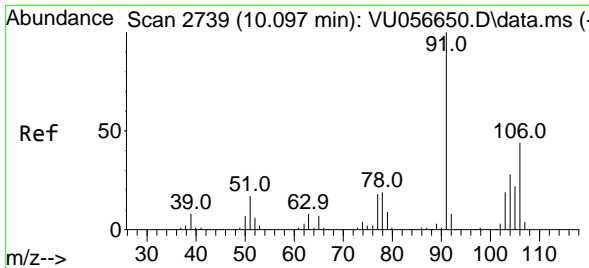
Tgt Ion: 91 Resp: 423972  
 Ion Ratio Lower Upper  
 91 100  
 106 29.5 21.1 39.1



#53  
 m,p-Xylene  
 Concen: 5.451 ug/L  
 RT: 9.692 min Scan# 2613  
 Delta R.T. -0.000 min  
 Lab File: VU056656.D  
 Acq: 06 Dec 2023 10:07

Tgt Ion: 106 Resp: 160362  
 Ion Ratio Lower Upper  
 106 100  
 91 212.5 149.6 277.8

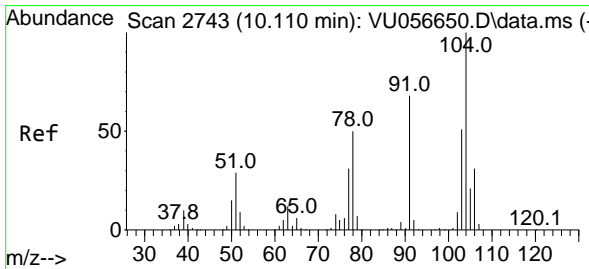
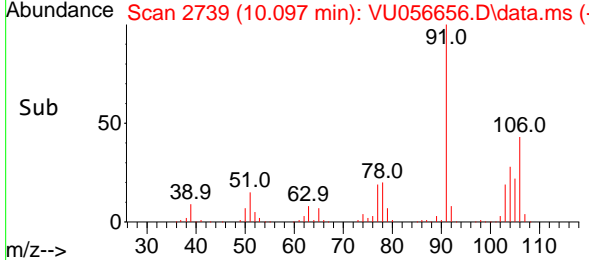
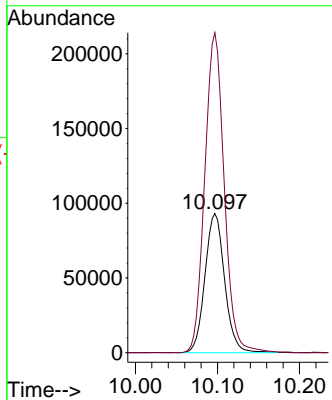
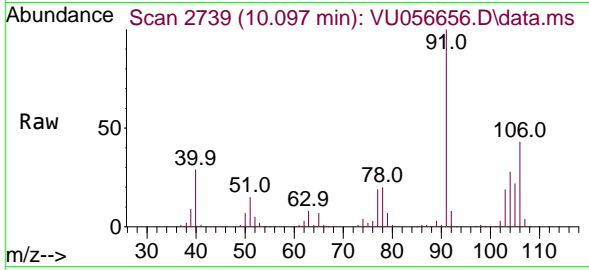




#54  
 o-Xylene  
 Concen: 5.440 ug/L  
 RT: 10.097 min Scan# 2739  
 Delta R.T. -0.000 min  
 Lab File: VU056656.D  
 Acq: 06 Dec 2023 10:07

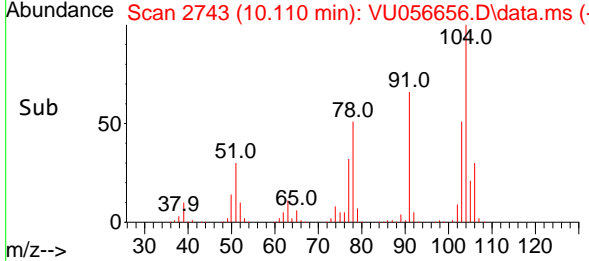
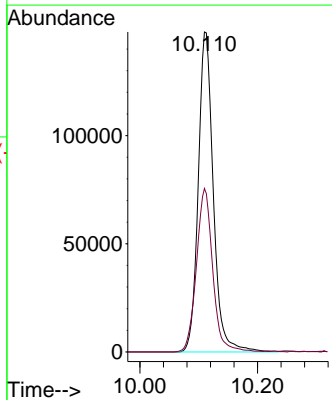
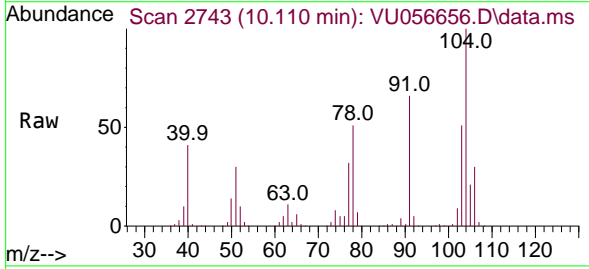
Instrument : MSVOA\_U  
 ClientSampleId :

Tgt Ion:106 Resp: 155473  
 Ion Ratio Lower Upper  
 106 100  
 91 229.9 159.3 295.9

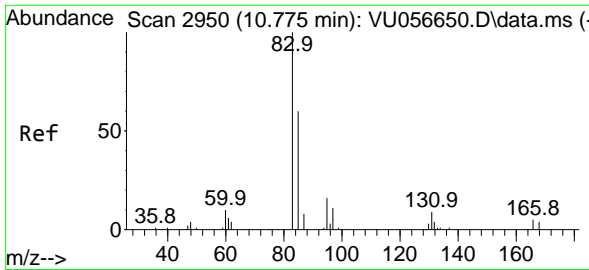


#55  
 Styrene  
 Concen: 5.547 ug/L  
 RT: 10.110 min Scan# 2743  
 Delta R.T. -0.000 min  
 Lab File: VU056656.D  
 Acq: 06 Dec 2023 10:07

Tgt Ion:104 Resp: 263692  
 Ion Ratio Lower Upper  
 104 100  
 78 51.1 34.2 63.6

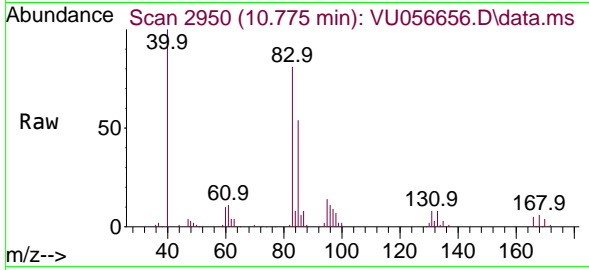




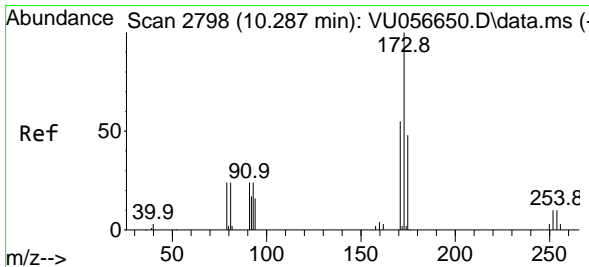
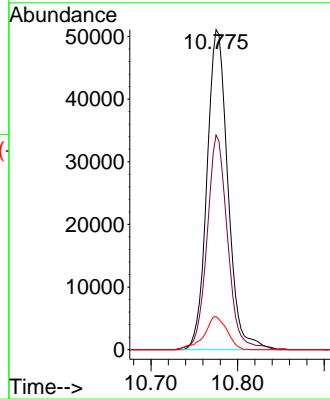
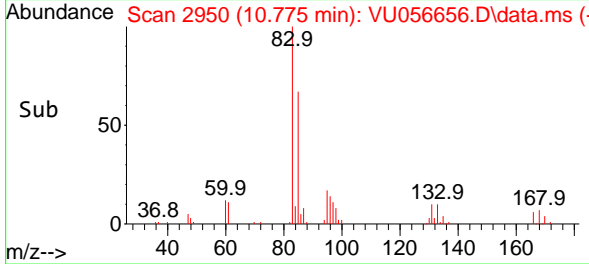


#57  
 1,1,2-Tetrachloroethane  
 Concen: 5.810 ug/L  
 RT: 10.775 min Scan# 2950  
 Delta R.T. -0.000 min  
 Lab File: VU056656.D  
 Acq: 06 Dec 2023 10:07

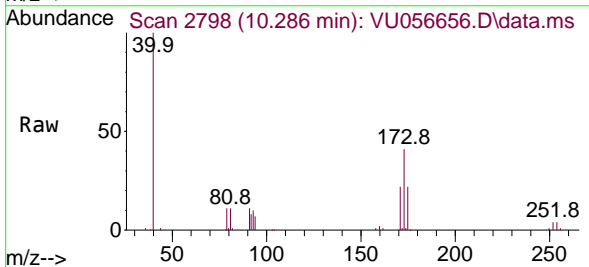
Instrument : MSVOA\_U  
 ClientSampleId :



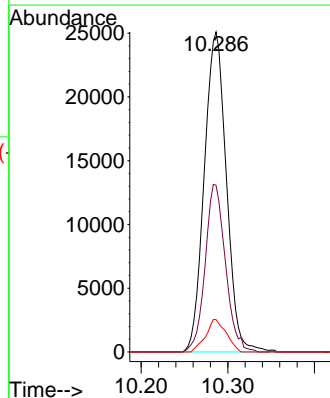
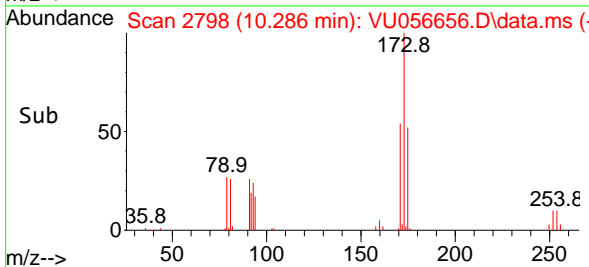
Tgt Ion: 83 Resp: 85772  
 Ion Ratio Lower Upper  
 83 100  
 85 67.0 46.3 86.1  
 131 10.4 6.7 10.1#

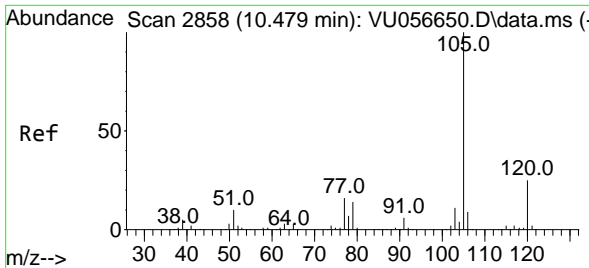


#59  
 Bromoform  
 Concen: 5.793 ug/L  
 RT: 10.286 min Scan# 2798  
 Delta R.T. -0.000 min  
 Lab File: VU056656.D  
 Acq: 06 Dec 2023 10:07



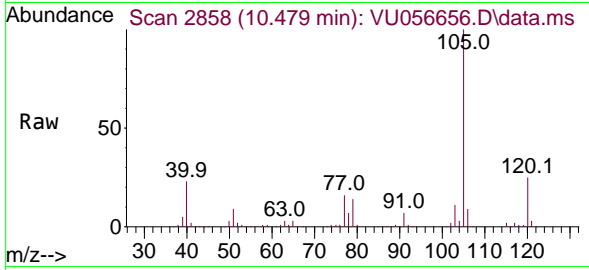
Tgt Ion: 173 Resp: 44504  
 Ion Ratio Lower Upper  
 173 100  
 175 48.2 38.9 58.3  
 254 9.4 6.7 10.1



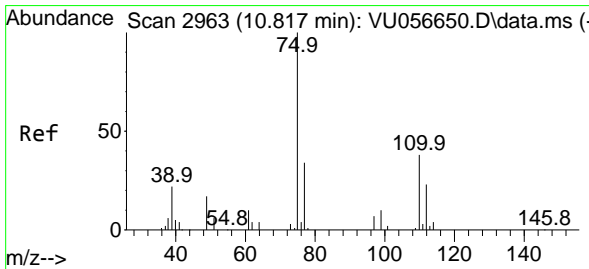
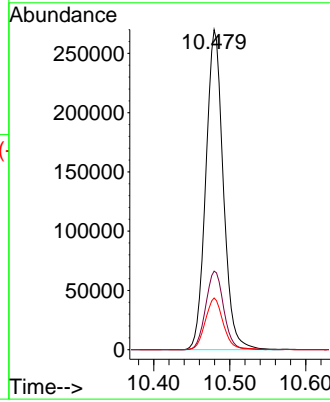
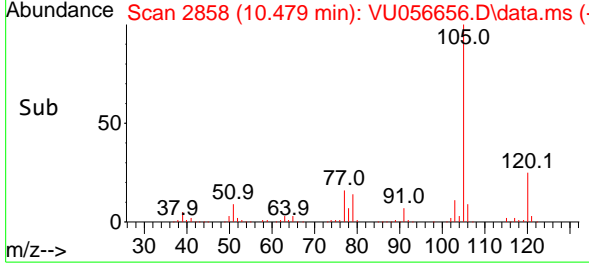


#60  
 Isopropylbenzene  
 Concen: 5.413 ug/L  
 RT: 10.479 min Scan# 21  
 Delta R.T. -0.000 min  
 Lab File: VU056656.D  
 Acq: 06 Dec 2023 10:07

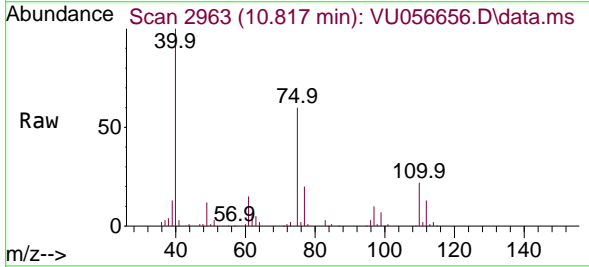
Instrument : MSVOA\_U  
 ClientSampleId :



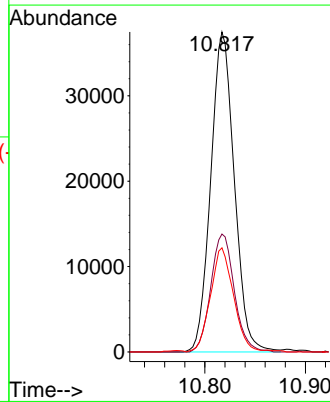
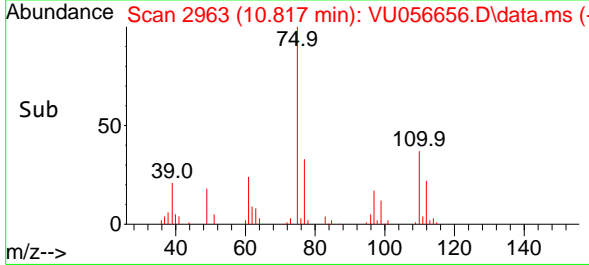
Tgt Ion:105 Resp: 430557  
 Ion Ratio Lower Upper  
 105 100  
 120 25.4 20.4 30.6  
 77 16.6 13.3 19.9

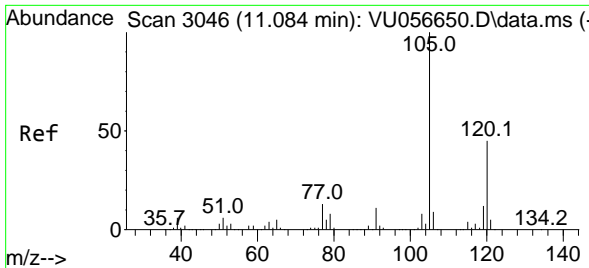


#61  
 1,2,3-Trichloropropane  
 Concen: 5.773 ug/L  
 RT: 10.817 min Scan# 2963  
 Delta R.T. -0.000 min  
 Lab File: VU056656.D  
 Acq: 06 Dec 2023 10:07



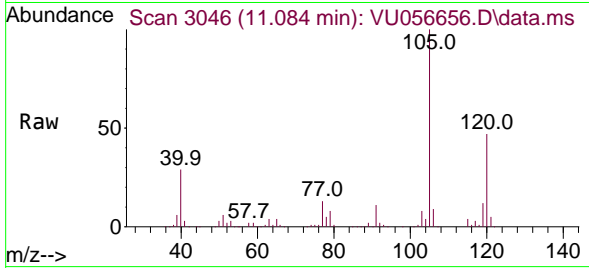
Tgt Ion: 75 Resp: 61093  
 Ion Ratio Lower Upper  
 75 100  
 110 36.8 30.4 45.6  
 77 31.9 27.0 40.6



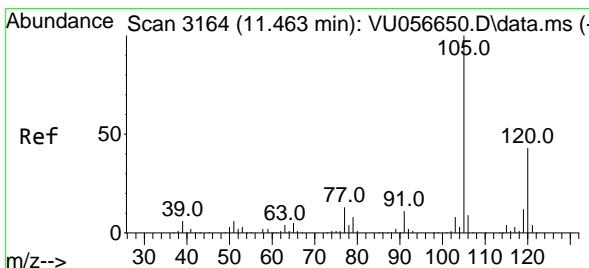
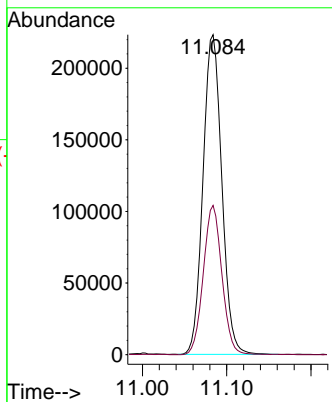
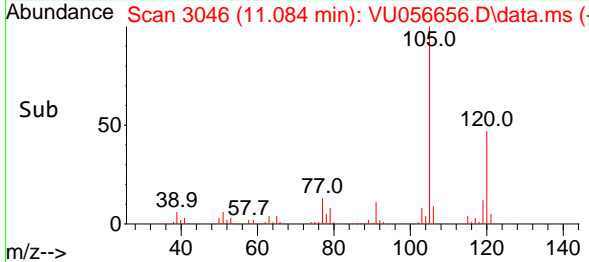


#62  
 1,3,5-Trimethylbenzene  
 Concen: 5.312 ug/L  
 RT: 11.084 min Scan# 3046  
 Delta R.T. -0.000 min  
 Lab File: VU056656.D  
 Acq: 06 Dec 2023 10:07

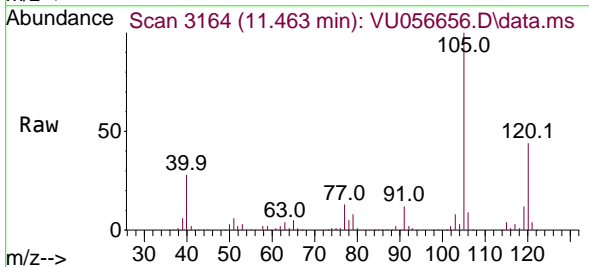
Instrument : MSVOA\_U  
 ClientSampleId :



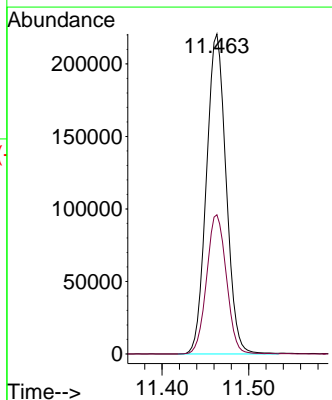
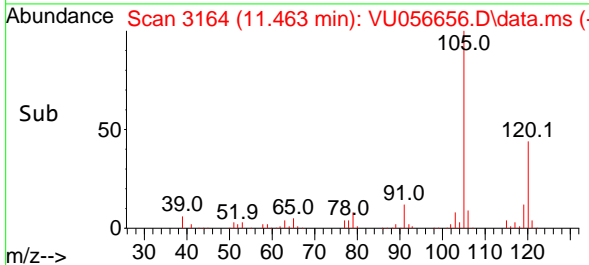
Tgt Ion:105 Resp: 346899  
 Ion Ratio Lower Upper  
 105 100  
 120 46.2 37.2 55.8

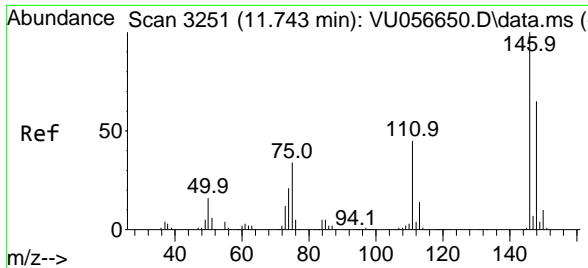


#63  
 1,2,4-Trimethylbenzene  
 Concen: 5.408 ug/L  
 RT: 11.463 min Scan# 3164  
 Delta R.T. -0.000 min  
 Lab File: VU056656.D  
 Acq: 06 Dec 2023 10:07



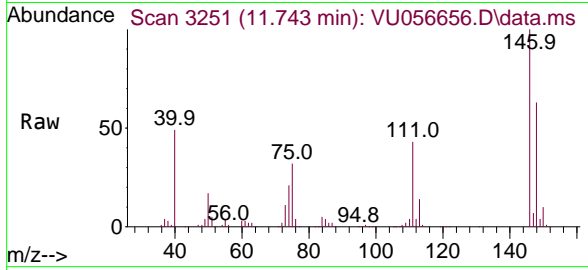
Tgt Ion:105 Resp: 348579  
 Ion Ratio Lower Upper  
 105 100  
 120 43.6 34.0 51.0



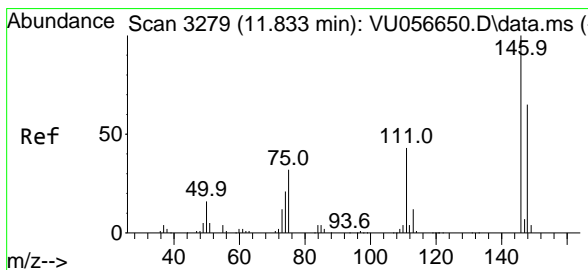
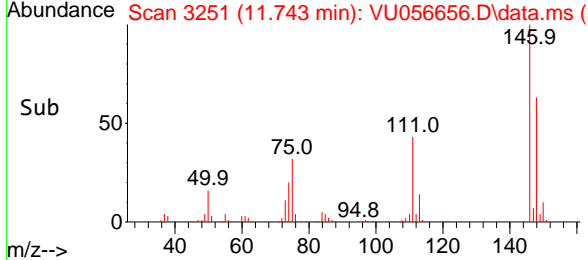
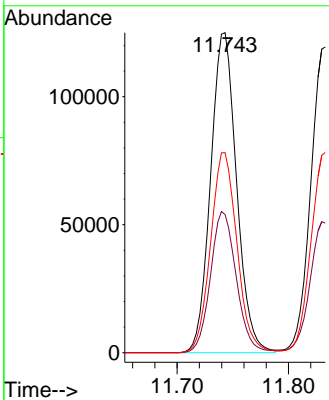


#64  
 1,3-Dichlorobenzene  
 Concen: 5.599 ug/L  
 RT: 11.743 min Scan# 31  
 Delta R.T. -0.000 min  
 Lab File: VU056656.D  
 Acq: 06 Dec 2023 10:07

Instrument :  
 MSVOA\_U  
 ClientSampleId :

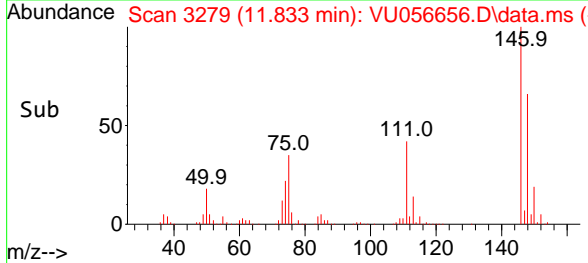
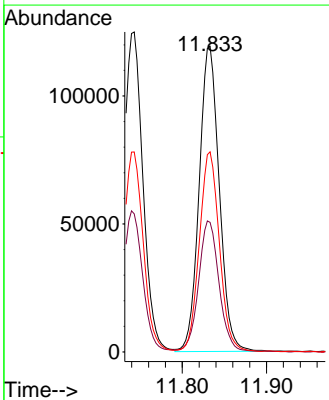
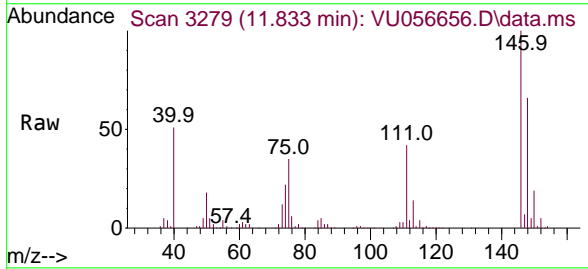


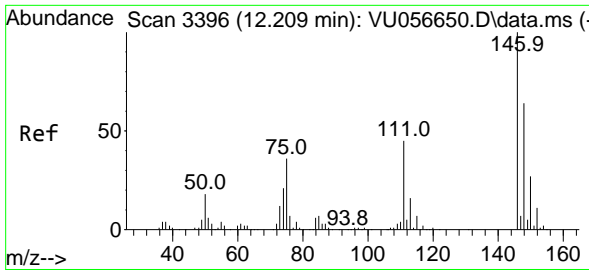
Tgt Ion:146 Resp: 202583  
 Ion Ratio Lower Upper  
 146 100  
 111 43.2 31.1 57.7  
 148 62.5 45.1 83.9



#65  
 1,4-Dichlorobenzene  
 Concen: 5.460 ug/L  
 RT: 11.833 min Scan# 3279  
 Delta R.T. -0.000 min  
 Lab File: VU056656.D  
 Acq: 06 Dec 2023 10:07

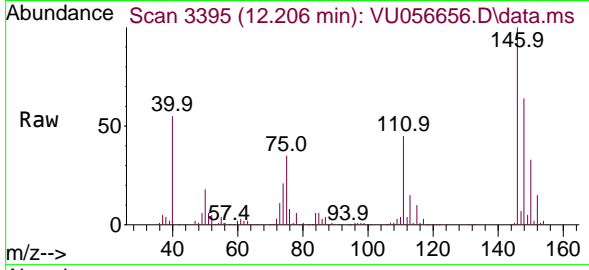
Tgt Ion:146 Resp: 198163  
 Ion Ratio Lower Upper  
 146 100  
 111 42.4 30.5 56.7  
 148 65.5 44.8 83.2



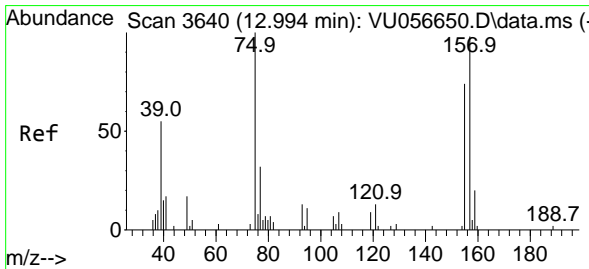
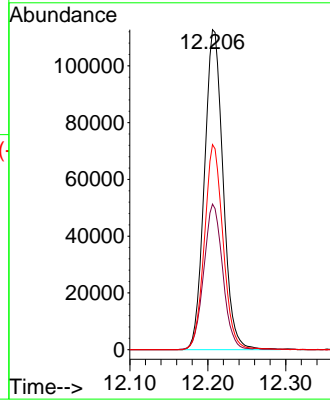
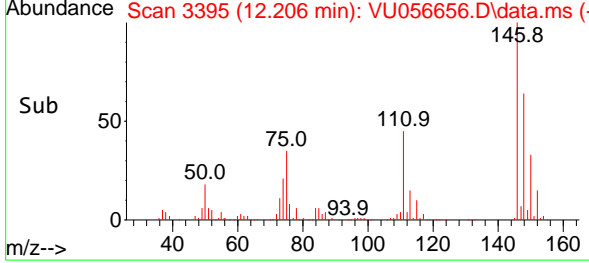


#67  
 1,2-Dichlorobenzene  
 Concen: 5.651 ug/L  
 RT: 12.206 min Scan# 31  
 Delta R.T. -0.003 min  
 Lab File: VU056656.D  
 Acq: 06 Dec 2023 10:07

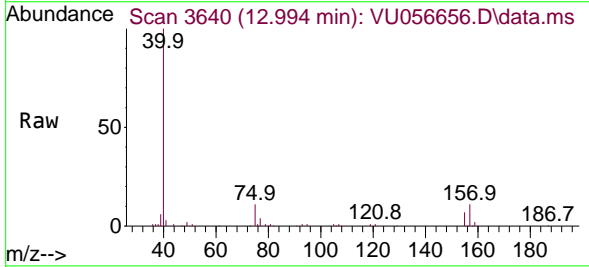
Instrument :  
 MSVOA\_U  
 ClientSampleId :



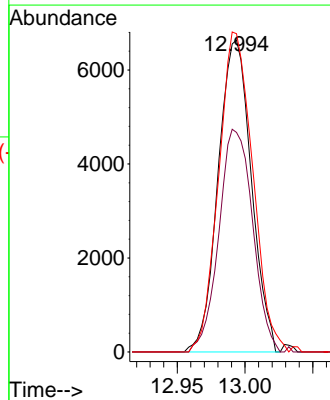
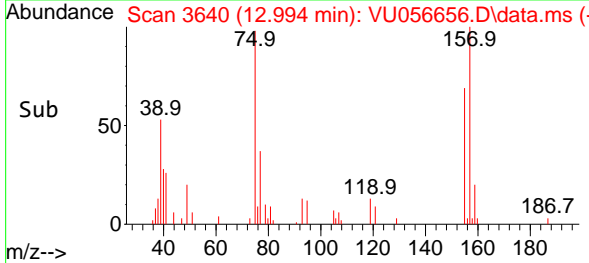
Tgt Ion:146 Resp: 187577  
 Ion Ratio Lower Upper  
 146 100  
 111 45.5 38.3 57.5  
 148 64.1 52.2 78.4

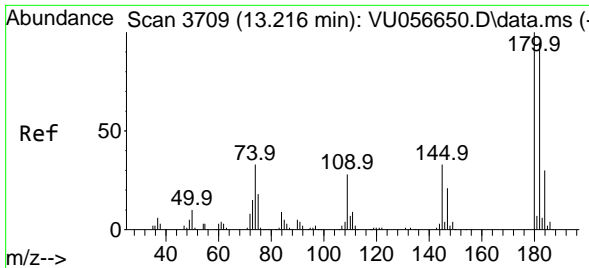


#68  
 1,2-Dibromo-3-chloropropane  
 Concen: 4.995 ug/L  
 RT: 12.994 min Scan# 3640  
 Delta R.T. -0.000 min  
 Lab File: VU056656.D  
 Acq: 06 Dec 2023 10:07



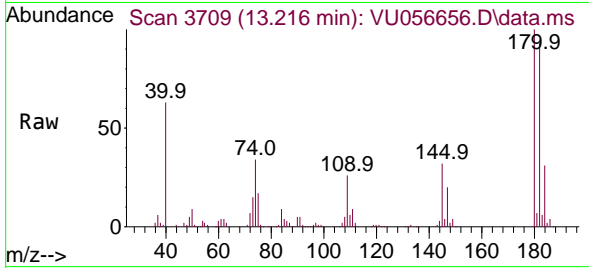
Tgt Ion: 75 Resp: 11290  
 Ion Ratio Lower Upper  
 75 100  
 155 70.4 62.4 93.6  
 157 102.0 80.2 120.2



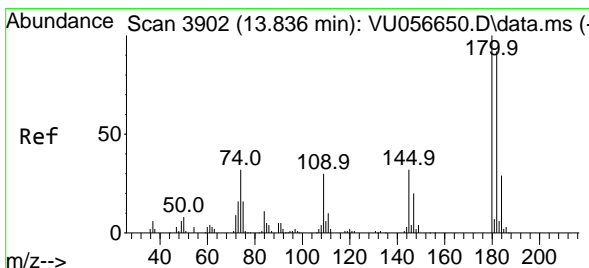
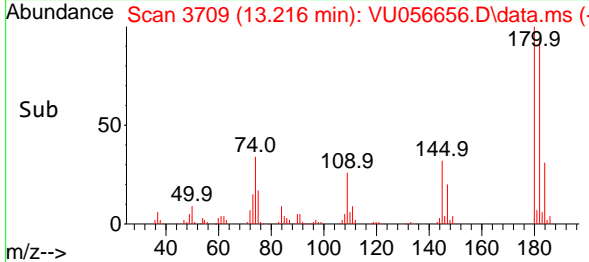
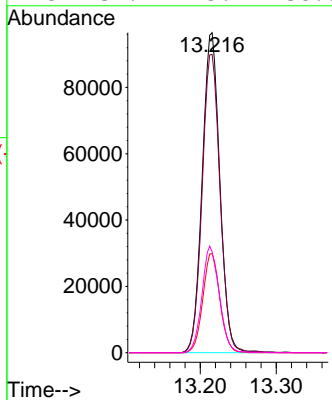


#69  
 1,3,5-Trichlorobenzene  
 Concen: 5.684 ug/L  
 RT: 13.216 min Scan# 31  
 Delta R.T. -0.000 min  
 Lab File: VU056656.D  
 Acq: 06 Dec 2023 10:07

Instrument :  
 MSVOA\_U  
 ClientSampleId :

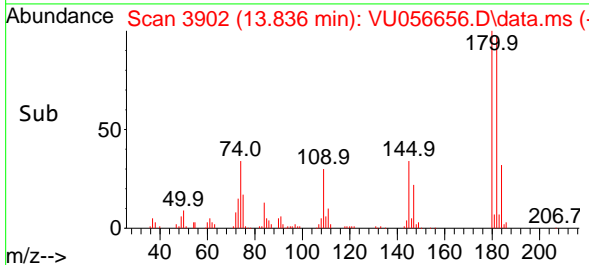
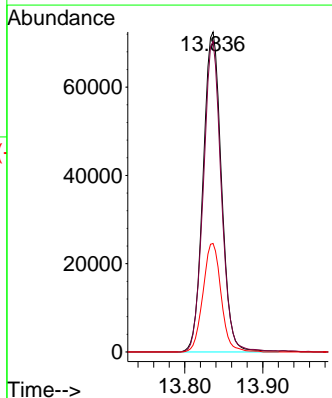
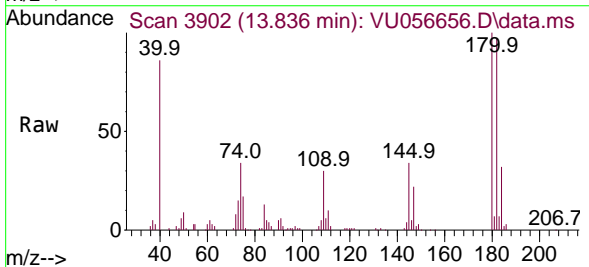


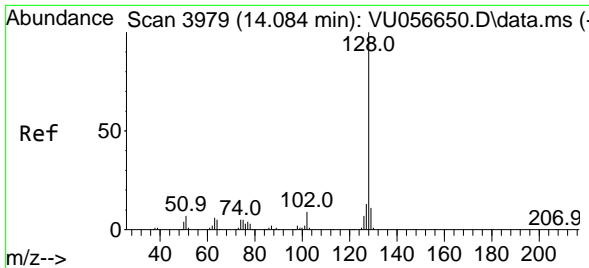
Tgt Ion:180 Resp: 154839  
 Ion Ratio Lower Upper  
 180 100  
 182 94.5 75.1 112.7  
 184 30.1 23.5 35.3  
 145 32.7 25.4 38.0



#70  
 1,2,4-trichlorobenzene  
 Concen: 5.351 ug/L  
 RT: 13.836 min Scan# 3902  
 Delta R.T. -0.000 min  
 Lab File: VU056656.D  
 Acq: 06 Dec 2023 10:07

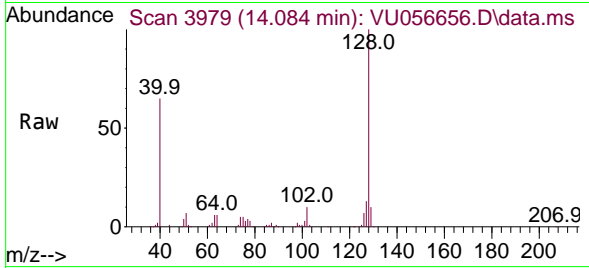
Tgt Ion:180 Resp: 118725  
 Ion Ratio Lower Upper  
 180 100  
 182 94.8 75.4 113.2  
 145 33.5 26.8 40.2





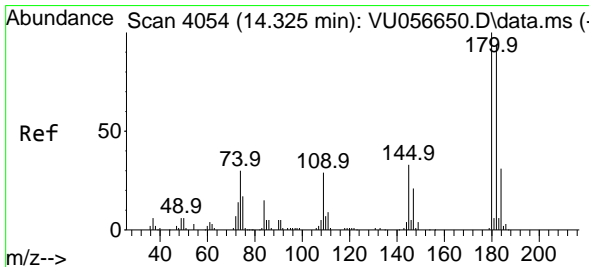
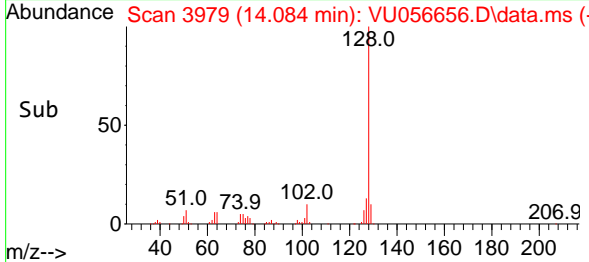
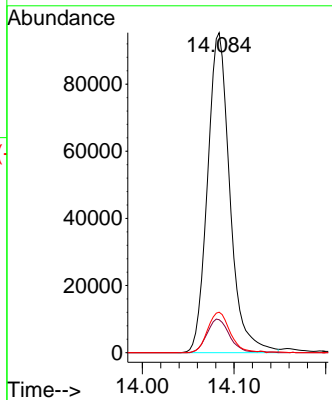
#71  
 Naphthalene  
 Concen: 4.811 ug/L  
 RT: 14.084 min Scan# 3979  
 Delta R.T. -0.000 min  
 Lab File: VU056656.D  
 Acq: 06 Dec 2023 10:07

Instrument : MSVOA\_U  
 ClientSampleId :



Tgt Ion:128 Resp: 161282

Ion	Ratio	Lower	Upper
128	100		
129	10.7	8.6	12.8
127	12.8	10.3	15.5



#72  
 1,2,3-Trichlorobenzene  
 Concen: 5.510 ug/L  
 RT: 14.325 min Scan# 4054  
 Delta R.T. -0.000 min  
 Lab File: VU056656.D  
 Acq: 06 Dec 2023 10:07

Tgt Ion:180 Resp: 100709

Ion	Ratio	Lower	Upper
180	100		
182	93.9	78.6	117.8
145	35.9	29.0	43.6

