

Data Path : Z:\voasrv\HPCHEM1\MSVOA_U\Data\VU120722\
 Data File : VU052222.D
 Acq On : 08 Dec 2022 02:03
 Operator : JC/MD
 Sample : N5918-04
 Misc : 25.0mL/MSVOA_U/WATER
 ALS Vial : 34 Sample Multiplier: 1

Instrument :
 MSVOA_U
 ClientSampleId :
 C0EG0

Quant Time: Dec 08 04:34:36 2022
 Quant Method : Z:\voasrv\HPCHEM1\MSVOA_U\Method\SFAMUTR111822WMA.M
 Quant Title : TRACE VOA SFAM1.0
 QLast Update : Thu Dec 08 04:19:43 2022
 Response via : Initial Calibration

Compound	R.T.	QIon	Response	Conc	Units	Dev(Min)

Internal Standards						
1) 1,4-Difluorobenzene	6.250	114	211910	5.000	ug/L	0.00
28) Chlorobenzene-d5	9.417	117	221586	5.000	ug/L	0.00
58) 1,4-Dichlorobenzene-d4	11.809	152	90076	5.000	ug/L	0.00
System Monitoring Compounds						
4) Vinyl Chloride-d3	1.600	65	81509	3.954	ug/L	0.00
Spiked Amount	5.000	Range 40 - 130	Recovery	=	79.000%	
7) Chloroethane-d5	1.915	69	73905	4.616	ug/L	0.00
Spiked Amount	5.000	Range 65 - 130	Recovery	=	92.400%	
11) 1,1-Dichloroethene-d2	2.568	65	31756	4.298	ug/L	0.00
Spiked Amount	5.000	Range 60 - 125	Recovery	=	86.000%	
20) 2-Butanone-d5	4.636	46	221392	59.255	ug/L	0.00
Spiked Amount	50.000	Range 40 - 130	Recovery	=	118.500%	
24) Chloroform-d	5.060	84	158994	5.250	ug/L	0.00
Spiked Amount	5.000	Range 70 - 125	Recovery	=	105.000%	
26) 1,2-Dichloroethane-d4	5.700	65	80808	5.282	ug/L	0.00
Spiked Amount	5.000	Range 70 - 130	Recovery	=	105.600%	
32) Benzene-d6	5.726	84	304131	4.623	ug/L	0.00
Spiked Amount	5.000	Range 70 - 125	Recovery	=	92.400%	
36) 1,2-Dichloropropane-d6	6.690	67	103925	5.105	ug/L	0.00
Spiked Amount	5.000	Range 60 - 140	Recovery	=	102.000%	
41) Toluene-d8	7.896	98	228706	3.842	ug/L	0.00
Spiked Amount	5.000	Range 70 - 130	Recovery	=	76.800%	
43) trans-1,3-Dichloroprop...	8.179	79	30626	4.128	ug/L	0.00
Spiked Amount	5.000	Range 55 - 130	Recovery	=	82.600%	
46) 2-Hexanone-d5	8.632	63	155655	49.508	ug/L	0.00
Spiked Amount	50.000	Range 45 - 130	Recovery	=	99.020%	
56) 1,1,2,2-Tetrachloroeth...	10.751	84	90691	5.138	ug/L	0.00
Spiked Amount	5.000	Range 65 - 120	Recovery	=	102.800%	
66) 1,2-Dichlorobenzene-d4	12.192	152	87410	5.069	ug/L	0.00
Spiked Amount	5.000	Range 80 - 120	Recovery	=	101.400%	

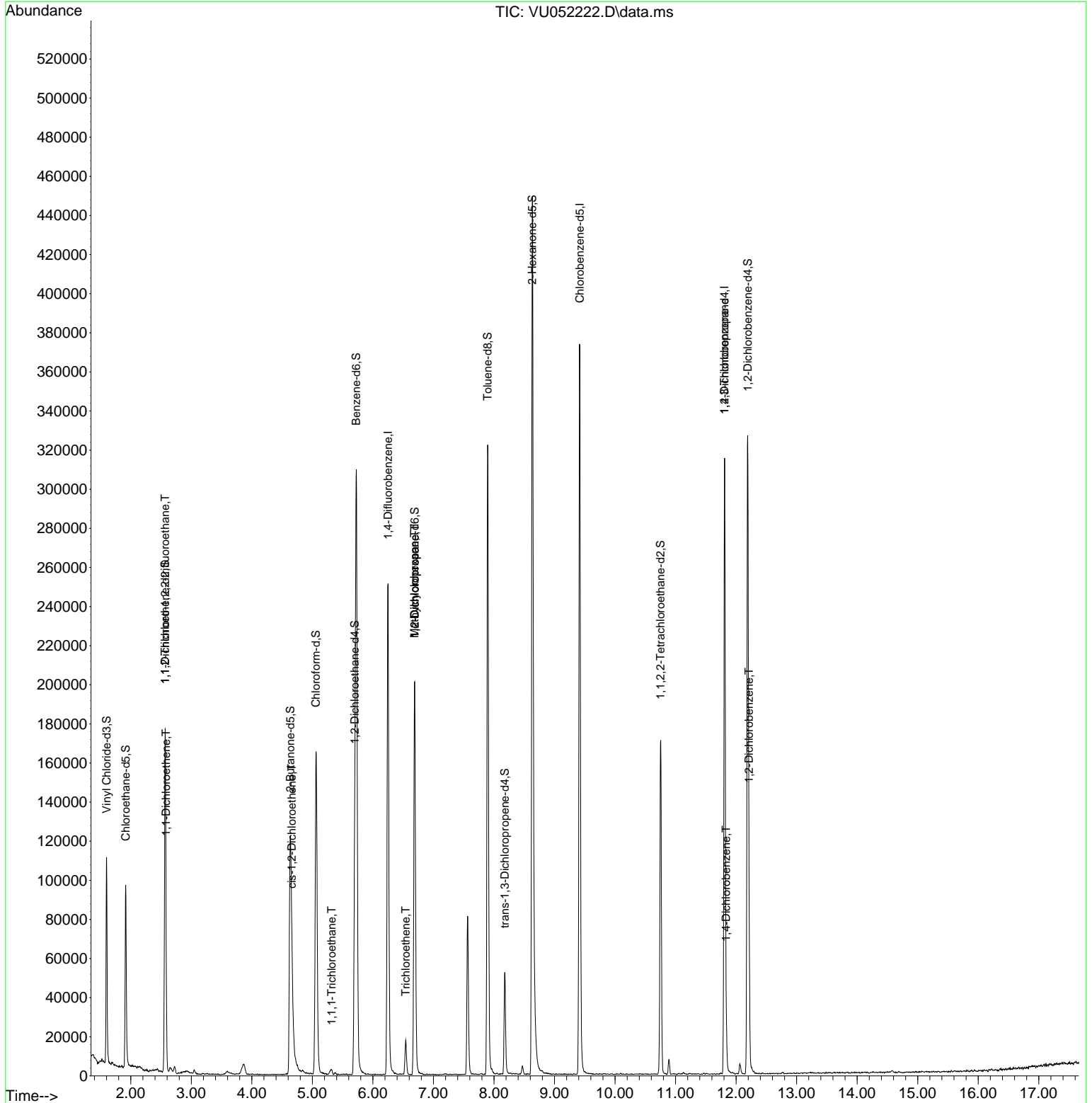
Target Compounds						Qvalue
10) 1,1,2-Trichloro-1,2,2-...	2.568	101	1022	0.066	ug/L #	20
12) 1,1-Dichloroethene	2.581	96	6127	0.399	ug/L #	1
22) cis-1,2-Dichloroethene	4.661	96	4102	0.237	ug/L	97
29) 1,1,1-Trichloroethane	5.317	97	1962	0.080	ug/L #	86
34) Trichloroethene	6.542	95	6010	0.334	ug/L	92
35) Methylcyclohexane	6.687	83	22210	0.858	ug/L #	19
37) 1,2-Dichloropropane	6.690	63	10394	0.557	ug/L #	88
61) 1,2,3-Trichloropropane	11.809	75	13046	1.265	ug/L #	61
65) 1,4-Dichlorobenzene	11.835	146	8465	0.294	ug/L	96
67) 1,2-Dichlorobenzene	12.211	146	32480	1.167	ug/L	96

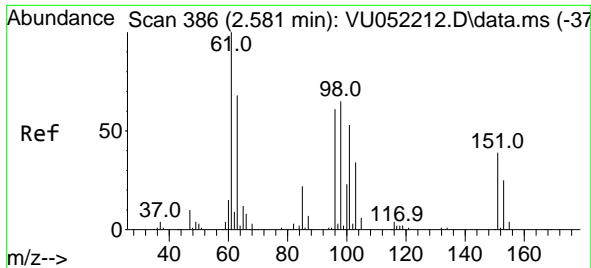
(#) = qualifier out of range (m) = manual integration (+) = signals summed

Data Path : Z:\voasrv\HPCHEM1\MSVOA_U\Data\VU120722\
 Data File : VU052222.D
 Acq On : 08 Dec 2022 02:03
 Operator : JC/MD
 Sample : N5918-04
 Misc : 25.0mL/MSVOA_U/WATER
 ALS Vial : 34 Sample Multiplier: 1

Instrument :
 MSVOA_U
 ClientSampleId :
 COEG0

Quant Time: Dec 08 04:34:36 2022
 Quant Method : Z:\voasrv\HPCHEM1\MSVOA_U\Method\SFAMUTR111822WMA.M
 Quant Title : TRACE VOA SFAM1.0
 QLast Update : Thu Dec 08 04:19:43 2022
 Response via : Initial Calibration

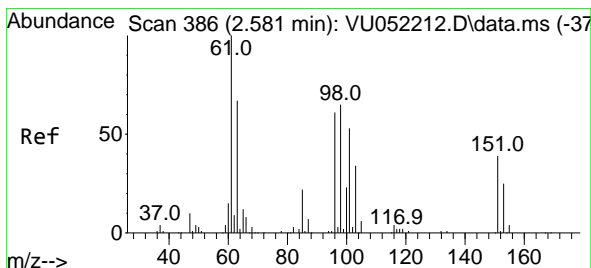
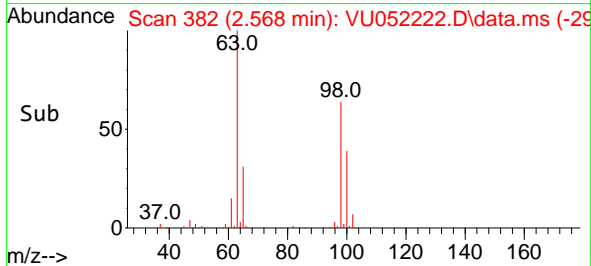
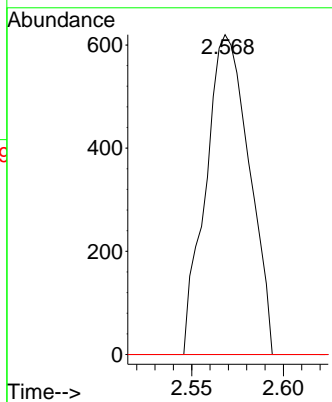
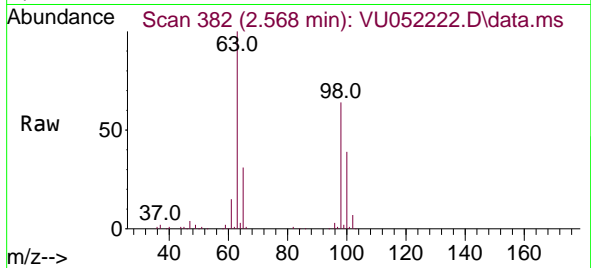




#10
 1,1,2-Trichloro-1,2,2-trifluoroethane
 Concen: 0.066 ug/L
 RT: 2.568 min Scan# 382
 Delta R.T. -0.013 min
 Lab File: VU052222.D
 Acq: 08 Dec 2022 02:03

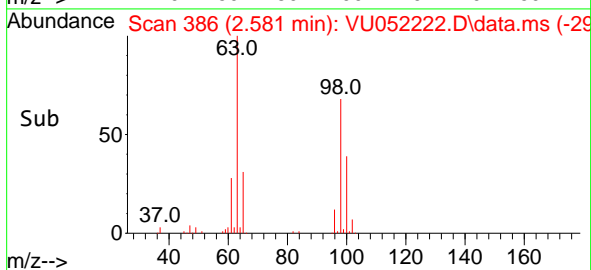
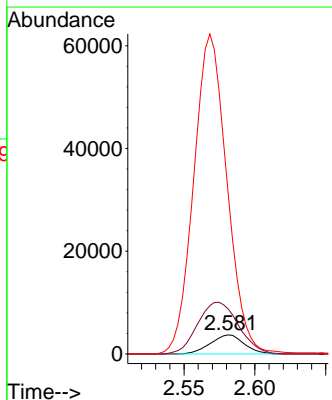
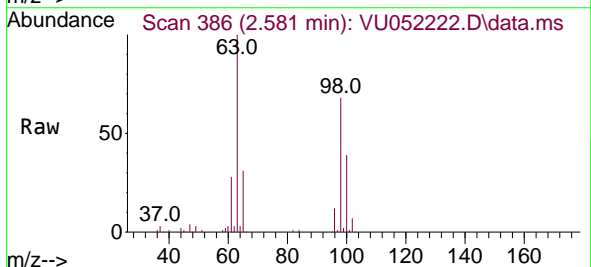
Instrument :
 MSVOA_U
 ClientSampleId :
 C0EG0

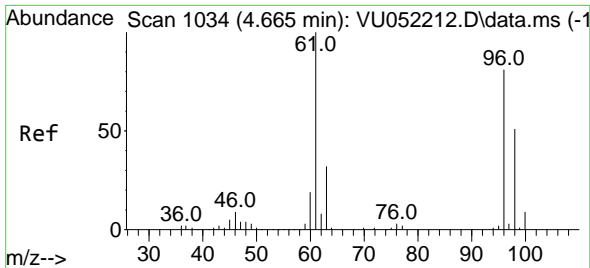
Tgt Ion	Resp	Lower	Upper
101	1022		
101	100		
85	0.0	33.8	50.6#
151	0.0	58.6	88.0#



#12
 1,1-Dichloroethene
 Concen: 0.399 ug/L
 RT: 2.581 min Scan# 386
 Delta R.T. -0.000 min
 Lab File: VU052222.D
 Acq: 08 Dec 2022 02:03

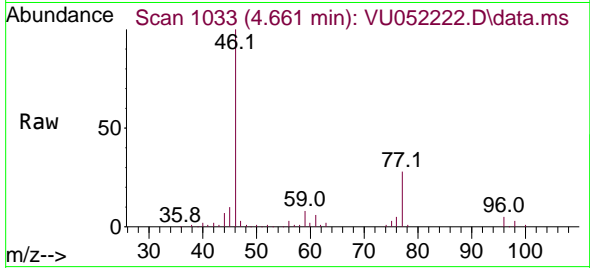
Tgt Ion	Resp	Lower	Upper
96	6127		
96	100		
61	236.4	114.8	213.2#
63	842.6	93.7	174.1#





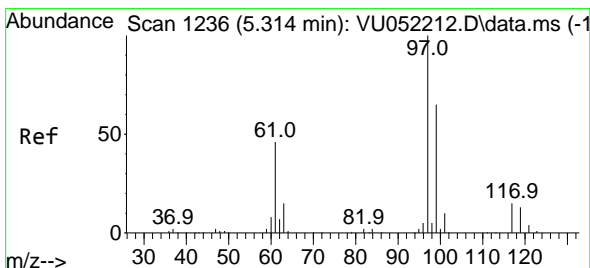
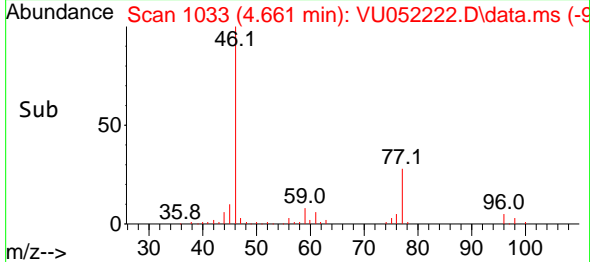
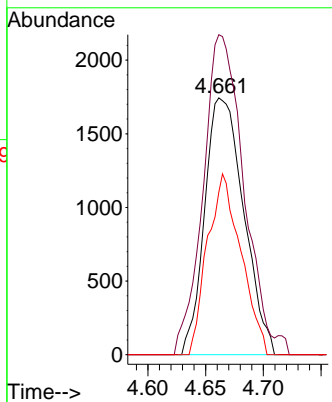
#22
 cis-1,2-Dichloroethene
 Concen: 0.237 ug/L
 RT: 4.661 min Scan# 1033
 Delta R.T. -0.003 min
 Lab File: VU052222.D
 Acq: 08 Dec 2022 02:03

Instrument : MSVOA_U
 ClientSampleId : C0EG0

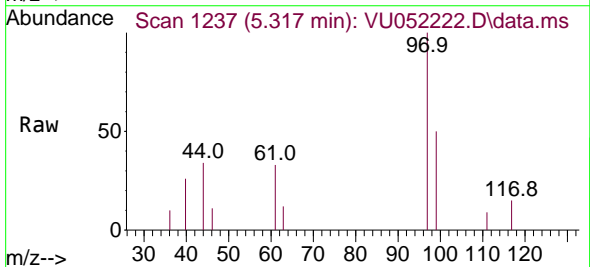


Tgt Ion: 96 Resp: 4102

Ion	Ratio	Lower	Upper
96	100		
61	124.6	85.1	158.1
98	63.3	42.8	79.6

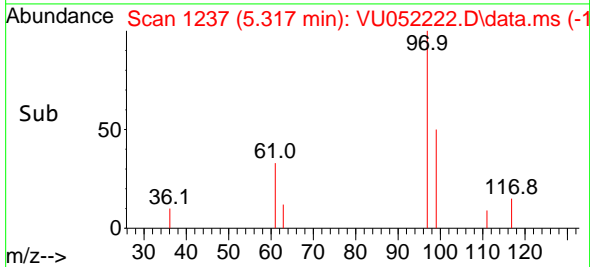
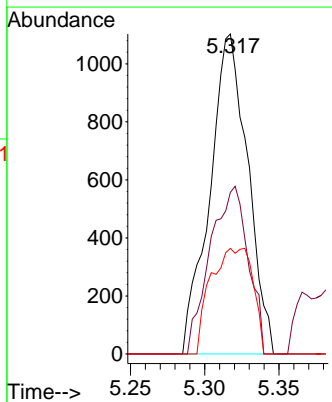


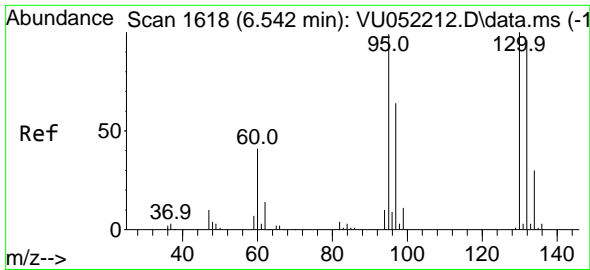
#29
 1,1,1-Trichloroethane
 Concen: 0.080 ug/L
 RT: 5.317 min Scan# 1237
 Delta R.T. 0.003 min
 Lab File: VU052222.D
 Acq: 08 Dec 2022 02:03



Tgt Ion: 97 Resp: 1962

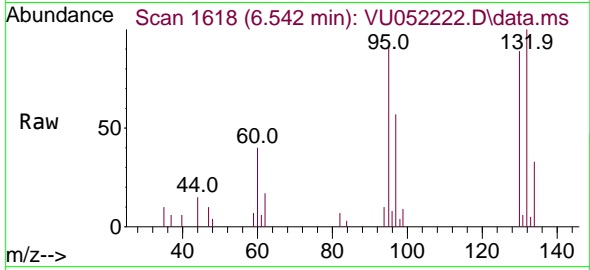
Ion	Ratio	Lower	Upper
97	100		
99	52.6	51.0	76.6
61	36.5	36.9	55.3



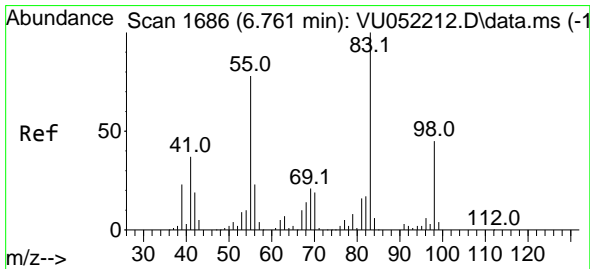
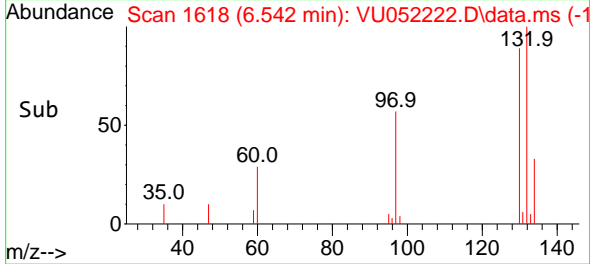
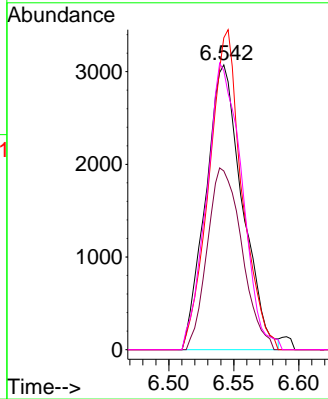


#34
 Trichloroethene
 Concen: 0.334 ug/L
 RT: 6.542 min Scan# 1618
 Delta R.T. -0.000 min
 Lab File: VU052222.D
 Acq: 08 Dec 2022 02:03

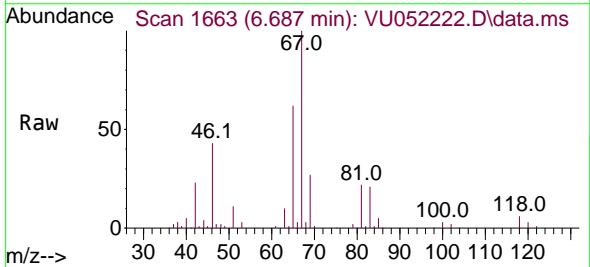
Instrument : MSVOA_U
 ClientSampleId : C0EG0



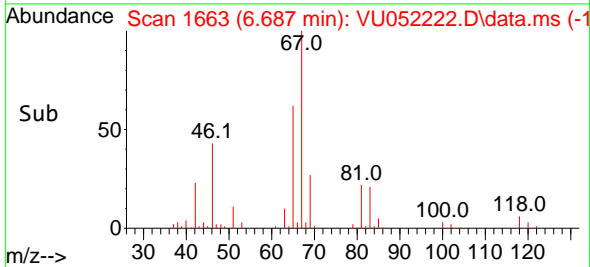
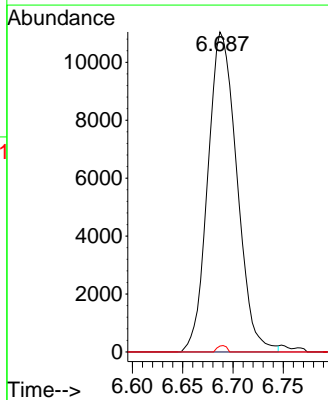
Tgt Ion: 95 Resp: 6010
 Ion Ratio Lower Upper
 95 100
 97 62.7 43.7 81.1
 132 109.5 64.3 119.3
 130 98.0 67.3 124.9

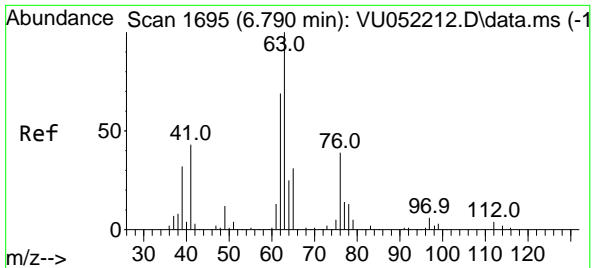


#35
 Methylcyclohexane
 Concen: 0.858 ug/L
 RT: 6.687 min Scan# 1663
 Delta R.T. -0.074 min
 Lab File: VU052222.D
 Acq: 08 Dec 2022 02:03



Tgt Ion: 83 Resp: 22210
 Ion Ratio Lower Upper
 83 100
 55 0.0 60.8 91.2#
 98 0.6 35.1 52.7#

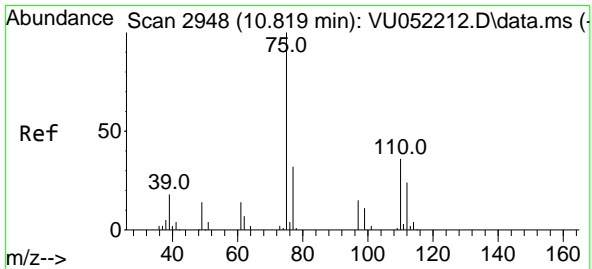
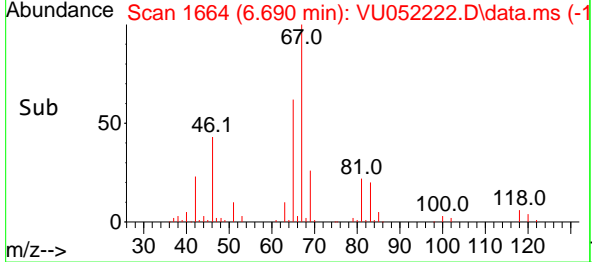
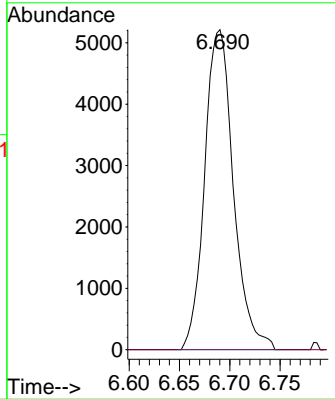
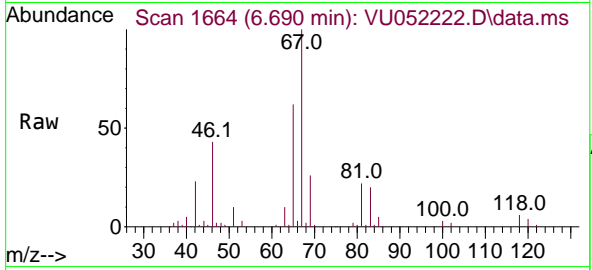




#37
 1,2-Dichloropropane
 Concen: 0.557 ug/L
 RT: 6.690 min Scan# 11
 Delta R.T. -0.100 min
 Lab File: VU052222.D
 Acq: 08 Dec 2022 02:03

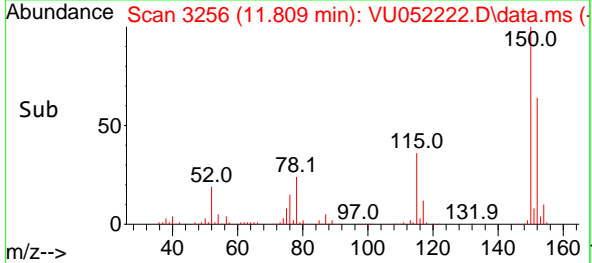
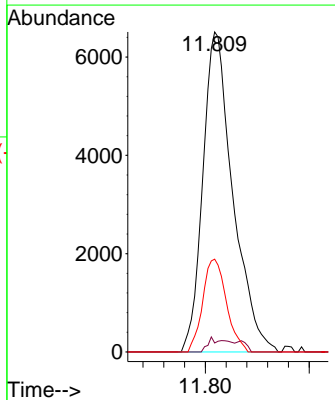
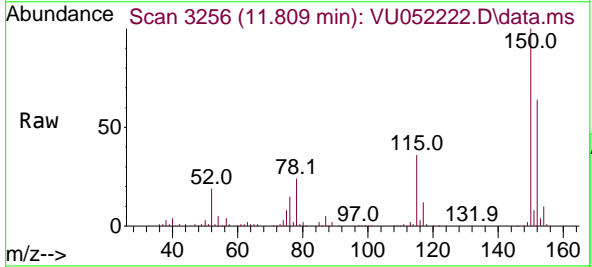
Instrument : MSVOA_U
 ClientSampleId : C0EG0

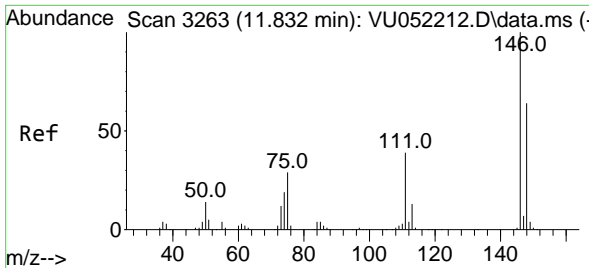
Tgt Ion: 63 Resp: 10394
 Ion Ratio Lower Upper
 63 100
 112 0.0 3.3 4.9#



#61
 1,2,3-Trichloropropane
 Concen: 1.265 ug/L
 RT: 11.809 min Scan# 3256
 Delta R.T. 0.990 min
 Lab File: VU052222.D
 Acq: 08 Dec 2022 02:03

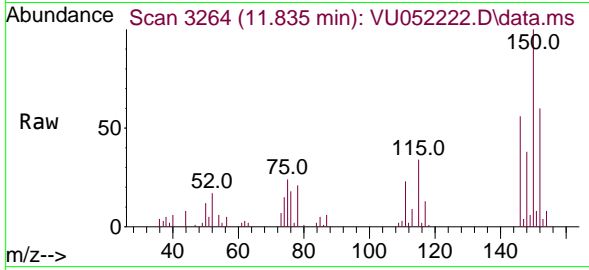
Tgt Ion: 75 Resp: 13046
 Ion Ratio Lower Upper
 75 100
 110 1.4 28.3 42.5#
 77 22.8 26.2 39.2#



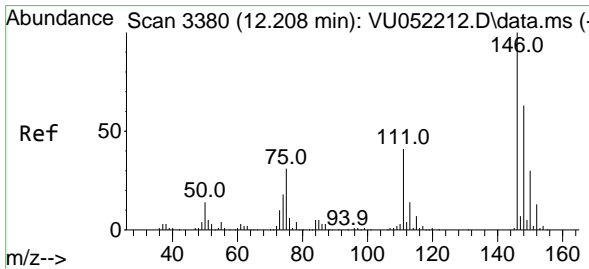
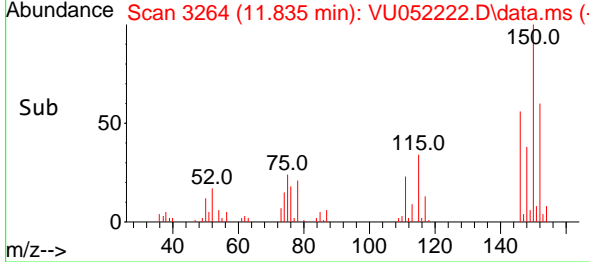
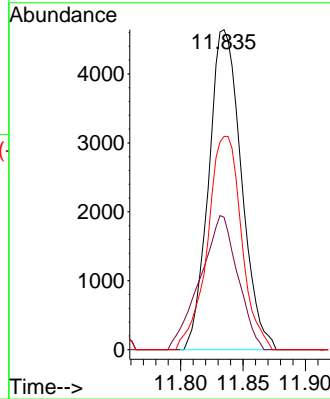


#65
 1,4-Dichlorobenzene
 Concen: 0.294 ug/L
 RT: 11.835 min Scan# 318
 Delta R.T. 0.003 min
 Lab File: VU052222.D
 Acq: 08 Dec 2022 02:03

Instrument :
 MSVOA_U
 ClientSampleId :
 C0EG0



Tgt Ion:146 Resp: 8465
 Ion Ratio Lower Upper
 146 100
 111 41.4 26.9 50.1
 148 66.6 45.1 83.7



#67
 1,2-Dichlorobenzene
 Concen: 1.167 ug/L
 RT: 12.211 min Scan# 3381
 Delta R.T. 0.003 min
 Lab File: VU052222.D
 Acq: 08 Dec 2022 02:03

Tgt Ion:146 Resp: 32480
 Ion Ratio Lower Upper
 146 100
 111 37.2 32.7 49.1
 148 60.5 50.6 75.8

