

Data Path : Z:\voasrv\HPCHEM1\MSVOA_U\Data\VU120722\
 Data File : VU052226.D
 Acq On : 08 Dec 2022 03:41
 Operator : JC/MD
 Sample : N5918-08
 Misc : 25.0mL/MSVOA_U/WATER
 ALS Vial : 38 Sample Multiplier: 1

Instrument :
 MSVOA_U
 ClientSampleId :
 C0EH2

Quant Time: Dec 08 04:35:24 2022
 Quant Method : Z:\voasrv\HPCHEM1\MSVOA_U\Method\SFAMUTR111822WMA.M
 Quant Title : TRACE VOA SFAM1.0
 QLast Update : Thu Dec 08 04:19:43 2022
 Response via : Initial Calibration

Compound	R.T.	QIon	Response	Conc	Units	Dev(Min)

Internal Standards						
1) 1,4-Difluorobenzene	6.247	114	198467	5.000	ug/L	0.00
28) Chlorobenzene-d5	9.417	117	209230	5.000	ug/L	0.00
58) 1,4-Dichlorobenzene-d4	11.809	152	88092	5.000	ug/L	0.00
System Monitoring Compounds						
4) Vinyl Chloride-d3	1.600	65	78763	4.080	ug/L	0.00
Spiked Amount	5.000	Range 40 - 130	Recovery	=	81.600%	
7) Chloroethane-d5	1.915	69	69565	4.639	ug/L	0.00
Spiked Amount	5.000	Range 65 - 130	Recovery	=	92.800%	
11) 1,1-Dichloroethene-d2	2.568	65	30466	4.403	ug/L	0.00
Spiked Amount	5.000	Range 60 - 125	Recovery	=	88.000%	
20) 2-Butanone-d5	4.642	46	207959	59.429	ug/L	0.00
Spiked Amount	50.000	Range 40 - 130	Recovery	=	118.860%	
24) Chloroform-d	5.060	84	146894	5.179	ug/L	0.00
Spiked Amount	5.000	Range 70 - 125	Recovery	=	103.600%	
26) 1,2-Dichloroethane-d4	5.700	65	76519	5.341	ug/L	0.00
Spiked Amount	5.000	Range 70 - 130	Recovery	=	106.800%	
32) Benzene-d6	5.726	84	288476	4.644	ug/L	0.00
Spiked Amount	5.000	Range 70 - 125	Recovery	=	92.800%	
36) 1,2-Dichloropropane-d6	6.687	67	98569	5.128	ug/L	0.00
Spiked Amount	5.000	Range 60 - 140	Recovery	=	102.600%	
41) Toluene-d8	7.896	98	210661	3.748	ug/L	0.00
Spiked Amount	5.000	Range 70 - 130	Recovery	=	75.000%	
43) trans-1,3-Dichloroprop...	8.179	79	27317	3.900	ug/L	0.00
Spiked Amount	5.000	Range 55 - 130	Recovery	=	78.000%	
46) 2-Hexanone-d5	8.635	63	141146	47.544	ug/L	0.00
Spiked Amount	50.000	Range 45 - 130	Recovery	=	95.080%	
56) 1,1,2,2-Tetrachloroeth...	10.754	84	87473	5.248	ug/L	0.00
Spiked Amount	5.000	Range 65 - 120	Recovery	=	105.000%	
66) 1,2-Dichlorobenzene-d4	12.192	152	84322	5.000	ug/L	0.00
Spiked Amount	5.000	Range 80 - 120	Recovery	=	100.000%	

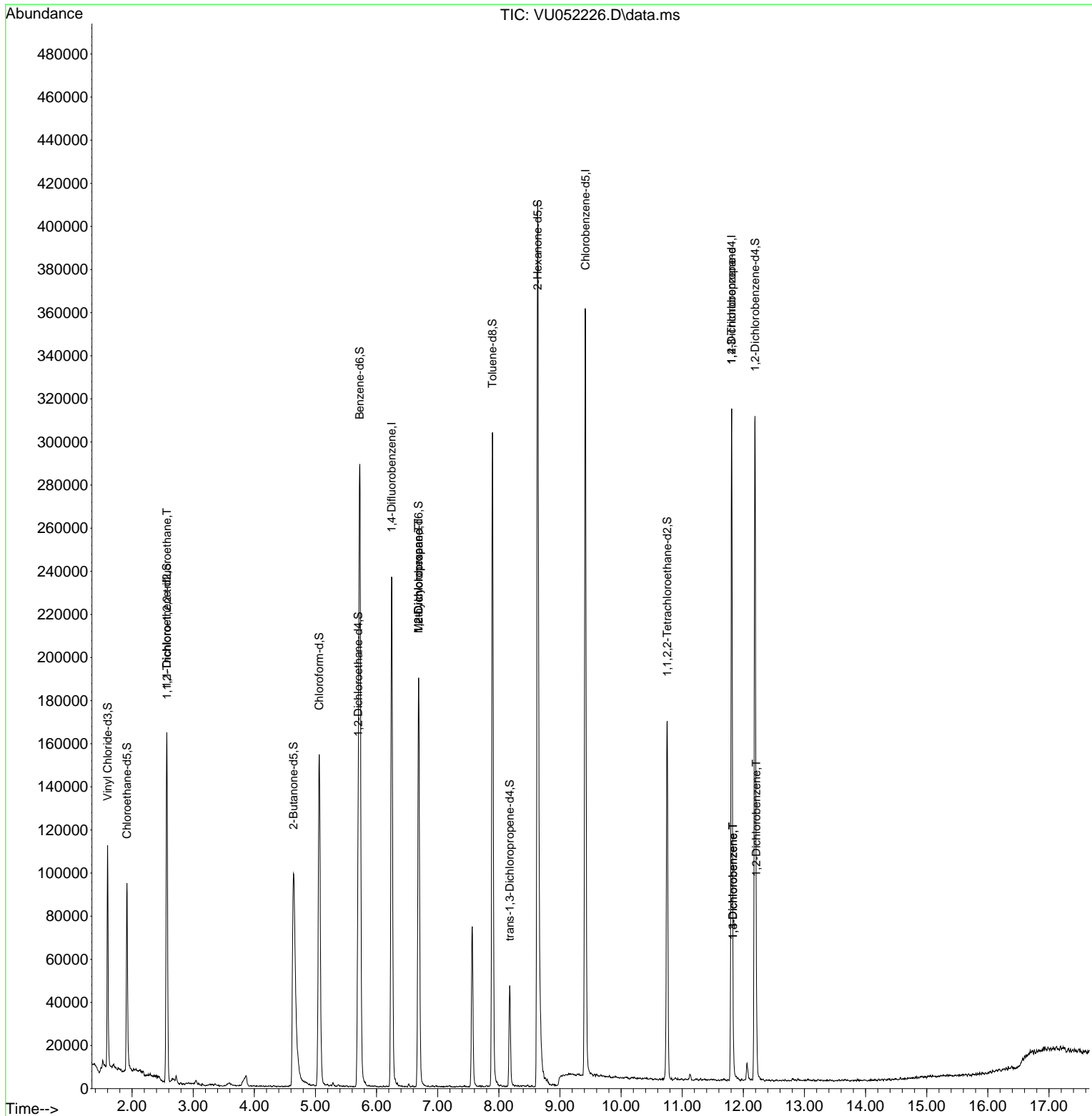
Target Compounds						Qvalue
10) 1,1,2-Trichloro-1,2,2-...	2.571	101	886	0.061	ug/L #	20
35) Methylcyclohexane	6.687	83	21355	0.874	ug/L #	20
37) 1,2-Dichloropropane	6.687	63	9978	0.566	ug/L #	88
61) 1,2,3-Trichloropropane	11.809	75	11141	1.105	ug/L #	67
64) 1,3-Dichlorobenzene	11.831	146	3316	0.117	ug/L	93
65) 1,4-Dichlorobenzene	11.831	146	3316	0.118	ug/L	95
67) 1,2-Dichlorobenzene	12.211	146	11380	0.418	ug/L	96

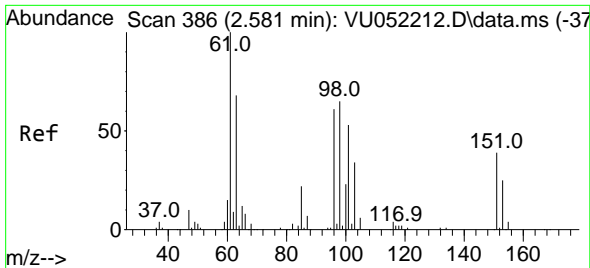
(#) = qualifier out of range (m) = manual integration (+) = signals summed

Data Path : Z:\voasrv\HPCHEM1\MSVOA_U\Data\VU120722\
 Data File : VU052226.D
 Acq On : 08 Dec 2022 03:41
 Operator : JC/MD
 Sample : N5918-08
 Misc : 25.0mL/MSVOA_U/WATER
 ALS Vial : 38 Sample Multiplier: 1

Instrument :
 MSVOA_U
 ClientSampleId :
 C0EH2

Quant Time: Dec 08 04:35:24 2022
 Quant Method : Z:\voasrv\HPCHEM1\MSVOA_U\Method\SFAMUTR111822WMA.M
 Quant Title : TRACE VOA SFAM1.0
 QLast Update : Thu Dec 08 04:19:43 2022
 Response via : Initial Calibration

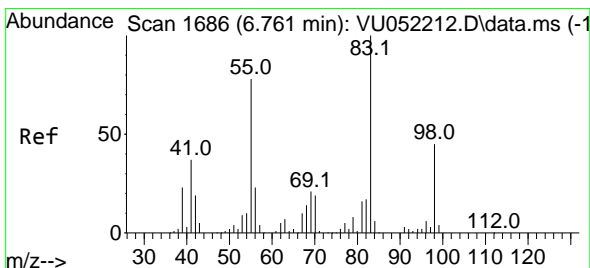
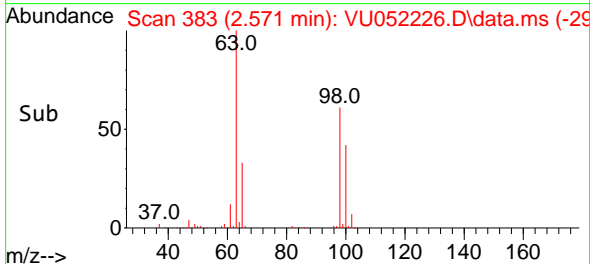
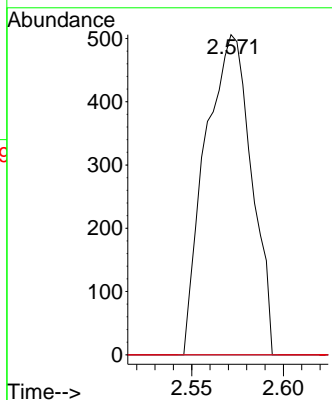
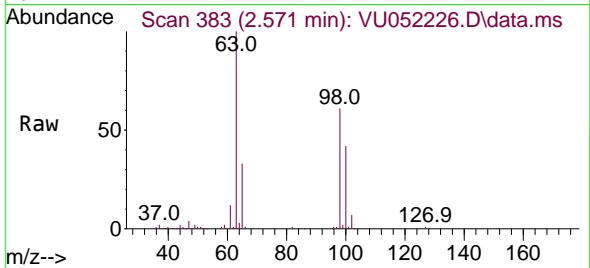




#10
 1,1,2-Trichloro-1,2,2-trifluoroethane
 Concen: 0.061 ug/L
 RT: 2.571 min Scan# 383
 Delta R.T. -0.010 min
 Lab File: VU052226.D
 Acq: 08 Dec 2022 03:41

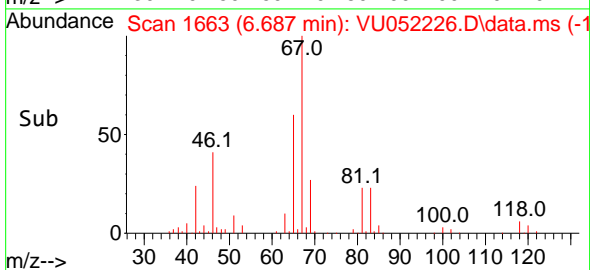
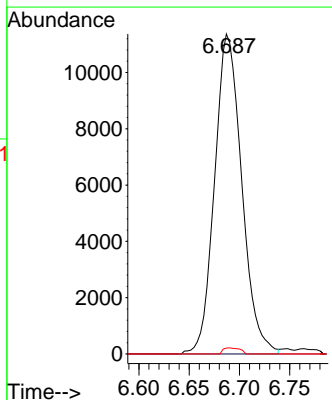
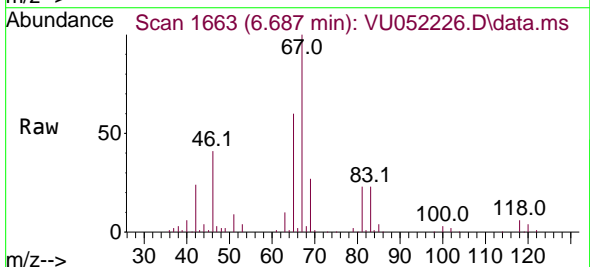
Instrument :
 MSVOA_U
 ClientSampleId :
 C0EH2

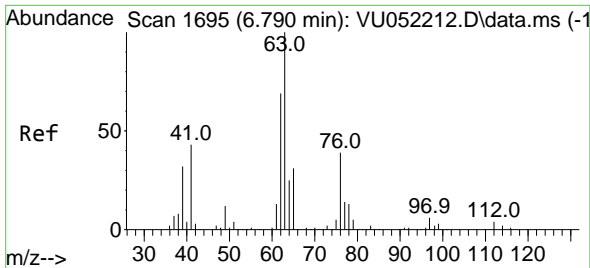
Tgt Ion	Resp	Lower	Upper
101	100		
85	0.0	33.8	50.6#
151	0.0	58.6	88.0#



#35
 Methylcyclohexane
 Concen: 0.874 ug/L
 RT: 6.687 min Scan# 1663
 Delta R.T. -0.074 min
 Lab File: VU052226.D
 Acq: 08 Dec 2022 03:41

Tgt Ion	Resp	Lower	Upper
83	100		
55	0.0	60.8	91.2#
98	1.2	35.1	52.7#

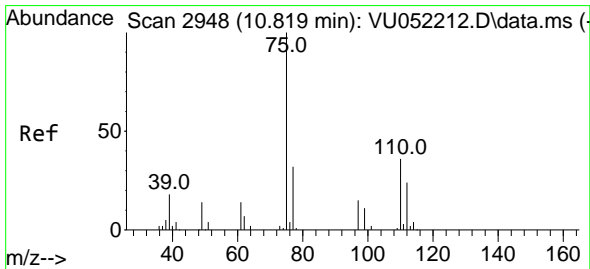
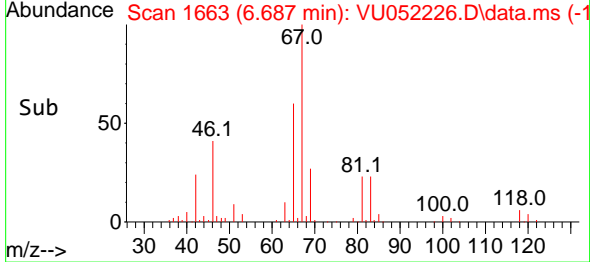
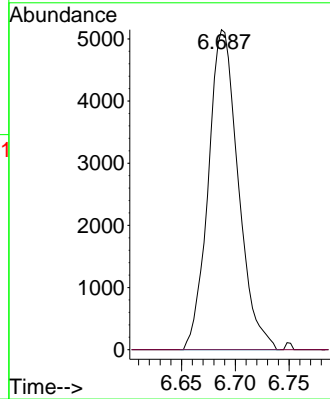
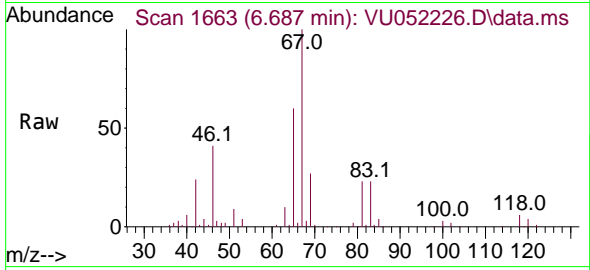




#37
 1,2-Dichloropropane
 Concen: 0.566 ug/L
 RT: 6.687 min Scan# 11
 Delta R.T. -0.103 min
 Lab File: VU052226.D
 Acq: 08 Dec 2022 03:41

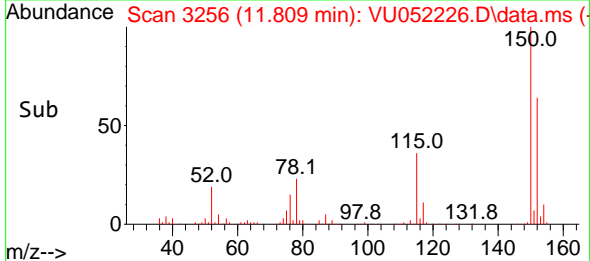
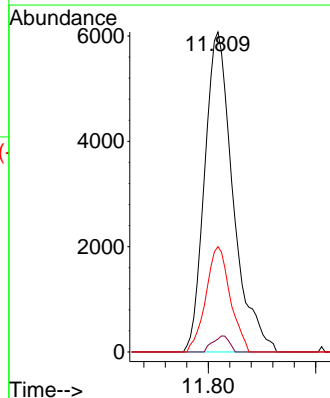
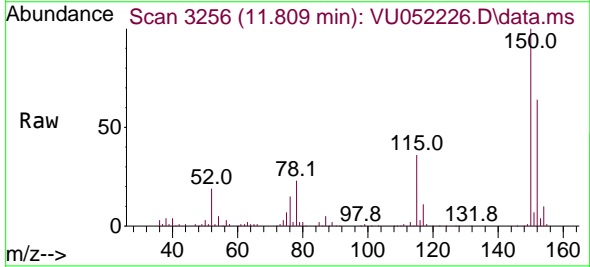
Instrument : MSVOA_U
 ClientSampleId : C0EH2

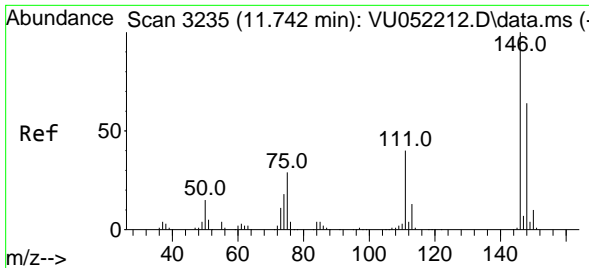
Tgt Ion: 63 Resp: 9978
 Ion Ratio Lower Upper
 63 100
 112 0.0 3.3 4.9#



#61
 1,2,3-Trichloropropane
 Concen: 1.105 ug/L
 RT: 11.809 min Scan# 3256
 Delta R.T. 0.990 min
 Lab File: VU052226.D
 Acq: 08 Dec 2022 03:41

Tgt Ion: 75 Resp: 11141
 Ion Ratio Lower Upper
 75 100
 110 2.9 28.3 42.5#
 77 28.1 26.2 39.2



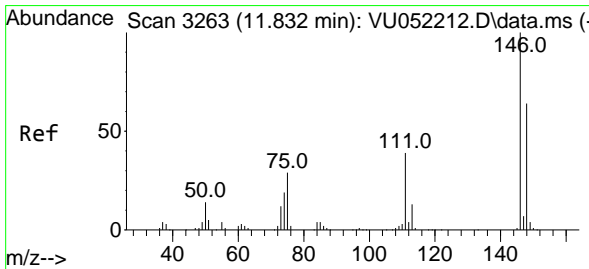
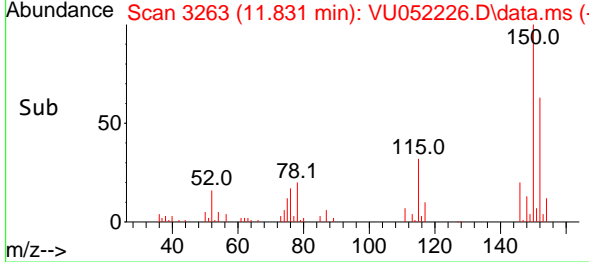
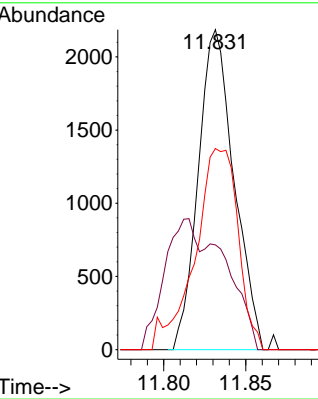
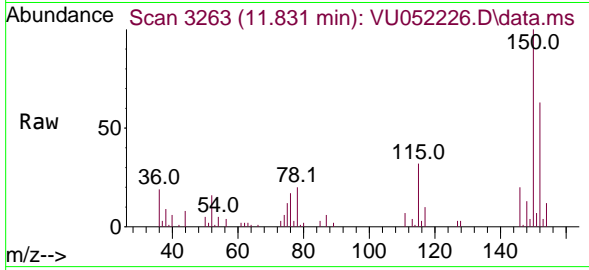


#64
 1,3-Dichlorobenzene
 Concen: 0.117 ug/L
 RT: 11.831 min Scan# 31
 Delta R.T. 0.090 min
 Lab File: VU052226.D
 Acq: 08 Dec 2022 03:41

Instrument :
 MSVOA_U
 ClientSampleId :
 C0EH2

Tgt Ion:146 Resp: 3316

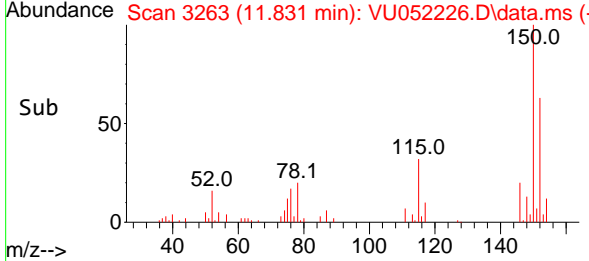
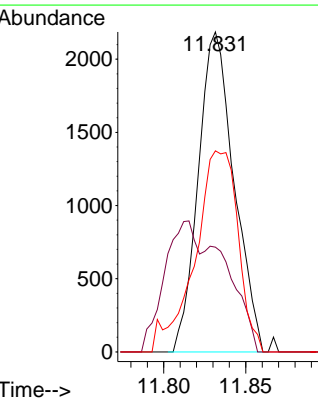
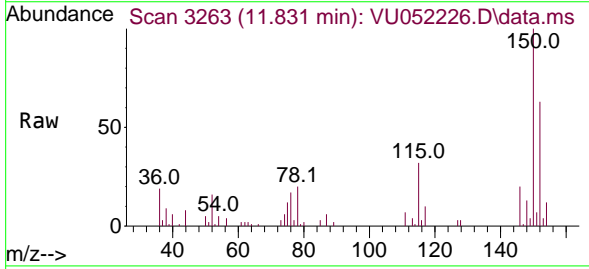
Ion	Ratio	Lower	Upper
146	100		
111	32.8	28.6	53.2
148	62.9	45.4	84.2

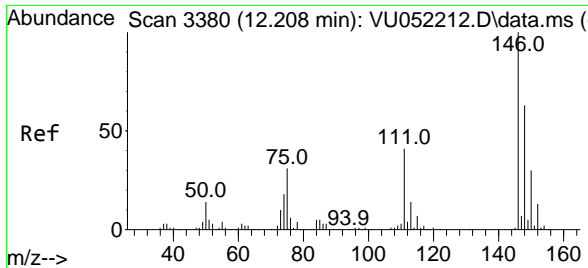


#65
 1,4-Dichlorobenzene
 Concen: 0.118 ug/L
 RT: 11.831 min Scan# 3263
 Delta R.T. -0.000 min
 Lab File: VU052226.D
 Acq: 08 Dec 2022 03:41

Tgt Ion:146 Resp: 3316

Ion	Ratio	Lower	Upper
146	100		
111	32.8	26.9	50.1
148	62.9	45.1	83.7





#67
 1,2-Dichlorobenzene
 Concen: 0.418 ug/L
 RT: 12.211 min Scan# 31
 Delta R.T. 0.003 min
 Lab File: VU052226.D
 Acq: 08 Dec 2022 03:41

Instrument : MSVOA_U
 ClientSampleId : C0EH2

Tgt Ion:146 Resp: 11380

Ion	Ratio	Lower	Upper
146	100		
111	42.0	32.7	49.1
148	67.3	50.6	75.8

