

Data Path : Z:\voasrv\HPCHEM1\MSVOA\_U\Data\VU120722\  
 Data File : VU052209.D  
 Acq On : 07 Dec 2022 20:17  
 Operator : JC/MD  
 Sample : N5916-05  
 Misc : 25.0mL/MSVOA\_U/WATER  
 ALS Vial : 20 Sample Multiplier: 1

Instrument :  
 MSVOA\_U  
 ClientSampleId :  
 F5N23

Integration Parameters: rteint.p  
 Integrator: RTE  
 Smoothing : ON  
 Sampling : 1  
 Start Thrs: 0.1  
 Stop Thrs : 0  
 Filtering: 5  
 Min Area: 3 % of largest Peak  
 Max Peaks: 100  
 Peak Location: TOP

If leading or trailing edge < 100 prefer < Baseline drop else tangent >  
 Peak separation: 5

Method : Z:\voasrv\HPCHEM1\MSVOA\_U\Method\SFAMUTR111822WMA.M  
 Title : TRACE VOA SFAM1.0

Signal : TIC: VU052209.D\data.ms

peak #	R.T. min	first scan	max scan	last scan	PK TY	peak height	corr. area	corr. % max.	% of total
1	1.600	71	81	104	rBV2	135788	178674	13.06%	1.798%
2	1.732	115	122	136	rVB	20826	28570	2.09%	0.287%
3	1.916	164	179	194	rBV	93877	135623	9.91%	1.364%
4	2.372	309	321	346	rVB	139199	232996	17.03%	2.344%
5	2.575	370	384	400	rBV3	282523	596386	43.58%	6.000%
6	3.359	615	628	647	rVB2	22883	51719	3.78%	0.520%
7	3.870	766	787	811	rVB3	23604	79547	5.81%	0.800%
8	4.665	1012	1034	1078	rBV3	470895	1368355	100.00%	13.767%
9	5.063	1135	1158	1192	rBV	158287	361145	26.39%	3.633%
10	5.722	1343	1363	1378	rBV2	302149	797149	58.26%	8.020%
11	6.247	1513	1526	1554	rBV	241694	467006	34.13%	4.698%
12	6.539	1600	1617	1650	rBV	680451	1296840	94.77%	13.047%
13	6.690	1650	1664	1682	rVV	198101	392180	28.66%	3.946%
14	6.790	1685	1695	1711	rVB2	16480	33989	2.48%	0.342%
15	7.565	1923	1936	1955	rBV	84248	152860	11.17%	1.538%
16	7.896	2025	2039	2056	rBV	319188	563518	41.18%	5.669%
17	8.179	2116	2127	2142	rBV	53476	93001	6.80%	0.936%
18	8.552	2232	2243	2255	rBV	46542	77588	5.67%	0.781%
19	8.632	2256	2268	2301	rBV2	437735	897484	65.59%	9.029%
20	9.417	2498	2512	2536	rBV2	352083	761693	55.66%	7.663%
21	10.751	2916	2927	2942	rBV	170324	274673	20.07%	2.763%
22	11.745	3227	3236	3245	rBV2	18765	28839	2.11%	0.290%
23	11.809	3245	3256	3278	rVV	282155	503524	36.80%	5.066%
24	12.192	3361	3375	3403	rBV2	303272	566331	41.39%	5.698%

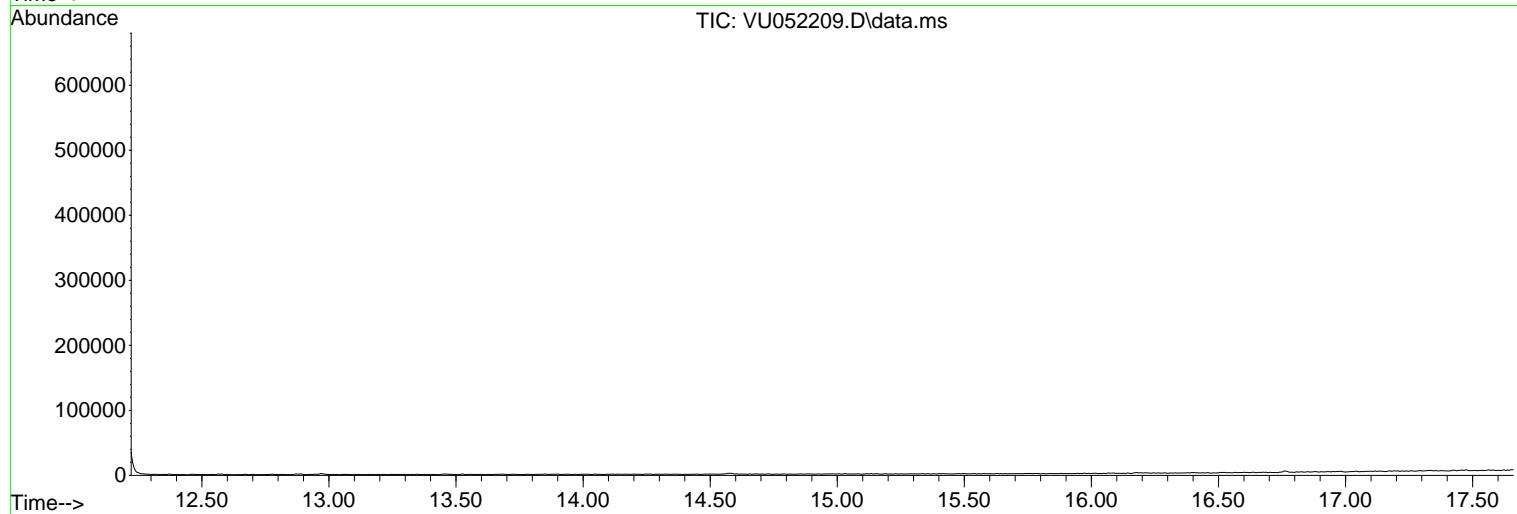
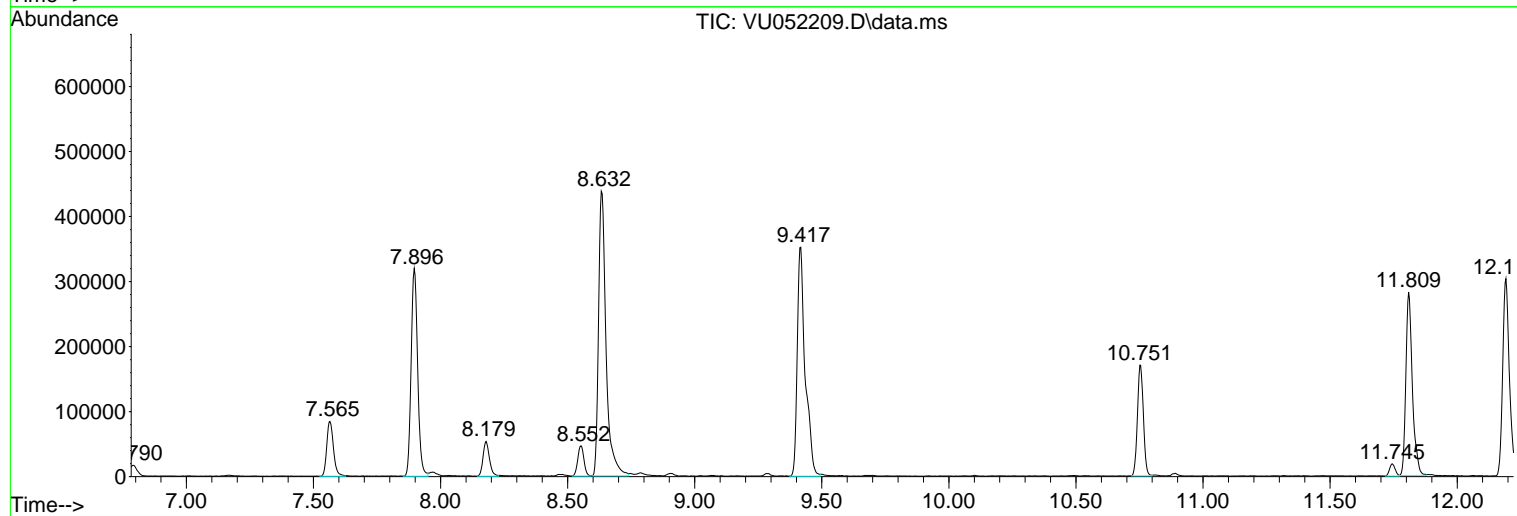
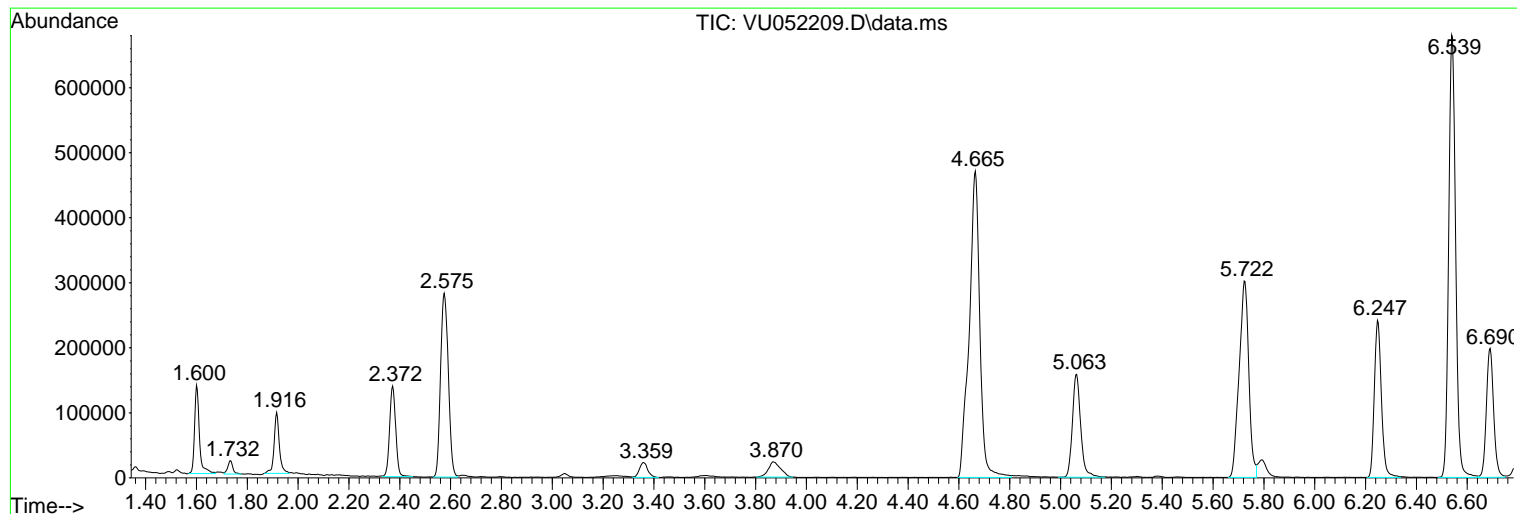
Sum of corrected areas: 9939690

Data Path : Z:\voasrv\HPCHEM1\MSVOA\_U\Data\VU120722\  
Data File : VU052209.D  
Acq On : 07 Dec 2022 20:17  
Operator : JC/MD  
Sample : N5916-05  
Misc : 25.0mL/MSVOA\_U/WATER  
ALS Vial : 20 Sample Multiplier: 1

Instrument :  
MSVOA\_U  
ClientSampleId :  
F5N23

Quant Method : Z:\voasrv\HPCHEM1\MSVOA\_U\Method\SFAMUTR111822WMA.M  
Quant Title : TRACE VOA SFAM1.0

TIC Library : C:\Database\NIST20.L  
TIC Integration Parameters: LSCINT.P



Data Path : Z:\voasrv\HPCHEM1\MSVOA\_U\Data\VU120722\  
 Data File : VU052209.D  
 Acq On : 07 Dec 2022 20:17  
 Operator : JC/MD  
 Sample : N5916-05  
 Misc : 25.0mL/MSVOA\_U/WATER  
 ALS Vial : 20 Sample Multiplier: 1

Instrument :  
 MSVOA\_U  
 ClientSampleId :  
 F5N23

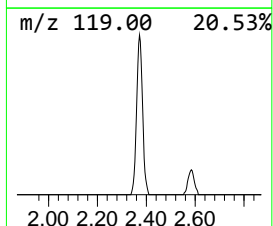
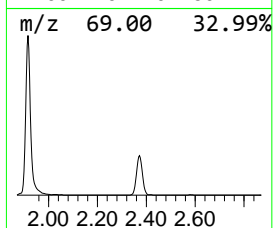
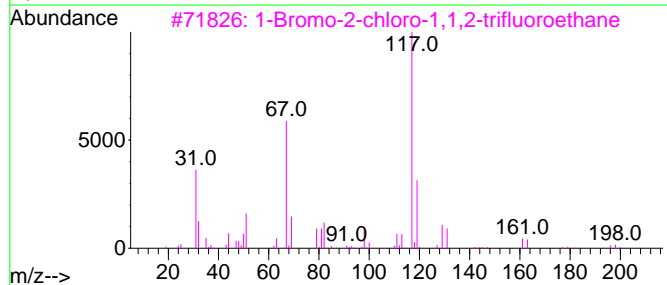
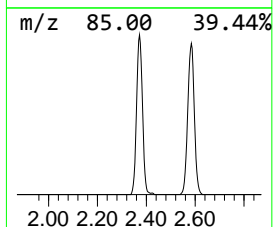
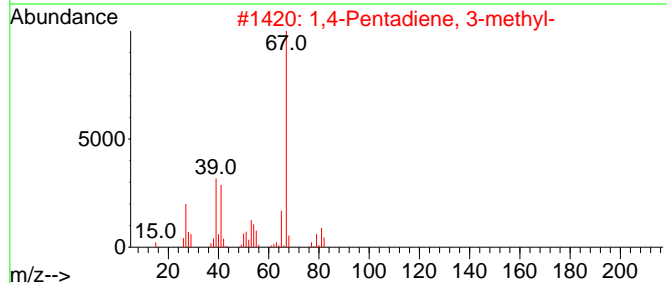
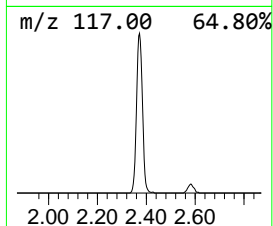
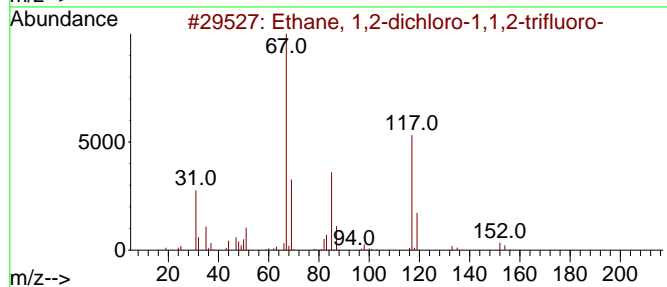
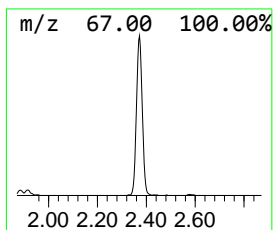
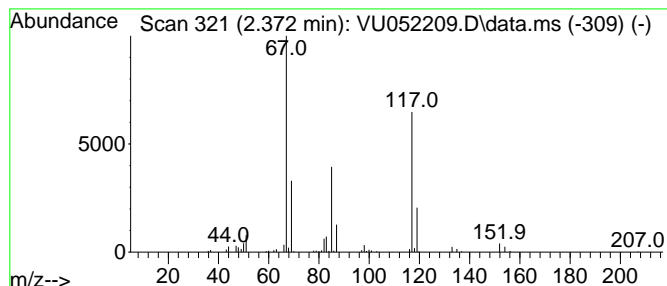
Quant Method : Z:\voasrv\HPCHEM1\MSVOA\_U\Method\SFAMUTR111822WMA.M  
 Quant Title : TRACE VOA SFAM1.0

TIC Library : C:\Database\NIST20.L  
 TIC Integration Parameters: LSCINT.P

\*\*\*\*\*  
 Peak Number 1 Ethane, 1,2-dichloro-1,1,2-... Concentration Rank 1

R.T.	EstConc	Area	Relative to ISTD	R.T.
2.372	2.49 ug/L	232996	1,4-Difluorobenzene	6.247

Hit#	of	5	Tentative ID	MW	MolForm	CAS#	Qual
1			Ethane, 1,2-dichloro-1,1,2-trifl...	152	C2HC12F3	000354-23-4	91
2			1,4-Pentadiene, 3-methyl-	82	C6H10	001115-08-8	9
3			1-Bromo-2-chloro-1,1,2-trifluoro...	196	C2HBrClF3	000354-06-3	9
4			Benzene, (2-chlorocyclopropyl)-	152	C9H9Cl	1000327-31-4	9
5			Cyclopentene, 3-methyl-	82	C6H10	001120-62-3	9



Data Path : Z:\voasrv\HPCHEM1\MSVOA\_U\Data\VU120722\  
Data File : VU052209.D  
Acq On : 07 Dec 2022 20:17  
Operator : JC/MD  
Sample : N5916-05  
Misc : 25.0mL/MSVOA\_U/WATER  
ALS Vial : 20 Sample Multiplier: 1

Instrument :  
MSVOA\_U  
ClientSampleId :  
F5N23

Quant Method : Z:\voasrv\HPCHEM1\MSVOA\_U\Method\SFAMUTR111822WMA.M  
Quant Title : TRACE VOA SFAM1.0

TIC Library : C:\Database\NIST0.L  
TIC Integration Parameters: LSCINT.P

TIC Top Hit name	RT	EstConc	Units	Response	--Internal Standard--			
					#	RT	Resp	Conc
Ethane, 1,2-dic...	2.372	2.5	ug/L	232996	1	6.247	467006	5.0