

Data Path : Z:\voasrv\HPCHEM1\MSVOA_U\Data\VU120821\
 Data File : VU046174.D
 Acq On : 08 Dec 2021 14:42
 Operator : SY/MD
 Sample : M4887-06ME
 Misc : 5.67g/5.0mL/100uL/5.0mL/MSVOA_U/MEOH
 ALS Vial : 13 Sample Multiplier: 1

Instrument :
 MSVOA_U
 ClientSampleId :
 EX8A3ME

Integration Parameters: LSCINT.P

Integrator: RTE
 Smoothing : OFF Filtering: 5
 Sampling : 1 Min Area: 0 % of largest Peak
 Start Thrs: 0.2 Max Peaks: 100
 Stop Thrs : 0 Peak Location: TOP

If leading or trailing edge < 100 prefer < Baseline drop else tangent >
 Peak separation: 5

Method : Z:\voasrv\HPCHEM1\MSVOA_U\Method\SFAMULM112921WMA.M
 Title : VOC Analysis

Signal : TIC: VU046174.D\data.ms

peak #	R.T. min	first scan	max scan	last scan	PK TY	peak height	corr. area	corr. % max.	% of total
1	1.601	74	81	101	rVB	110223	140520	13.28%	1.616%
2	1.919	172	180	199	rVB	68151	112161	10.60%	1.290%
3	2.549	366	376	391	rBV	151878	246602	23.31%	2.837%
4	3.038	521	528	540	rBV3	2631	4874	0.46%	0.056%
5	3.932	803	806	807	rBV	335	179	0.02%	0.002%
6	4.655	1014	1031	1085	rBV	58264	274276	25.92%	3.155%
7	5.067	1144	1159	1182	rVB	163631	406041	38.37%	4.671%
8	5.350	1244	1247	1251	rBV	251	240	0.02%	0.003%
9	5.388	1255	1259	1262	rBV2	236	203	0.02%	0.002%
10	5.424	1267	1270	1272	rBV	190	141	0.01%	0.002%
11	5.491	1287	1291	1296	rBV2	434	475	0.04%	0.005%
12	5.546	1304	1308	1310	rBV2	248	199	0.02%	0.002%
13	5.723	1342	1363	1393	rBV2	409447	1058131	100.00%	12.171%
14	5.851	1400	1403	1408	rVB2	470	292	0.03%	0.003%
15	5.874	1408	1410	1417	rVB2	495	429	0.04%	0.005%
16	5.909	1417	1421	1426	rBV	509	508	0.05%	0.006%
17	5.980	1433	1443	1456	rBV6	4752	11746	1.11%	0.135%
18	6.070	1468	1471	1473	rBV2	297	192	0.02%	0.002%
19	6.105	1479	1482	1485	rBV2	310	275	0.03%	0.003%
20	6.189	1505	1508	1510	rBV2	278	177	0.02%	0.002%
21	6.250	1513	1527	1555	rVB	272847	557165	52.66%	6.409%
22	6.369	1561	1564	1568	rBV2	282	210	0.02%	0.002%
23	6.433	1576	1584	1587	rBV2	375	508	0.05%	0.006%
24	6.539	1605	1617	1629	rVV7	12371	26215	2.48%	0.302%
25	6.690	1650	1664	1693	rVB	229978	467610	44.19%	5.379%
26	6.838	1707	1710	1718	rVB	360	298	0.03%	0.003%
27	7.009	1760	1763	1766	rVB	276	183	0.02%	0.002%
28	7.051	1768	1776	1780	rBV3	694	826	0.08%	0.010%
29	7.092	1786	1789	1791	rBV2	281	165	0.02%	0.002%
30	7.118	1791	1797	1801	rBV2	394	466	0.04%	0.005%
31	7.153	1804	1808	1810	rBV2	239	185	0.02%	0.002%
32	7.282	1845	1848	1853	rBV3	460	468	0.04%	0.005%
33	7.311	1853	1857	1863	rVV2	387	465	0.04%	0.005%
34	7.369	1872	1875	1878	rVB	323	180	0.02%	0.002%
35	7.388	1878	1881	1883	rBV	200	158	0.01%	0.002%
36	7.433	1892	1895	1899	rBV	384	286	0.03%	0.003%

Data Path : Z:\voasrv\HPCHEM1\MSVOA_U\Data\VU120821\
 Data File : VU046174.D
 Acq On : 08 Dec 2021 14:42
 Operator : SY/MD
 Sample : M4887-06ME
 Misc : 5.67g/5.0mL/100uL/5.0mL/MSVOA_U/MEOH
 ALS Vial : 13 Sample Multiplier: 1

Instrument :
 MSVOA_U
 ClientSampleId :
 EX8A3ME

Integration Parameters: LSCINT.P

Integrator: RTE
 Smoothing : OFF
 Sampling : 1
 Start Thrs: 0.2
 Stop Thrs : 0

Filtering: 5
 Min Area: 0 % of largest Peak
 Max Peaks: 100
 Peak Location: TOP

If leading or trailing edge < 100 prefer < Baseline drop else tangent >
 Peak separation: 5

Method : Z:\voasrv\HPCHEM1\MSVOA_U\Method\SFAMULM112921WMA.M
 Title : VOC Analysis

37	7.452	1899	1901	1906	rVB	341	212	0.02%	0.002%
38	7.481	1906	1910	1912	rBV2	394	245	0.02%	0.003%
39	7.568	1923	1937	1961	rBV	126690	252854	23.90%	2.909%
40	7.793	1996	2007	2022	rBV4	7300	15057	1.42%	0.173%
41	7.899	2022	2040	2057	rBV	469700	891912	84.29%	10.259%
42	8.182	2116	2128	2154	rBV	74299	169059	15.98%	1.945%
43	8.321	2168	2171	2176	rBV2	274	232	0.02%	0.003%
44	8.555	2230	2244	2261	rBV	286847	504053	47.64%	5.798%
45	8.681	2262	2283	2318	rVB	180601	569733	53.84%	6.554%
46	8.838	2329	2332	2334	rBV2	298	165	0.02%	0.002%
47	9.054	2395	2399	2402	rBV2	199	191	0.02%	0.002%
48	9.095	2408	2412	2415	rVB	382	260	0.02%	0.003%
49	9.333	2484	2486	2490	rBV	232	159	0.02%	0.002%
50	9.423	2494	2514	2542	rVB	315508	712702	67.35%	8.198%
51	9.536	2542	2549	2551	rBV	342	450	0.04%	0.005%
52	9.665	2581	2589	2591	rVB	358	405	0.04%	0.005%
53	9.697	2591	2599	2600	rBV2	1500	1631	0.15%	0.019%
54	9.745	2610	2614	2618	rBV2	388	347	0.03%	0.004%
55	9.771	2619	2622	2628	rVV2	234	246	0.02%	0.003%
56	9.919	2666	2668	2672	rBV2	266	263	0.02%	0.003%
57	9.970	2680	2684	2687	rBV	248	203	0.02%	0.002%
58	10.021	2697	2700	2705	rBV	336	282	0.03%	0.003%
59	10.066	2711	2714	2717	rBV	275	161	0.02%	0.002%
60	10.189	2750	2752	2754	rBV	275	166	0.02%	0.002%
61	10.234	2763	2766	2768	rBV	361	210	0.02%	0.002%
62	10.349	2800	2802	2805	rBV	216	150	0.01%	0.002%
63	10.456	2831	2835	2837	rBV	327	193	0.02%	0.002%
64	10.536	2858	2860	2868	rVB2	498	439	0.04%	0.005%
65	10.671	2893	2902	2911	rVB4	3010	4945	0.47%	0.057%
66	10.771	2920	2933	2951	rBV	333813	563612	53.26%	6.483%
67	11.009	3000	3007	3010	rBV3	514	628	0.06%	0.007%
68	11.198	3059	3066	3067	rBV	469	363	0.03%	0.004%
69	11.301	3094	3098	3101	rBV2	540	401	0.04%	0.005%
70	11.337	3106	3109	3112	rBV	332	213	0.02%	0.002%
71	11.410	3128	3132	3138	rBV3	721	764	0.07%	0.009%
72	11.459	3139	3147	3160	rVB6	2371	4899	0.46%	0.056%
73	11.536	3168	3171	3176	rBV3	456	545	0.05%	0.006%
74	11.819	3247	3259	3273	rBV	474219	745612	70.46%	8.577%
75	12.066	3328	3336	3337	rBV2	378	382	0.04%	0.004%
76	12.198	3359	3377	3395	rBV	523238	849468	80.28%	9.771%

Data Path : Z:\voasrv\HPCHEM1\MSVOA_U\Data\VU120821\
 Data File : VU046174.D
 Acq On : 08 Dec 2021 14:42
 Operator : SY/MD
 Sample : M4887-06ME
 Misc : 5.67g/5.0mL/100uL/5.0mL/MSVOA_U/MEOH
 ALS Vial : 13 Sample Multiplier: 1

Instrument :
 MSVOA_U
 ClientSampleId :
 EX8A3ME

Integration Parameters: LSCINT.P

Integrator: RTE
 Smoothing : OFF Filtering: 5
 Sampling : 1 Min Area: 0 % of largest Peak
 Start Thrs: 0.2 Max Peaks: 100
 Stop Thrs : 0 Peak Location: TOP

If leading or trailing edge < 100 prefer < Baseline drop else tangent >
 Peak separation: 5

Method : Z:\voasrv\HPCHEM1\MSVOA_U\Method\SFAMULM112921WMA.M
 Title : VOC Analysis

77	12.282	3401	3403	3410	rVB2	404	246	0.02%	0.003%
78	12.327	3410	3417	3429	rVB6	4042	6048	0.57%	0.070%
79	12.401	3436	3440	3448	rVB3	745	820	0.08%	0.009%
80	12.488	3463	3467	3472	rBV2	420	523	0.05%	0.006%
81	12.771	3549	3555	3565	rVB3	1122	1760	0.17%	0.020%
82	12.819	3566	3570	3572	rBV	313	236	0.02%	0.003%
83	12.848	3575	3579	3580	rBV2	326	244	0.02%	0.003%
84	13.124	3662	3665	3669	rBV4	538	522	0.05%	0.006%
85	13.266	3706	3709	3711	rBV2	394	278	0.03%	0.003%
86	13.433	3755	3761	3767	rVB4	2836	3887	0.37%	0.045%
87	13.459	3767	3769	3772	rBV3	303	185	0.02%	0.002%
88	13.587	3803	3809	3817	rVB4	944	1354	0.13%	0.016%
89	13.742	3855	3857	3860	rVB2	267	140	0.01%	0.002%
90	13.777	3864	3868	3871	rBV	273	180	0.02%	0.002%
91	13.809	3871	3878	3881	rBV2	425	602	0.06%	0.007%
92	14.089	3958	3965	3976	rVB2	9242	14016	1.32%	0.161%
93	14.291	4025	4028	4031	rBV2	429	272	0.03%	0.003%
94	14.346	4042	4045	4048	rBV	225	162	0.02%	0.002%
95	14.385	4054	4057	4059	rBV2	436	286	0.03%	0.003%
96	14.449	4072	4077	4086	rVB4	4842	6134	0.58%	0.071%
97	15.073	4262	4271	4277	rVB6	1283	2151	0.20%	0.025%
98	15.221	4308	4317	4327	rVB4	4800	8850	0.84%	0.102%
99	15.404	4367	4374	4385	rVB2	8522	14704	1.39%	0.169%
100	16.410	4679	4687	4693	rBV3	14956	23067	2.18%	0.265%

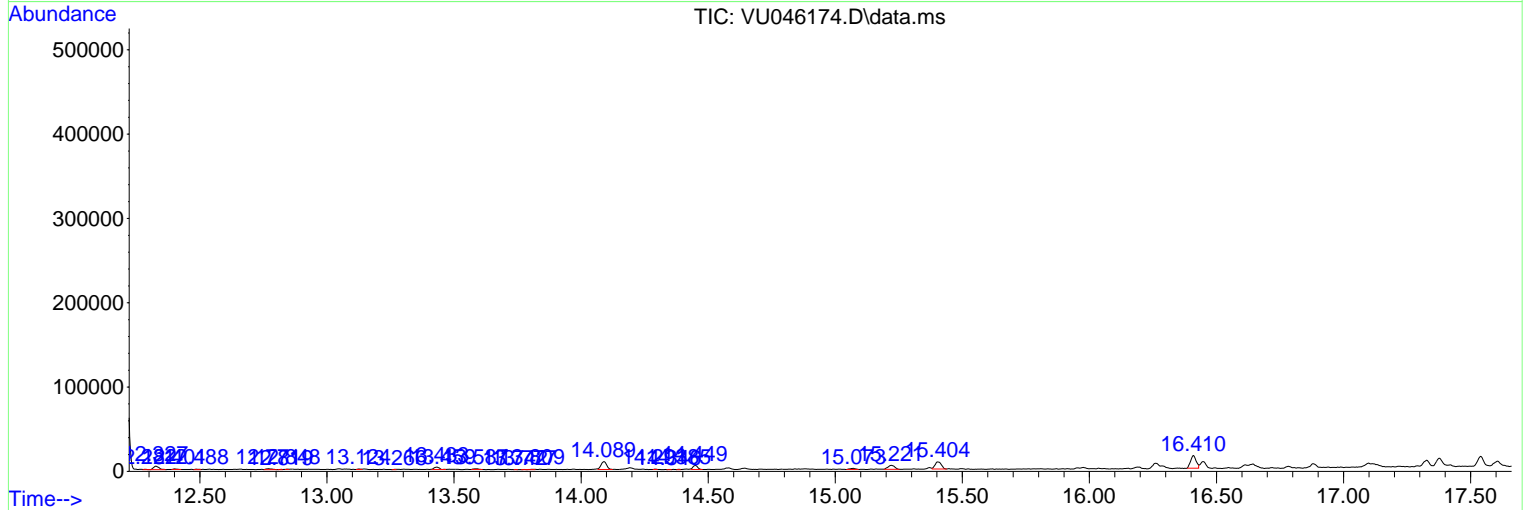
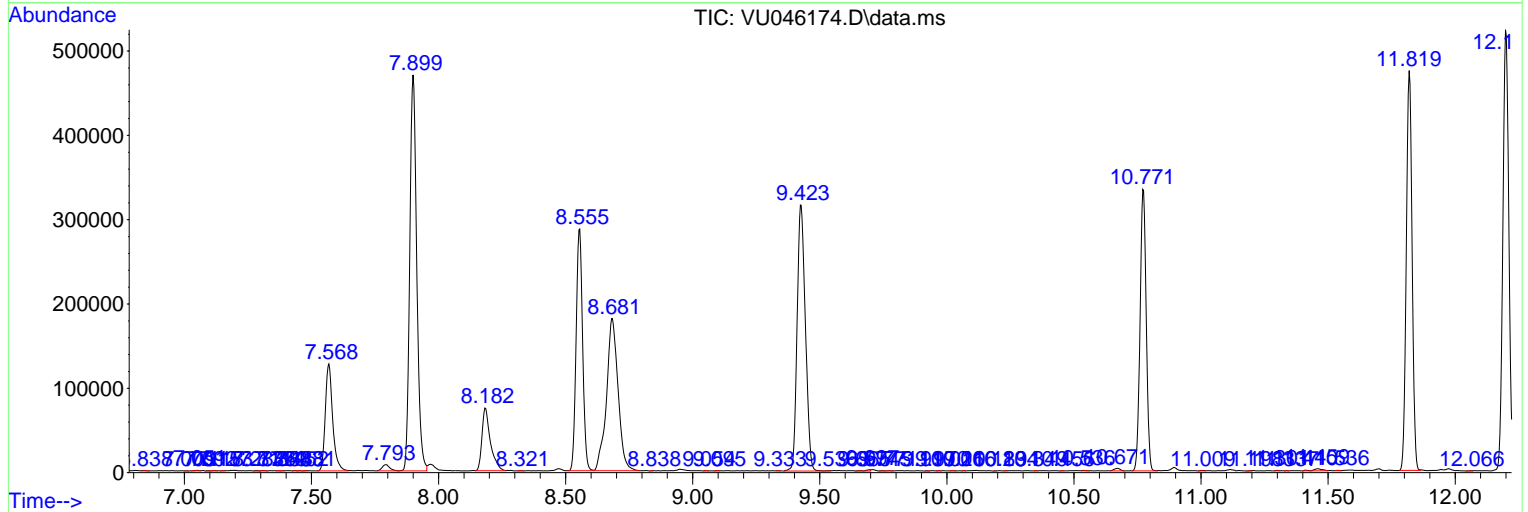
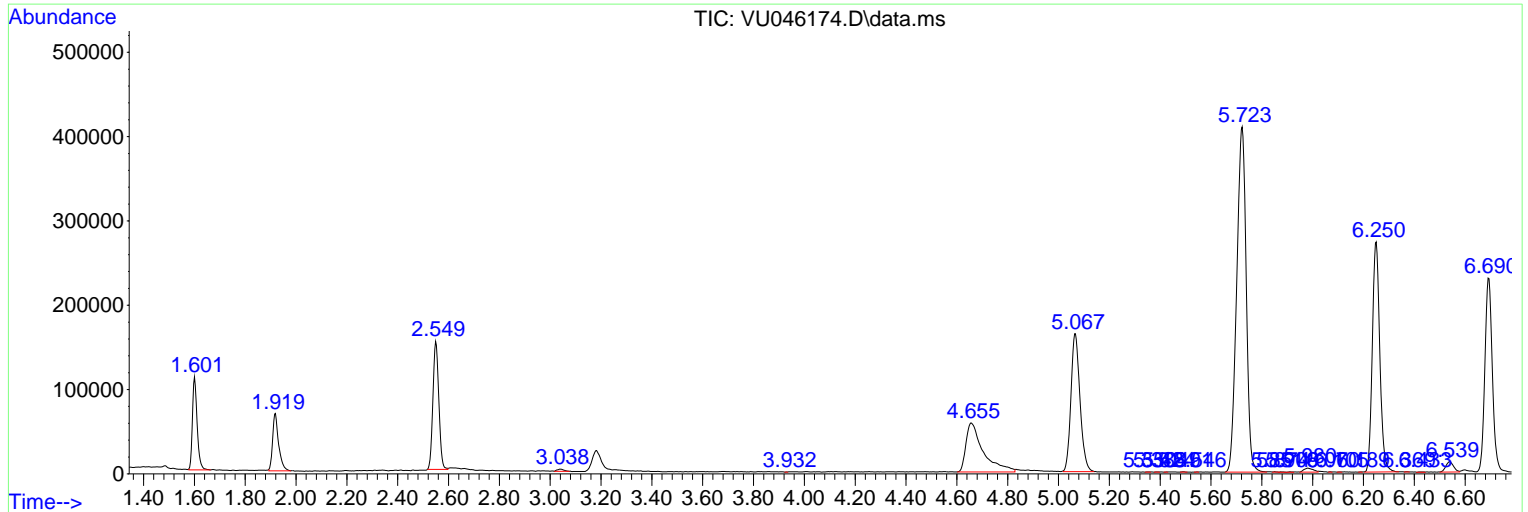
Sum of corrected areas: 8693528

Data Path : Z:\voasrv\HPCHEM1\MSVOA_U\Data\VU120821\
 Data File : VU046174.D
 Acq On : 08 Dec 2021 14:42
 Operator : SY/MD
 Sample : M4887-06ME
 Misc : 5.67g/5.0mL/100uL/5.0mL/MSVOA_U/MEOH
 ALS Vial : 13 Sample Multiplier: 1

Instrument :
 MSVOA_U
ClientSampleId :
 EX8A3ME

Quant Method : Z:\voasrv\HPCHEM1\MSVOA_U\Method\SFAMULM112921WMA.M
 Quant Title : VOC Analysis

TIC Library : C:\Database\NIST20.L
 TIC Integration Parameters: LSCINT.P



Library Search Compound Report

Data Path : Z:\voasrv\HPCHEM1\MSVOA_U\Data\VU120821\
Data File : VU046174.D
Acq On : 08 Dec 2021 14:42
Operator : SY/MD
Sample : M4887-06ME
Misc : 5.67g/5.0mL/100uL/5.0mL/MSVOA_U/MEOH
ALS Vial : 13 Sample Multiplier: 1

Instrument :
MSVOA_U
ClientSampleId :
EX8A3ME

Quant Method : Z:\voasrv\HPCHEM1\MSVOA_U\Method\SFAMULM112921WMA.M
Quant Title : VOC Analysis

TIC Library : C:\Database\NIST20.L
TIC Integration Parameters: LSCINT.P

No Library Search Compounds Detected

Data Path : Z:\voasrv\HPCHEM1\MSVOA_U\Data\VU120821\
Data File : VU046174.D
Acq On : 08 Dec 2021 14:42
Operator : SY/MD
Sample : M4887-06ME
Misc : 5.67g/5.0mL/100uL/5.0mL/MSVOA_U/MEOH
ALS Vial : 13 Sample Multiplier: 1

Instrument :
MSVOA_U
ClientSampleId :
EX8A3ME

Quant Method : Z:\voasrv\HPCHEM1\MSVOA_U\Method\SFAMULM112921WMA.M
Quant Title : VOC Analysis

TIC Library : C:\Database\NIST0.L
TIC Integration Parameters: LSCINT.P

TIC Top Hit name	RT	EstConc	Units	Response	--Internal Standard--		
					#	RT	Resp Conc
