

Data Path : Z:\VOASRV\HPCHEM1\MSVOA U\DATA\VU120920\
 Data File : VU041523.D
 Acq On : 09 Dec 2020 18:52
 Operator : SY/MD
 Sample : L4995-06
 Misc : 25.0mL/MSVOA U/WATER
 ALS Vial : 23 Sample Multiplier: 1

Instrument :
 MSVOA_U
 ClientSampleId :
 C0AP7

Integration Parameters: rteint.p
 Integrator: RTE
 Smoothing : ON Filtering: 5
 Sampling : 1 Min Area: 3 % of largest Peak
 Start Thrs: 0.1 Max Peaks: 100
 Stop Thrs : 0 Peak Location: TOP

If leading or trailing edge < 100 prefer < Baseline drop else tangent >
 Peak separation: 5

Method : Z:\VOASRV\HPCHEM1\MSVOA_U\METHOD\SOMUTR120420WMA.M
 Title : TRACE VOA SOM01.0

Signal : TIC

peak #	R.T. min	first scan	max scan	last scan	PK TY	peak height	corr. area	corr. % max.	% of total
1	1.478	37	43	55	rBV	6850	6704	4.35%	0.537%
2	1.604	75	82	90	rVB	11903	12690	8.24%	1.016%
3	1.922	172	181	193	rVB	12196	15329	9.96%	1.227%
4	2.581	375	386	403	rBB	25943	42447	27.57%	3.398%
5	4.655	1016	1031	1070	rBV2	21108	63337	41.14%	5.071%
6	5.083	1149	1164	1180	rBB	30233	64546	41.92%	5.168%
7	5.739	1348	1368	1387	rBV3	50850	137674	89.42%	11.022%
8	6.263	1517	1531	1549	rBB	59944	108538	70.49%	8.690%
9	6.703	1656	1668	1683	rBB2	32866	61264	39.79%	4.905%
10	7.574	1928	1939	1954	rBB	18479	31207	20.27%	2.498%
11	7.906	2029	2042	2057	rBV	59737	103460	67.20%	8.283%
12	8.185	2119	2129	2142	rBB	12624	20664	13.42%	1.654%
13	8.639	2259	2270	2295	rBV2	82974	153969	100.00%	12.327%
14	9.417	2501	2512	2537	rBV	82342	139843	90.83%	11.196%
15	10.754	2918	2928	2940	rBB	29407	45786	29.74%	3.666%
16	10.889	2962	2970	2981	rBB3	2378	3983	2.59%	0.319%
17	11.809	3245	3256	3269	rBB	80298	126615	82.23%	10.137%
18	12.188	3363	3374	3386	rBB	71298	110999	72.09%	8.887%

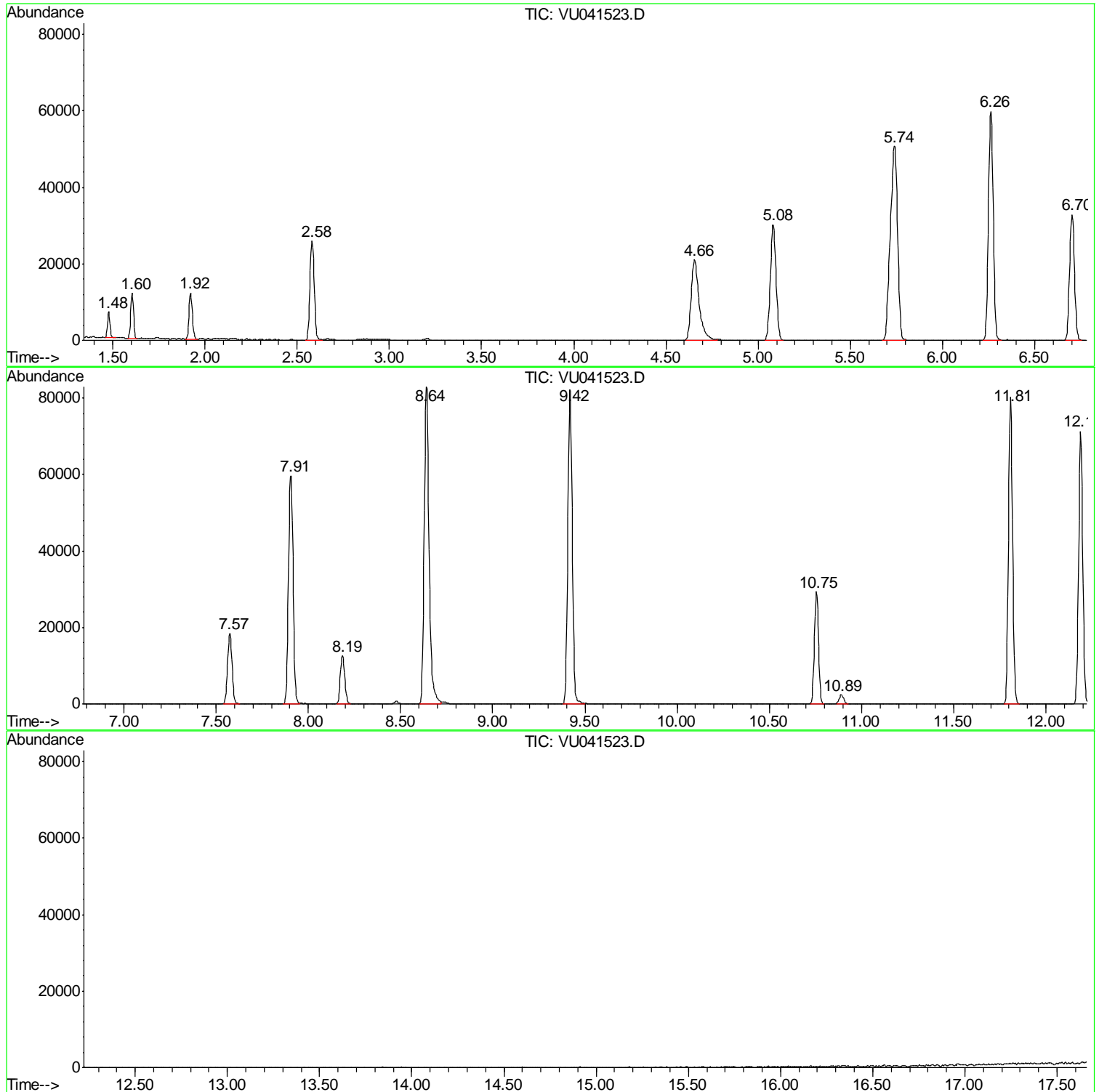
Sum of corrected areas: 1249055

Data Path : Z:\VOASRV\HPCHEM1\MSVOA U\DATA\VU120920\
Data File : VU041523.D
Acq On : 09 Dec 2020 18:52
Operator : SY/MD
Sample : L4995-06
Misc : 25.0mL/MSVOA U/WATER
ALS Vial : 23 Sample Multiplier: 1

Instrument :
MSVOA_U
ClientSampled :
C0AP7

Quant Method : Z:\VOASRV\HPCHEM1\MSVOA_U\METHOD\SOMUTR120420WMA.M
Quant Title : TRACE VOA SOM01.0

TIC Library : C:\DATABASE\NIST11.L
TIC Integration Parameters: LSCINT.P



Data Path : Z:\VOASRV\HPCHEM1\MSVOA_U\DATA\VU120920\
Data File : VU041523.D
Acq On : 09 Dec 2020 18:52
Operator : SY/MD
Sample : L4995-06
Misc : 25.0mL/MSVOA_U/WATER
ALS Vial : 23 Sample Multiplier: 1

Instrument :
MSVOA_U
ClientSampleId :
C0AP7

Quant Method : Z:\VOASRV\HPCHEM1\MSVOA_U\METHOD\SOMUTR120420WMA.M
Quant Title : TRACE VOA SOM01.0

TIC Library : C:\DATABASE\NIST11.L
TIC Integration Parameters: LSCINT.P

No Library Search Compounds Detected

Data Path : Z:\VOASRV\HPCHEM1\MSVOA_U\DATA\VU120920\
Data File : VU041523.D
Acq On : 09 Dec 2020 18:52
Operator : SY/MD
Sample : L4995-06
Misc : 25.0mL/MSVOA_U/WATER
ALS Vial : 23 Sample Multiplier: 1

Instrument :
MSVOA_U
ClientSampleId :
C0AP7

Quant Method : Z:\VOASRV\HPCHEM1\MSVOA_U\METHOD\SOMUTR120420WMA.M
Quant Title : TRACE VOA SOM01.0

TIC Library : C:\DATABASE\NIST11.L
TIC Integration Parameters: LSCINT.P

TIC Top Hit name	RT	EstConc	Units	Response	--Internal Standard--			
					#	RT	Resp	Conc
