

Data Path : Z:\voasrv\HPCHEM1\MSVOA_U\Data\VU120921\
 Data File : VU046235.D
 Acq On : 09 Dec 2021 21:19
 Operator : SY/MD
 Sample : VU1209MBL02
 Misc : 5.00g/5.0mL/100uL/5.0mL/MSVOA_U/MEOH
 ALS Vial : 29 Sample Multiplier: 1

Instrument :
 MSVOA_U
 ClientSampleId :
 VBLK053

Integration Parameters: LSCINT.P

Integrator: RTE
 Smoothing : OFF Filtering: 5
 Sampling : 1 Min Area: 0 % of largest Peak
 Start Thrs: 0.2 Max Peaks: 100
 Stop Thrs : 0 Peak Location: TOP

If leading or trailing edge < 100 prefer < Baseline drop else tangent >
 Peak separation: 5

Method : Z:\voasrv\HPCHEM1\MSVOA_U\Method\SFAMULM112921WMA.M
 Title : VOC Analysis

Signal : TIC: VU046235.D\data.ms

peak #	R.T. min	first scan	max scan	last scan	PK TY	peak height	corr. area	corr. % max.	% of total
1	1.604	74	82	95	rVB	99060	110403	13.82%	1.718%
2	1.919	172	180	193	rVB	78685	99192	12.42%	1.544%
3	2.301	296	299	306	rVB3	481	337	0.04%	0.005%
4	2.411	328	333	337	rBV2	330	314	0.04%	0.005%
5	2.436	338	341	345	rBV2	375	321	0.04%	0.005%
6	2.575	371	384	412	rBV	160053	268369	33.60%	4.177%
7	2.729	429	432	435	rVB3	453	244	0.03%	0.004%
8	2.800	447	454	462	rVB3	1090	1884	0.24%	0.029%
9	2.967	500	506	508	rVV3	368	413	0.05%	0.006%
10	3.047	525	531	533	rBV3	1204	1123	0.14%	0.017%
11	3.411	641	644	655	rVB2	381	388	0.05%	0.006%
12	3.456	655	658	663	rBV	309	267	0.03%	0.004%
13	3.710	734	737	740	rBV	441	333	0.04%	0.005%
14	3.825	769	773	775	rBV	334	251	0.03%	0.004%
15	3.922	797	803	808	rBV	303	409	0.05%	0.006%
16	3.948	808	811	818	rVB	328	382	0.05%	0.006%
17	3.980	818	821	823	rBV	355	262	0.03%	0.004%
18	4.108	856	861	865	rBV2	310	336	0.04%	0.005%
19	4.295	914	919	922	rBV	336	354	0.04%	0.006%
20	4.639	1011	1026	1060	rBV	75606	232108	29.06%	3.613%
21	5.070	1143	1160	1185	rVV	140148	322677	40.40%	5.022%
22	5.202	1198	1201	1208	rBV	385	404	0.05%	0.006%
23	5.304	1229	1233	1235	rBV2	277	242	0.03%	0.004%
24	5.330	1238	1241	1246	rVB2	584	438	0.05%	0.007%
25	5.729	1344	1365	1383	rBV2	293123	798700	100.00%	12.431%
26	6.205	1506	1513	1514	rBV2	469	490	0.06%	0.008%
27	6.253	1515	1528	1547	rVV	248233	460626	57.67%	7.169%
28	6.533	1606	1615	1625	rBV5	3832	8187	1.03%	0.127%
29	6.693	1652	1665	1684	rBV	187697	358711	44.91%	5.583%
30	6.793	1694	1696	1699	rBV	394	254	0.03%	0.004%
31	7.044	1771	1774	1783	rVB2	617	923	0.12%	0.014%
32	7.179	1813	1816	1819	rBV3	520	460	0.06%	0.007%
33	7.246	1833	1837	1841	rVB2	408	322	0.04%	0.005%
34	7.295	1846	1852	1858	rVV	330	390	0.05%	0.006%
35	7.414	1885	1889	1892	rBV2	265	230	0.03%	0.004%
36	7.478	1903	1909	1914	rBV2	286	362	0.05%	0.006%

Data Path : Z:\voasrv\HPCHEM1\MSVOA_U\Data\VU120921\
 Data File : VU046235.D
 Acq On : 09 Dec 2021 21:19
 Operator : SY/MD
 Sample : VU1209MBL02
 Misc : 5.00g/5.0mL/100uL/5.0mL/MSVOA_U/MEOH
 ALS Vial : 29 Sample Multiplier: 1

Instrument :
 MSVOA_U
 ClientSampleId :
 VBLK053

Integration Parameters: LSCINT.P

Integrator: RTE
 Smoothing : OFF
 Sampling : 1
 Start Thrs: 0.2
 Stop Thrs : 0

Filtering: 5
 Min Area: 0 % of largest Peak
 Max Peaks: 100
 Peak Location: TOP

If leading or trailing edge < 100 prefer < Baseline drop else tangent >
 Peak separation: 5

Method : Z:\voasrv\HPCHEM1\MSVOA_U\Method\SFAMULM112921WMA.M
 Title : VOC Analysis

37	7.568	1925	1937	1959	rBV	104032	181357	22.71%	2.823%
38	7.693	1969	1976	1980	rVB3	687	943	0.12%	0.015%
39	7.790	2005	2006	2018	rVB3	636	750	0.09%	0.012%
40	7.902	2022	2041	2057	rBV	368018	641792	80.35%	9.989%
41	8.182	2117	2128	2147	rBV	71591	120995	15.15%	1.883%
42	8.333	2173	2175	2180	rVB2	471	431	0.05%	0.007%
43	8.362	2180	2184	2188	rBV2	570	658	0.08%	0.010%
44	8.410	2193	2199	2204	rBV2	356	393	0.05%	0.006%
45	8.520	2229	2233	2236	rBV2	376	285	0.04%	0.004%
46	8.558	2242	2245	2250	rBV2	471	392	0.05%	0.006%
47	8.635	2254	2269	2298	rBV	250765	452632	56.67%	7.045%
48	8.764	2306	2309	2316	rVB2	626	702	0.09%	0.011%
49	8.803	2316	2321	2327	rVB2	635	742	0.09%	0.012%
50	8.864	2332	2340	2343	rBV2	231	351	0.04%	0.005%
51	8.915	2348	2356	2363	rBV5	2073	2696	0.34%	0.042%
52	9.053	2393	2399	2401	rBV2	437	432	0.05%	0.007%
53	9.420	2497	2513	2541	rBV	358815	596108	74.63%	9.278%
54	9.565	2554	2558	2559	rBV2	633	376	0.05%	0.006%
55	9.697	2592	2599	2606	rVB2	1221	1688	0.21%	0.026%
56	9.841	2639	2644	2647	rBV	299	243	0.03%	0.004%
57	9.870	2647	2653	2661	rBV2	319	575	0.07%	0.009%
58	9.928	2665	2671	2674	rBV	352	409	0.05%	0.006%
59	10.098	2720	2724	2725	rVV3	550	393	0.05%	0.006%
60	10.115	2725	2729	2738	rVB5	1192	1625	0.20%	0.025%
61	10.488	2838	2845	2850	rVV3	721	937	0.12%	0.015%
62	10.545	2859	2863	2867	rVB	302	279	0.03%	0.004%
63	10.578	2867	2873	2878	rBV2	503	522	0.07%	0.008%
64	10.610	2879	2883	2886	rBV	289	250	0.03%	0.004%
65	10.677	2895	2904	2913	rBV2	521	1066	0.13%	0.017%
66	10.758	2914	2929	2945	rBV	285007	457683	57.30%	7.124%
67	11.086	3026	3031	3032	rBV2	821	707	0.09%	0.011%
68	11.233	3073	3077	3080	rVB2	313	249	0.03%	0.004%
69	11.266	3080	3087	3089	rBV2	371	492	0.06%	0.008%
70	11.385	3121	3124	3128	rVB	522	356	0.04%	0.006%
71	11.417	3131	3134	3137	rVB2	479	230	0.03%	0.004%
72	11.468	3143	3150	3159	rVB4	1850	2917	0.37%	0.045%
73	11.668	3208	3212	3214	rBV2	353	254	0.03%	0.004%
74	11.751	3231	3238	3244	rVB3	1234	1640	0.21%	0.026%
75	11.812	3244	3257	3273	rBV	385667	612027	76.63%	9.526%
76	12.053	3328	3332	3336	rVB2	335	326	0.04%	0.005%

Data Path : Z:\voasrv\HPCHEM1\MSVOA_U\Data\VU120921\
 Data File : VU046235.D
 Acq On : 09 Dec 2021 21:19
 Operator : SY/MD
 Sample : VU1209MBL02
 Misc : 5.00g/5.0mL/100uL/5.0mL/MSVOA_U/MEOH
 ALS Vial : 29 Sample Multiplier: 1

Instrument :
 MSVOA_U
 ClientSampleId :
 VBLK053

Integration Parameters: LSCINT.P

Integrator: RTE
 Smoothing : OFF Filtering: 5
 Sampling : 1 Min Area: 0 % of largest Peak
 Start Thrs: 0.2 Max Peaks: 100
 Stop Thrs : 0 Peak Location: TOP

If leading or trailing edge < 100 prefer < Baseline drop else tangent >
 Peak separation: 5

Method : Z:\voasrv\HPCHEM1\MSVOA_U\Method\SFAMULM112921WMA.M
 Title : VOC Analysis

77	12.195	3363	3376	3390	rBV	398126	641242	80.29%	9.981%
78	12.356	3423	3426	3432	rVB	441	430	0.05%	0.007%
79	12.407	3440	3442	3445	rBV	332	239	0.03%	0.004%
80	12.471	3459	3462	3466	rVV	381	383	0.05%	0.006%
81	12.622	3506	3509	3516	rVB2	376	386	0.05%	0.006%
82	12.934	3603	3606	3613	rVB	550	625	0.08%	0.010%
83	13.221	3688	3695	3709	rVB6	2099	3502	0.44%	0.055%
84	13.391	3742	3748	3751	rBV2	534	505	0.06%	0.008%
85	13.468	3769	3772	3775	rBV	244	234	0.03%	0.004%
86	13.658	3825	3831	3834	rBV	422	431	0.05%	0.007%
87	13.844	3881	3889	3899	rVB4	2443	3632	0.45%	0.057%
88	14.008	3937	3940	3946	rVB2	317	301	0.04%	0.005%
89	14.089	3958	3965	3973	rBV2	4219	5961	0.75%	0.093%
90	14.169	3985	3990	3991	rBV2	279	240	0.03%	0.004%
91	14.262	4016	4019	4024	rBV2	292	330	0.04%	0.005%
92	14.330	4033	4040	4052	rBV5	3527	5372	0.67%	0.084%
93	15.214	4310	4315	4319	rBV2	500	564	0.07%	0.009%
94	15.285	4335	4337	4341	rVB	459	277	0.03%	0.004%
95	15.314	4341	4346	4349	rBV2	490	512	0.06%	0.008%
96	15.426	4377	4381	4384	rBV2	420	382	0.05%	0.006%
97	15.494	4399	4402	4404	rBV	467	342	0.04%	0.005%
98	15.873	4517	4520	4523	rBV2	462	316	0.04%	0.005%
99	15.986	4551	4555	4559	rBV2	527	411	0.05%	0.006%
100	16.066	4576	4580	4581	rBV	356	258	0.03%	0.004%

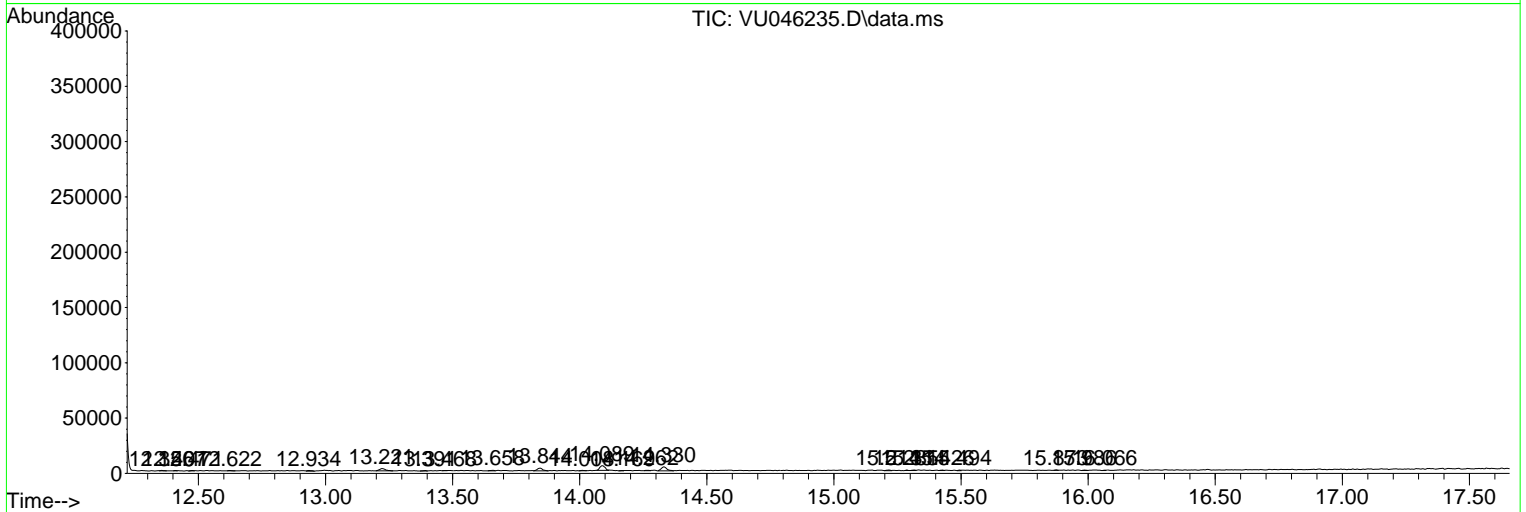
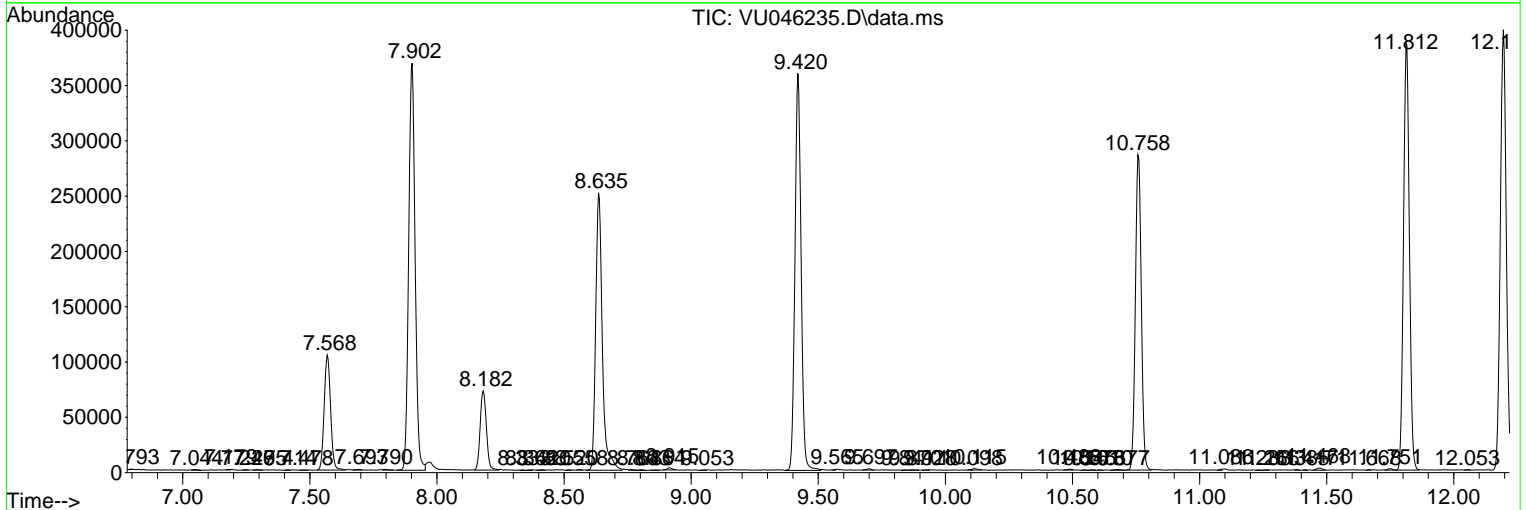
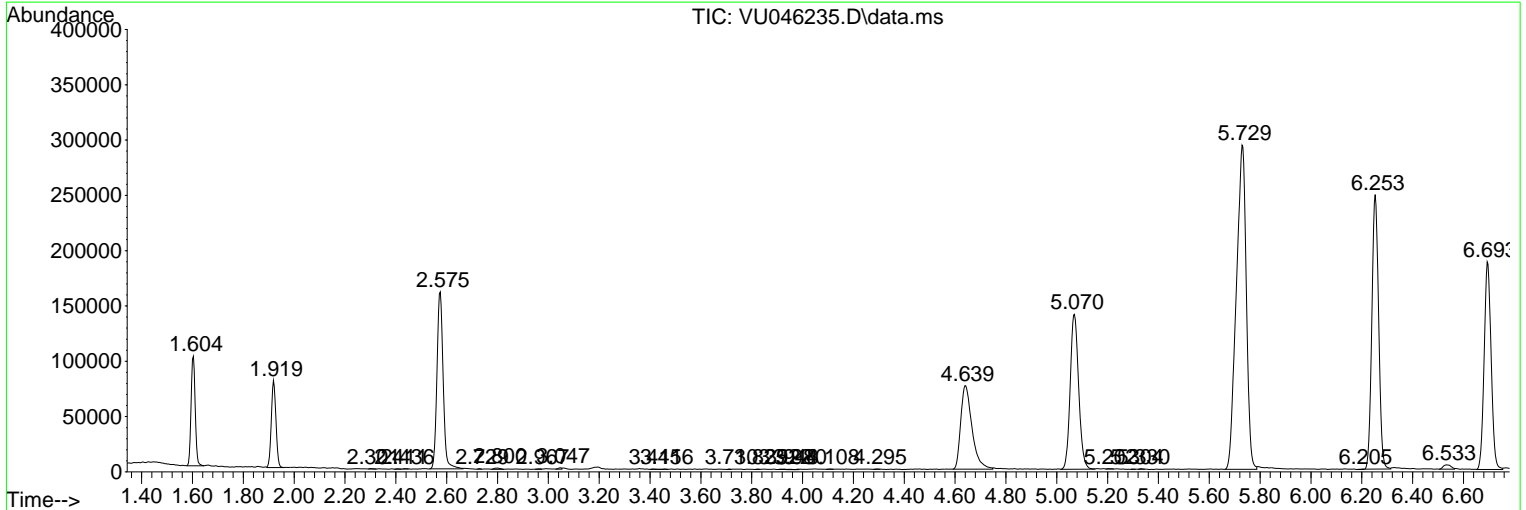
Sum of corrected areas: 6424884

Data Path : Z:\voasrv\HPCHEM1\MSVOA_U\Data\VU120921\
 Data File : VU046235.D
 Acq On : 09 Dec 2021 21:19
 Operator : SY/MD
 Sample : VU1209MBL02
 Misc : 5.00g/5.0mL/100uL/5.0mL/MSVOA_U/MEOH
 ALS Vial : 29 Sample Multiplier: 1

Instrument :
 MSVOA_U
ClientSampleId :
 VBLK053

Quant Method : Z:\voasrv\HPCHEM1\MSVOA_U\Method\SFAMULM112921WMA.M
 Quant Title : VOC Analysis

TIC Library : C:\Database\NIST20.L
 TIC Integration Parameters: LSCINT.P



Data Path : Z:\voasrv\HPCHEM1\MSVOA_U\Data\VU120921\
Data File : VU046235.D
Acq On : 09 Dec 2021 21:19
Operator : SY/MD
Sample : VU1209MBL02
Misc : 5.00g/5.0mL/100uL/5.0mL/MSVOA_U/MEOH
ALS Vial : 29 Sample Multiplier: 1

Instrument :
MSVOA_U
ClientSampleId :
VBLK053

Quant Method : Z:\voasrv\HPCHEM1\MSVOA_U\Method\SFAMULM112921WMA.M
Quant Title : VOC Analysis

TIC Library : C:\Database\NIST0.L
TIC Integration Parameters: LSCINT.P

No Library Search Compounds Detected

Data Path : Z:\voasrv\HPCHEM1\MSVOA_U\Data\VU120921\
Data File : VU046235.D
Acq On : 09 Dec 2021 21:19
Operator : SY/MD
Sample : VU1209MBL02
Misc : 5.00g/5.0mL/100uL/5.0mL/MSVOA_U/MEOH
ALS Vial : 29 Sample Multiplier: 1

Instrument :
MSVOA_U
ClientSampleId :
VBLK053

Quant Method : Z:\voasrv\HPCHEM1\MSVOA_U\Method\SFAMULM112921WMA.M
Quant Title : VOC Analysis

TIC Library : C:\Database\NIST0.L
TIC Integration Parameters: LSCINT.P

TIC Top Hit name	RT	EstConc	Units	Response	--Internal Standard--		
					#	RT	Resp Conc
