

Data Path : Z:\voasrv\HPCHEM1\MSVOA_U\Data\VU120922\
 Data File : VU052296.D
 Acq On : 09 Dec 2022 13:02
 Operator : JC/MD
 Sample : N5916-13DL 40X
 Misc : 25.0mL/MSVOA_U/WATER
 ALS Vial : 10 Sample Multiplier: 1

Instrument :
 MSVOA_U
 ClientSampleId :
 F5N31DL

Quant Time: Dec 09 23:11:27 2022
 Quant Method : Z:\voasrv\HPCHEM1\MSVOA_U\Method\SFAMUTR111822WMA.M
 Quant Title : TRACE VOA SFAM1.0
 QLast Update : Thu Dec 08 04:19:43 2022
 Response via : Initial Calibration

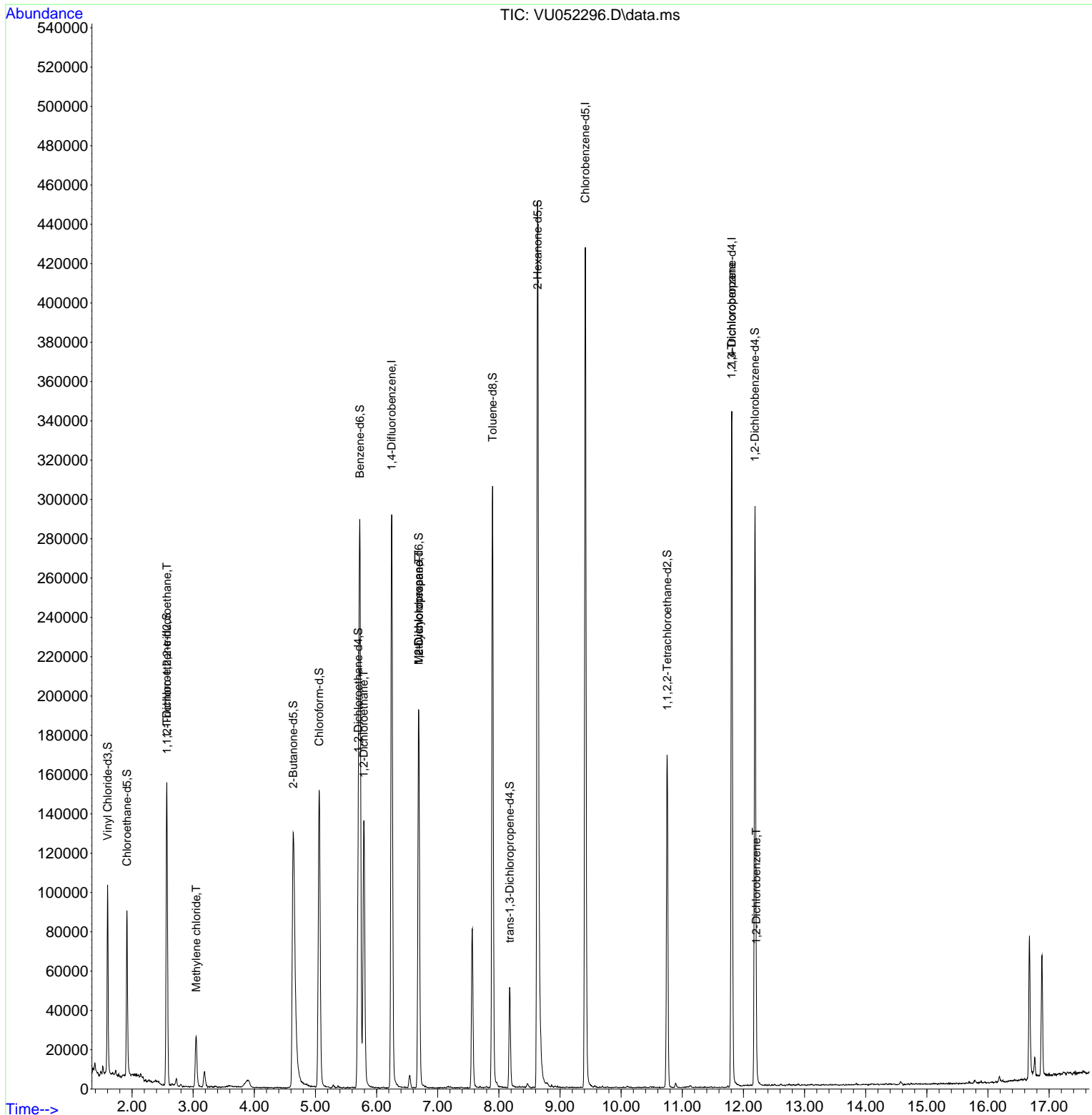
Compound	R.T.	QIon	Response	Conc	Units	Dev(Min)
Internal Standards						
1) 1,4-Difluorobenzene	6.247	114	246442	5.000	ug/L	0.00
28) Chlorobenzene-d5	9.414	117	247926	5.000	ug/L	0.00
58) 1,4-Dichlorobenzene-d4	11.810	152	97434	5.000	ug/L	0.00
System Monitoring Compounds						
4) Vinyl Chloride-d3	1.601	65	69532	2.901	ug/L	0.00
Spiked Amount	5.000	Range 40 - 130	Recovery =	58.000%		
7) Chloroethane-d5	1.916	69	64426	3.460	ug/L	0.00
Spiked Amount	5.000	Range 65 - 130	Recovery =	69.200%		
11) 1,1-Dichloroethene-d2	2.569	65	29597	3.444	ug/L	0.00
Spiked Amount	5.000	Range 60 - 125	Recovery =	68.800%		
20) 2-Butanone-d5	4.636	46	231670	53.317	ug/L	0.00
Spiked Amount	50.000	Range 40 - 130	Recovery =	106.640%		
24) Chloroform-d	5.061	84	146428	4.157	ug/L	0.00
Spiked Amount	5.000	Range 70 - 125	Recovery =	83.200%		
26) 1,2-Dichloroethane-d4	5.700	65	76265	4.287	ug/L	0.00
Spiked Amount	5.000	Range 70 - 130	Recovery =	85.800%		
32) Benzene-d6	5.726	84	283399	3.850	ug/L	0.00
Spiked Amount	5.000	Range 70 - 125	Recovery =	77.000%		
36) 1,2-Dichloropropane-d6	6.688	67	99650	4.375	ug/L	0.00
Spiked Amount	5.000	Range 60 - 140	Recovery =	87.400%		
41) Toluene-d8	7.897	98	213642	3.208	ug/L	0.00
Spiked Amount	5.000	Range 70 - 130	Recovery =	64.200%#		
43) trans-1,3-Dichloroprop...	8.176	79	29830	3.594	ug/L	0.00
Spiked Amount	5.000	Range 55 - 130	Recovery =	71.800%		
46) 2-Hexanone-d5	8.633	63	155649	44.246	ug/L	0.00
Spiked Amount	50.000	Range 45 - 130	Recovery =	88.500%		
56) 1,1,2,2-Tetrachloroeth...	10.752	84	89008	4.507	ug/L	0.00
Spiked Amount	5.000	Range 65 - 120	Recovery =	90.200%		
66) 1,2-Dichlorobenzene-d4	12.189	152	80824	4.333	ug/L	0.00
Spiked Amount	5.000	Range 80 - 120	Recovery =	86.600%		
Target Compounds						
10) 1,1,2-Trichloro-1,2,2-...	2.572	101	896	0.050	ug/L #	28
16) Methylene chloride	3.048	84	13715	0.567	ug/L	92
27) 1,2-Dichloroethane	5.790	62	114626	5.347	ug/L	100
35) Methylcyclohexane	6.688	83	22332	0.771	ug/L #	19
37) 1,2-Dichloropropane	6.688	63	9811	0.470	ug/L #	88
61) 1,2,3-Trichloropropane	11.806	75	11216	1.006	ug/L #	68
67) 1,2-Dichlorobenzene	12.211	146	3933	0.131	ug/L #	82

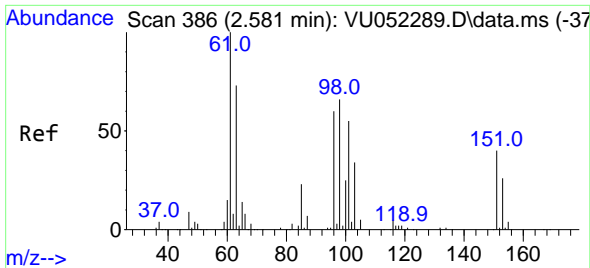
(#) = qualifier out of range (m) = manual integration (+) = signals summed

Data Path : Z:\voasrv\HPCHEM1\MSVOA_U\Data\VU120922\
 Data File : VU052296.D
 Acq On : 09 Dec 2022 13:02
 Operator : JC/MD
 Sample : N5916-13DL 40X
 Misc : 25.0mL/MSVOA_U/WATER
 ALS Vial : 10 Sample Multiplier: 1

Instrument :
 MSVOA_U
 ClientSampleId :
 F5N31DL

Quant Time: Dec 09 23:11:27 2022
 Quant Method : Z:\voasrv\HPCHEM1\MSVOA_U\Method\SFAMUTR111822WMA.M
 Quant Title : TRACE VOA SFAM1.0
 QLast Update : Thu Dec 08 04:19:43 2022
 Response via : Initial Calibration



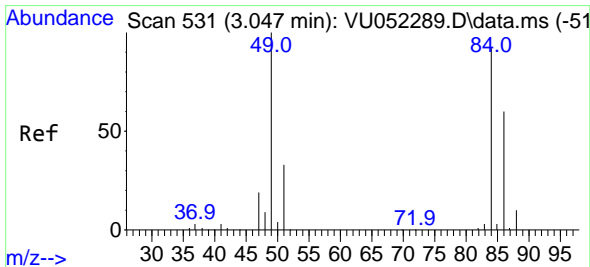
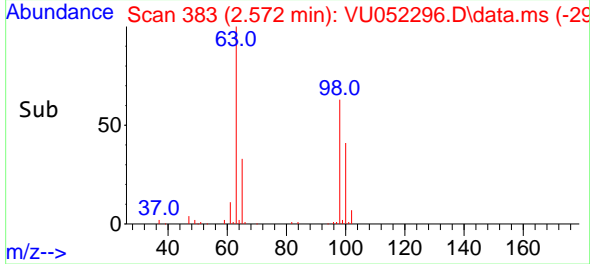
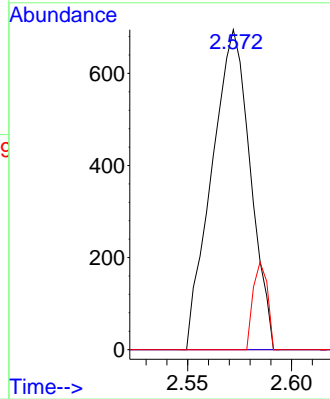
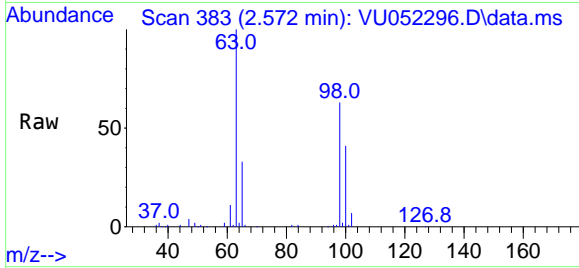


#10
 1,1,2-Trichloro-1,2,2-trifluoroethane
 Concen: 0.050 ug/L
 RT: 2.572 min Scan# 383
 Delta R.T. -0.009 min
 Lab File: VU052296.D
 Acq: 09 Dec 2022 13:02

Instrument : MSVOA_U
 ClientSampleId : F5N31DL

Tgt Ion:101 Resp: 896

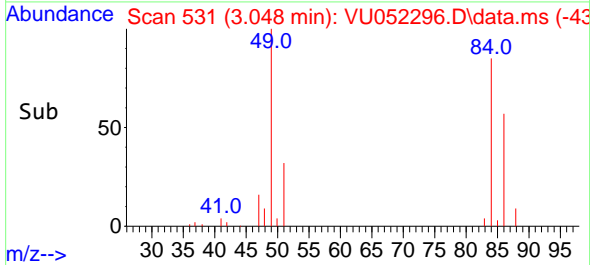
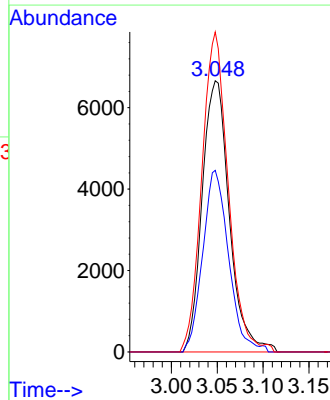
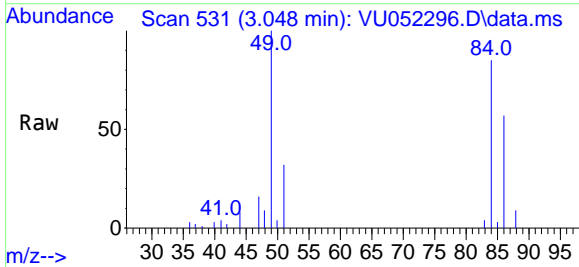
Ion	Ratio	Lower	Upper
101	100		
85	0.0	33.8	50.6#
151	10.2	58.6	88.0#

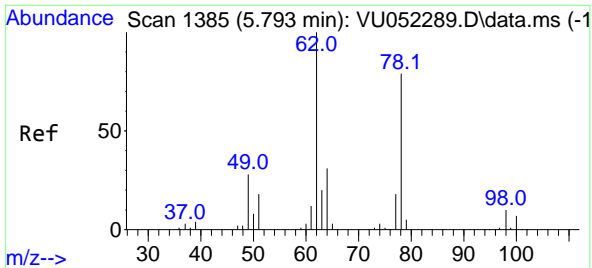


#16
 Methylene chloride
 Concen: 0.567 ug/L
 RT: 3.048 min Scan# 531
 Delta R.T. 0.000 min
 Lab File: VU052296.D
 Acq: 09 Dec 2022 13:02

Tgt Ion: 84 Resp: 13715

Ion	Ratio	Lower	Upper
84	100		
86	67.0	43.8	81.4
49	118.0	75.9	141.1

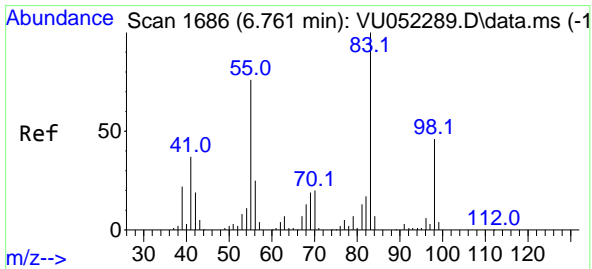
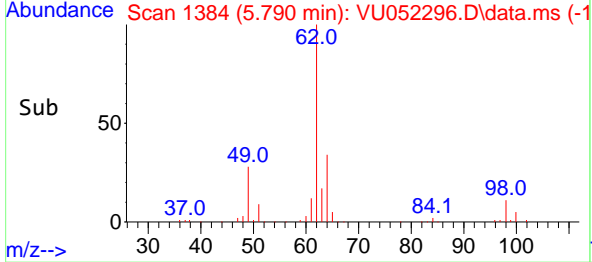
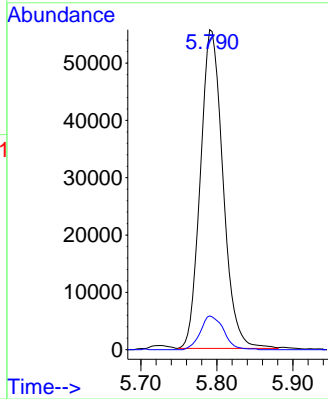
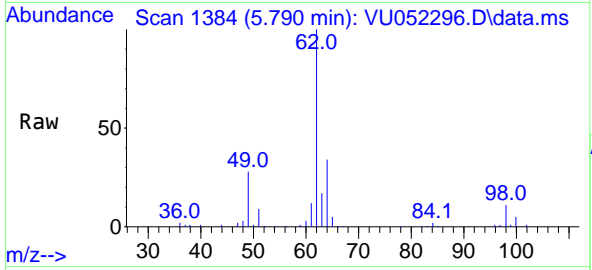




#27
 1,2-Dichloroethane
 Concen: 5.347 ug/L
 RT: 5.790 min Scan# 11
 Delta R.T. -0.003 min
 Lab File: VU052296.D
 Acq: 09 Dec 2022 13:02

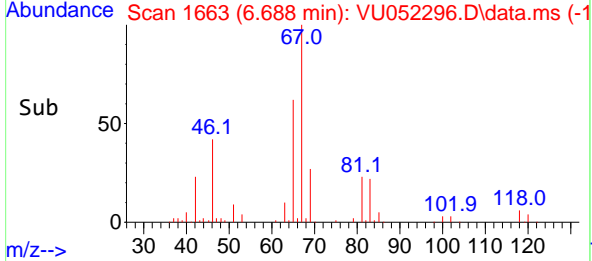
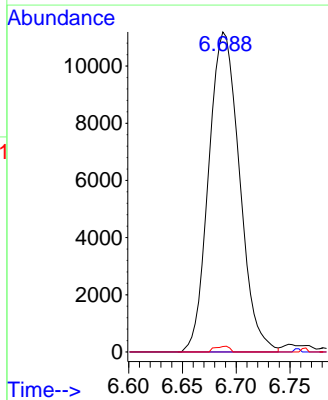
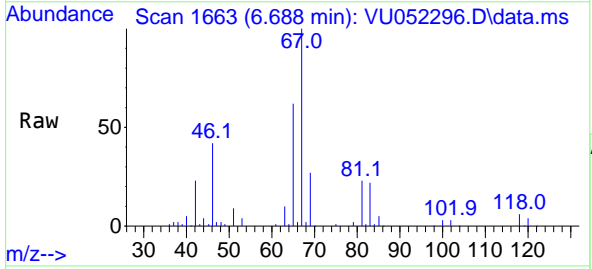
Instrument : MSVOA_U
 ClientSampleId : F5N31DL

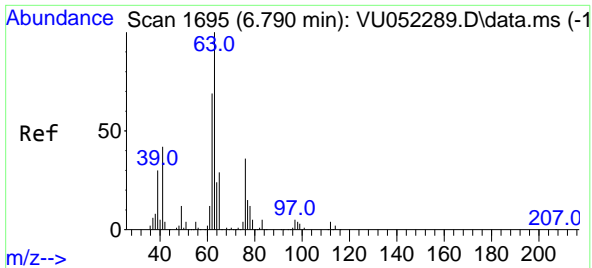
Tgt Ion: 62 Resp: 114626
 Ion Ratio Lower Upper
 62 100
 98 10.6 8.4 12.6



#35
 Methylcyclohexane
 Concen: 0.771 ug/L
 RT: 6.688 min Scan# 1663
 Delta R.T. -0.074 min
 Lab File: VU052296.D
 Acq: 09 Dec 2022 13:02

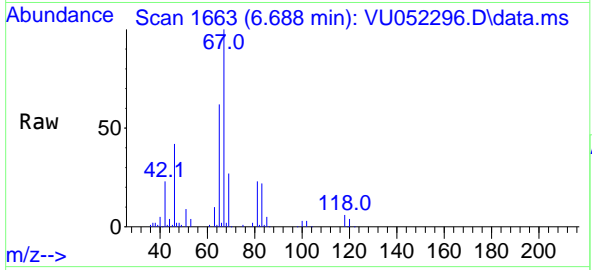
Tgt Ion: 83 Resp: 22332
 Ion Ratio Lower Upper
 83 100
 55 0.0 60.8 91.2#
 98 0.8 35.1 52.7#



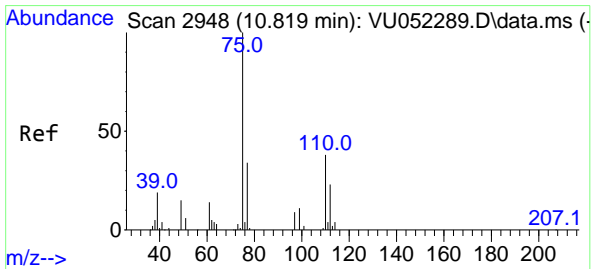
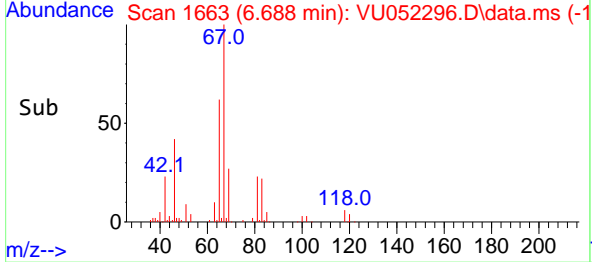
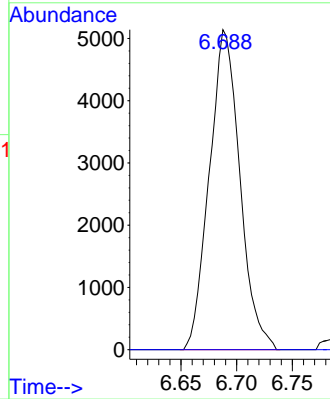


#37
 1,2-Dichloropropane
 Concen: 0.470 ug/L
 RT: 6.688 min Scan# 11
 Delta R.T. -0.102 min
 Lab File: VU052296.D
 Acq: 09 Dec 2022 13:02

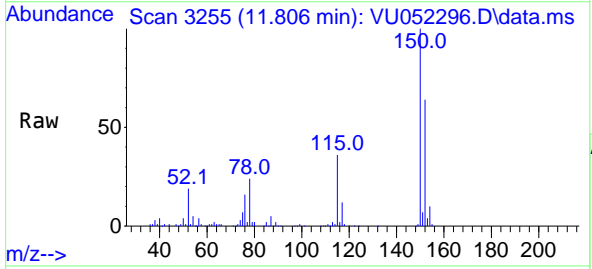
Instrument : MSVOA_U
 ClientSampleId : F5N31DL



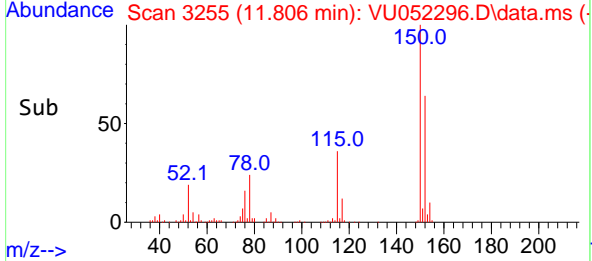
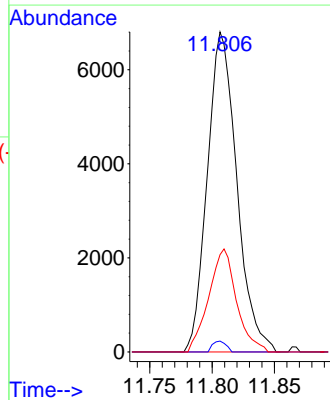
Tgt Ion: 63 Resp: 9811
 Ion Ratio Lower Upper
 63 100
 112 0.2 3.3 4.9#

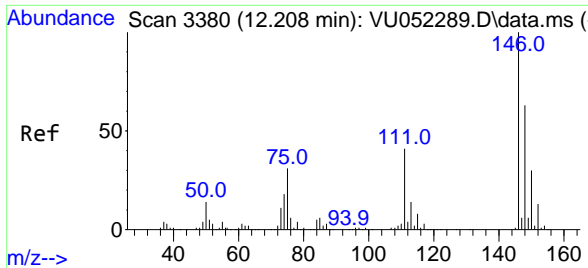


#61
 1,2,3-Trichloropropane
 Concen: 1.006 ug/L
 RT: 11.806 min Scan# 3255
 Delta R.T. 0.988 min
 Lab File: VU052296.D
 Acq: 09 Dec 2022 13:02



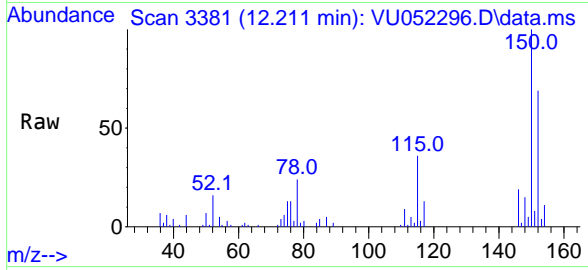
Tgt Ion: 75 Resp: 11216
 Ion Ratio Lower Upper
 75 100
 110 1.5 28.3 42.5#
 77 30.3 26.2 39.2





#67
 1,2-Dichlorobenzene
 Concen: 0.131 ug/L
 RT: 12.211 min Scan# 31
 Delta R.T. 0.004 min
 Lab File: VU052296.D
 Acq: 09 Dec 2022 13:02

Instrument :
 MSVOA_U
 ClientSampleId :
 F5N31DL



Tgt Ion:146 Resp: 3933

Ion	Ratio	Lower	Upper
146	100		
111	49.5	32.7	49.1#
148	79.6	50.6	75.8#

