

Data Path : Z:\voasrv\HPCHEM1\MSVOA\_U\Data\VU120922\  
 Data File : VU052292.D  
 Acq On : 09 Dec 2022 11:26  
 Operator : JC/MD  
 Sample : N5918-05 10X  
 Misc : 25.0mL/MSVOA\_U/WATER  
 ALS Vial : 6 Sample Multiplier: 1

Instrument :  
 MSVOA\_U  
 ClientSampleId :  
 C0EG3

Quant Time: Dec 09 23:10:57 2022  
 Quant Method : Z:\voasrv\HPCHEM1\MSVOA\_U\Method\SFAMUTR111822WMA.M  
 Quant Title : TRACE VOA SFAM1.0  
 QLast Update : Thu Dec 08 04:19:43 2022  
 Response via : Initial Calibration

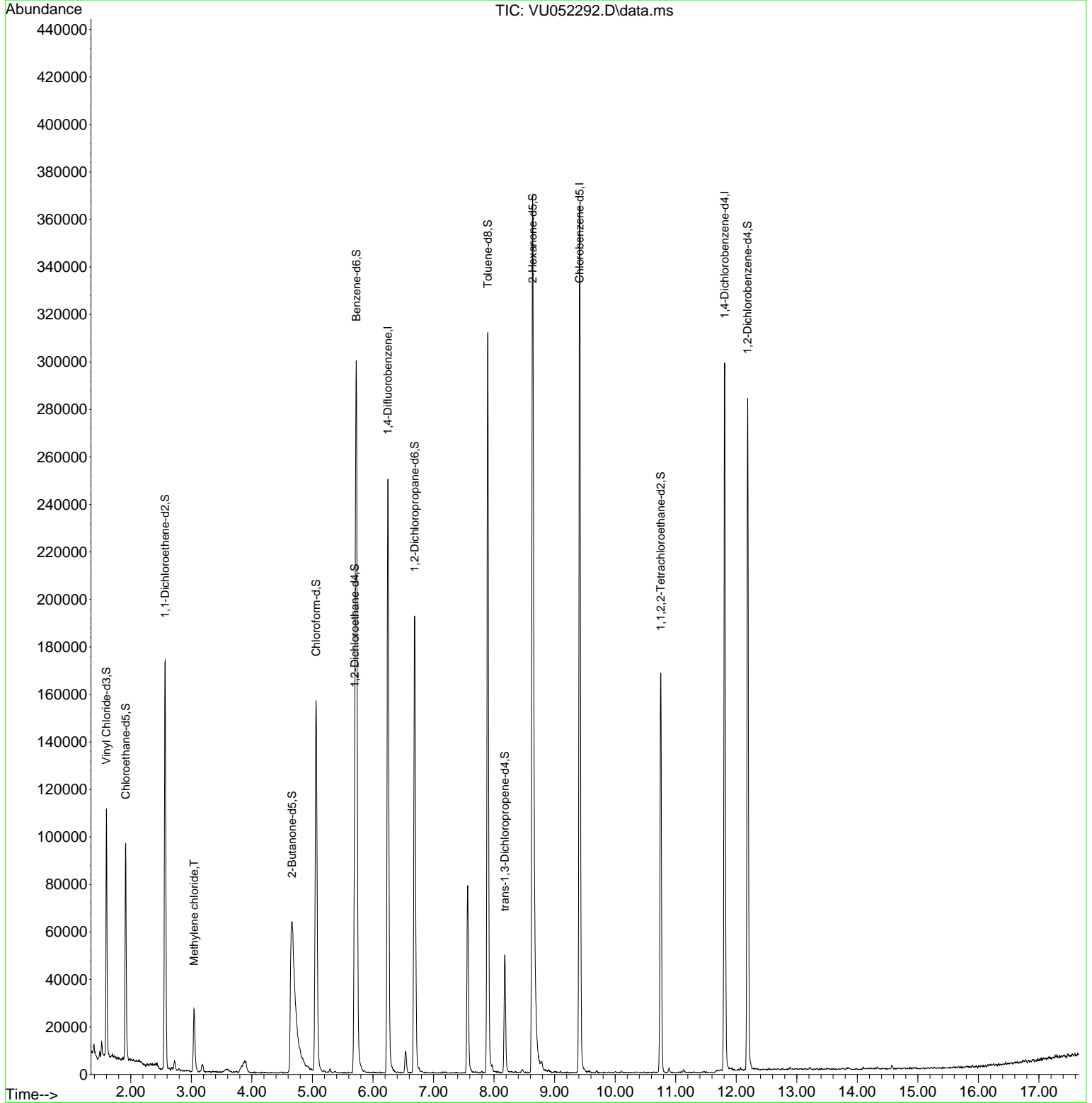
Compound	R.T.	QIon	Response	Conc	Units	Dev(Min)
Internal Standards						
1) 1,4-Difluorobenzene	6.247	114	210856	5.000	ug/L	0.00
28) Chlorobenzene-d5	9.414	117	213061	5.000	ug/L	0.00
58) 1,4-Dichlorobenzene-d4	11.809	152	82842	5.000	ug/L	0.00
System Monitoring Compounds						
4) Vinyl Chloride-d3	1.597	65	78001	3.803	ug/L	0.00
Spiked Amount	5.000	Range 40 - 130	Recovery	=	76.000%	
7) Chloroethane-d5	1.916	69	71498	4.488	ug/L	0.00
Spiked Amount	5.000	Range 65 - 130	Recovery	=	89.800%	
11) 1,1-Dichloroethene-d2	2.565	65	33359	4.538	ug/L	0.00
Spiked Amount	5.000	Range 60 - 125	Recovery	=	90.800%	
20) 2-Butanone-d5	4.662	46	188278	50.644	ug/L	0.03
Spiked Amount	50.000	Range 40 - 130	Recovery	=	101.280%	
24) Chloroform-d	5.060	84	153009	5.077	ug/L	0.00
Spiked Amount	5.000	Range 70 - 125	Recovery	=	101.600%	
26) 1,2-Dichloroethane-d4	5.700	65	78069	5.129	ug/L	0.00
Spiked Amount	5.000	Range 70 - 130	Recovery	=	102.600%	
32) Benzene-d6	5.726	84	295595	4.673	ug/L	0.00
Spiked Amount	5.000	Range 70 - 125	Recovery	=	93.400%	
36) 1,2-Dichloropropane-d6	6.687	67	100166	5.117	ug/L	0.00
Spiked Amount	5.000	Range 60 - 140	Recovery	=	102.400%	
41) Toluene-d8	7.896	98	218298	3.814	ug/L	0.00
Spiked Amount	5.000	Range 70 - 130	Recovery	=	76.200%	
43) trans-1,3-Dichloroprop...	8.179	79	29513	4.137	ug/L	0.00
Spiked Amount	5.000	Range 55 - 130	Recovery	=	82.800%	
46) 2-Hexanone-d5	8.636	63	141939	46.951	ug/L	0.00
Spiked Amount	50.000	Range 45 - 130	Recovery	=	93.900%	
56) 1,1,2,2-Tetrachloroeth...	10.751	84	88395	5.208	ug/L	0.00
Spiked Amount	5.000	Range 65 - 120	Recovery	=	104.200%	
66) 1,2-Dichlorobenzene-d4	12.189	152	80760	5.092	ug/L	0.00
Spiked Amount	5.000	Range 80 - 120	Recovery	=	101.800%	
Target Compounds						
16) Methylene chloride	3.044	84	13269	0.641	ug/L	93

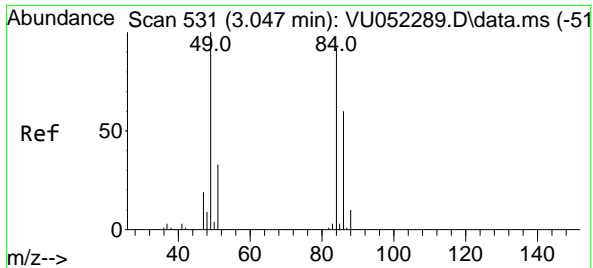
(#) = qualifier out of range (m) = manual integration (+) = signals summed

Data Path : Z:\voasrv\HPCHEM1\MSVOA\_U\Data\VU120922\  
 Data File : VU052292.D  
 Acq On : 09 Dec 2022 11:26  
 Operator : JC/MD  
 Sample : N5918-05 10X  
 Misc : 25.0mL/MSVOA\_U/WATER  
 ALS Vial : 6 Sample Multiplier: 1

Instrument :  
 MSVOA\_U  
 ClientSampleId :  
 C0EG3

Quant Time: Dec 09 23:10:57 2022  
 Quant Method : Z:\voasrv\HPCHEM1\MSVOA\_U\Method\SFAMUTR111822WMA.M  
 Quant Title : TRACE VOA SFAM1.0  
 QLast Update : Thu Dec 08 04:19:43 2022  
 Response via : Initial Calibration





Methylene chloride  
 Concen: 0.641 ug/L  
 RT: 3.044 min Scan# 51  
 Delta R.T. -0.003 min  
 Lab File: VU052292.D  
 Acq: 09 Dec 2022 11:26

Instrument : MSVOA\_U  
 ClientSampleId : C0EG3

Tgt Ion: 84 Resp: 13269

Ion	Ratio	Lower	Upper
84	100		
86	68.0	43.8	81.4
49	115.1	75.9	141.1

