

Data Path : Z:\voasrv\HPCHEM1\MSVOA_U\Data\VU120922\
 Data File : VU052326.D
 Acq On : 10 Dec 2022 01:15
 Operator : JC/MD
 Sample : N5979-10
 Misc : 25.0mL/MSVOA_U/WATER
 ALS Vial : 41 Sample Multiplier: 1

Instrument :
 MSVOA_U
 ClientSampleId :
 C0ER6

Integration Parameters: rteint.p

Integrator: RTE
 Smoothing : ON Filtering: 5
 Sampling : 1 Min Area: 3 % of largest Peak
 Start Thrs: 0.1 Max Peaks: 100
 Stop Thrs : 0 Peak Location: TOP

If leading or trailing edge < 100 prefer < Baseline drop else tangent >
 Peak separation: 5

Method : Z:\voasrv\HPCHEM1\MSVOA_U\Method\SFAMUTR111822WMA.M
 Title : TRACE VOA SFAM1.0

Signal : TIC: VU052326.D\data.ms

| peak # | R.T. min | first scan | max scan | last scan | PK TY | peak height | corr. area | corr. % max. | % of total |
|--------|----------|------------|----------|-----------|-------|-------------|------------|--------------|------------|
| 1 | 1.600 | 74 | 81 | 91 | rVB | 84363 | 94354 | 9.92% | 1.498% |
| 2 | 1.916 | 170 | 179 | 195 | rBV | 79070 | 107839 | 11.34% | 1.712% |
| 3 | 2.568 | 370 | 382 | 396 | rBV | 135922 | 223806 | 23.53% | 3.552% |
| 4 | 3.256 | 579 | 596 | 610 | rVB | 4158 | 14369 | 1.51% | 0.228% |
| 5 | 4.642 | 1012 | 1027 | 1065 | rBV | 116115 | 413111 | 43.43% | 6.557% |
| 6 | 5.060 | 1141 | 1157 | 1181 | rBV | 145796 | 329182 | 34.61% | 5.225% |
| 7 | 5.722 | 1342 | 1363 | 1394 | rBV2 | 279630 | 752926 | 79.16% | 11.951% |
| 8 | 6.247 | 1511 | 1526 | 1545 | rBV | 229238 | 445270 | 46.81% | 7.067% |
| 9 | 6.542 | 1607 | 1618 | 1630 | rBV3 | 15605 | 29008 | 3.05% | 0.460% |
| 10 | 6.687 | 1650 | 1663 | 1687 | rBV | 185707 | 370136 | 38.91% | 5.875% |
| 11 | 7.565 | 1924 | 1936 | 1956 | rBV | 75595 | 137318 | 14.44% | 2.180% |
| 12 | 7.896 | 2025 | 2039 | 2063 | rBV | 290930 | 511403 | 53.76% | 8.117% |
| 13 | 8.179 | 2115 | 2127 | 2145 | rBV | 48091 | 82295 | 8.65% | 1.306% |
| 14 | 8.636 | 2255 | 2269 | 2299 | rBV3 | 453616 | 951182 | 100.00% | 15.097% |
| 15 | 9.414 | 2499 | 2511 | 2533 | rBV | 344252 | 589081 | 61.93% | 9.350% |
| 16 | 10.751 | 2911 | 2927 | 2944 | rBV | 177980 | 289156 | 30.40% | 4.590% |
| 17 | 11.809 | 3240 | 3256 | 3279 | rBV | 292911 | 474917 | 49.93% | 7.538% |
| 18 | 12.188 | 3362 | 3374 | 3393 | rBV | 289961 | 485007 | 50.99% | 7.698% |

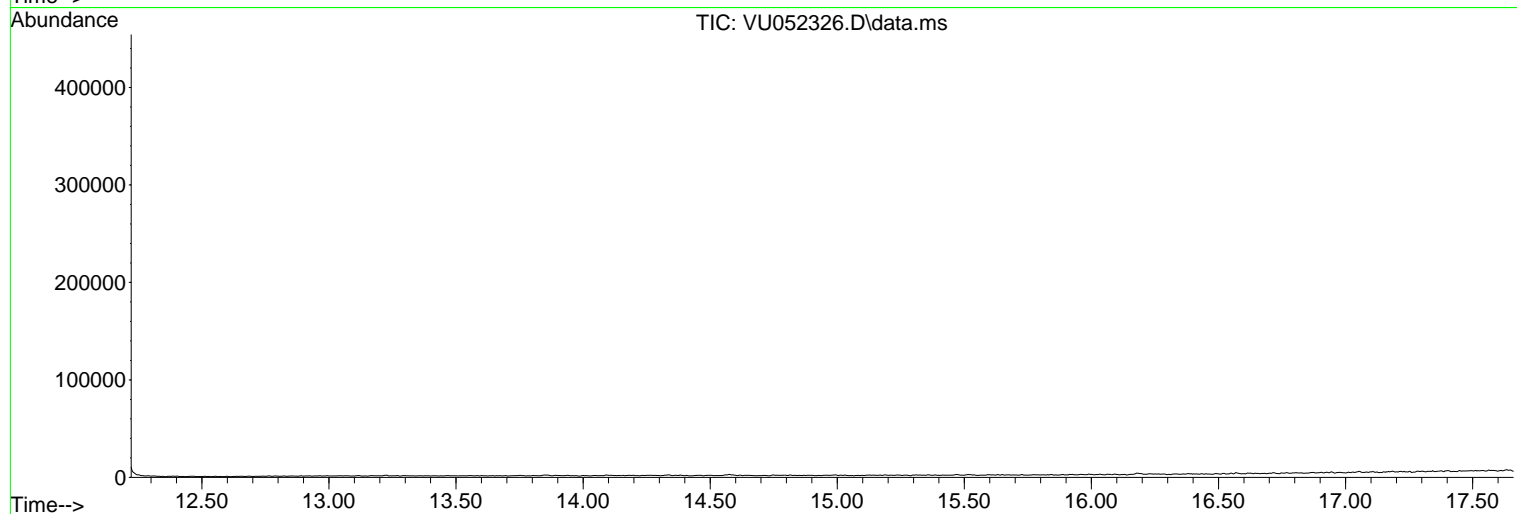
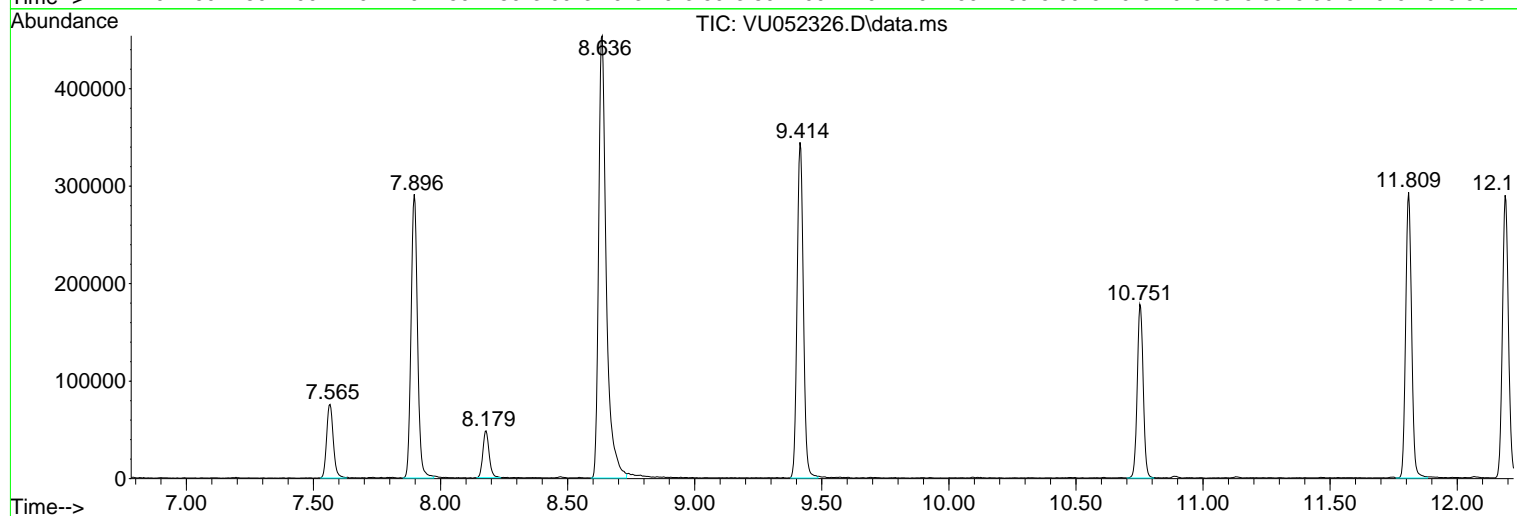
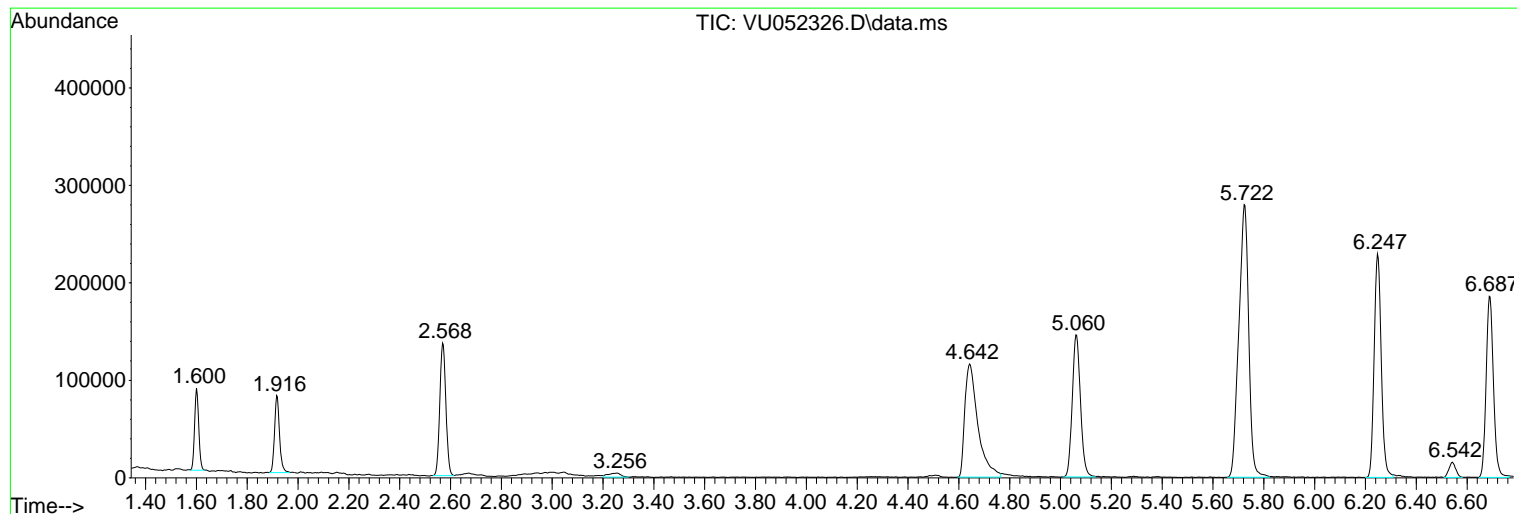
Sum of corrected areas: 6300360

Data Path : Z:\voasrv\HPCHEM1\MSVOA_U\Data\VU120922\
Data File : VU052326.D
Acq On : 10 Dec 2022 01:15
Operator : JC/MD
Sample : N5979-10
Misc : 25.0mL/MSVOA_U/WATER
ALS Vial : 41 Sample Multiplier: 1

Instrument :
MSVOA_U
ClientSampleId :
C0ER6

Quant Method : Z:\voasrv\HPCHEM1\MSVOA_U\Method\SFAMUTR111822WMA.M
Quant Title : TRACE VOA SFAM1.0

TIC Library : C:\Database\NIST20.L
TIC Integration Parameters: LSCINT.P



Library Search Compound Report

Data Path : Z:\voasrv\HPCHEM1\MSVOA_U\Data\VU120922\
Data File : VU052326.D
Acq On : 10 Dec 2022 01:15
Operator : JC/MD
Sample : N5979-10
Misc : 25.0mL/MSVOA_U/WATER
ALS Vial : 41 Sample Multiplier: 1

Instrument :
MSVOA_U
ClientSampleId :
C0ER6

Quant Method : Z:\voasrv\HPCHEM1\MSVOA_U\Method\SFAMUTR111822WMA.M
Quant Title : TRACE VOA SFAM1.0

TIC Library : C:\Database\NIST20.L
TIC Integration Parameters: LSCINT.P

No Library Search Compounds Detected

Data Path : Z:\voasrv\HPCHEM1\MSVOA_U\Data\VU120922\
Data File : VU052326.D
Acq On : 10 Dec 2022 01:15
Operator : JC/MD
Sample : N5979-10
Misc : 25.0mL/MSVOA_U/WATER
ALS Vial : 41 Sample Multiplier: 1

Instrument :
MSVOA_U
ClientSampleId :
C0ER6

Quant Method : Z:\voasrv\HPCHEM1\MSVOA_U\Method\SFAMUTR111822WMA.M
Quant Title : TRACE VOA SFAM1.0

TIC Library : C:\Database\NIST0.L
TIC Integration Parameters: LSCINT.P

| TIC Top Hit name | RT | EstConc | Units | Response | --Internal Standard-- | | |
|------------------|----|---------|-------|----------|-----------------------|----|-----------|
| | | | | | # | RT | Resp Conc |
