

Data Path : Z:\voasrv\HPCHEM1\MSVOA_U\Data\VU120924\
 Data File : VU062197.D
 Acq On : 10 Dec 2024 08:06
 Operator : MD/SY
 Sample : P5111-07
 Misc : 25mL/MSVOA_U/WATER
 ALS Vial : 53 Sample Multiplier: 1

Instrument :
 MSVOA_U
 ClientSampleId :
 BG456

Integration Parameters: rteint.p
 Integrator: RTE
 Smoothing : ON
 Sampling : 1
 Start Thrs: 0.1
 Stop Thrs : 0
 Filtering: 5
 Min Area: 3 % of Largest Peak
 Max Peaks: 100
 Peak Location: TOP

If leading or trailing edge < 100 prefer < Baseline drop else tangent >
 Peak separation: 5

Method : Z:\voasrv\HPCHEM1\MSVOA_U\Method\SFAMUTR120924WMA.M
 Title : TRACE VOA SFAM1.0

Signal : TIC: VU062197.D\data.ms

peak #	R.T. min	first scan	max scan	last scan	PK TY	peak height	corr. area	corr. % max.	% of total
1	1.595	86	95	112	rVB	45208	51950	14.75%	1.785%
2	1.907	184	192	210	rVB	32574	44033	12.50%	1.513%
3	2.448	352	360	369	rVB3	3153	4747	1.35%	0.163%
4	2.560	384	395	413	rBV	80338	130739	37.12%	4.492%
5	2.824	461	477	498	rBV2	9702	38671	10.98%	1.329%
6	3.692	737	747	760	rBB5	2803	6198	1.76%	0.213%
7	4.624	1027	1037	1066	rBV	42040	112149	31.84%	3.853%
8	5.052	1154	1170	1195	rBV	71369	158065	44.88%	5.431%
9	5.718	1358	1377	1403	rBV2	134027	352193	100.00%	12.101%
10	6.242	1528	1540	1566	rBV	116028	230651	65.49%	7.925%
11	6.541	1624	1633	1644	rBV4	6021	11034	3.13%	0.379%
12	6.682	1665	1677	1698	rBV	81723	159809	45.38%	5.491%
13	7.560	1939	1950	1976	rBV2	37626	70221	19.94%	2.413%
14	7.891	2041	2053	2071	rBV	169491	302302	85.83%	10.387%
15	7.968	2072	2077	2093	rVB2	4967	8659	2.46%	0.298%
16	8.174	2131	2141	2159	rBV2	22298	39853	11.32%	1.369%
17	8.547	2246	2257	2269	rBB3	8095	13148	3.73%	0.452%
18	8.627	2272	2282	2321	rBV4	133927	292565	83.07%	10.053%
19	9.409	2514	2525	2547	rBV	162969	284103	80.67%	9.762%
20	10.746	2930	2941	2959	rBV	59113	97574	27.70%	3.353%
21	11.804	3259	3270	3294	rBV	151389	251599	71.44%	8.645%
22	12.183	3376	3388	3409	rBV	144456	250098	71.01%	8.593%

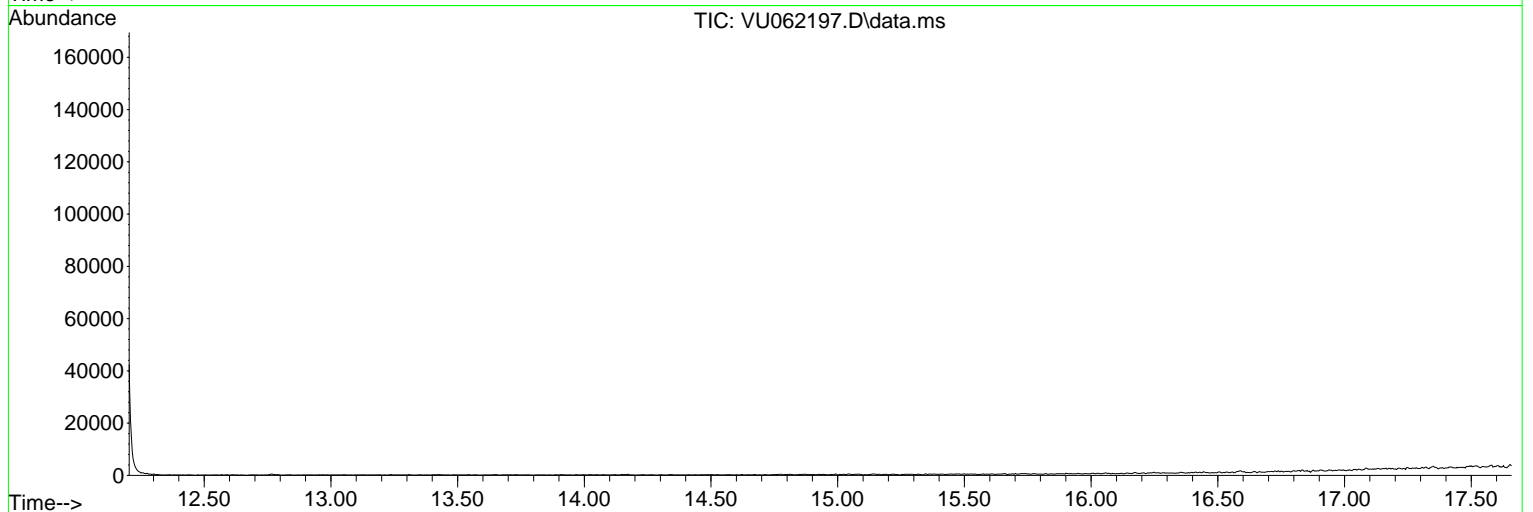
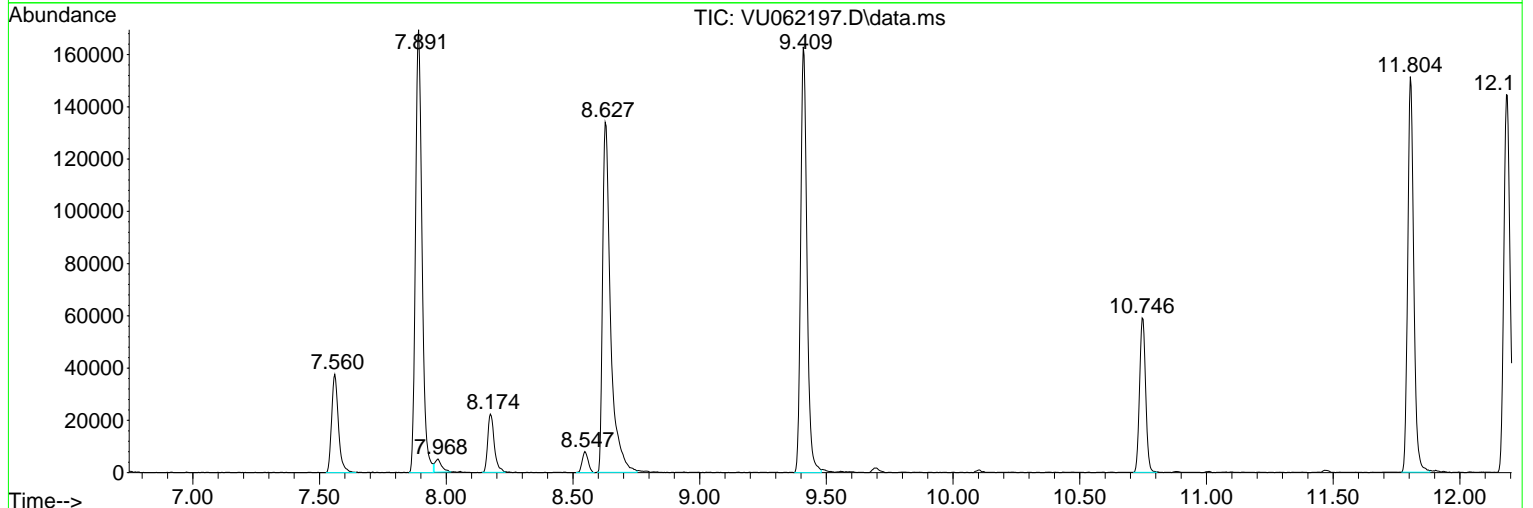
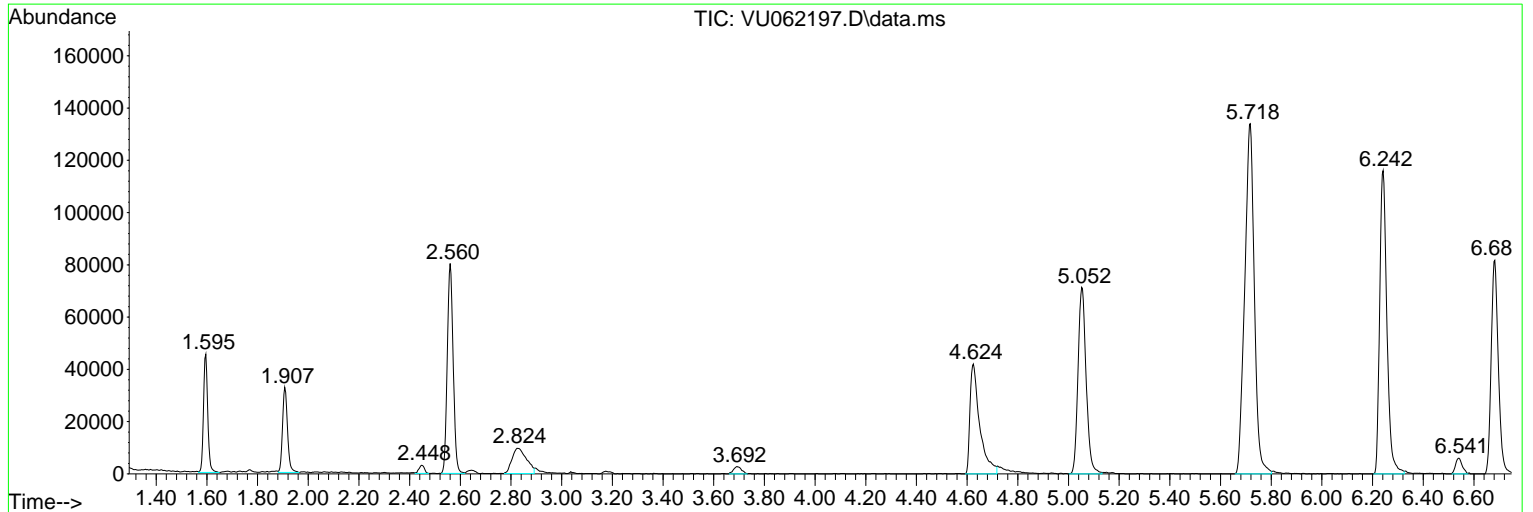
Sum of corrected areas: 2910361

Data Path : Z:\voasrv\HPCHEM1\MSVOA_U\Data\VU120924\
 Data File : VU062197.D
 Acq On : 10 Dec 2024 08:06
 Operator : MD/SY
 Sample : P5111-07
 Misc : 25mL/MSVOA_U/WATER
 ALS Vial : 53 Sample Multiplier: 1

Instrument :
 MSVOA_U
ClientSampleId :
 BG456

Quant Method : Z:\voasrv\HPCHEM1\MSVOA_U\Method\SFAMUTR120924WMA.M
 Quant Title : TRACE VOA SFAM1.0

TIC Library : C:\Database\NI ST20.L
 TIC Integration Parameters: LSCINT.P



Data Path : Z:\voasrv\HPCHEM1\MSVOA_U\Data\VU120924\
Data File : VU062197.D
Acq On : 10 Dec 2024 08:06
Operator : MD/SY
Sample : P5111-07
Misc : 25mL/MSVOA_U/WATER
ALS Vial : 53 Sample Multiplier: 1

Instrument :
MSVOA_U
ClientSampleId :
BG456

Quant Method : Z:\voasrv\HPCHEM1\MSVOA_U\Method\SFAMUTR120924WMA.M
Quant Title : TRACE VOA SFAM1.0

TIC Library : C:\Database\NI ST20.L
TIC Integration Parameters: LSCINT.P

No Library Search Compounds Detected

Data Path : Z:\voasrv\HPCHEM1\MSVOA_U\Data\VU120924\
Data File : VU062197.D
Acq On : 10 Dec 2024 08:06
Operator : MD/SY
Sample : P5111-07
Misc : 25mL/MSVOA_U/WATER
ALS Vial : 53 Sample Multiplier: 1

Instrument :
MSVOA_U
ClientSampleId :
BG456

Quant Method : Z:\voasrv\HPCHEM1\MSVOA_U\Method\SFAMUTR120924WMA.M
Quant Title : TRACE VOA SFAM1.0

TIC Library : C:\Database\NIST20.L
TIC Integration Parameters: LSCINT.P

TIC Top Hit name	RT	EstConc	Units	Response	--Internal Standard--		
					#	RT	Resp Conc
