

Data Path : Z:\VOASRV\HPCHEM1\MSVOA U\DATA\VU121019\
 Data File : VU036119.D
 Acq On : 11 Dec 2019 06:38
 Operator : JC/MD
 Sample : K6214-09
 Misc : 25.0mL/MSVOA U/WATER
 ALS Vial : 52 Sample Multiplier: 1

Instrument :
 MSVOA_U
 ClientSampleID :
 BD811

Quant Time: Dec 11 07:46:13 2019
 Quant Method : Z:\VOASRV\HPCHEM1\MSVOA_U\METHOD\SOMUTR120919WMA.M
 Quant Title : TRACE VOA SOM01.0
 QLast Update : Wed Dec 11 07:30:58 2019
 Response via : Initial Calibration

Internal Standards	R.T.	QIon	Response	Conc	Units	Dev(Min)
1) 1,4-Difluorobenzene	6.29	114	260267	5.00	ug/L	0.00
28) Chlorobenzene-d5	9.45	117	291266	5.00	ug/L	0.00
60) 1,4-Dichlorobenzene-d4	11.84	152	97281	5.00	ug/L	0.00

System Monitoring Compounds

4) Vinyl Chloride-d3	1.61	65	120870	5.21	ug/L	0.00
Spiked Amount	5.000	Range	40 - 130	Recovery	=	104.20%
7) Chloroethane-d5	1.93	69	109529	4.50	ug/L	0.00
Spiked Amount	5.000	Range	65 - 130	Recovery	=	90.00%
11) 1,1-Dichloroethene-d2	2.59	63	122138	2.88	ug/L	0.00
Spiked Amount	5.000	Range	60 - 125	Recovery	=	57.60%#
20) 2-Butanone-d5	4.69	46	243308	61.55	ug/L	0.00
Spiked Amount	50.000	Range	40 - 130	Recovery	=	123.10%
24) Chloroform-d	5.11	84	189340	5.03	ug/L	0.00
Spiked Amount	5.000	Range	70 - 125	Recovery	=	100.60%
26) 1,2-Dichloroethane-d4	5.75	65	101692	5.22	ug/L	0.00
Spiked Amount	5.000	Range	70 - 130	Recovery	=	104.40%
32) Benzene-d6	5.77	84	352051	4.78	ug/L	0.00
Spiked Amount	5.000	Range	70 - 125	Recovery	=	95.60%
36) 1,2-Dichloropropane-d6	6.73	67	115532	5.20	ug/L	0.00
Spiked Amount	5.000	Range	60 - 140	Recovery	=	104.00%
41) Toluene-d8	7.93	98	275574	4.05	ug/L	0.00
Spiked Amount	5.000	Range	70 - 130	Recovery	=	81.00%
43) trans-1,3-Dichloropropene-	8.21	79	39617	4.28	ug/L	0.00
Spiked Amount	5.000	Range	55 - 130	Recovery	=	85.60%
46) 2-Hexanone-d5	8.68	63	188731	56.29	ug/L	0.00
Spiked Amount	50.000	Range	45 - 130	Recovery	=	112.58%
57) 1,1,2,2-Tetrachloroethane-	10.78	84	109109	5.33	ug/L	0.00
Spiked Amount	5.000	Range	65 - 120	Recovery	=	106.60%
64) 1,2-Dichlorobenzene-d4	12.22	152	95795	5.12	ug/L	0.00
Spiked Amount	5.000	Range	80 - 120	Recovery	=	102.40%

Target Compounds

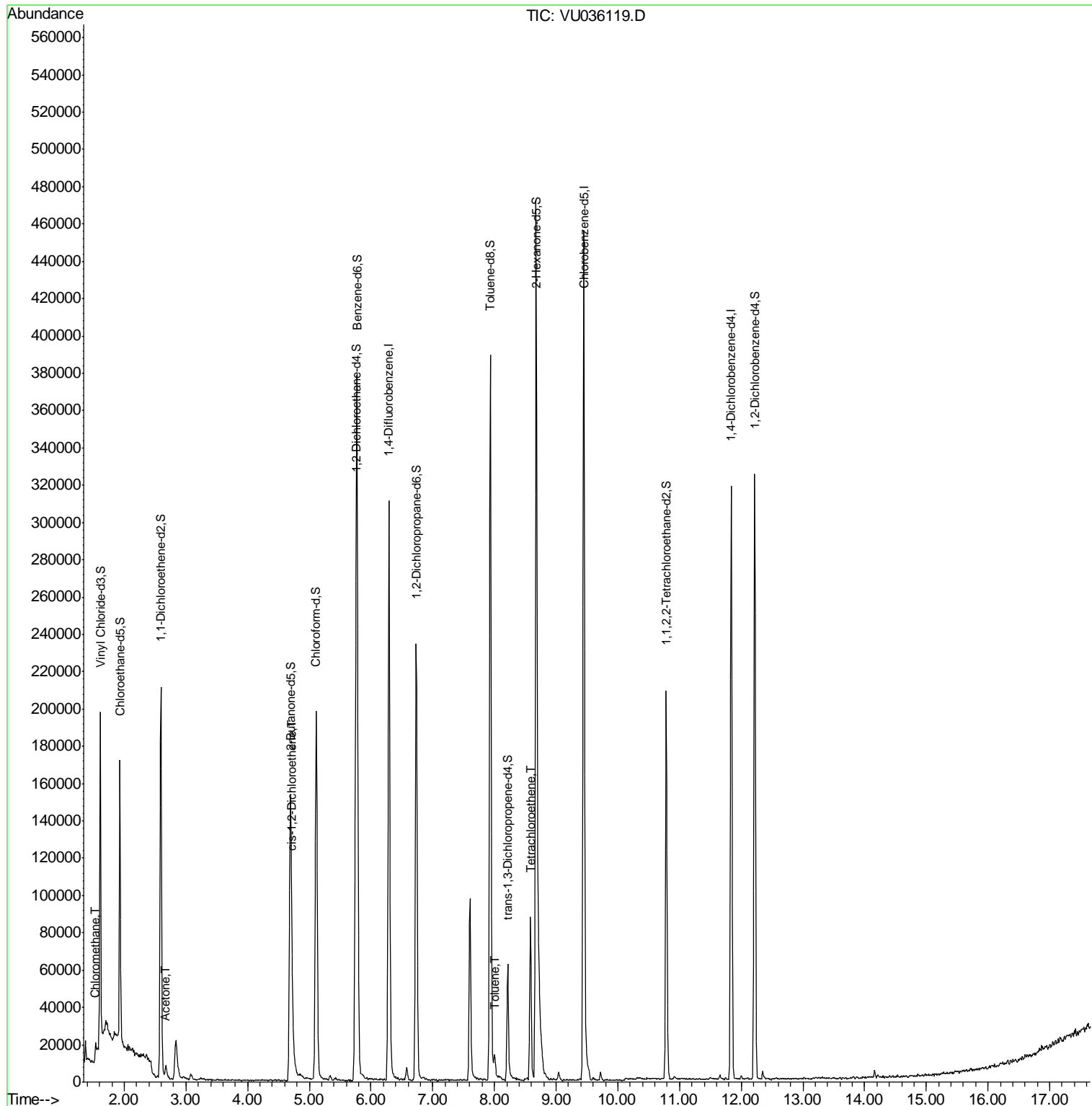
Target Compounds	R.T.	QIon	Response	Conc	Units	Ovalue
3) Chloromethane	1.54	50	4623	0.185	ug/L	98
13) Acetone	2.67	43	7528	1.500	ug/L	97
22) cis-1,2-Dichloroethene	4.72	96	5588	0.275	ug/L	84
42) Toluene	8.00	91	7568	0.089	ug/L	86
47) Tetrachloroethene	8.58	164	22512	1.120	ug/L	95

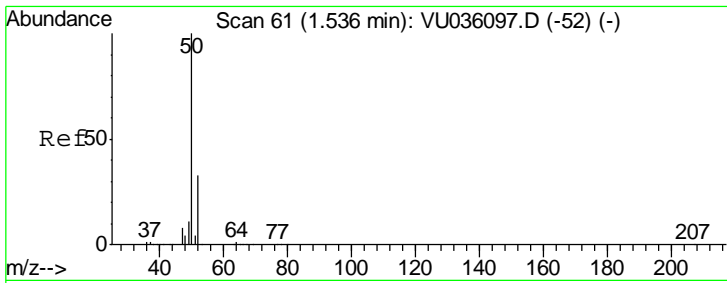
(#) = qualifier out of range (m) = manual integration (+) = signals summed

Data Path : Z:\VOASRV\HPCHEM1\MSVOA U\DATA\VU121019\
 Data File : VU036119.D
 Acq On : 11 Dec 2019 06:38
 Operator : JC/MD
 Sample : K6214-09
 Misc : 25.0mL/MSVOA U/WATER
 ALS Vial : 52 Sample Multiplier: 1

Instrument :
 MSVOA_U
 ClientSampled :
 BD811

Quant Time: Dec 11 07:46:13 2019
 Quant Method : Z:\VOASRV\HPCHEM1\MSVOA_U\METHOD\SOMUTR120919WMA.M
 Quant Title : TRACE VOA SOM01.0
 QLast Update : Wed Dec 11 07:30:58 2019
 Response via : Initial Calibration

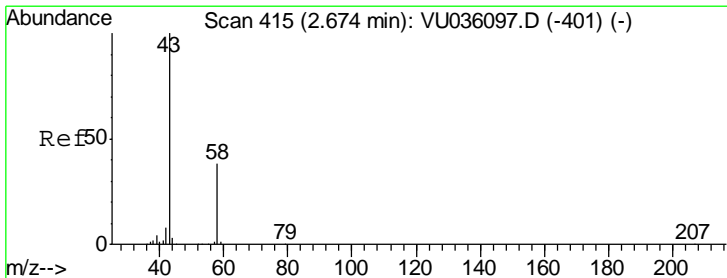
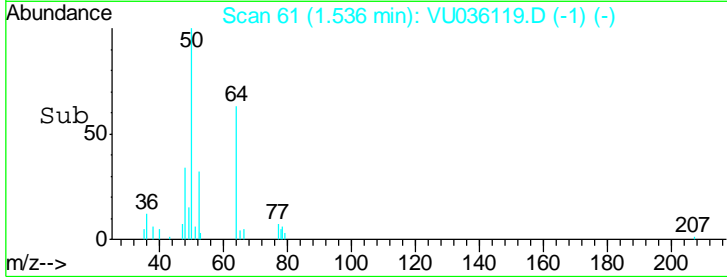
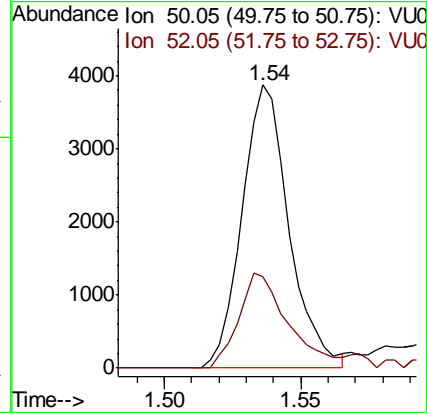
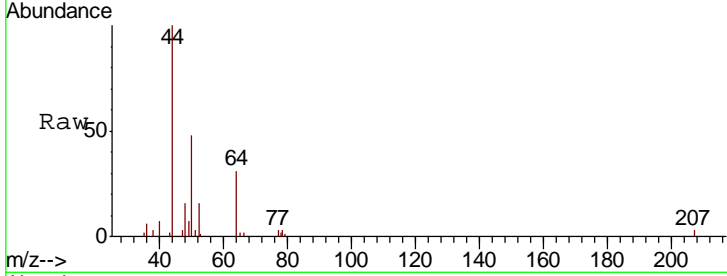




#3
 Chloromethane
 Concen: 0.185 ug/L
 RT: 1.54 min Scan# 61
 Delta R.T. 0.00 min
 Lab File: VU036119.D
 Acq: 11 Dec 2019 06:38

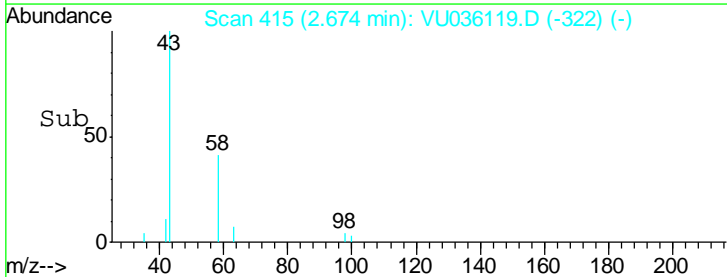
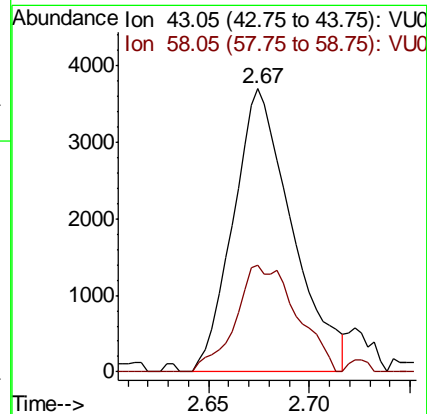
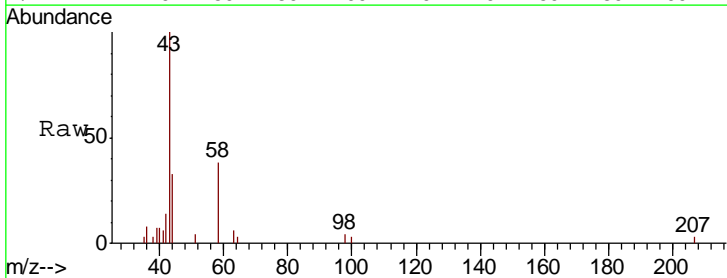
Instrument :
 MSVOA_U
 ClientSampled :
 BD811

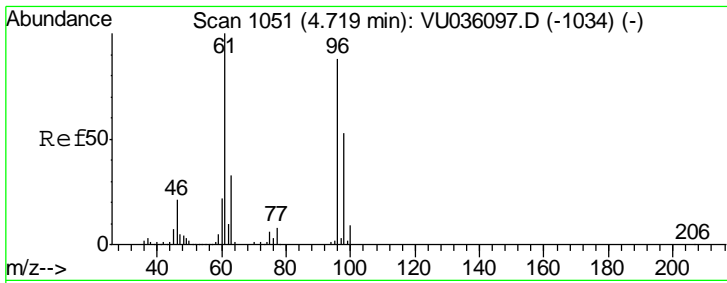
Tgt Ion: 50 Resp: 4623
 Ion Ratio Lower Upper
 50 100
 52 32.5 23.6 43.8



#13
 Acetone
 Concen: 1.500 ug/L
 RT: 2.67 min Scan# 415
 Delta R.T. 0.00 min
 Lab File: VU036119.D
 Acq: 11 Dec 2019 06:38

Tgt Ion: 43 Resp: 7528
 Ion Ratio Lower Upper
 43 100
 58 39.0 0.0 74.2

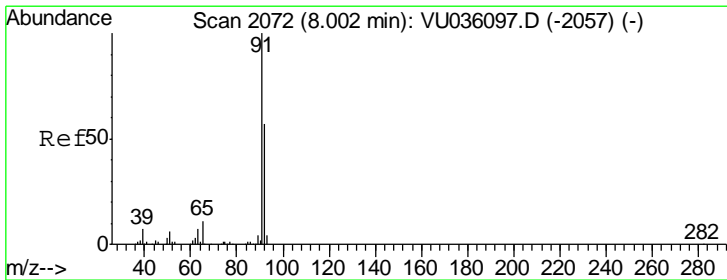
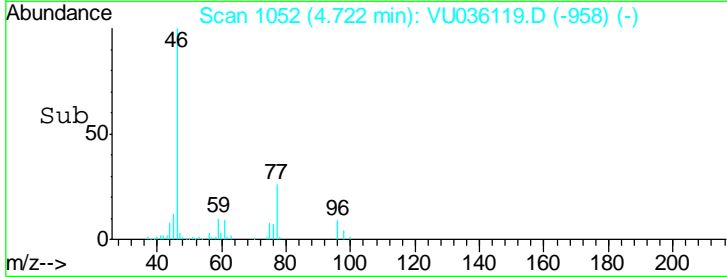
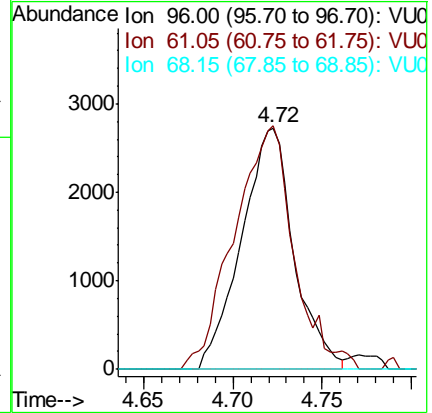
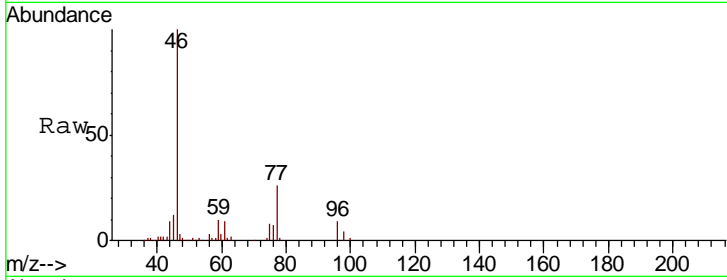




#22
 cis-1,2-Dichloroethene
 Concen: 0.275 ug/L
 RT: 4.72 min Scan# 1052
 Delta R.T. 0.00 min
 Lab File: VU036119.D
 Acq: 11 Dec 2019 06:38

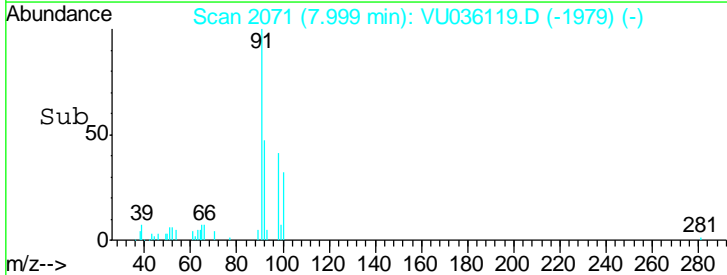
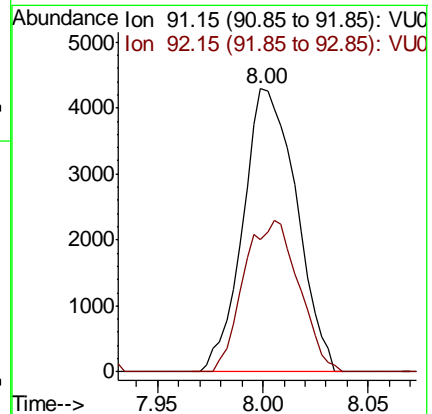
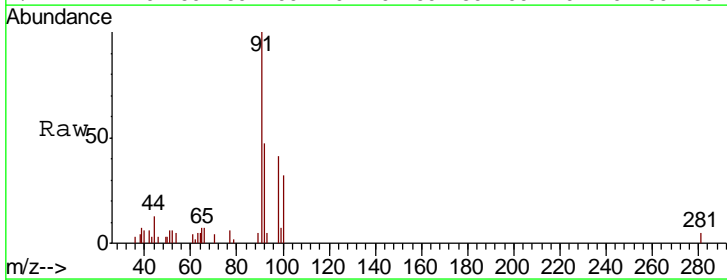
Instrument :
 MSVOA_U
 ClientSampled :
 BD811

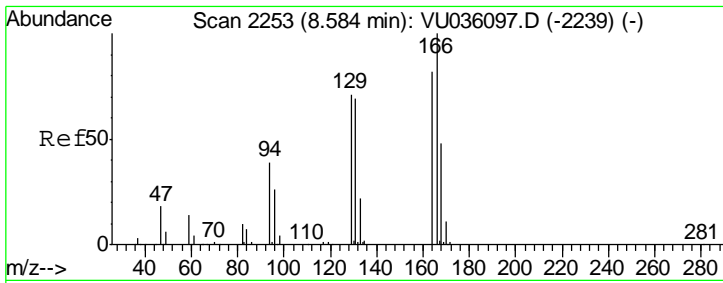
Tgt Ion	Resp	Lower	Upper
96	5588		
96	100		
61	101.0	83.0	154.2
68	0.0	0.0	0.0



#42
 Toluene
 Concen: 0.089 ug/L
 RT: 8.00 min Scan# 2071
 Delta R.T. -0.00 min
 Lab File: VU036119.D
 Acq: 11 Dec 2019 06:38

Tgt Ion	Resp	Lower	Upper
91	7568		
91	100		
92	46.9	40.0	74.4

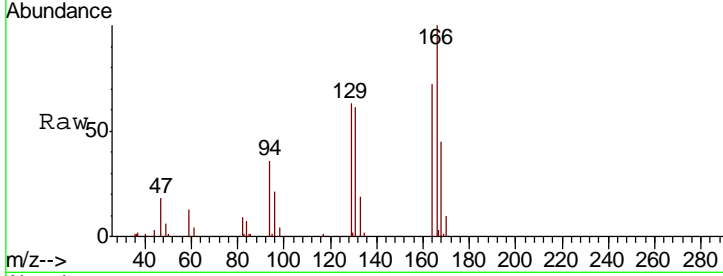




#47

Tetrachloroethene
 Concen: 1.120 ug/L
 RT: 8.58 min Scan# 2253
 Delta R.T. 0.00 min
 Lab File: VU036119.D
 Acq: 11 Dec 2019 06:38

Instrument :
 MSVOA_U
 ClientSampled :
 BD811



Tot Ion: 164 Resp: 22512

Ion	Ratio	Lower	Upper
164	100		
129	87.8	63.1	117.3
131	84.3	61.5	114.1
166	139.2	91.0	169.0

