

Data Path : Z:\VOASRV\HPCHEM1\MSVOA U\DATA\VU121019\
 Data File : VU036115.D
 Acq On : 11 Dec 2019 05:00
 Operator : JC/MD
 Sample : K6214-02
 Misc : 25.0mL/MSVOA U/WATER
 ALS Vial : 48 Sample Multiplier: 1

Instrument :
 MSVOA_U
 ClientSampled :
 BD804

Integration Parameters: rteint.p
 Integrator: RTE
 Smoothing : ON Filtering: 5
 Sampling : 1 Min Area: 3 % of largest Peak
 Start Thrs: 0.1 Max Peaks: 100
 Stop Thrs : 0 Peak Location: TOP

If leading or trailing edge < 100 prefer < Baseline drop else tangent >
 Peak separation: 5

Method : Z:\VOASRV\HPCHEM1\MSVOA_U\METHOD\SOMUTR120919WMA.M
 Title : TRACE VOA SOM01.0

Signal : TIC

peak #	R.T. min	first scan	max scan	last scan	PK TY	peak height	corr. area	corr. % max.	% of total
1	1.372	4	10	18	rBV3	10208	11408	1.15%	0.142%
2	1.539	56	62	72	rBV2	9838	13605	1.37%	0.169%
3	1.613	78	85	94	rBV	173649	187715	18.86%	2.332%
4	1.932	176	184	196	rBV	160671	205101	20.60%	2.548%
5	2.594	379	390	404	rBV	218387	358208	35.99%	4.451%
6	2.665	404	412	424	rVB3	6761	12975	1.30%	0.161%
7	4.687	1026	1041	1062	rBV	151781	418933	42.09%	5.205%
8	5.115	1157	1174	1200	rBV2	201117	480660	48.29%	5.972%
9	5.771	1357	1378	1401	rBV2	371284	986054	99.06%	12.252%
10	6.292	1524	1540	1563	rBV	316938	624123	62.70%	7.755%
11	6.732	1662	1677	1696	rBV	236680	476332	47.85%	5.918%
12	7.603	1935	1948	1963	rBV	99515	182736	18.36%	2.270%
13	7.935	2036	2051	2068	rBV	386374	720179	72.35%	8.948%
14	8.214	2126	2138	2161	rBV	60561	120593	12.11%	1.498%
15	8.584	2242	2253	2269	rVB2	76226	130753	13.14%	1.625%
16	8.697	2269	2288	2326	rBV2	240864	995416	100.00%	12.368%
17	9.449	2509	2522	2558	rVB	439792	873346	87.74%	10.851%
18	10.787	2926	2938	2961	rVB2	191790	347426	34.90%	4.317%
19	11.844	3253	3267	3285	rVB	256458	451976	45.41%	5.616%
20	12.224	3367	3385	3401	rBV	255329	450812	45.29%	5.601%

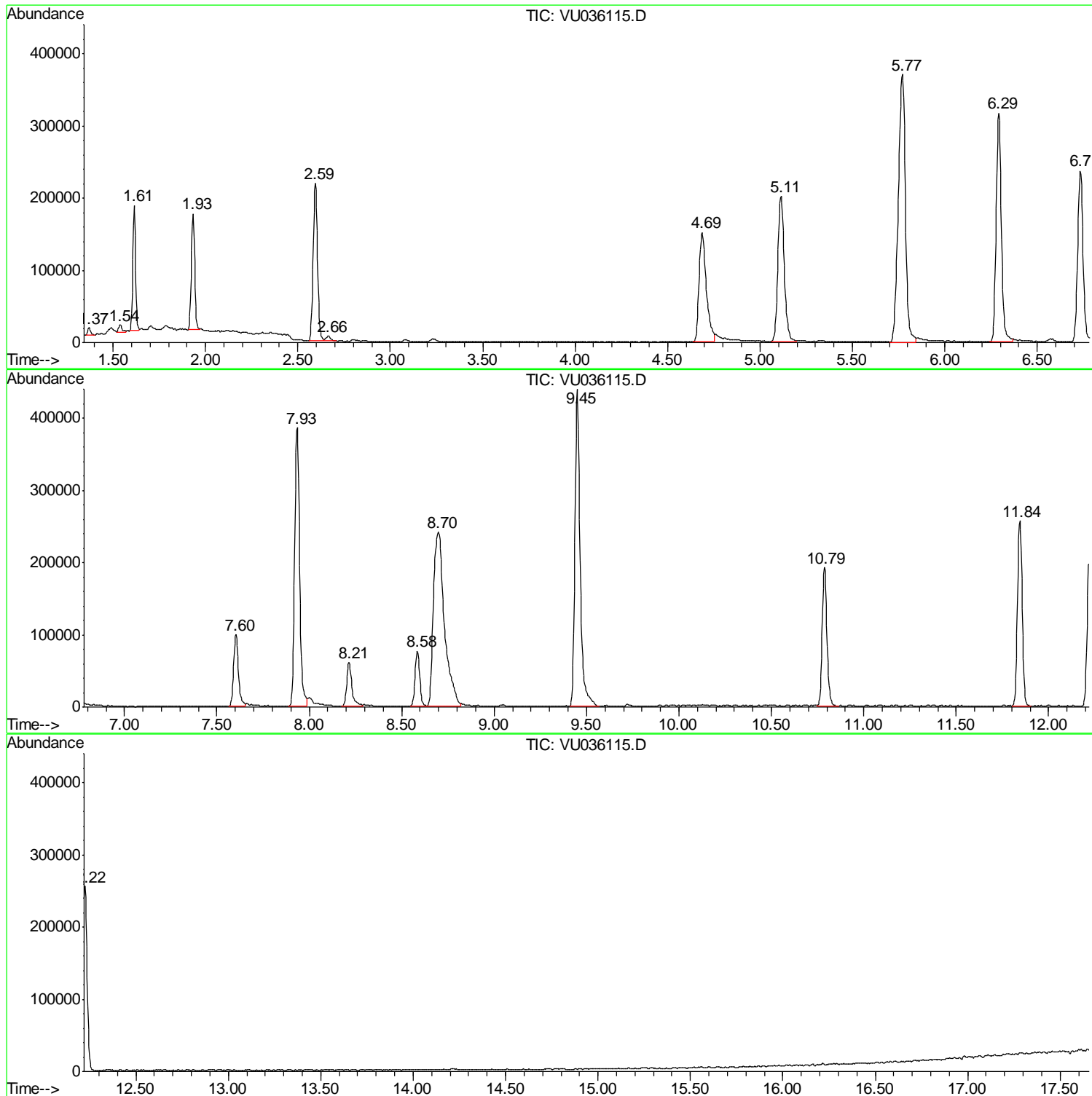
Sum of corrected areas: 8048351

Data Path : Z:\VOASRV\HPCHEM1\MSVOA U\DATA\VU121019\
Data File : VU036115.D
Acq On : 11 Dec 2019 05:00
Operator : JC/MD
Sample : K6214-02
Misc : 25.0mL/MSVOA U/WATER
ALS Vial : 48 Sample Multiplier: 1

Instrument :
MSVOA_U
ClientSampled :
BD804

Quant Method : Z:\VOASRV\HPCHEM1\MSVOA_U\METHOD\SOMUTR120919WMA.M
Quant Title : TRACE VOA SOM01.0

TIC Library : C:\DATABASE\NIST11.L
TIC Integration Parameters: LSCINT.P



Data Path : Z:\VOASRV\HPCHEM1\MSVOA_U\DATA\VU121019\
Data File : VU036115.D
Acq On : 11 Dec 2019 05:00
Operator : JC/MD
Sample : K6214-02
Misc : 25.0mL/MSVOA_U/WATER
ALS Vial : 48 Sample Multiplier: 1

Instrument :
MSVOA_U
ClientSampled :
BD804

Quant Method : Z:\VOASRV\HPCHEM1\MSVOA_U\METHOD\SOMUTR120919WMA.M
Quant Title : TRACE VOA SOM01.0

TIC Library : C:\DATABASE\NIST11.L
TIC Integration Parameters: LSCINT.P

No Library Search Compounds Detected

Data Path : Z:\VOASRV\HPCHEM1\MSVOA_U\DATA\VU121019\
Data File : VU036115.D
Acq On : 11 Dec 2019 05:00
Operator : JC/MD
Sample : K6214-02
Misc : 25.0mL/MSVOA_U/WATER
ALS Vial : 48 Sample Multiplier: 1

Instrument :
MSVOA_U
ClientSampleId :
BD804

Quant Method : Z:\VOASRV\HPCHEM1\MSVOA_U\METHOD\SOMUTR120919WMA.M
Quant Title : TRACE VOA SOM01.0

TIC Library : C:\DATABASE\NIST11.L
TIC Integration Parameters: LSCINT.P

TIC Top Hit name	RT	EstConc	Units	Response	--Internal Standard--			
					#	RT	Resp	Conc
