

Data Path : Z:\VOASRV\HPCHEM1\MSVOA U\DATA\VU121020\  
 Data File : VU041565.D  
 Acq On : 11 Dec 2020 03:25  
 Operator : SY/MD  
 Sample : L5027-05  
 Misc : 25.0mL/MSVOA U/WATER  
 ALS Vial : 40 Sample Multiplier: 1

Instrument :  
 MSVOA\_U  
 ClientSampled :  
 GB1H6

Quant Time: Dec 11 08:16:34 2020  
 Quant Method : Z:\VOASRV\HPCHEM1\MSVOA\_U\METHOD\SOMUTR120420WMA.M  
 Quant Title : TRACE VOA SOM01.0  
 QLast Update : Fri Dec 11 07:33:47 2020  
 Response via : Initial Calibration

Internal Standards	R.T.	QIon	Response	Conc	Units	Dev(Min)
1) 1,4-Difluorobenzene	6.26	114	39520	5.00	ug/L	0.00
28) Chlorobenzene-d5	9.42	117	44488	5.00	ug/L	0.00
60) 1,4-Dichlorobenzene-d4	11.81	152	21950	5.00	ug/L	0.00

## System Monitoring Compounds

4) Vinyl Chloride-d3	1.60	65	8971	4.42	ug/L	0.00
Spiked Amount	5.000	Range	40 - 130	Recovery	=	88.40%
7) Chloroethane-d5	1.92	69	8628	4.84	ug/L	0.00
Spiked Amount	5.000	Range	65 - 130	Recovery	=	96.80%
11) 1,1-Dichloroethene-d2	2.58	63	18114	3.68	ug/L	0.00
Spiked Amount	5.000	Range	60 - 125	Recovery	=	73.60%
20) 2-Butanone-d5	4.66	46	25686	33.75	ug/L	0.00
Spiked Amount	50.000	Range	40 - 130	Recovery	=	67.50%
24) Chloroform-d	5.09	84	25031	4.46	ug/L	0.00
Spiked Amount	5.000	Range	70 - 125	Recovery	=	89.20%
26) 1,2-Dichloroethane-d4	5.72	65	17768	4.72	ug/L	0.00
Spiked Amount	5.000	Range	70 - 130	Recovery	=	94.40%
32) Benzene-d6	5.75	84	35904	3.62	ug/L	0.00
Spiked Amount	5.000	Range	70 - 125	Recovery	=	72.40%
36) 1,2-Dichloropropane-d6	6.70	67	9538	3.29	ug/L	0.00
Spiked Amount	5.000	Range	60 - 140	Recovery	=	65.80%
41) Toluene-d8	7.91	98	43016	4.43	ug/L	0.00
Spiked Amount	5.000	Range	70 - 130	Recovery	=	88.60%
43) trans-1,3-Dichloropropene-	8.19	79	6859	3.99	ug/L	0.00
Spiked Amount	5.000	Range	55 - 130	Recovery	=	79.80%
46) 2-Hexanone-d5	8.64	63	22525	31.52	ug/L	0.00
Spiked Amount	50.000	Range	45 - 130	Recovery	=	63.04%
57) 1,1,2,2-Tetrachloroethane-	10.75	84	11822	3.70	ug/L	0.00
Spiked Amount	5.000	Range	65 - 120	Recovery	=	74.00%
64) 1,2-Dichlorobenzene-d4	12.19	152	19362	5.16	ug/L	0.00
Spiked Amount	5.000	Range	80 - 120	Recovery	=	103.20%

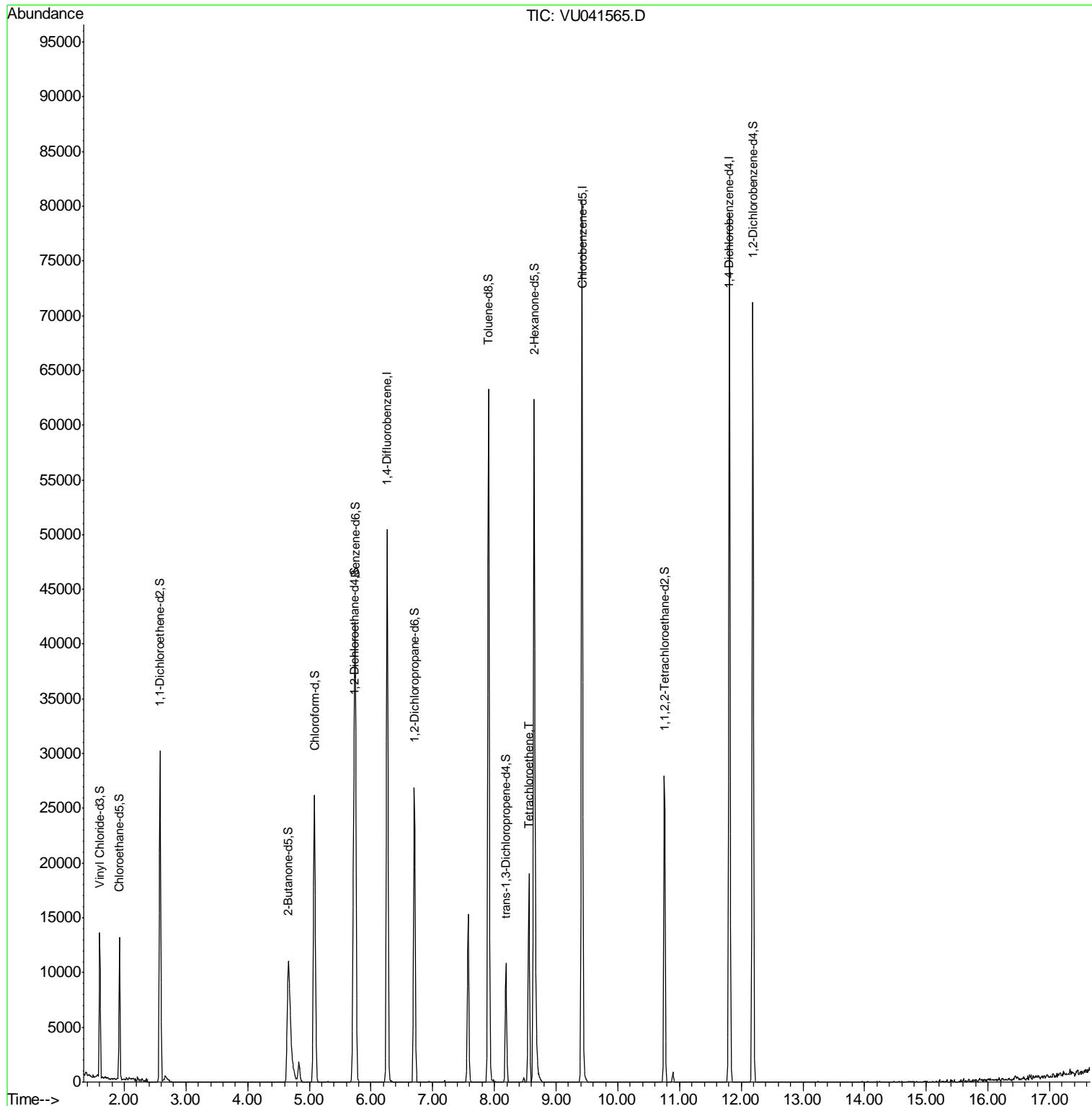
Target Compounds					Ovalue
47) Tetrachloroethene	8.56	164	4434	1.689 ug/L	91

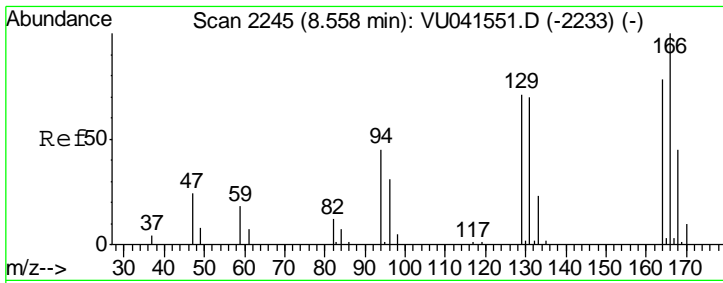
(#) = qualifier out of range (m) = manual integration (+) = signals summed

Data Path : Z:\VOASRV\HPCHEM1\MSVOA U\DATA\VU121020\  
 Data File : VU041565.D  
 Acq On : 11 Dec 2020 03:25  
 Operator : SY/MD  
 Sample : L5027-05  
 Misc : 25.0mL/MSVOA U/WATER  
 ALS Vial : 40 Sample Multiplier: 1

Instrument :  
 MSVOA\_U  
 Client Sampled :  
 GB1H6

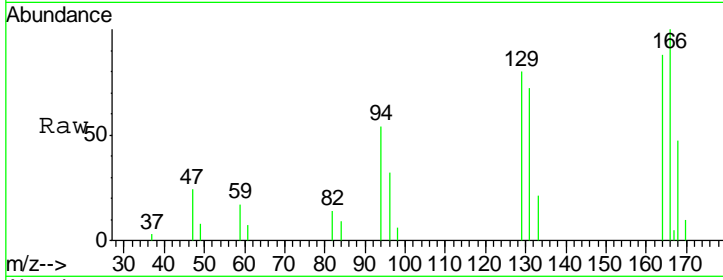
Quant Time: Dec 11 08:16:34 2020  
 Quant Method : Z:\VOASRV\HPCHEM1\MSVOA\_U\METHOD\SOMUTR120420WMA.M  
 Quant Title : TRACE VOA SOM01.0  
 QLast Update : Fri Dec 11 07:33:47 2020  
 Response via : Initial Calibration





#47  
 Tetrachloroethene  
 Concen: 1.689 ug/L  
 RT: 8.56 min Scan# 2244  
 Delta R.T. -0.00 min  
 Lab File: VU041565.D  
 Acq: 11 Dec 2020 03:25

Instrument : MSVOA\_U  
 ClientSampleId : GB1H6



Tot Ion: 164 Resp: 4434

Ion	Ratio	Lower	Upper
164	100		
129	91.1	67.1	124.7
131	81.9	63.3	117.7
166	113.6	88.8	164.8

