

Data Path : Z:\voasrv\HPCHEM1\MSVOA\_U\Data\VU121123\  
 Data File : VU056744.D  
 Acq On : 11 Dec 2023 20:07  
 Operator : MD/SY  
 Sample : 05677-03  
 Misc : 25.0mL/MSVOA\_U/WATER  
 ALS Vial : 26 Sample Multiplier: 1

Instrument :  
 MSVOA\_U  
 ClientSampleId :  
 H0AD7

Quant Time: Dec 12 01:12:49 2023  
 Quant Method : Z:\voasrv\HPCHEM1\MSVOA\_U\Method\SFAMUTR121123WMA.M  
 Quant Title : TRACE VOA SFAM1.0  
 QLast Update : Tue Dec 12 01:07:35 2023  
 Response via : Initial Calibration

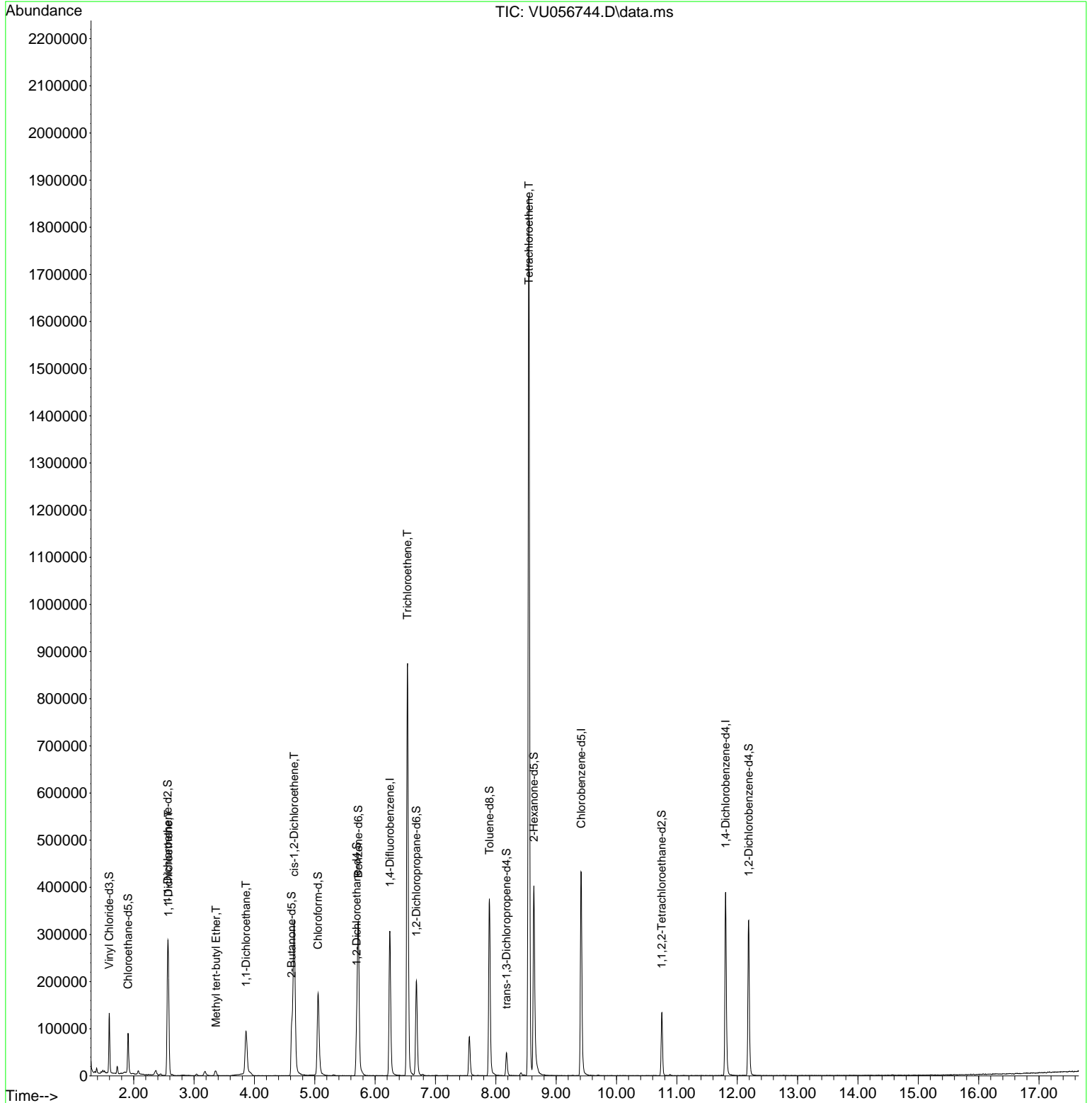
Compound	R.T.	QIon	Response	Conc	Units	Dev(Min)
-----						
Internal Standards						
1) 1,4-Difluorobenzene	6.245	114	249241	5.000	ug/L	0.00
28) Chlorobenzene-d5	9.415	117	256957	5.000	ug/L	0.00
58) 1,4-Dichlorobenzene-d4	11.807	152	103752	5.000	ug/L	0.00
System Monitoring Compounds						
4) Vinyl Chloride-d3	1.595	65	88368	4.136	ug/L	0.00
Spiked Amount	5.000	Range 40 - 130	Recovery =	82.800%		
7) Chloroethane-d5	1.907	69	62733	3.924	ug/L	0.00
Spiked Amount	5.000	Range 65 - 130	Recovery =	78.400%		
11) 1,1-Dichloroethene-d2	2.563	65	37517	4.104	ug/L	0.00
Spiked Amount	5.000	Range 60 - 125	Recovery =	82.000%		
20) 2-Butanone-d5	4.618	46	171835	40.728	ug/L	0.00
Spiked Amount	50.000	Range 40 - 130	Recovery =	81.460%		
24) Chloroform-d	5.055	84	162438	4.015	ug/L	0.00
Spiked Amount	5.000	Range 70 - 125	Recovery =	80.400%		
26) 1,2-Dichloroethane-d4	5.695	65	78715	4.112	ug/L	0.00
Spiked Amount	5.000	Range 70 - 130	Recovery =	82.200%		
32) Benzene-d6	5.721	84	319629	4.010	ug/L	0.00
Spiked Amount	5.000	Range 70 - 125	Recovery =	80.200%		
36) 1,2-Dichloropropane-d6	6.685	67	99613	3.993	ug/L	0.00
Spiked Amount	5.000	Range 60 - 140	Recovery =	79.800%		
41) Toluene-d8	7.894	98	264635	3.715	ug/L	0.00
Spiked Amount	5.000	Range 70 - 130	Recovery =	74.200%		
43) trans-1,3-Dichloroprop...	8.177	79	29545	3.054	ug/L	0.00
Spiked Amount	5.000	Range 55 - 130	Recovery =	61.000%		
46) 2-Hexanone-d5	8.631	63	133092	36.476	ug/L	0.00
Spiked Amount	50.000	Range 45 - 130	Recovery =	72.960%		
56) 1,1,2,2-Tetrachloroeth...	10.749	84	68368	3.788	ug/L	0.00
Spiked Amount	5.000	Range 65 - 120	Recovery =	75.800%		
66) 1,2-Dichlorobenzene-d4	12.190	152	85968	4.215	ug/L	0.00
Spiked Amount	5.000	Range 80 - 120	Recovery =	84.400%		
-----						
Target Compounds						Qvalue
12) 1,1-Dichloroethene	2.576	96	54105	2.674	ug/L	84
17) Methyl tert-butyl Ether	3.364	73	10049	0.224	ug/L	97
19) 1,1-Dichloroethane	3.862	63	106902	2.709	ug/L	98
22) cis-1,2-Dichloroethene	4.660	96	167513	7.505	ug/L	96
34) Trichloroethene	6.537	95	311415	12.571	ug/L	98
47) Tetrachloroethene	8.547	164	395174	22.794	ug/L	98
-----						

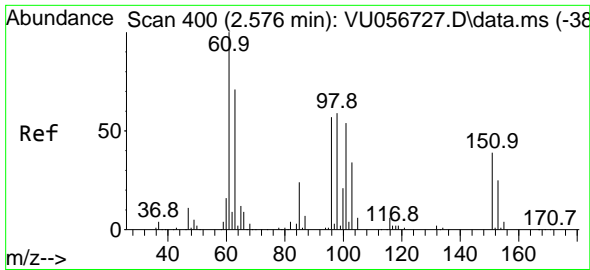
(#) = qualifier out of range (m) = manual integration (+) = signals summed

Data Path : Z:\voasrv\HPCHEM1\MSVOA\_U\Data\VU121123\  
 Data File : VU056744.D  
 Acq On : 11 Dec 2023 20:07  
 Operator : MD/SY  
 Sample : 05677-03  
 Misc : 25.0mL/MSVOA\_U/WATER  
 ALS Vial : 26 Sample Multiplier: 1

Instrument :  
 MSVOA\_U  
 ClientSampleId :  
 H0AD7

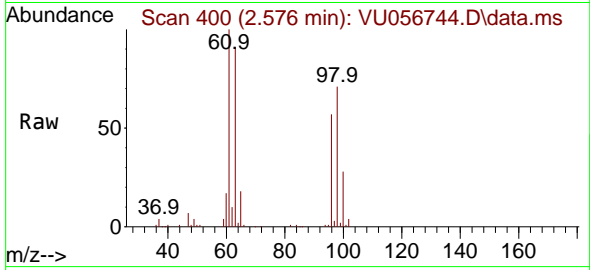
Quant Time: Dec 12 01:12:49 2023  
 Quant Method : Z:\voasrv\HPCHEM1\MSVOA\_U\Method\SFAMUTR121123WMA.M  
 Quant Title : TRACE VOA SFAM1.0  
 QLast Update : Tue Dec 12 01:07:35 2023  
 Response via : Initial Calibration



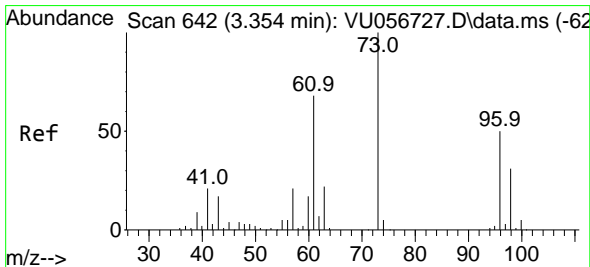
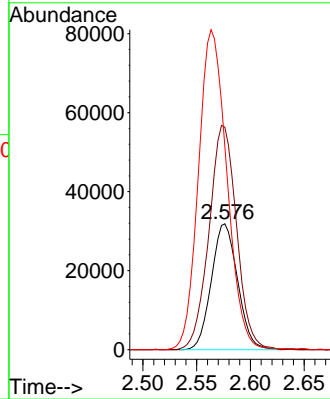
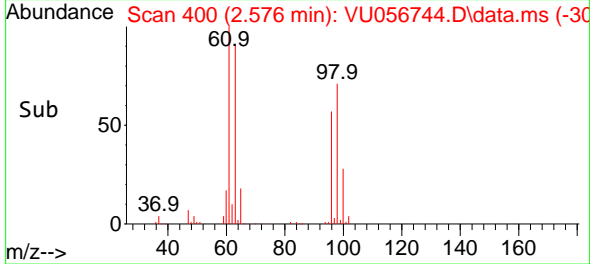


#12  
 1,1-Dichloroethene  
 Concen: 2.674 ug/L  
 RT: 2.576 min Scan# 400  
 Delta R.T. -0.000 min  
 Lab File: VU056744.D  
 Acq: 11 Dec 2023 20:07

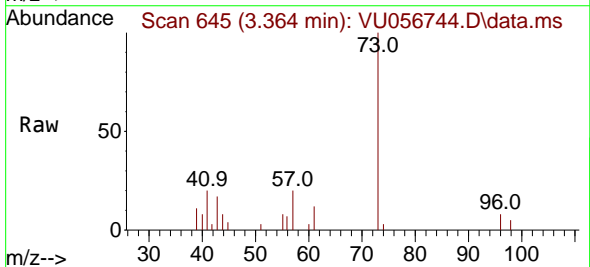
Instrument : MSVOA\_U  
 ClientSampleId : H0AD7



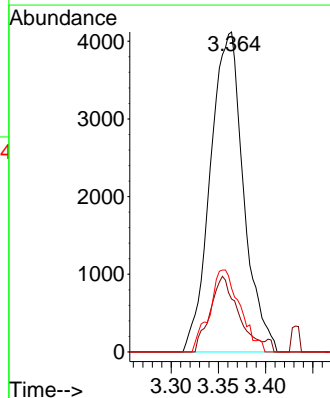
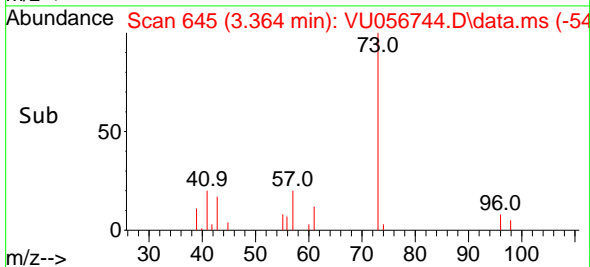
Tgt Ion: 96 Resp: 54105  
 Ion Ratio Lower Upper  
 96 100  
 61 176.7 119.0 221.0  
 63 161.5 88.7 164.7

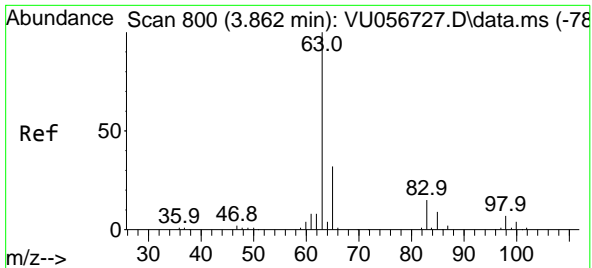


#17  
 Methyl tert-butyl Ether  
 Concen: 0.224 ug/L  
 RT: 3.364 min Scan# 645  
 Delta R.T. 0.010 min  
 Lab File: VU056744.D  
 Acq: 11 Dec 2023 20:07



Tgt Ion: 73 Resp: 10049  
 Ion Ratio Lower Upper  
 73 100  
 43 20.1 14.4 21.6  
 57 23.5 17.8 26.8



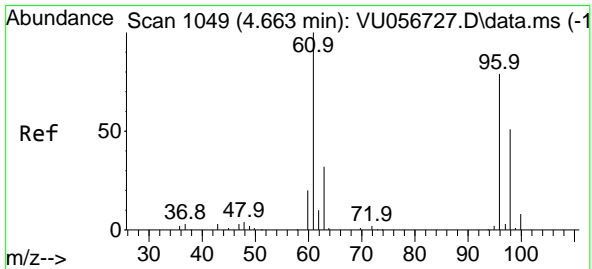
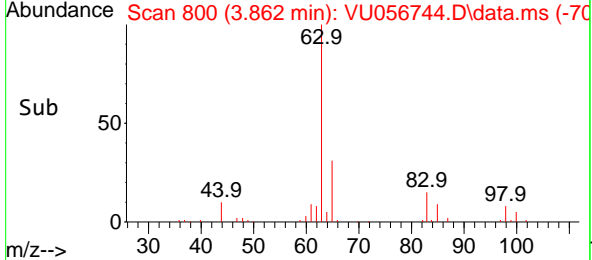
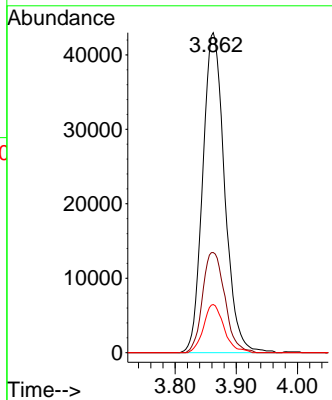
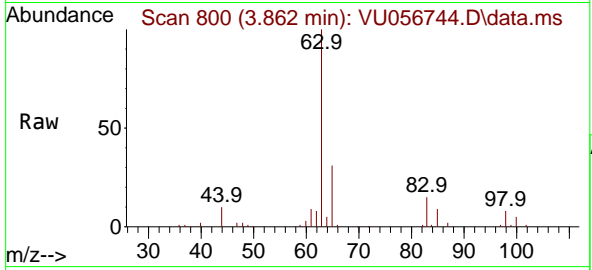


#19  
 1,1-Dichloroethane  
 Concen: 2.709 ug/L  
 RT: 3.862 min Scan# 800  
 Delta R.T. -0.000 min  
 Lab File: VU056744.D  
 Acq: 11 Dec 2023 20:07

Instrument : MSVOA\_U  
 ClientSampleId : H0AD7

Tgt Ion: 63 Resp: 106902

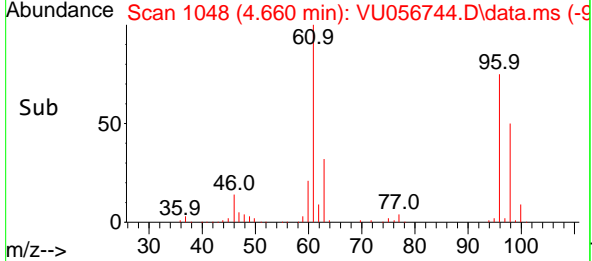
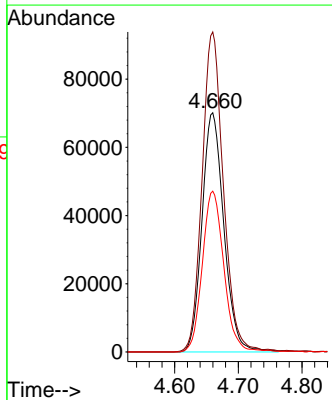
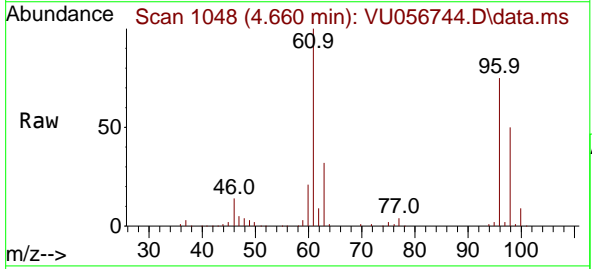
Ion	Ratio	Lower	Upper
63	100		
65	31.3	22.9	42.5
83	15.1	10.1	18.9

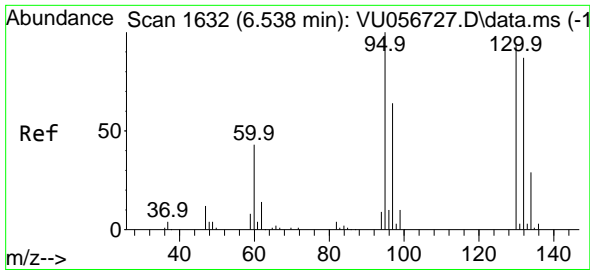


#22  
 cis-1,2-Dichloroethene  
 Concen: 7.505 ug/L  
 RT: 4.660 min Scan# 1048  
 Delta R.T. -0.003 min  
 Lab File: VU056744.D  
 Acq: 11 Dec 2023 20:07

Tgt Ion: 96 Resp: 167513

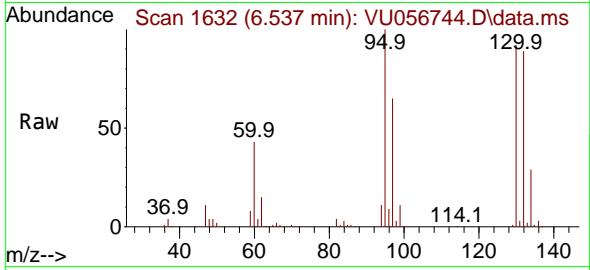
Ion	Ratio	Lower	Upper
96	100		
61	133.7	91.3	169.6
98	67.2	44.2	82.0





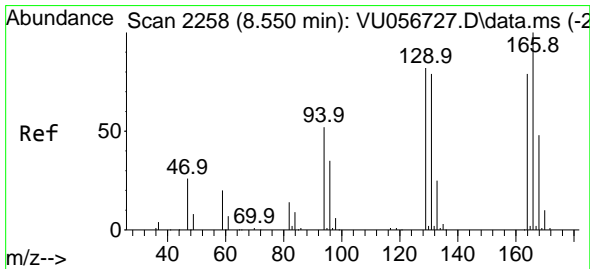
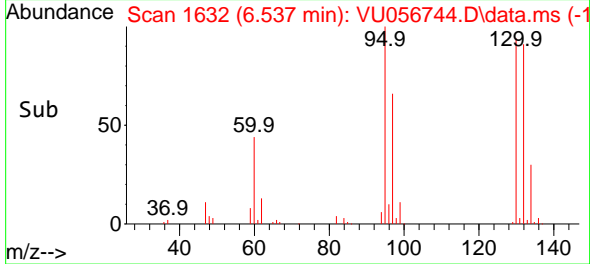
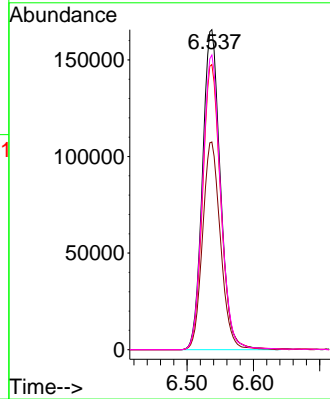
#34  
 Trichloroethene  
 Concen: 12.571 ug/L  
 RT: 6.537 min Scan# 1632  
 Delta R.T. -0.000 min  
 Lab File: VU056744.D  
 Acq: 11 Dec 2023 20:07

Instrument : MSVOA\_U  
 ClientSampleId : H0AD7

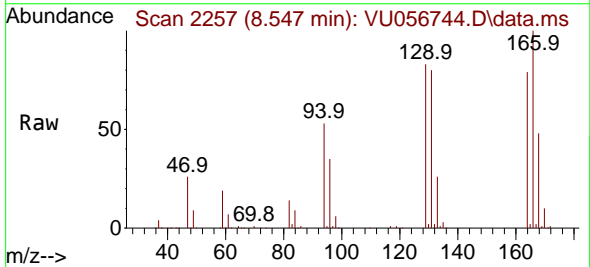


Tgt Ion: 95 Resp: 311415

Ion	Ratio	Lower	Upper
95	100		
97	64.9	46.1	85.5
132	89.1	63.6	118.0
130	92.1	66.4	123.4



#47  
 Tetrachloroethene  
 Concen: 22.794 ug/L  
 RT: 8.547 min Scan# 2257  
 Delta R.T. -0.003 min  
 Lab File: VU056744.D  
 Acq: 11 Dec 2023 20:07



Tgt Ion: 164 Resp: 395174

Ion	Ratio	Lower	Upper
164	100		
129	105.4	73.4	136.4
131	101.6	71.5	132.9
166	127.3	92.7	172.1

