

Data Path : Z:\voasrv\HPCHEM1\MSVOA_U\Data\VU121222\
 Data File : VU052358.D
 Acq On : 12 Dec 2022 17:21
 Operator : JC/MD
 Sample : N5961-01
 Misc : 25.0mL/MSVOA_U/WATER
 ALS Vial : 19 Sample Multiplier: 1

Instrument :
 MSVOA_U
 ClientSampleId :

Quant Time: Dec 13 01:05:37 2022
 Quant Method : Z:\voasrv\HPCHEM1\MSVOA_U\Method\SFAMUTR111822WMA.M
 Quant Title : TRACE VOA SFAM1.0
 QLast Update : Tue Dec 13 01:01:45 2022
 Response via : Initial Calibration

Compound	R.T.	QIon	Response	Conc	Units	Dev(Min)

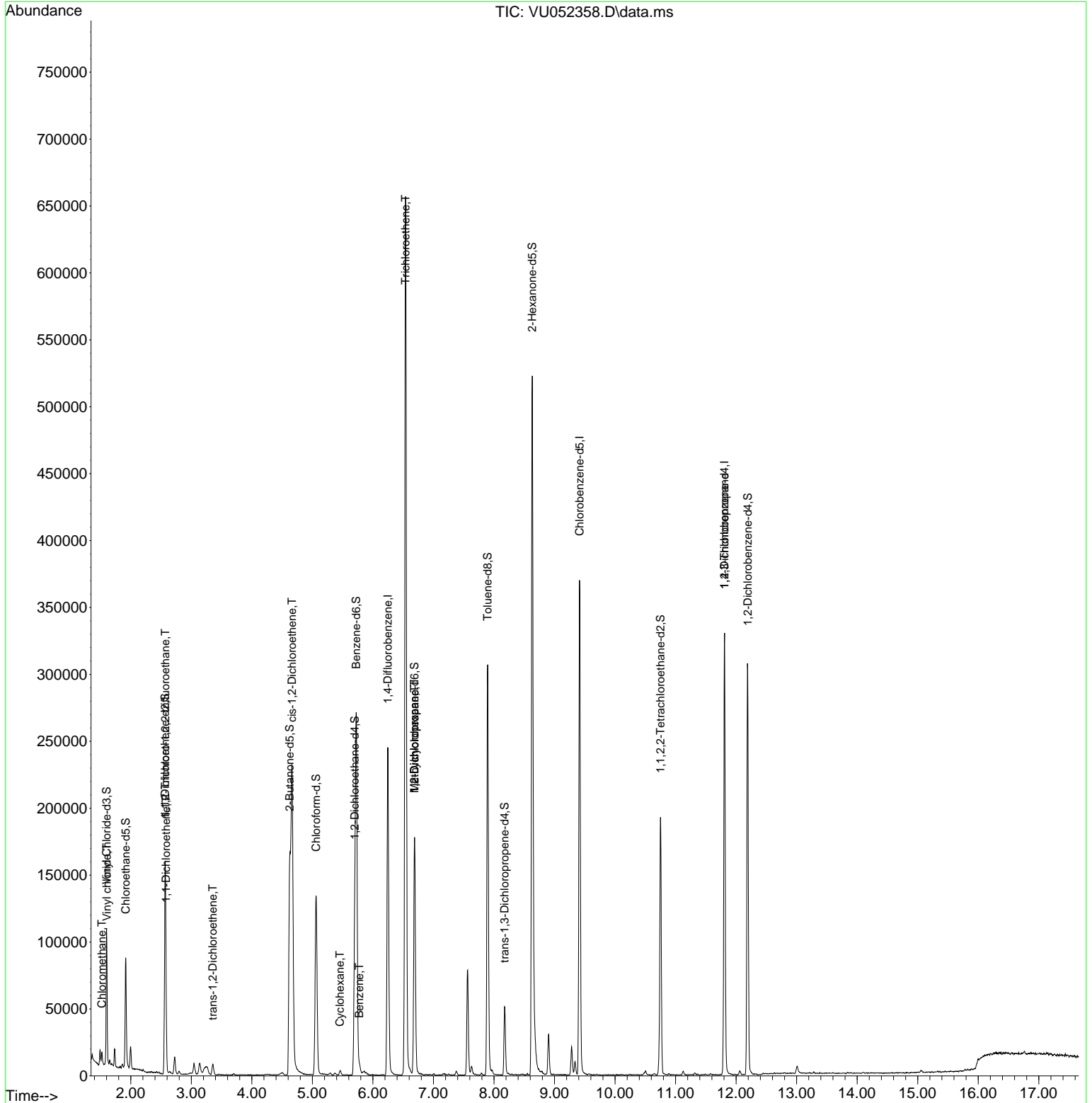
Internal Standards						
1) 1,4-Difluorobenzene	6.247	114	203880	5.000	ug/L	0.00
28) Chlorobenzene-d5	9.414	117	214268	5.000	ug/L	0.00
58) 1,4-Dichlorobenzene-d4	11.809	152	93995	5.000	ug/L	0.00
System Monitoring Compounds						
4) Vinyl Chloride-d3	1.600	65	66032	3.330	ug/L	0.00
Spiked Amount	5.000	Range 40 - 130	Recovery	=	66.600%	
7) Chloroethane-d5	1.916	69	62413	4.052	ug/L	0.00
Spiked Amount	5.000	Range 65 - 130	Recovery	=	81.000%	
11) 1,1-Dichloroethene-d2	2.568	65	28949	4.072	ug/L	0.00
Spiked Amount	5.000	Range 60 - 125	Recovery	=	81.400%	
20) 2-Butanone-d5	4.626	46	253092	70.407	ug/L	-0.02
Spiked Amount	50.000	Range 40 - 130	Recovery	=	140.820%#	
24) Chloroform-d	5.060	84	130821	4.490	ug/L	0.00
Spiked Amount	5.000	Range 70 - 125	Recovery	=	89.800%	
26) 1,2-Dichloroethane-d4	5.700	65	76234	5.180	ug/L	0.00
Spiked Amount	5.000	Range 70 - 130	Recovery	=	103.600%	
32) Benzene-d6	5.726	84	264203	4.153	ug/L	0.00
Spiked Amount	5.000	Range 70 - 125	Recovery	=	83.000%	
36) 1,2-Dichloropropane-d6	6.687	67	91671	4.657	ug/L	0.00
Spiked Amount	5.000	Range 60 - 140	Recovery	=	93.200%	
41) Toluene-d8	7.896	98	216227	3.757	ug/L	0.00
Spiked Amount	5.000	Range 70 - 130	Recovery	=	75.200%	
43) trans-1,3-Dichloroprop...	8.176	79	30297	4.223	ug/L	0.00
Spiked Amount	5.000	Range 55 - 130	Recovery	=	84.400%	
46) 2-Hexanone-d5	8.632	63	181382	59.661	ug/L	0.00
Spiked Amount	50.000	Range 45 - 130	Recovery	=	119.320%	
56) 1,1,2,2-Tetrachloroeth...	10.751	84	96656	5.663	ug/L	0.00
Spiked Amount	5.000	Range 65 - 120	Recovery	=	113.200%	
66) 1,2-Dichlorobenzene-d4	12.192	152	85173	4.733	ug/L	0.00
Spiked Amount	5.000	Range 80 - 120	Recovery	=	94.600%	
Target Compounds						
						Qvalue
3) Chloromethane	1.523	50	6067	0.263	ug/L	98
5) Vinyl chloride	1.607	62	1939	0.087	ug/L #	55
10) 1,1,2-Trichloro-1,2,2-...	2.571	101	874	0.059	ug/L #	20
12) 1,1-Dichloroethene	2.581	96	5423	0.367	ug/L #	1
18) trans-1,2-Dichloroethene	3.356	96	3397	0.214	ug/L	99
22) cis-1,2-Dichloroethene	4.665	96	109792	6.599	ug/L	99
30) Cyclohexane	5.456	56	3162	0.137	ug/L #	14
33) Benzene	5.774	78	5858	0.084	ug/L	100
34) Trichloroethene	6.539	95	234293	13.471	ug/L	98
35) Methylcyclohexane	6.687	83	20497	0.819	ug/L #	20
37) 1,2-Dichloropropane	6.687	63	9440	0.523	ug/L #	91
61) 1,2,3-Trichloropropane	11.809	75	10278	0.955	ug/L #	68

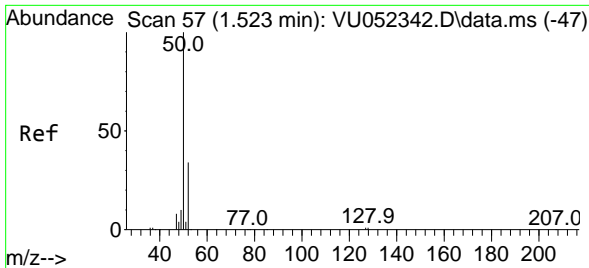
(#) = qualifier out of range (m) = manual integration (+) = signals summed

Data Path : Z:\voasrv\HPCHEM1\MSVOA_U\Data\VU121222\
 Data File : VU052358.D
 Acq On : 12 Dec 2022 17:21
 Operator : JC/MD
 Sample : N5961-01
 Misc : 25.0mL/MSVOA_U/WATER
 ALS Vial : 19 Sample Multiplier: 1

Instrument :
 MSVOA_U
 ClientSampleId :

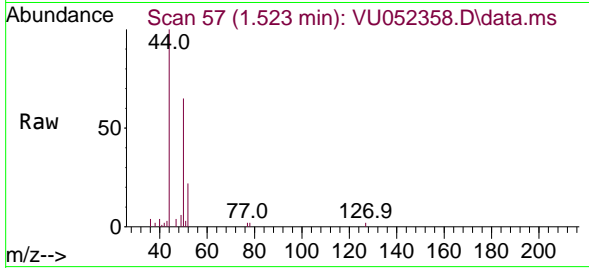
Quant Time: Dec 13 01:05:37 2022
 Quant Method : Z:\voasrv\HPCHEM1\MSVOA_U\Method\SFAMUTR111822WMA.M
 Quant Title : TRACE VOA SFAM1.0
 QLast Update : Tue Dec 13 01:01:45 2022
 Response via : Initial Calibration



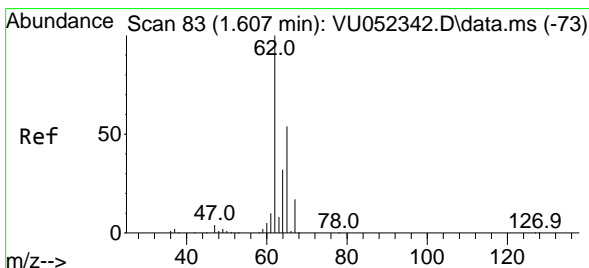
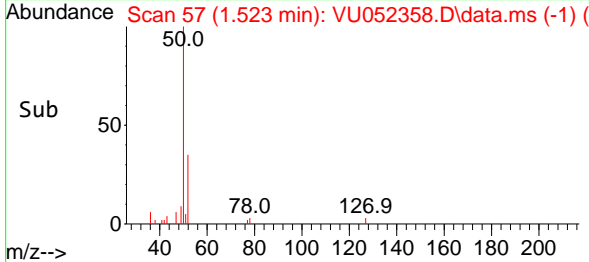
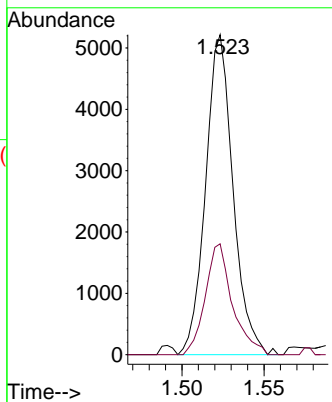


#3
 Chloromethane
 Concen: 0.263 ug/L
 RT: 1.523 min Scan# 51
 Delta R.T. -0.000 min
 Lab File: VU052358.D
 Acq: 12 Dec 2022 17:21

Instrument :
 MSVOA_U
 ClientSampleId :

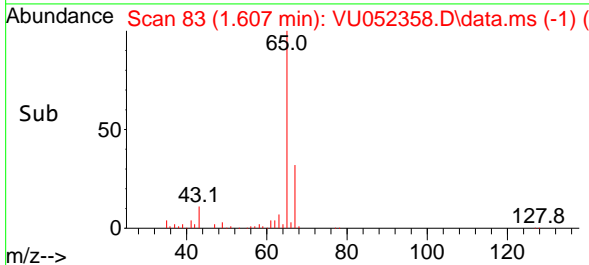
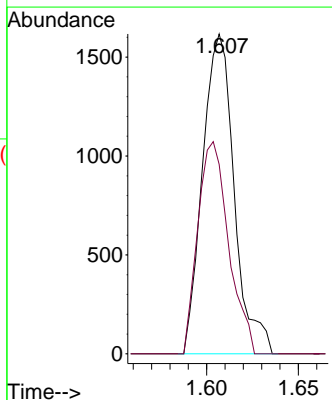
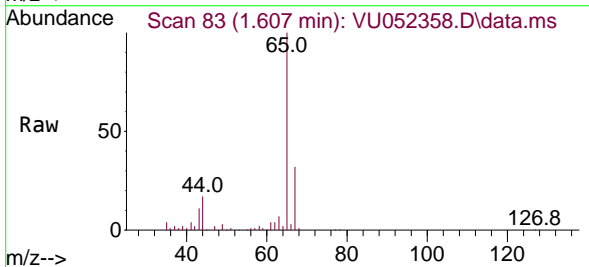


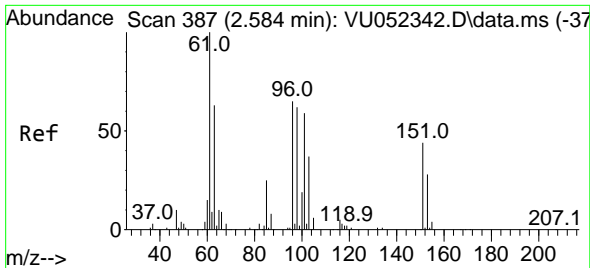
Tgt Ion: 50 Resp: 6067
 Ion Ratio Lower Upper
 50 100
 52 34.7 23.4 43.4



#5
 Vinyl chloride
 Concen: 0.087 ug/L
 RT: 1.607 min Scan# 83
 Delta R.T. -0.000 min
 Lab File: VU052358.D
 Acq: 12 Dec 2022 17:21

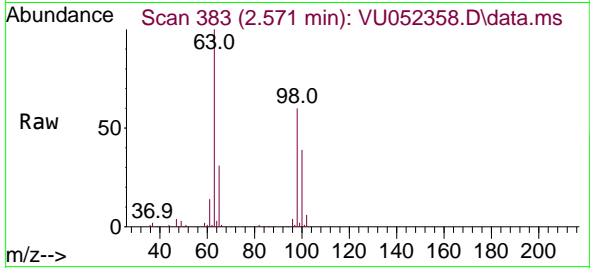
Tgt Ion: 62 Resp: 1939
 Ion Ratio Lower Upper
 62 100
 64 59.2 23.5 43.7#



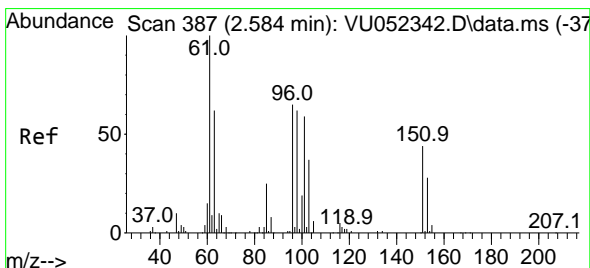
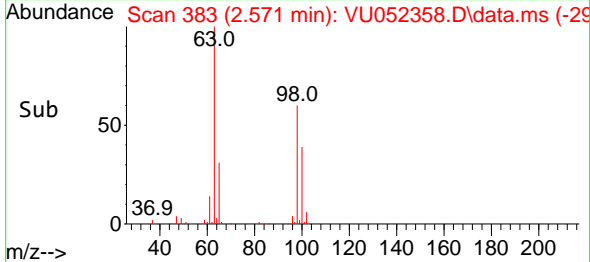
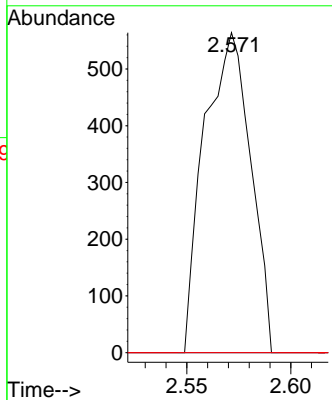


#10
 1,1,2-Trichloro-1,2,2-trifluoroethane
 Concen: 0.059 ug/L
 RT: 2.571 min Scan# 383
 Delta R.T. -0.013 min
 Lab File: VU052358.D
 Acq: 12 Dec 2022 17:21

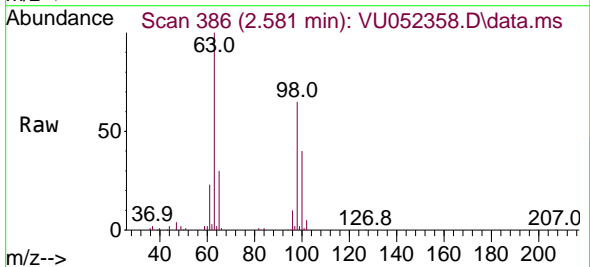
Instrument : MSVOA_U
 ClientSampleId :



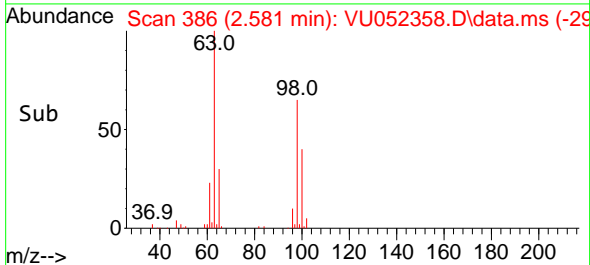
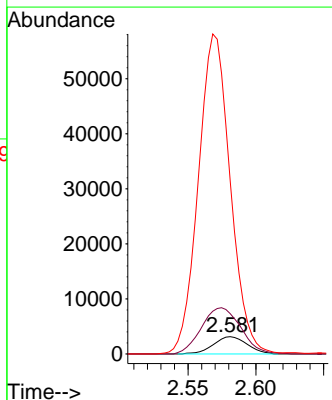
Tgt Ion	Resp	Lower	Upper
101	100		
85	0.0	33.8	50.6#
151	0.0	58.6	88.0#

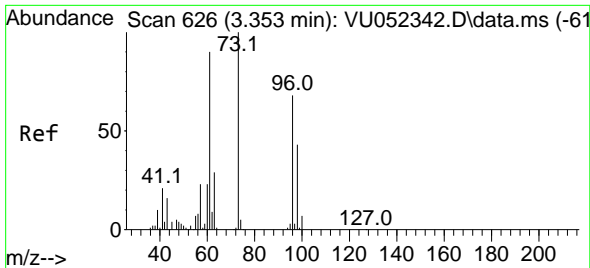


#12
 1,1-Dichloroethene
 Concen: 0.367 ug/L
 RT: 2.581 min Scan# 386
 Delta R.T. -0.003 min
 Lab File: VU052358.D
 Acq: 12 Dec 2022 17:21



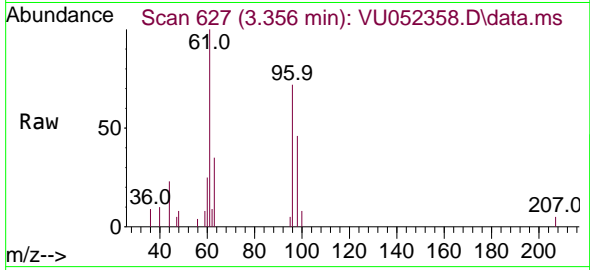
Tgt Ion	Resp	Lower	Upper
96	100		
61	233.3	114.8	213.2#
63	1002.2	93.7	174.1#





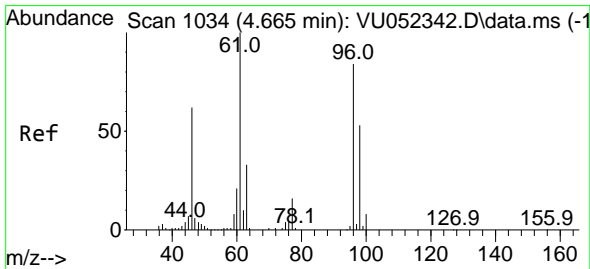
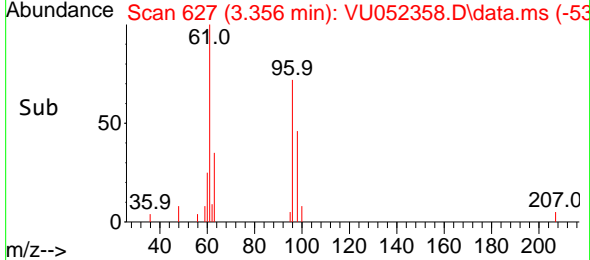
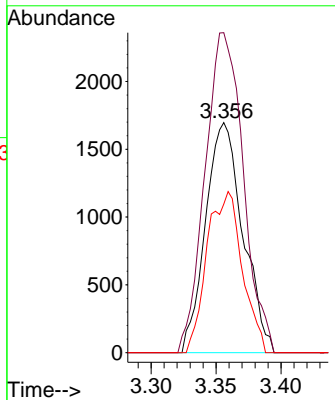
#18
 trans-1,2-Dichloroethene
 Concen: 0.214 ug/L
 RT: 3.356 min Scan# 61
 Delta R.T. 0.003 min
 Lab File: VU052358.D
 Acq: 12 Dec 2022 17:21

Instrument :
 MSVOA_U
 ClientSampleId :



Tgt Ion: 96 Resp: 3397

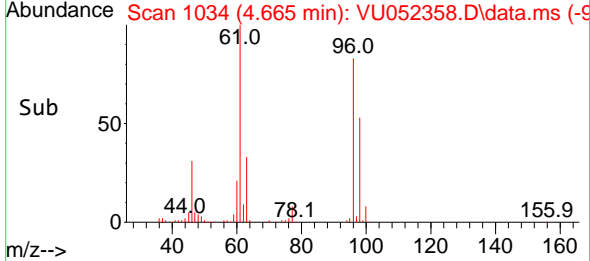
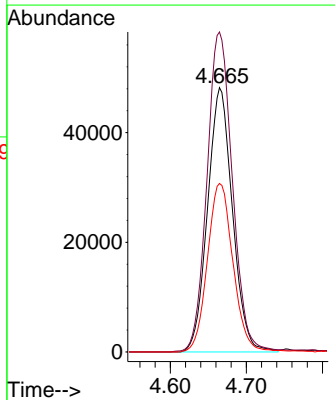
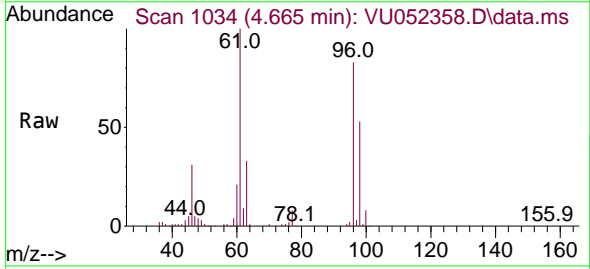
Ion	Ratio	Lower	Upper
96	100		
61	139.1	97.9	181.7
98	64.6	43.8	81.3

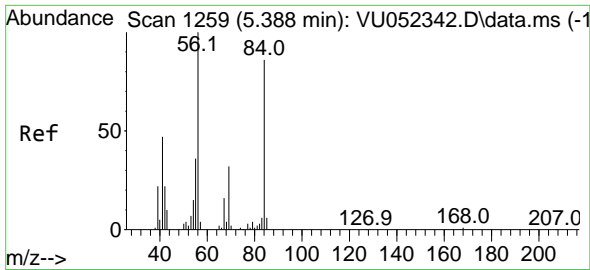


#22
 cis-1,2-Dichloroethene
 Concen: 6.599 ug/L
 RT: 4.665 min Scan# 1034
 Delta R.T. -0.000 min
 Lab File: VU052358.D
 Acq: 12 Dec 2022 17:21

Tgt Ion: 96 Resp: 109792

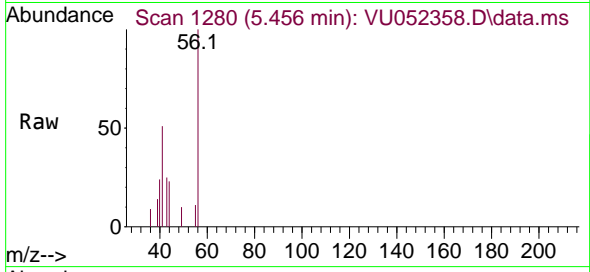
Ion	Ratio	Lower	Upper
96	100		
61	121.1	85.1	158.1
98	63.7	42.8	79.6



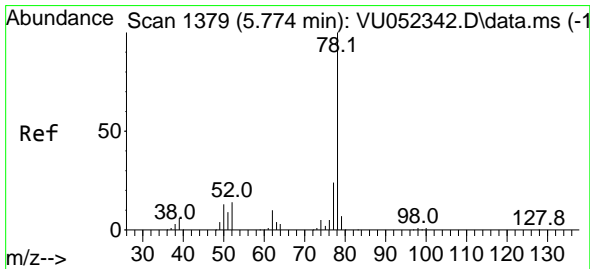
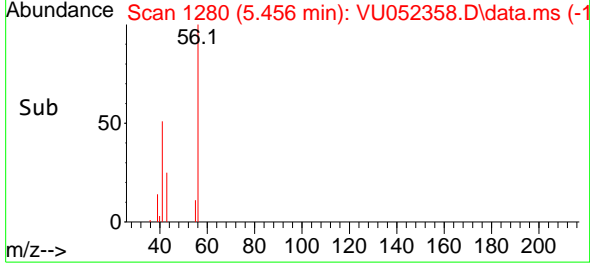
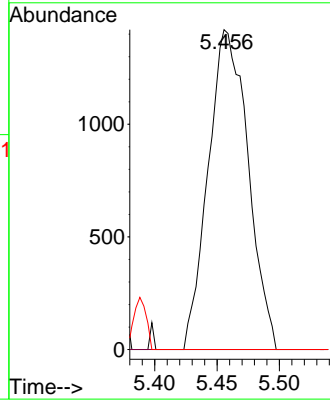


#30
 Cyclohexane
 Concen: 0.137 ug/L
 RT: 5.456 min Scan# 11
 Delta R.T. 0.067 min
 Lab File: VU052358.D
 Acq: 12 Dec 2022 17:21

Instrument :
 MSVOA_U
 ClientSampleId :

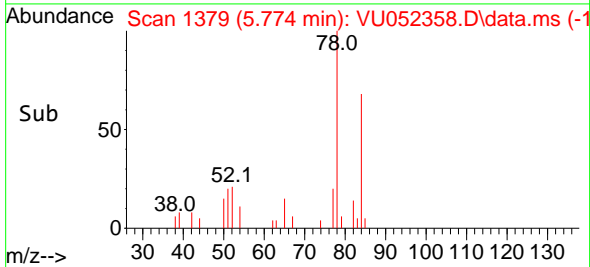
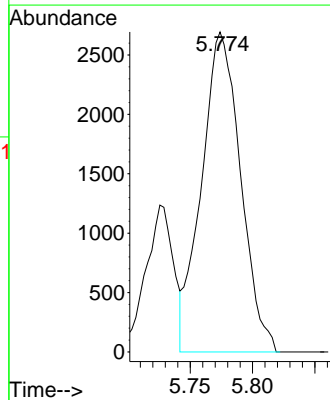
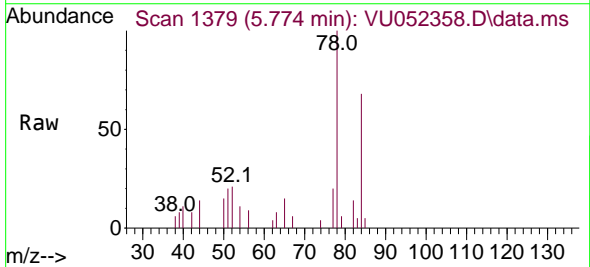


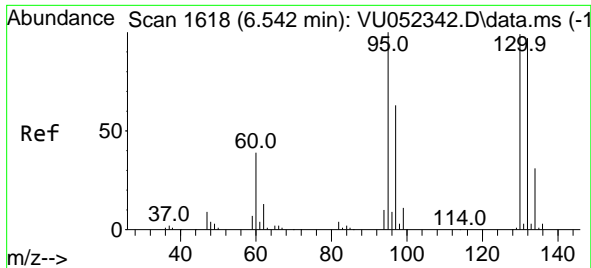
Tgt Ion: 56 Resp: 3162
 Ion Ratio Lower Upper
 56 100
 69 0.0 25.6 38.4#
 84 0.0 72.0 108.0#



#33
 Benzene
 Concen: 0.084 ug/L
 RT: 5.774 min Scan# 1379
 Delta R.T. -0.000 min
 Lab File: VU052358.D
 Acq: 12 Dec 2022 17:21

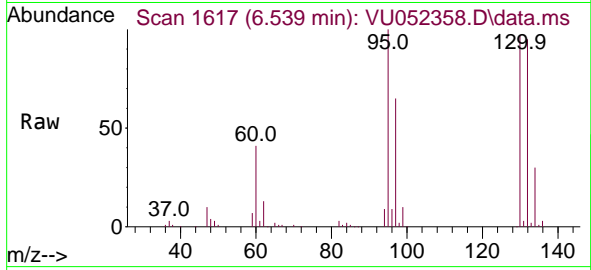
Tgt Ion: 78 Resp: 5858





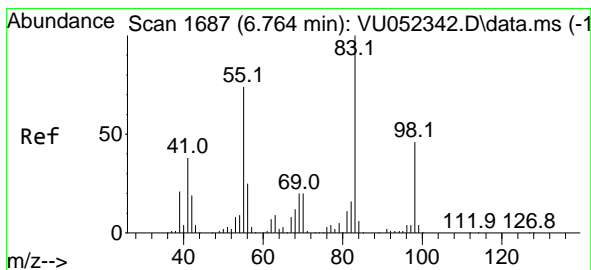
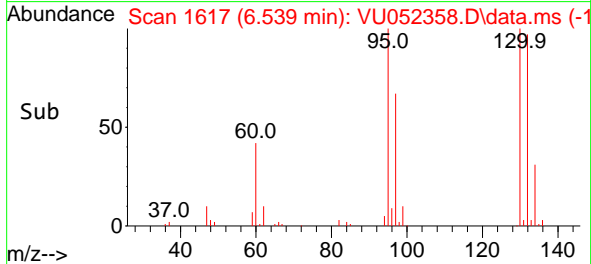
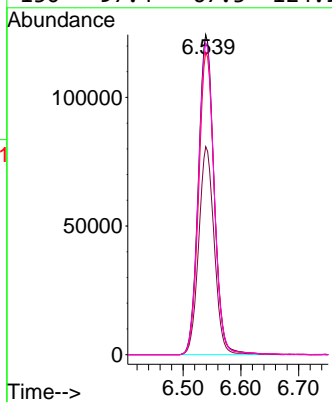
#34
 Trichloroethene
 Concen: 13.471 ug/L
 RT: 6.539 min Scan# 1617
 Delta R.T. -0.003 min
 Lab File: VU052358.D
 Acq: 12 Dec 2022 17:21

Instrument : MSVOA_U
 ClientSampleId :



Tgt Ion: 95 Resp: 234293

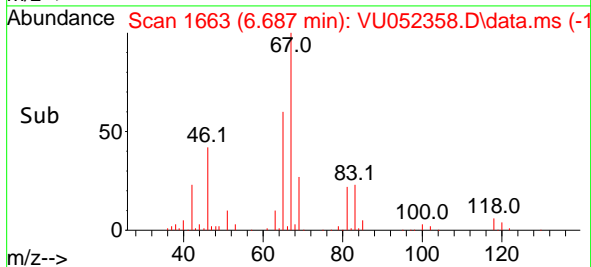
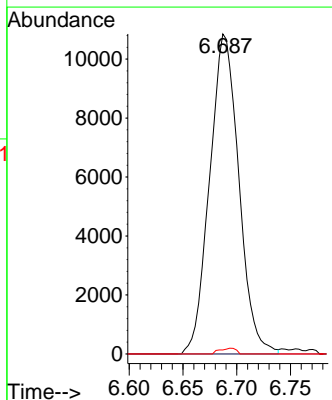
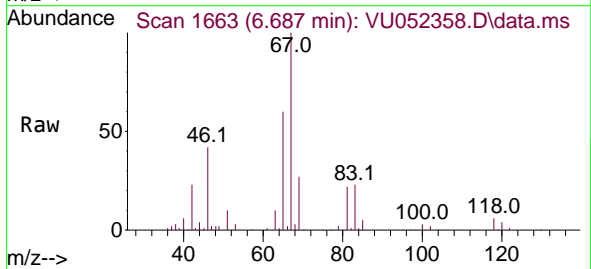
Ion	Ratio	Lower	Upper
95	100		
97	65.0	43.7	81.1
132	94.6	64.3	119.3
130	97.4	67.3	124.9

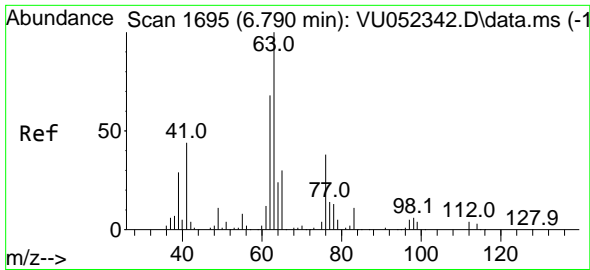


#35
 Methylcyclohexane
 Concen: 0.819 ug/L
 RT: 6.687 min Scan# 1663
 Delta R.T. -0.077 min
 Lab File: VU052358.D
 Acq: 12 Dec 2022 17:21

Tgt Ion: 83 Resp: 20497

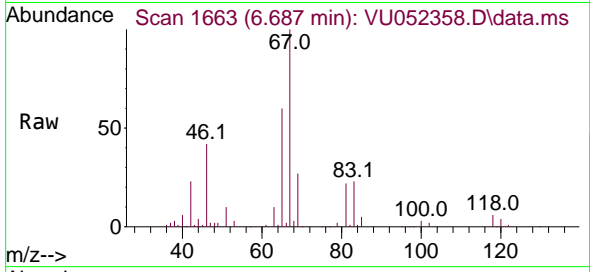
Ion	Ratio	Lower	Upper
83	100		
55	0.2	60.8	91.2#
98	1.0	35.1	52.7#



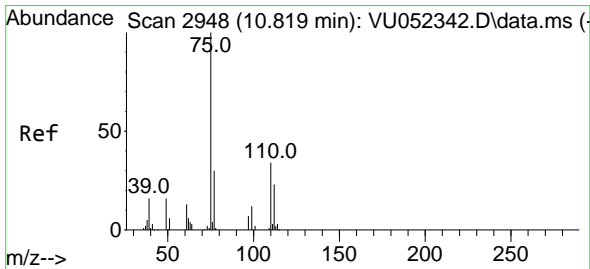
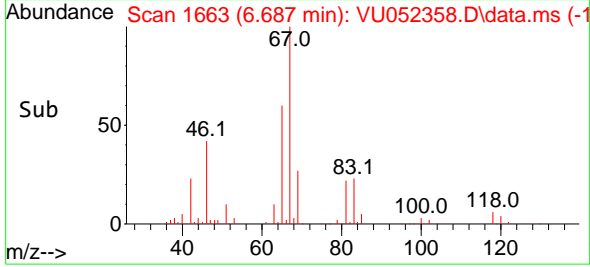
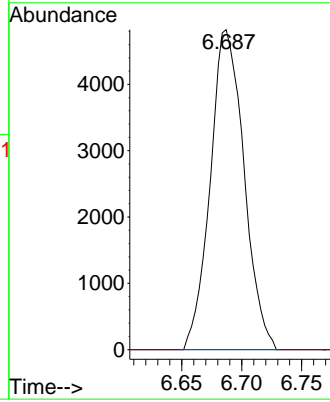


#37
 1,2-Dichloropropane
 Concen: 0.523 ug/L
 RT: 6.687 min Scan# 1
 Delta R.T. -0.103 min
 Lab File: VU052358.D
 Acq: 12 Dec 2022 17:21

Instrument :
 MSVOA_U
 ClientSampleId :



Tgt Ion: 63 Resp: 9440
 Ion Ratio Lower Upper
 63 100
 112 1.0 3.3 4.9#



#61
 1,2,3-Trichloropropane
 Concen: 0.955 ug/L
 RT: 11.809 min Scan# 3256
 Delta R.T. 0.990 min
 Lab File: VU052358.D
 Acq: 12 Dec 2022 17:21

Tgt Ion: 75 Resp: 10278
 Ion Ratio Lower Upper
 75 100
 110 1.4 28.3 42.5#
 77 30.1 26.2 39.2

