

Data Path : Z:\VOASRV\HPCHEM1\MSVOA U\DATA\VU121318\
 Data File : VU028638.D
 Acq On : 12 Dec 2018 09:32
 Operator : MD/SY
 Sample : VU1213WBL02
 Misc : 5.0mL/MSVOA U/WATER
 ALS Vial : 32 Sample Multiplier: 1

Instrument :
 MSVOA_U
 ClientSampleId :
 VU1213WBL02

Integration Parameters: RTEINT.P
 Integrator: RTE
 Smoothing : ON Filtering: 5
 Sampling : 1 Min Area: 3 % of largest Peak
 Start Thrs: 0.2 Max Peaks: 100
 Stop Thrs : 0 Peak Location: TOP

If leading or trailing edge < 100 prefer < Baseline drop else tangent >
 Peak separation: 5

Method : Z:\VOASRV\HPCHEM1\MSVOA_U\METHOD\82U120618W.M
 Title : SW846 8260

Signal : TIC

peak #	R.T. min	first scan	max scan	last scan	PK TY	peak height	corr. area	corr. % max.	% of total
1	4.881	1138	1153	1169	rBV2	97673	221637	31.80%	6.540%
2	4.980	1170	1184	1211	rVB2	150976	337717	48.46%	9.965%
3	5.308	1272	1286	1311	rBV	114996	243570	34.95%	7.187%
4	5.884	1444	1465	1490	rBV	251694	513761	73.72%	15.160%
5	7.562	1973	1987	2017	rBV	388494	696892	100.00%	20.564%
6	9.090	2449	2462	2482	rBV	333432	555504	79.71%	16.392%
7	10.308	2828	2841	2866	rBV	241749	390983	56.10%	11.537%
8	11.482	3194	3206	3227	rBV	271539	428894	61.54%	12.656%

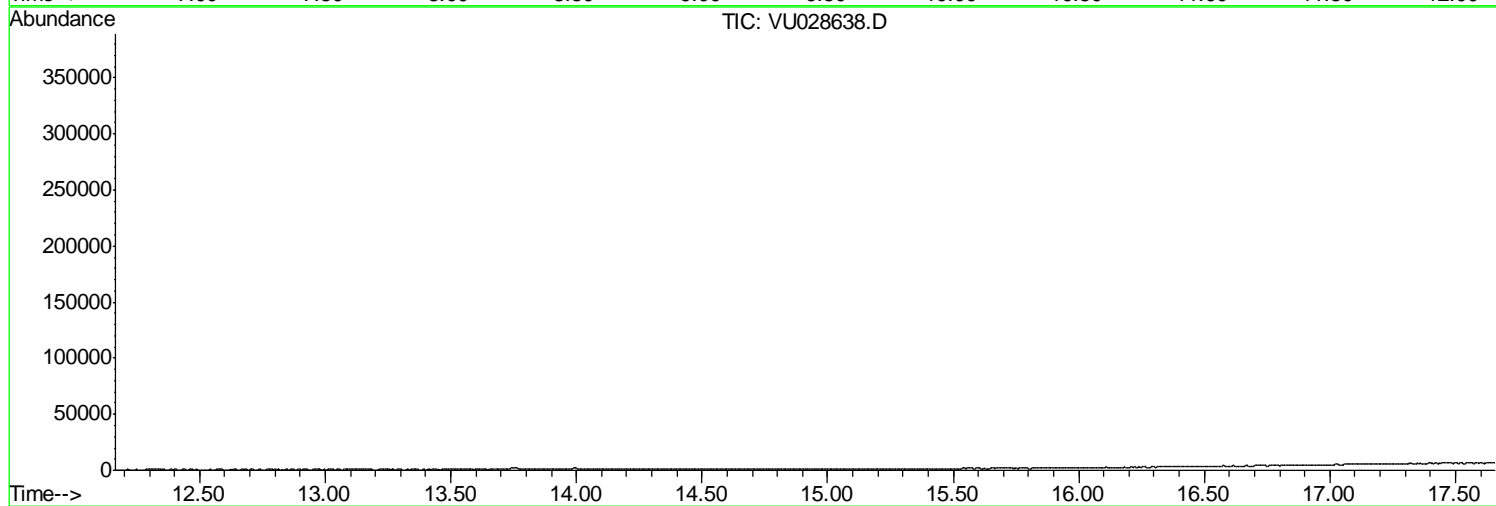
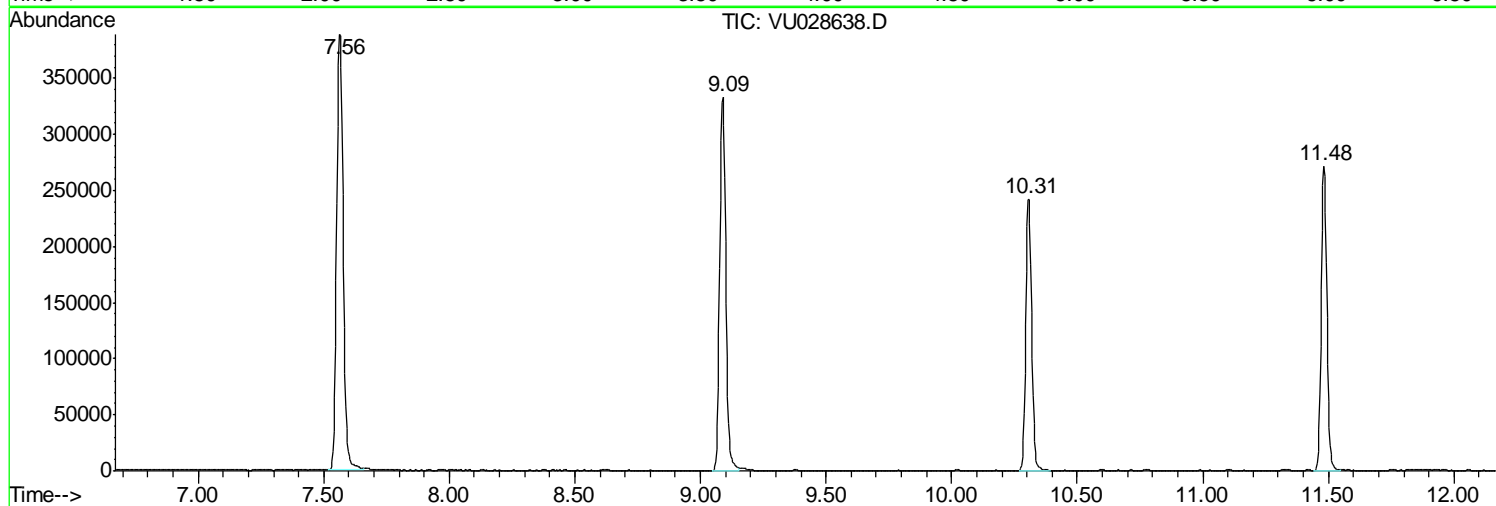
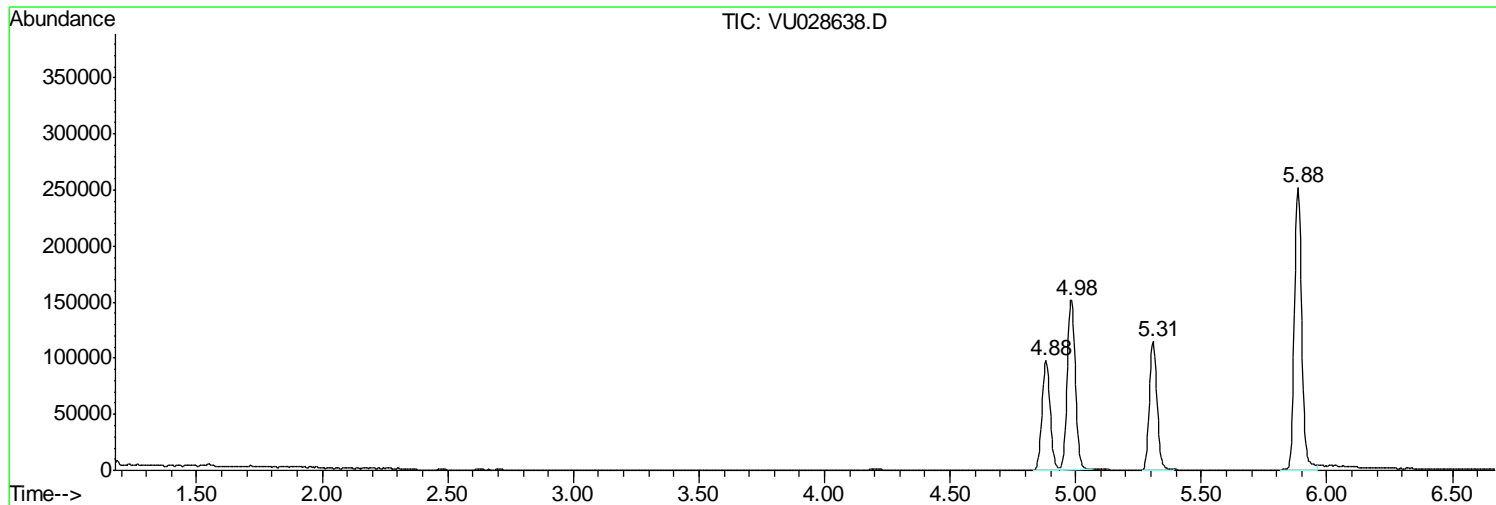
Sum of corrected areas: 3388958

Data Path : Z:\VOASRV\HPCHEM1\MSVOA U\DATA\VU121318\
Data File : VU028638.D
Acq On : 12 Dec 2018 09:32
Operator : MD/SY
Sample : VU1213WBL02
Misc : 5.0mL/MSVOA U/WATER
ALS Vial : 32 Sample Multiplier: 1

Instrument :
MSVOA_U
ClientSampled :
VU1213WBL02

Quant Method : Z:\VOASRV\HPCHEM1\MSVOA_U\METHOD\82U120618W.M
Quant Title : SW846 8260

TIC Library : C:\DATABASE\NIST11.L
TIC Integration Parameters: LSCINT.P



Data Path : Z:\VOASRV\HPCHEM1\MSVOA_U\DATA\VU121318\
Data File : VU028638.D
Acq On : 12 Dec 2018 09:32
Operator : MD/SY
Sample : VU1213WBL02
Misc : 5.0mL/MSVOA_U/WATER
ALS Vial : 32 Sample Multiplier: 1

Instrument :
MSVOA_U
ClientSampleId :
VU1213WBL02

Quant Method : Z:\VOASRV\HPCHEM1\MSVOA_U\METHOD\82U120618W.M
Quant Title : SW846 8260

TIC Library : C:\DATABASE\NIST11.L
TIC Integration Parameters: LSCINT.P

No Library Search Compounds Detected

Data Path : Z:\VOASRV\HPCHEM1\MSVOA_U\DATA\VU121318\
Data File : VU028638.D
Acq On : 12 Dec 2018 09:32
Operator : MD/SY
Sample : VU1213WBL02
Misc : 5.0mL/MSVOA_U/WATER
ALS Vial : 32 Sample Multiplier: 1

Instrument :
MSVOA_U
ClientSampleId :
VU1213WBL02

Quant Method : Z:\VOASRV\HPCHEM1\MSVOA_U\METHOD\82U120618W.M
Quant Title : SW846 8260

TIC Library : C:\DATABASE\NIST11.L
TIC Integration Parameters: LSCINT.P

TIC Top Hit name	RT	EstConc	Units	Response	--Internal Standard--			
					#	RT	Resp	Conc
