

Data Path : Z:\VOASRV\HPCHEM1\MSVOA U\DATA\VU121318\
 Data File : VU028642.D
 Acq On : 12 Dec 2018 11:08
 Operator : MD/SY
 Sample : J6357-12
 Misc : 5.0mL/MSVOA U/WATER
 ALS Vial : 36 Sample Multiplier: 1

Instrument :
 MSVOA_U
 ClientSampleId :
 TB.2018.12.11

Integration Parameters: RTEINT.P

Integrator: RTE
 Smoothing : ON Filtering: 5
 Sampling : 1 Min Area: 3 % of largest Peak
 Start Thrs: 0.2 Max Peaks: 100
 Stop Thrs : 0 Peak Location: TOP

If leading or trailing edge < 100 prefer < Baseline drop else tangent >
 Peak separation: 5

Method : Z:\VOASRV\HPCHEM1\MSVOA_U\METHOD\82U120618W.M
 Title : SW846 8260

Signal : TIC

peak #	R.T. min	first scan	max scan	last scan	PK TY	peak height	corr. area	corr. % max.	% of total
1	1.286	28	35	44	rBV	142087	135659	19.95%	3.833%
2	1.576	111	125	132	rVB7	8133	17013	2.50%	0.481%
3	4.881	1137	1153	1170	rBV2	96152	215225	31.65%	6.082%
4	4.984	1170	1185	1207	rVB	147789	323988	47.65%	9.155%
5	5.309	1271	1286	1311	rBV2	113378	239810	35.27%	6.776%
6	5.884	1447	1465	1492	rBV	247498	495576	72.88%	14.004%
7	7.566	1973	1988	2012	rBV	384834	679961	100.00%	19.214%
8	9.090	2449	2462	2486	rBV	338121	563472	82.87%	15.922%
9	10.305	2828	2840	2864	rBV	255095	406214	59.74%	11.478%
10	11.482	3195	3206	3227	rBV	293913	462015	67.95%	13.055%

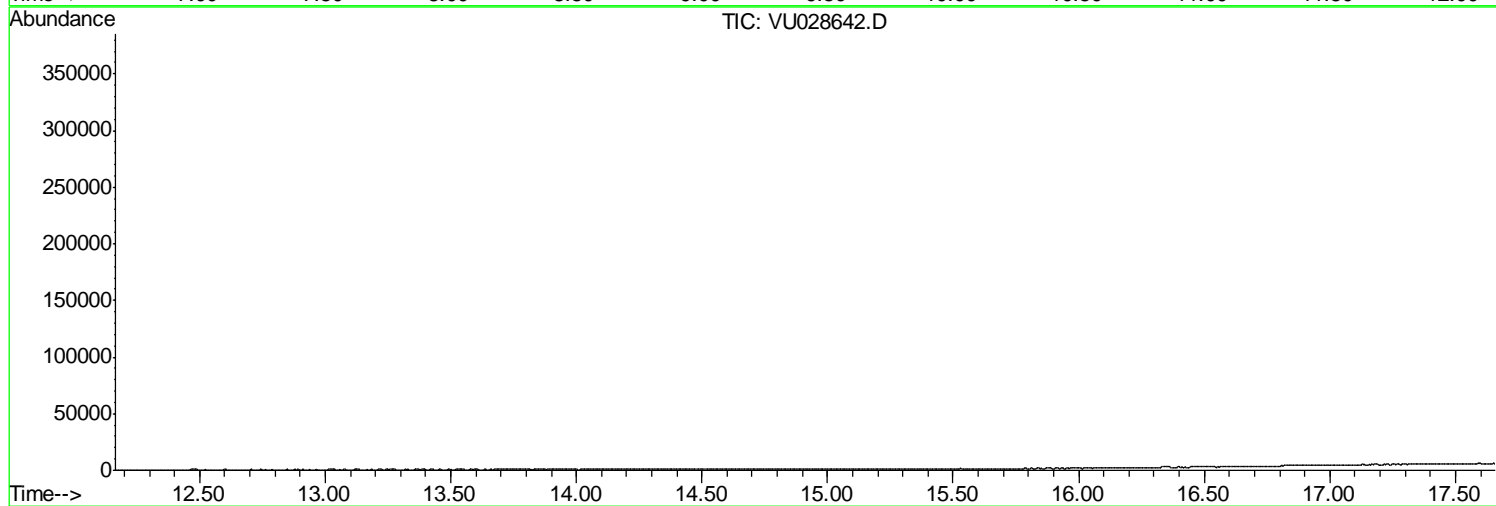
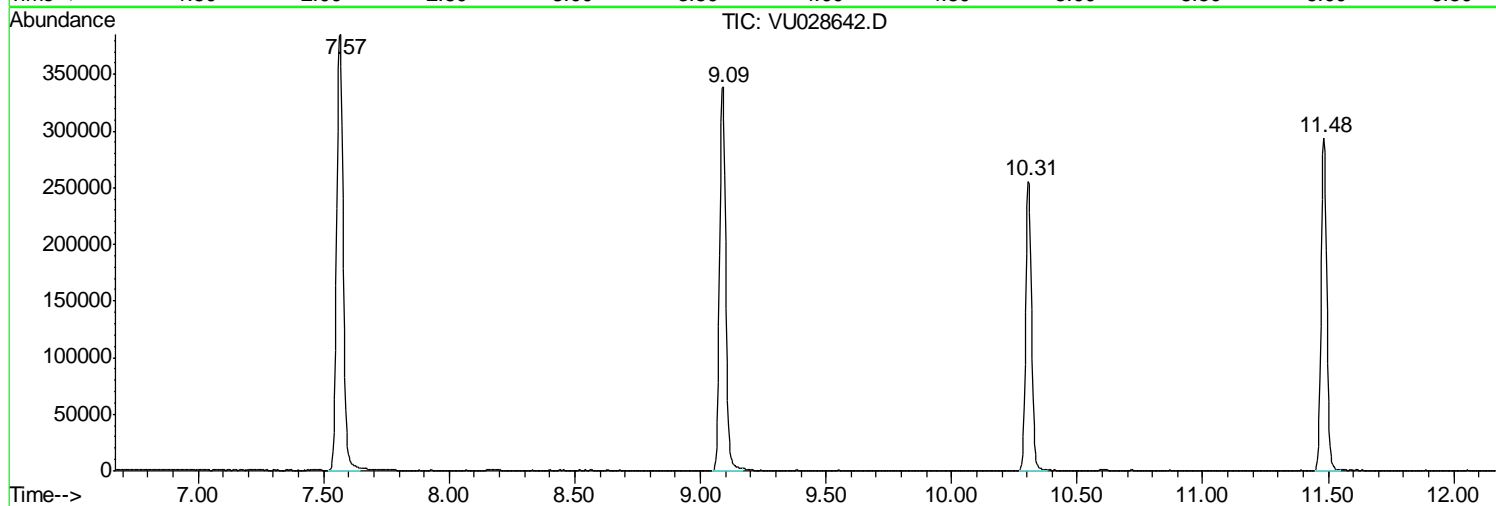
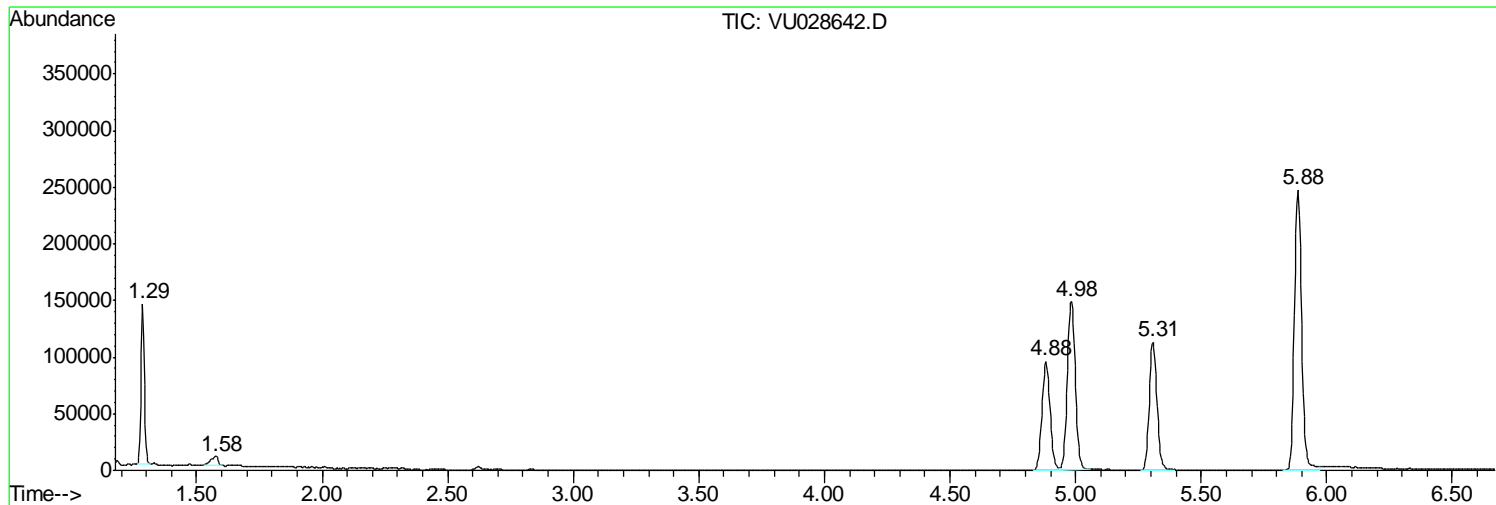
Sum of corrected areas: 3538933

Data Path : Z:\VOASRV\HPCHEM1\MSVOA U\DATA\VU121318\
Data File : VU028642.D
Acq On : 12 Dec 2018 11:08
Operator : MD/SY
Sample : J6357-12
Misc : 5.0mL/MSVOA U/WATER
ALS Vial : 36 Sample Multiplier: 1

Instrument :
MSVOA_U
ClientSampled :
TB.2018.12.11

Quant Method : Z:\VOASRV\HPCHEM1\MSVOA_U\METHOD\82U120618W.M
Quant Title : SW846 8260

TIC Library : C:\DATABASE\NIST11.L
TIC Integration Parameters: LSCINT.P



Data Path : Z:\VOASRV\HPCHEM1\MSVOA_U\DATA\VU121318\
Data File : VU028642.D
Acq On : 12 Dec 2018 11:08
Operator : MD/SY
Sample : J6357-12
Misc : 5.0mL/MSVOA_U/WATER
ALS Vial : 36 Sample Multiplier: 1

Instrument :
MSVOA_U
ClientSampleId :
TB.2018.12.11

Quant Method : Z:\VOASRV\HPCHEM1\MSVOA_U\METHOD\82U120618W.M
Quant Title : SW846 8260

TIC Library : C:\DATABASE\NIST11.L
TIC Integration Parameters: LSCINT.P

No Library Search Compounds Detected

Data Path : Z:\VOASRV\HPCHEM1\MSVOA_U\DATA\VU121318\
Data File : VU028642.D
Acq On : 12 Dec 2018 11:08
Operator : MD/SY
Sample : J6357-12
Misc : 5.0mL/MSVOA_U/WATER
ALS Vial : 36 Sample Multiplier: 1

Instrument :
MSVOA_U
ClientSampleId :
TB.2018.12.11

Quant Method : Z:\VOASRV\HPCHEM1\MSVOA_U\METHOD\82U120618W.M
Quant Title : SW846 8260

TIC Library : C:\DATABASE\NIST11.L
TIC Integration Parameters: LSCINT.P

TIC Top Hit name	RT	EstConc	Units	Response	--Internal Standard--			
					#	RT	Resp	Conc
