

Data Path : Z:\voasrv\HPCHEM1\MSVOA_U\Data\VU121322\
 Data File : VU052386.D
 Acq On : 13 Dec 2022 18:42
 Operator : JC/MD
 Sample : N6034-03
 Misc : 25.0mL/MSVOA_U/WATER
 ALS Vial : 22 Sample Multiplier: 1

Instrument :
 MSVOA_U
 ClientSampleId :
 COL32

Quant Time: Dec 14 03:22:04 2022
 Quant Method : Z:\voasrv\HPCHEM1\MSVOA_U\Method\SFAMUTR111822WMA.M
 Quant Title : TRACE VOA SFAM1.0
 QLast Update : Wed Dec 14 03:17:56 2022
 Response via : Initial Calibration

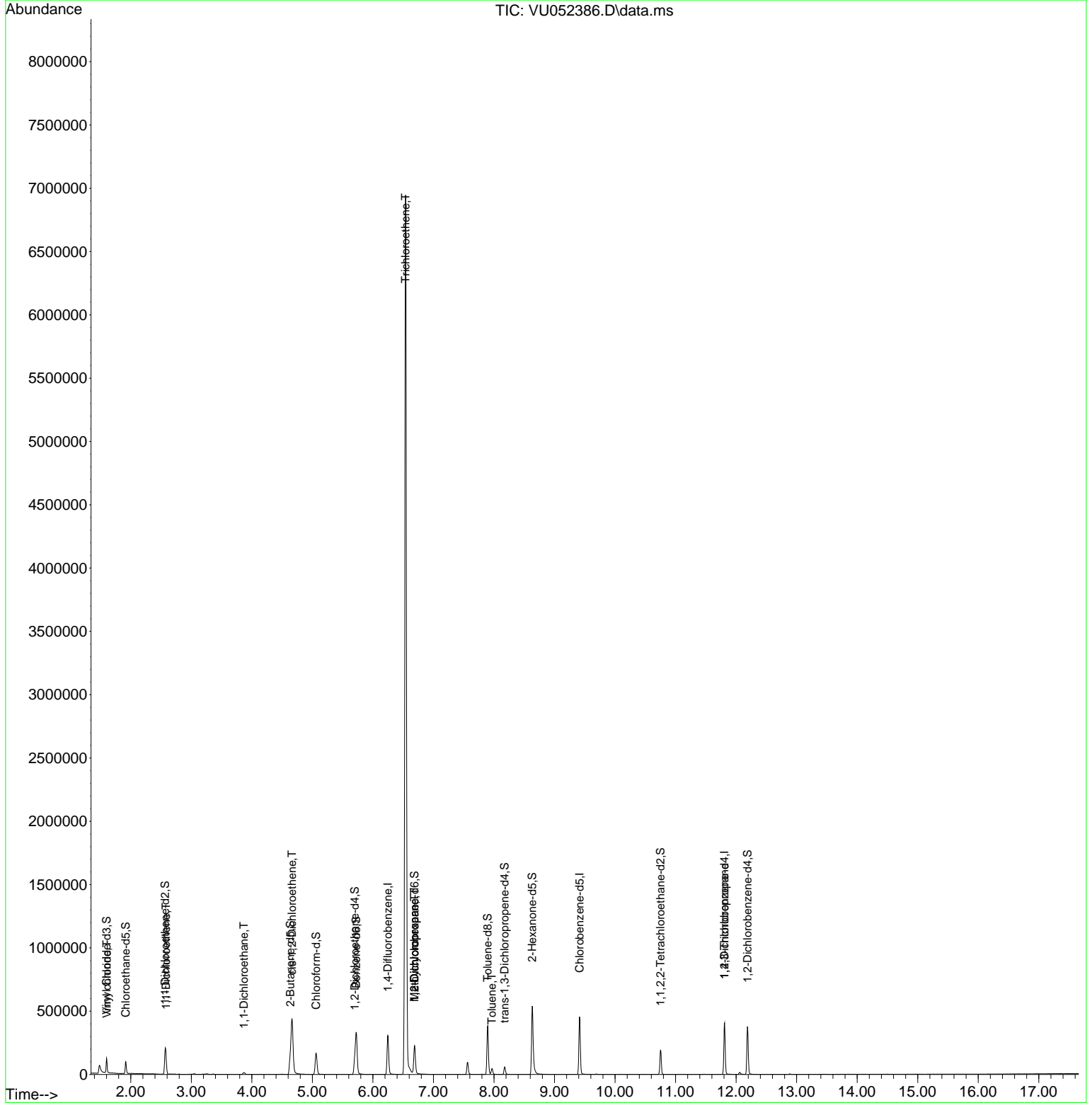
Compound	R.T.	QIon	Response	Conc	Units	Dev(Min)
Internal Standards						
1) 1,4-Difluorobenzene	6.247	114	253512	5.000	ug/L	0.00
28) Chlorobenzene-d5	9.414	117	266305	5.000	ug/L	0.00
58) 1,4-Dichlorobenzene-d4	11.809	152	113531	5.000	ug/L	0.00
System Monitoring Compounds						
4) Vinyl Chloride-d3	1.600	65	77661	3.149	ug/L	0.00
Spiked Amount	5.000	Range 40 - 130	Recovery	=	63.000%	
7) Chloroethane-d5	1.915	69	74034	3.865	ug/L	0.00
Spiked Amount	5.000	Range 65 - 130	Recovery	=	77.400%	
11) 1,1-Dichloroethene-d2	2.568	65	32842	3.716	ug/L	0.00
Spiked Amount	5.000	Range 60 - 125	Recovery	=	74.400%	
20) 2-Butanone-d5	4.636	46	255385	57.136	ug/L	0.00
Spiked Amount	50.000	Range 40 - 130	Recovery	=	114.280%	
24) Chloroform-d	5.060	84	163276	4.506	ug/L	0.00
Spiked Amount	5.000	Range 70 - 125	Recovery	=	90.200%	
26) 1,2-Dichloroethane-d4	5.700	65	86377	4.720	ug/L	0.00
Spiked Amount	5.000	Range 70 - 130	Recovery	=	94.400%	
32) Benzene-d6	5.726	84	327755	4.146	ug/L	0.00
Spiked Amount	5.000	Range 70 - 125	Recovery	=	83.000%	
36) 1,2-Dichloropropane-d6	6.687	67	113877	4.654	ug/L	0.00
Spiked Amount	5.000	Range 60 - 140	Recovery	=	93.000%	
41) Toluene-d8	7.896	98	268228	3.750	ug/L	0.00
Spiked Amount	5.000	Range 70 - 130	Recovery	=	75.000%	
43) trans-1,3-Dichloroprop...	8.176	79	35650	3.998	ug/L	0.00
Spiked Amount	5.000	Range 55 - 130	Recovery	=	80.000%	
46) 2-Hexanone-d5	8.632	63	186908	49.465	ug/L	0.00
Spiked Amount	50.000	Range 45 - 130	Recovery	=	98.940%	
56) 1,1,2,2-Tetrachloroeth...	10.751	84	100047	4.716	ug/L	0.00
Spiked Amount	5.000	Range 65 - 120	Recovery	=	94.400%	
66) 1,2-Dichlorobenzene-d4	12.188	152	104181	4.793	ug/L	0.00
Spiked Amount	5.000	Range 80 - 120	Recovery	=	95.800%	
Target Compounds						
5) Vinyl chloride	1.607	62	5732	0.208	ug/L #	1
12) 1,1-Dichloroethene	2.581	96	24750	1.346	ug/L #	49
19) 1,1-Dichloroethane	3.870	63	18363	0.517	ug/L	98
22) cis-1,2-Dichloroethene	4.665	96	204738	9.896	ug/L	98
34) Trichloroethene	6.539	95	2456241	113.626	ug/L	99
35) Methylcyclohexane	6.687	83	25656	0.825	ug/L #	19
37) 1,2-Dichloropropane	6.687	63	11156	0.497	ug/L #	89
42) Toluene	7.967	91	34809	0.390	ug/L	99
61) 1,2,3-Trichloropropane	11.809	75	13545	1.042	ug/L #	67

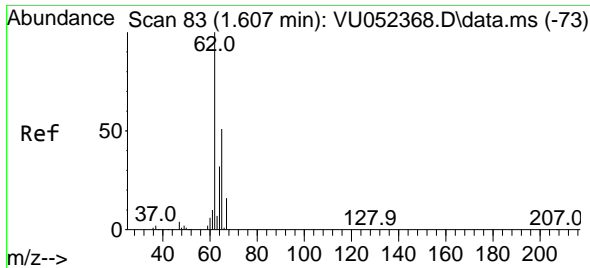
(#) = qualifier out of range (m) = manual integration (+) = signals summed

Data Path : Z:\voasrv\HPCHEM1\MSVOA_U\Data\VU121322\
 Data File : VU052386.D
 Acq On : 13 Dec 2022 18:42
 Operator : JC/MD
 Sample : N6034-03
 Misc : 25.0mL/MSVOA_U/WATER
 ALS Vial : 22 Sample Multiplier: 1

Instrument :
 MSVOA_U
 ClientSampleId :
 C0L32

Quant Time: Dec 14 03:22:04 2022
 Quant Method : Z:\voasrv\HPCHEM1\MSVOA_U\Method\SFAMUTR111822WMA.M
 Quant Title : TRACE VOA SFAM1.0
 QLast Update : Wed Dec 14 03:17:56 2022
 Response via : Initial Calibration

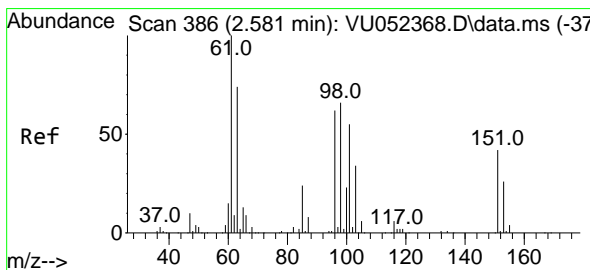
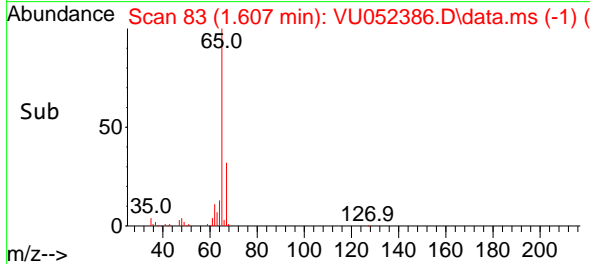
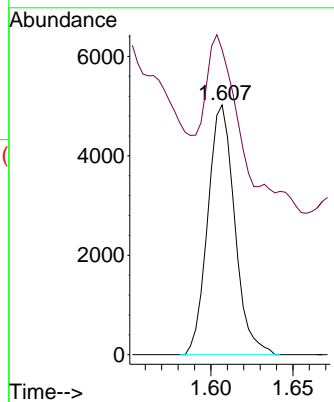
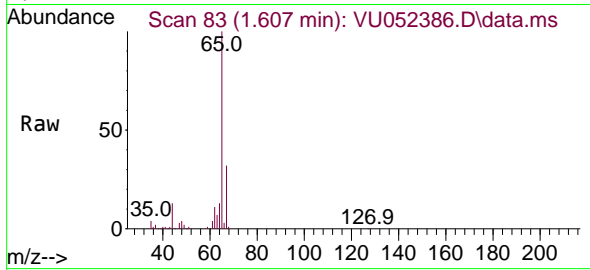




#5
 Vinyl chloride
 Concen: 0.208 ug/L
 RT: 1.607 min Scan# 81
 Delta R.T. -0.000 min
 Lab File: VU052386.D
 Acq: 13 Dec 2022 18:42

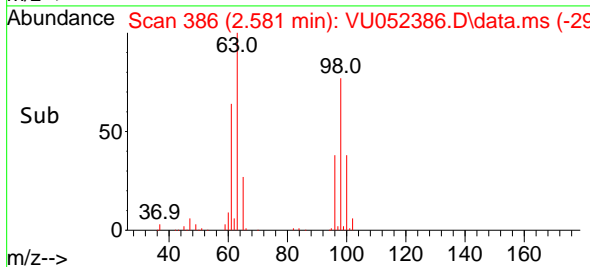
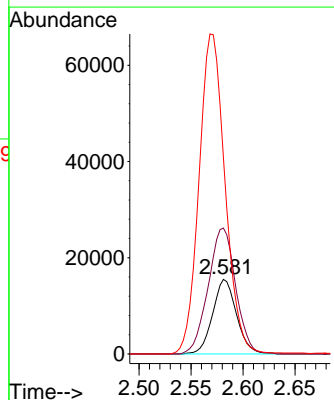
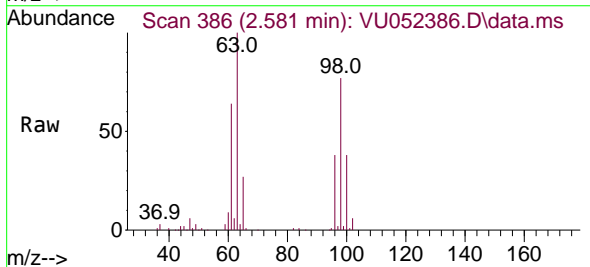
Instrument :
 MSVOA_U
 ClientSampleId :
 COL32

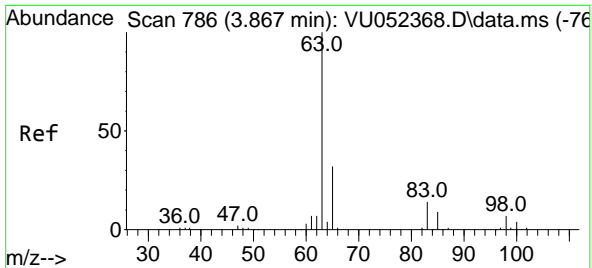
Tgt Ion: 62 Resp: 5732
 Ion Ratio Lower Upper
 62 100
 64 122.1 23.5 43.7#



#12
 1,1-Dichloroethene
 Concen: 1.346 ug/L
 RT: 2.581 min Scan# 386
 Delta R.T. -0.000 min
 Lab File: VU052386.D
 Acq: 13 Dec 2022 18:42

Tgt Ion: 96 Resp: 24750
 Ion Ratio Lower Upper
 96 100
 61 168.9 114.8 213.2
 63 263.8 93.7 174.1#

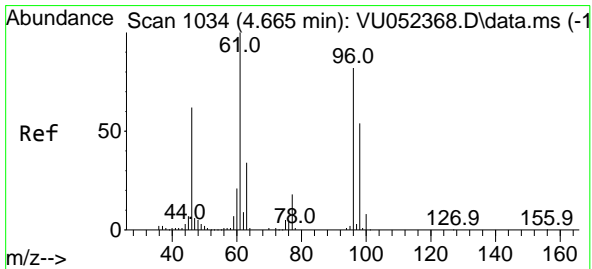
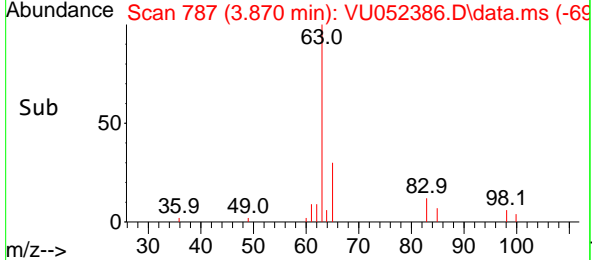
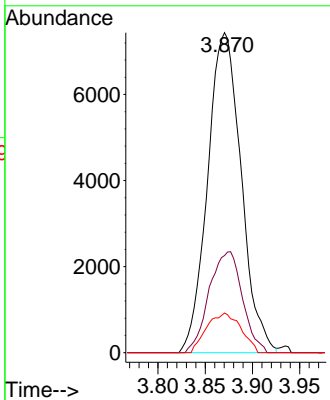
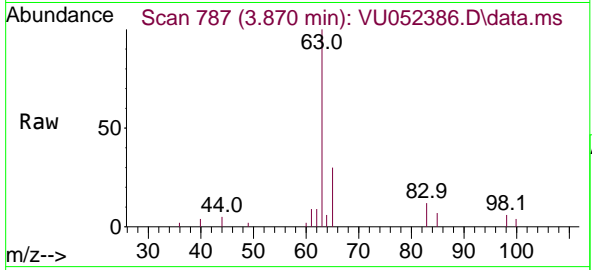




#19
 1,1-Dichloroethane
 Concen: 0.517 ug/L
 RT: 3.870 min Scan# 786
 Delta R.T. 0.003 min
 Lab File: VU052386.D
 Acq: 13 Dec 2022 18:42

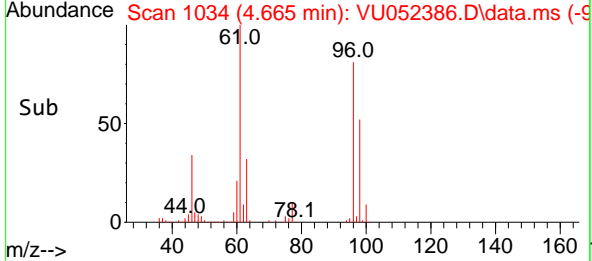
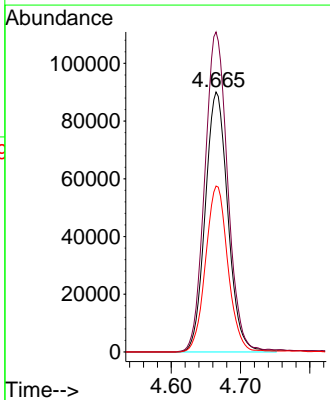
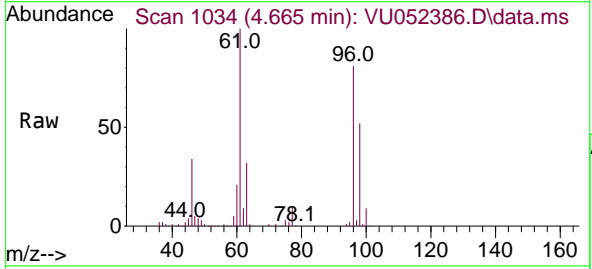
Instrument : MSVOA_U
 ClientSampleId : COL32

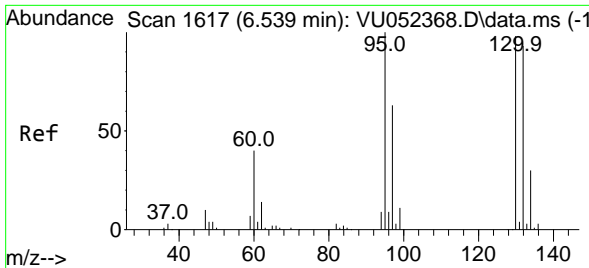
Tgt Ion	Resp	Lower	Upper
63	18363		
65	30.3	22.2	41.2
83	12.4	9.2	17.0



#22
 cis-1,2-Dichloroethene
 Concen: 9.896 ug/L
 RT: 4.665 min Scan# 1034
 Delta R.T. -0.000 min
 Lab File: VU052386.D
 Acq: 13 Dec 2022 18:42

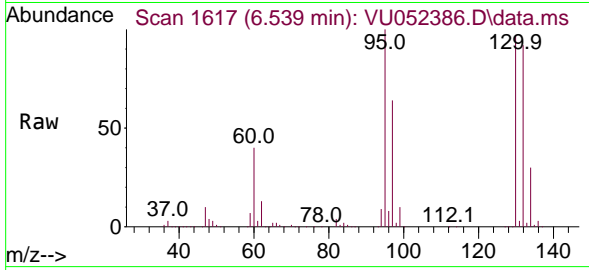
Tgt Ion	Resp	Lower	Upper
96	204738		
61	123.0	85.1	158.1
98	63.8	42.8	79.6





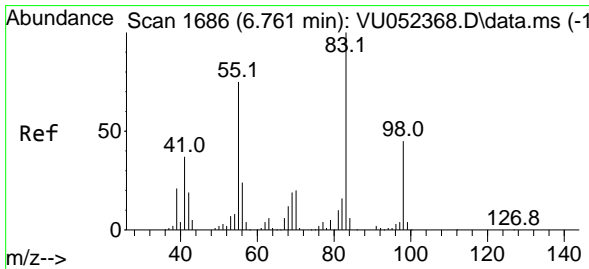
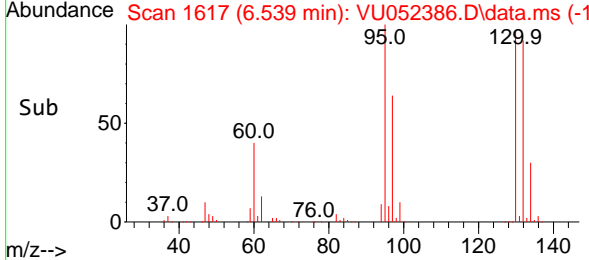
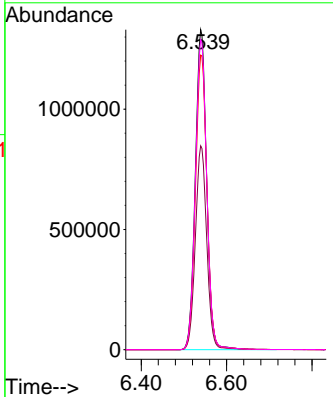
#34
 Trichloroethene
 Concen: 113.626 ug/L
 RT: 6.539 min Scan# 1617
 Delta R.T. -0.000 min
 Lab File: VU052386.D
 Acq: 13 Dec 2022 18:42

Instrument : MSVOA_U
 ClientSampleId : COL32



Tgt Ion: 95 Resp: 2456241

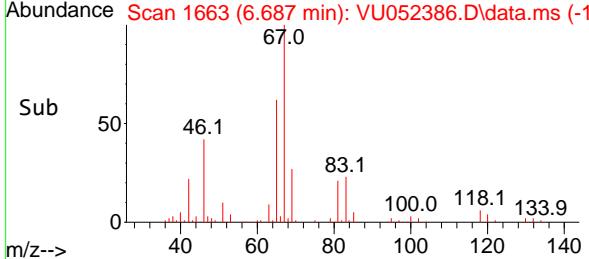
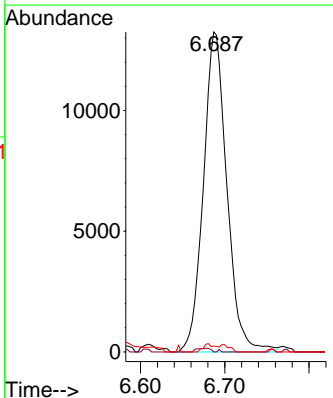
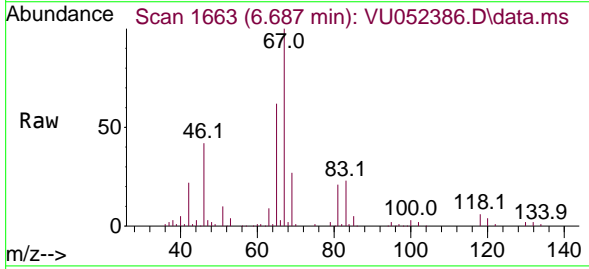
Ion	Ratio	Lower	Upper
95	100		
97	63.7	43.7	81.1
132	92.1	64.3	119.3
130	96.8	67.3	124.9

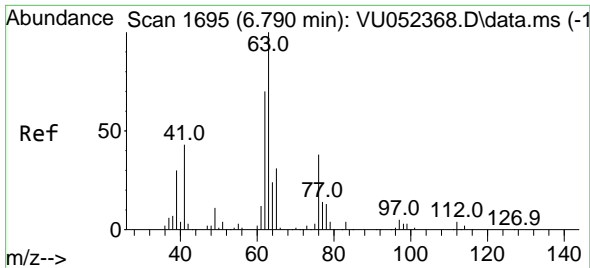


#35
 Methylcyclohexane
 Concen: 0.825 ug/L
 RT: 6.687 min Scan# 1663
 Delta R.T. -0.074 min
 Lab File: VU052386.D
 Acq: 13 Dec 2022 18:42

Tgt Ion: 83 Resp: 25656

Ion	Ratio	Lower	Upper
83	100		
55	0.1	60.8	91.2#
98	0.0	35.1	52.7#

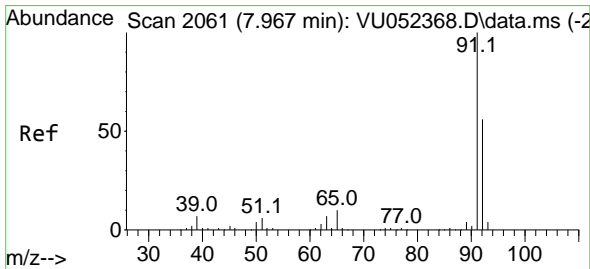
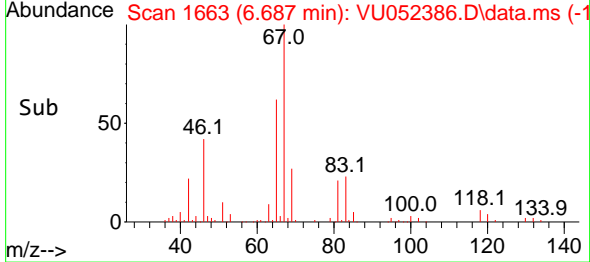
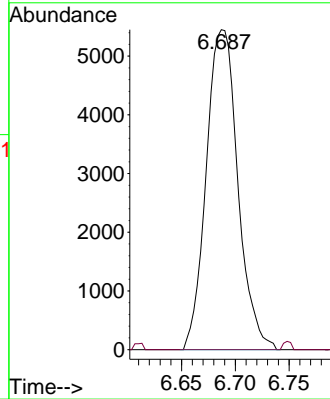
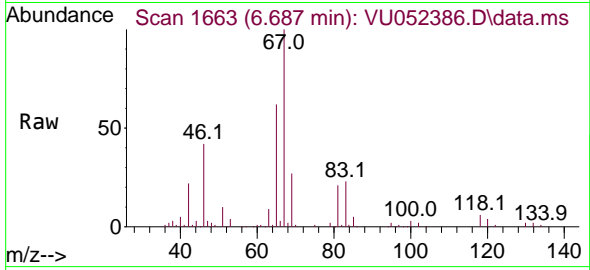




#37
 1,2-Dichloropropane
 Concen: 0.497 ug/L
 RT: 6.687 min Scan# 1
 Delta R.T. -0.103 min
 Lab File: VU052386.D
 Acq: 13 Dec 2022 18:42

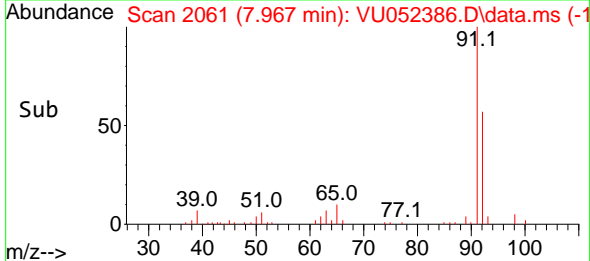
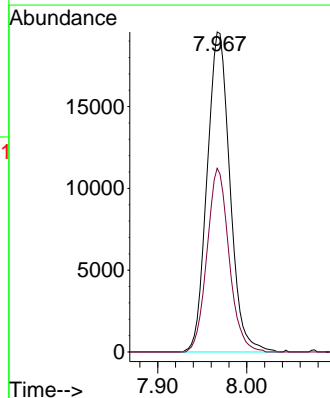
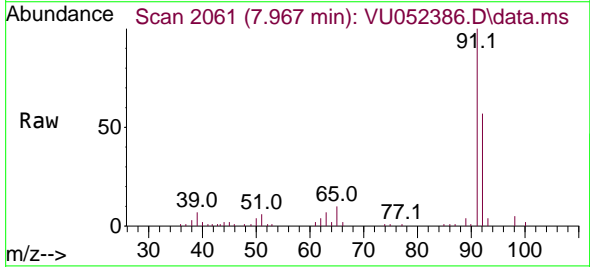
Instrument :
 MSVOA_U
 ClientSampleId :
 COL32

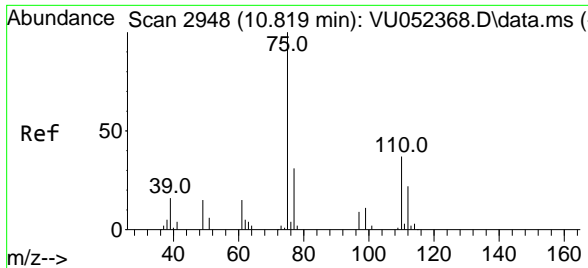
Tgt Ion: 63 Resp: 11156
 Ion Ratio Lower Upper
 63 100
 112 0.6 3.3 4.9#



#42
 Toluene
 Concen: 0.390 ug/L
 RT: 7.967 min Scan# 2061
 Delta R.T. -0.000 min
 Lab File: VU052386.D
 Acq: 13 Dec 2022 18:42

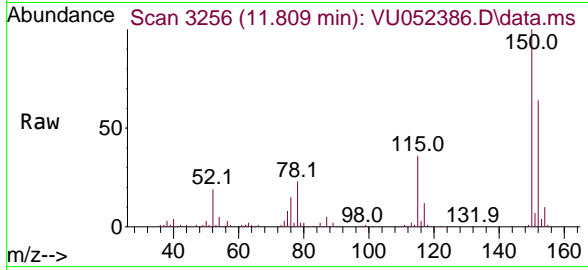
Tgt Ion: 91 Resp: 34809
 Ion Ratio Lower Upper
 91 100
 92 57.4 40.7 75.5





#61
 1,2,3-Trichloropropane
 Concen: 1.042 ug/L
 RT: 11.809 min Scan# 31
 Delta R.T. 0.990 min
 Lab File: VU052386.D
 Acq: 13 Dec 2022 18:42

Instrument :
 MSVOA_U
 ClientSampleId :
 COL32



Tgt Ion: 75 Resp: 13545

Ion	Ratio	Lower	Upper
75	100		
110	1.5	28.3	42.5#
77	29.6	26.2	39.2

