

Data Path : Z:\VOASRV\HPCHEM1\MSVOA U\DATA\VU121420\
 Data File : VU041613.D
 Acq On : 14 Dec 2020 16:10
 Operator : SY/MD
 Sample : VIBLK06
 Misc : 25.0mL/MSVOA U/WATER
 ALS Vial : 14 Sample Multiplier: 1

Instrument :
 MSVOA_U
 ClientSampleId :
 VIBLK06

Quant Time: Dec 15 01:22:08 2020
 Quant Method : Z:\VOASRV\HPCHEM1\MSVOA_U\METHOD\SOMUTR121220WMA.M
 Quant Title : TRACE VOA SOM01.0
 QLast Update : Tue Dec 15 00:46:25 2020
 Response via : Initial Calibration

Internal Standards	R.T.	QIon	Response	Conc	Units	Dev(Min)
1) 1,4-Difluorobenzene	6.26	114	146033	5.00	ug/L	0.00
28) Chlorobenzene-d5	9.42	117	139282	5.00	ug/L	0.00
60) 1,4-Dichlorobenzene-d4	11.81	152	59189	5.00	ug/L	0.00

System Monitoring Compounds

4) Vinyl Chloride-d3	1.60	65	42685	3.74	ug/L	0.00
Spiked Amount	5.000	Range	40 - 130	Recovery	=	74.80%
7) Chloroethane-d5	1.92	69	35288	3.99	ug/L	0.00
Spiked Amount	5.000	Range	65 - 130	Recovery	=	79.80%
11) 1,1-Dichloroethene-d2	2.57	63	65340	3.11	ug/L	0.00
Spiked Amount	5.000	Range	60 - 125	Recovery	=	62.20%
20) 2-Butanone-d5	4.66	46	142832	43.55	ug/L	0.01
Spiked Amount	50.000	Range	40 - 130	Recovery	=	87.10%
24) Chloroform-d	5.08	84	78011	3.99	ug/L	0.00
Spiked Amount	5.000	Range	70 - 125	Recovery	=	79.80%
26) 1,2-Dichloroethane-d4	5.72	65	46783	4.22	ug/L	0.00
Spiked Amount	5.000	Range	70 - 130	Recovery	=	84.40%
32) Benzene-d6	5.74	84	162273	4.07	ug/L	0.00
Spiked Amount	5.000	Range	70 - 125	Recovery	=	81.40%
36) 1,2-Dichloropropane-d6	6.70	67	51255	4.10	ug/L	0.00
Spiked Amount	5.000	Range	60 - 140	Recovery	=	82.00%
41) Toluene-d8	7.90	98	142623	3.96	ug/L	0.00
Spiked Amount	5.000	Range	70 - 130	Recovery	=	79.20%
43) trans-1,3-Dichloropropene-	8.18	79	21845	3.89	ug/L	0.00
Spiked Amount	5.000	Range	55 - 130	Recovery	=	77.80%
46) 2-Hexanone-d5	8.64	63	125893	40.96	ug/L	0.00
Spiked Amount	50.000	Range	45 - 130	Recovery	=	81.92%
57) 1,1,2,2-Tetrachloroethane-	10.75	84	46564	4.10	ug/L	0.00
Spiked Amount	5.000	Range	65 - 120	Recovery	=	82.00%
64) 1,2-Dichlorobenzene-d4	12.19	152	48450	4.60	ug/L	0.00
Spiked Amount	5.000	Range	80 - 120	Recovery	=	92.00%

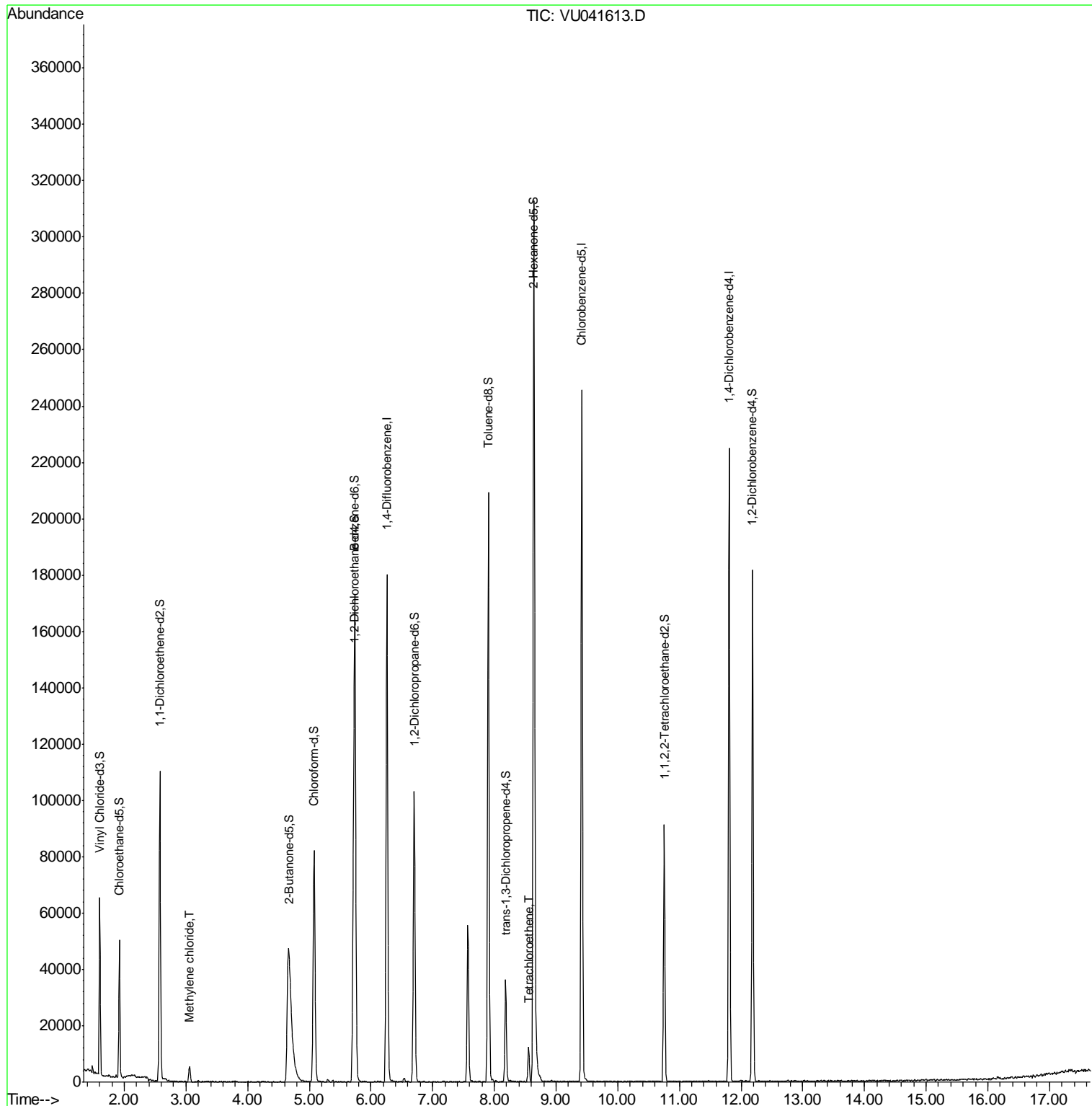
Target Compounds					Ovalue
16) Methylene chloride	3.06	84	2641	0.223 ug/L	90
47) Tetrachloroethene	8.56	164	2658	0.339 ug/L	92

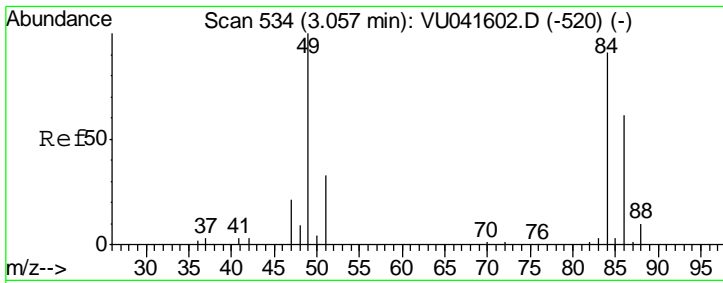
(#) = qualifier out of range (m) = manual integration (+) = signals summed

Data Path : Z:\VOASRV\HPCHEM1\MSVOA U\DATA\VU121420\
 Data File : VU041613.D
 Acq On : 14 Dec 2020 16:10
 Operator : SY/MD
 Sample : VIBLK06
 Misc : 25.0mL/MSVOA U/WATER
 ALS Vial : 14 Sample Multiplier: 1

Instrument :
 MSVOA_U
 Client Sampled :
 VIBLK06

Quant Time: Dec 15 01:22:08 2020
 Quant Method : Z:\VOASRV\HPCHEM1\MSVOA_U\METHOD\SOMUTR121220WMA.M
 Quant Title : TRACE VOA SOM01.0
 QLast Update : Tue Dec 15 00:46:25 2020
 Response via : Initial Calibration

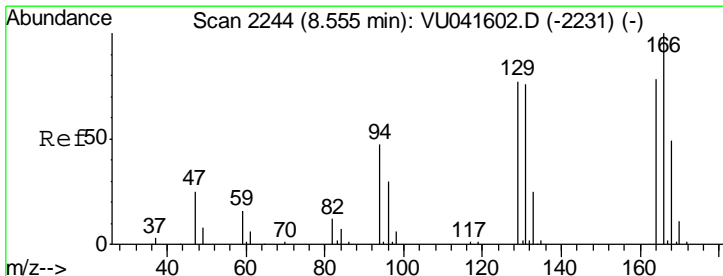
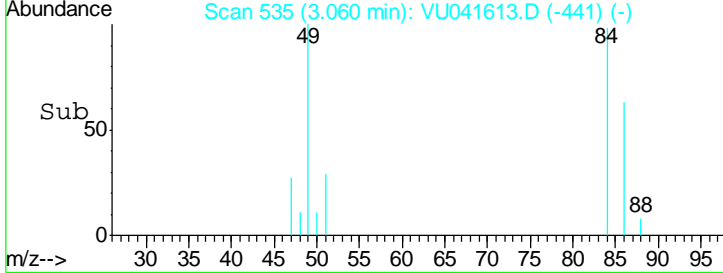
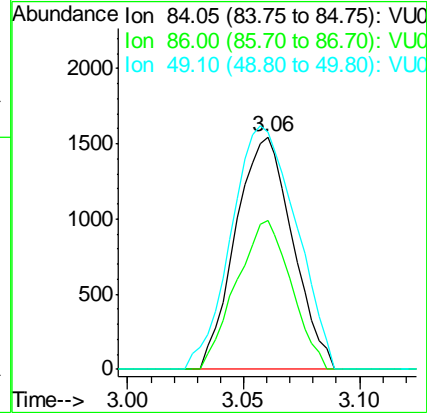
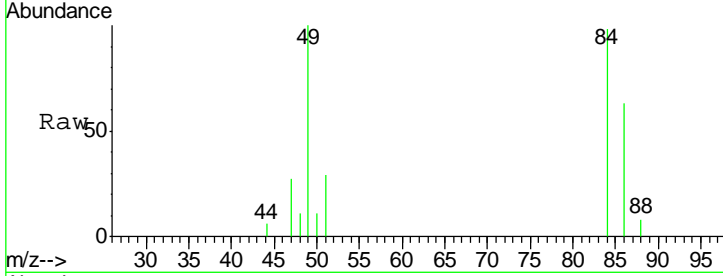




#16
 Methylene chloride
 Concen: 0.223 ug/L
 RT: 3.06 min Scan# 535
 Delta R.T. 0.00 min
 Lab File: VU041613.D
 Acq: 14 Dec 2020 16:10

Instrument :
 MSVOA_U
ClientSampled :
 VIBLK06

Tgt Ion	Resp	Lower	Upper
84	100		
86	63.9	45.1	83.7
49	101.8	83.1	154.3



#47
 Tetrachloroethene
 Concen: 0.339 ug/L
 RT: 8.56 min Scan# 2244
 Delta R.T. -0.00 min
 Lab File: VU041613.D
 Acq: 14 Dec 2020 16:10

Tgt Ion	Resp	Lower	Upper
164	100		
129	89.8	72.2	134.0
131	86.2	66.9	124.3
166	124.4	89.6	166.4

