

Data Path : Z:\VOASRV\HPCHEM1\MSVOA U\DATA\VU121520\
 Data File : VU041647.D
 Acq On : 15 Dec 2020 19:30
 Operator : SY/MD
 Sample : L5027-22
 Misc : 25.0mL/MSVOA U/WATER
 ALS Vial : 23 Sample Multiplier: 1

Instrument :
 MSVOA_U
 ClientSampled :
 VHBLK01

Quant Time: Dec 16 04:37:14 2020
 Quant Method : Z:\VOASRV\HPCHEM1\MSVOA_U\METHOD\SOMUTR121220WMA.M
 Quant Title : TRACE VOA SOM01.0
 QLast Update : Wed Dec 16 04:34:43 2020
 Response via : Initial Calibration

Internal Standards	R.T.	QIon	Response	Conc	Units	Dev(Min)
1) 1,4-Difluorobenzene	6.26	114	116495	5.00	ug/L	0.00
28) Chlorobenzene-d5	9.42	117	111016	5.00	ug/L	0.00
60) 1,4-Dichlorobenzene-d4	11.81	152	49384	5.00	ug/L	0.00

System Monitoring Compounds

4) Vinyl Chloride-d3	1.60	65	42030	4.62	ug/L	0.00
Spiked Amount	5.000	Range	40 - 130	Recovery	=	92.40%
7) Chloroethane-d5	1.92	69	36578	5.19	ug/L	0.00
Spiked Amount	5.000	Range	65 - 130	Recovery	=	103.80%
11) 1,1-Dichloroethene-d2	2.58	63	59519	3.55	ug/L	0.00
Spiked Amount	5.000	Range	60 - 125	Recovery	=	71.00%
20) 2-Butanone-d5	4.67	46	140350	53.65	ug/L	0.00
Spiked Amount	50.000	Range	40 - 130	Recovery	=	107.30%
24) Chloroform-d	5.08	84	76566	4.91	ug/L	0.00
Spiked Amount	5.000	Range	70 - 125	Recovery	=	98.20%
26) 1,2-Dichloroethane-d4	5.72	65	45608	5.15	ug/L	0.00
Spiked Amount	5.000	Range	70 - 130	Recovery	=	103.00%
32) Benzene-d6	5.74	84	152387	4.79	ug/L	0.00
Spiked Amount	5.000	Range	70 - 125	Recovery	=	95.80%
36) 1,2-Dichloropropane-d6	6.70	67	47996	4.82	ug/L	0.00
Spiked Amount	5.000	Range	60 - 140	Recovery	=	96.40%
41) Toluene-d8	7.91	98	132702	4.62	ug/L	0.00
Spiked Amount	5.000	Range	70 - 130	Recovery	=	92.40%
43) trans-1,3-Dichloropropene-	8.19	79	21055	4.70	ug/L	0.00
Spiked Amount	5.000	Range	55 - 130	Recovery	=	94.00%
46) 2-Hexanone-d5	8.64	63	122631	50.06	ug/L	0.00
Spiked Amount	50.000	Range	45 - 130	Recovery	=	100.12%
57) 1,1,2,2-Tetrachloroethane-	10.75	84	45975	5.08	ug/L	0.00
Spiked Amount	5.000	Range	65 - 120	Recovery	=	101.60%
64) 1,2-Dichlorobenzene-d4	12.19	152	45745	5.21	ug/L	0.00
Spiked Amount	5.000	Range	80 - 120	Recovery	=	104.20%

Target Compounds

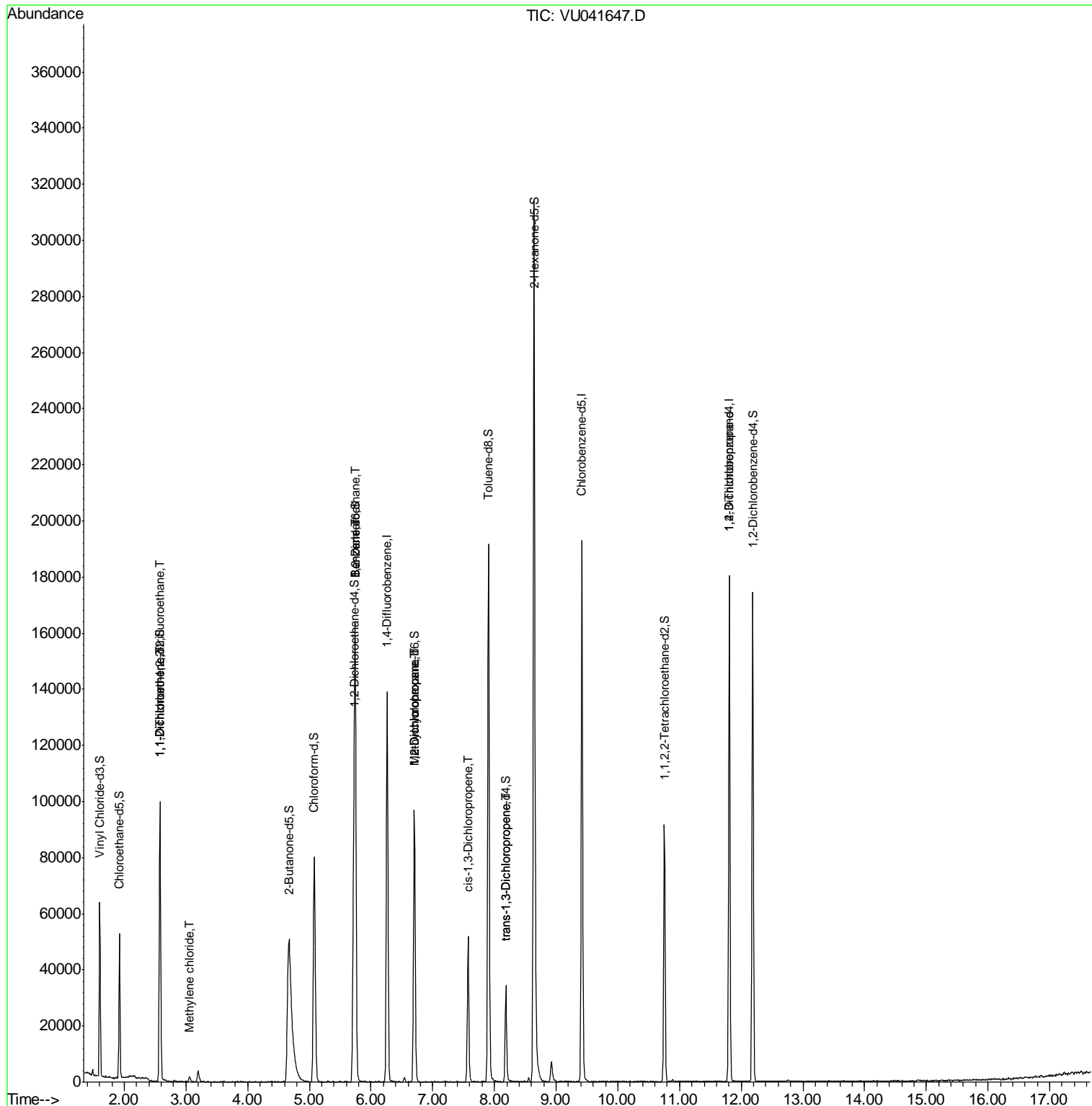
Target Compounds	R.T.	QIon	Response	Conc	Units	Ovalue
10) 1,1,2-Trichloro-1,2,2-trif	2.58	101	548	0.068	ug/L #	22
12) 1,1-Dichloroethene	2.57	96	539	0.068	ug/L #	1
16) Methylene chloride	3.06	84	1059	0.112	ug/L	83
27) 1,2-Dichloroethane	5.75	62	857	0.082	ug/L #	73
33) Benzene	5.74	78	1204	0.034	ug/L	100
35) Methylcyclohexane	6.70	83	10779	0.747	ug/L #	20
37) 1,2-Dichloropropane	6.70	63	4872	0.536	ug/L #	88
39) cis-1,3-Dichloropropene	7.57	75	1293	0.096	ug/L #	51
44) trans-1,3-Dichloropropene	8.18	75	698	0.058	ug/L #	50
59) 1,2,3-Trichloropropane	11.81	75	5471	0.802	ug/L	96

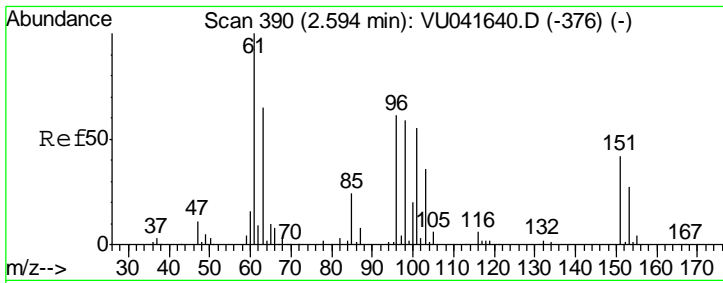
(#) = qualifier out of range (m) = manual integration (+) = signals summed

Data Path : Z:\VOASRV\HPCHEM1\MSVOA U\DATA\VU121520\
 Data File : VU041647.D
 Acq On : 15 Dec 2020 19:30
 Operator : SY/MD
 Sample : L5027-22
 Misc : 25.0mL/MSVOA U/WATER
 ALS Vial : 23 Sample Multiplier: 1

Instrument :
 MSVOA_U
 ClientSampled :
 VHBLK01

Quant Time: Dec 16 04:37:14 2020
 Quant Method : Z:\VOASRV\HPCHEM1\MSVOA_U\METHOD\SOMUTR121220WMA.M
 Quant Title : TRACE VOA SOM01.0
 QLast Update : Wed Dec 16 04:34:43 2020
 Response via : Initial Calibration

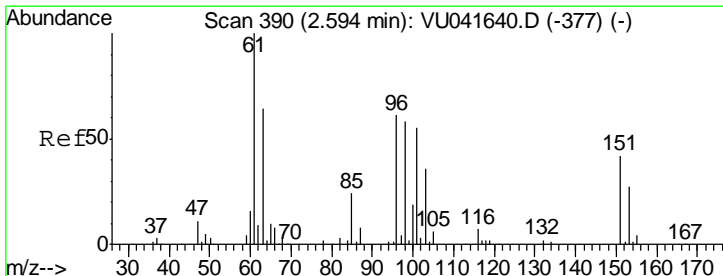
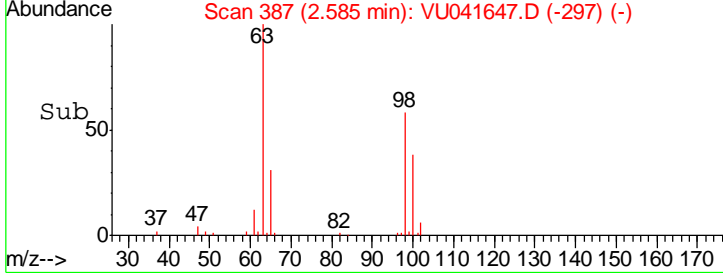
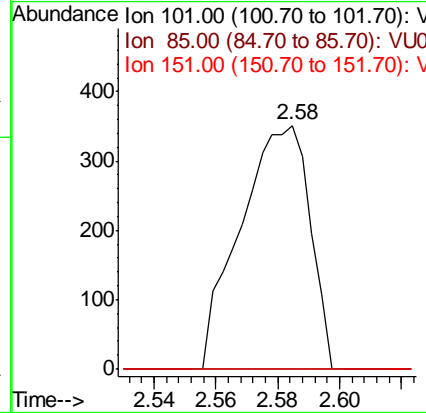
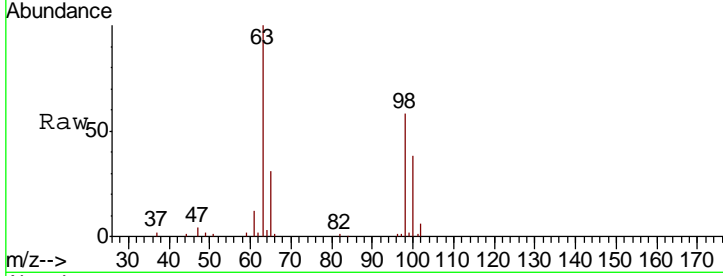




#10
 1,1,2-Trichloro-1,2,2-trifluoroethane
 Concen: 0.068 ug/L
 RT: 2.58 min Scan# 387
 Delta R.T. -0.01 min
 Lab File: VU041647.D
 Acq: 15 Dec 2020 19:30

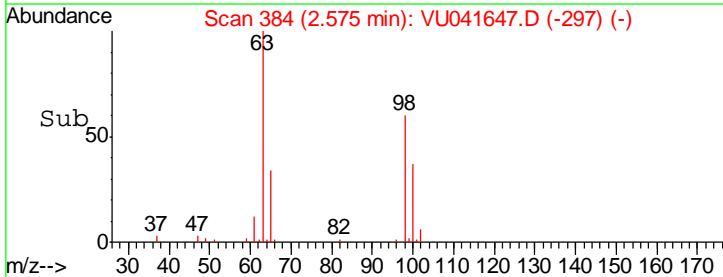
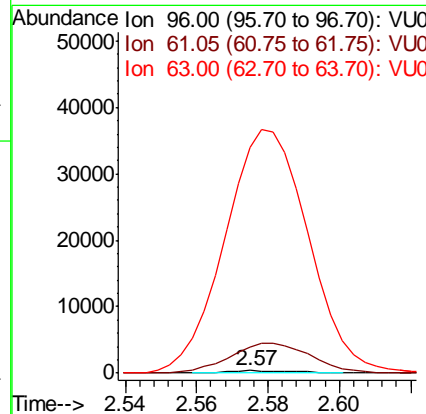
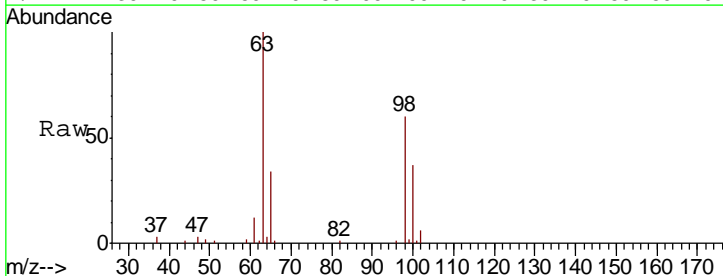
Instrument :
 MSVOA_U
 ClientSampled :
 VHBLK01

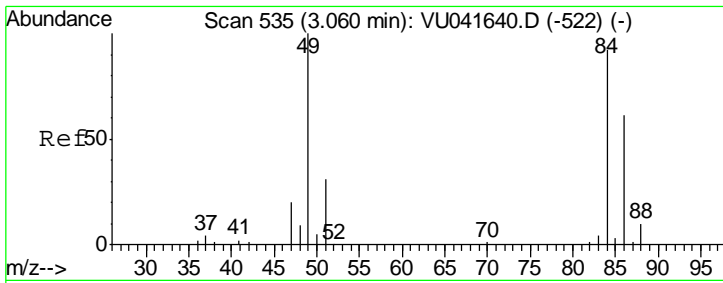
Tgt Ion	Resp	Lower	Upper
101	548		
101	100		
85	0.0	33.6	50.4#
151	0.0	56.2	84.4#



#12
 1,1-Dichloroethene
 Concen: 0.068 ug/L
 RT: 2.57 min Scan# 384
 Delta R.T. -0.02 min
 Lab File: VU041647.D
 Acq: 15 Dec 2020 19:30

Tgt Ion	Resp	Lower	Upper
96	539		
96	100		
61	1084.7	123.8	230.0#
63	9286.6	81.0	150.4#

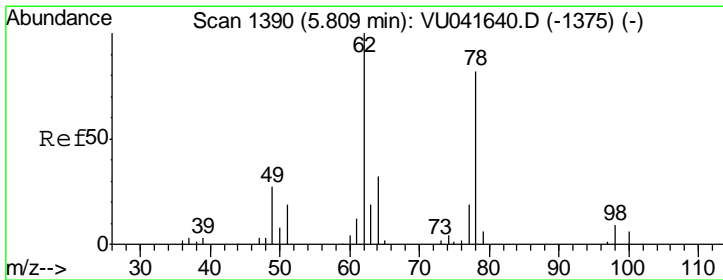
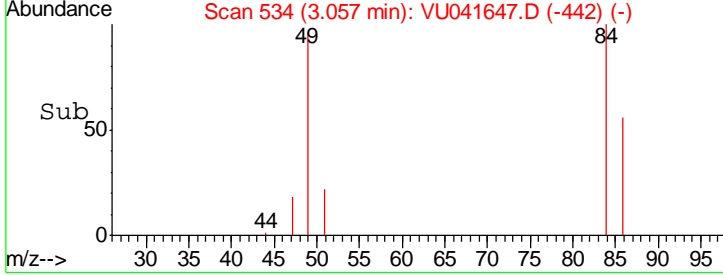
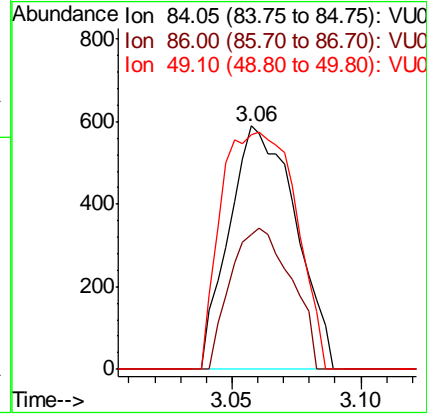
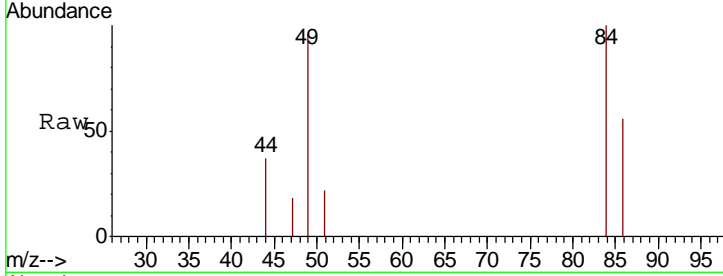




#16
 Methylene chloride
 Concen: 0.112 ug/L
 RT: 3.06 min Scan# 534
 Delta R.T. -0.00 min
 Lab File: VU041647.D
 Acq: 15 Dec 2020 19:30

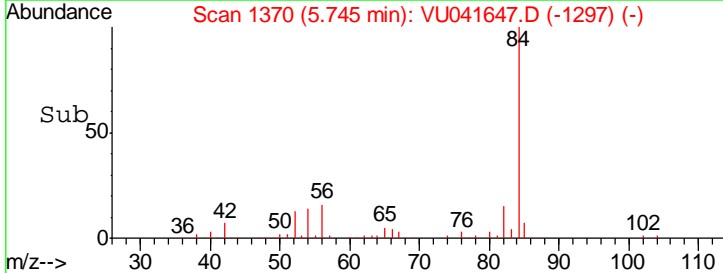
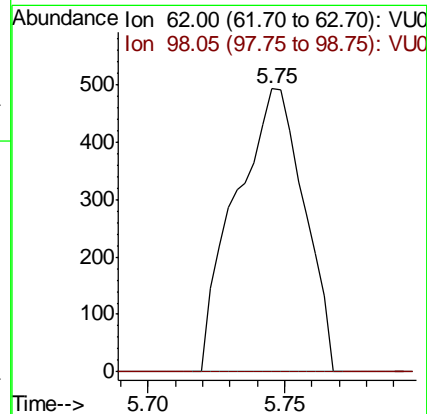
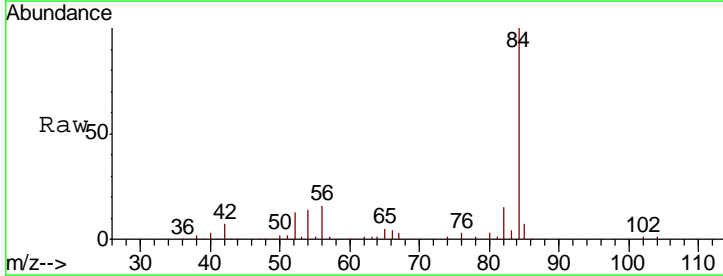
Instrument :
 MSVOA_U
 ClientSampled :
 VHBLK01

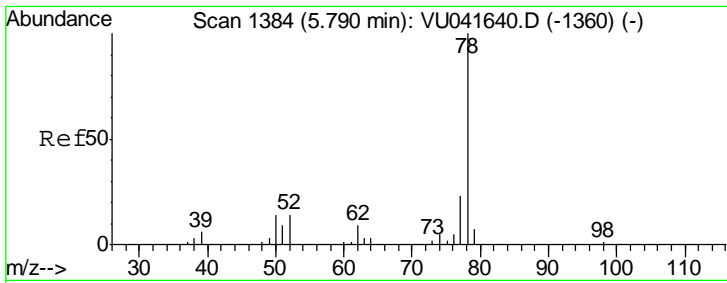
Tgt Ion	Resp	Lower	Upper
84	1059		
86	55.6	45.1	83.7
49	96.4	83.1	154.3



#27
 1,2-Dichloroethane
 Concen: 0.082 ug/L
 RT: 5.75 min Scan# 1370
 Delta R.T. -0.06 min
 Lab File: VU041647.D
 Acq: 15 Dec 2020 19:30

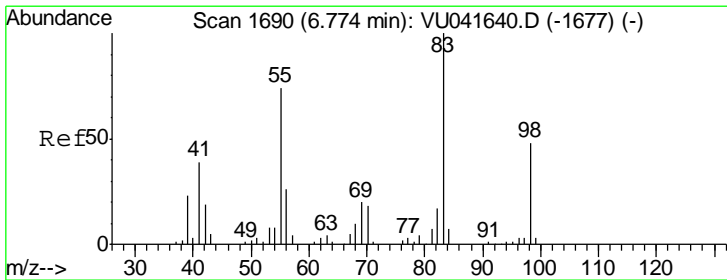
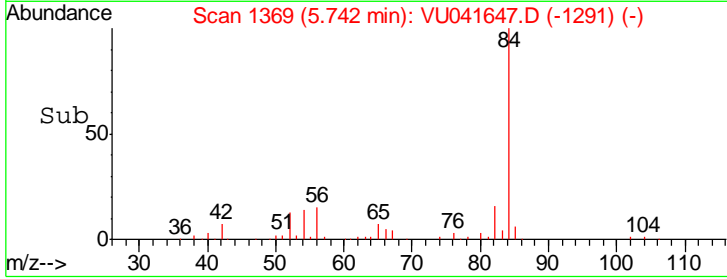
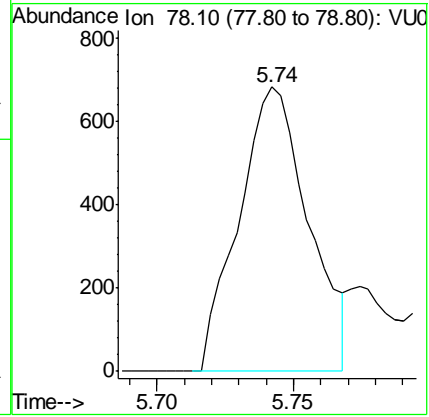
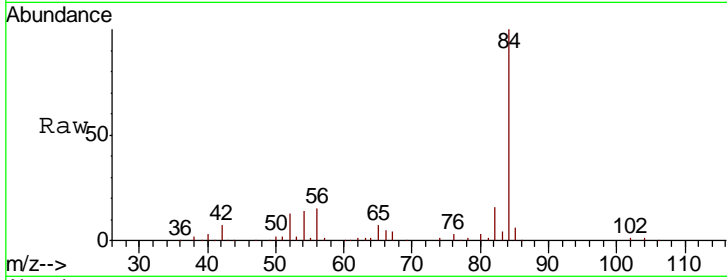
Tgt Ion	Resp	Lower	Upper
62	857		
98	0.0	8.2	12.2#





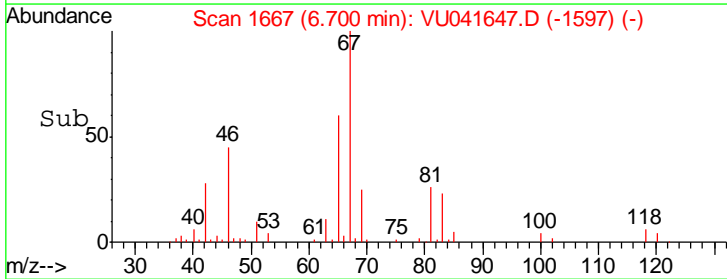
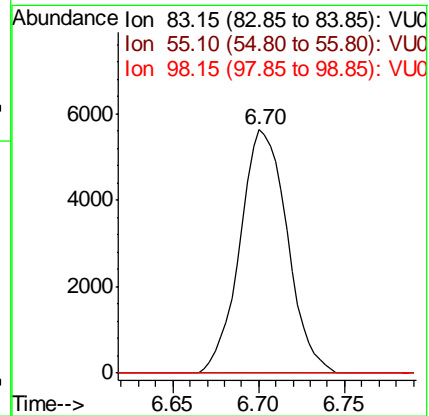
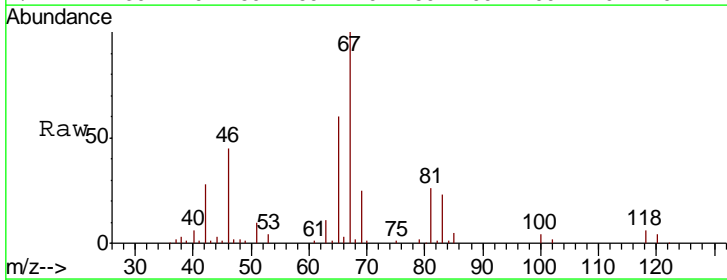
#33
 Benzene
 Concen: 0.034 ug/L
 RT: 5.74 min Scan# 1369
 Delta R.T. -0.05 min
 Lab File: VU041647.D
 Acq: 15 Dec 2020 19:30
 Tgt Ion: 78 Resp: 1204

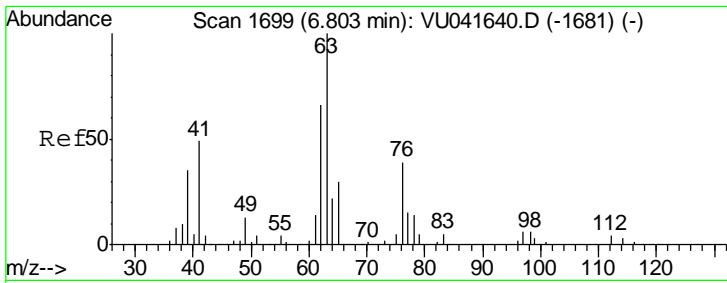
Instrument : MSVOA_U
 ClientSampled : VHBLK01



#35
 Methylcyclohexane
 Concen: 0.747 ug/L
 RT: 6.70 min Scan# 1667
 Delta R.T. -0.07 min
 Lab File: VU041647.D
 Acq: 15 Dec 2020 19:30
 Tgt Ion: 83 Resp: 10779

Ion	Ratio	Lower	Upper
83	100		
55	0.0	61.2	91.8#
98	2.9	36.6	54.8#

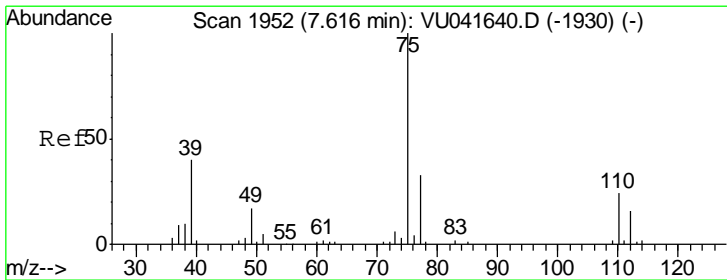
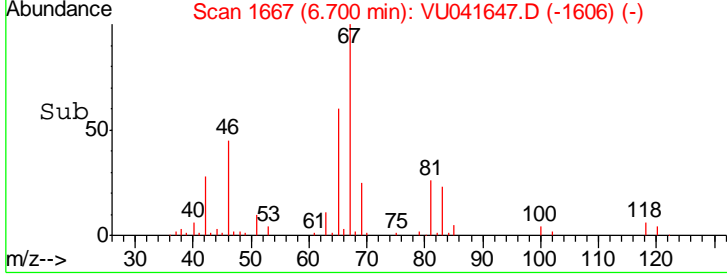
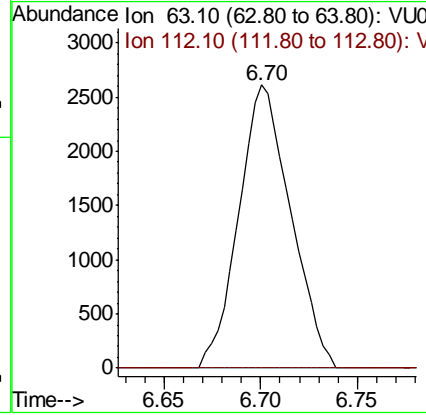
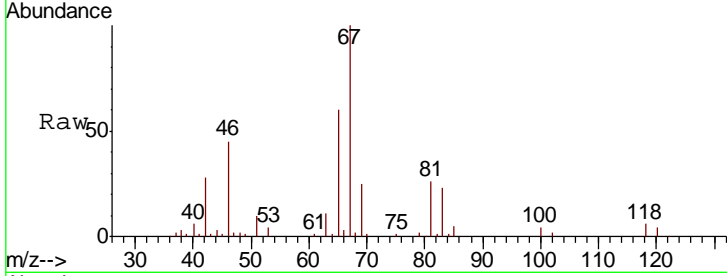




#37
 1,2-Dichloropropane
 Concen: 0.536 ug/L
 RT: 6.70 min Scan# 1667
 Delta R.T. -0.10 min
 Lab File: VU041647.D
 Acq: 15 Dec 2020 19:30

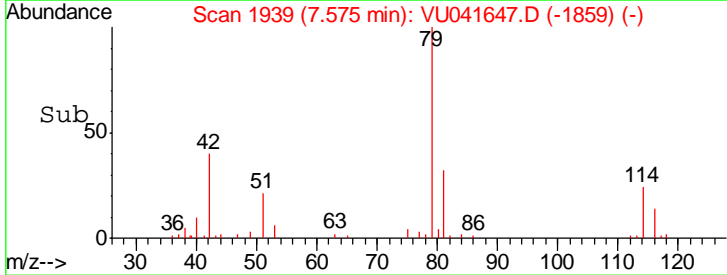
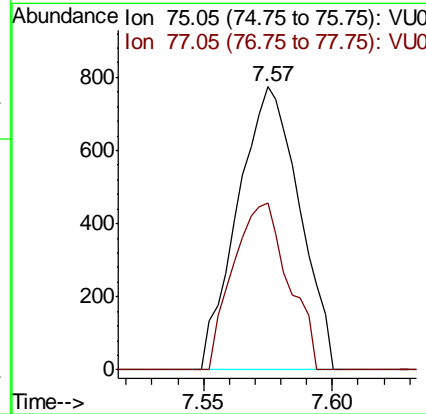
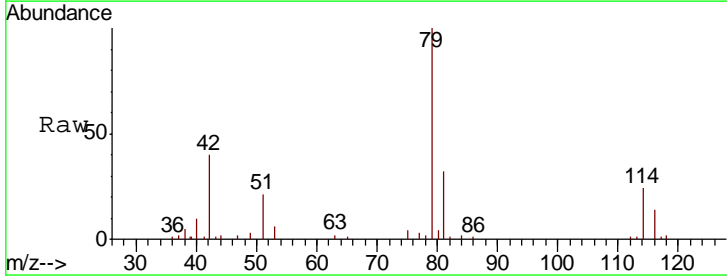
Instrument :
 MSVOA_U
ClientSampled :
 VHBLK01

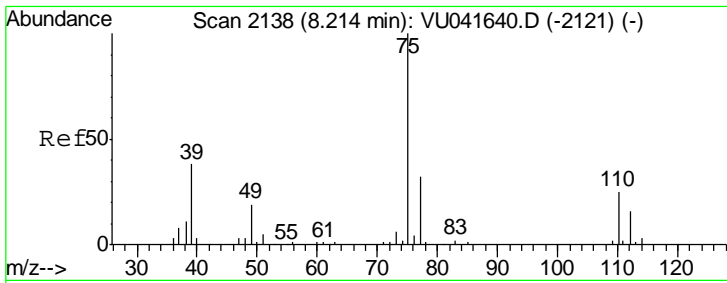
Tgt Ion: 63 Resp: 4872
 Ion Ratio Lower Upper
 63 100
 112 0.0 3.1 4.7#



#39
 cis-1,3-Dichloropropene
 Concen: 0.096 ug/L
 RT: 7.57 min Scan# 1939
 Delta R.T. -0.04 min
 Lab File: VU041647.D
 Acq: 15 Dec 2020 19:30

Tgt Ion: 75 Resp: 1293
 Ion Ratio Lower Upper
 75 100
 77 59.0 22.3 41.3#

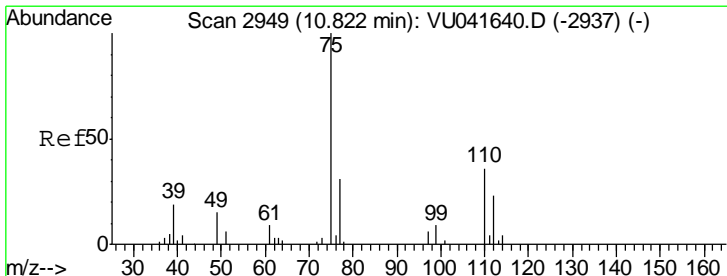
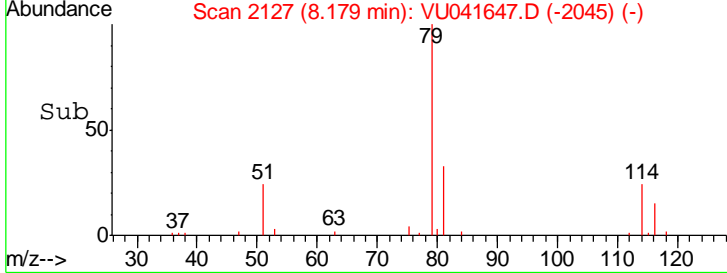
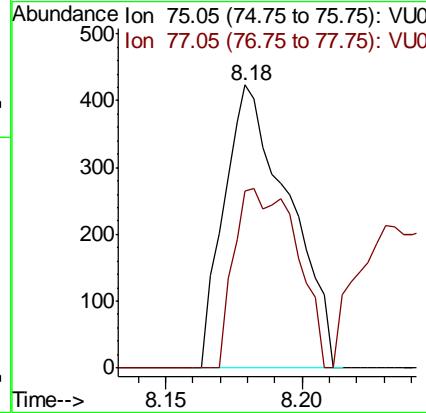
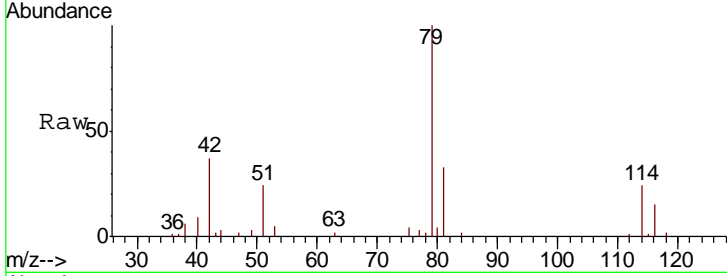




#44
 trans-1,3-Dichloropropene
 Concen: 0.058 ug/L
 RT: 8.18 min Scan# 2127
 Delta R.T. -0.04 min
 Lab File: VU041647.D
 Acq: 15 Dec 2020 19:30

Instrument : MSVOA_U
 ClientSampled : VHBLK01

Tgt Ion: 75 Resp: 698
 Ion Ratio Lower Upper
 75 100
 77 62.4 23.8 44.2#



#59
 1,2,3-Trichloropropane
 Concen: 0.802 ug/L
 RT: 11.81 min Scan# 3255
 Delta R.T. 0.98 min
 Lab File: VU041647.D
 Acq: 15 Dec 2020 19:30

Tgt Ion: 75 Resp: 5471
 Ion Ratio Lower Upper
 75 100
 77 34.7 26.2 39.2

