

Data Path : Z:\voasrv\HPCHEM1\MSVOA\_U\Data\VU121521\  
 Data File : VU046398.D  
 Acq On : 15 Dec 2021 15:48  
 Operator : SY/MD  
 Sample : M5023-20ME  
 Misc : 6.26g/5.0mL/100uL/5.0mL/MSVOA\_U/MEOH  
 ALS Vial : 13 Sample Multiplier: 1

Instrument :  
 MSVOA\_U  
 ClientSampleId :  
 BGKZ8ME

Manual Integrations  
 APPROVED

Reviewed By : John Carlone 12/16/2021  
 Supervised By : Mahesh Dadoda 12/18/2021

Quant Time: Dec 16 03:10:48 2021  
 Quant Method : Z:\voasrv\HPCHEM1\MSVOA\_U\Method\SFAMULM112921WMA.M  
 Quant Title : VOC Analysis  
 QLast Update : Thu Dec 16 02:25:11 2021  
 Response via : Initial Calibration

Compound	R.T.	QIon	Response	Conc	Units	Dev(Min)
Internal Standards						
1) 1,4-Difluorobenzene	6.250	114	162291	50.000	ug/L	0.00
28) Chlorobenzene-d5	9.430	117	170563	50.000	ug/L	0.00
58) 1,4-Dichlorobenzene-d4	11.822	152	79377	50.000	ug/L	0.00
System Monitoring Compounds						
4) Vinyl Chloride-d3	1.601	65	33163	24.806	ug/L	0.00
Spiked Amount	50.000	Range 60 - 135	Recovery =	49.620%#		
7) Chloroethane-d5	1.919	69	27520m	26.811	ug/L	0.00
Spiked Amount	50.000	Range 70 - 130	Recovery =	53.620%#		
11) 1,1-Dichloroethene-d2	2.555	63	50804m	21.169	ug/L	-0.02
Spiked Amount	50.000	Range 60 - 125	Recovery =	42.340%#		
21) 2-Butanone-d5	4.662	46	81580m	76.763	ug/L	0.02
Spiked Amount	100.000	Range 40 - 130	Recovery =	76.760%		
24) Chloroform-d	5.067	84	73132	32.758	ug/L	0.00
Spiked Amount	50.000	Range 70 - 125	Recovery =	65.520%#		
26) 1,2-Dichloroethane-d4	5.706	65	51113	34.115	ug/L	0.00
Spiked Amount	50.000	Range 70 - 125	Recovery =	68.220%#		
32) Benzene-d6	5.726	84	134909	27.596	ug/L	0.00
Spiked Amount	50.000	Range 70 - 125	Recovery =	55.200%#		
36) 1,2-Dichloropropane-d6	6.694	67	45394	29.962	ug/L	0.00
Spiked Amount	50.000	Range 70 - 120	Recovery =	59.920%#		
41) Toluene-d8	7.903	98	114087	25.631	ug/L	0.00
Spiked Amount	50.000	Range 80 - 120	Recovery =	51.260%#		
43) trans-1,3-Dichloroprop...	8.185	79	23014	31.467	ug/L	0.00
Spiked Amount	50.000	Range 60 - 125	Recovery =	62.940%		
47) 2-Hexanone-d5	8.693	63	60609	84.372	ug/L	0.05
Spiked Amount	100.000	Range 45 - 130	Recovery =	84.370%		
56) 1,1,2,2-Tetrachloroeth...	10.777	84	81712	35.563	ug/L	0.02
Spiked Amount	50.000	Range 65 - 120	Recovery =	71.120%		
66) 1,2-Dichlorobenzene-d4	12.201	152	51135	33.451	ug/L	0.00
Spiked Amount	50.000	Range 80 - 120	Recovery =	66.900%#		
Target Compounds						
12) 1,1-Dichloroethene	2.568	96	11741	10.463	ug/L #	59
15) Methyl Acetate	2.964	43	2603	1.681	ug/L	90
19) 1,1-Dichloroethane	3.864	63	30139	13.958	ug/L	97
20) cis-1,2-Dichloroethene	4.671	96	6187	4.802	ug/L	95
22) 2-Butanone	4.745	43	10571m	7.311	ug/L	
34) Trichloroethene	6.542	95	101352	74.525	ug/L	97
46) Tetrachloroethene	8.558	164	559755	560.086	ug/L	99

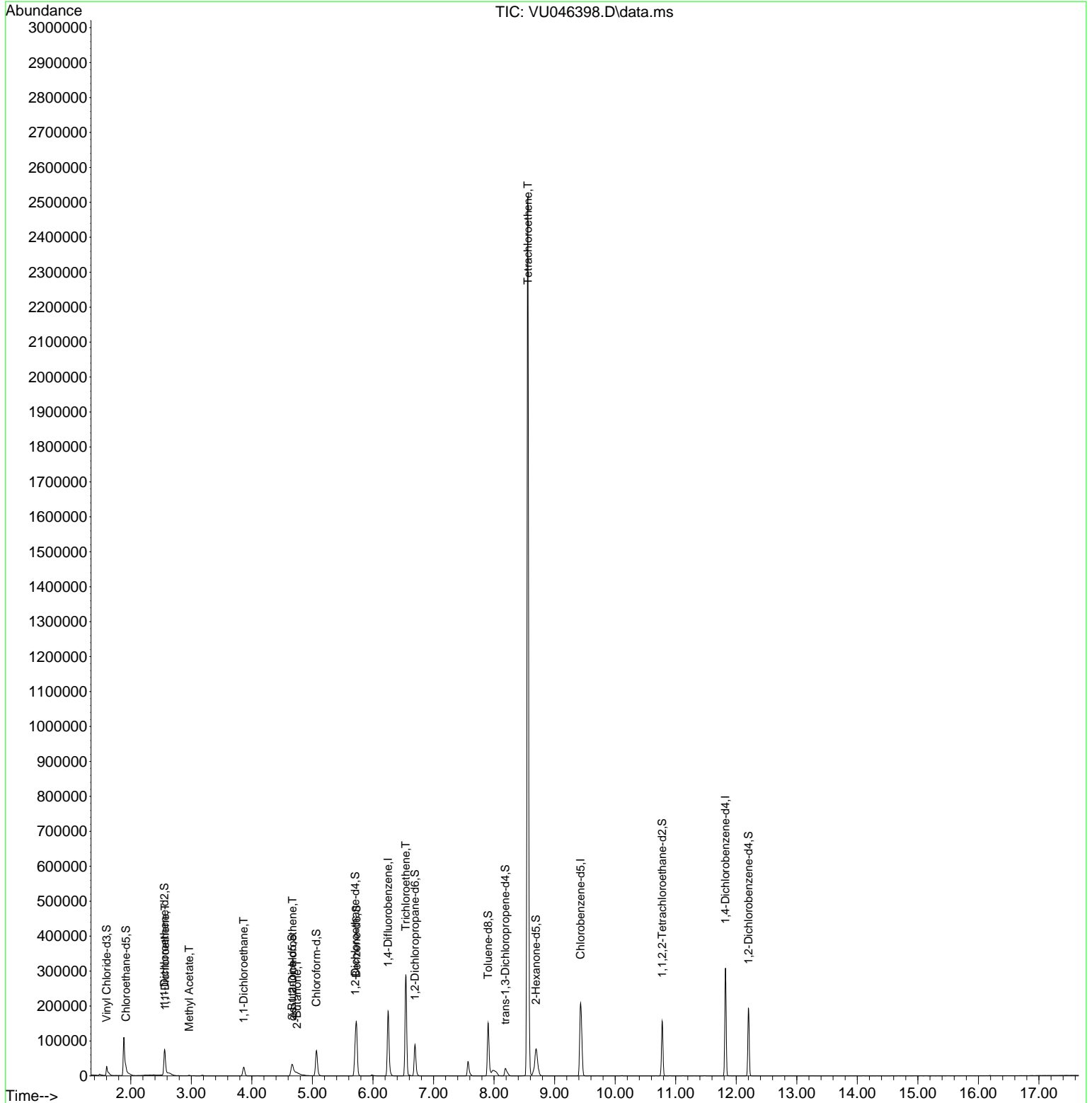
(#) = qualifier out of range (m) = manual integration (+) = signals summed

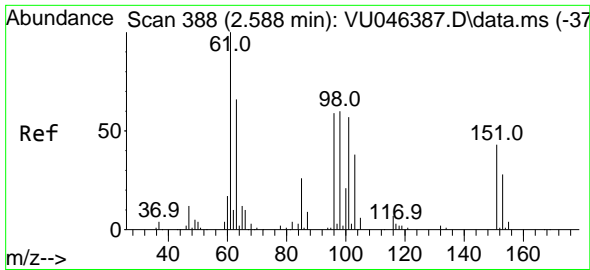
Data Path : Z:\voasrv\HPCHEM1\MSVOA\_U\Data\VU121521\  
 Data File : VU046398.D  
 Acq On : 15 Dec 2021 15:48  
 Operator : SY/MD  
 Sample : M5023-20ME  
 Misc : 6.26g/5.0mL/100uL/5.0mL/MSVOA\_U/MEOH  
 ALS Vial : 13 Sample Multiplier: 1

**Instrument :**  
 MSVOA\_U  
**ClientSampleId :**  
 BGKZ8ME

Quant Time: Dec 16 03:10:48 2021  
 Quant Method : Z:\voasrv\HPCHEM1\MSVOA\_U\Method\SFAMULM112921WMA.M  
 Quant Title : VOC Analysis  
 QLast Update : Thu Dec 16 02:25:11 2021  
 Response via : Initial Calibration

**Manual Integrations**  
**APPROVED**  
 Reviewed By :John Carlone 12/16/2021  
 Supervised By :Mahesh Dadoda 12/18/2021





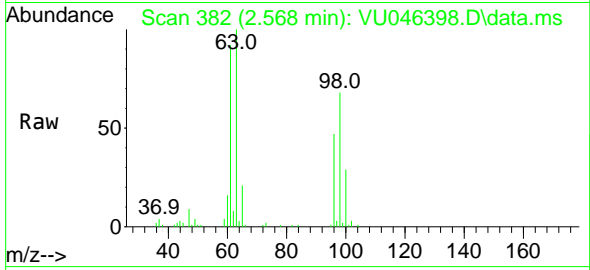
#12  
 1,1-Dichloroethene  
 Concen: 10.463 ug/L  
 RT: 2.568 min Scan# 382  
 Delta R.T. -0.019 min  
 Lab File: VU046398.D  
 Acq: 15 Dec 2021 15:48

Instrument :

MSVOA\_U

Client Sample Id :

BGKZ8ME

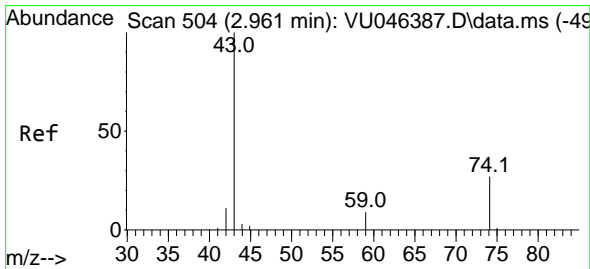
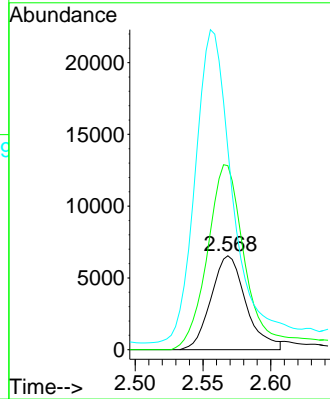
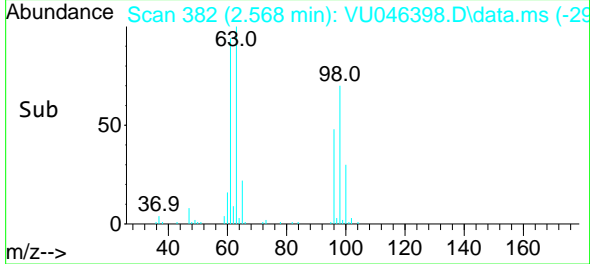


Tgt Ion: 96 Resp: 1174  
 Ion Ratio Lower Upper  
 96 100  
 61 195.9 118.6 220.2  
 63 213.4 93.0 172.8

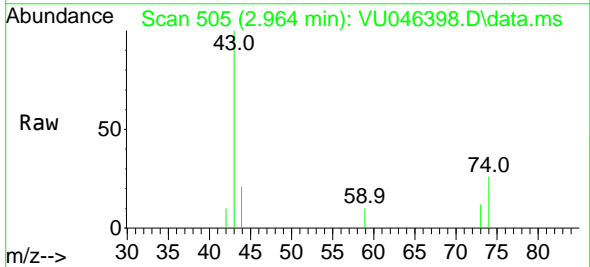
Manual Integrations

APPROVED

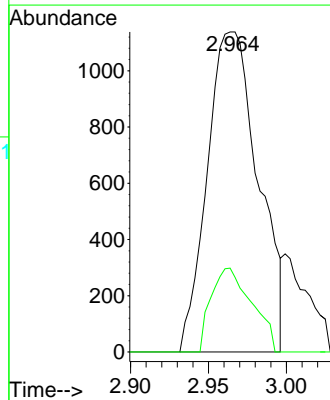
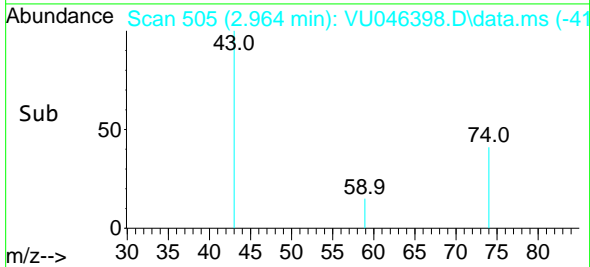
Reviewed By :John Carlone 12/16/2021  
 Supervised By :Mahesh Dadoda 12/18/2021

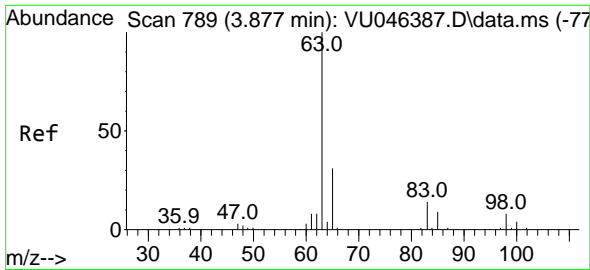


#15  
 Methyl Acetate  
 Concen: 1.681 ug/L  
 RT: 2.964 min Scan# 505  
 Delta R.T. 0.003 min  
 Lab File: VU046398.D  
 Acq: 15 Dec 2021 15:48



Tgt Ion: 43 Resp: 2603  
 Ion Ratio Lower Upper  
 43 100  
 74 20.9 20.8 31.2





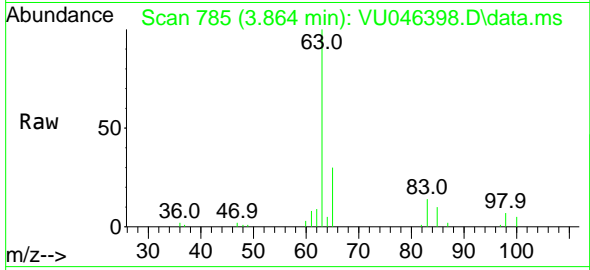
#19  
 1,1-Dichloroethane  
 Concen: 13.958 ug/L  
 RT: 3.864 min Scan# 785  
 Delta R.T. -0.013 min  
 Lab File: VU046398.D  
 Acq: 15 Dec 2021 15:48

Instrument :

MSVOA\_U

Client Sample Id :

BGKZ8ME

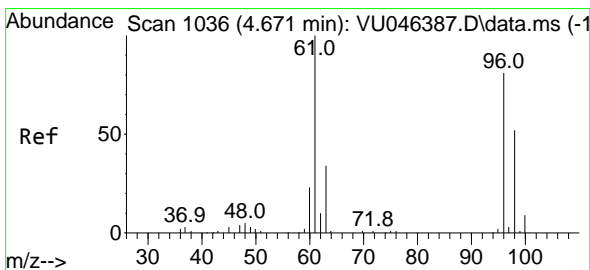
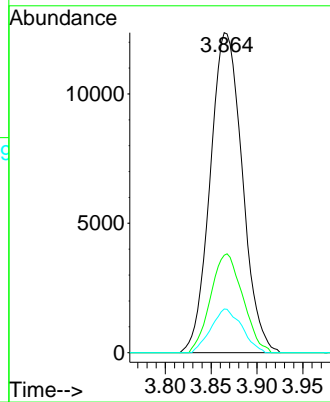
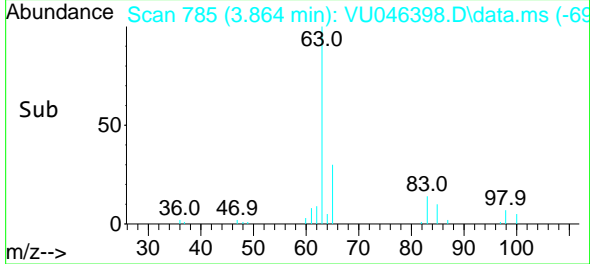


Tgt Ion: 63 Resp: 30139  
 Ion Ratio Lower Upper  
 63 100  
 65 30.4 22.8 42.4  
 83 13.7 9.6 17.8

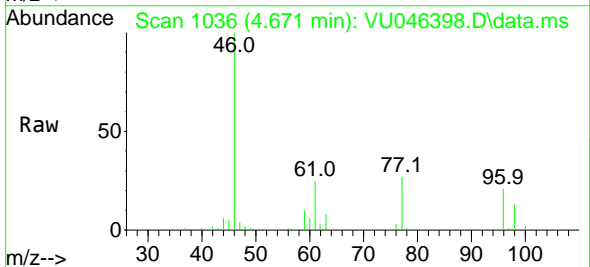
Manual Integrations

APPROVED

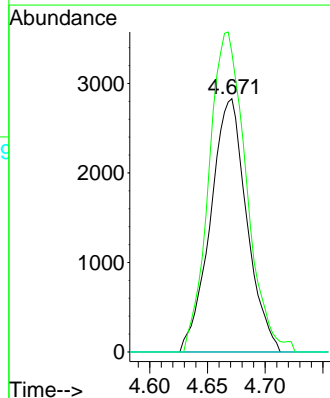
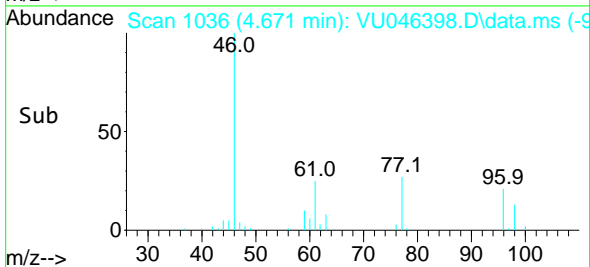
Reviewed By :John Carlone 12/16/2021  
 Supervised By :Mahesh Dadoda 12/18/2021

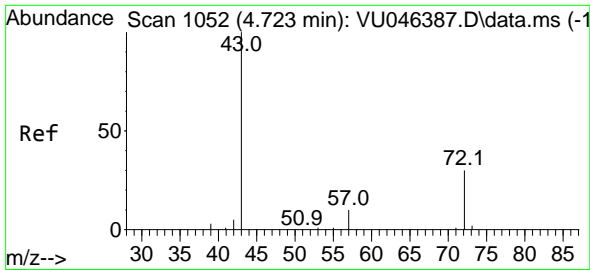


#20  
 cis-1,2-Dichloroethene  
 Concen: 4.802 ug/L  
 RT: 4.671 min Scan# 1036  
 Delta R.T. -0.000 min  
 Lab File: VU046398.D  
 Acq: 15 Dec 2021 15:48



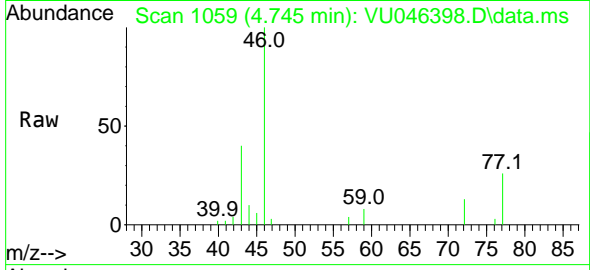
Tgt Ion: 96 Resp: 6187  
 Ion Ratio Lower Upper  
 96 100  
 61 118.2 86.8 161.2  
 68 0.0 0.0 0.0





#22  
 2-Butanone  
 Concen: 7.311 ug/L m  
 RT: 4.745 min Scan# 1059  
 Delta R.T. 0.022 min  
 Lab File: VU046398.D  
 Acq: 15 Dec 2021 15:48

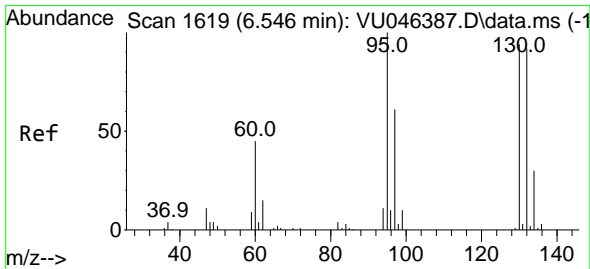
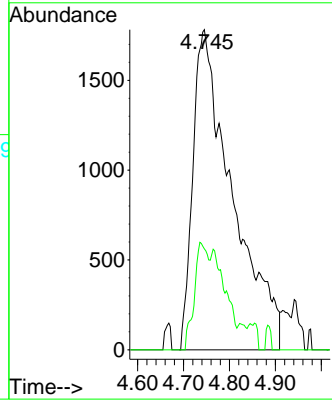
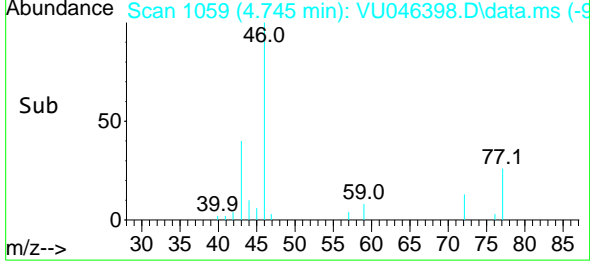
Instrument : MSVOA\_U  
 Client Sample Id : BGKZ8ME



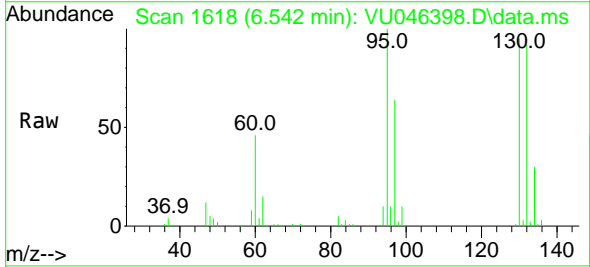
Tgt Ion: 43 Resp: 1057  
 Ion Ratio Lower Upper  
 43 100  
 72 12.4 14.5 43.6

Manual Integrations  
**APPROVED**

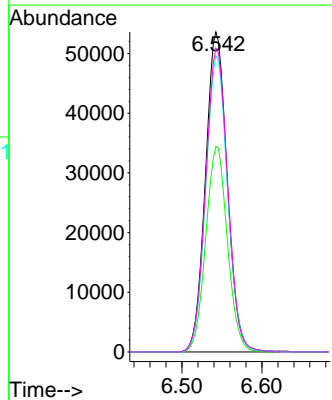
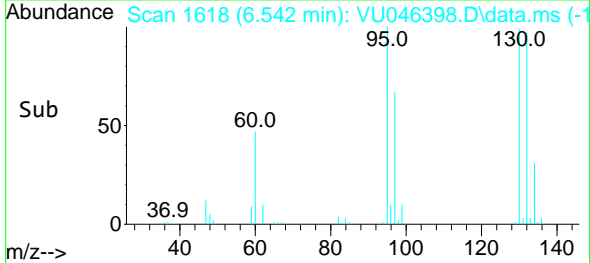
Reviewed By : John Carlone 12/16/2021  
 Supervised By : Mahesh Dadoda 12/18/2021

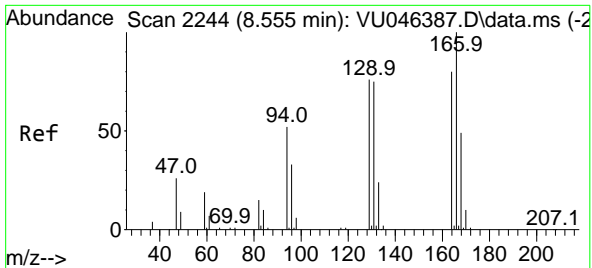


#34  
 Trichloroethene  
 Concen: 74.525 ug/L  
 RT: 6.542 min Scan# 1618  
 Delta R.T. -0.003 min  
 Lab File: VU046398.D  
 Acq: 15 Dec 2021 15:48



Tgt Ion: 95 Resp: 101352  
 Ion Ratio Lower Upper  
 95 100  
 97 64.2 44.1 81.9  
 132 92.5 66.8 124.0  
 130 95.0 69.0 128.1





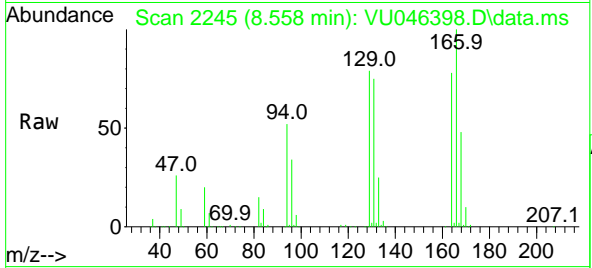
#46  
 Tetrachloroethene  
 Concen: 560.086 ug/L  
 RT: 8.558 min Scan# 21  
 Delta R.T. 0.003 min  
 Lab File: VU046398.D  
 Acq: 15 Dec 2021 15:48

Instrument :

MSVOA\_U

ClientSampleId :

BGKZ8ME



Tgt Ion:164 Resp: 55975

Ion	Ratio	Lower	Upper
164	100		
129	100.4	71.1	132.1
131	95.9	67.8	126.0
166	127.5	90.6	168.2

Manual Integrations

APPROVED

Reviewed By :John Carlone 12/16/2021  
 Supervised By :Mahesh Dadoda 12/18/2021

