

Data Path : Z:\voasrv\HPCHEM1\MSVOA_U\Data\VU121523\
 Data File : VU056896.D
 Acq On : 15 Dec 2023 22:27
 Operator : MD/SY
 Sample : 05809-03
 Misc : 25.0mL/MSVOA_U/WATER
 ALS Vial : 32 Sample Multiplier: 1

Instrument :
 MSVOA_U
 ClientSampleId :
 F7C02

Quant Time: Dec 16 00:07:28 2023
 Quant Method : Z:\voasrv\HPCHEM1\MSVOA_U\Method\SFAMUTR121123WMA.M
 Quant Title : TRACE VOA SFAM1.0
 QLast Update : Fri Dec 15 01:53:53 2023
 Response via : Initial Calibration

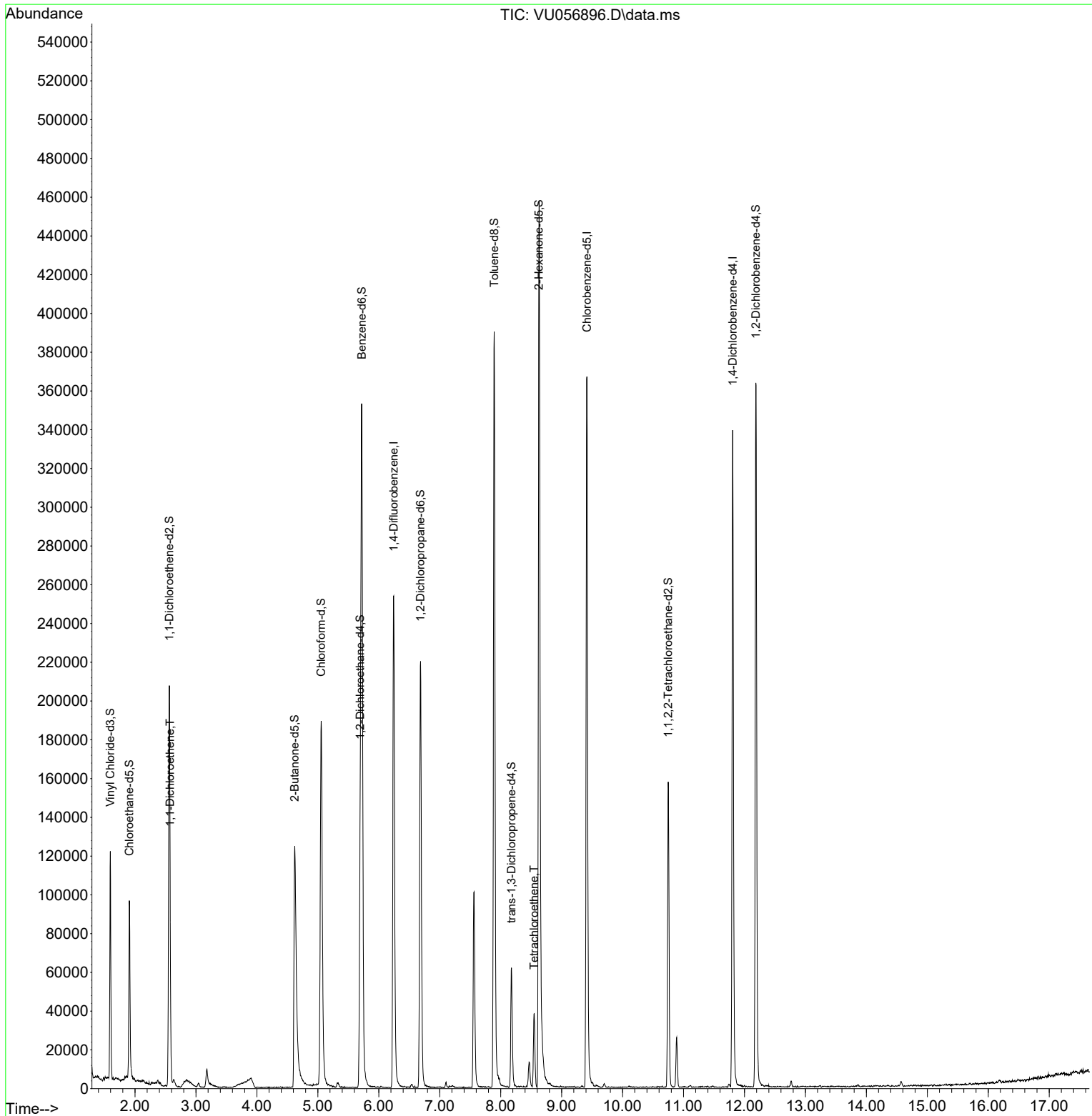
Compound	R.T.	QIon	Response	Conc	Units	Dev(Min)
Internal Standards						
1) 1,4-Difluorobenzene	6.245	114	208474	5.000	ug/L	0.00
28) Chlorobenzene-d5	9.415	117	219413	5.000	ug/L	0.00
58) 1,4-Dichlorobenzene-d4	11.807	152	91354	5.000	ug/L	0.00
System Monitoring Compounds						
4) Vinyl Chloride-d3	1.596	65	82412	4.612	ug/L	0.00
Spiked Amount	5.000	Range 40 - 130	Recovery	=	92.200%	
7) Chloroethane-d5	1.907	69	67225	5.027	ug/L	0.00
Spiked Amount	5.000	Range 65 - 130	Recovery	=	100.600%	
11) 1,1-Dichloroethene-d2	2.563	65	36787	4.812	ug/L	0.00
Spiked Amount	5.000	Range 60 - 125	Recovery	=	96.200%	
20) 2-Butanone-d5	4.621	46	202482	57.377	ug/L	0.00
Spiked Amount	50.000	Range 40 - 130	Recovery	=	114.760%	
24) Chloroform-d	5.055	84	178542	5.276	ug/L	0.00
Spiked Amount	5.000	Range 70 - 125	Recovery	=	105.600%	
26) 1,2-Dichloroethane-d4	5.695	65	88015	5.497	ug/L	0.00
Spiked Amount	5.000	Range 70 - 130	Recovery	=	110.000%	
32) Benzene-d6	5.721	84	339572	4.990	ug/L	0.00
Spiked Amount	5.000	Range 70 - 125	Recovery	=	99.800%	
36) 1,2-Dichloropropane-d6	6.682	67	109661	5.148	ug/L	0.00
Spiked Amount	5.000	Range 60 - 140	Recovery	=	103.000%	
41) Toluene-d8	7.894	98	271290	4.460	ug/L	0.00
Spiked Amount	5.000	Range 70 - 130	Recovery	=	89.200%	
43) trans-1,3-Dichloroprop...	8.177	79	39055	4.728	ug/L	0.00
Spiked Amount	5.000	Range 55 - 130	Recovery	=	94.600%	
46) 2-Hexanone-d5	8.627	63	158224	50.785	ug/L	0.00
Spiked Amount	50.000	Range 45 - 130	Recovery	=	101.560%	
56) 1,1,2,2-Tetrachloroeth...	10.750	84	80677	5.235	ug/L	0.00
Spiked Amount	5.000	Range 65 - 120	Recovery	=	104.600%	
66) 1,2-Dichlorobenzene-d4	12.187	152	97218	5.414	ug/L	0.00
Spiked Amount	5.000	Range 80 - 120	Recovery	=	108.200%	
Target Compounds						
12) 1,1-Dichloroethene	2.576	96	11037	0.652	ug/L #	1
47) Tetrachloroethene	8.547	164	8485	0.573	ug/L	95

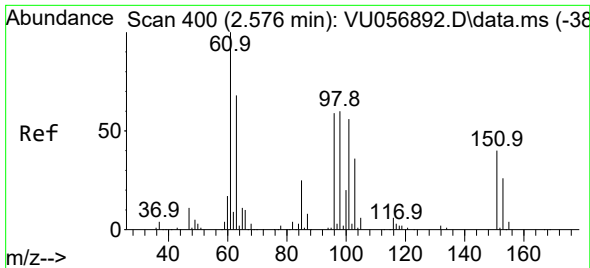
(#) = qualifier out of range (m) = manual integration (+) = signals summed

Data Path : Z:\voasrv\HPCHEM1\MSVOA_U\Data\VU121523\
 Data File : VU056896.D
 Acq On : 15 Dec 2023 22:27
 Operator : MD/SY
 Sample : 05809-03
 Misc : 25.0mL/MSVOA_U/WATER
 ALS Vial : 32 Sample Multiplier: 1

Instrument :
 MSVOA_U
 ClientSampleId :
 F7C02

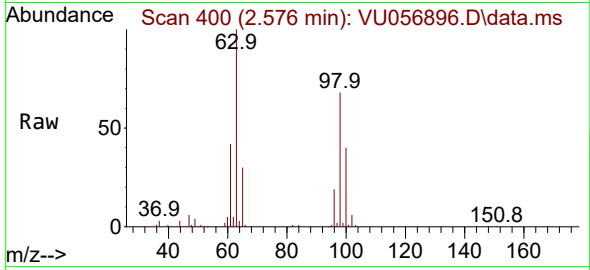
Quant Time: Dec 16 00:07:28 2023
 Quant Method : Z:\voasrv\HPCHEM1\MSVOA_U\Method\SFAMUTR121123WMA.M
 Quant Title : TRACE VOA SFAM1.0
 QLast Update : Fri Dec 15 01:53:53 2023
 Response via : Initial Calibration



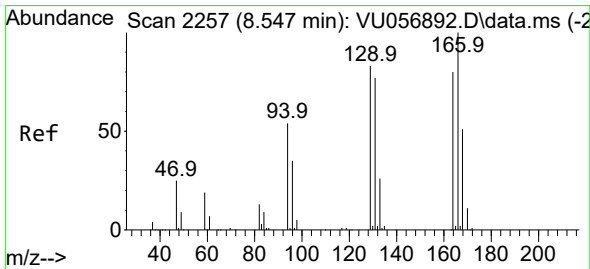
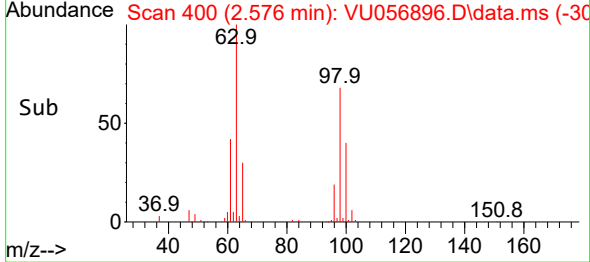
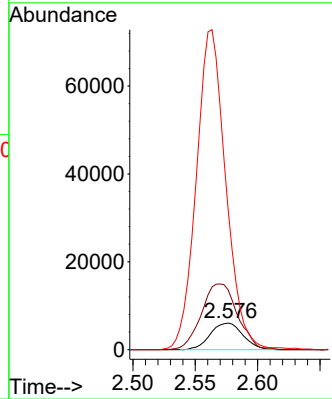


#12
 1,1-Dichloroethene
 Concen: 0.652 ug/L
 RT: 2.576 min Scan# 400
 Delta R.T. -0.000 min
 Lab File: VU056896.D
 Acq: 15 Dec 2023 22:27

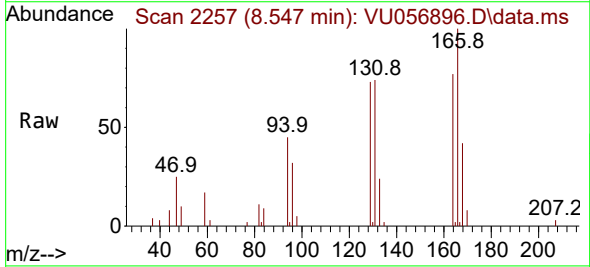
Instrument : MSVOA_U
 ClientSampleId : F7C02



Tgt Ion: 96 Resp: 11037
 Ion Ratio Lower Upper
 96 100
 61 226.2 119.0 221.0#
 63 532.2 88.7 164.7#



#47
 Tetrachloroethene
 Concen: 0.573 ug/L
 RT: 8.547 min Scan# 2257
 Delta R.T. -0.003 min
 Lab File: VU056896.D
 Acq: 15 Dec 2023 22:27



Tgt Ion: 164 Resp: 8485
 Ion Ratio Lower Upper
 164 100
 129 95.1 73.4 136.4
 131 96.7 71.5 132.9
 166 130.7 92.7 172.1

