

Data Path : Z:\VOASRV\HPCHEM1\MSVOA U\DATA\VU121619\
 Data File : VU036232.D
 Acq On : 16 Dec 2019 14:29
 Operator : JC/MD
 Sample : VIBLK20
 Misc : 25.0mL/MSVOA U/WATER
 ALS Vial : 10 Sample Multiplier: 1

Instrument :
 MSVOA_U
 ClientSampled :
 VIBLK20

Integration Parameters: rteint.p
 Integrator: RTE
 Smoothing : ON
 Sampling : 1
 Start Thrs: 0.1
 Stop Thrs : 0

Filtering: 5
 Min Area: 3 % of largest Peak
 Max Peaks: 100
 Peak Location: TOP

If leading or trailing edge < 100 prefer < Baseline drop else tangent >
 Peak separation: 5

Method : Z:\VOASRV\HPCHEM1\MSVOA_U\METHOD\SOMUTR121319WMA.M
 Title : TRACE VOA SOM01.0

Signal : TIC

peak #	R.T. min	first scan	max scan	last scan	PK TY	peak height	corr. area	corr. % max.	% of total
1	1.610	74	84	94	rBV2	139588	182616	22.61%	2.612%
2	1.932	176	184	197	rBV	118585	153071	18.96%	2.190%
3	2.591	378	389	406	rVB	159398	257981	31.95%	3.691%
4	2.681	406	417	433	rBV2	10297	25975	3.22%	0.372%
5	3.086	532	543	555	rVB4	8167	15994	1.98%	0.229%
6	4.697	1028	1044	1064	rBV	100950	307349	38.06%	4.397%
7	5.112	1156	1173	1196	rBV	163651	364964	45.20%	5.221%
8	5.768	1354	1377	1406	rBV2	304348	793581	98.27%	11.353%
9	6.288	1525	1539	1562	rBV	294529	566697	70.18%	8.107%
10	6.732	1661	1677	1697	rBV2	199178	391694	48.51%	5.603%
11	7.603	1931	1948	1967	rBV	88139	166183	20.58%	2.377%
12	7.838	2011	2021	2029	rBV4	5401	9837	1.22%	0.141%
13	7.931	2037	2050	2068	rBV	327732	580963	71.94%	8.311%
14	8.214	2124	2138	2162	rBV2	57839	109308	13.54%	1.564%
15	8.584	2243	2253	2263	rBV5	15098	26037	3.22%	0.372%
16	8.677	2267	2282	2314	rBV	358604	807527	100.00%	11.552%
17	9.449	2507	2522	2555	rBV	442872	790882	97.94%	11.314%
18	10.140	2727	2737	2750	rVB5	8398	14530	1.80%	0.208%
19	10.783	2924	2937	2954	rBV	173157	285292	35.33%	4.081%
20	10.915	2969	2978	2988	rVB4	6501	10490	1.30%	0.150%
21	11.835	3250	3264	3278	rBV	350890	592821	73.41%	8.481%
22	12.217	3370	3383	3398	rBV	316576	536442	66.43%	7.674%

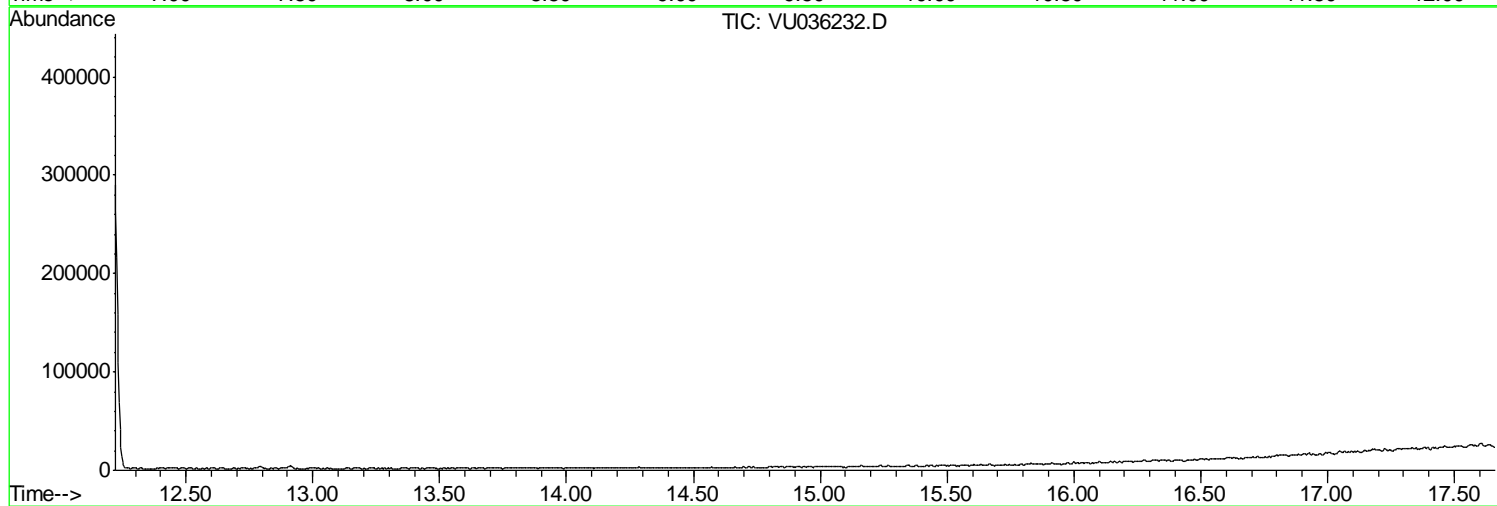
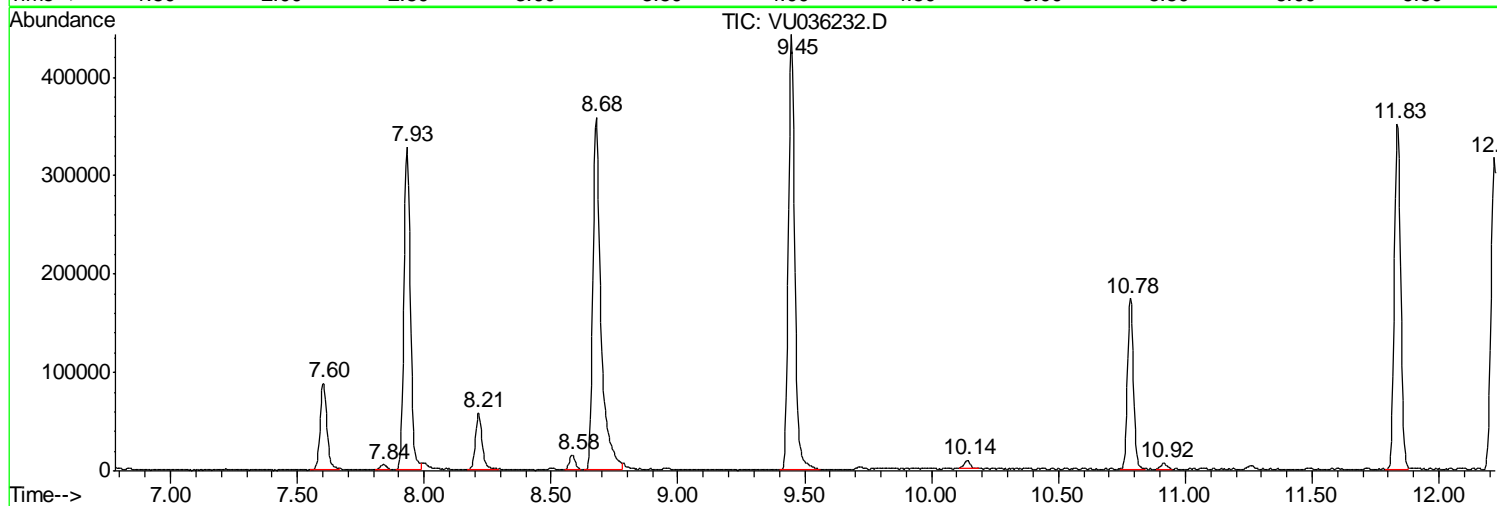
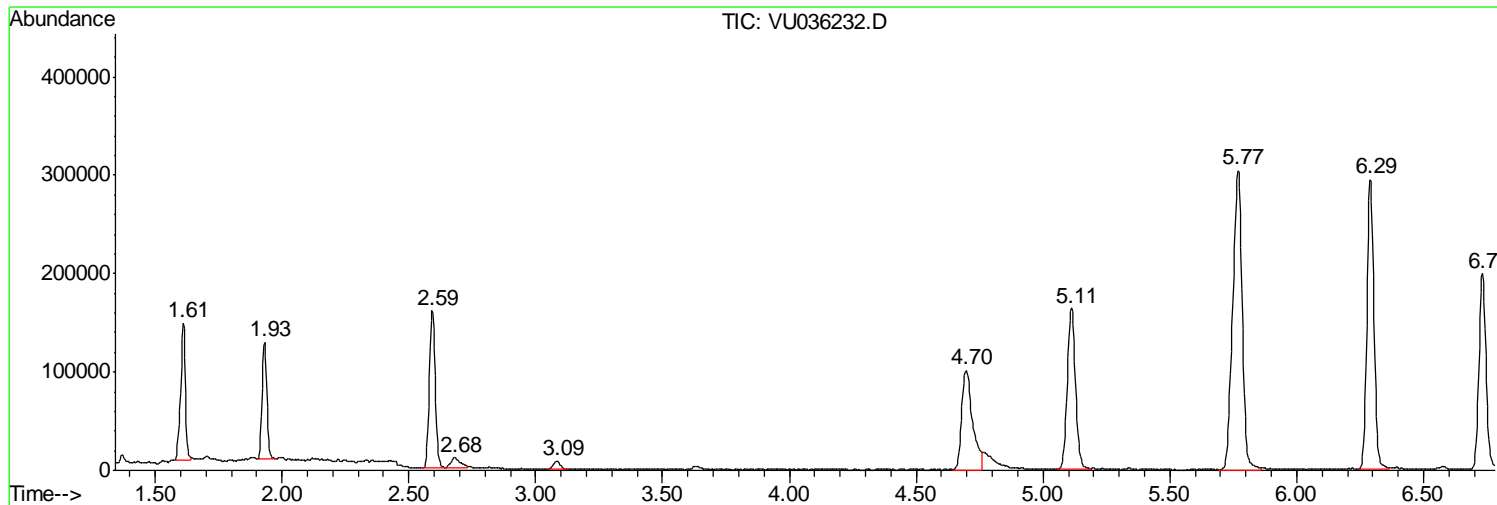
Sum of corrected areas: 6990234

Data Path : Z:\VOASRV\HPCHEM1\MSVOA U\DATA\VU121619\
Data File : VU036232.D
Acq On : 16 Dec 2019 14:29
Operator : JC/MD
Sample : VIBLK20
Misc : 25.0mL/MSVOA U/WATER
ALS Vial : 10 Sample Multiplier: 1

Instrument :
MSVOA_U
ClientSampled :
VIBLK20

Quant Method : Z:\VOASRV\HPCHEM1\MSVOA_U\METHOD\SOMUTR121319WMA.M
Quant Title : TRACE VOA SOM01.0

TIC Library : C:\DATABASE\NIST11.L
TIC Integration Parameters: LSCINT.P



Data Path : Z:\VOASRV\HPCHEM1\MSVOA_U\DATA\VU121619\
Data File : VU036232.D
Acq On : 16 Dec 2019 14:29
Operator : JC/MD
Sample : VIBLK20
Misc : 25.0mL/MSVOA_U/WATER
ALS Vial : 10 Sample Multiplier: 1

Instrument :
MSVOA_U
ClientSampleId :
VIBLK20

Quant Method : Z:\VOASRV\HPCHEM1\MSVOA_U\METHOD\SOMUTR121319WMA.M
Quant Title : TRACE VOA SOM01.0

TIC Library : C:\DATABASE\NIST11.L
TIC Integration Parameters: LSCINT.P

No Library Search Compounds Detected

Data Path : Z:\VOASRV\HPCHEM1\MSVOA_U\DATA\VU121619\
Data File : VU036232.D
Acq On : 16 Dec 2019 14:29
Operator : JC/MD
Sample : VIBLK20
Misc : 25.0mL/MSVOA_U/WATER
ALS Vial : 10 Sample Multiplier: 1

Instrument :
MSVOA_U
ClientSampleId :
VIBLK20

Quant Method : Z:\VOASRV\HPCHEM1\MSVOA_U\METHOD\SOMUTR121319WMA.M
Quant Title : TRACE VOA SOM01.0

TIC Library : C:\DATABASE\NIST11.L
TIC Integration Parameters: LSCINT.P

TIC Top Hit name	RT	EstConc	Units	Response	--Internal Standard--			
					#	RT	Resp	Conc
