

Data Path : Z:\VOASRV\HPCHEM1\MSVOA U\DATA\VU121718\
 Data File : VU028743.D
 Acq On : 18 Dec 2018 01:10
 Operator : MD/SY
 Sample : J6413-03
 Misc : 5.0mL/MSVOA U/WATER
 ALS Vial : 38 Sample Multiplier: 1

Instrument :
 MSVOA_U
 ClientSampleId :

Quant Time: Dec 18 07:38:17 2018
 Quant Method : Z:\VOASRV\HPCHEM1\MSVOA_U\METHOD\82U120618W.M
 Quant Title : SW846 8260
 QLast Update : Fri Dec 07 00:39:42 2018
 Response via : Initial Calibration

Internal Standards	R.T.	QIon	Response	Conc	Units	Dev(Min)
1) Pentafluorobenzene	4.98	168	81857	50.00	ug/l	0.00
34) 1,4-Difluorobenzene	5.88	114	145438	50.00	ug/l	0.00
63) Chlorobenzene-d5	9.09	117	131030	50.00	ug/l	0.00
72) 1,4-Dichlorobenzene-d4	11.48	152	51268	50.00	ug/l	0.00

System Monitoring Compounds

33) 1,2-Dichloroethane-d4	5.31	65	67852	54.32	ug/l	0.00
Spiked Amount	50.000		Recovery	= 108.64%		
35) Dibromofluoromethane	4.88	113	49489	54.07	ug/l	0.00
Spiked Amount	50.000		Recovery	= 108.14%		
50) Toluene-d8	7.57	98	188232	51.99	ug/l	0.00
Spiked Amount	50.000		Recovery	= 103.98%		
62) 4-Bromofluorobenzene	10.30	95	62775	46.39	ug/l	0.00
Spiked Amount	50.000		Recovery	= 92.78%		

Target Compounds

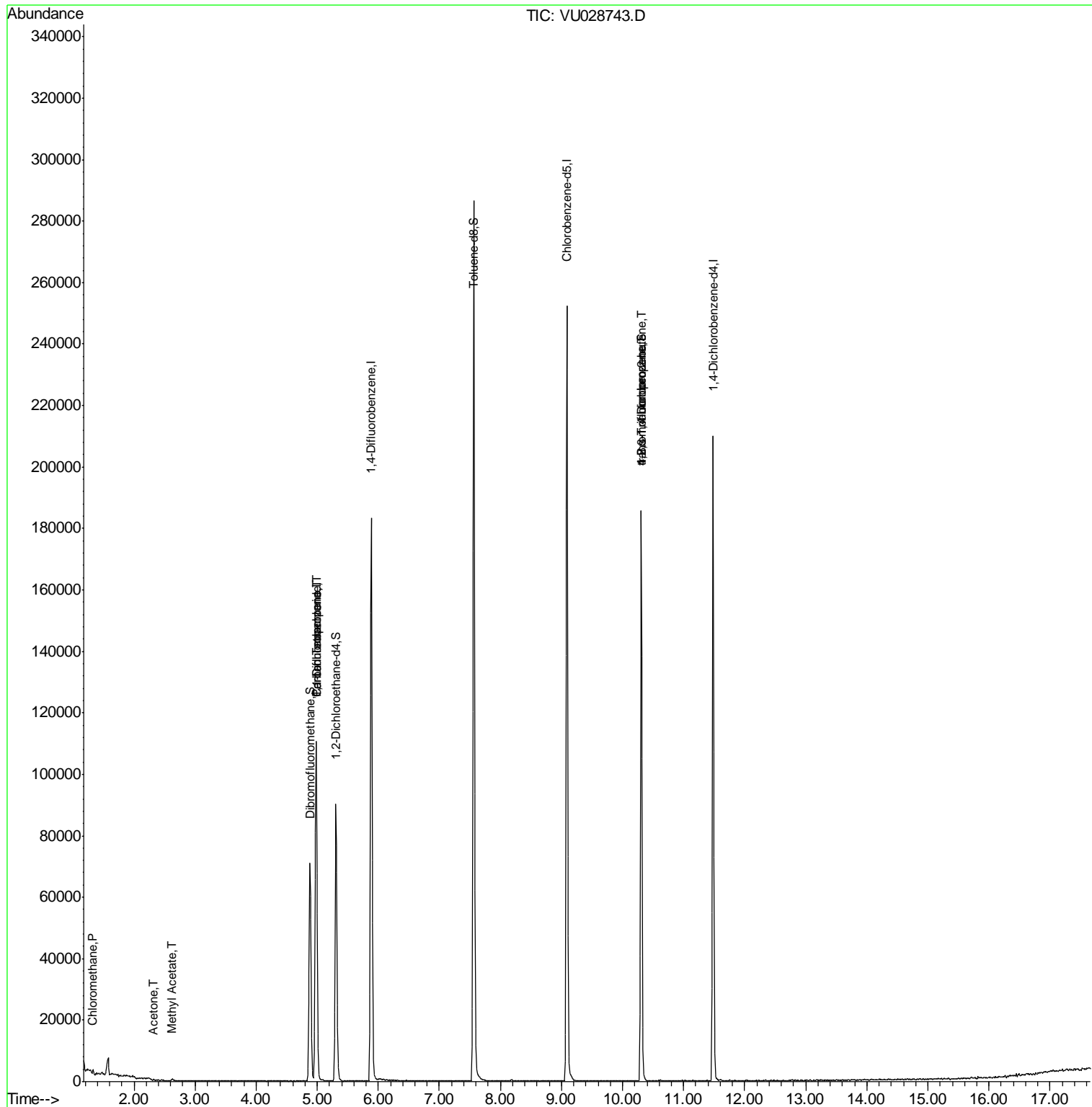
	R.T.	QIon	Response	Conc	Units	Qvalue
3) Chloromethane	1.33	50	864	0.428	ug/l	98
16) Acetone	2.32	43	374	0.459	ug/l #	44
18) Methyl Acetate	2.62	43	1044	0.494	ug/l #	90
31) Cyclohexane	4.98	56	2016	Below Cal	#	1
36) 1,1-Dichloropropene	4.98	75	7418	4.661	ug/l #	49
38) Carbon Tetrachloride	4.98	117	7531	5.871	ug/l #	14
76) 1,2,3-Trichloropropane	10.30	75	32335	24.699	ug/l #	35
81) trans-1,4-Dichloro-2-buten	10.30	75	32335	60.616	ug/l #	100

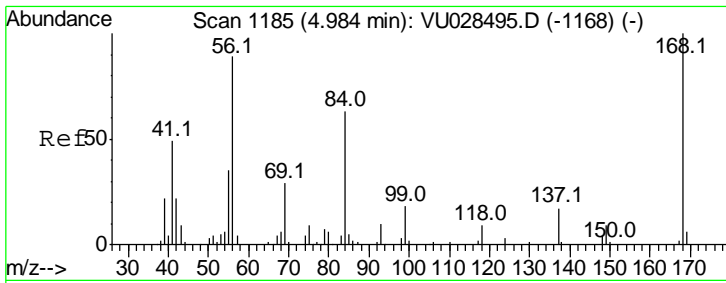
(#) = qualifier out of range (m) = manual integration (+) = signals summed

Data Path : Z:\VOASRV\HPCHEM1\MSVOA U\DATA\VU121718\
 Data File : VU028743.D
 Acq On : 18 Dec 2018 01:10
 Operator : MD/SY
 Sample : J6413-03
 Misc : 5.0mL/MSVOA U/WATER
 ALS Vial : 38 Sample Multiplier: 1

Instrument :
 MSVOA_U
 ClientSampled :

Quant Time: Dec 18 07:38:17 2018
 Quant Method : Z:\VOASRV\HPCHEM1\MSVOA_U\METHOD\82U120618W.M
 Quant Title : SW846 8260
 QLast Update : Fri Dec 07 00:39:42 2018
 Response via : Initial Calibration

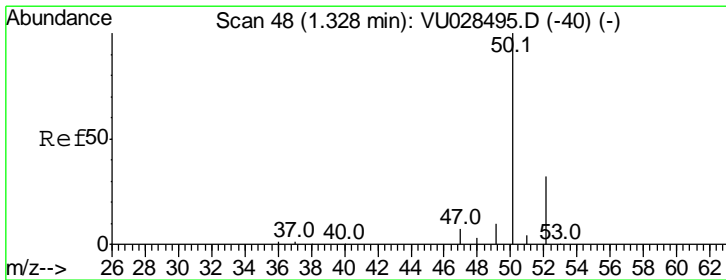
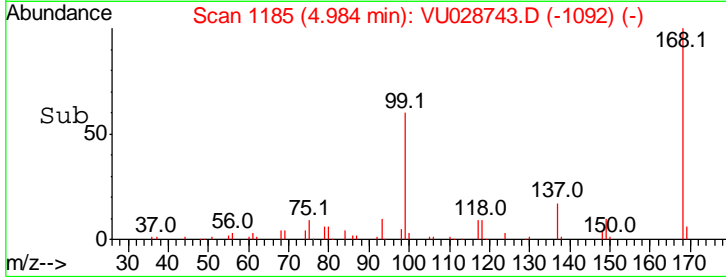
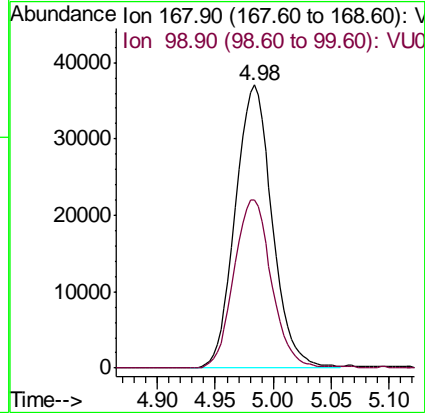
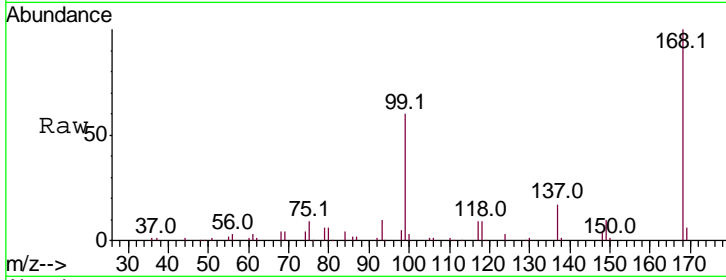




#1
 Pentafluorobenzene
 Concen: 50.000 ug/l
 RT: 4.98 min Scan# 1185
 Delta R.T. -0.00 min
 Lab File: VU028743.D
 Acq: 18 Dec 2018 01:10

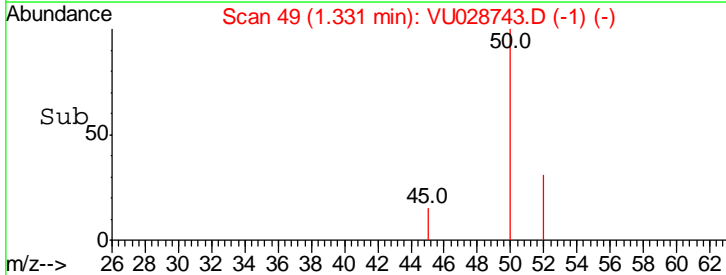
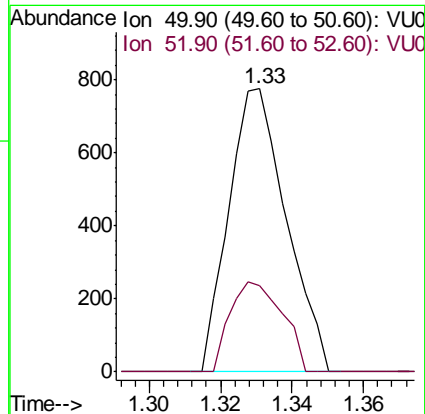
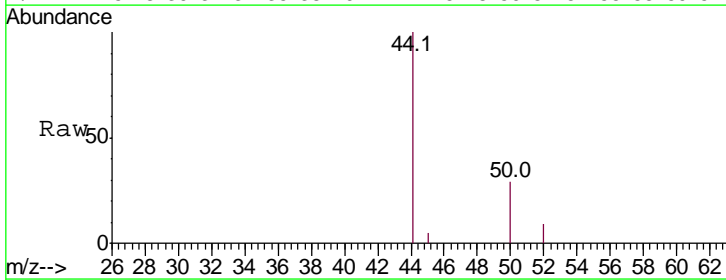
Instrument :
 MSVOA_U
 ClientSampled :

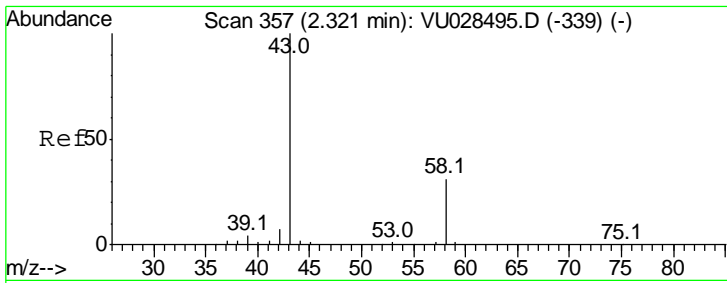
Tgt Ion: 168 Resp: 81857
 Ion Ratio Lower Upper
 168 100
 99 59.5 46.6 69.8



#3
 Chloromethane
 Concen: 0.428 ug/l
 RT: 1.33 min Scan# 49
 Delta R.T. 0.00 min
 Lab File: VU028743.D
 Acq: 18 Dec 2018 01:10

Tgt Ion: 50 Resp: 864
 Ion Ratio Lower Upper
 50 100
 52 30.6 25.5 38.3

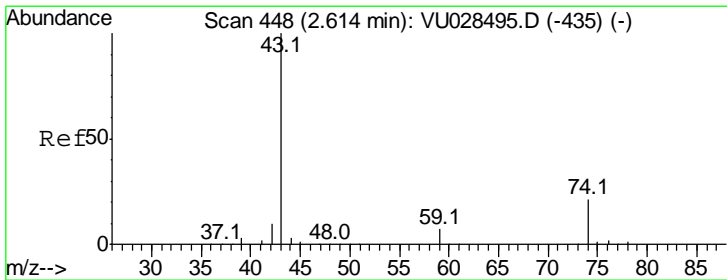
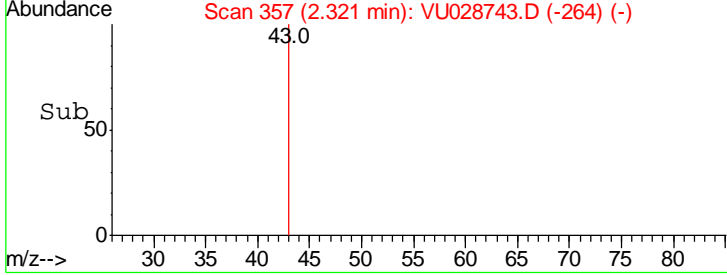
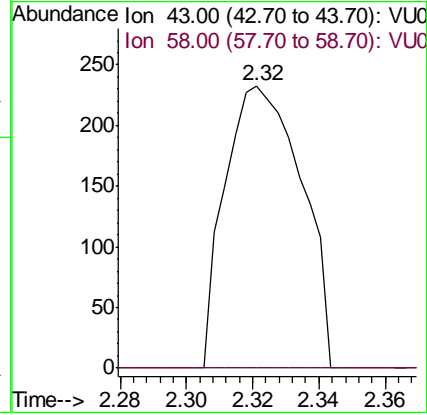
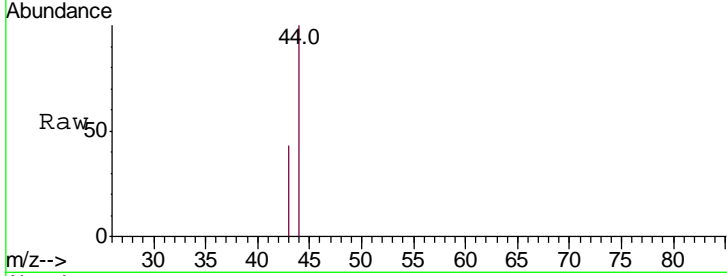




#16
 Acetone
 Concen: 0.459 ug/l
 RT: 2.32 min Scan# 357
 Delta R.T. -0.00 min
 Lab File: VU028743.D
 Acq: 18 Dec 2018 01:10

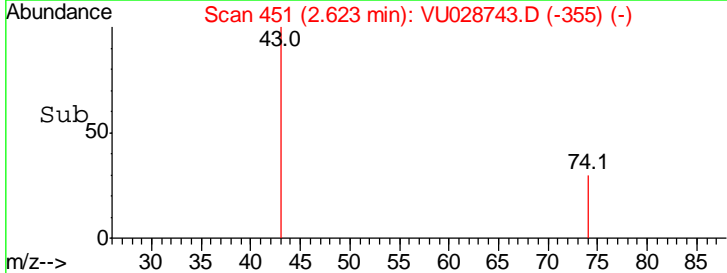
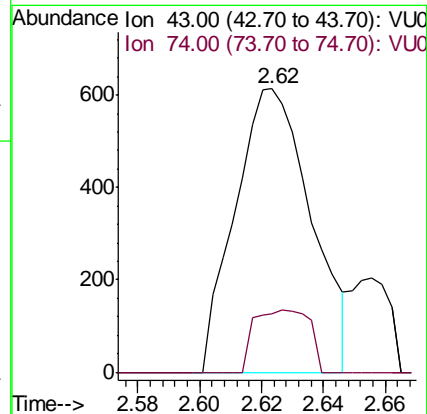
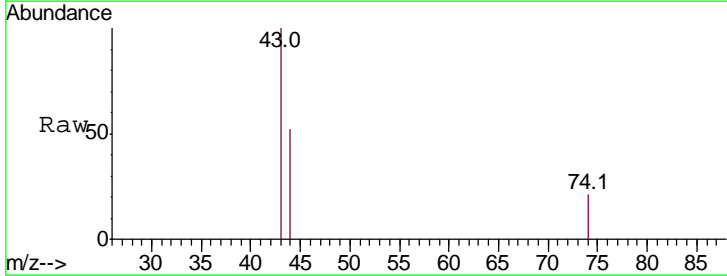
Instrument :
 MSVOA_U
 ClientSampled :

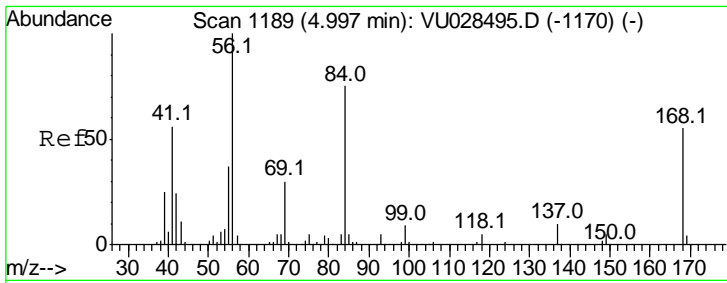
Tgt Ion	Ratio	Lower	Upper
43	100		
58	0.0	24.6	37.0#



#18
 Methyl Acetate
 Concen: 0.494 ug/l
 RT: 2.62 min Scan# 451
 Delta R.T. 0.01 min
 Lab File: VU028743.D
 Acq: 18 Dec 2018 01:10

Tgt Ion	Ratio	Lower	Upper
43	100		
74	16.1	16.4	24.6#

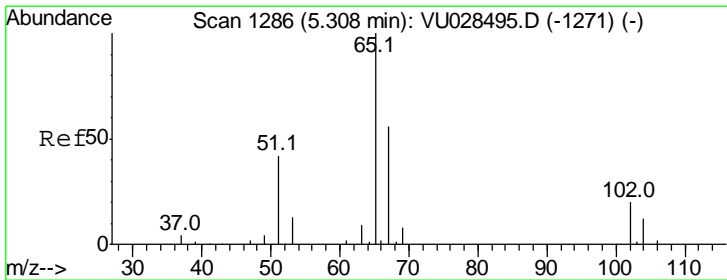
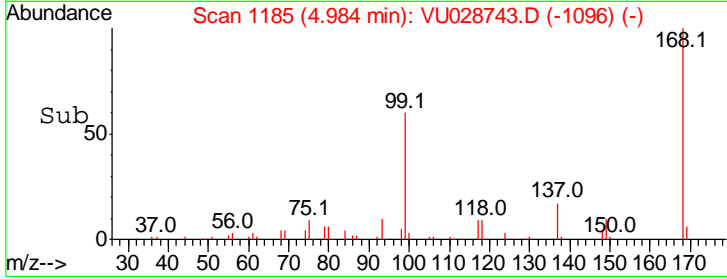
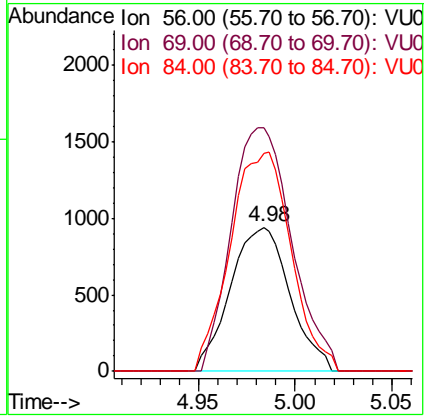
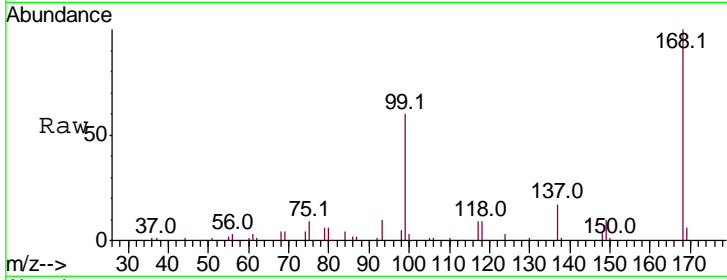




#31
 Cyclohexane
 Concen: Below Cal
 RT: 4.98 min Scan# 1185
 Delta R.T. -0.01 min
 Lab File: VU028743.D
 Acq: 18 Dec 2018 01:10

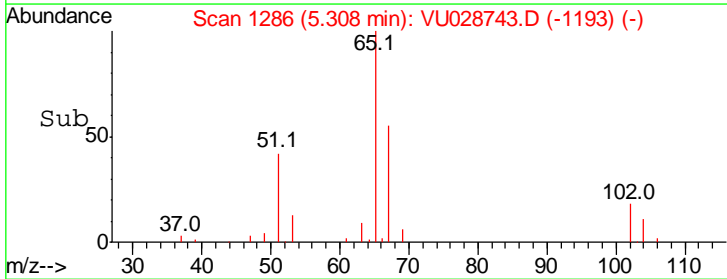
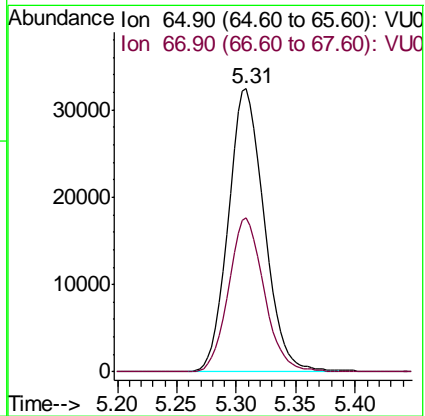
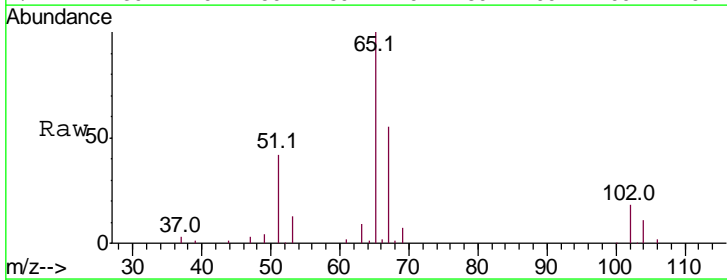
Instrument :
 MSVOA_U
 ClientSampled :

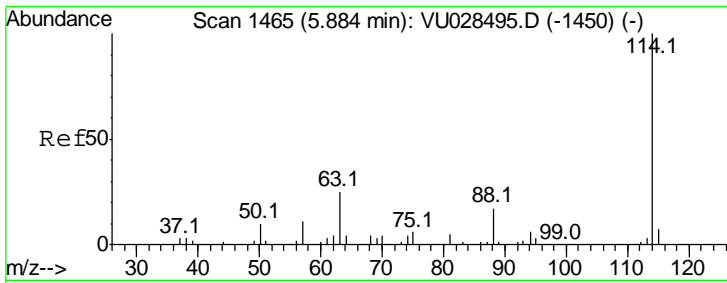
Tgt Ion	Resp	Lower	Upper
56	100		
69	168.4	24.0	36.0#
84	150.7	59.7	89.5#



#33
 1,2-Dichloroethane-d4
 Concen: 54.317 ug/l
 RT: 5.31 min Scan# 1286
 Delta R.T. -0.00 min
 Lab File: VU028743.D
 Acq: 18 Dec 2018 01:10

Tgt Ion	Resp	Lower	Upper
65	100		
67	53.7	0.0	110.6

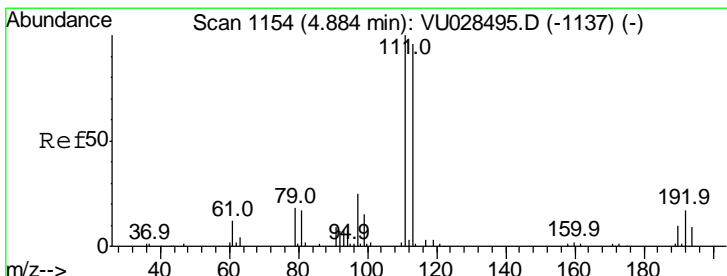
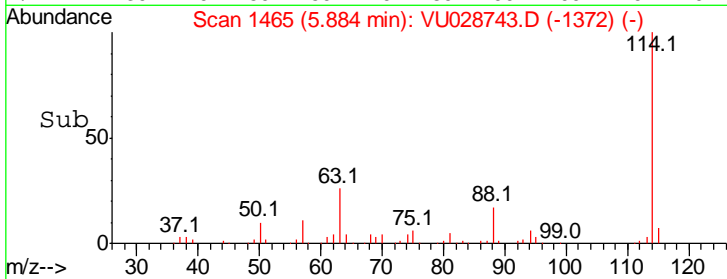
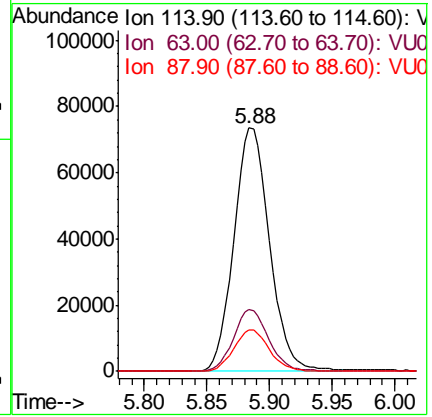
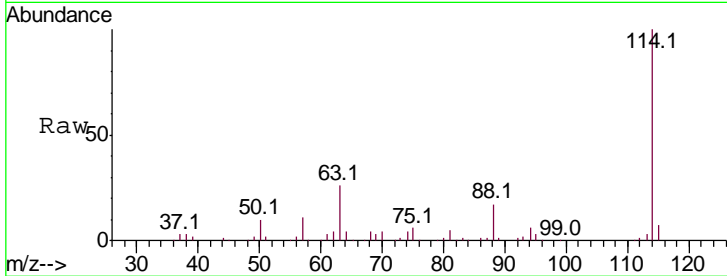




#34
 1,4-Difluorobenzene
 Concen: 50.000 ug/l
 RT: 5.88 min Scan# 1465
 Delta R.T. -0.00 min
 Lab File: VU028743.D
 Acq: 18 Dec 2018 01:10

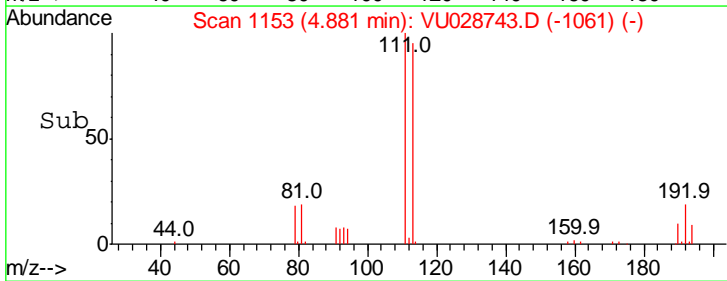
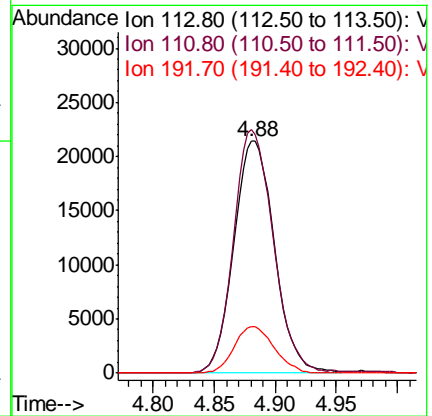
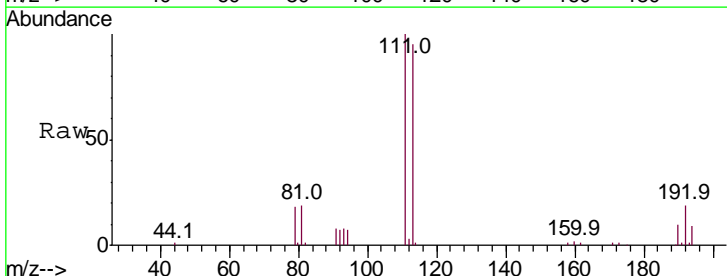
Instrument :
 MSVOA_U
 ClientSampled :

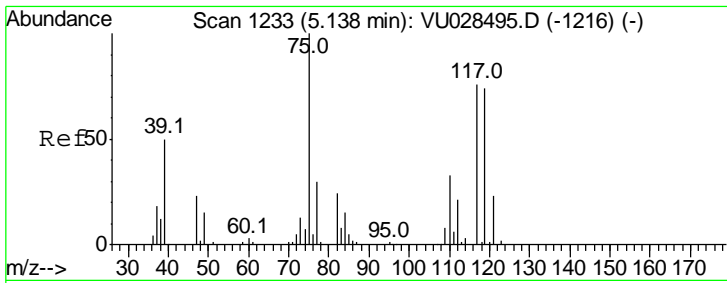
Tgt Ion	Resp	Lower	Upper
114	100		
63	25.5	0.0	49.2
88	16.9	0.0	33.4



#35
 Dibromofluoromethane
 Concen: 54.071 ug/l
 RT: 4.88 min Scan# 1153
 Delta R.T. -0.00 min
 Lab File: VU028743.D
 Acq: 18 Dec 2018 01:10

Tgt Ion	Resp	Lower	Upper
113	100		
111	102.9	83.4	125.0
192	19.7	14.8	22.2

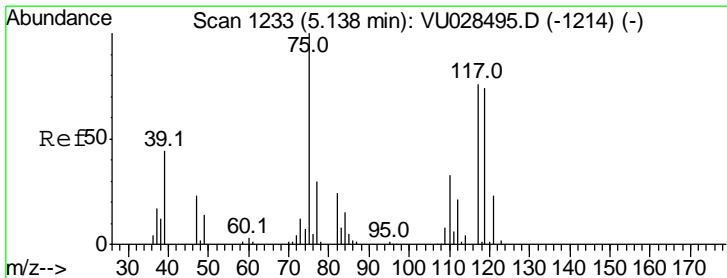
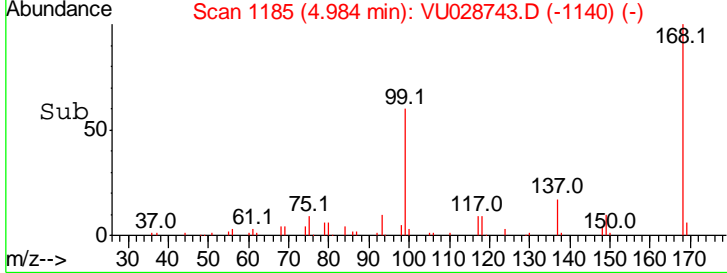
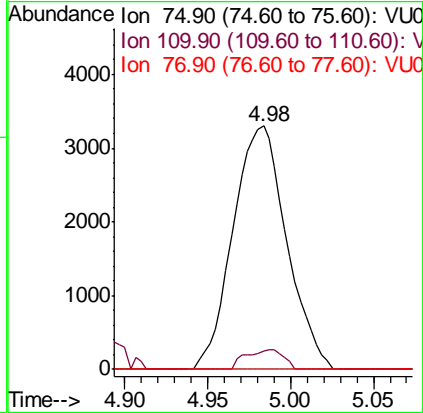
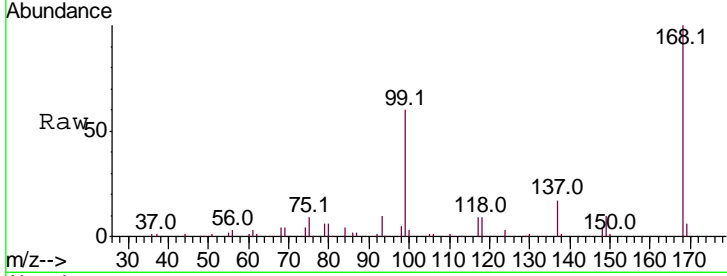




#36
 1,1-Dichloropropene
 Concen: 4.661 ug/l
 RT: 4.98 min Scan# 1185
 Delta R.T. -0.15 min
 Lab File: VU028743.D
 Acq: 18 Dec 2018 01:10

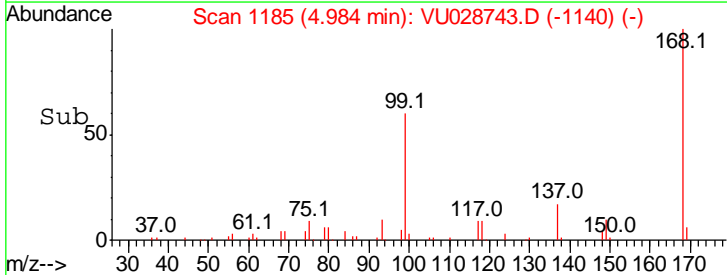
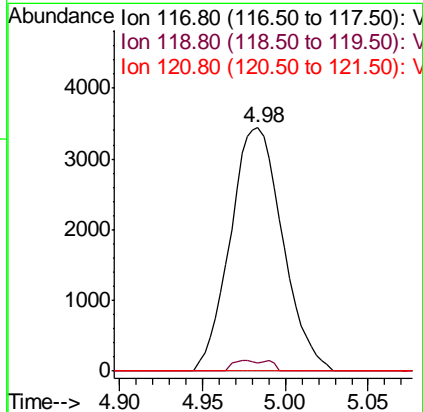
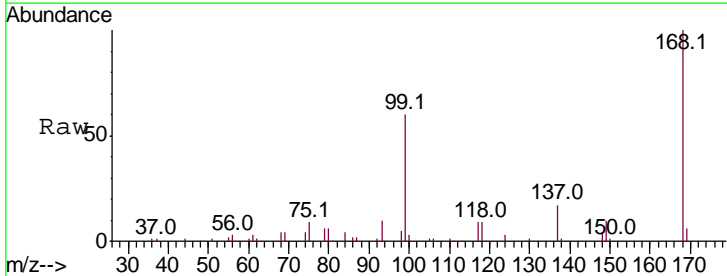
Instrument :
 MSVOA_U
 ClientSampled :

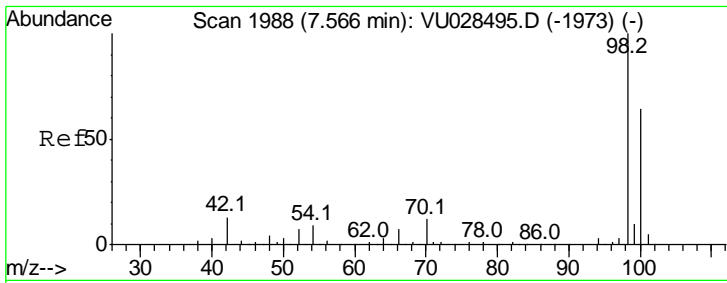
Tgt Ion	Resp	Lower	Upper
75	100		
110	5.8	16.1	48.2#
77	0.0	24.5	36.7#



#38
 Carbon Tetrachloride
 Concen: 5.871 ug/l
 RT: 4.98 min Scan# 1185
 Delta R.T. -0.15 min
 Lab File: VU028743.D
 Acq: 18 Dec 2018 01:10

Tgt Ion	Resp	Lower	Upper
117	100		
119	3.4	77.6	116.4#
121	0.0	24.6	36.8#



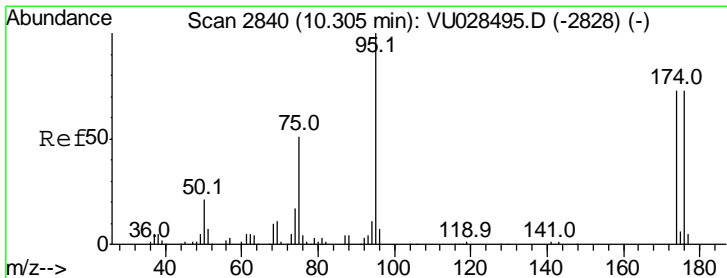
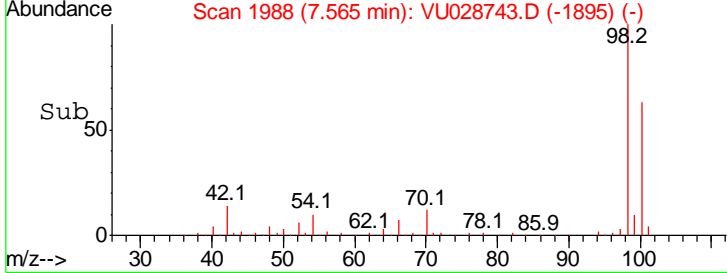
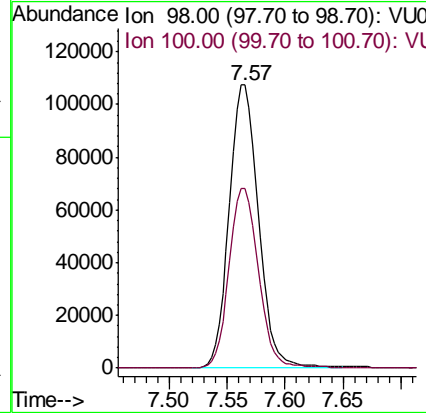
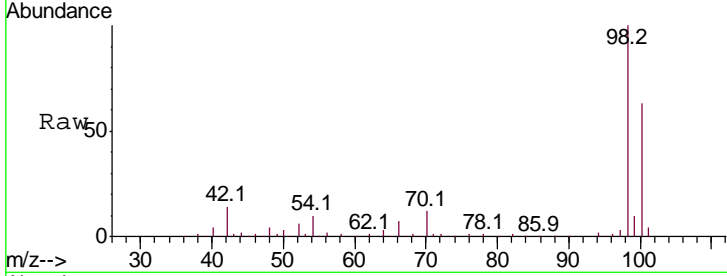


#50
 Toluene-d8
 Concen: 51.990 ug/l
 RT: 7.57 min Scan# 1988
 Delta R.T. -0.00 min
 Lab File: VU028743.D
 Acq: 18 Dec 2018 01:10

Instrument :
 MSVOA_U
 ClientSampled :

Tgt Ion: 98 Resp: 188232

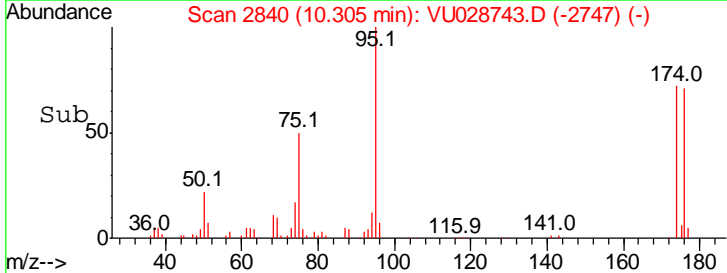
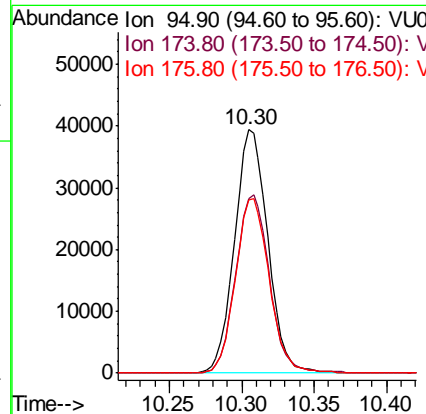
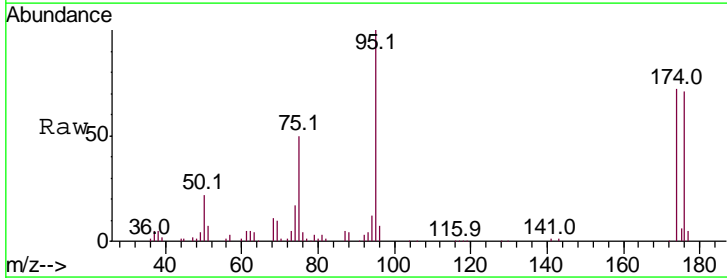
Ion	Ratio	Lower	Upper
98	100		
100	64.1	51.0	76.6

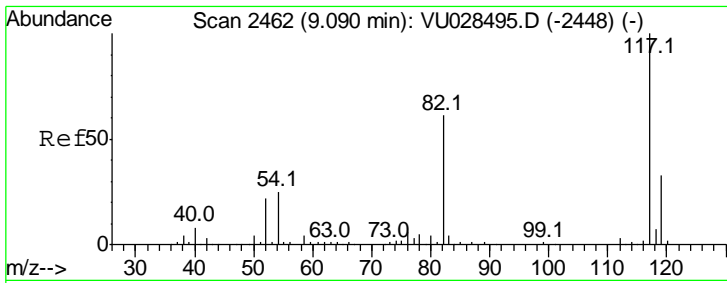


#62
 4-Bromofluorobenzene
 Concen: 46.389 ug/l
 RT: 10.30 min Scan# 2840
 Delta R.T. -0.00 min
 Lab File: VU028743.D
 Acq: 18 Dec 2018 01:10

Tgt Ion: 95 Resp: 62775

Ion	Ratio	Lower	Upper
95	100		
174	74.3	0.0	150.4
176	72.7	0.0	145.2

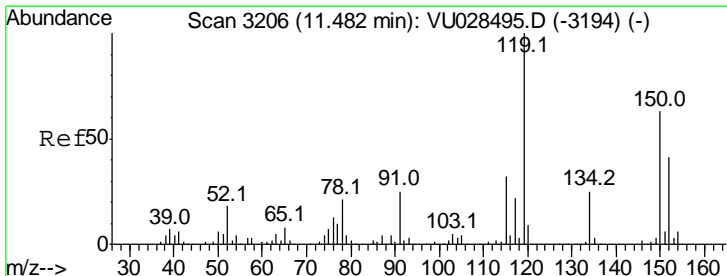
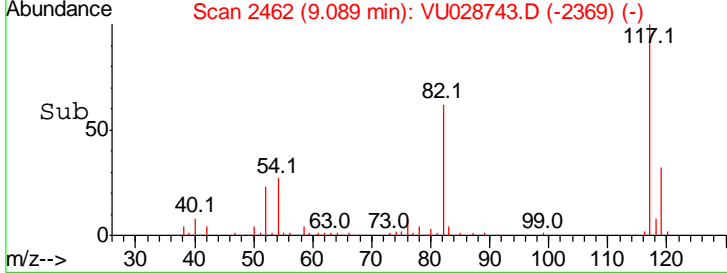
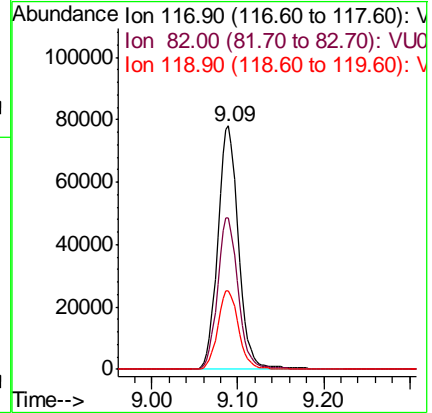
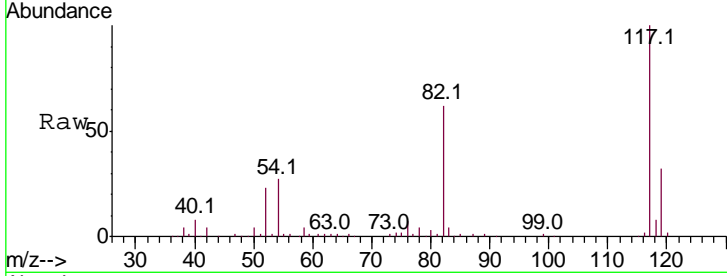




#63
 Chlorobenzene-d5
 Concen: 50.000 ug/l
 RT: 9.09 min Scan# 2462
 Delta R.T. -0.00 min
 Lab File: VU028743.D
 Acq: 18 Dec 2018 01:10

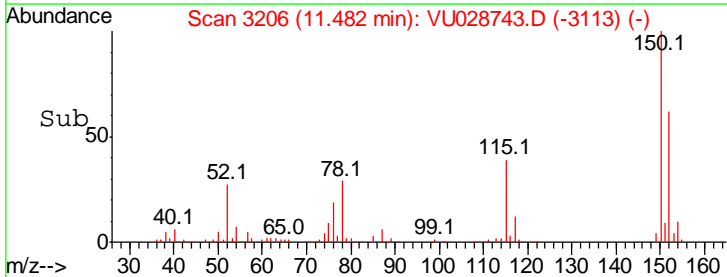
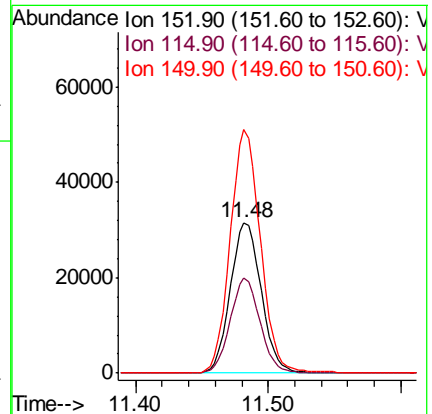
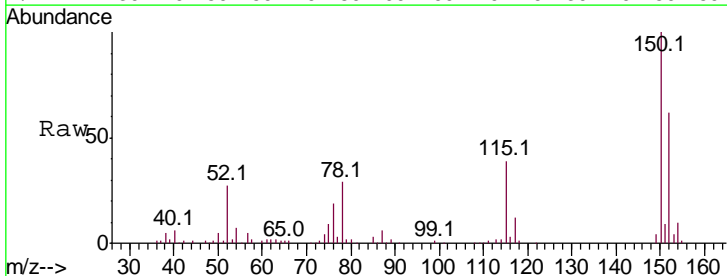
Instrument :
 MSVOA_U
 ClientSampled :

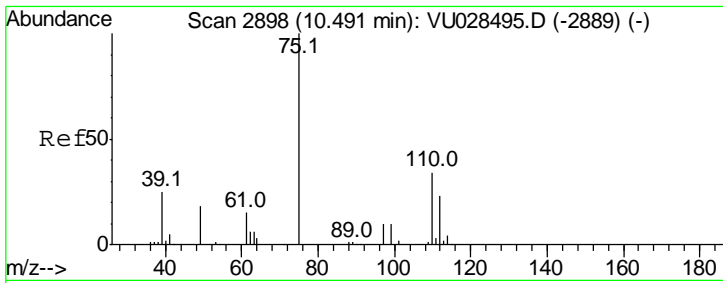
Tgt Ion	Resp	Lower	Upper
117	100		
82	62.2	48.9	73.3
119	32.4	26.2	39.4



#72
 1,4-Dichlorobenzene-d4
 Concen: 50.000 ug/l
 RT: 11.48 min Scan# 3206
 Delta R.T. -0.00 min
 Lab File: VU028743.D
 Acq: 18 Dec 2018 01:10

Tgt Ion	Resp	Lower	Upper
152	100		
115	60.7	42.7	128.1
150	157.8	0.0	346.0

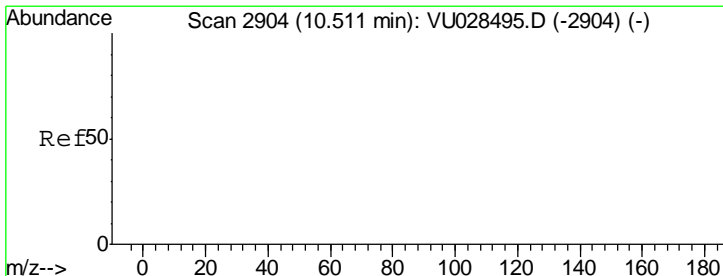
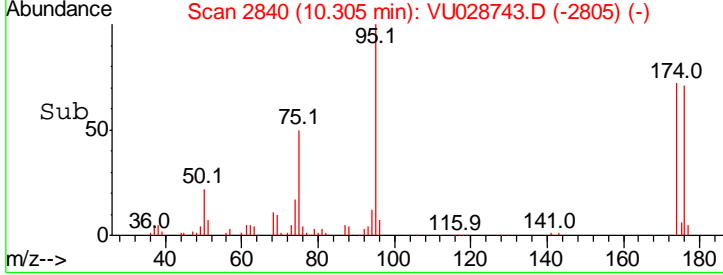
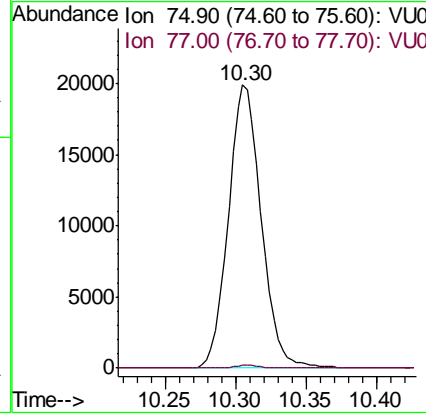
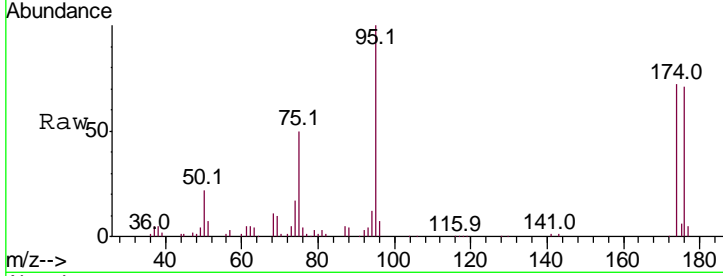




#76
 1,2,3-Trichloropropane
 Concen: 24.699 ug/l
 RT: 10.30 min Scan# 2840
 Delta R.T. -0.19 min
 Lab File: VU028743.D
 Acq: 18 Dec 2018 01:10

Instrument : MSVOA_U
 ClientSampled :

Tgt Ion	Resp	Lower	Upper
75	100		
77	0.7	20.8	62.4#



#81
 trans-1,4-Dichloro-2-butene
 Concen: 60.616 ug/l
 RT: 10.30 min Scan# 2840
 Delta R.T. -0.21 min
 Lab File: VU028743.D
 Acq: 18 Dec 2018 01:10

Tgt Ion	Resp	Lower	Upper
75	100		
53	0.0	0.0	0.0
89	0.0	0.0	0.0

